

## District I

1625 N French Dr, Hobbs, NM 88240

## District II

1301 W. Grand Avenue, Artesia, NM 88210

## District III

1000 Rio Brazos Road, Aztec, NM 87410

## District IV

1220 S. St. Francis Dr., Santa Fe, NM 87505

State of New Mexico  
Energy Minerals and Natural Resources

Form C-101

May 27, 2004

## Oil Conservation Division

1220 South St. Francis Dr.

Santa Fe, NM 87505

Submit to appropriate District Office

☐ AMENDED REPORT

## APPLICATION FOR PERMIT TO DRILL, RE-ENTER, DEEPEN, PLUGBACK, OR ADD A ZONE

<sup>1</sup> Operator Name and Address Hanson Operating Company, Inc. P. O. Box 1515 Roswell, NM 88202-1515		APR - 2 2008 <b>OCD-ARTESIA</b>	<sup>2</sup> OGRID Number 9974
<sup>3</sup> Property Code 303238		<sup>4</sup> Property Name Puffer BDF State Com	<sup>5</sup> API Number 30 - 005-62943
<sup>6</sup> Proposed Pool 1 <i>Acme;</i> San Andres, <i>SE</i> <i>800</i>		<sup>7</sup> Proposed Pool 2	

<sup>7</sup> Surface Location

UL or lot no.	Section	Township	Range	Lot Idn	Feet from the	North/South line	Feet from the	East/West line	County
L	24	8S	27E		1980	South	1250	West	Chaves

<sup>8</sup> Proposed Bottom Hole Location If Different From Surface

UL or lot no.	Section	Township	Range	Lot Idn	Feet from the	North/South line	Feet from the	East/West line	County
---------------	---------	----------	-------	---------	---------------	------------------	---------------	----------------	--------

## Additional Well Information

<sup>11</sup> Work Type Code P	<sup>12</sup> Well Type Code G	<sup>13</sup> Cable/Rotary R	<sup>14</sup> Lease Type Code S	<sup>15</sup> Ground Level Elevation 3959' GR
<sup>16</sup> Multiple N	<sup>17</sup> Proposed Depth 4900'	<sup>18</sup> Formation San Andres	<sup>19</sup> Contractor	<sup>20</sup> Spud Date 4/30/2007
Depth to Groundwater		Distance from nearest fresh water well		Distance from nearest surface water
<sup>21</sup> Pit Liner: Synthetic <input type="checkbox"/> _____ mls thick Clay <input type="checkbox"/> Pit Volume _____ bbls Drilling Method _____ Closed-Loop System <input type="checkbox"/> Fresh Water <input type="checkbox"/> Brine <input type="checkbox"/> Diesel/Oil-based <input type="checkbox"/> Gas/Air <input type="checkbox"/>				

<sup>21</sup> Proposed Casing and Cement Program

Hole Size	Casing Size	Casing weight/foot	Setting Depth	Sacks of Cement	Estimated TOC
12 1/4"	8 5/8"	24#	1610'	950	Surface
7 7/8"	5 1/2"	15.5#	6770'	550	3850'

<sup>22</sup> Describe the proposed program. If this application is to DEEPEN or PLUG BACK, give the data on the present productive zone and proposed new productive zone. Describe the blowout prevention program, if any. Use additional sheets if necessary.

Propose to attempt recompletion and testing prior to plugging as follows:

1. MIRU pulling unit. Install BOP.
2. Set CIBP at 4936' with 35' cement cap to isolate existing perms.
3. Perforate casing at 3650' with 6 holes.
4. Squeeze with 450 sacks of Class "C" cement. WOC 48 hours.
5. Perforate San Andres at 2180' - 2210' with 32 holes.
6. Acidize with 4,000 gallons 20% acid.
7. Swab test and evaluate.
8. Run in hole with production equipment. ND BOP. Place on production.

<sup>23</sup> I hereby certify that the information given above is true and complete to the best of my knowledge and belief. I further certify that the drilling pit will be constructed according to NMOCD guidelines ☒, a general permit ☐, or an (attached) alternative OCD-approved plan ☐.

Signature:

*Carol J. Smith*

Printed name: Carol J. Smith

Title: Production Analyst

E-mail Address: hanson@dfn.com

Date: 4/2/2008

Phone: 505-622-7330

## OIL CONSERVATION DIVISION

Approved by

*Jim W. Green*  
*District II Supervisor*

Title:

Approval Date: 4/3/08

Expiration Date: 4/3/10

Conditions of Approval Attached ☐

## District I

1625 N. French Dr., Hobbs, NM 88240

## District II

1301 W. Grand Avenue, Artesia, NM 88210

## District III

1000 Rio Brazos Rd., Aztec, NM 87410

## District IV

1220 S. St. Francis Dr., Santa Fe, NM 87505

## State of New Mexico

Energy, Minerals &amp; Natural Resources Department

## OIL CONSERVATION DIVISION

1220 South St. Francis Dr.

Santa Fe, NM 87505

Form C-102

Revised October 12, 2005

Submit to Appropriate District Office

State Lease - 4 Copies

Fee Lease - 3 Copies

☐ AMENDED REPORT

## WELL LOCATION AND ACREAGE DEDICATION PLAT

<sup>1</sup> API Number 30-005-62943	<sup>2</sup> Pool Code 800	<sup>3</sup> Pool Name Acme; San Andres, SE
<sup>4</sup> Property Code 303238	<sup>5</sup> Property Name Puffer BDF State Com	
<sup>7</sup> OGRID No. 009974	<sup>8</sup> Operator Name Hanson Operating Company, Inc.	<sup>6</sup> Well Number #2
		<sup>9</sup> Elevation 3959' GR

<sup>10</sup> Surface Location

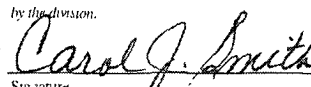
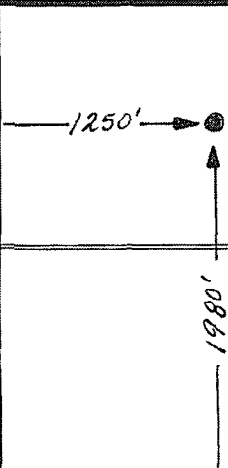
UL or lot no. L	Section 24	Township 8 South	Range 27 East	Lot Idn	Feet from the 1980	North/South line South	Feet from the 1250	East/West line West	County Chaves
--------------------	---------------	---------------------	------------------	---------	-----------------------	---------------------------	-----------------------	------------------------	------------------

<sup>11</sup> Bottom Hole Location If Different From Surface

UL or lot no.	Section	Township	Range	Lot Idn	Feet from the	North/South line	Feet from the	East/West line	County
---------------	---------	----------	-------	---------	---------------	------------------	---------------	----------------	--------

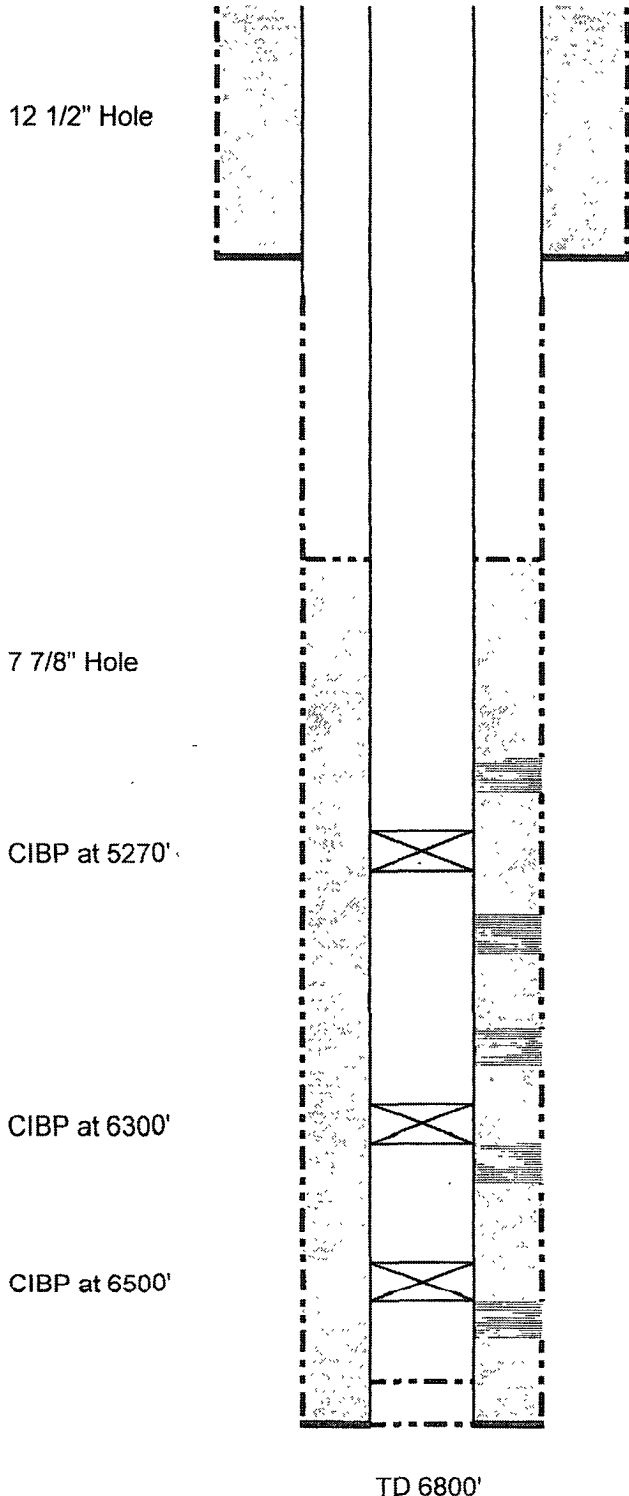
<sup>12</sup> Dedicated Acres 320	<sup>13</sup> Joint or Infill	<sup>14</sup> Consolidation Code	<sup>15</sup> Order No.
--------------------------------------	-------------------------------	----------------------------------	-------------------------

No allowable will be assigned to this completion until all interests have been consolidated or a non-standard unit has been approved by the division.

16				<b>17 OPERATOR CERTIFICATION</b> I hereby certify that the information contained herein is true and complete to the best of my knowledge and belief and that this organization either owns a working interest or unleased mineral interest in the land including the proposed bottom hole location or has a right to drill this well at this location pursuant to a contract with an owner of such a mineral or working interest, or to a voluntary pooling agreement or a compulsory pooling order heretofore entered by the division.  Signature Date 4/2/2008 Carol J. Smith Printed Name
				<b>18 SURVEYOR CERTIFICATION</b> I hereby certify that the well location shown on this plat was plotted from field notes of actual surveys made by me or under my supervision, and that the same is true and correct to the best of my belief. December 21, 1992 Date of Survey Signature and Seal of Professional Surveyor Refer to Original Plat John W. West, 676 Certificate Number

# WELLBORE DIAGRAM

WELL NAME Puffer BDF State Com #2 FIELD Palma Mesa  
 LOCATION 1980' FSL & 1250' FWL, L-Section 24-8S-27E, Chaves County, New Mexico  
 GL 3959' ZERO KB 3971'  
 SPUD DATE RE 3/18/2004 COMPLETION DATE 4/28/2004  
 COMMENTS: API #30-005-62943



## CASING PROGRAM

8 5/8" 24# J-55 ST&C	1610'
5 1/2" 15.5# J-55 ST&C	6770'

8 5/8" at 1610' w/950 sx cement (Circ)

BEFORE

TOC at 3850' by CBL

### Abo

Perfs: 4986'-4994' 16 holes

### Wolfcamp

Perfs: 5604'-5700' 75 holes

5778'-5998' 39 holes

### Cisco

Perfs: 6184'-6236' 39 holes

### Strawn

Perfs: 6338'-6368' 120 holes

6398'-6404' 24 holes

6450'-6454' 16 holes

### Silurian

Perfs: 6516'-6534' 72 holes

5 1/2" at 6770' w/550 sx cement

Not to Scale

4/2/2008

# WELLBORE DIAGRAM

WELL NAME Puffer BDF State Com #2 FIELD Palma Mesa  
 LOCATION 1980' FSL & 1250' FWL, L-Section 24-8S-27E, Chaves County, New Mexico  
 GL 3959' ZERO KB 3971'  
 SPUD DATE RE 3/18/2004 COMPLETION DATE 4/28/2004  
 COMMENTS: API #30-005-62943

12 1/2" Hole

## CASING PROGRAM

8 5/8" 24# J-55 ST&C	1610'
5 1/2" 15.5# J-55 ST&C	6770'

8 5/8" at 1610' w/950 sx cement (Circ)

## AFTER

### San Andres

Perfs: 2180'-2210' 32 holes

TOC at 3850' by CBL

Perfs: 3650' 6 holes, 450 sx cement squeezed

### Abo

Perfs: 4986'-4994' 16 holes

### Wolfcamp

Perfs: 5604'-5700' 75 holes

5778'-5998' 39 holes

### Cisco

Perfs: 6184'-6236' 39 holes

### Strawn

Perfs: 6338'-6368' 120 holes

6398'-6404' 24 holes

6450'-6454' 16 holes

### Silurian

Perfs: 6516'-6534' 72 holes

5 1/2" at 6770' w/550 sx cement

7 7/8" Hole  
CIBP at 4936'

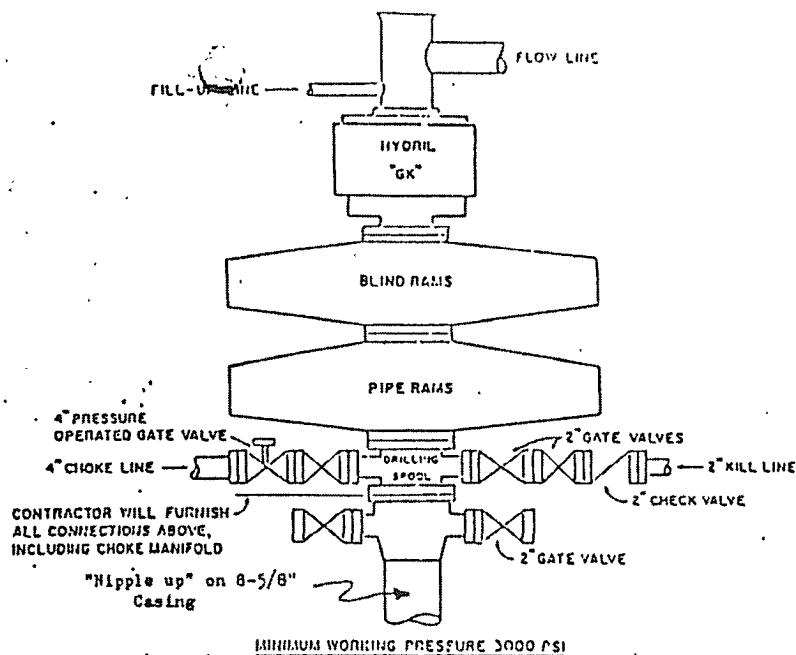
CIBP at 5270'

CIBP at 6300'

CIBP at 6500'

TD 6800'

Not to Scale  
4/2/2008



#### CONTRACTOR TO FURNISH

1. ALL EQUIPMENT ABOVE CASING HEAD HOUSING INCLUDING CHOKER MANIFOLD.
2. INDEPENDENT AUTOMATIC ACCUMULATOR 3000 PSI WP.
3. B.O.P. CONTROLS TO BE LOCATED NEAR DRILLER'S POSITION AND AT SAFE DISTANCE FROM THE WELL.
4. SPACE SET PIPE RAMS TO FIT PIPE IN USE.

#### COMPANY TO FURNISH

1. WELLHEAD EQUIPMENT.
2. WEAR BUSHING, IF REQUIRED.

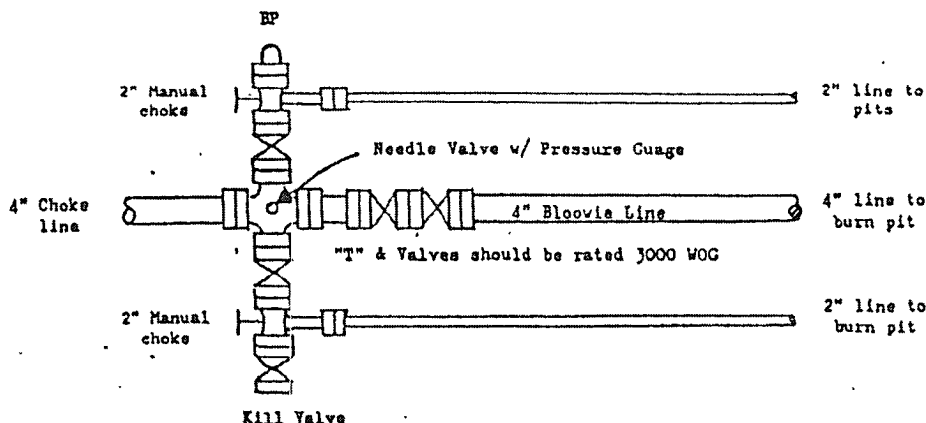
#### GENERAL NOTES

1. ALL VALVES, PIPING, FLANGES ETC. MUST HAVE MINIMUM WORKING PRESSURE EQUAL TO WORKING PRESSURE OF PREVENTERS. VALVES MUST BE OF THE FULL OPENING TYPE.
2. CONTROLS TO BE OF STANDARD DESIGN AND EACH MARKED SHOWING OPEN AND CLOSED POSITION.
3. CHOKER MANIFOLD AS SHOWN IN APP. 18 AND 19 REPLACABLE PARTS AND WRENCHES TO BE CONVENIENTLY LOCATED FOR IMMEDIATE USE.
4. ALL VALVES TO BE EQUIPPED WITH HANDWHEELS.
5. CHOKER LINES MUST BE SUITABLY ANCHORED.
6. DEVIATIONS FROM THIS DRAWING MAY BE MADE ONLY WITH THE PERMISSION OF THE COMPANY.

### MINIMUM BLOWOUT PREVENTER REQUIREMENTS

#### NORMAL PRESSURE SERVICE

#### CHOKER MANIFOLD SETUP



The above Manifold Hookup Design will meet minimum requirement by the Operator. Drilling Contractor to supply choke line and choke manifold. Operator to supply downstream lines from manifold assembly to pits.