

UNITED STATES
DEPARTMENT OF THE INTERIOR
BUREAU OF LAND MANAGEMENTFORM APPROVED
OMB NO. 1004-0137
Expires March 31, 2007

SUNDRY NOTICES AND REPORTS ON WELLS

Do not use this form for proposals to drill or to re-enter an abandoned well. Use Form 3160-3 (APD) for such proposals.

OCD-ARTESIA

\$

SUBMIT IN TRIPLICATE - Other instructions on reverse side

1. Type of Well
☒ Oil Well ☐ Gas Well ☐ Other

APR 29 2008

2. Name of Operator

OCD-ARTESIA

BP America Production Company

3a. Address

P.O. Box 1089 Eunice NM 88231

3b. Phone No. (include area code)

575-394-1600

4. Location of Well (Footage, Sec., T., R., M., or Survey Description)

UL P, 660 FSL & 660 FEL

SECTION 9, T18S, R27E

5. Lease Serial No.

NMLC065478B

6. If Indian, Allottee or Tribe Name

7. If Unit or CA/Agreement, Name and/or No.

8. Well Name and No.

Empire Abo Unit 8

1P

9. API Well No.

30-015-00848

10. Field and Pool, or Exploratory Area

Empire Abo

11. County or Parish, State

Eddy

NM

12. CHECK APPROPRIATE BOX(ES) TO INDICATE NATURE OF NOTICE, REPORT, OR OTHER DATA

TYPE OF SUBMISSION

☒ Notice of Intent☐ Subsequent Report☐ Final Abandonment Notice

TYPE OF ACTION

☐ Acidize☐ Alter Casing☐ Casing Repair☐ Change Plans☐ Convert to Injection☐ Deepen☐ Fracture Treat☐ New Construction☒ Plug and Abandon☐ Plug Back☐ Production (Start/Resume)☐ Reclamation☐ Recomplete☐ Temporarily Abandon☐ Well Disposal☐ Water Shut-Off☐ Well Integrity☐ Other

ACCEPTED FOR RECORD

APR 30 2008

Gerry Guye, Deputy Field Inspector

NMCD District II ARTESIA

13. Describe Proposed or Completed Operation (clearly state all pertinent details, including estimated starting date of any proposed work and approval thereof. If the proposal is to deepen directionally or recompleat horizontally, give subsurface locations and measured and true vertical depths of all pertinent markers and zones. Attach the Bond under which the work will be performed or provide the Bond No. on file with BLM/BIA. Required subsequent reports shall be filed within 30 days following completion of the involved operations. If the operation results in a multiple completion or recompleat in a new interval, a Form 3160-4 shall be filed once testing has been completed. Final Abandonment Notices shall be filed only after all requirements, including reclamation, have been completed, and the operator has determined that the final site is ready for final inspection.)

EAU P-8 has been determined to be watered out in the current zone of production and uneconomic to return to production. There is no further potential Abo pay to perforate. BP requests an extension of 90 days to receive partner approval from the original well-bore owners to P&A this well.

Proposed P&A procedures:

STEP 10 & 11 minimum 25 SX

1. Notify BLM/NMCD 24 hours before plugging operations begin.
2. MIRU PU. Check casing and surface pipe for pressure. Bleed into containment.
3. POOH with rods and pump and lay down.
4. ND wellhead and install BOP. Test to 500 psi.
5. Unset TAC @ 5708' and POOH w/ tubing laying down all joints.
6. TIH with work string and set CIBP @ 5690' (50 ft above top perforation)
7. Load hole with produced water and test to 500 psi.
8. Spot 25 sax of cement on top of CIBP set at 5690'. (cement from 5690-5400')

SEE ATTACHED FOR
CONDITIONS OF APPROVAL

Continued on Page 2.

14. I hereby certify that the foregoing is true and correct
Name (Printed/Typed)

Barry C. Price

Title

Area Operations Team Lead

Date 4/22/08

APPROVED

THIS SPACE FOR FEDERAL OR STATE OFFICE USE

Approved by

Title

APR 25 2008

Conditions of approval, if any, are attached. Approval of this notice does not warrant or certify that the applicant holds legal or equitable title to those rights in the subject lease which would entitle the applicant to conduct operations thereon.

Office

JAMES A. AMOS

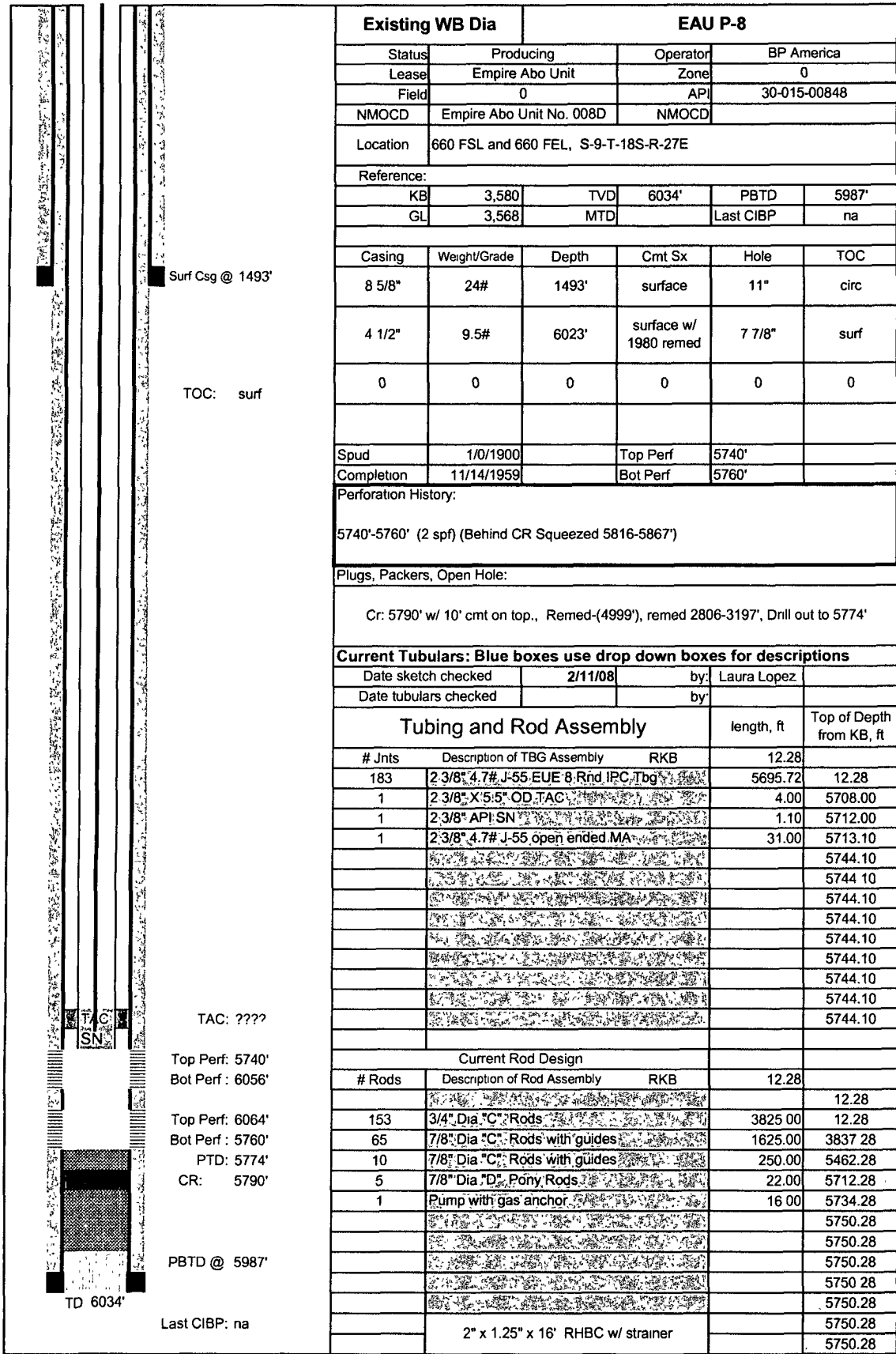
SUPERVISOR EPS

Title 18 U.S.C. Section 1001, and Title 43 U.S.C. Section 1212, makes it a crime for any person knowingly and willfully to make to any department or agency of the United States any false, fictitious or fraudulent statements or representations as to any matter within its jurisdiction.

Form 3160-5
Empire Abo Unit P-8
30-015-00848
Continued from Page 1

9. PU to 5350' (about 50' above top of cement) and circulate hole w/ mud laden fluid.
10. POH to 3268' (Glorieta top = 3168'). Spot 20 sack balanced plug from 3268'- 3978'.
PU. WOC 2 hours. Tag plug and re-spot if necessary.
11. POH to 1593' (8 5/8" surface casing shoe = 1493'). Spot 20 sack balanced plug from 1593'-1303'.
12. POH to 150' (Yates top approx @ 50'). Spot approx 15 sx cement from 150'-0'.
(Provides surface plug). POH and WOC to set.
13. If necessary POH w/ tbg and fill well bore w/ cement to 3' below GL.
14. RDPU and clean location.
15. Dig out wellhead and cut off casing heads to 3' below ground level.
16. Install regulation dry-hole marker.

EAU P-8 Current WB Diagram



EAU P-8 Planned Plugging Operations

| | | | | | | | | | |
|--------|---|-----------------------------|-------------------------------|-------|---------------------------------|----------------|--------------------|--|--|
| | Surface plug & Yates @ 50' Cement from 150' to 0' ~ 11 sx | Existing WB Dia | | | | EAU P-8 | | | |
| | Status: Producing | | Operator: BP America | | Lease: Empire Abo Unit | | Zone: 0 | | |
| | Field: 0 | | API: 30-015-00848 | | NMOCD: Empire Abo Unit No. 008D | | NMOCD: | | |
| | Location: 660 FSL and 660 FEL, S-9-T-18S-R-27E | | Reference: | | KB: 3,580 | | TVD: 6034' | | |
| | GL: 3,568 | | MTD: | | PBTD: 5987' | | Last CIBP: na | | |
| | Casing: 8 5/8" | | Weight/Grade: 24# | | Depth: 1493' | | Cmt Sx: ? | | |
| | Hole: 11" | | TOC: circ | | Casing: 4 1/2" | | Weight/Grade: 9.5# | | |
| | Depth: 6023' | | Cmt Sx: surface w/ 1980 remed | | Hole: 7 7/8" | | TOC: surf | | |
| | 0 | | 0 | | 0 | | 0 | | |
| | Spud: 1/0/1900 | | Top Perf: 5740' | | Completion: 11/14/1959 | | Bot Perf: 5760' | | |
| | Perforation History: 5740'-5760' (2 spf) (Behind CR Squeezed 5816-5867') | | | | | | | | |
| | Plugs, Packers, Open Hole: Cr. 5790' w/ 10' cmt on top., Remed-(4999'), remed 2806-3197', Drill out to 5774' | | | | | | | | |
| | Current Tubulars: Blue boxes use drop down boxes for descriptions | | | | | | | | |
| | Date sketch checked: 4/20/08 | | by: Laura Lopez | | Date tubulars checked: | | by: | | |
| | Tubing and Rod Assembly | | | | | | length, ft | | |
| # Jnts | | Description of TBG Assembly | | RKB | | 12.28 | | | |
| 12.28 | | 12.28 | | 12.28 | | 12.28 | | | |
| 12.28 | | 12.28 | | 12.28 | | 12.28 | | | |
| 12.28 | | 12.28 | | 12.28 | | 12.28 | | | |
| 12.28 | | 12.28 | | 12.28 | | 12.28 | | | |
| 12.28 | | 12.28 | | 12.28 | | 12.28 | | | |
| 12.28 | | 12.28 | | 12.28 | | 12.28 | | | |
| 12.28 | | 12.28 | | 12.28 | | 12.28 | | | |
| 12.28 | | 12.28 | | 12.28 | | 12.28 | | | |
| 12.28 | | 12.28 | | 12.28 | | 12.28 | | | |
| 12.28 | | 12.28 | | 12.28 | | 12.28 | | | |
| 12.28 | | 12.28 | | 12.28 | | 12.28 | | | |
| 12.28 | | 12.28 | | 12.28 | | 12.28 | | | |
| 12.28 | | 12.28 | | 12.28 | | 12.28 | | | |
| 12.28 | | 12.28 | | 12.28 | | 12.28 | | | |
| 12.28 | | 12.28 | | 12.28 | | 12.28 | | | |
| 12.28 | | 12.28 | | 12.28 | | 12.28 | | | |
| 12.28 | | 12.28 | | 12.28 | | 12.28 | | | |
| 12.28 | | 12.28 | | 12.28 | | 12.28 | | | |
| 12.28 | | 12.28 | | 12.28 | | 12.28 | | | |
| 12.28 | | 12.28 | | 12.28 | | 12.28 | | | |
| 12.28 | | 12.28 | | 12.28 | | 12.28 | | | |
| 12.28 | | 12.28 | | 12.28 | | 12.28 | | | |
| 12.28 | | 12.28 | | 12.28 | | 12.28 | | | |
| 12.28 | | 12.28 | | 12.28 | | 12.28 | | | |
| 12.28 | | 12.28 | | 12.28 | | 12.28 | | | |
| 12.28 | | 12.28 | | 12.28 | | 12.28 | | | |
| 12.28 | | 12.28 | | 12.28 | | 12.28 | | | |
| 12.28 | | 12.28 | | 12.28 | | 12.28 | | | |
| 12.28 | | 12.28 | | 12.28 | | 12.28 | | | |
| 12.28 | | 12.28 | | 12.28 | | 12.28 | | | |
| 12.28 | | 12.28 | | 12.28 | | 12.28 | | | |
| 12.28 | | 12.28 | | 12.28 | | 12.28 | | | |
| 12.28 | | 12.28 | | 12.28 | | 12.28 | | | |
| 12.28 | | 12.28 | | 12.28 | | 12.28 | | | |
| 12.28 | | 12.28 | | 12.28 | | 12.28 | | | |
| 12.28 | | 12.28 | | 12.28 | | 12.28 | | | |
| 12.28 | | 12.28 | | 12.28 | | 12.28 | | | |
| 12.28 | | 12.28 | | 12.28 | | 12.28 | | | |
| 12.28 | | 12.28 | | 12.28 | | 12.28 | | | |
| 12.28 | | 12.28 | | 12.28 | | 12.28 | | | |
| 12.28 | | 12.28 | | 12.28 | | 12.28 | | | |
| 12.28 | | 12.28 | | 12.28 | | 12.28 | | | |
| 12.28 | | 12.28 | | 12.28 | | 12.28 | | | |
| 12.28 | | 12.28 | | 12.28 | | 12.28 | | | |
| 12.28 | | 12.28 | | 12.28 | | 12.28 | | | |
| 12.28 | | 12.28 | | 12.28 | | 12.28 | | | |
| 12.28 | | 12.28 | | 12.28 | | 12.28 | | | |
| 12.28 | | 12.28 | | 12.28 | | 12.28 | | | |
| 12.28 | | 12.28 | | 12.28 | | 12.28 | | | |
| 12.28 | | 12.28 | | 12.28 | | 12.28 | | | |
| 12.28 | | 12.28 | | 12.28 | | 12.28 | | | |
| 12.28 | | 12.28 | | 12.28 | | 12.28 | | | |
| 12.28 | | 12.28 | | 12.28 | | 12.28 | | | |
| 12.28 | | 12.28 | | 12.28 | | 12.28 | | | |
| 12.28 | | 12.28 | | 12.28 | | 12.28 | | | |
| 12.28 | | 12.28 | | 12.28 | | 12.28 | | | |
| 12.28 | | 12.28 | | 12.28 | | 12.28 | | | |
| 12.28 | | 12.28 | | 12.28 | | 12.28 | | | |
| 12.28 | | 12.28 | | 12.28 | | 12.28 | | | |
| 12.28 | | 12.28 | | 12.28 | | 12.28 | | | |
| 12.28 | | 12.28 | | 12.28 | | 12.28 | | | |
| 12.28 | | 12.28 | | 12.28 | | 12.28 | | | |
| 12.28 | | 12.28 | | 12.28 | | 12.28 | | | |
| 12.28 | | 12.28 | | 12.28 | | 12.28 | | | |
| 12.28 | | 12.28 | | 12.28 | | 12.28 | | | |
| 12.28 | | 12.28 | | 12.28 | | 12.28 | | | |
| 12.28 | | 12.28 | | 12.28 | | 12.28 | | | |
| 12.28 | | 12.28 | | 12.28 | | 12.28 | | | |
| 12.28 | | 12.28 | | 12.28 | | 12.28 | | | |
| 12.28 | | 12.28 | | 12.28 | | 12.28 | | | |
| 12.28 | | 12.28 | | 12.28 | | 12.28 | | | |
| 12.28 | | 12.28 | | 12.28 | | 12.28 | | | |
| 12.28 | | 12.28 | | 12.28 | | 12.28 | | | |
| 12.28 | | 12.28 | | 12.28 | | 12.28 | | | |
| 12.28 | | 12.28 | | 12.28 | | 12.28 | | | |
| 12.28 | | 12.28 | | 12.28 | | 12.28 | | | |
| 12.28 | | 12.28 | | 12.28 | | 12.28 | | | |
| 12.28 | | 12.28 | | 12.28 | | 12.28 | | | |
| 12.28 | | 12.28 | | 12.28 | | 12.28 | | | |
| 12.28 | | 12.28 | | 12.28 | | 12.28 | | | |
| 12.28 | | 12.28 | | 12.28 | | 12.28 | | | |
| 12.28 | | 12.28 | | 12.28 | | 12.28 | | | |
| 12.28 | | 12.28 | | 12.28 | | 12.28 | | | |
| 12.28 | | 12.28 | | 12.28 | | 12.28 | | | |
| 12.28 | | 12.28 | | 12.28 | | 12.28 | | | |
| 12.28 | | 12.28 | | 12.28 | | 12.28 | | | |
| 12.28 | | 12.28 | | 12.28 | | 12.28 | | | |
| 12.28 | | 12.28 | | 12.28 | | 12.28 | | | |
| 12.28 | | 12.28 | | 12.28 | | 12.28 | | | |
| 12.28 | | 12.28 | | 12.28 | | | | | |