

State of New Mexico  
Energy, Minerals & Natural Resources



Form C-101  
May 27, 2004

District I  
1625 N. French Dr., Hobbs, NM 88240  
District II  
1301 W Grand Avenue, Artesia, NM 88210  
District III  
1000 Rio Brazos Rd., Aztec, NM 87410  
District IV  
1220 S. St. Francis Dr., Santa Fe, NM 87505

Oil Conservation Division  
1220 S. St. Francis Dr.  
Santa Fe, NM 87505

MAY 29 2008

Submit to appropriate District Office

OCD-ARTESIA

☐ AMENDED REPORT

**APPLICATION FOR PERMIT TO DRILL, RE-ENTER, DEEPEN, PLUGBACK, OR ADD A ZONE**

<sup>1</sup> Operator Name and Address Nearburg Producing Company 3300 N A St., Bldg 2, Ste 120, Midland, TX 79705		<sup>2</sup> OGRID Number 015742	
<sup>4</sup> Property Code		<sup>3</sup> API Number 30- 15-30817	
<sup>5</sup> Property Name South Boyd 27		<sup>6</sup> Well No. 11	
<sup>9</sup> Proposed Pool 1 Undesignated: Glorieta/ Yeso		<sup>10</sup> Proposed Pool 2	

**<sup>7</sup> Surface Location**

UL or lot no	Section	Township	Range	Lot. Idn	Feet from the	North/South Line	Feet from the	East/West line	County
F	27	19S	25E		1830	North	1830	West	Eddy

**<sup>8</sup> Proposed Bottom Hole Location If Different From Surface**

UL or lot no.	Section	Township	Range	Lot. Idn	Feet from the	North/South Line	Feet from the	East/West line	County

**Additional Well Location**

<sup>11</sup> Work Type Code Plugback	<sup>12</sup> Well Type Code 0	<sup>13</sup> Cable/Rotary	<sup>14</sup> Lease Type Code State	<sup>15</sup> Ground Level Elevation 3460
<sup>16</sup> Multiple N	<sup>17</sup> Proposed Depth 8100'	<sup>18</sup> Formation Glorieta/ Yeso	<sup>19</sup> Contractor Mesa	<sup>20</sup> Spud Date 6/1/08
Depth to ground water		Distance from nearest fresh water well		Distance from nearest surface water
Pit: Liner: Synthetic <input type="checkbox"/> _____ mils thick Clay <input type="checkbox"/> Pit Volume _____ bbls Drilling Method: Closed-Loop System <input type="checkbox"/> Fresh Water <input type="checkbox"/> Brine <input type="checkbox"/> Diesel/Oil-based <input type="checkbox"/> Gas/Air <input type="checkbox"/>				

**<sup>21</sup> Proposed Casing and Cement Program**

Hole Size	Casing Size	Casing weight/foot	Setting Depth	Sacks of Cement	Estimated TOC
14-3/4	9-5/8	36	1106	1500	Surface
8-3/4	7	23 & 29	8100	225	7250
All csg is existing					

<sup>22</sup> Describe the proposed program. If this application is to DEEPEN or PLUG BACK, give the data on the present productive zone and proposed new productive zone. Describe the blowout prevention program, if any. Use additional sheets if necessary.

Propose to plugback the well to evaluate the Glorieta/ Yeso formation. Perf, test and stimulate as necessary to establish production.

See attached procedure.

NOTE: NEW PIT RULE

<sup>23</sup> I hereby certify that the information given above is true and complete to the best of my knowledge and belief. I further certify that the drilling pit will be constructed according to NMOC guidelines <input checked="" type="checkbox"/> a general permit <input type="checkbox"/> , or an (attached) alternative OCD-approved plan <input type="checkbox"/> .		OIL CONSERVATION DIVISION	
Signature: <i>Sarah Jordan</i>		Approved by: <i>Jim W. Green</i>	
Printed name: Sarah Jordan		Title: <i>District II Supervisor</i>	
Title: Production Analyst		Approval Date: <i>5/29/08</i> Expiration Date: <i>5/29/10</i>	
E-mail Address: sjordan@nearburg			
Date: <i>5-21-08</i>	Phone: 432/686-8235	Conditions of Approval: Attached <input type="checkbox"/>	

District I  
1625 N. French Dr., Hobbs, NM 88240  
District II  
1301 W. Grand Avenue, Artesia, NM 88210  
District III  
1000 Rio Brazos Rd., Aztec, NM 87410  
District IV  
1220 S. St. Francis Dr., Santa Fe, NM 87505

State of New Mexico  
Energy, Minerals & Natural Resources Department  
OIL CONSERVATION DIVISION  
1220 South St. Francis Dr.  
Santa Fe, NM 87505

Form C-102  
Revised October 12, 2005  
Submit to Appropriate District Office  
State Lease - 4 Copies  
Fee Lease - 3 Copies

☐ AMENDED REPORT

WELL LOCATION AND ACREAGE DEDICATION PLAT

<sup>1</sup> API Number	<sup>2</sup> Pool Code 97482	<sup>3</sup> Pool Name Undesignated; Glorieta-150
<sup>4</sup> Property Code	<sup>5</sup> Property Name South Bay 27	<sup>6</sup> Well Number 11
<sup>7</sup> OGRID No. 015742	<sup>8</sup> Operator Name Nearburg Producing Company	<sup>9</sup> Elevation 3460

<sup>10</sup> Surface Location									
UL or lot no. F	Section 27	Township 19S	Range 25E	Lot Idn	Feet from the 1830	North/South line N	Feet from the 1830	East/West line W	County Cady

<sup>11</sup> Bottom Hole Location If Different From Surface									
UL or lot no.	Section	Township	Range	Lot Idn	Feet from the	North/South line	Feet from the	East/West line	County

<sup>12</sup> Dedicated Acres 40	<sup>13</sup> Joint or Infill	<sup>14</sup> Consolidation Code	<sup>15</sup> Order No.
-------------------------------------	-------------------------------	----------------------------------	-------------------------

No allowable will be assigned to this completion until all interests have been consolidated or a non-standard unit has been approved by the division.

<sup>16</sup>	<sup>17</sup> <b>OPERATOR CERTIFICATION</b> I hereby certify that the information contained herein is true and complete to the best of my knowledge and belief, and that this organization either owns a working interest or unleased mineral interest in the land including the proposed bottom hole location or has a right to drill this well at this location pursuant to a contract with an owner of such a mineral or working interest, or to a voluntary pooling agreement or a compulsory pooling order heretofore entered by the division. Signature: <u>Jordan</u> Date: <u>5.22.08</u> Printed Name: <u>Sarah Jordan</u>
	<sup>18</sup> <b>SURVEYOR CERTIFICATION</b> I hereby certify that the well location shown on this plat was plotted from field notes of actual surveys made by me or under my supervision, and that the same is true and correct to the best of my belief. Date of Survey Signature and Seal of Professional Surveyor.
	Certificate Number

## DISTRICT I

P.O. Box 1980, Hobbs, NM 88241-1980

## State of New Mexico

Energy, Minerals and Natural Resources Department

Form C-102

Revised February 10, 1994

Submit to Appropriate District Office

State Lease - 4 Copies

Fee Lease - 3 Copies

## DISTRICT II

P.O. Drawer DD, Artesia, NM 88211-0719

## DISTRICT III

1000 Rio Brazos Rd., Aztec, NM 87410

## DISTRICT IV

P.O. BOX 2088, SANTA FE, N.M. 87504-2088

## OIL CONSERVATION DIVISION

P.O. Box 2088

Santa Fe, New Mexico 87504-2088

☐ AMENDED REPORT

## WELL LOCATION AND ACREAGE DEDICATION PLAT

API Number	Pool Code	Pool Name <i>Undesignated, Gloriette-Vaso</i>
Property Code	Property Name SOUTH BOYD 27	Well Number 11
OGRID No. 015742	Operator Name NEARBURG PRODUCING COMPANY	Elevation 3460

## Surface Location

UL or lot No.	Section	Township	Range	Lot Idn	Feet from the	North/South line	Feet from the	East/West line	County
F	27	19 S	25 E		1830	NORTH	1830	WEST	EDDY

## Bottom Hole Location If Different From Surface

UL or lot No.	Section	Township	Range	Lot Idn	Feet from the	North/South line	Feet from the	East/West line	County

Dedicated Acres 160	Joint or Infill N	Consolidation Code	Order No.
------------------------	----------------------	--------------------	-----------

NO ALLOWABLE WILL BE ASSIGNED TO THIS COMPLETION UNTIL ALL INTERESTS HAVE BEEN CONSOLIDATED  
OR A NON-STANDARD UNIT HAS BEEN APPROVED BY THE DIVISION

	<b>OPERATOR CERTIFICATION</b>  I hereby certify the the information contained herein is true and complete to the best of my knowledge and belief.  <i>Blaik W. [Signature]</i> Signature <b>Blaik Wisenbaker</b> Printed Name <b>Sr. Petroleum Engineer</b> Title <b>11-1-99</b> Date
	<b>SURVEYOR CERTIFICATION</b>  I hereby certify that the well location shown on this plat was plotted from field notes of actual surveys made by me or under my supervision, and that the same is true and correct to the best of my belief.  <b>OCTOBER 19, 1999</b> Date Surveyed <i>[Signature]</i> Signature <b>RONALD EIDSON</b> Printed Name <b>PROFESSIONAL SURVEYOR</b> Title <b>12641</b> License No. <b>11-0826</b> Date
	<b>NEW MEXICO</b> <b>12641</b> <b>11-0826</b> <b>12185</b>
	<b>RONALD EIDSON</b> <b>12641</b> <b>12185</b>

**RECOMMENDED PROCEDURE:**

Both the Upper Penn and Glorieta/Yesso are BAD GAS zones (H2S at hazardous levels)

1) RU JSI to run CBL from 2725' to surface. 1st pass from 2725 to 2225' w/no pressure then a pass from 2725' to surface with 1000# if 1st pass looks like cmt is to surface. If TOC is not at surface determine best method forward. If cmt is to surface test csg to 3500#.

2) RU JSI to perf as follows:

2646'	2634'	2566'	2555'	2480'	2474'	2463'
2440'	2406'	2400'	2388'	2378'	2359'	2353'
2341'	2321'	2316'	2298'	2293'	2289'	

with 1 spf premium charges correlated to Schlumberger Platform Express Three Detector Litho-Density Compensated Neutron/GR" log dated 16-DEC-1999 run One. RD JSI.

3) RIH w/2-3/8" J-55 tbg to 2200' with 7" trtg pkr. Pickle tbg w/300g Xylene and 1000g 15% NEFE pump down tbg and out BS to clean both tbg & 7" casing. Set trtg pkr. Hold 500# on BS while breaking down the perforations.

4) RU BJ to Break down perfs with 2000g 15% NEFE HCL in stages as follows:

- a) Pump 500g 15% NEFE HCL
- b) Drop 5 7/8" 1.3 balls
- c) Pump 250g 15% NEFE HCL
- d) Drop 5 7/8" 1.3 balls
- e) Pump 250g 15% NEFE HCL
- f) Drop 5 7/8" 1.3 balls
- g) Pump 250g 15% NEFE HCL
- h) Drop 5 7/8" 1.3 balls
- i) Pump 250g 15% NEFE HCL
- j) Drop 5 7/8" 1.3 balls
- k) Pump 250g 15% NEFE HCL
- l) Drop 5 7/8" 1.3 balls
- m) Pump 250g 15% NEFE HCL
- n) Displace to btm perf w/2% KCL

Let acid spend 1-1.5 hrs. Flow back acid load. Rlse pkr and RIH to make sure balls are cleared off perfs. POH w/tbg & pkr.

3) RU BJ to Frac well as follows at 60 bpm down casing:

Stage	Fluid	Vol(g)	ppg	Prop	Stage#	Cum#'s
1	Gelled 3% Acid	20,000	Pre-PAD			
2	Gelled 3% Acid	5,000	.5	20/40 SLC	2,500	2,500
3	Gelled 3% Acid	20,000	.PAD			
4	Gelled 3% Acid	10,000	.1	LiteProp 14/30	1,000	3,500
5	Gelled 3% Acid	20,000	.2	LiteProp 14/30	4,000	7,500
6	Gelled 3% Acid	20,000	.3	LiteProp 14/30	6,000	13,500
7	Gelled 3% Acid	10,000	.4	LiteProp 14/30	4,000	17,500
8	Gelled 3% Acid	10,000	.5	SLC 20/40	5,000	22,500
9	Gelled 3% Acid	10,000	.75	SLC 20/40	7,500	30,000
10	Gelled 3% Acid	10,000	1	SLC 20/40	10,000	40,000
11	Gelled 3% Acid	10,000	1.5	SLC 20/40	15,000	50,000
12	Fresh Water	3,690	FLUSH			

Get ISIP, 5 min, 10 min & 15 min SIP's. RD BJ.

5) SI Overnight to let resin coated sand stabalize.

6) Flowback well till it dies then run 2-3/8" tbg and 8 1-3/8"K bars + 3/4" KD rods and ponies to surface. Use new C80-119-54 weatherford units.

# CURRENT WELLBORE DIAGRAM

Page 5 of 9

LEASE: South Boyd 27	WELL: 11	FIELD: Dagger Draw North	API: 30015308170000
LOC: 1,830' FNL and 1,830' FWL	SEC: 27	BLK:	PARS NO:
SVY: T19S, R25E	GL: 3,460'	CTY/ST: Eddy County, NM	SPUD: 11/26/1999
CURRENT STATUS: Inactive (SI)	KB: 3,476'	DF:	TD DATE: 12/16/1999
			COMP. DATE: 1/7/2000

FRESH WATER  
DEPTH:

HOLE SIZE: 14 3/4"  
SURF CSG & SIZE: 9 5/8" 36# J55  
SET @: 1,106'  
SXS CMT: 1,500 sx  
CIRC: no  
TOC AT: 75'  
TOC BY: Tagged w/ 1" thg

COMMENTS:

## \*\*\*\*\*GEOLOGY\*\*\*\*\*

TOPS OF ALL ZONES  
PRODUCTIVE OF HYDRO-  
CARBONS:  
San Andres: 740'  
Glorieta: 2345'  
Bone Springs: 3780'  
Wolfcamp: 6138'  
Canyon: 7685'

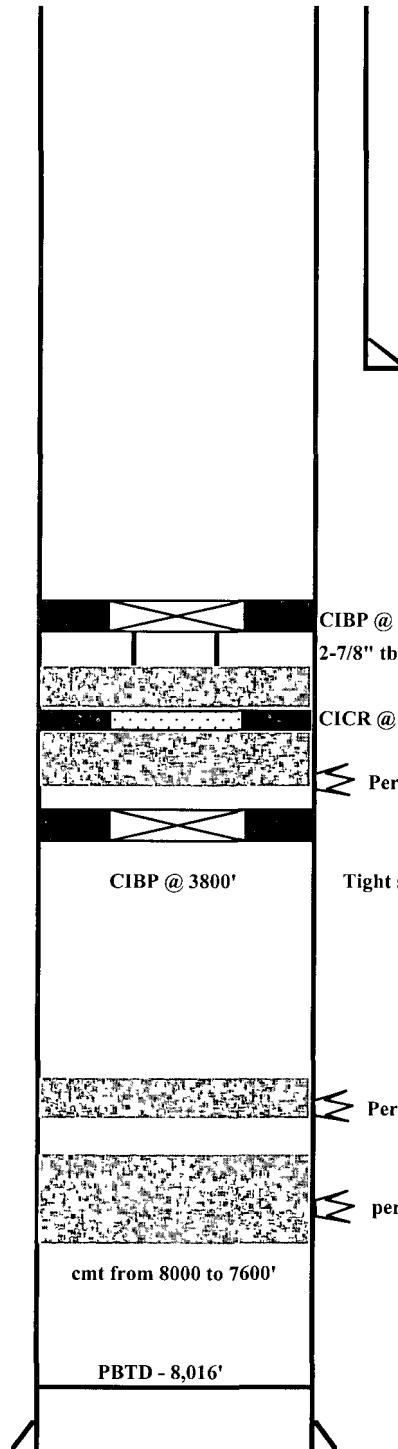
## CURRENT PERFS:

## SQUEEZE JOBS:

TBG: 2 7/8"  
JTS: 0  
SN: N  
TAC: N  
ROD SIZE: N

PKR: N  
TYPE:

OH ID:  
COTD:  
PBSD: 8,016'  
TD: 8,100'



CIBP @ 2773' cap w/48' cmt (TOC@2725')  
2-7/8" thg/fish top of fish @ 2777'

CICR @ 3660' w/100' on top

Perf @ 6138' w/6 holes sqz w/750 sx and circ to surface

CIBP @ 3800'

Tight spots @ 5445'

Perf @ 6138' w/6 holes sqz 3 sx C outside & 18 sx inside

perfs 7,724'-7,806'

cmt from 8000 to 7600'

PBSD - 8,016'

HOLE SIZE: 8 3/4"  
PROD. CSG & SIZE: 7" 23 & 29# S95, N80, & K55  
SET @: 8,100'  
SXS CMT: 225 sx  
CIRC: no  
TOC AT: 7,250'  
TOC BY: CBL

OPEN HOLE:

LINER:

BY: BHH  
5/22/2008

# PROPOSED WELLBORE DIAGRAM

Page 6 of 9

LEASE: South Boyd 27	WELL: 11	FIELD: Dagger Draw North	API: 30015308170000
LOC: 1,830' FNL and 1,830' FWL	SEC: 27	BLK:	Reservoir
SVY: T19S, R25E	GL: 3,460'	CTY/ST: Eddy County, NM	SPUD: 11/26/1999
CURRENT STATUS: Inactive (SI)	KB: 3,476'	DF:	TD DATE: 12/16/1999
			COMP. DATE: 1/7/2000

FRESH WATER  
DEPTH:

HOLE SIZE: 14 3/4"  
SURF CSG & SIZE: 9 5/8" 36# J55  
SET @: 1,106'  
SXS CMT: 1,500 sx  
CIRC: no  
TOC AT: 75'  
TOC BY: Tagged w/ 1" tbg

COMMENTS:

## \*\*\*\*\*GEOLOGY\*\*\*\*\*

2289', 2293', 2298', 2316', 2321', 2341',  
2353', 2359', 2378', 2388', 2400', 2406',  
2440', 2463', 2474', 2480', 2555', 2566',  
2634', 2646' @ 1 spf

PS OF ALL ZONES  
DUCTIVE OF HYDRO-  
RBONS:  
Andres: 740'  
arieta: 2345'  
Bone Springs: 3780'  
Wolfcamp: 6138'  
Canyon: 7685'

## CURRENT PERFS:

TBG: 2 7/8"  
JTS: 0  
SN: N  
TAC: N  
ROD SIZE: N

PKR: N  
TYPE:

CIBP @ 2773' cap w/48' cmt (TOC@2725')  
2-7/8" tbg/fish top of fish @ 2777'

CICR @ 3660' w/100' on top

Perf @ 6138' w/6 holes sqz w/750 sx and circ to surface

Tight spots @ 5445'

CIBP @ 3800'

Perf @ 6138' w/6 holes sqz 3 sx C outside & 18 sx inside

perfs 7,724'-7,806'

OH ID:  
COTD:

PBTD: 8,016'  
TD: 8,100'

cmt from 8000 to 7600'

PBTD - 8,016'

HOLE SIZE: 8 3/4"  
PROD. CSG & SIZE: 7" 23 & 29# S95, N80, & K55  
SET @: 8,100'  
SXS CMT: 225 sx  
CIRC: no  
TOC AT: 7,250'  
TOC BY: CBL

BY: BHH  
5/22/2008

OPEN HOLE:

LINER: