

OCD-ARTESIA

Form 3160-3
(August 1999)

MAY 23 2008
OCD-ARTESIA

UNITED STATES
DEPARTMENT OF THE INTERIOR
BUREAU OF LAND MANAGEMENT

R-111-POTASH

APPLICATION FOR PERMIT TO DRILL OR REENTER WIPP

S

0
OMB No. 1004-0136
Expires November 30, 2000

1a. Type of Work: <input checked="" type="checkbox"/> DRILL <input type="checkbox"/> REENTER		5. Lease Serial No. NM-81953
b. Type of Well: <input checked="" type="checkbox"/> Oil Well <input type="checkbox"/> Gas Well <input type="checkbox"/> Other <input type="checkbox"/> Single Zone <input type="checkbox"/> Multiple Zone		6. If Indian, Allottee or Tribe Name
2. Name of Operator Yates Petroleum Corporation 25575		7. If Unit or CA Agreement, Name and No
3A. Address 105 South Fourth Street Artesia, New Mexico 88210	3b. Phone No. (include area code) (505) 748-1471	8. Lease Name and Well No. 13749 Glow Worm ALX Federal #15H
4. Location of Well (Report location clearly and in accordance with any State requirements. *) At surface: 200' FNL & 1830' FEL, NWNE Pilot Hole At proposed prod. Zone: 330' FSL & 2310' FEL, SWSE Bottom Hole		9. API Well No. 30-015-36368
14. Distance in miles and direction from nearest town or post office* Approximately 23 miles east of Carlsbad, New Mexico. Carlsbad Controlled Water Basin		10. Field and Pool, or Exploratory Las Medanas Delaware
15. Distance from proposed* location to nearest property or lease line, ft (Also to nearest drig unit line, if any) 200'	16. No. of Acres in lease 1716.94	11. Sec., T., R., M., or Blk, and Survey or Area Section 4-T23S-R31E
18. Distance from proposed location* to nearest well, drilling, completed, applied for, on this lease, ft 120'	19. Proposed Depth 8010' TVD 12622' TMD	12. County or Parish Eddy
21. Elevations (Show whether DF, KDB, RT, GL, etc.) 3385' GL	22. Approximate date work will start* ASAP	13. State NM
20. BLM/BIA Bond No. on file NMB000434		17. Spacing Unit dedicated to this well W2E2
23. Estimated duration 60 days		

24. Attachments

The following, completed in accordance with the requirements of Onshore Oil and Gas Order No. 1, shall be attached to this form:

- | | |
|--|---|
| 1. Well plat certified by a registered surveyor | 4. Bond to cover the operations unless covered by an existing bond on file (see Item 20 above). |
| 2. A Drilling Plan | 5. Operator certification |
| 3. A Surface Use Plan (if the location is on National Forest System Lands, the SUPO shall be filed with the appropriate Forest Service Office) | 6. Such other site specific information and/or plans as may be required by the authorized office. |

25. Signature 	Name (Printed/Typed) Cy Cowan	Date 3/27/2008
-------------------	----------------------------------	-------------------

Regulatory Agent

Approved by (Signature) 	Name (Printed/Typed) Ron Dunton	Date MAY 15 2008
Title For STATE DIRECTOR	Office NM STATE OFFICE	

Application approval does not warrant or certify that the applicant holds legal or equitable title to those rights in the subject lease which would entitle the applicant to conduct operations thereon
Conditions of approval, if any, are attached.

APPROVAL FOR TWO YEARS

Title 18 U.S.C. Section 1001 and Title 43 U.S.C. Section 1212, make it a crime for any person knowingly and willfully to make to any department or agency of the United States any false, fictitious or fraudulent statements or representations as to any matter within its jurisdiction.

*(Instructions on reverse) C-144 attached

SEE ATTACHED FOR
CONDITIONS OF APPROV.

NOTE: New Pit Rule
NMAC 19-15-17

APPROVAL SUBJECT TO
GENERAL REQUIREMENTS
AND SPECIAL STIPULATIONS
ATTACHED

✓
6/1/08

DISTRICT I
1825 N. French Dr., Hobbs, NM 88240

DISTRICT II
1301 W. Grand Avenue, Artesia, NM 88210

DISTRICT III
1000 Rio Brazos Rd., Aztec, NM 87410

DISTRICT IV
1220 S. St. Francis Dr., Santa Fe, NM 87505

State of New Mexico
Energy, Minerals and Natural Resources Department

Form C-102
Revised October 12, 2005

Submit to Appropriate District Office
State Lease - 4 Copies
Fee Lease - 3 Copies

OIL CONSERVATION DIVISION
1220 South St. Francis Dr.
Santa Fe, New Mexico 87505

JUN 03 2008

OCD-ARTESIA

☐ AMENDED REPORT

WELL LOCATION AND ACREAGE DEDICATION PLAT

API Number	Pool Code 40297	Pool Name Las Medanos, Delaware
Property Code 13749	Property Name GLOW WORM "ALX" FEDERAL	Well Number 15H
GRID No. 025575	Operator Name YATES PETROLEUM CORP.	Elevation 3385'

Surface Location

UL or lot No.	Section	Township	Range	Lot Idn	Feet from the	North/South line	Feet from the	East/West line	County
B	4	23 S	31 E		200	NORTH	1830	EAST	EDDY

Bottom Hole Location If Different From Surface

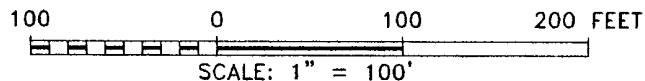
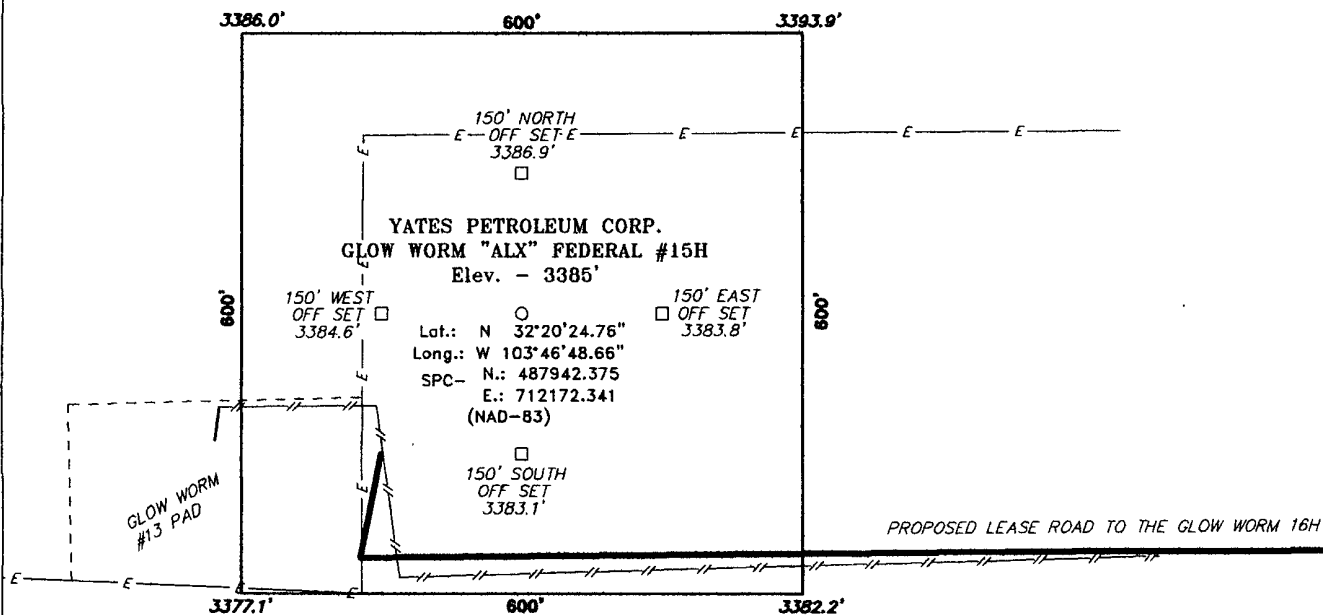
UL or lot No.	Section	Township	Range	Lot Idn	Feet from the	North/South line	Feet from the	East/West line	County
O	4	23 S	31 E		330	SOUTH	2310	EAST	EDDY

Dedicated Acres 160	Joint or Infill	Consolidation Code	Order No.
------------------------	-----------------	--------------------	-----------

NO ALLOWABLE WILL BE ASSIGNED TO THIS COMPLETION UNTIL ALL INTERESTS HAVE BEEN CONSOLIDATED
OR A NON-STANDARD UNIT HAS BEEN APPROVED BY THE DIVISION

<p>SURFACE LOCATION Lat - N32°20'24.76" Long - W103°46'48.66" SPC- N.: 487942.375 E.: 712172.341 (NAD-83)</p> <p>BOTTOM HOLE LOCATION Lat - N32°19'37.81" Long - W103°46'54.18" SPC- N.: 483194.848 E.: 711723.653 (NAD-83)</p> <p>PENETRATION POINT 541' ENL & 1864.5' EL</p> <p>Producing Area</p> <p>Project Area</p> <p>SEC. LN</p> <p>200'</p> <p>3386.0'</p> <p>3393.9'</p> <p>3377.1'</p> <p>3382.2'</p> <p>1830'</p> <p>20'</p> <p>4769.7'</p> <p>2310'</p> <p>330'</p> <p>NM-81953</p>	<p>OPERATOR CERTIFICATION</p> <p>I hereby certify that the information contained herein is true and complete to the best of my knowledge and belief, and that this organization either owns a working interest or unleased mineral interest in the land including the proposed bottom hole location pursuant to a contract with an owner of such a mineral or working interest, or to a voluntary pooling agreement or a compulsory pooling agreement entered by the division.</p> <p><i>Cy Cowan</i> 3/19/08 Signature Date</p> <p>Cy Cowan, Regulatory Printed Name Agent</p> <p>SURVEYOR CERTIFICATION</p> <p>I hereby certify that the well location shown on this plat was plotted from field notes of actual surveys made by me or under my supervision, and that the same is true and correct to the best of my belief.</p> <p>MARCH 12, 2008 Date Surveyed</p> <p><i>Gary L. Jones</i> Signature & Seal of Professional Surveyor</p> <p>W.O. 7977</p> <p>Certificate No. Gary L. Jones 7977</p> <p>BASIN SURVEYS</p>
--	--

**SECTION 4, TOWNSHIP 23 SOUTH, RANGE 31 EAST, N.M.P.M.,
EDDY COUNTY, NEW MEXICO.**



Directions to Location:

FROM THE JUNCTION OF CO. RD. 798 AND MILLS RANCH, GO WEST ON MILLS RANCH APPROX 2.2 MILES TO LEASE ROAD, ON LEASE ROAD GO 0.35 MILES TO LEASE ROAD, TURN WEST AND GO 0.4 MILES TO THE PROPOSED LEASE ROAD.

BASIN SURVEYS P.O. BOX 1786 -HOBBS, NEW MEXICO

W.O. Number: 18735 Drawn By: **J. M. SMALL**

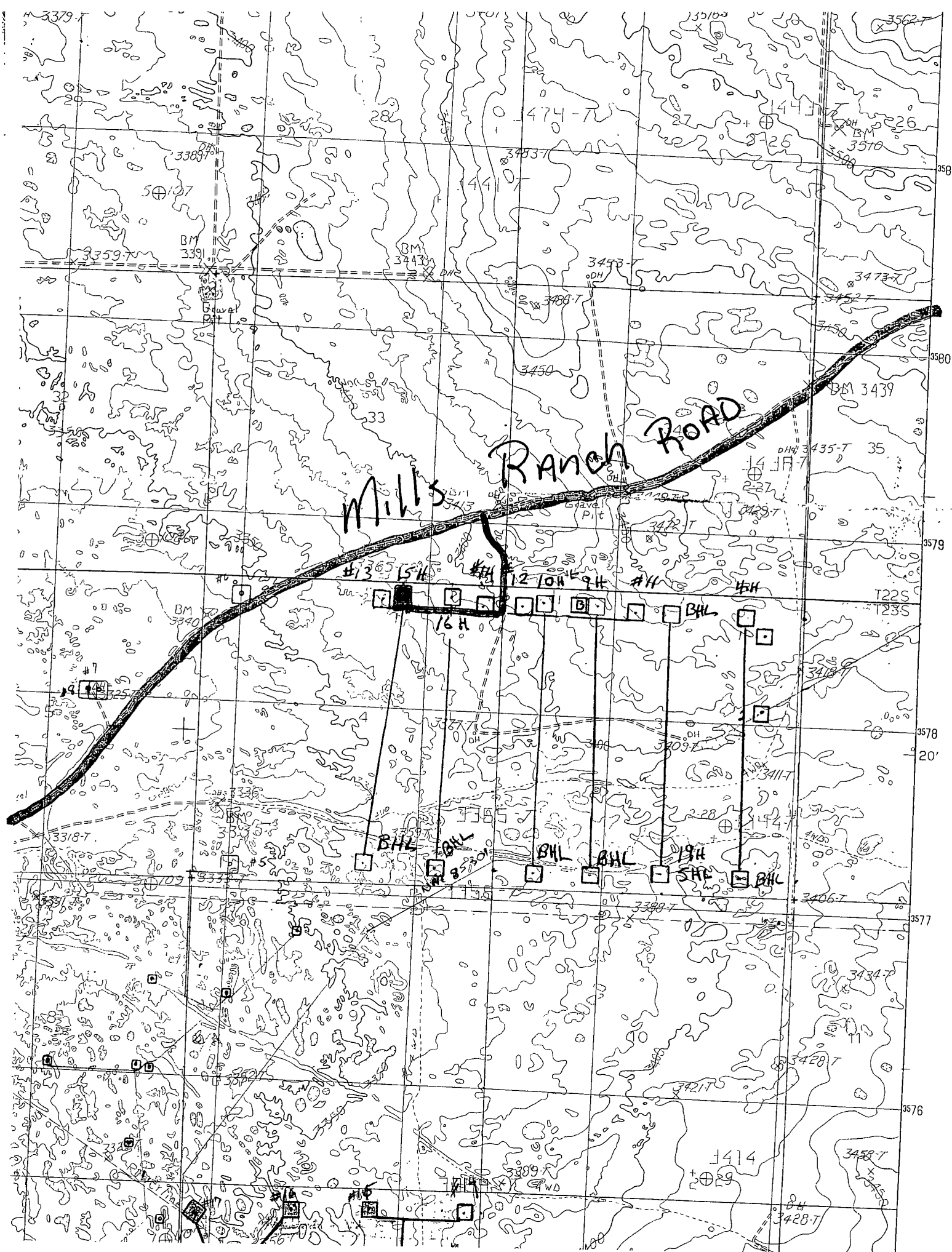
Date: 03-12-2008 Disk: 18735W JMS

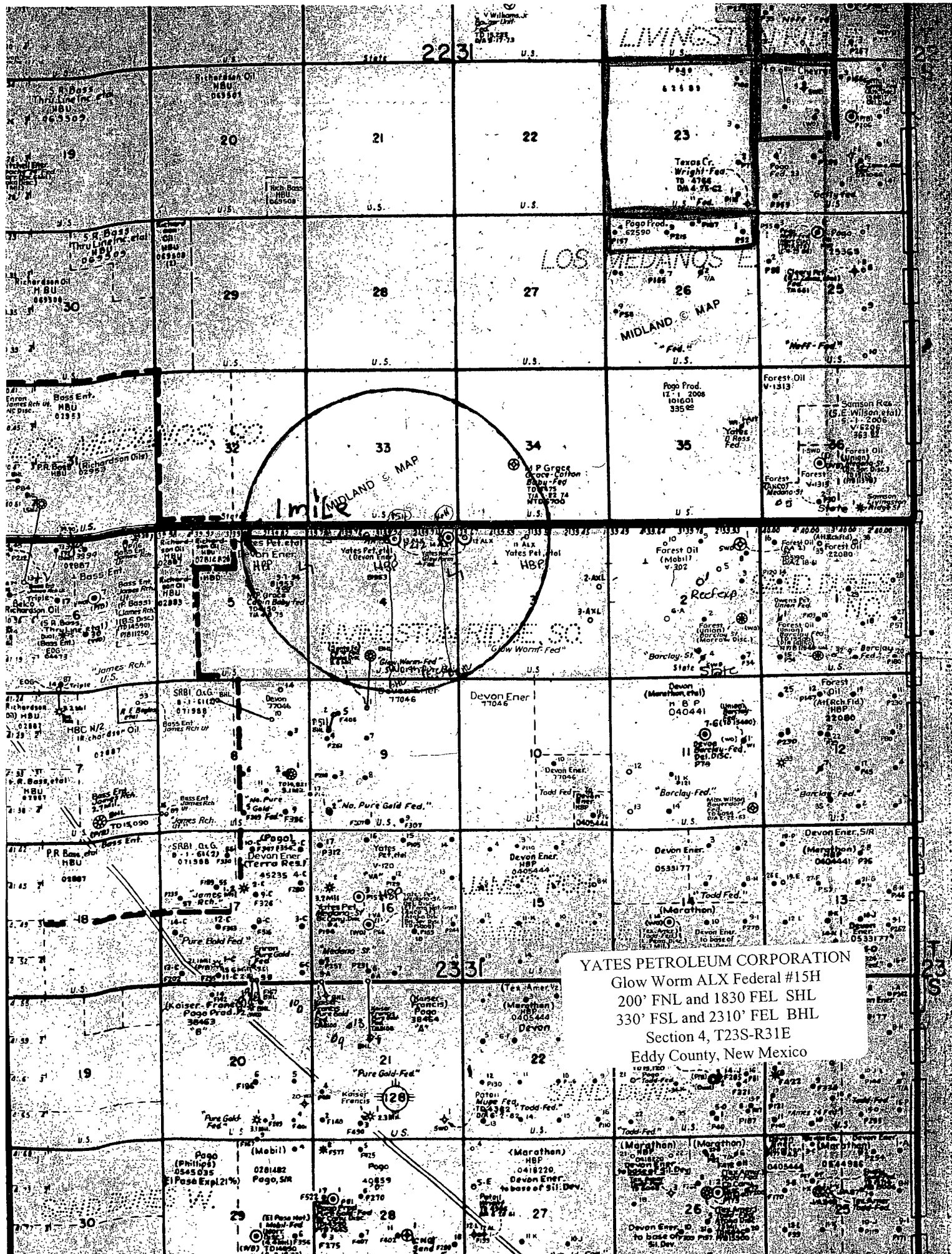
YATES PETROLEUM CORP.

REF: GLOW WORM "ALX" FEDERAL #15H / WELL PAD TOPO

THE GLOW WORM "ALX" FEDERAL #15H LOCATED 200'
FROM THE NORTH LINE AND 1830' FROM THE EAST LINE OF
SECTION 4, TOWNSHIP 23 SOUTH, RANGE 31 EAST,
N.M.P.M., EDDY COUNTY, NEW MEXICO.

Survey Date: 03-12-2008 Sheet 1 of 1 Sheets





YATES PETROLEUM CORPORATION
Glow Worm ALX Federal #15H
200' FNL and 1830' FEL, Surface Hole Location
330' FSL & 2310' FEL, Bottom Hole Location
Section 4-T23S-R31E
Eddy County, New Mexico

1. The estimated tops of geologic markers are as follows:

Permian		Surface	
Rustler		500'	
Base of Salt		3940'	
Bell Canyon	Oil Pay	4240'	
Cherry Canyon	Oil Pay	5316'	
Brushy Canyon	Gas Pay	6910'	
Brushy Canyon Marker	Gas Pay	7763'	
Brushy Sand Target	Gas Pay	8010' TVD	8191' MD
TD		12622'	

2. The estimated depths at which anticipated water, oil or gas formations are expected to be encountered:

Water: 354'
Oil or Gas: All potential zones.

3. Pressure Control Equipment: BOPE will be installed on the 13 3/8" and then the 9 5/8" casing and rated for 3000 BOP systems will be consistent with API RP 53. Yates request that a variance be given to test the BOP on the surface casing to 1000 psi using the rig pumps. Pressure tests will be conducted before drilling out from under all casing strings which are set and cemented in place. Blowout Preventor controls will be installed prior to drilling the surface plug and will remain in use until the well is completed or abandoned. Preventors will be inspected and operated at least daily to ensure good mechanical working order, and this inspection recorded on the daily drilling report. See Exhibit B.

Auxiliary Equipment:

- A. Auxiliary Equipment: Kelly cock, pit level indicators, flow sensor equipment and a sub with full opening valve to fit the drill pipe and collars will be available on the rig floor in the open position at all times for use when kelly is not in use.

4. THE PROPOSED CASING AND CEMENTING PROGRAM:

- A. Casing Program: (All New)

<u>Hole Size</u>	<u>Casing Size</u>	<u>Wt./Ft</u>	<u>Grade</u>	<u>Coupling</u>	<u>Interval</u>	<u>Length</u>
17 1/2"	13 3/8"	48#	H-40	ST&C	0-550'	550'
12 1/4"	9 5/8"	40#	J-55	ST&C	0-100'	100'
12 1/4"	9 5/8"	36#	J-55	ST&C	100-3300'	3200'
12 1/4"	9 5/8"	40#	J-55	ST&C	3300-4050	750'
8 3/4"	5 1/2"	20#	P-110	LT&C	0-2000'	2000'
8 3/4"	5 1/2"	17#	HCP-110	LT&C	2000'-12622'	10622'

Minimum Casing Design Factors: Burst 1.0, Joint Strength 1.8, Collapse 1.125

B. CEMENTING PROGRAM:

Surface casing: Lead with 250 sx C Lite(Wt 12.5 Yld 1.96) Tail in w/200 sx Class "C" + 2% CaCl₂ (Wt 14.8 Yld 1.34). Cement to Surface.

Intermediate Casing: Lead in with 1100 sx C Lite (Wt 12.6 Yld 2.0). Tail in w/250 sx Class C (Wt 14.8 Yld 1.34). Cement to Surface

Production Casing: Stage I TOC 6300'; 2250 sx Pecos VILt (Wt 13.0 Yld 1.41).

Stage II Lead with 550 sx LiteCrete (Wt 9.9 Yld 2.78) Tail in with 100 sx PecosVILt (Wt 13.0 Yld 1.41)

DV @ 6300' Per Operator 5-1-08

5. MUD PROGRAM AND AUXILIARY EQUIPMENT:

Interval	Type	Weight	Viscosity	Fluid Loss
0-550'	Fresh Water	8.6-9.2	32-34	N/C
550'-4050'	Brine Water	10.0-10.2	28	N/C
4050'-12622'	Cut Brine	8.5-8.8	28-29	N/C

Sufficient mud material(s) to maintain mud properties, control lost circulation and contain a blow out will be available at the well site during drilling operations. Mud will be checked hourly by rig personnel.

6. EVALUATION PROGRAM:

Samples: Every 10' from surface casing to TD.

Logging: None Anticipated.

Coring: None Anticipated

DST's: None Anticipated.

7. ABNORMAL CONDITIONS, BOTTOM HOLE PRESSURE, AND POTENTIAL HAZARDS:

Anticipated BHP:

From: 0	TO: 550'	Anticipated Max. BHP: 265	PSI
From: 550'	TO: 4050'	Anticipated Max. BHP: 2150	PSI
From: 4050'	TO: 8191' TVD	Anticipated Max. BHP: 3665	PSI

No abnormal pressures or temperatures are anticipated.

Lost Circulation Zones Anticipated: None

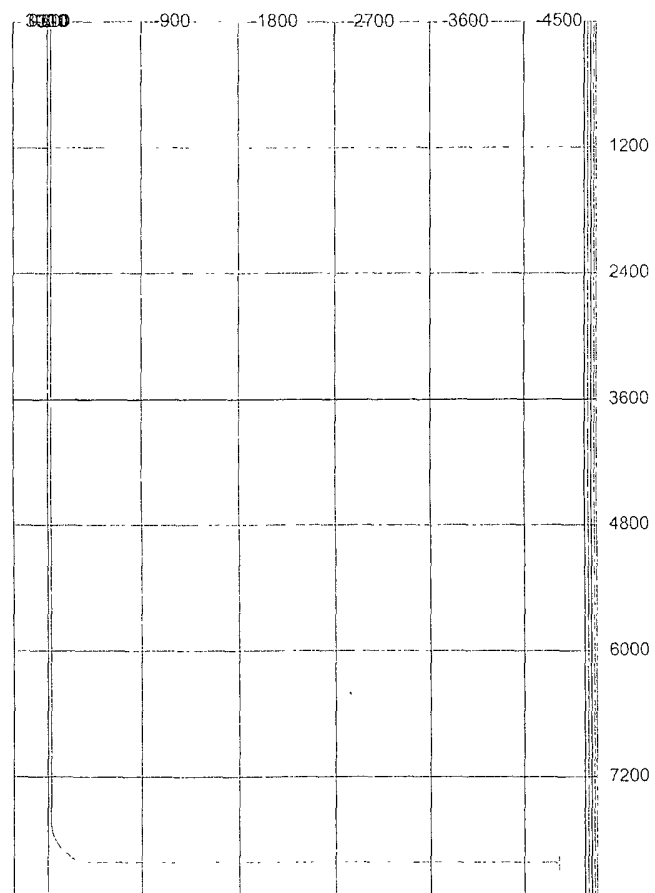
H₂S Zones Anticipated: H₂S water flow possible below 2800'.

8. ANTICIPATED STARTING DATE:

Plans are to drill this well as soon as possible after receiving approval. It should take approximately 30 days to drill the well with completion taking another 15 days.

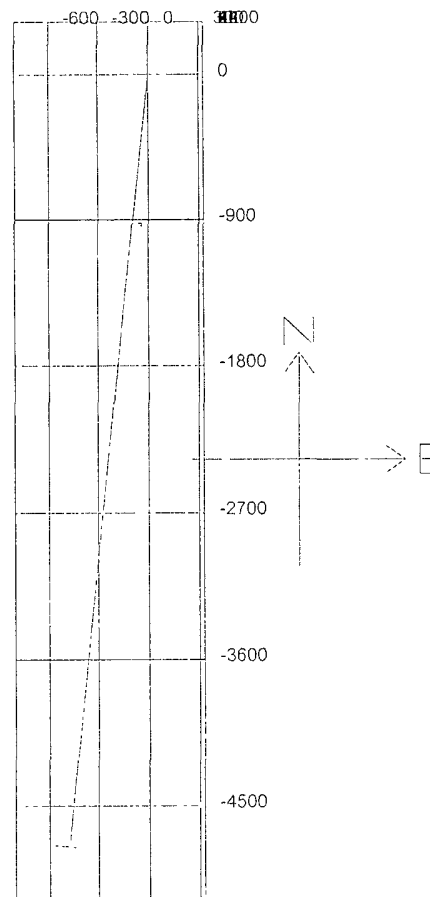
3D³ Directional Drilling Planner - 3D View

Company: Yates Petroleum Corporation
Well: Glow Worm ALX Federal #15H

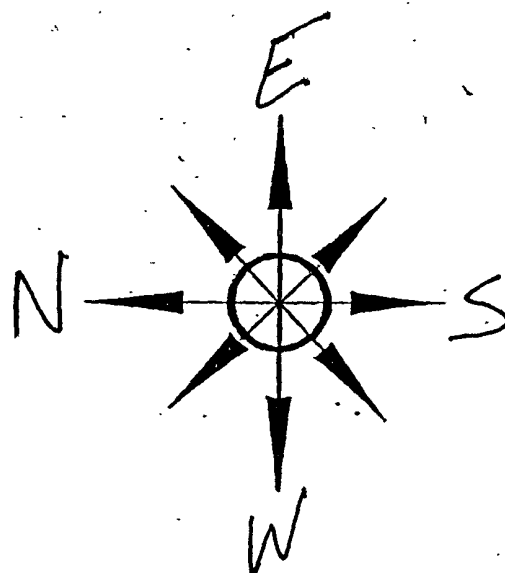


3D³ Directional Drilling Planner - 3D View

Company: Yates Petroleum Corporation
Well: Glow Worm ALX Federal #15H



M.D.	Inclination	Azimuth	T.V.D.	N+S	E+W	D.L.S.	ToolFace	T.F. Ref. [HS/GN]
0	0	0	0	0	0	0		
7630	0	0	7630	0	0	15	186	GN
7650	3	185.77	7649.99	-0.52	-0.05	15	360	HS
7675	6.75	185.77	7674.9	-2.63	-0.27	15	0	HS
7700	10.5	185.77	7699.61	-6.36	-0.64	15	360	HS
7725	14.25	185.77	7724.02	-11.69	-1.18	15	0	HS
7750	18	185.77	7748.04	-18.6	-1.88	15	0	HS
7775	21.75	185.77	7771.54	-27.06	-2.73	15	0	HS
7800	25.5	185.77	7794.44	-37.02	-3.74	15	0	HS
7825	29.25	185.77	7816.64	-48.46	-4.9	15	0	HS
7850	33	185.77	7838.04	-61.31	-6.2	15	360	HS
7875	36.75	185.77	7858.54	-75.53	-7.63	15	0	HS
7900	40.5	185.77	7878.07	-91.05	-9.2	15	360	HS
7925	44.25	185.77	7896.54	-107.82	-10.9	15	360	HS
7950	48	185.77	7913.86	-125.74	-12.71	15	360	HS
7975	51.75	185.77	7929.97	-144.76	-14.63	15	0	HS
8000	55.5	185.77	7944.79	-164.78	-16.65	15	360	HS
8025	59.25	185.77	7958.27	-185.73	-18.77	15	360	HS
8050	63	185.77	7970.34	-207.5	-20.97	15	0	HS
8075	66.75	185.77	7980.95	-230.02	-23.24	15	360	HS
8100	70.5	185.77	7990.06	-253.18	-25.58	15	360	HS
8125	74.25	185.77	7997.63	-276.88	-27.98	15	360	HS
8150	78	185.77	8003.63	-301.02	-30.42	15	360	HS
8175	81.75	185.77	8008.02	-325.5	-32.89	15	360	HS
8200	85.5	185.77	8010.79	-350.22	-35.39	15	0	HS
8225	89.25	185.77	8011.94	-375.06	-37.9	15	360	HS
8230 17	90.03	185.77	8011.97	-380.21	-38.42	15	0	HS
12622.22	90.03	185.77	8010	-4750	-480	0		



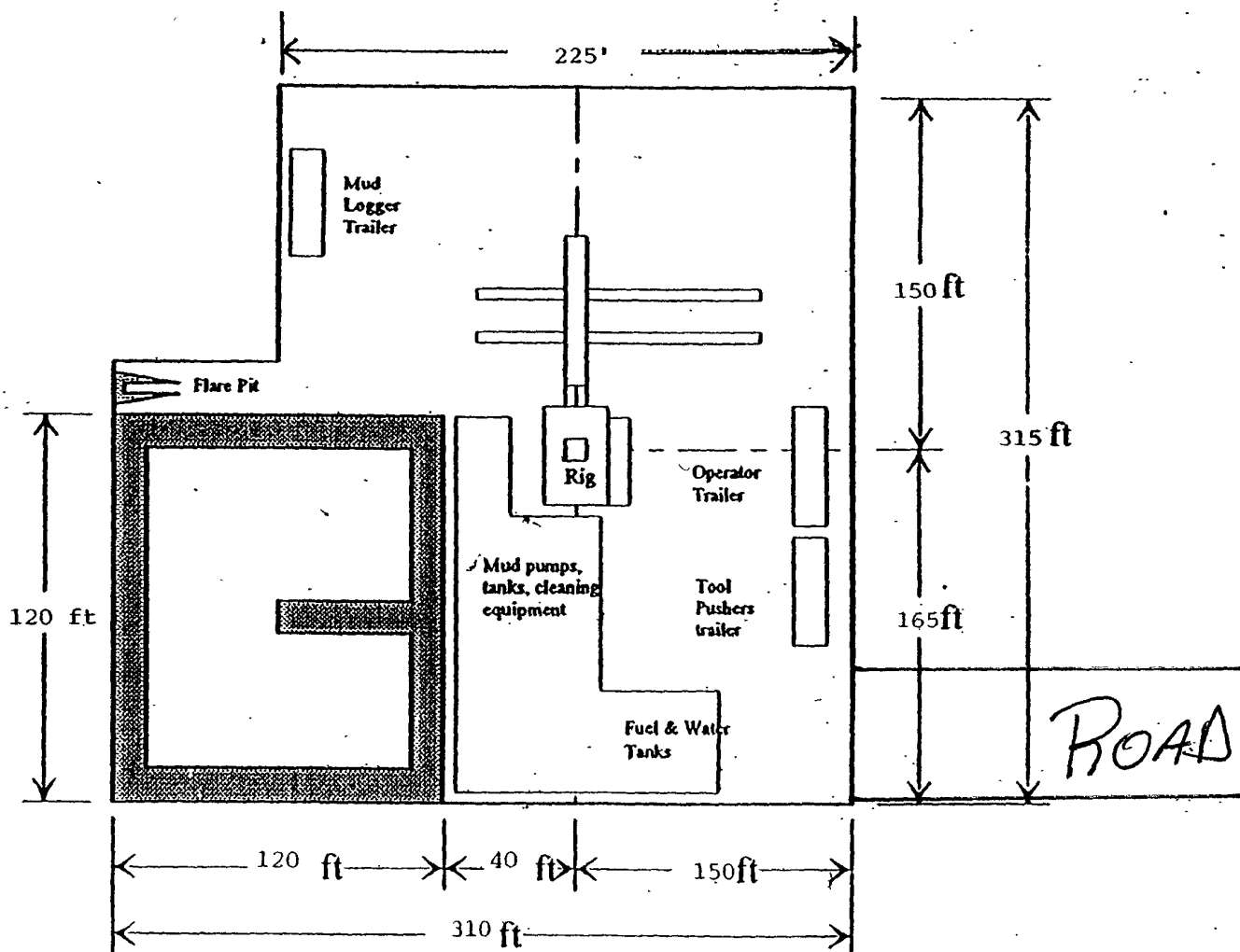
Yates Petroleum Corporation

Location Layout for Permian Basin
Up to 12,000'

PB - LI

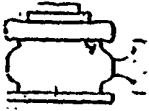
Pits North

YATES PETROLEUM CORPORATION
Glow Worm ALX Federal #15H
200' FNL and 1830 FEL SHL
330' FSL and 2310' FEL BHL
Section 4, T23S-R31E
Eddy County, New Mexico



Distance from Well
Head to Reserve Pit
will vary between rigs

The above dimension
should be a maximum



Yates Petroleum Corporation

BOP-3

Typical 3,000 psi Pressure System
Schematic

Annular with Double Ram Preventer Stack

YATES PETROLEUM CORPORATION

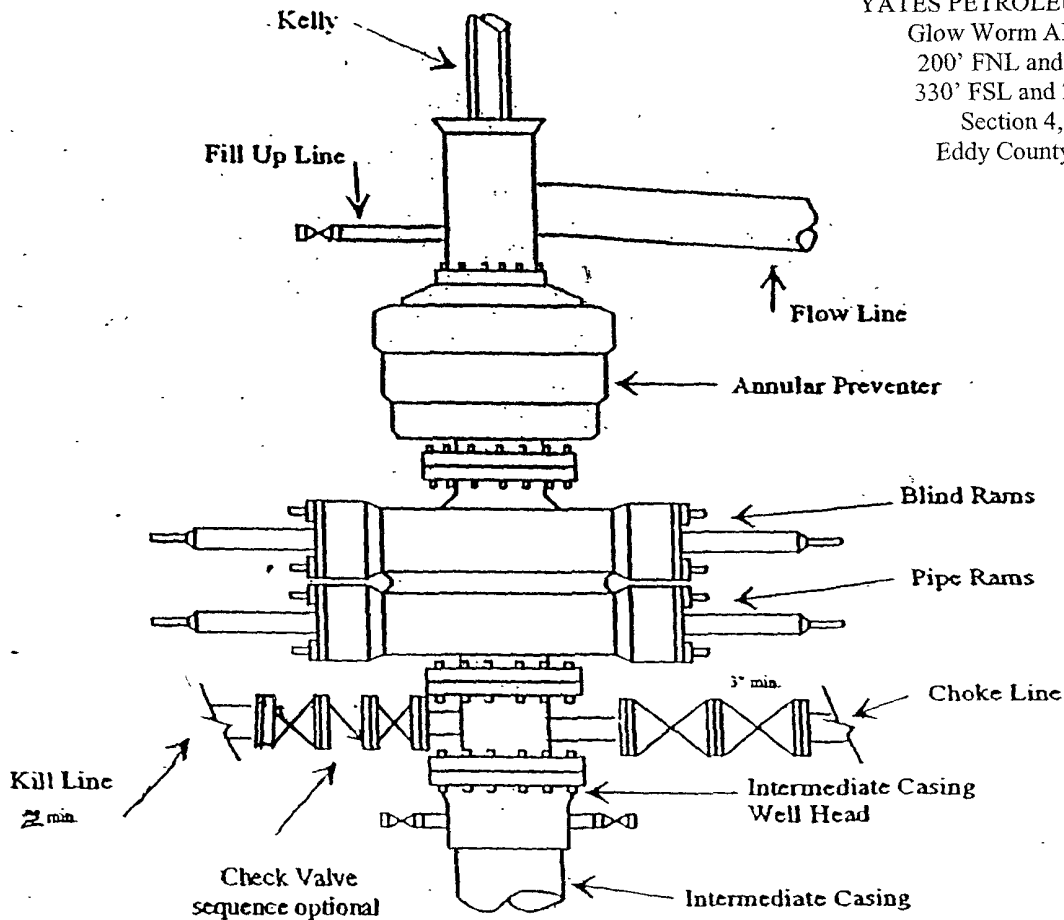
Glow Worm ALX Federal #15H

200' FNL and 1830 FEL SHL

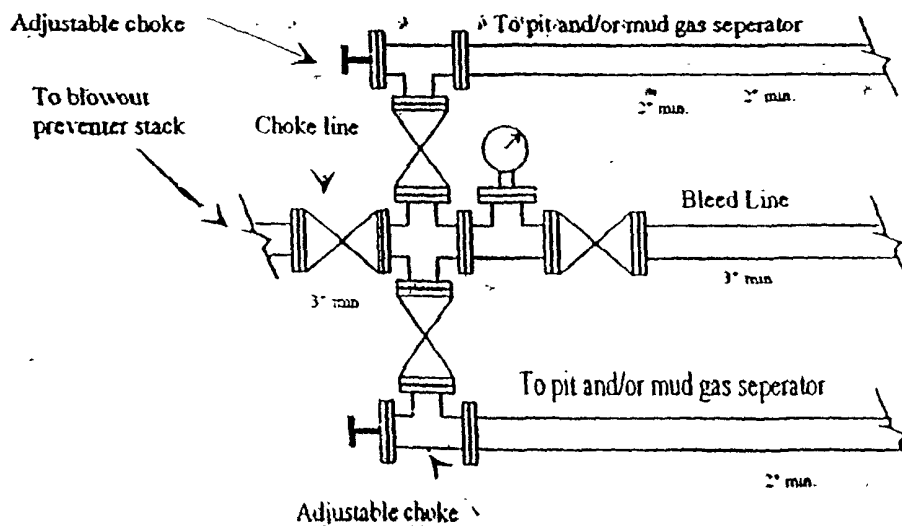
330' FSL and 2310' FEL BHL

Section 4, T23S-R31E

Eddy County, New Mexico



Typical 3,000 psi choke manifold assembly with at least these minimum features



Yates Petroleum Corporation

**105 S. Fourth Street
Artesia, NM 88210**

Hydrogen Sulfide (H₂S) Contingency Plan

For

Glow Worm AIX Federal #15H

200' FNL, 1830' FEL Surface Hole Location

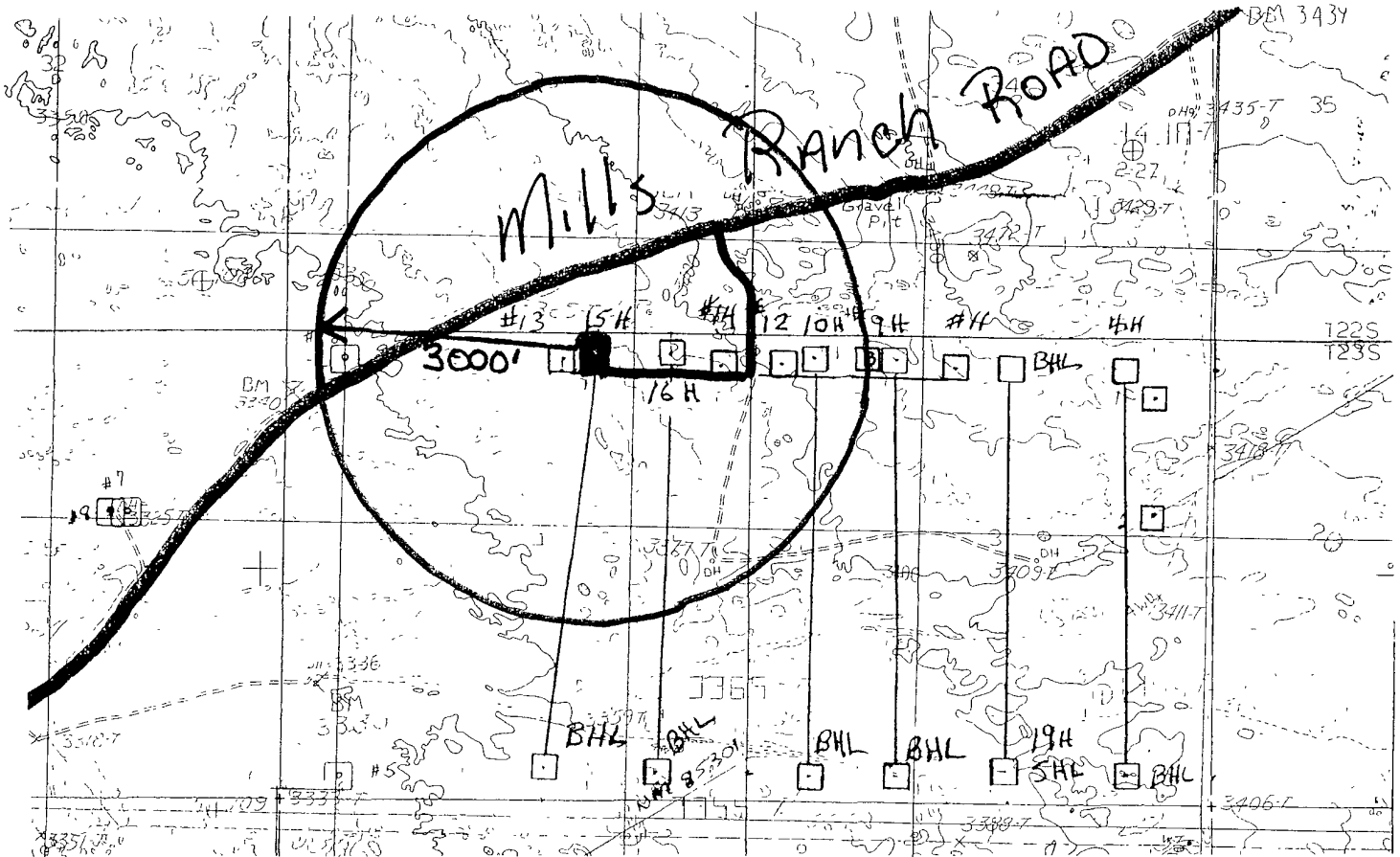
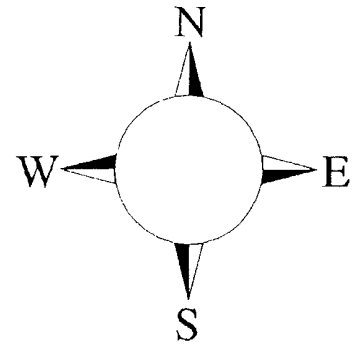
330' FSL and 2310' FEL Bottom Hole Location

Section 4 T-23S, R-31E

Eddy County NM

Glow Worm ALX Federal #15H Location

This is an open drilling site. H₂S monitoring equipment and emergency response equipment will be used within 500' of zones known to contain H₂S, including warning signs, wind indicators and H₂S monitor.



Assumed 100 ppm ROE = 3000'

100 ppm H₂S concentration shall trigger activation of this plan.

Emergency Procedures

In the case of a release of gas containing H₂S, the first responder(s) must isolate the area and prevent entry by other persons into the 100 ppm ROE. Additionally the first responder(s) must evacuate any public places encompassed by the 100 ppm ROE. First responder(s) must take care not to injure themselves during this operation. Company and/or local officials must be contacted to aid in this operation. Evacuation of the public should be beyond the 100 ppm ROE.

All responders must have training in the detection of H₂S, measures for protection against the gas, equipment used for protection and emergency response. Additionally, responders must be equipped with H₂S monitors and air packs in order to control the release. Use the “buddy system” to ensure no injuries during the response.

Ignition of Gas Source

Should control of the well be considered lost and ignition considered, take care to protect against exposure to Sulfur Dioxide (SO₂). Intentional ignition must be coordinated with the NMOCD and local officials. Additionally the NM State Police may become involved. NM State Police shall be the Incident Command on scene of any major release. Take care to protect downwind whenever there is an ignition of the gas

Characteristics of H₂S and SO₂

Common Name	Chemical Formula	Specific Gravity	Threshold Limit	Hazardous Limit	Lethal Concentration
Hydrogen Sulfide	H ₂ S	1.189 Air = 1	10 ppm	100 ppm/hr	600 ppm
Sulfur Dioxide	SO ₂	2.21 Air = 1	2 ppm	N/A	1000 ppm

Contacting Authorities

YPC personnel must liaison with local and state agencies to ensure a proper response to a major release. Additionally, the OCD must be notified of the release as soon as possible but no later than 4 hours. Agencies will ask for information such as type and volume of release, wind direction, location of release, etc. Be prepared with all information available. The following call list of essential and potential responders has been prepared for use during a release. YPC Company response must be in coordination with the State of New Mexico’s ‘Hazardous Materials Emergency Response Plan’ (HMER)

Yates Petroleum Corporation Phone Numbers

YPC Office	(505) 748-1471
Paul Ragsdale/Operations Manager	(505) 748-4520
Ron Beasley/Production Manager	(505) 748-4210
Wade Bennett/Prod Superintendent	(505) 748-4236
Mike Lankin/Drilling	(505) 748-4222
Paul Hanes/Prod. Foreman/Roswell	(505) 624-2805
Tim Bussell/Drilling Superintendent	(505) 748-4221
Artesia Answering Service	(505) 748-4302
(During non-office hours)	

Agency Call List

Eddy County (505)

Artesia

State Police	746-2703
City Police.....	746-2703
Sheriff's Office	746-9888
Ambulance	911
Fire Department	746-2701
LEPC (Local Emergency Planning Committee)	746-2122
NMOCD.....	748-1283

Carlsbad

State Police	885-3137
City Police.....	885-2111
Sheriff's Office	887-7551
Ambulance	911
Fire Department	885-2111
LEPC (Local Emergency Planning Committee).....	887-3798
US Bureau of Land Management	887-6544

New Mexico Emergency Response Commission (Santa Fe)	(505)476-9600
24 HR	(505) 827-9126
New Mexico State Emergency Operations Center.....	(505) 476-9635
National Emergency Response Center (Washington, DC)	...(800) 424-8802

Other

Boots & Coots IWC	1-800-256-9688 or (281) 931-8884
Cudd Pressure Control.....	(915) 699-0139 or (915) 563-3356
Halliburton	(505) 746-2757
B. J. Services.....	(505) 746-3569

Flight For Life -4000 24th St, Lubbock, TX	(806) 743-9911
Aerocare -Rr 3 Box 49f, Lubbock, TX	(806) 747-8923

Med Flight Air Amb 2301 Yale Blvd SE #D3, Albuq, NM(505) 842-4433
S B Air Med Svc 2505 Clark Carr Loop SE, Albuq, NM(505) 842-4949

MULTI-POINT SURFACE USE AND OPERATIONS PLAN
YATES PETROLEUM CORPORATION
Glow Worm ALX Federal #15H
200' FNL and 1830' FEL Surface Hole Location
330' FSL & 2310' FEL. Bottom Hole Location
Section 4-T23S-R31E
Eddy County, New Mexico

This plan is submitted with Form 3160-3, Application for Permit to Drill, covering the above described well. The purpose of this plan is to describe the location of the proposed well, the proposed construction activities and operations plan, the magnitude of the surface disturbance involved and the procedures to be followed in rehabilitating the surface after completion of the operations, so that a complete appraisal can be made of the environmental effect associated with the operations.

1. EXISTING ROADS:

Exhibit A is a portion of the BLM map showing the well and roads in the vicinity of the proposed location. The proposed well site is located approximately 23 miles east of Carlsbad, New Mexico and the access route to the location is indicated in red and green on Exhibit A.

DIRECTIONS:

Go East of Carlsbad on Highway 62-180 to Hwy 31. Turn south on Hwy 31 and go to Hwy 128 (Jal Highway). Turn east and go approx. 16 miles to Red Road (CR-802). Turn left on Red Rd. and go approx. 7 miles to Mills Ranch Road (CR-798). Turn left on Mills Ranch Road and go approx. 2.2 miles. Turn left here and go approx. 0.3 this to an existing lease road going west. Turn west here on the existing access road and go approximately .4 of a mile to the southeast corner of the proposed Glow Worm #15H location. Please note the Glow Worm 15H is located on the same well pad as the existing Glow Worm ALX Federal #13.

2. PLANNED ACCESS ROAD:

- A. The proposed access will follow an existing lease road going west for approximately .4 of a mile to the southeast corner of the drilling pad. The road will lie in a west to east direction.
- B. The existing road will be 14 feet in width (driving surface) and will be adequately drained to control runoff and soil erosion.
- C. The existing road will be bladed with drainage on one side. Some traffic turnouts may have been built.
- D. The route of the road is visible.
- E. Existing roads will be maintained in the same or better condition.

3. LOCATION OF EXISTING WELL:

- A. There is drilling activity within a one-mile radius of the well site.
- B. Exhibit D shows existing wells within a one-mile radius of the proposed well site.

4. LOCATION OF EXISTING AND/OR PROPOSED FACILITIES:

- A. There are production facilities on this lease at the present time.
- B. In the event that the well is productive, the necessary production facilities will be installed on the drilling pad. If the well is productive oil electrical power will be connected to the well facilities. No power will be required if the well is productive of gas.

5. LOCATION AND TYPE OF WATER SUPPLY:

- A. It is planned to drill the proposed well with a fresh water system. The water will be obtained from commercial sources and will be hauled to the location by truck over the existing and proposed roads shown in Exhibit A.

6. SOURCE OF CONSTRUCTION MATERIALS:

Dirt contractor will locate nearest pit and obtain any permits and materials needed for construction.

7. METHODS OF HANDLING WASTE DISPOSAL:

- A. Drill cuttings will be disposed of in the reserve pits.
- B. Drilling fluids will be allowed to evaporate in the reserve pits until the pits are dry. The construction and reclamation of the pits will meet Yates' approved plan with NMOCD.
- C. Water produced during operations will be collected in tanks until hauled to an approved disposal system, or separate disposal application will be submitted.
- D. Oil produced during operations will be stored in tanks until sold.
- E. Current laws and regulations pertaining to the disposal of human waste will be complied with.
- F. All trash, junk, and other waste materials will be contained in trash cages or bins to prevent scattering and will be removed and deposited in an approved sanitary landfill. Burial on site is not approved.

8. ANCILLARY FACILITIES:

None.

9. WELLSITE LAYOUT:

- A. Exhibit C shows the relative location and dimensions of the well pad, the reserve pits, the location of the drilling equipment, rig orientation and access road approach.
- B. The reserve pits will be plastic lined. Yates Petroleum Corporation is in full compliance with the OCD General Plan for Drilling Pits approved on April 15, 2004.
- C. A 600' x 600' area has been staked and flagged.

10. PLANS FOR RESTORATION:

- A. After finishing drilling and/or completion operations, all equipment and other material not needed for further operations will be removed. The location will be cleaned of all trash and junk to leave the well site in as aesthetically pleasing a condition as possible.

- B. Unguarded pits, if any, containing fluids will be fenced until they have dried and been leveled.
- C. If the proposed well is non-productive, all rehabilitation and/or vegetation requirements of the Bureau of Land Management will be complied with and will be accomplished as expeditiously as possible. All pits will be filled level after they have evaporated and dried.

11. SURFACE OWNERSHIP: Federal Surface, Administered by Bureau of Land Management, Carlsbad, New Mexico

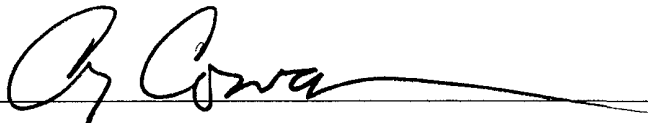
12. OTHER INFORMATION:

- A. Topography: Refer to the existing archaeological report for a description of the topography, flora, fauna, soil characteristics, dwellings, historical and cultural sites.
- B. The primary surface use is for grazing.

CERTIFICATION
YATES PETROLEUM CORPORATION

I hereby certify that I, or someone under my direct supervision, have inspected the drill site and access route proposed herein; that I am familiar with the conditions which currently exist; and an someone under employment of Yates Petroleum Corporation has full knowledge of state and federal laws applicable to this operation; that the statements made in this APD package are, to the best of my knowledge, true and correct; and that the work associated with the operations proposed herein will be performed in conformity with this APD package and the terms and conditions under which it is approved. I also certify that I, or the company I represent, am responsible for the operations conducted under this application. These statements are subject to the provisions of 18 U.S.C. 1001 for the filing of false statements.

Executed this 27th day of March, 20 08

Signature 

Name Cy Cowan

Position Title Regulatory Agent

Address 105 South Fourth Street, Artesia, New Mexico 88210

Telephone (505) 748-4372

Field Representative (if not above signatory) Tim Bussell, Drilling Supervisor

Address (if different from above) Same as above.

Telephone (if different from above) (505) 748-4221

E-mail (optional) _____

PECOS DISTRICT CONDITIONS OF APPROVAL

OPERATOR'S NAME:	Yates Petroleum Corp
LEASE NO.:	NM-81953
WELL NAME & NO.:	15H-Glow Worm ALX Federal
SURFACE HOLE FOOTAGE:	200' FNL & 1830' FEL
BOTTOM HOLE FOOTAGE	330' FSL & 2310' FEL
LOCATION:	Section 4, T. 23 S., R 31 E., NMPM
COUNTY:	Eddy County, New Mexico

TABLE OF CONTENTS

Standard Conditions of Approval (COA) apply to this APD. If any deviations to these standards exist or special COAs are required, the section with the deviation or requirement will be checked below.

- ☐ **General Provisions**
- ☐ **Permit Expiration**
- ☐ **Archaeology, Paleontology, and Historical Sites**
- ☐ **Noxious Weeds**
- ☒ **Special Requirements**
 - Lesser Prairie Chicken
- ☐ **Construction**
 - Notification
 - Topsoil
 - Reserve Pit
 - Federal Mineral Material Pits
 - Well Pads
 - Roads
- ☐ **Road Section Diagram**
- ☒ **Drilling**
- ☐ **Production (Post Drilling)**
 - Well Structures & Facilities
- ☐ **Reserve Pit Closure/Interim Reclamation**
- ☐ **Final Abandonment/Reclamation**

I. GENERAL PROVISIONS

The approval of the Application For Permit To Drill (APD) is in compliance with all applicable laws and regulations: 43 Code of Federal Regulations 3160, the lease terms, Onshore Oil and Gas Orders, Notices To Lessees, New Mexico Oil Conservation Division (NMOCD) Rules, National Historical Preservation Act As Amended, and instructions and orders of the Authorized Officer. Any request for a variance shall be submitted to the Authorized Officer on Form 3160-5, Sundry Notices and Report on Wells.

II. PERMIT EXPIRATION

If the permit terminates prior to drilling and drilling cannot be commenced within 60 days after expiration, an operator is required to submit Form 3160-5, Sundry Notices and Reports on Wells, requesting surface reclamation requirements for any surface disturbance. However, if the operator will be able to initiate drilling within 60 days after the expiration of the permit, the operator must have set the conductor pipe in order to allow for an extension of 60 days beyond the expiration date of the APD. (Filing of a Sundry Notice is required for this 60 day extension.)

III. ARCHAEOLOGICAL, PALEONTOLOGY & HISTORICAL SITES

Any cultural and/or paleontological resource discovered by the operator or by any person working on the operator's behalf shall immediately report such findings to the Authorized Officer. The operator is fully accountable for the actions of their contractors and subcontractors. The operator shall suspend all operations in the immediate area of such discovery until written authorization to proceed is issued by the Authorized Officer. An evaluation of the discovery shall be made by the Authorized Officer to determine the appropriate actions that shall be required to prevent the loss of significant cultural or scientific values of the discovery. The operator shall be held responsible for the cost of the proper mitigation measures that the Authorized Officer assesses after consultation with the operator on the evaluation and decisions of the discovery. Any unauthorized collection or disturbance of cultural or paleontological resources may result in a shutdown order by the Authorized Officer.

IV. NOXIOUS WEEDS

The operator shall be held responsible if noxious weeds become established within the areas of operations. Weed control shall be required on the disturbed land where noxious weeds exist, which includes the roads, pads, associated pipeline corridor, and adjacent land affected by the establishment of weeds due to this action. The operator shall consult with the Authorized Officer for acceptable weed control methods, which include following EPA and BLM requirements and policies.

V. SPECIAL REQUIREMENT(S)

Timing Limitation Stipulation/Condition of Approval for Lesser Prairie-Chicken: Oil and gas activities including 3-D geophysical exploration, and drilling will not be allowed in lesser prairie-chicken habitat during the period from March 15 through June 15 annually. During that period, other activities that produce noise or involve human activity, such as the maintenance of oil and gas facilities, geophysical exploration other than 3-D operations, and pipeline, road, and well pad construction, will be allowed except between 3:00 am and 9:00 am. The 3:00 am to 9:00 am restriction will not apply to normal, around-the-clock operations, such as venting, flaring, or pumping, which do not require a human presence during this period. Additionally, no new drilling will be allowed within up to 200 meters of leks known at the time of permitting. Normal vehicle use on existing roads will not be restricted. Exhaust noise from pump jack engines must be muffled or otherwise controlled so as not to exceed 75 db measured at 30 ft. from the source of the noise.

VI. CONSTRUCTION

A. NOTIFICATION

The BLM shall administer compliance and monitor construction of the access road and well pad. Notify the Carlsbad Field Office at (505) 234-5972 at least 3 working days prior to commencing construction of the access road and/or well pad.

When construction operations are being conducted on this well, the operator shall have the approved APD and Conditions of Approval (COA) on the well site and they shall be made available upon request by the Authorized Officer.

B. TOPSOIL

There is no measurable soil on this well pad to stockpile. No topsoil stockpile is required.

C. RESERVE PITS

The reserve pit shall be constructed and closed in accordance with the NMOCD rules.

The reserve pit shall be constructed 120' X 120' on the North side of the well pad.

The reserve pit shall be constructed, so that upon completion of drilling operations, the dried pit contents shall be buried a minimum depth of three feet below ground level. Should the pit content level not meet the three foot minimum depth requirement, the excess contents shall be removed until the required minimum depth of three feet below ground level has been met. The operator shall properly dispose of the excess contents at an authorized disposal site.

The reserve pit shall be constructed and maintained so that runoff water from outside the location is not allowed to enter the pit. The berms surrounding the entire perimeter of the pit shall extend a minimum of two (2) feet above ground level. At no time will standing fluids in the pit be allowed to rise above ground level.

The reserve pit shall be fenced on three (3) sides during drilling operations. The fourth side shall be fenced immediately upon rig release.

D. FEDERAL MINERAL MATERIALS PIT

If the operator elects to surface the access road and/or well pad, mineral materials extracted during construction of the reserve pit may be used for surfacing the well pad and access road and other facilities on the lease.

Payment shall be made to the BLM prior to removal of any additional federal mineral materials from any site other than the reserve pit. Call the Carlsbad Field Office at (505) 234-5972.

E. WELL PAD SURFACING

Surfacing of the well pad is not required.

If the operator elects to surface the well pad, the surfacing material may be required to be removed at the time of reclamation.

The well pad shall be constructed in a manner which creates the smallest possible surface disturbance, consistent with safety and operational needs.

F. ON LEASE ACCESS ROADS

Road Width

The access road shall have a driving surface that creates the smallest possible surface disturbance and does not exceed fourteen (14) feet in width. The maximum width of surface disturbance, when constructing the access road, shall not exceed thirty (30) feet.

Surfacing

Surfacing material is not required on the new access road driving surface. If the operator elects to surface the new access road or pad, the surfacing material may be required to be removed at the time of reclamation.

Where possible, no improvements should be made on the unsurfaced access road other than to remove vegetation as necessary, road irregularities, safety issues, or to fill low areas that may sustain standing water.

The Authorized Officer reserves the right to require surfacing of any portion of the access road at any time deemed necessary. Surfacing may be required in the event the road deteriorates, erodes, road traffic increases, or it is determined to be beneficial for future field development. The surfacing depth and type of material will be determined at the time of notification.

Crowning

Crowning shall be done on the access road driving surface. The road crown shall have a grade of approximately 2% (i.e., a 1" crown on a 14' wide road). The road shall conform to Figure 1; cross section and plans for typical road construction.

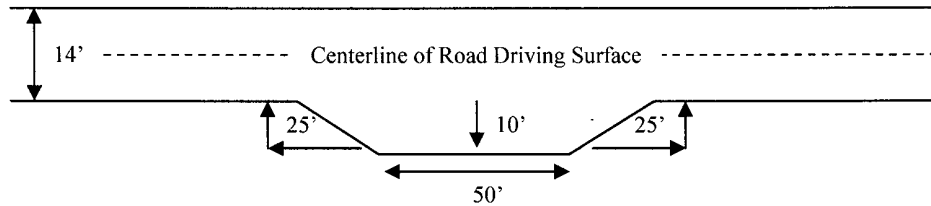
Ditching

Ditching shall be required on both sides of the road.

Turnouts

Vehicle turnouts shall be constructed on the road. Turnouts shall be intervisible with interval spacing distance less than 1000 feet. Turnouts shall be constructed on all blind curves. Turnouts shall conform to the following diagram:

Standard Turnout – Plan View

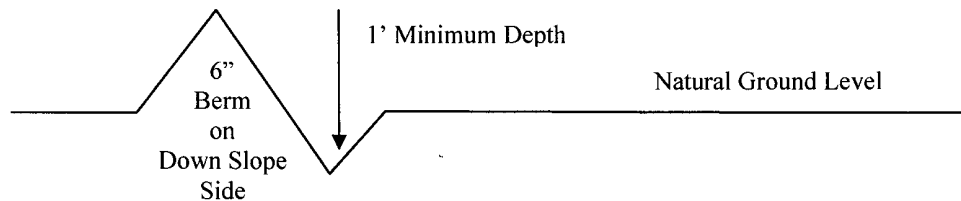


Drainage

Drainage control systems shall be constructed on the entire length of road (e.g. ditches, sidehill outsloping and insloping, lead-off ditches, culvert installation, and low water crossings).

A typical lead-off ditch has a minimum depth of 1 foot below and a berm of 6 inches above natural ground level. The berm shall be on the down-slope side of the lead-off ditch.

Cross Section of a Typical Lead-off Ditch



All lead-off ditches shall be graded to drain water with a 1 percent minimum to 3 percent maximum ditch slope. The spacing interval are variable for lead-off ditches and shall be determined according to the formula for spacing intervals of lead-off ditches, but may be amended depending upon existing soil types and centerline road slope (in %);

Formula for Spacing Interval of Lead-off Ditches

Example - On a 4% road slope that is 400 feet long, the water flow shall drain water into a lead-off ditch. Spacing interval shall be determined by the following formula:

$$400 \text{ foot road with } 4\% \text{ road slope: } \frac{400'}{4\%} + 100' = 200' \text{ lead-off ditch interval}$$

Culvert Installations

Appropriately sized culvert(s) shall be installed at the deep waterway channel flow crossing.

Cattleguards

An appropriately sized cattleguard(s) sufficient to carry out the project shall be installed and maintained at fence crossing(s).

Any existing cattleguard(s) on the access road shall be repaired or replaced if they are damaged or have deteriorated beyond practical use. The operator shall be responsible for the condition of the existing cattleguard(s) that are in place and are utilized during lease operations.

A gate shall be constructed and fastened securely to H-braces.

Fence Requirement

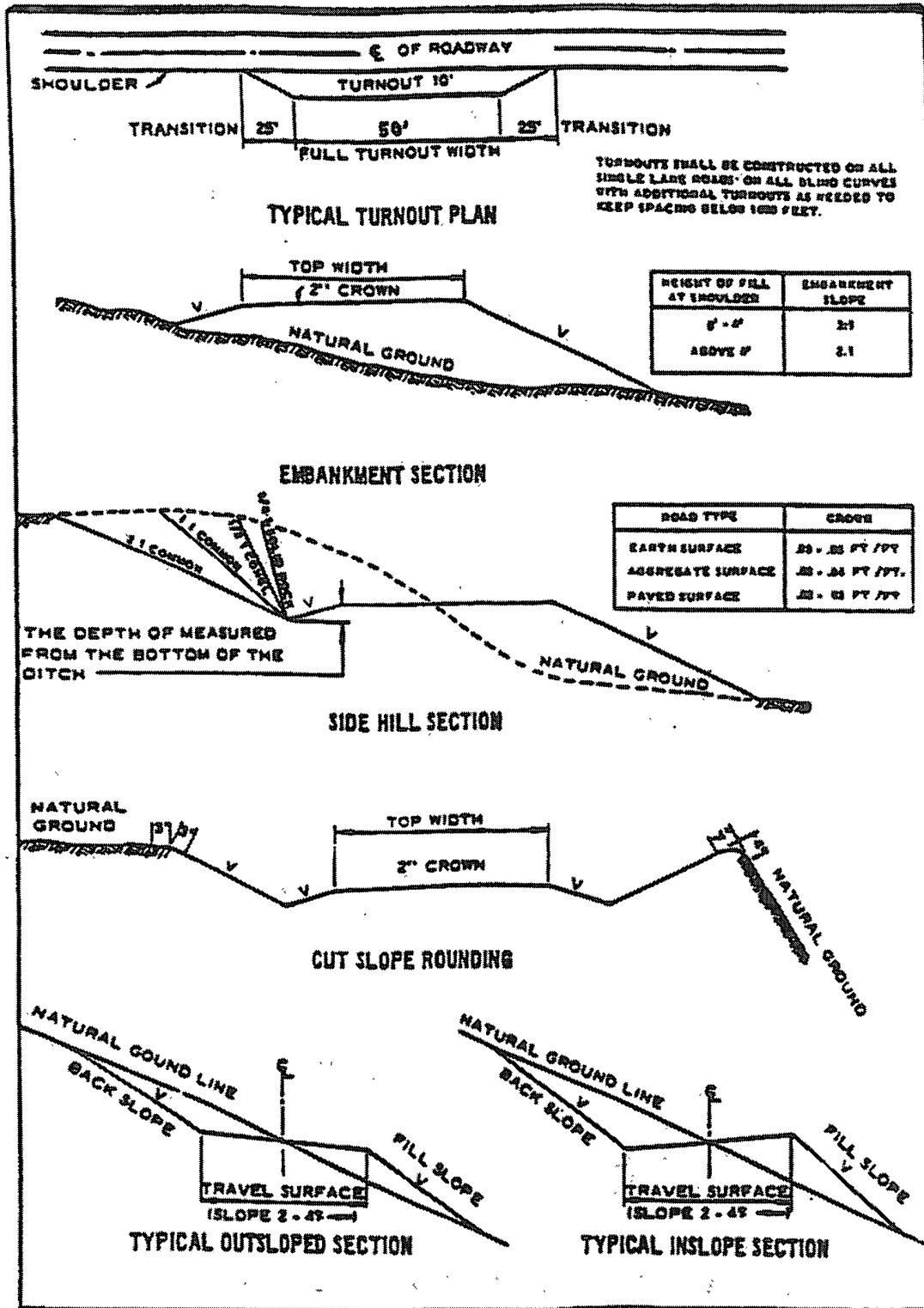
Where entry is required across a fence line, the fence shall be braced and tied off on both sides of the passageway prior to cutting.

The operator shall notify the private surface landowner or the grazing allotment holder prior to crossing any fence(s).

Public Access

Public access on this road shall not be restricted by the operator without specific written approval granted by the Authorized Officer.

Figure 1 – Cross Sections and Plans For Typical Road Sections



VII. DRILLING

A. DRILLING OPERATIONS REQUIREMENTS

The BLM is to be notified a minimum of **4 hours** in advance for a representative to witness:

- a. Spudding well
- b. Setting and/or Cementing of all casing strings
- c. BOP/BOPE tests

☒ **Eddy County**

Call the Carlsbad Field Office, 620 East Greene St., Carlsbad, NM 88220,
(575) 361-2822

1. **A Hydrogen Sulfide (H₂S) Drilling Plan should be activated below the Rustler Anhydrite. If Hydrogen Sulfide is encountered, please provide measured values and formations to the BLM.**
2. Unless the production casing has been run and cemented or the well has been properly plugged, the drilling rig shall not be removed from over the hole without prior approval.
3. Floor controls are required for 3M or Greater systems. These controls will be on the rig floor, unobstructed, readily accessible to the driller and will be operational at all times during drilling and/or completion activities. Rig floor is defined as the area immediately around the rotary table; the area immediately above the substructure on which the draw works are located, this does not include the dog house or stairway area.
4. Gamma-Ray/Neutron logs shall be run from the base of the Salado formation to the surface. The logs shall be run at a speed which allows the logs to be legible and no faster than manufactures of the logging tools recommended speed.

B. CASING

Changes to the approved APD casing and cement program require submitting a sundry and receiving approval prior to work

Centralizers required on surface casing as per Onshore Order 2.III.B.1.f

H₂S plan in effect

Possible lost circulation in Delaware, Bone Spring Formations

Possible H₂O flows in Salado, Castile, Delaware, Bone Spring

R-111-P potash

1. The 13-3/8 inch surface casing shall be set at **approximately 550 feet (a minimum of 25 feet into the top of the Rustler Anhydrite and above the salt)** and cemented to the surface.

Provide compressive strengths including hours to reach required 500 pounds compressive strength prior to cementing

- a. If cement does not circulate to the surface, the appropriate BLM office shall be notified and a temperature survey utilizing an electronic type temperature survey with surface log readout will be used or a cement bond log shall be run to verify the top of the cement.
 - b. Wait on cement (WOC) time for a primary cement job will be a minimum 18 hours for a water basin, 24 hours in the potash area, or 500 pounds compressive strength, whichever is greater. (This is to include the lead cement).
 - c. Wait on cement (WOC) time for a remedial job will be a minimum of 4 hours after bringing cement to surface or 500 pounds compressive strength, whichever is greater.
 - d. If cement falls back, remedial cementing will be done prior to drilling out that string.
2. The minimum required fill of cement behind the 9-5/8 inch intermediate casing is:

☒ Cement to surface. If cement does not circulate see B.1.a-d above.

Provide compressive strengths including hours to reach required 500 pounds compressive strength prior to cementing

3. The minimum required fill of cement behind the 5-1/2 inch production casing is:

a. **First stage to DV tool, cement shall:**

☒ Cement to circulate. If cement does not circulate, contact the appropriate BLM office, before proceeding with second stage cement job.

b. **Second stage above DV tool, cement shall:**

☒ Cement to surface. If cement does not circulate, contact the appropriate BLM office.

Centralizers required on horizontal leg, must be type for horizontal service and minimum of one every other joint

If hardband drill pipe is rotated inside casing, returns will be monitored for metal. If metal is found in samples, drill pipe will be pulled and rubber protectors which have a larger diameter than the tool joints of the drill pipe will be installed prior to continuing drilling operations.

4. **Whenever a casing string is cemented in the R-111-P potash area, the NMOCD requirements shall be followed.**

C. PRESSURE CONTROL

1. All blowout preventer (BOP) and related equipment (BOPE) shall comply with well control requirements as described in Onshore Oil and Gas Order No. 2 and API RP 53 Sec. 17.
2. The appropriate BLM office shall be notified a minimum of **4 hours** in advance for a representative to witness the tests.
 - a. The tests shall be done by an independent service company.
 - b. The results of the test shall be reported to the appropriate BLM office.
 - c. All tests are required to be recorded on a calibrated test chart. A copy of the BOP/BOPE test chart and a copy of independent service company test will be submitted to the appropriate BLM office.
 - d. The BOP/BOPE test shall include a low pressure test from 250 to 300 psi. The test will be held for a minimum of 10 minutes if test is done with a test plug and 30 minutes without a test plug.
 - e. A variance to test the surface casing and BOP/BOPE (**entire system**) to the reduced pressure of 1000 psi with the rig pumps is approved.

D. DRILL STEM TEST

If drill stem tests are performed, Onshore Order 2.III.D shall be followed.

E. WIPP Requirements

The proposed well is located within 330' of the WIPP Land Withdrawal Area boundary. As a result, Yates Petroleum Corporation is required to submit daily logs and deviation survey information to the Department of Energy per requirements of the Joint Powers Agreement. Information from this well will be included in the Quarterly Drilling Report. Information will also be provided to the New Mexico Oil Conservation Division after drilling activities have been completed. Any future entry into the well for purposes of completing additional drilling will require supplemental information.

Yates Petroleum Corporation can email the required information to Mr. Gene Valett at gene.valett@wipp.ws or fax to his attention at 575-234-6062.

LB 5/1/08

VIII. PRODUCTION (POST DRILLING)

A. WELL STRUCTURES & FACILITIES

Placement of Production Facilities

Production facilities should be placed on the well pad to allow for maximum interim recontouring and revegetation of the well location.

Containment Structures

The containment structure shall be constructed to hold the capacity of the entire contents of the largest tank, plus 24 hour production, unless more stringent protective requirements are deemed necessary by the Authorized Officer.

Painting Requirement

All above-ground structures including meter housing that are not subject to safety requirements shall be painted a flat non-reflective paint color
Shale Green, Munsell Soil Color Chart # 5Y 4/2

IX. INTERIM RECLAMATION & RESERVE PIT CLOSURE

A. INTERIM RECLAMATION

If the well is a producer, interim reclamation shall be conducted on the well site in accordance with the orders of the Authorized Officer. The operator shall submit a Sundry Notices and Reports on Wells (Notice of Intent), Form 3160-5, prior to conducting interim reclamation.

During the life of the development, all disturbed areas not needed for active support of production operations should undergo interim reclamation in order to minimize the environmental impacts of development on other resources and uses.

At the time reserve pits are to be reclaimed, operators should work with BLM surface management specialists to devise the best strategies to reduce the size of the location. Any reductions should allow for remedial well operations, as well as safe and efficient removal of oil and gas.

During reclamation, the removal of caliche is important to increasing the success of revegetating the site. Removed caliche may be used for road repairs, fire walls or for building other roads and locations. In order to operate the well or complete workover operations, it may be necessary to drive, park and operate on restored interim vegetation within the previously disturbed area. Disturbing revegetated areas for production or workover operations will be allowed. If there is significant disturbance and loss of vegetation, the area will need to be revegetated. Communicate with the appropriate BLM office for any exceptions/exemptions if needed.

B. RESERVE PIT CLOSURE

The reserve pit, when dried and closed, shall be recontoured, all trash removed, and reseeded as follows:

Seed Mixture for LPC Sand/Shinnery Sites

The holder shall seed all disturbed areas with the seed mixture listed below. The seed mixture shall be planted in the amounts specified in pounds of pure live seed (PLS)* per acre. There shall be no primary or secondary noxious weeds in the seed mixture. Seed will be tested and the viability testing of seed will be done in accordance with State law(s) and within nine (9) months prior to purchase. Commercial seed will be either certified or registered seed. The seed container will be tagged in accordance with State law(s) and available for inspection by the authorized officer.

Seed will be planted using a drill equipped with a depth regulator to ensure proper depth of planting where drilling is possible. The seed mixture will be evenly and uniformly planted over the disturbed area (smaller/heavier seeds have a tendency to drop the bottom of the drill and are planted first). The holder shall take appropriate measures to ensure this does not occur. Where drilling is not possible, seed will be broadcast and the area shall be raked or chained to cover the seed. When broadcasting the seed, the pounds per acre are to be doubled. The seeding will be repeated until a satisfactory stand is established as determined by the authorized officer. Evaluation of growth will not be made before completion of at least one full growing season after seeding.

Species to be planted in pounds of pure live seed* per acre:

<u>Species</u>	<u>lb/acre</u>
Plains Bristlegrass	5lbs/A
Sand Bluestem	5lbs/A
Little Bluestem	3lbs/A
Big Bluestem	6lbs/A
Plains Coreopsis	2lbs/A
Sand Dropseed	1lbs/A

**Four-winged Saltbush 5lbs/A

* This can be used around well pads and other areas where caliche cannot be removed.

*Pounds of pure live seed:

Pounds of seed x percent purity x percent germination = pounds pure live seed
(Insert Seed Mixture Here)

X. FINAL ABANDONMENT & REHABILITATION REQUIREMENTS

Upon abandonment of the well and/or when the access road is no longer in service the Authorized Officer shall issue instructions and/or orders for surface reclamation and restoration of all disturbed areas.

On private surface/federal mineral estate land the reclamation procedures on the road and well pad shall be accomplished in accordance with the private surface land owner agreement.