

OCD-ARTESIA

\$

ATS-08-736

UNITED STATES
DEPARTMENT OF THE INTERIOR
BUREAU OF LAND MANAGEMENT

945
JUL -3/2008

OCD-ARTESIA

FORM APPROVED
OMB No. 1004-0136
Expires January 31, 2004

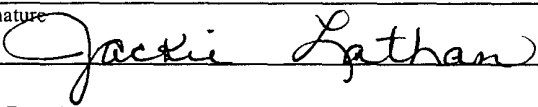
APPLICATION FOR PERMIT TO DRILL OR REENTER

1a. Type of Work <input checked="" type="checkbox"/> DRILL <input type="checkbox"/> REENTER		5. Lease Serial No NMLC 028731-b	
1b. Type of Well <input type="checkbox"/> Oil Well <input checked="" type="checkbox"/> Gas Well <input type="checkbox"/> Other <input type="checkbox"/> Single Zone <input type="checkbox"/> Multiple Zone		6. If Indian, Allottee or Tribe Name	
2. Name of Operator Mewbourne Oil Company - 14744		7. If Unit or CA Agreement, Name and No	
3a. Address PO Box 5270 Hobbs, NM 88241		8. Lease Name and Well No. Pacu 14 Fed Com #1	
3b. Phone No (include area code) 575-393-5905		9. API Well No. 30-015-36416	
4. Location of Well (Report location clearly and in accordance with any State requirements. *) At surface 800' FNL & 990' FWL Unit D At proposed prod. zone		10. Field and Pool, or Exploratory Grayburg Morrow	
14. Distance in miles and direction from nearest town or post office* 4 Miles NW of Loco Hills NM		11. Sec., T., R., M., or Blk. and Survey or Area Sec 14-T17S-R29E	
15. Distance from proposed* location to nearest property or lease line, ft. (Also to nearest drig. unit line, if any) 800'		12. County or Parish Eddy	
16. No. of Acres in lease 320		13. State NM	
17. Spacing Unit dedicated to this well 320			
18. Distance from proposed location* to nearest well, drilling, completed, applied for, on this lease, ft. Approx 300'		20. BLM/BIA Bond No. on file NM1693, Nationwide	
19. Proposed Depth 11000'		21. Elevations (Show whether DF, KDB, RT, GL, etc.) 3610' GL	
22. Approximate date work will start* ASAP		23. Estimated duration 45	

24. Attachments

The following, completed in accordance with the requirements of Onshore Oil and Gas Order No.1, shall be attached to this form:

- Well plat certified by a registered surveyor.
- A Drilling Plan.
- A Surface Use Plan (if the location is on National Forest System Lands, the SUPO shall be filed with the appropriate Forest Service Office).
- Bond to cover the operations unless covered by an existing bond on file (see Item 20 above).
- Operator certification.
- Such other site specific information and/or plans as may be required by the authorized officer.

25. Signature 		Name (Printed/Typed) Jackie Lathan	Date 05/29/08
Title Hobbs Regulatory			
Approved by (Signature) /S/ DAVID D. EVANS		Name (Printed/Typed) /S/ DAVID D. EVANS	Date JUL 01 2008
Title FIELD MANAGER		Office CARLSBAD FIELD OFFICE	

Application approval does not warrant or certify that the applicant holds legal or equitable title to those rights in the subject lease which would entitle the applicant to conduct operations thereon.

Conditions of approval, if any, are attached.

APPROVAL FOR TWO YEARS

Title 18 U.S.C. Section 1001 and Title 43 U.S.C. Section 1212, make it a crime for any person knowingly and willfully to make to any department or agency of the United States any false, fictitious or fraudulent statements or representations as to any matter within its jurisdiction.

*(Instructions on reverse)

Roswell Controlled Water Basin

**SEE ATTACHED FOR
CONDITIONS OF APPROVAL**

**NOTE: NEW PIT RULE
19-15-17 NMALC PART 17
A form C-144 must be approved
before starting drilling operations.**

**Approval Subject to General Requirements
& Special Stipulations Attached**

United States Department of the Interior
Bureau of Land Management
Roswell Field Office
2909 West Second Street
Roswell, New Mexico 88201-1287

Statement Accepting Responsibility for Operations

Operator Name: Mewbourne Oil Company
Street or Box: P.O. Box 5270
City, State: Hobbs, New Mexico
Zip Code: 88241

Mewbourne Oil Company of Hobbs, NM is a field office of Mewbourne Oil Company, 3901 S Broadway, Tyler TX 75701. **Mail connected to this APD should be directed to the Hobbs address.** The undersigned accepts all applicable terms, conditions, stipulations, and restrictions concerning operations conducted of the leased land or portion thereof, as described below.

Lease Number: Lease Number #NMLC028731-b

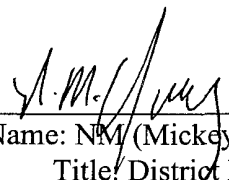
Legal Description of Land: Section 14, T-17S, R-29E Eddy County, New Mexico.
Location @ 800' FNL & 990' FWL.

Formation (if applicable): Morrow

Bond Coverage: \$150,000

BLM Bond File: NM1693, Nationwide

Authorized Signature: _____


Name: NM (Mickey) Young
Title: District Manager
Date: May 29, 2008

DISTRICT I
1625 N. French Dr., Hobbs, NM 88240

DISTRICT II
1301 W. Grand Avenue, Artesia, NM 88210

DISTRICT III
1000 Rio Brazos Rd., Aztec, NM 87410

DISTRICT IV
1220 S. St. Francis Dr., Santa Fe, NM 87505

State of New Mexico
Energy, Minerals and Natural Resources Department

Form C-102
Revised October 12, 2005

Submit to Appropriate District Office
State Lease - 4 Copies
Fee Lease - 3 Copies

OIL CONSERVATION DIVISION
1220 South St. Francis Dr.
Santa Fe, New Mexico 87505

☐ AMENDED REPORT

WELL LOCATION AND ACREAGE DEDICATION PLAT

API Number	Pool Code 77840	Pool Name Grayburg Morrow
Property Code 3 7252	Property Name PACU "14" FEDERAL COM	Well Number 1
OGRID No. 14744	Operator Name MEWBOURNE OIL COMPANY	Elevation 3611'

Surface Location

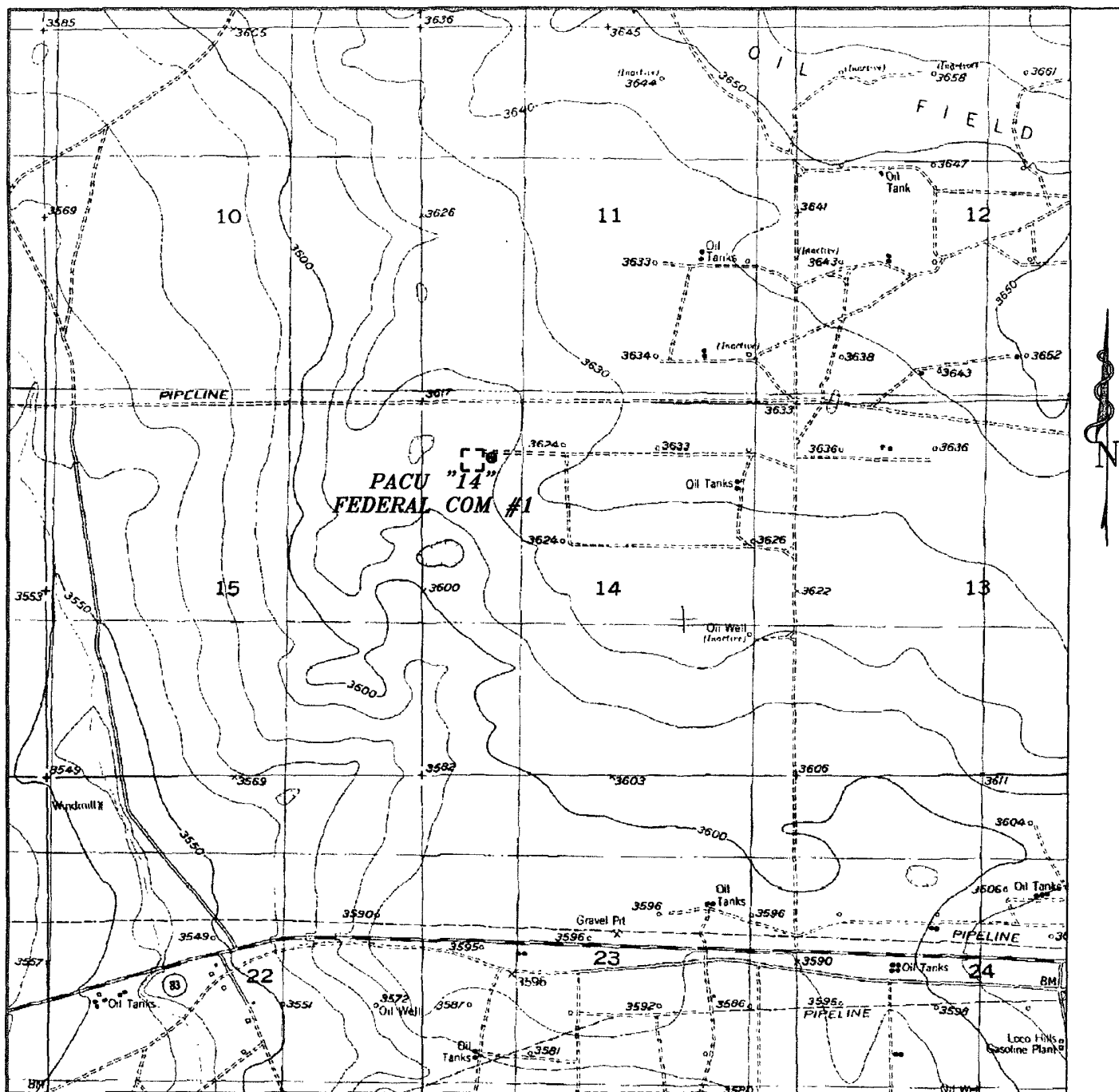
UL or lot No.	Section	Township	Range	Lot Idn	Feet from the	North/South line	Feet from the	East/West line	County
D	14	17 S	29 E		800	NORTH	990	WEST	EDDY

Bottom Hole Location If Different From Surface

UL or lot No.	Section	Township	Range	Lot Idn	Feet from the	North/South line	Feet from the	East/West line	County
Dedicated Acres 320	Joint or Infill	Consolidation Code	Order No.						

NO ALLOWABLE WILL BE ASSIGNED TO THIS COMPLETION UNTIL ALL INTERESTS HAVE BEEN CONSOLIDATED
OR A NON-STANDARD UNIT HAS BEEN APPROVED BY THE DIVISION

	<p>OPERATOR CERTIFICATION</p> <p>I hereby certify that the information contained herein is true and complete to the best of my knowledge and belief, and that this organization either owns a working interest or unleased mineral interest in the land including the proposed bottom hole location pursuant to a contract with an owner of such a mineral or working interest, or to a voluntary pooling agreement or a compulsory pooling order heretofore entered by the division.</p> <p>Jackie Lathan 5/29/08 Signature Date</p> <p>Jackie Lathan Printed Name</p>
	<p>SURVEYOR CERTIFICATION</p> <p>I hereby certify that the well location shown on this plat was plotted from field notes of actual surveys made by me or under my supervision, and that the same is true and correct to the best of my belief.</p> <p>MAY 7 2008</p> <p>Date Surveyed</p> <p>Signature of Surveyor</p> <p>Professional Surveyor</p> <p>7977</p> <p>Certificate No. Gary L. Jones 7977</p> <p>BASIN SURVEYS</p>



PACU "14" FEDERAL COM #1
 Located 800' FNL and 990' FWL
 Section 14, Township 17 South, Range 29 East,
 N.M.P.M., Eddy County, New Mexico.

Exhibit 3A

basin
surveys
 focused on excellence
 in the oilfield

P.O. Box 1786
 1120 N. West County Rd.
 Hobbs, New Mexico 88241
 (505) 393-7316 - Office
 (505) 392-3074 - Fax
 basinsurveys.com

W.O. Number. 19686 JMS
 Survey Date. 05-07-2008
 Scale. 1" = 2000'
 Date. 05-08-2008

MEWBOURNE
OIL CO.

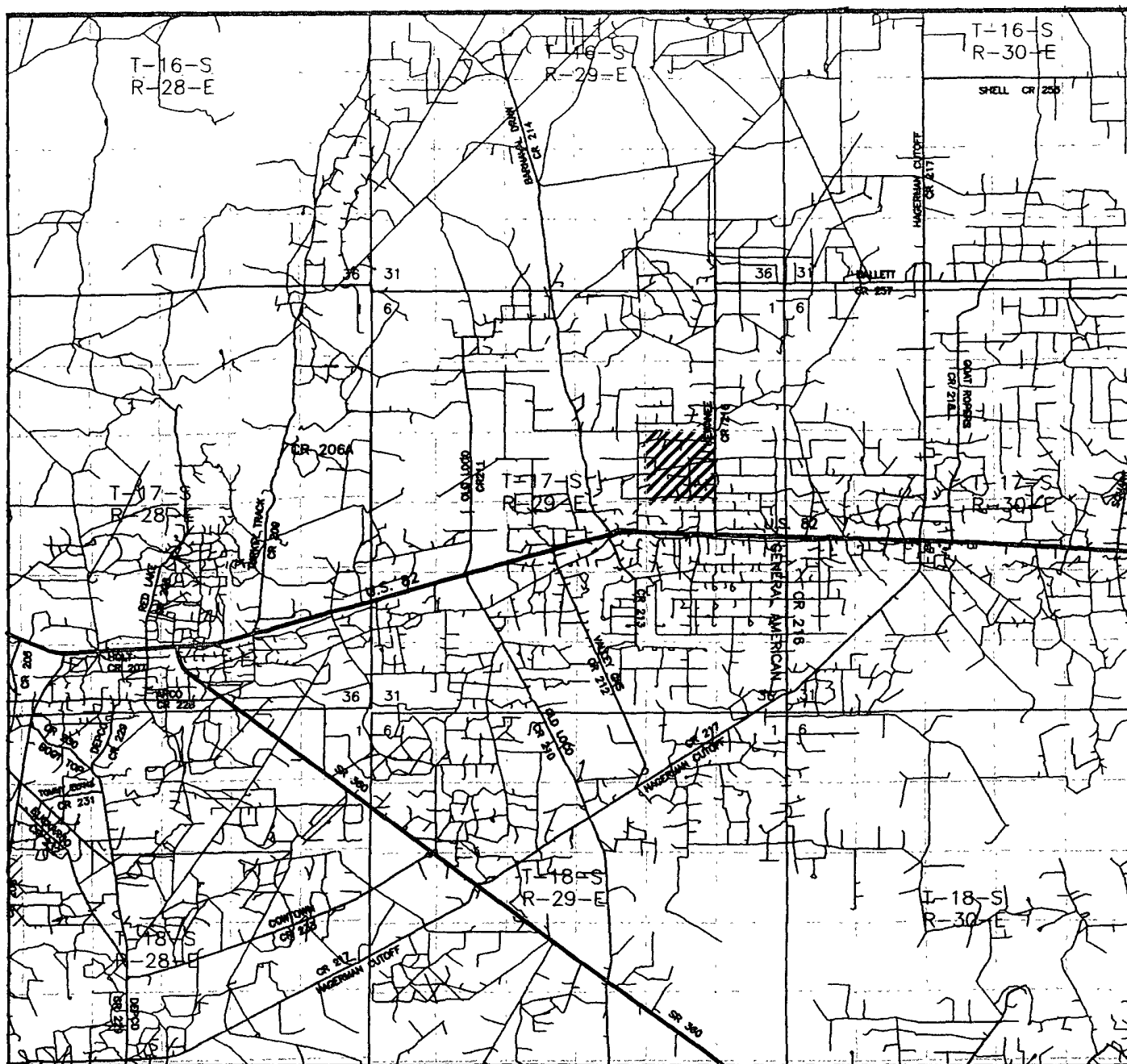


Exhibit 3

PACU "14" FEDERAL COM #1
 Located 800' FNL and 990' FWL
 Section 14, Township 17 South, Range 29 East,
 N.M.P.M., Eddy County, New Mexico.

basin
surveys
 focused on excellence
 in the oilfield

P.O. Box 1786
 1120 N. West County Rd.
 Hobbs, New Mexico 88241
 (505) 393-7316 - Office
 (505) 392-3074 - Fax
 basinsurveys.com

W.O. Number: 19686 JMS
 Survey Date: 05-07-2008
 Scale: 1" = 2 MILES
 Date: 05-09-2006

MEWBOURNE
OIL CO.

Drilling Program
Mewbourne Oil Company
Pacu 14 Federal Com #1
800' FNL & 990' FWL
Sec 14-T17S-R29E
Eddy County, New Mexico

1. The estimated top of geological markers are as follows:

*Yates	1017'	*Atoka	10284'
*Grayburg	2281'	*Morrow	10456'
*Wolfcamp	7416'	Barnett	10832'
*Strawn	10000'		

2. Estimated depths of anticipated fresh water, oil, or gas:

Water	.Fresh water will be protected by setting surface casing at 350' and cemented to surface.
Hydrocarbons	Oil and Gas are anticipated in the above (*) formations. These zones will be protected by casing and cementing as necessary.

3. Pressure control equipment:

A 2000# working pressure annular BOP will be installed on the 13 3/8" surface casing. A 5000# WP Double Ram BOP and 5000# WP Annular will be installed after running 9 5/8" casing. Pressure tests will be conducted prior to drilling out under all casing strings. BOP controls will be installed prior to drilling under surface casing and will remain in use until completion of drilling operations. BOP's will be inspected and operated as recommended in Onshore Order #2 A Kelly cock and a sub equipped with a full opening valve sized to fit the drill pipe and collars will be available on the rig floor in the open position when the Kelly is not in used. MOC would like to waive the low pressure test on the 13 3/8" BOPE stack and test with rig pump to 70% of burst rate. Will test the 9 5/8" BOPE to 5000# and Annular to 2500# with a third party testing company before drilling below 9 5/8" shoe, but will test again, if needed, in 30 days from the 1st test as per BLM Onshore Oil and Gas Order #2.

see
COA →

4. Proposed casing and cementing program:

A. Casing Program:

<u>Hole Size</u>	<u>Casing</u>	<u>Wt/Ft.</u>	<u>Grade</u>	<u>Depth</u>	<u>Jt Type</u>
17 1/2"	13 3/8" (new)	48#	H40	0-350'	ST&C
12 1/4"	9 5/8" (new)	40#	N80	0-120'	LT&C
12 1/4"	9 5/8" (new)	40#	J55	120'-3000'	LT&C
8 3/4"	5 1/2" (new)	17#	HCP110	0-400'	LT&C
8 3/4"	5 1/2" (new)	17#	N80	400'-10000'	LT&C
8 3/4"	5 1/2" (new)	17#	HCP110	10000'-11000'	LT&C

Minimum casing design factors: Collapse 1.125, Burst 1.0, Tensile strength 1.8.

B. Cementing Program:

- i. Surface Casing: 350 sacks Class H cement containing 1/4#/sk cellophane flakes, 10#/sk LCM1. Yield at 1.52 cuft/sk. 400 sks Class C cement containing 2% CaC2. Yield at 1.34 cuft/sk. Cmt circulated to surface.
- ii. Intermediate Casing: 800 sacks Class C light cement with additives. Yield at 1.96 cuft/sk 400 sacks Class C cement containing 1% CaCl. Yield at 1.34 cuft/sk Cmt circulated to surface.
- SEE COA iii. Production Casing: 425 sacks Class H cement with additives. Yield at 1.95 cuft/sk. ~~Cmt top to be 500' above Wolfcamp~~ Shallower productive zones may be protected by utilizing a multiple stage cementing tool in the production casing below potentially productive zones and cementing with a light cement slurry.

**Mewbourne Oil Company reserves the right to change cement designs as hole conditions may warrant.*

5. Mud Program:

Interval	Type System	Weight	Viscosity	Fluid Loss
0'-350'	FW spud mud	8.6-9.4	32-34	NA
350'-3000'	Brine water	10.0-10.2	28-30	NA
3000'-TD	Cut Brine water	9.5-10.0	30-35	6-10 WL

(Note: Any Weight Above 8.6#/gallon would be to hold back Wolfcamp shale, rather than abnormal BHP.)

6. Evaluation Program:

This well is planned to be a directional well per exhibit #7

Samples: 10' samples from intermediate casing to TD
Logging: Compensated density and dual laterlog from intermediate casing to TD. Gamma Ray Newtron to surface.
Coring: As needed for evaluation
Drill Stem Tests: As needed for evaluation

7. Downhole Conditions

Zones of abnormal pressure: None anticipated
Zones of lost circulation: Anticipated in surface and intermediate holes
Maximum bottom hole temperature: 150 degree F
Maximum bottom hole pressure: 8.6 lbs/gal gradient or less

8. Anticipated Starting Date:

Mewbourne Oil Company intends to drill this well as soon as possible after receiving approval with approximately 45 days involved in drilling operations and an additional 10 days involved in completion operations on the project.

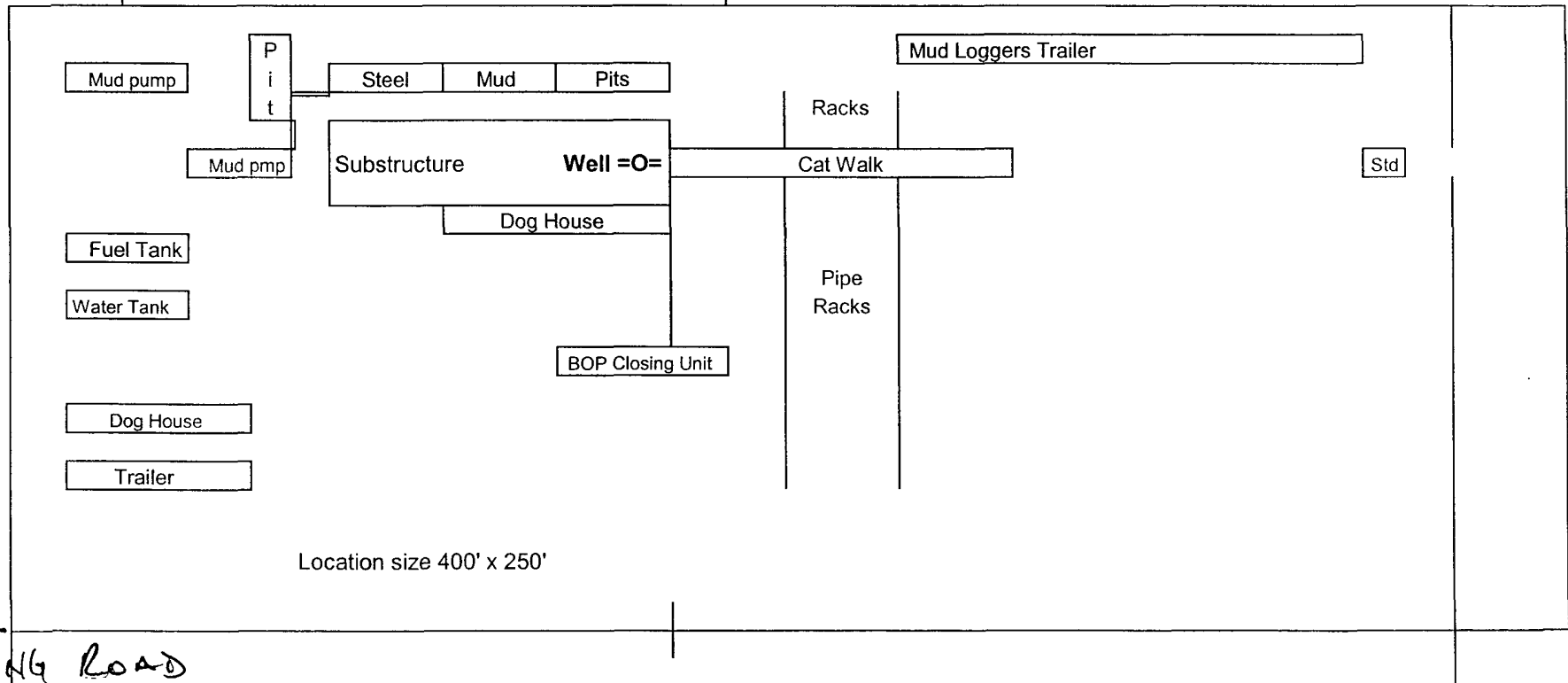
Mewbourne Oil Company

Exhibit #5

Well Name Pacu 14 Fed Com #1
Footages 800' FNL & 990' FWL
STR Sec 14-T17S-R29E
County Eddy, County
State New Mexico

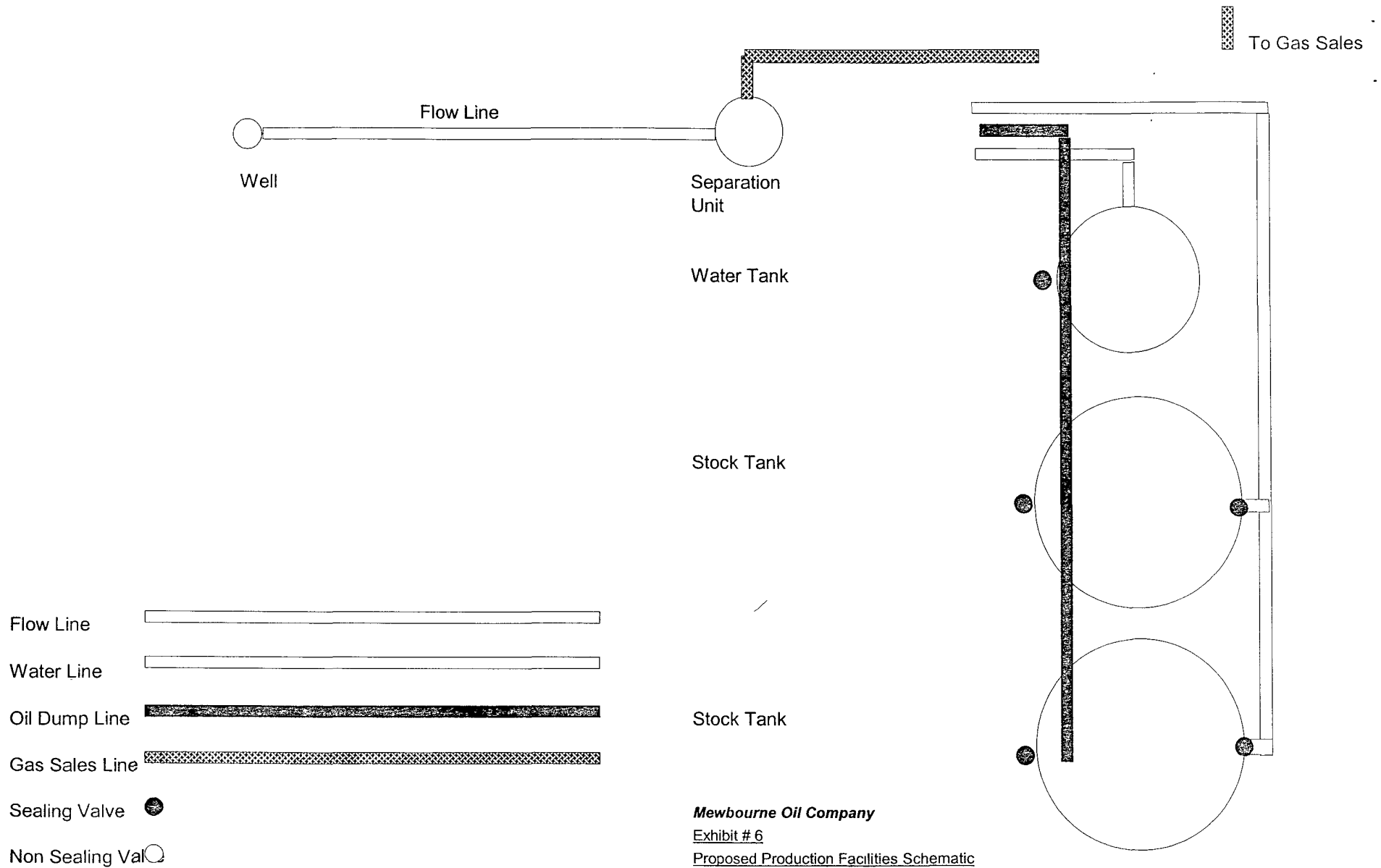


Reserve Pit
100 x 100'



Rig Location Schematic

Proposed Production Facilities Schematic



Mewbourne Oil Company

Exhibit # 6

Proposed Production Facilities Schematic

Pacu 14 Federal Com #1
800' FNL & 990' FWL
Sec 14-T17S-R29E
Eddy, County
New Mexico

Notes Regarding Blowout Preventer

Mewbourne Oil Company

Pacu 14 Federal Com #1

800' FNL & 990' FWL

Sec 14-T17S-R29E

Eddy County, New Mexico

- I. Drilling nipple (bell nipple) to be constructed so that it can be removed without the use of a welder through the opening of the rotary table, with minimum internal diameter equal to blowout preventer bore.
- II. Blowout preventer and all fittings must be in good condition with a minimum 2000 psi working pressure on 13 $\frac{3}{8}$ " casing and 5000 psi working pressure on 9 $\frac{5}{8}$ " casing.
- III. Safety valve must be available on the rig floor at all times with proper connections to install in the drill string. Valve must be full bore with minimum 5000 psi working pressure.
- IV. Equipment through which bit must pass shall be at least as large as internal diameter of the casing.
- V. A kelly cock shall be installed on the kelly at all times.

Blowout preventer closing equipment to include and accumulator of at least 40 gallon capacity, two independent sources of pressure on closing unit, and meet all other API specifications.

Mewbourne Oil Company
BOP Schematic for
12 1/4" Hole

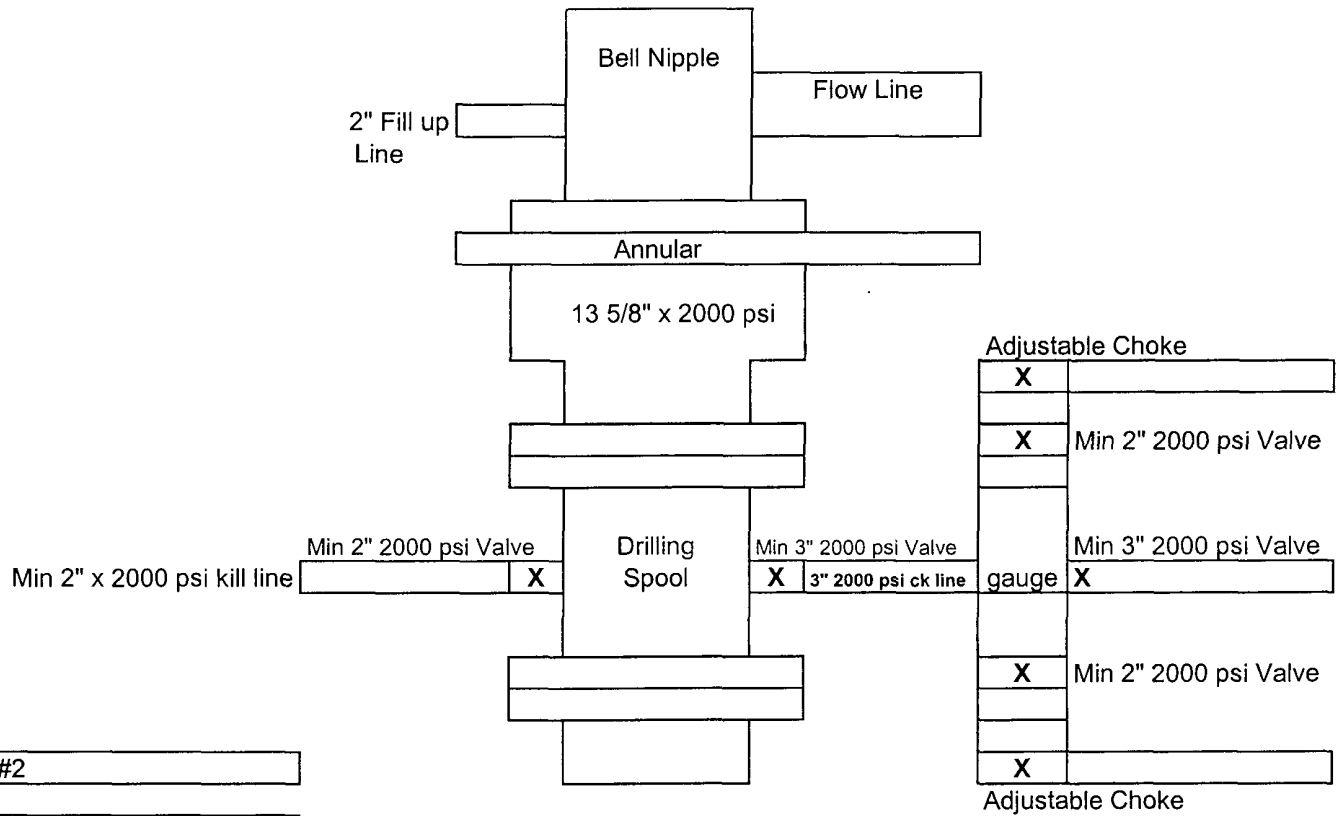


Exhibit #2

Pacu 14 Federal Com #1
800' FNL & 990' FWL
Sec 14-T17S-R29E
Eddy, County
New Mexico

Mewbourne Oil Company
BOP Schematic for
8 3/4" or 7 7/8" Hole

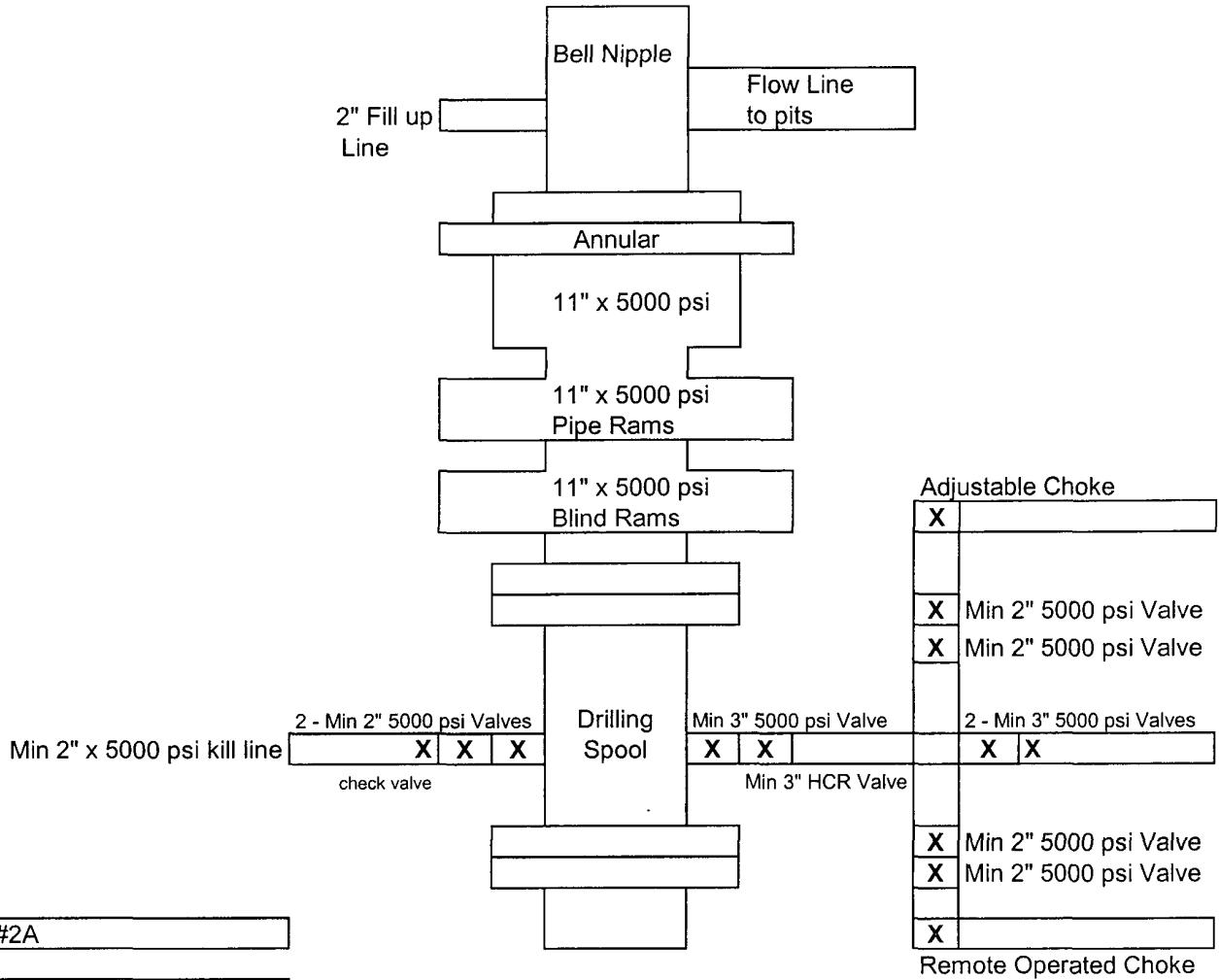


Exhibit #2A

Pacu 14 Federal Com #1
800' FNL & 990' FWL
Sec 14-T17S-R29E
Eddy, County
New Mexico

Hydrogen Sulfide Drilling Operations Plan

Mewbourne Oil Company

Pacu 14 Federal Com #1

800' FNL & 990' FWL

Sec 14-T17S-R29E

Eddy County, New Mexico

1. General Requirements

Rule 118 does not apply to this well because MOC has researched this area and no high concentrations of H₂S were found. MOC will have on location and working all H₂S safety equipment before the Yates formation for purposes of safety and insurance requirements.

2. Hydrogen Sulfide Training

All personnel, whether regularly assigned, contracted, or employed on an unscheduled basis, will have received training from a qualified instructor in the following areas prior to entering the drilling pad area of the well:

1. The hazards and characteristics of hydrogen sulfide gas.
2. The proper use of personal protective equipment and life support systems.
3. The proper use of hydrogen sulfide detectors, alarms, warning systems, briefing areas, evacuation procedures.
4. The proper techniques for first aid and rescue operations.

Additionally, supervisory personnel will be trained in the following areas:

- 1 The effects of hydrogen sulfide on metal components. If high tensile tubular systems are utilized, supervisory personnel will be trained in their special maintenance requirements.
- 2 Corrective action and shut in procedures, blowout prevention, and well control procedures while drilling a well.
- 3 The contents of the Hydrogen Sulfide Drilling Operations Plan.

There will be an initial training session prior to encountering a known hydrogen sulfide source. The initial training session shall include a review of the site specific Hydrogen Sulfide Drilling Operations Plan.

3. Hydrogen Sulfide Safety Equipment and Systems

All hydrogen sulfide safety equipment and systems will be installed, tested, and operational prior to drilling below the intermediate casing.

1. Well Control Equipment
 - A. Flare line with automatic igniter or continuous ignition source.
 - B. Choke manifold with minimum of one adjustable choke.
 - C. Blowout preventers equipped with blind rams and pipe rams to accommodate all pipe sizes with properly sized closing unit
 - D. Auxiliary equipment including rotating head and annular type blowout preventer.
2. Protective Equipment for Essential Personnel

Thirty minute self contained work unit located at briefing area as indicated on wellsite diagram.

3. Hydrogen Sulfide Protection and Monitoring Equipment

Two portable hydrogen sulfide monitors positioned on location for optimum coverage and detection. The units shall have audible sirens to notify personnel when hydrogen sulfide levels exceed 20 PPM.

4. Visual Warning Systems

A. Wind direction indicators as indicated on the wellsite diagram.

B. Caution signs shall be posted on roads providing access to location. Signs shall be painted a high visibility color with lettering of sufficient size to be readable at reasonable distances from potentially contaminated areas.

4. **Mud Program**

The mud program has been designed to minimize the amount of hydrogen sulfide entrained in the mud system. Proper mud weight, safe drilling practices, and the use of hydrogen sulfide scavengers will minimize hazards while drilling the well.

5. **Metallurgy**

All tubular systems, wellheads, blowout preventers, drilling spools, kill lines, choke manifolds, and valves shall be suitable for service in a hydrogen sulfide environment when chemically treated.

6. **Communications**

State & County Officials phone numbers are posted on rig floor and supervisors trailer. Communications in company vehicles and toolpushers are either two way radios or cellular phones.

7. **Well Testing**

Drill stem testing is not an anticipated requirement for evaluation of this well. A drill stem test is required, it will be conducted with a minimum number of personnel in the immediate vicinity. The test will be conducted during daylight hours only.

8. **Emergency Phone Numbers**

Eddy County Sheriff's Office		575-746-9888
Ambulance Service		911 or 575-746-5051
Artesia Fire Dept		911 or 575-746-5051
Loco Hills Volunteer Fire Dept.		911 or 575-677-3266
Closest Medical Facility	Artesia General Hospital	575-748-3333
Mewbourne Oil Company	Hobbs District Office	575-393-5905
	Fax	575-397-6252
	2nd Fax	575-393-7259
District Manager	Micky Young	575-390-0999
Drilling Superintendent	Frosty Lathan	575-390-4103
Drilling Foreman	Wesley Noseff	575-441-0729

Exhibit #4
Status of Wells in Immediate Vicinity
Mewbourne Oil Company
Pacu14 Federal Com #1
800' FNL & 990' FWL
Sec 14-T17S-R29E
Eddy County, New Mexico

Section 14-T17S-R29E

Operator: Marbob Energy Corp
Well Name: Dodd Federal Unit #28
Unit letter: Unit B
Status: Flowing
Field: Grayburg Jackson

Section 14-17S-R29E

Operator: Marbob Energy Corp
Well Name: Dodd Federal Unit #29
Unit letter: A
Status: Pumping
Field: Grayburg Jackson

Section 14-T17S-R29E

Operator: Marbob Energy Corp
Well Name: Dodd Federal Unit #114
Unit Letter D
Status: Pumping
Field: Grayburg Jackson

MULTI-POINT SURFACE USE AND OPERATIONS PLAN

MEWBORNE OIL COMPANY

Pacu 14 Federal Com #1

800' FNL & 990' FWL

Sec 14-T17S-R29E

Eddy County, New Mexico

This plan is submitted with Form 3160-3, Application for Permit to Drill, Covering the above described well. The purpose of this plan is to describe the location of the proposed well, the proposed construction activities and operations plan, the magnitude of the surface disturbance involved, and the procedures to be followed in restoring the surface so that a complete appraisal can be made of the environmental impact associated with the proposed operations.

1. Existing Roads:

- A. Exhibit #3 is a road map showing the location of the proposed well. Existing roads are highlighted in black and proposed road is highlighted in blue. Exhibit #3A is a topographic map showing the location of the proposed well and access road. Existing and proposed roads are highlighted in black.
- B. **Directions to location from Loco Hills: West on US 82, 3 miles. Turn right (North) on Eddy Co 215. Continue North 1.3 miles. Turn left (west) & continue west 0.8 miles to location.**

2. Proposed Access Road:

- A. No new road will be needed.
- B. The access to the location will be limited to 16' in width and will adequately drain runoff and control erosion as presently constructed.

3. Location of Existing Wells:

There are producing wells within the immediate vicinity of the well site. Exhibit #4 shows the proposed well and existing wells within a one mile radius.

4. Location of Existing and/or Proposed Facilities:

- A. There are no production facilities on this lease at the present time.
- B. In the event that the well is productive, production facilities will be located on the well pad.
- C. All production vessels left on location will be painted to conform with BLM painting stipulations within 180 days of installation.

5. Location and Type of Water Supply

The well will be drilled with a combination of fresh water and brine water based mud systems. The water will be obtained from commercial suppliers in the area and/or hauled to the location by transport trucks over existing and proposed roads as indicated in Exhibit #3.

6. Source of Construction Materials

All material required for construction of the drill pad and access roads will be obtained from private, state, or federal pits. The construction contractor will be solely responsible for securing construction materials required for this operation and paying any royalties that may be required on those materials.

7. Methods of Handling Waste Disposal:

- A. Drill cuttings not retained for evaluation purposed will be disposed of in the reserve pit.
- B. Drilling fluids will be allowed to evaporate in the reserve pit prior to closure.
- C. Water produced during operations will be disposed of in the reserve pit.
- D. If any liquid hydrocarbons are produced during operations, those liquids will be stored in suitable tanks until sold.
- E. Current regulations regarding the proper disposal of human waste will be followed.
- F. All trash, junk, and other waste materials will be stored in proper containers to prevent dispersal and will be removed to an appropriate facility within one week of cessation of drilling and completion activities.

8. Ancillary Facilities

There are no ancillary facilities within the immediate vicinity of the proposed well site.

9. Well Site Layout

- A. A diagram of the drill pad is shown in Exhibit #5. Dimensions of the pad, pits, and location of major rig components are shown.
- B. The reserve pit will be lined with a high quality plastic sheeting to prevent migration of fluids.
- C. The pad dimension of 400' x 250' has been staked and flagged.
- D. An archaeological survey is in the process of being conducted on the proposed location pad.

10. Plans for Restoration of Surface

- A. Upon cessation of the proposed operations, if the well is abandoned, the location and road will be ripped and re-seeded. The reserve pit area, after allowing to dry will be leveled. The entire location will be restored to the original contour as much as reasonable possible. All trash, garbage, and pit lining will be hauled to appropriate disposal to assure the location is aesthetically pleasing as reasonable possible. All restoration work will be completed within 180 days of cessation of activities.
- B. The disturbed area will be restored by re-seeding during the proper growing season.
- C. Three sides of the reserve pit will be fenced prior to and during drilling operations. The reserve pit will be fenced on the fourth side after the drilling rig is removed to prevent the endangerment of livestock. The fence will remain in place until the pit area has been leveled and restored.

- D. Upon cessation of the proposed operations, if the well is not abandoned, the reserve pit area will be restored as per OCD guidelines. Any additional caliche required for production facilities will be obtained from a source as described in Section 6.
- E. Within 90 days of cessation of drilling and completion operations, all equipment not necessary for production operations will be removed. The location will be cleaned of all trash and junk to assure the well site is left as aesthetically pleasing as reasonably possible.

11. Surface Ownership:

The surface is owned by: Located entirely on federal surface.

12. Other Information:

- A. Topography: Refer to the archaeological report for a detailed description of flora, fauna, soil characteristics, dwellings, and historical or cultural sites.
- B. The primary use of the surface at the location is for grazing of livestock.

13. Operator's Representative:

- A. Through APD approval, drilling, completion and production operations:

N.M. Young, District Manager
Mewbourne Oil Company
PO Box 5270
Hobbs, NM 88241
575-393-5905

Mewbourne Oil Company

PO Box 5270
Hobbs, NM 88241
(575) 393-5905

I hereby certify that I, or persons under my direct supervision, have inspected the proposed drill site and access route for the Pacu 14 Federal Com #1, 800' FNL & 990' FWL of Sec 14-T17S- R29E, Eddy County, New Mexico; that I am familiar with the conditions which currently exist; that the statements made in this plan are to the best of my knowledge, true and correct; and the work associated with the operations proposed herein will be performed by Mewbourne Oil Company, its contractors and subcontractors, in accordance with this plan and the terms and conditions under which it is approved. This statement is subject to the provisions of 18 U.S.C. 1001 for the filing of a false statement.

Signature: _____



Date: 5/29/08

Print: NM Young

Hobbs District Manager

PECOS DISTRICT CONDITIONS OF APPROVAL

OPERATOR'S NAME:	MEWBOURNE OIL COMPANY
LEASE NO.:	LC028731B
WELL NAME & NO.:	Pacu 14 Fed Com #1
SURFACE HOLE FOOTAGE:	800' FNL & 990' FWL
BOTTOM HOLE FOOTAGE	
LOCATION:	Section 14, T. 17 S., R 29 E., NMPM
COUNTY:	Eddy County, New Mexico

TABLE OF CONTENTS

Standard Conditions of Approval (COA) apply to this APD. If any deviations to these standards exist or special COAs are required, the section with the deviation or requirement will be checked below.

- ☐ **General Provisions**
- ☐ **Permit Expiration**
- ☐ **Archaeology, Paleontology, and Historical Sites**
- ☐ **Noxious Weeds**
- ☐ **Special Requirements**
- ☐ **Construction**
 - Notification
 - Topsoil
 - Reserve Pit
 - Federal Mineral Material Pits
 - Well Pads
 - Roads
- ☐ **Road Section Diagram**
- ☒ **Drilling**
- ☐ **Production (Post Drilling)**
 - Well Structures & Facilities
- ☐ **Reserve Pit Closure/Interim Reclamation**
- ☐ **Final Abandonment/Reclamation**

I. GENERAL PROVISIONS

The approval of the Application For Permit To Drill (APD) is in compliance with all applicable laws and regulations: 43 Code of Federal Regulations 3160, the lease terms, Onshore Oil and Gas Orders, Notices To Lessees, New Mexico Oil Conservation Division (NMOCD) Rules, National Historical Preservation Act As Amended, and instructions and orders of the Authorized Officer. Any request for a variance shall be submitted to the Authorized Officer on Form 3160-5, Sundry Notices and Report on Wells.

II. PERMIT EXPIRATION

If the permit terminates prior to drilling and drilling cannot be commenced within 60 days after expiration, an operator is required to submit Form 3160-5, Sundry Notices and Reports on Wells, requesting surface reclamation requirements for any surface disturbance. However, if the operator will be able to initiate drilling within 60 days after the expiration of the permit, the operator must have set the conductor pipe in order to allow for an extension of 60 days beyond the expiration date of the APD. (Filing of a Sundry Notice is required for this 60 day extension.)

III. ARCHAEOLOGICAL, PALEONTOLOGY & HISTORICAL SITES

Any cultural and/or paleontological resource discovered by the operator or by any person working on the operator's behalf shall immediately report such findings to the Authorized Officer. The operator is fully accountable for the actions of their contractors and subcontractors. The operator shall suspend all operations in the immediate area of such discovery until written authorization to proceed is issued by the Authorized Officer. An evaluation of the discovery shall be made by the Authorized Officer to determine the appropriate actions that shall be required to prevent the loss of significant cultural or scientific values of the discovery. The operator shall be held responsible for the cost of the proper mitigation measures that the Authorized Officer assesses after consultation with the operator on the evaluation and decisions of the discovery. Any unauthorized collection or disturbance of cultural or paleontological resources may result in a shutdown order by the Authorized Officer.

IV. NOXIOUS WEEDS

The operator shall be held responsible if noxious weeds become established within the areas of operations. Weed control shall be required on the disturbed land where noxious weeds exist, which includes the roads, pads, associated pipeline corridor, and adjacent land affected by the establishment of weeds due to this action. The operator shall consult with the Authorized Officer for acceptable weed control methods, which include following EPA and BLM requirements and policies.

CONSTRUCTION

A. NOTIFICATION

The BLM shall administer compliance and monitor construction of the access road and well pad. Notify the Carlsbad Field Office at (575) 234-5972 at least 3 working days prior to commencing construction of the access road and/or well pad.

When construction operations are being conducted on this well, the operator shall have the approved APD and Conditions of Approval (COA) on the well site and they shall be made available upon request by the Authorized Officer.

B. TOPSOIL

The operator shall stockpile the topsoil of the well pad. The topsoil to be stripped is approximately 6 inches in depth. The topsoil shall not be used to backfill the reserve pit and will be used for interim and final reclamation.

C. RESERVE PITS

The reserve pit shall be constructed and closed in accordance with the NMOCD rules.

The reserve pit shall be constructed 100' X 100' on the East side of the well pad.

The reserve pit shall be constructed, so that upon completion of drilling operations, the dried pit contents shall be buried a minimum depth of three feet below ground level. Should the pit content level not meet the three foot minimum depth requirement, the excess contents shall be removed until the required minimum depth of three feet below ground level has been met. The operator shall properly dispose of the excess contents at an authorized disposal site.

The reserve pit shall be constructed and maintained so that runoff water from outside the location is not allowed to enter the pit. The berms surrounding the entire perimeter of the pit shall extend a minimum of two (2) feet above ground level. At no time will standing fluids in the pit be allowed to rise above ground level.

The reserve pit shall be fenced on three (3) sides during drilling operations. The fourth side shall be fenced immediately upon rig release.

D. FEDERAL MINERAL MATERIALS PIT

If the operator elects to surface the access road and/or well pad, mineral materials extracted during construction of the reserve pit may be used for surfacing the well pad and access road and other facilities on the lease.

Payment shall be made to the BLM prior to removal of any additional federal mineral materials from any site other than the reserve pit. Call the Carlsbad Field Office at (575) 234-5972.

E. WELL PAD SURFACING

Surfacing of the well pad is not required.

If the operator elects to surface the well pad, the surfacing material may be required to be removed at the time of reclamation.

The well pad shall be constructed in a manner which creates the smallest possible surface disturbance, consistent with safety and operational needs.

V. DRILLING

A. DRILLING OPERATIONS REQUIREMENTS

The BLM is to be notified a minimum of 4 hours in advance for a representative to witness:

- a. Spudding well
- b. Setting and/or Cementing of all casing strings
- c. BOPE tests

☒ Eddy County

Call the Carlsbad Field Office, 620 East Greene St., Carlsbad, NM 88220,
(575) 361-2822

1. **Although Hydrogen Sulfide has not been reported in this section, it is always a possible hazard. It has been reported in adjacent sections. It is recommended that monitoring equipment be onsite for potential Hydrogen Sulfide. If Hydrogen Sulfide is encountered, please report measured amounts and formations to the BLM.**
2. Unless the production casing has been run and cemented or the well has been properly plugged, the drilling rig shall not be removed from over the hole without prior approval.
3. Floor controls are required for 3M or Greater systems. These controls will be on the rig floor, unobstructed, readily accessible to the driller and will be operational at all times during drilling and/or completion activities. Rig floor is defined as the area immediately around the rotary table; the area immediately above the substructure on which the draw works are located, this does not include the dog house or stairway area.

B. CASING

Changes to the approved APD casing and cement program require submitting a sundry and receiving approval prior to work. Failure to obtain approval prior to work will result in an Incident of Non-Compliance being issued.

Centralizers required on surface casing per Onshore Order 2.III.B.1.f.

Provide compressive strengths including hours to reach required 500 pounds compressive strength prior to cementing each casing string.

No pea gravel permitted for remedial or fall back remedial without prior authorization from the BLM engineer.

Possible lost circulation in the Grayburg & San Andres

Possible H₂O flows in the Salado & Artesia Group

Potential of high pressure in the Wolfcamp, Atoka & Morrow

1. The 13-3/8 inch surface casing shall be set at approximately 350 feet (a minimum of 25 feet into the Rustler Anhydrite and above the salt) and cemented to the surface.
 - a. If cement does not circulate to the surface, the appropriate BLM office shall be notified and a temperature survey utilizing an electronic type temperature survey with a surface log readout will be used or a cement bond log shall be run to verify the top of the cement.
 - b. Wait on cement (WOC) time for a primary cement job will be a minimum 18 hours for a water basin, 24 hours in the potash area, or 500 pounds compressive strength, whichever is greater. (This is to include the lead cement).
 - c. Wait on cement (WOC) time for a remedial job will be a minimum of 4 hours after bringing cement to surface or 500 pounds compressive strength, whichever is greater.
 - d. If cement falls back, remedial cementing will be done prior to drilling out that string.
2. The minimum required fill of cement behind the 9-5/8 inch intermediate casing is:
☒ Cement to surface. If cement does not circulate see B.1.a-d above.
3. The minimum required fill of cement behind the 5-1/2 inch production casing is:
☒ Cement should tie-back at least **200** feet into previous casing string.
Operator shall provide method of verification. Additional cement will be required to bring TOC 200 feet into the 9-5/8 inch intermediate casing.
4. If hardband drill pipe is rotated inside casing, returns will be monitored for metal. If metal is found in samples, drill pipe will be pulled and rubber protectors which have a larger diameter than the tool joints of the drill pipe will be installed prior to continuing drilling operations.

C. PRESSURE CONTROL

1. All blowout preventer (BOP) and related equipment (BOPE) shall comply with well control requirements as described in Onshore Oil and Gas Order No. 2 and API RP 53 Sec. 17.
2. The appropriate BLM office shall be notified a minimum of 4 hours in advance for a representative to witness the tests.
 - a. The tests shall be done by an independent service company.
 - b. The results of the test shall be reported to the appropriate BLM office.
 - c. All tests are required to be recorded on a calibrated test chart. A copy of the BOP/BOPE test chart and a copy of independent service company test will be submitted to the appropriate BLM office.
 - d. The BOP/BOPE test shall include a low pressure test from 250 to 300 psi. The test will be held for a minimum of 10 minutes if test is done with a test plug and 30 minutes without a test plug.
 - e. BOP/BOPE must be tested by an independent service company within 500 feet of the top of the **Wolfcamp** formation if the time between the setting of the intermediate casing and reaching this depth exceeds 20 days. This test does not exclude the test prior to drilling out the casing shoe as per Onshore Order No. 2.
 - f. A variance to test the surface casing and BOP/BOPE (**entire system**) to the reduced pressure of **1000** psi with the rig pumps is approved. **Low pressure test waiver not approved.**

D. DRILLING MUD

Mud system monitoring equipment, with derrick floor indicators and visual and audio alarms, shall be operating before drilling into the **Wolfcamp** formation, and shall be used until production casing is run and cemented.

E. DRILL STEM TEST

If drill stem tests are performed, Onshore Order 2.III.D shall be followed.

LB 6/26/08

VI. PRODUCTION (POST DRILLING)

A. WELL STRUCTURES & FACILITIES

Placement of Production Facilities

Production facilities should be placed on the well pad to allow for maximum interim recontouring and revegetation of the well location.

Containment Structures

The containment structure shall be constructed to hold the capacity of the entire contents of the largest tank, plus 24 hour production, unless more stringent protective requirements are deemed necessary by the Authorized Officer.

Painting Requirement

All above-ground structures including meter housing that are not subject to safety requirements shall be painted a flat non-reflective paint color
Shale Green, Munsell Soil Color Chart # 5Y 4/2

VII. INTERIM RECLAMATION & RESERVE PIT CLOSURE

A. INTERIM RECLAMATION

If the well is a producer, interim reclamation shall be conducted on the well site in accordance with the orders of the Authorized Officer. The operator shall submit a Sundry Notices and Reports on Wells (Notice of Intent), Form 3160-5, prior to conducting interim reclamation.

During the life of the development, all disturbed areas not needed for active support of production operations should undergo interim reclamation in order to minimize the environmental impacts of development on other resources and uses.

At the time reserve pits are to be reclaimed, operators should work with BLM surface management specialists to devise the best strategies to reduce the size of the location. Any reductions should allow for remedial well operations, as well as safe and efficient removal of oil and gas.

During reclamation, the removal of caliche is important to increasing the success of revegetating the site. Removed caliche may be used for road repairs, fire walls or for building other roads and locations. In order to operate the well or complete workover operations, it may be necessary to drive, park and operate on restored interim vegetation within the previously disturbed area. Disturbing revegetated areas for production or workover operations will be allowed. If there is significant disturbance and loss of vegetation, the area will need to be revegetated. Communicate with the appropriate BLM office for any exceptions/exemptions if needed.

B. RESERVE PIT CLOSURE

The reserve pit, when dried and closed, shall be recontoured, all trash removed, and reseeded as follows:

Seed Mixture 4, for Gypsum Sites

The holder shall seed all disturbed areas with the seed mixture listed below. The seed mixture shall be planted in the amounts specified in pounds of pure live seed (PLS)* per acre. There shall be no primary or secondary noxious weeds in the seed mixture. Seed will be tested and the viability testing of seed will be done in accordance with State law(s) and within nine (9) months prior to purchase. Commercial seed will be either certified or registered seed. The seed container will be tagged in accordance with State law(s) and available for inspection by the authorized officer.

Seed will be planted using a drill equipped with a depth regulator to ensure proper depth of planting where drilling is possible. The seed mixture will be evenly and uniformly planted over the disturbed area (smaller/heavier seeds have a tendency to drop the bottom of the drill and are planted first). The holder shall take appropriate measures to ensure this does not occur. Where drilling is not possible, seed will be broadcast and the area shall be raked or chained to cover the seed. When broadcasting the seed, the pounds per acre are to be doubled. The seeding will be repeated until a satisfactory stand is established as determined by the authorized officer. Evaluation of growth will not be made before completion of at least one full growing season after seeding.

Species to be planted in pounds of pure live seed* per acre:

<u>Species</u>	<u>lb/acre</u>
Alkali Sacaton (<i>Sporobolus airoides</i>)	1.0
DWS <u>Four-wing saltbush</u> (<i>Atriplex canescens</i>)	5.0

DWS: DeWinged Seed

*Pounds of pure live seed:

Pounds of seed x percent purity x percent germination = pounds pure live seed
(Insert Seed Mixture Here)

X. FINAL ABANDONMENT & REHABILITATION REQUIREMENTS

Upon abandonment of the well and/or when the access road is no longer in service the Authorized Officer shall issue instructions and/or orders for surface reclamation and restoration of all disturbed areas.

On private surface/federal mineral estate land the reclamation procedures on the road and well pad shall be accomplished in accordance with the private surface land owner agreement.