

District I
PO Box 1980, Hobbs, NM 88241-1980

District II
811 South First, Artesia, NM 88210

District III
1000 Rio Brazos Rd., Aztec, NM 87410

District IV
2040 South Pacheco, Santa Fe, NM 87505

State of New Mexico
Energy, Minerals & Natural Resources Department

OIL CONSERVATION DIVISION
2040 South Pacheco
Santa Fe, NM 87505

Form C-101
Revised October 18, 1994

Submit to Appropriate District Office
State Lease - 6 Copies
Fee Lease - 5 Copies

☐ AMENDED REPORT

APPLICATION FOR PERMIT TO DRILL, RE-ENTER, DEEPEN, PLUGBACK, OR ADD A ZONE

Operator Name and Address Nearburg Producing Company 3300 N A St., Bldg 2, Suite 120 Midland, TX 79705		OGRID Number 015742
		API Number 30-015-32636
Property Code 12595	Property Name Big Walt 2 State	Well No. 4

Surface Location

UL or lot no.	Section	Township	Range	Lot Idn	Feet from the	North/South line	Feet from the	East/West Line	County
4	2	22S	24E		660	North	990	West	Eddy

Proposed Bottom Hole Location If D

UL or lot no.	Section	Township	Range	Lot Idn	Feet from the	North/South line	County
Proposed Pool 1 Indian Basin; Upper Penn, Associated (33685)						NOTIFY OCD SPUD & TIME TO WITNESS 9 5/8" CASING	

Work Type Code N	Well Type Code O	Cable/Rotary R	Lease Type Code S	Ground Level Elevation 3891
Multiple No	Proposed Depth 8600	Formation Cisco Canyon	Contractor Patterson	Spud Date 04-01-2003

Proposed Casing and Cement Program

Hole Size	Casing Size	Casing weight/foot	Setting Depth	Sacks of Cement	Estimated TOC
14-3/4"	9-5/8"	36#	1600'	800	Circ Surface
8-3/4"	7"	23# & 26#	8600'	1000	Circ Surface

Describe the proposed program. If this application is to DEEPEN or PLUG BACK give the data on the present productive zone and proposed new productive zone. Describe the blowout prevention program, if any. Use additional sheets if necessary.

Propose to drill the well to a sufficient depth to evaluate the Cisco Canyon formation. After reaching TD, logs will be run and casing set if the evaluation is positive. Perforate, test and stimulation as necessary to establish production.

Acreage dedication is 320 acres; W/2 of Section 2.

Fresh Water Mud for 14 3/4" Hole

I hereby certify that the information given above is true and complete to the best of my knowledge and belief.

Signature: *S. Jordan*
Printed name: Sarah Jordan

Title: Production Analyst

Date: 2.10.03

Phone: 915/686-8235 ext 203

OIL CONSERVATION DIVISION

Approved By: *Sign W. Brown*
Title: District Supervisor

Approval Date: FEB 13 2003

Expiration Date: FEB 13 2004

Conditions of Approval:
Attached: ☐

DISTRICT I

P.O. Box 1980, Hobbs, NM 88241-1980

DISTRICT II

P.O. Drawer DD, Artesia, NM 88211-0719

DISTRICT III

1000 Rio Brazos Rd., Artec, NM 87410

DISTRICT IV

P.O. BOX 2088, SANTA FE, N.M. 87504-2088

State of New Mexico

Energy, Minerals and Natural Resources Department

OIL CONSERVATION DIVISION

P.O. Box 2088

Santa Fe, New Mexico 87504-2088

Form C-102

Revised February 10, 1994

Submit to Appropriate District Office

State Lease - 4 Copies

Fee Lease - 3 Copies

WELL LOCATION AND ACREAGE DEDICATION PLAT

☐ AMENDED REPORT

API Number	Pool Code 33685	Pool Name INDIAN BASIN: UPPER PENN, ASSOCIATED
Property Code	Property Name BIG WALT 2 STATE	Well Number 4
OGRID No. 015742	Operator Name NEARBURG PRODUCING COMPANY	Elevation 3891'

Surface Location

UL or lot No.	Section	Township	Range	Lot Idn	Feet from the	North/South line	Feet from the	East/West line	County
4	2	22-S	24-E		660	NORTH	990	WEST	EDDY

Bottom Hole Location If Different From Surface

UL or lot No.	Section	Township	Range	Lot Idn	Feet from the	North/South line	Feet from the	East/West line	County

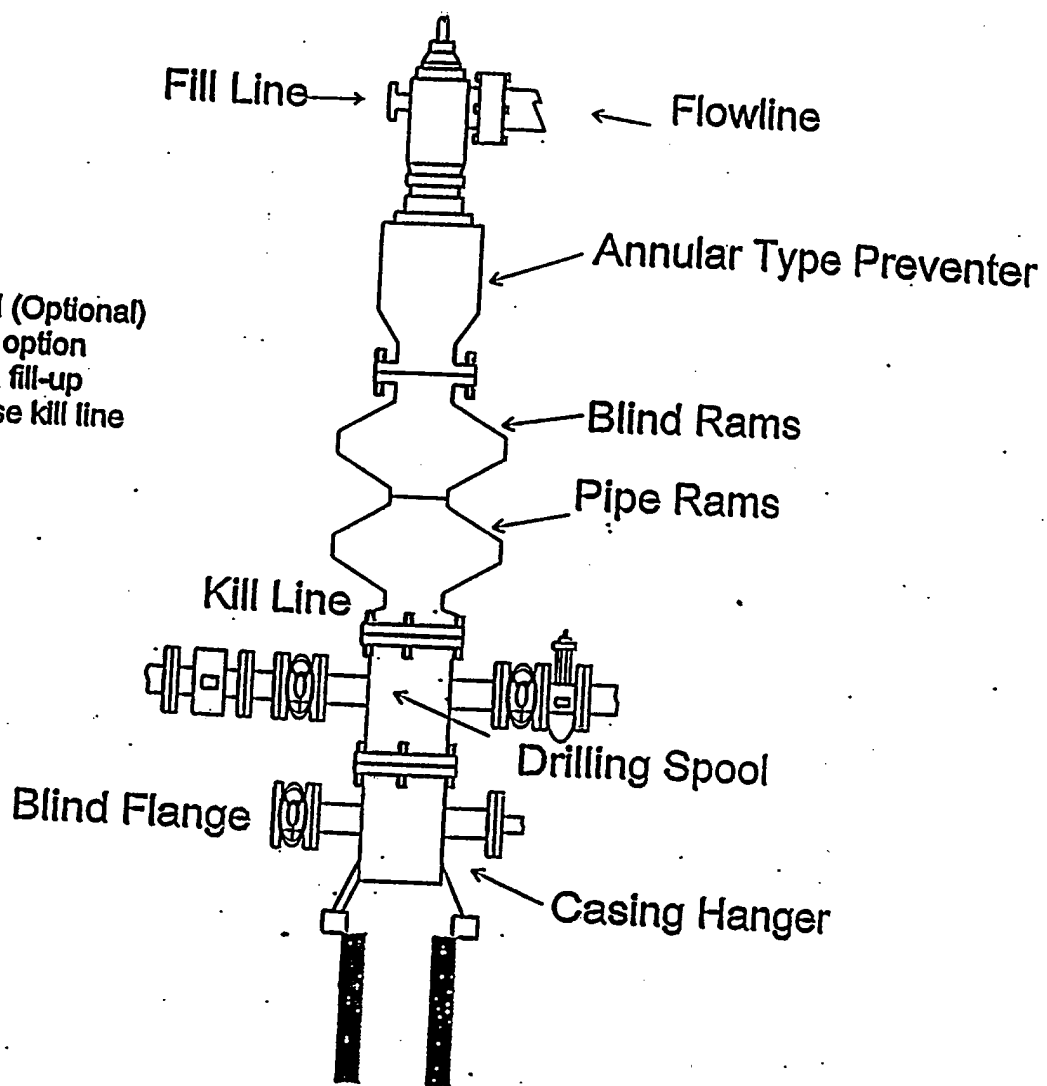
Dedicated Acres 320	Joint or Infill J	Consolidation Code	Order No.
------------------------	----------------------	--------------------	-----------

NO ALLOWABLE WILL BE ASSIGNED TO THIS COMPLETION UNTIL ALL INTERESTS HAVE BEEN CONSOLIDATED
OR A NON-STANDARD UNIT HAS BEEN APPROVED BY THE DIVISION

				<p>OPERATOR CERTIFICATION</p> <p>I hereby certify the the information contained herein is true and complete to the best of my knowledge and belief.</p> <p><i>S. Jordan</i></p> <p>Signature</p> <p>Sarah Jordan</p> <p>Printed Name</p> <p>Production Analyst</p> <p>Title</p> <p>2.10.03</p> <p>Date</p>	
<p>SURVEYOR CERTIFICATION</p> <p>I hereby certify that the well location shown on this plat was plotted from field notes of actual surveys made by me or under my supervision, and that the same is true and correct to the best of my belief.</p> <p>JANUARY 27, 2003</p> <p>Date Surveyed</p> <p>Signature & Seal of Professional Surveyor</p> <p><i>Ronald J. Eidson</i></p> <p>11/29/03</p> <p>03.11.0123</p> <p>Certificate No. RONALD J. EIDSON 3239</p> <p>GARY EIDSON 12641</p>					

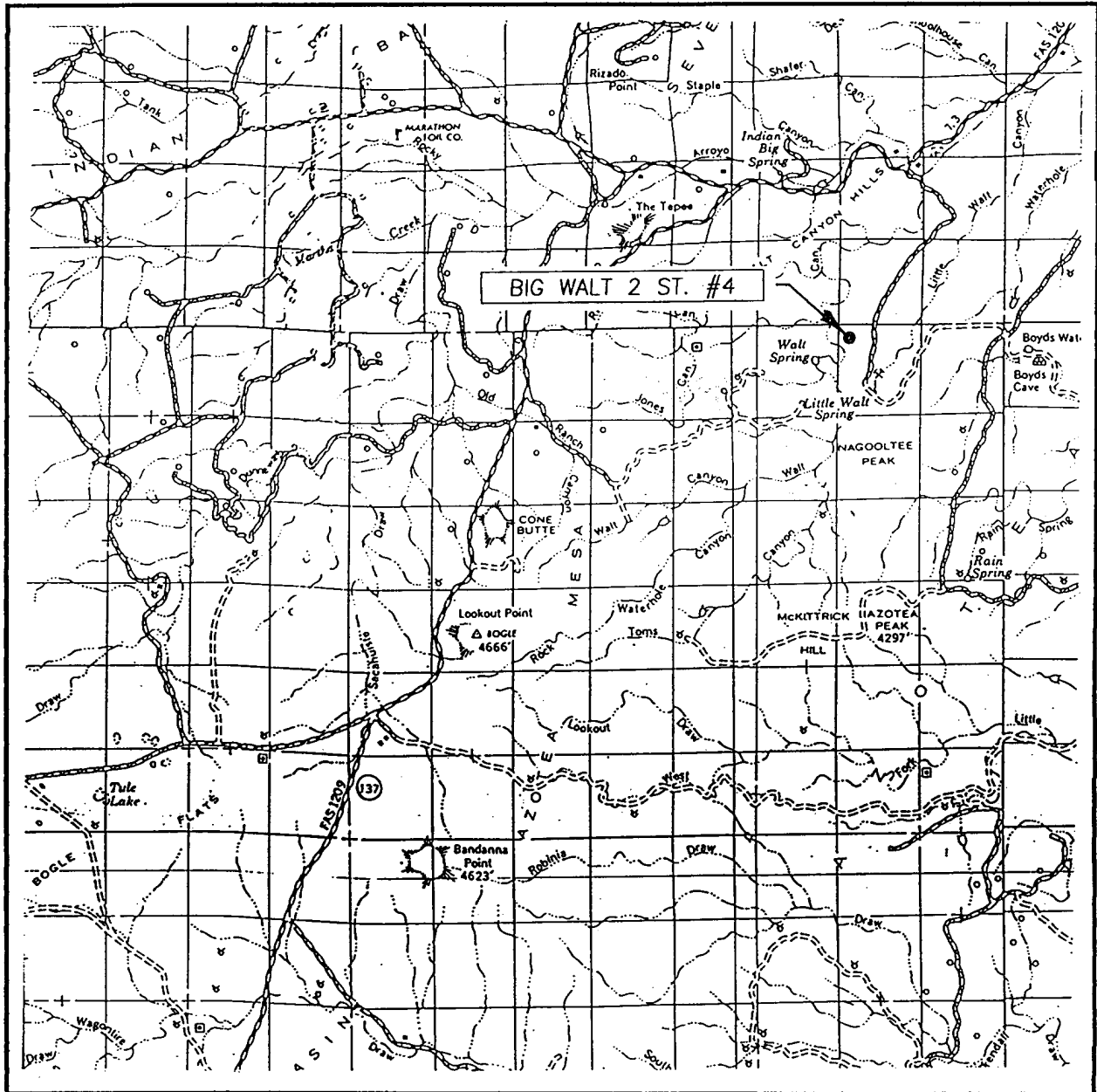
DOPE SCHEMATIC

Rotating Head (Optional)
Drilling Nipple option
must include a fill-up
line. Do not use kill line
for fill up.



1500 Series

VICINITY MAP



SCALE: 1" = 2 MILES

SEC. 2 TWP. 22-S RGE. 24-E

SURVEY N.M.P.M.

COUNTY EDDY

DESCRIPTION 660' FNL & 990' FWL

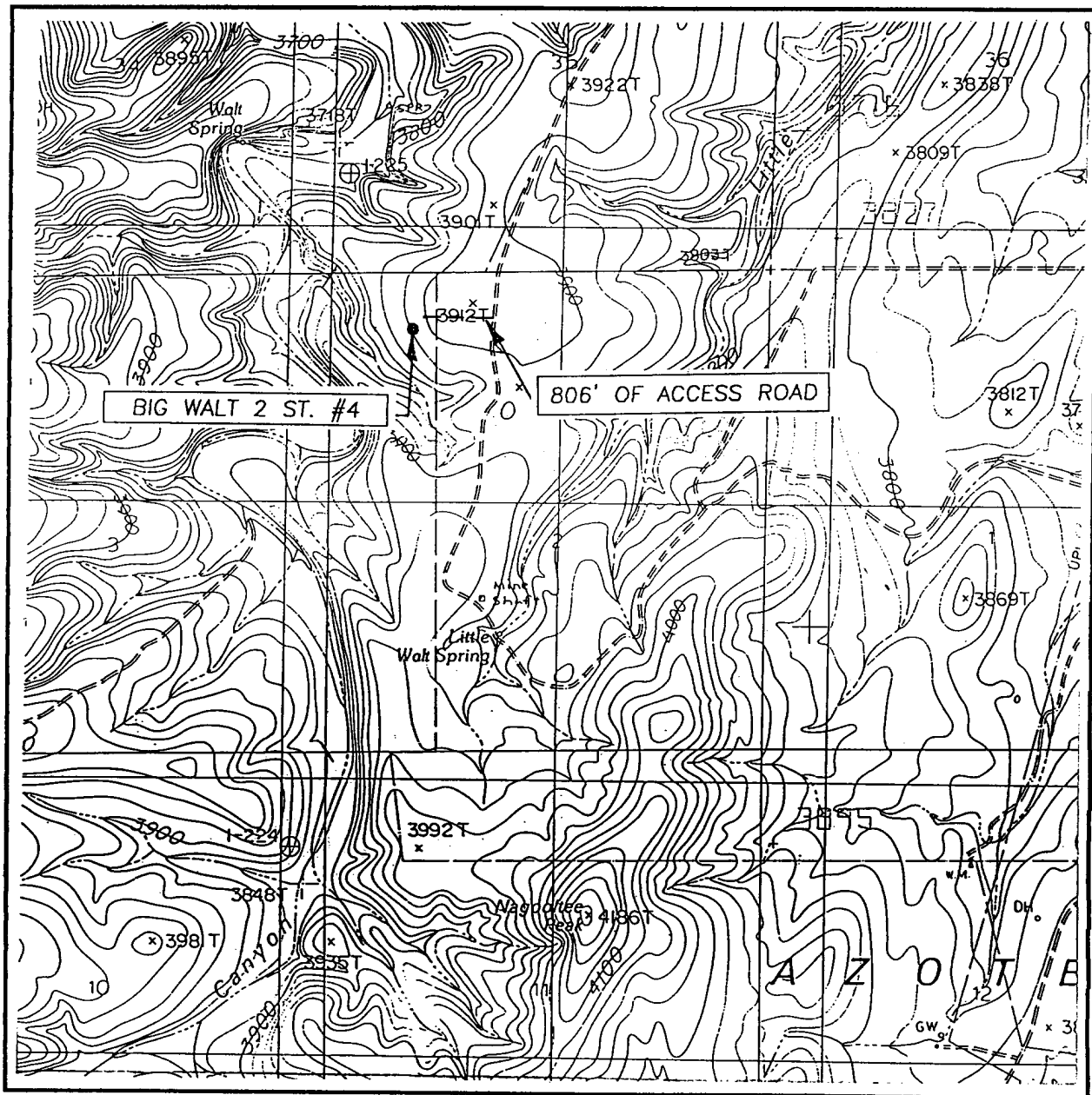
ELEVATION 3891'

OPERATOR NEARBURG PRODUCING COMPANY

LEASE BIG WALT 2 ST.

JOHN WEST SURVEYING
HOBBS, NEW MEXICO
(505) 393-3117

LOCATION VERIFICATION MAP



SCALE: 1" = 2000'

CONTOUR INTERVAL: 10'
AZOTEA PEAK, N.M.

SEC. 2 TWP. 22-S RGE. 24-E

SURVEY N.M.P.M.

COUNTY EDDY

DESCRIPTION 660' FNL & 990' FWL

ELEVATION 3891'

OPERATOR NEARBURG PRODUCING COMPANY

LEASE BIG WALT 2 ST.

U.S.G.S. TOPOGRAPHIC MAP
AZOTEA PEAK, N.M.

JOHN WEST SURVEYING
HOBBS, NEW MEXICO
(505) 393-3117