

District I  
1625 N French Dr, Hobbs, NM 88240  
District II  
1301 W Grand Avenue, Artesia, NM 88210  
District III  
1000 Rio Brazos Road, Aztec, NM 87410  
District IV  
1220 S. St. Francis Dr., Santa Fe, NM 87505



State of New Mexico  
Energy Minerals and Natural Resources  
Oil Conservation Division  
1220 South St. Francis Dr.  
Santa Fe, NM 87505

OCT 01 2008  
OCD-ARTESIA

Form C-101  
June 16, 2008

Submit to appropriate District Office

☐ AMENDED REPORT

**APPLICATION FOR PERMIT TO DRILL, RE-ENTER, DEEPEN, PLUGBACK, OR ADD A ZONE**

<sup>1</sup> Operator Name and Address RKI EXPLORATION & PRODUCTION 3817 N.W. EXPRESSWAY, SUITE 950 OKLAHOMA CITY, OKLAHOMA 73112		<sup>2</sup> OGRID Number 246289	
<sup>3</sup> Property Code 36900		<sup>4</sup> Property Name RDX 16	
<sup>5</sup> API Number 30-015-36685		<sup>6</sup> Well No 5	
<sup>9</sup> Proposed Pool 1 Brushy Draw – Delaware East		<sup>10</sup> Proposed Pool 2	

**<sup>7</sup> Surface Location**

UL or lot no	Section	Township	Range	Lot Idn	Feet from the	North/South line	Feet from the	East/West line	County
J	16	26S	30E		2310	South	2310	East	EDDY

**<sup>8</sup> Proposed Bottom Hole Location If Different From Surface**

UL or lot no	Section	Township	Range	Lot Idn	Feet from the	North/South line	Feet from the	East/West line	County

**Additional Well Information**

<sup>11</sup> Work Type Code N	<sup>12</sup> Well Type Code O	<sup>13</sup> Cable/Rotary Rotary	<sup>14</sup> Lease Type Code S	<sup>15</sup> Ground Level Elevation 3076
<sup>16</sup> Multiple N	<sup>17</sup> Proposed Depth 7500	<sup>18</sup> Formation Delaware	<sup>19</sup> Contractor Permian Drilling	<sup>20</sup> Spud Date A.S.A.P.

**<sup>21</sup> Proposed Casing and Cement Program**

Hole Size	Casing Size	Casing weight/foot	Setting Depth	Sacks of Cement	Estimated TOC
17 1/2"	13 3/8"	54.5#	450	401	Surface
11"	8 5/8"	32#	3329	896	Surface
7 5/8"	5 1/2"	17#	7500	458	<del>3129</del> 2700'

<sup>22</sup> Describe the proposed program. If this application is to DEEPEN or PLUG BACK, give the data on the present productive zone and proposed new productive zone. Describe the blowout prevention program, if any. Use additional sheets if necessary.

Pits must be registered, operated,  
maintained and closed per 19.15.17  
[NMAC]

<sup>23</sup> I hereby certify that the information given above is true and complete to the best of my knowledge and belief

Signature:

*Bill Aubrey*

Printed name: Bill Aubrey

Title: Regulatory

E-mail Address: baubrey@rkixp.com

Date: 9-29-08

Phone 405 996.5750

OIL CONSERVATION DIVISION

Approved by:

*Jim W. Green*  
*District II Supervisor*

Title:

Approval Date: 10/9/08

Expiration Date: 10/9/10

Conditions of Approval Attached ☐



DISTRICT I  
1625 N. French Dr., Hobbs, NM 88240

DISTRICT II  
1301 W. Grand Avenue, Artesia, NM 88210

DISTRICT III  
1000 Rio Brazos Rd., Aztec, NM 87410

DISTRICT IV  
1220 S. St. Francis Dr., Santa Fe, NM 87505

State of New Mexico  
Energy, Minerals and Natural Resources Department

OIL CONSERVATION DIVISION  
1220 South St. Francis Dr.  
Santa Fe, New Mexico 87505

Form C-102  
Revised October 12, 2005

Submit to Appropriate District Office  
State Lease - 4 Copies  
Fee Lease - 3 Copies

☐ AMENDED REPORT

WELL LOCATION AND ACREAGE DEDICATION PLAT

API Number <i>30-015-36685</i>	Pool Code <i>8090</i>	Pool Name <i>Brushy Draw; Delaware East</i>
Property Code <i>36900</i>	Property Name RDX "16"	Well Number 5
GRID No. <i>246289</i>	Operator Name RKI EXPLORATION & PRODUCTION	Elevation 3076'

Surface Location

UL or lot No.	Section	Township	Range	Lot Idn	Feet from the	North/South line	Feet from the	East/West line	County
J	16	26 S	30 E		2310	SOUTH	2310	EAST	EDDY

Bottom Hole Location If Different From Surface

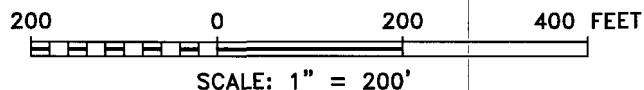
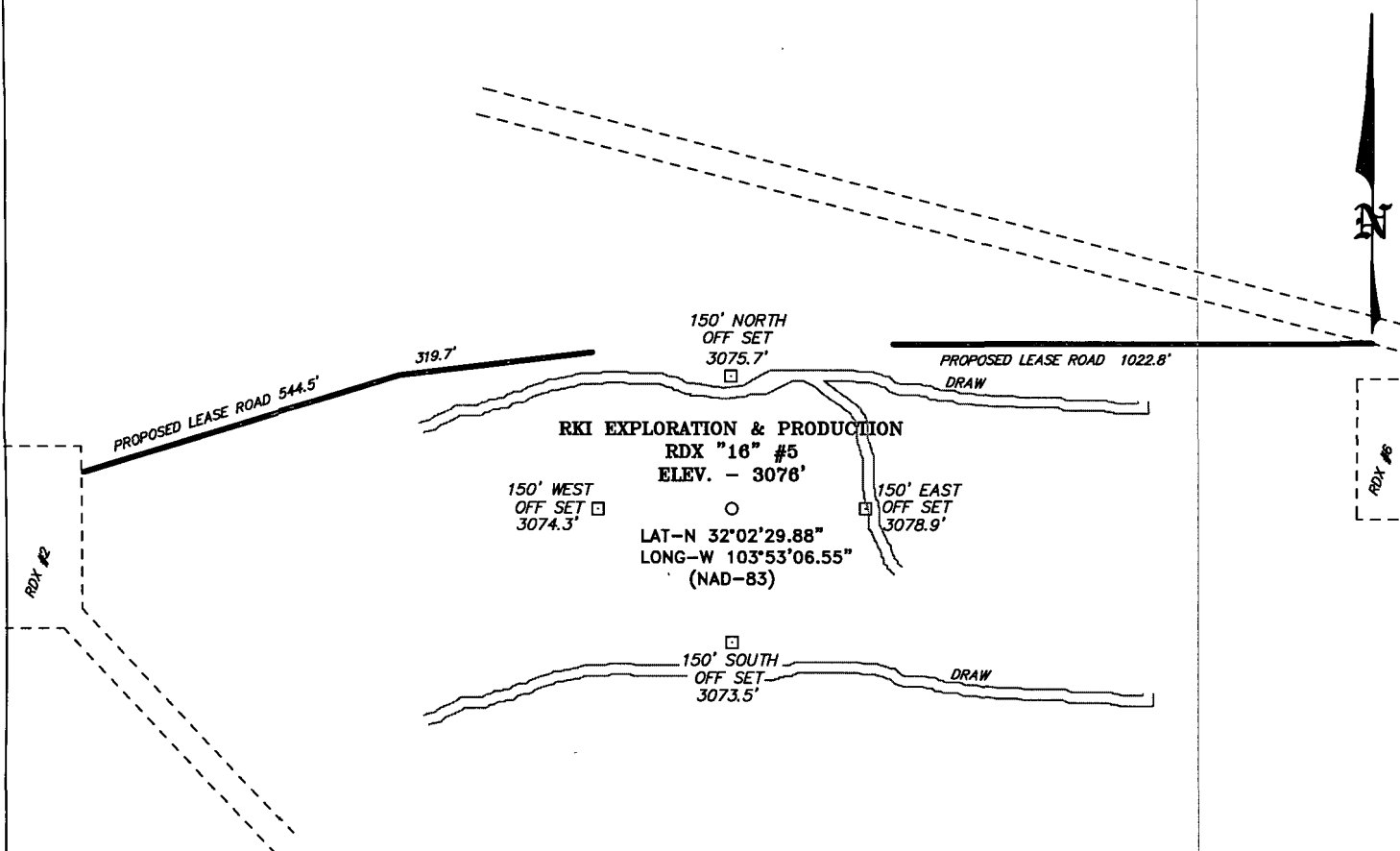
UL or lot No.	Section	Township	Range	Lot Idn	Feet from the	North/South line	Feet from the	East/West line	County

Dedicated Acres <i>40</i> ✓	Joint or Infill	Consolidation Code	Order No.
--------------------------------	-----------------	--------------------	-----------

NO ALLOWABLE WILL BE ASSIGNED TO THIS COMPLETION UNTIL ALL INTERESTS HAVE BEEN CONSOLIDATED  
OR A NON-STANDARD UNIT HAS BEEN APPROVED BY THE DIVISION

<div>SURFACE LOCATION LAT N.: 32°02'29.88" LONG W.: 103°53'06.55" N.: 379169.906 SPC-E.: 680206.270 (NAD-83)</div> <div>2310'</div> <div>2310'</div>				<b>OPERATOR CERTIFICATION</b>  <i>I hereby certify that the information contained herein is true and complete to the best of my knowledge and belief, and that this organization either owns a working interest or unleased mineral interest in the land including the proposed bottom hole location pursuant to a contract with an owner of such a mineral or working interest, or to a voluntary pooling agreement or a compulsory pooling order heretofore entered by the division.</i>  Signature _____ Date _____  Printed Name _____	
				<b>SURVEYOR CERTIFICATION</b>  <i>I hereby certify that the well location shown on this plat was plotted from field notes of actual surveys made by me or under my supervision, and that the same is true and correct to the best of my belief.</i>  JULY 25 2008 Date Surveyed _____ Signature & Seal of Professional Surveyor _____ W. L. Jones 7977 Certificate No. Gary L. Jones 7977	
				BASIN SURVEYS	

SECTION 16, TOWNSHIP 26 SOUTH, RANGE 30 EAST, N.M.P.M.,  
EDDY COUNTY, NEW MEXICO.



**DIRECTIONS TO LOCATION:**

FROM THE JUNCTION OF HWY 285 AND LONGHORN,  
GO EAST 3.9 MILES TO SECOND ROAD ON RIGHT  
PAST A LOW WATER CROSSING, GO EAST 5.9 MILES  
TO LEAS ROAD, ON LEASE ROAD GO SOUTH 1.2  
MILES TO 2-TRACK, GO EAST TO PROPOSED LEASE  
ROAD.

**BASIN SURVEYS** P.O. BOX 1786-HOBBS, NEW MEXICO

**RKI EXPLORATION & PRODUCTION**

REF: RDX "16" #5 / Well Pad Topo

THE RDX "16" #5 LOCATED 2310' FROM  
THE SOUTH LINE AND 2310' FROM THE EAST LINE OF  
SECTION 16, TOWNSHIP 26 SOUTH, RANGE 30 EAST,  
N.M.P.M., EDDY COUNTY, NEW MEXICO.

W.O. Number: 19981

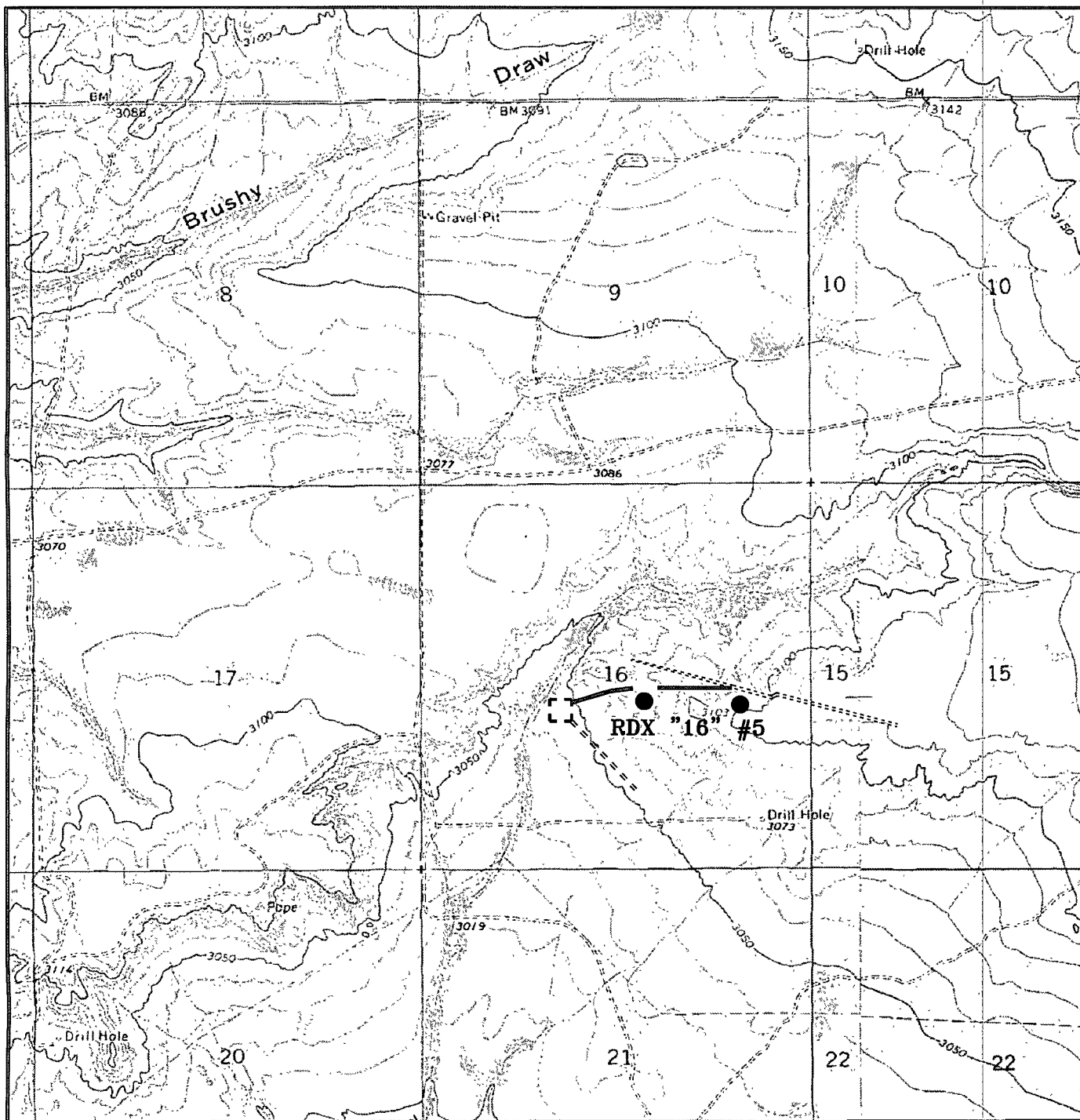
Drawn By: J. M. SMALL

Date: 07-28-2008

Disk: JMS 19981

Survey Date: 07-25-2008

Sheet 1 of 1 Sheets



**RDX "16" #5**

Located at 2310' FSL AND 2310' FEL  
Section 16, Township 26 South, Range 30 East,  
N.M.P.M., Eddy County, New Mexico.

**basin**  
**surveys**  
focused on excellence  
in the oilfield

P.O. Box 1786  
1120 N. West County Rd.  
Hobbs, New Mexico 88241  
(505) 393-7316 - Office  
(505) 392-3074 - Fax  
basinsurveys.com

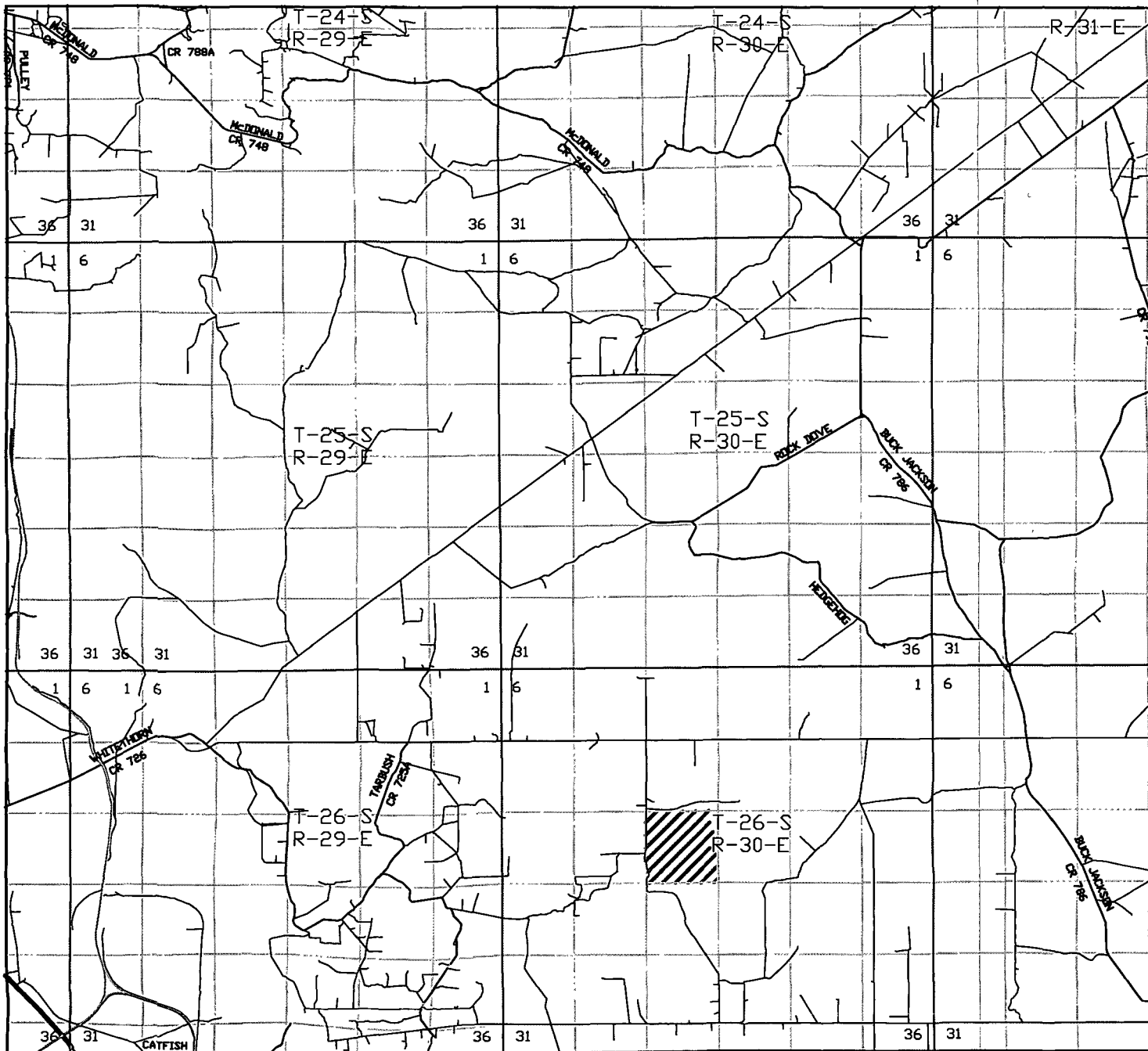
W.O. Number: 19981

Survey Date: 07-25-2008

Scale: 1" = 2000'

Date: 07-28-2008

**RKI**  
**EXPLORATION &**  
**PRODUCTION**



RDX "16" #5

Located at 2310' FSL and 2310' FEL  
Section 16, Township 26 South, Range 30 East,  
N.M.P.M., Eddy County, New Mexico.

**basin**  
**surveys**  
focused on excellence  
in the oilfield

P.O. Box 1786  
1120 N. West County Rd.  
Hobbs, New Mexico 88241  
(505) 393-7316 - Office  
(505) 392-3074 - Fax  
basinsurveys.com

W.O. Number: JMS 19981

Survey Date: 07-25-2008

Scale: 1" = 2 MILES

Date: 07-28-2008

*RKI*  
**EXPLORATION &  
PRODUCTION**