

District I  
1625 N. French Dr., Hobbs, NM 88240  
District II  
1301 W. Grand Avenue, Artesia, NM 88210  
District III  
1000 Rio Brazos Road, Aztec, NM 87410  
District IV  
1220 S. St. Francis Dr., Santa Fe, NM 87505

State of New Mexico  
Energy Minerals and Natural Resources

Form C-101  
June 16, 2008

Oil Conservation Division  
1220 South St. Francis Dr.  
Santa Fe, NM 87505

Submit to appropriate District Office

☐ AMENDED REPORT

APPLICATION FOR PERMIT TO DRILL, RE-ENTER, DEEPEN, PLUGBACK, OR ADD A ZONE

<sup>1</sup> Operator Name and Address RKI EXPLORATION & PRODUCTION, LLC. 3817 NM EXPRESSWAY SUITE 950 OKLAHOMA CITY, OKLAHOMA 73112		<sup>2</sup> OGRID Number 246289
		<sup>3</sup> API Number 30-015-36694 AUG 14 2008 UCD-ARTESIA
<sup>4</sup> Property Code 37424	<sup>5</sup> Property Name BRASKY "27"	<sup>6</sup> Well No. # 1
<sup>7</sup> Proposed Pool 1 WILLOW LAKE-BONE SPRING (64450)		<sup>8</sup> Proposed Pool 2

<sup>7</sup> Surface Location

UL or lot no.	Section	Township	Range	Lot Idn	Feet from the	North/South line	Feet from the	East/West line	County
K	27	24S	28E		2460'	SOUTH	1550'	WEST	EDDY

<sup>8</sup> Proposed Bottom Hole Location If Different From Surface

UL or lot no.	Section	Township	Range	Lot Idn	Feet from the	North/South line	Feet from the	East/West line	County

Additional Well Information

<sup>11</sup> Work Type Code N	<sup>12</sup> Well Type Code O	<sup>13</sup> Cable/Rotary ROTARY	<sup>14</sup> Lease Type Code P	<sup>15</sup> Ground Level Elevation 2995'
<sup>16</sup> Multiple NO	<sup>17</sup> Proposed Depth 6300'	<sup>18</sup> Formation BONE SPRING	<sup>19</sup> Contractor TEACO	<sup>20</sup> Spud Date WHEN APPROVED

<sup>21</sup> Proposed Casing and Cement Program

Hole Size	Casing Size	Casing weight/foot	Setting Depth	Sacks of Cement	Estimated TOC
26"	20"	Conductor	40'	Redi-mix	Surface
12 1/2"	9 5/8"	36#	450'	223 Sx.	Surface
7 7/8"	5 1/2"	17#	6300'	560 Sx.	Surface

<sup>22</sup> Describe the proposed program. If this application is to DEEPEN or PLUG BACK, give the data on the present productive zone and proposed new productive zone. Describe the blowout prevention program, if any. Use additional sheets if necessary.

Current Form C-144 must be approved  
prior to commencement of drilling  
activities ATTACHED SHEET

<sup>23</sup> I hereby certify that the information given above is true and complete to the best of my knowledge and belief.

Signature:

*Joe T. Janica*

Printed name: Joe T. Janica

Title: Permit Eng.

E-mail Address: joejanica@valornet.com

Date: 08/13/08

Phone: 575-391-8503

OIL CONSERVATION DIVISION

Approved by:

*Jim W. Brown*  
*District II Supervisor*


Title:

Approval Date:

Expiration Date:

Conditions of Approval Attached ☐

1. Drill 26" hole to 40'. Set 40' of 20" conductor pipe and cement to surface with Redi-mix.
2. Drill 12 $\frac{1}{4}$ " hole to 450'. Run and set 450' of 9 5/8" 36# J-55 ST&C casing. Cement with 223 Sx. of Class "C" cement + 2% CaCl, + .125#/Sx of Polyflakes, Yield 1.34. Circulate cement to surface.
3. Drill 7 7/8" hole to 6300'. Run and set 6300' of 5 $\frac{1}{2}$ " 17# J-55 LT&C casing. Cement with 360 Sx. of 40/60 (CemPlus Blend/LITEFIL(24#/CF)) + .2% Retarder, + 1% antiseptling agent, + .3% Dispersant, + .2% Antifoamer. 125#/Sx Polyflakes. Yield 2.61. Tail in with 200 Sx. of 40/60 (CemPlus Blend/Litefill(24#/CF)) + .2% Retarder, + 1% Antiseptling agent, + .3% Dispersant, + .2% Antifoamer, + .125#/Sx Polyflakes. Yield 2.27 circulate cement to surface.



# New Mexico Energy, Minerals and Natural Resources Department

**Bill Richardson**  
Governor

**Joanna Prukop**  
Cabinet Secretary  
**Reese Fullerton**  
Deputy Cabinet Secretary

**Mark Fesmire**  
Division Director  
Oil Conservation Division



October 3, 2008

Mr. W. Thomas Kellahin  
Kellahin & Kellahin  
706 Gonzales Rd  
Santa Fe, NM 87501

**OCT 08 2008**  
**OCD-ARTESIA**

**Administrative Order NSL-5932**

**Re: RKI Exploration & Production, LLC**  
**Braskey 27 Well No. 1**  
**API No. 30-015**  
**2460 feet FSL and 1550 feet FWL**  
**Unit K, Section 27-24S-28E**  
**Eddy County, New Mexico**

Dear Mr. Kellahin:

Reference is made to the following:

(a) your application (**administrative application reference No. pKVR08-24953574**) submitted to the New Mexico Oil Conservation Division (the Division) in Santa Fe, New Mexico, on behalf of RKI Exploration & Production, LLC (RKI), on September 5, 2008, and

(b) the Division's records pertinent to this request.

RKI has requested to drill the above-referenced well at an unorthodox oil well location, described above in the caption of this letter. The NE/4 SW/4 of Section 27 will be dedicated to this well in order to form a standard 40-acre spacing unit in the undesignated Willow Lake-Delaware Pool (64453) or the undesignated Malaga-Delaware Pool (42940). Both of these pools are governed by statewide Rule 104.B(1), which provides for 40-acre units, with wells located at least 330 feet from a unit outer boundary. This location is less than 330 feet from the northern and western unit boundaries.

Your application on behalf of RKI has been duly filed under the provisions of Division Rules 104.F and 1210.A(2).

It is our understanding that you are seeking this location for topographic reasons.

Oil Conservation Division \* 1220 South St. Francis Drive

\* Santa Fe, New Mexico 87505

\* Phone: (505) 476-3440 \* Fax (505) 476-3462\* <http://www.emnrd.state.nm.us>



October 3, 2008

Page 2

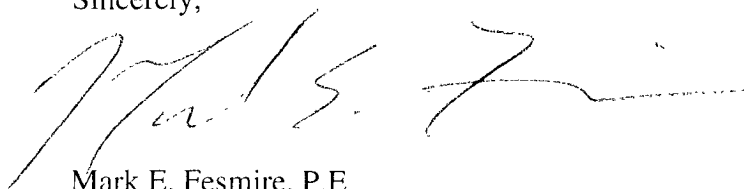
It is also understood that you have given due notice of this application to all operators or owners who are "affected persons," as defined in Rule 1210.A(2), in all adjoining units towards which the proposed location encroaches.

Pursuant to the authority conferred by Division Rule 104.F(2), the above-described unorthodox location is hereby approved.

This approval is subject to your being in compliance with all other applicable Division rules, including, but not limited to Division Rule 40.

Jurisdiction of this case is retained for the entry of such further orders as the Division may deem necessary.

Sincerely,

A handwritten signature in black ink, appearing to read 'Mark E. Fesmire', written over a horizontal line.

Mark E. Fesmire, P.E.  
Director

MEF/db

cc: New Mexico Oil Conservation Division - Artesia  
New Mexico State Land Office - Santa Fe

DISTRICT I  
1625 N. French Dr., Hobbs, NM 88240  
DISTRICT II  
1301 W. Grand Avenue, Artesia, NM 88210  
DISTRICT III  
1000 Rio Brazos Rd., Aztec, NM 87410  
DISTRICT IV  
1220 S. St. Francis Dr., Santa Fe, NM 87505

State of New Mexico  
Energy, Minerals and Natural Resources Department

Form C-102  
Revised October 12, 2005

Submit to Appropriate District Office  
State Lease - 4 Copies  
Fee Lease - 3 Copies

OIL CONSERVATION DIVISION  
1220 South St. Francis Dr.  
Santa Fe, New Mexico 87505

☐ AMENDED REPORT

WELL LOCATION AND ACREAGE DEDICATION PLAT

API Number <b>30-015-</b>	Pool Code <b>64450</b>	Pool Name <b>WILLOW LAKE BONE SPRING</b>
Property Code <b>37424</b>	Property Name <b>BRASKY 27</b>	Well Number <b>1</b>
OGRID No. <b>246289</b>	Operator Name <b>RKI EXPLORATION &amp; PRODUCTION</b>	Elevation <b>2995'</b>

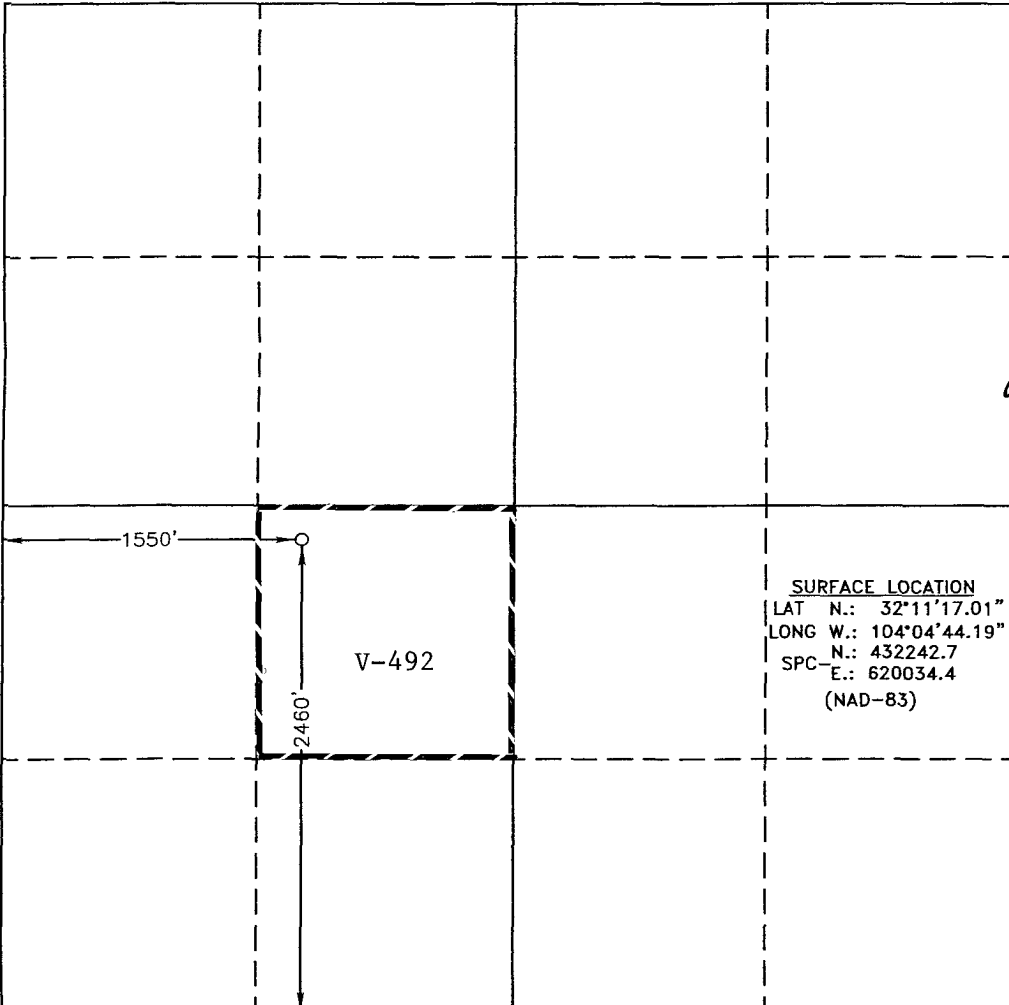
Surface Location

UL or lot No.	Section	Township	Range	Lot Idn	Feet from the	North/South line	Feet from the	East/West line	County
K	27	24 S	28 E		2460	SOUTH	1550	WEST	EDDY

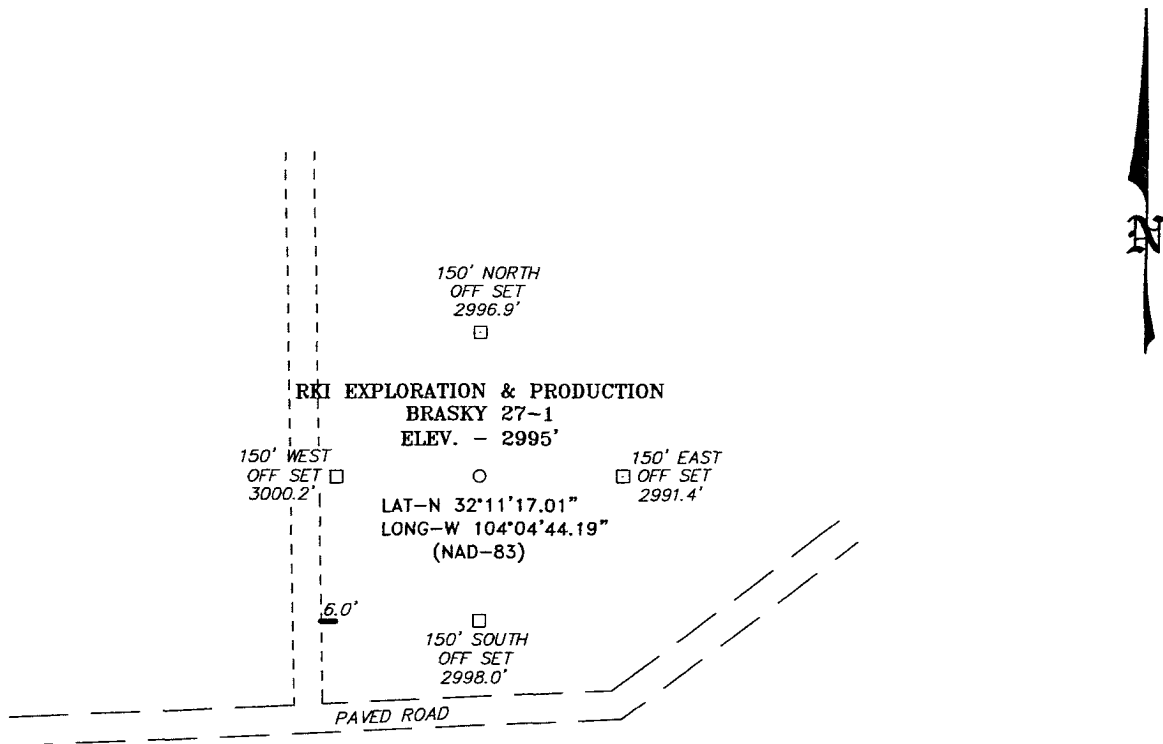
Bottom Hole Location If Different From Surface

UL or lot No.	Section	Township	Range	Lot Idn	Feet from the	North/South line	Feet from the	East/West line	County
Dedicated Acres <b>40</b>	Joint or Infill	Consolidation Code	Order No.						

NO ALLOWABLE WILL BE ASSIGNED TO THIS COMPLETION UNTIL ALL INTERESTS HAVE BEEN CONSOLIDATED  
OR A NON-STANDARD UNIT HAS BEEN APPROVED BY THE DIVISION

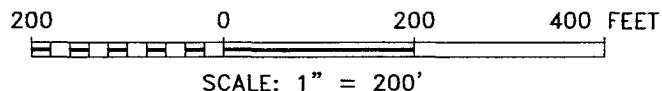
	<p><b>OPERATOR CERTIFICATION</b></p> <p>I hereby certify that the information contained herein is true and complete to the best of my knowledge and belief, and that this organization either owns a working interest or unleased mineral interest in the land including the proposed bottom hole location pursuant to a contract with an owner of such a mineral or working interest, or to a voluntary pooling agreement or a compulsory pooling order heretofore entered by the division.</p> <p><i>Joe T. Janica</i> Signature Date <b>Joe T. Janica</b> 08/13/08 Printed Name</p>
	<p><b>SURVEYOR CERTIFICATION</b></p> <p>I hereby certify that the well location shown on this plat was plotted from field notes of actual surveys made by me or under my supervision, and that the same is true and correct to the best of my belief.</p> <p><b>JANUARY 21, 2008</b></p> <p>Date Surveyed Signature &amp; Seal of Professional Surveyor <i>GARY L JONES</i> 7977 Certificate No. 19898 Professional Surveyor BASIN SURVEYS</p>

SECTION 27, TOWNSHIP 24 SOUTH, RANGE 28 EAST, N.M.P.M.,  
EDDY COUNTY, NEW MEXICO.



*DIRECTIONS TO LOCATION:*

FROM THE MALAGA, GO SOUTH ON US HWY 285 FOR 1.5 MILES TO LEASE ROAD, ON LEASE ROAD GO WEST 1.7 MILES WINDING SOUTH FOR 0.5 MILES TO LEASE ROAD, GO EAST ON LEASE ROAD WINDING SOUTH FOR 0.4 MILES TO PROPOSED LEASE ROAD.

**RKI EXPLORATION & PRODUCTION**

REF: BRASKY 27-1 / Well Pad Topo

THE BRASKY 27-1 LOCATED 2460' FROM

THE SOUTH LINE AND 1550' FROM THE WEST LINE OF

N.M.P.M., EDDY COUNTY, NEW MEXICO.

**BASIN SURVEYS** P.O. BOX 1786—HOBBS, NEW MEXICO

W.O. Number: 19098

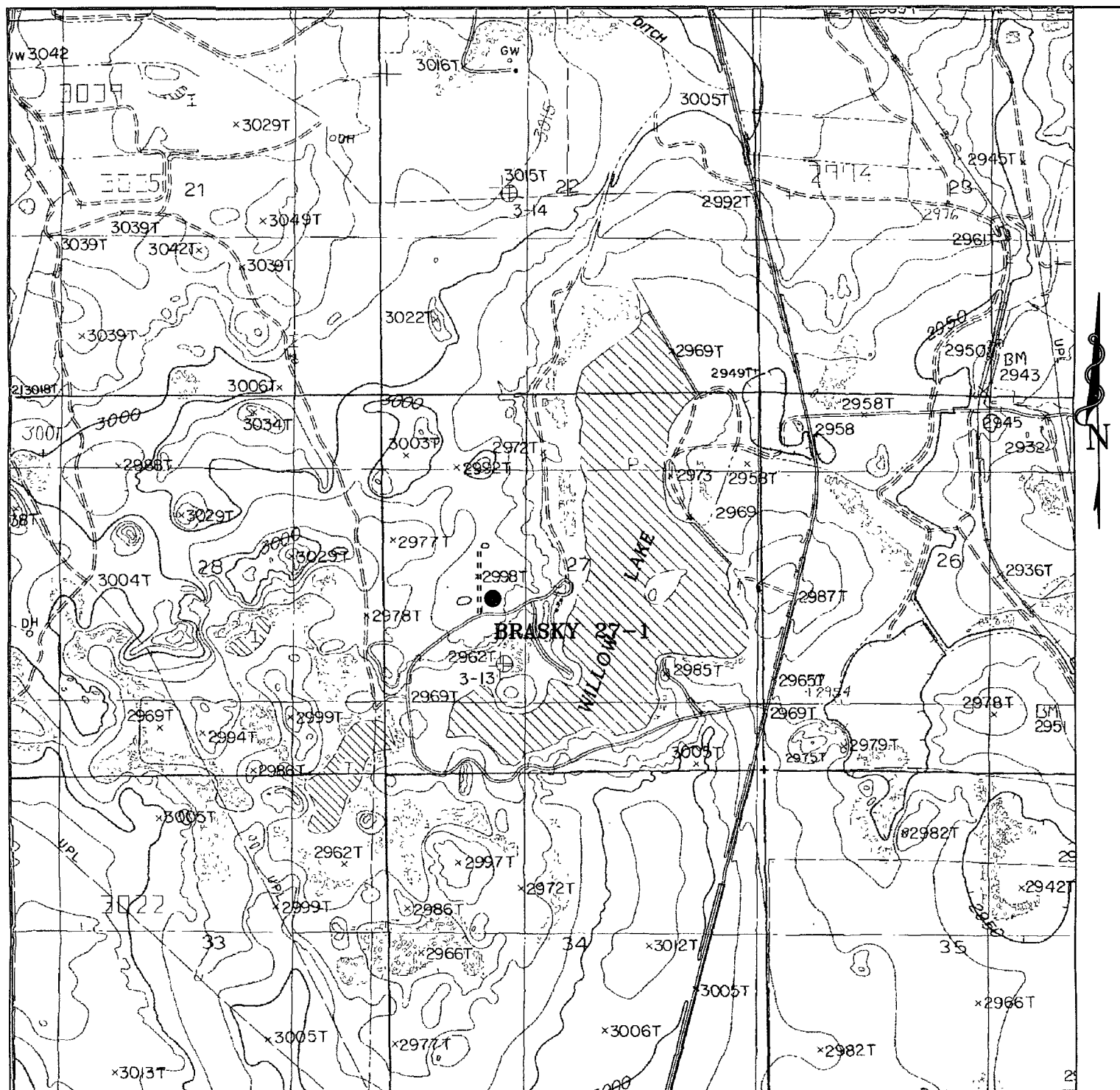
Drawn By: J. M. SMALL

Date: 01-22-2008

Disk: JMS 19098W

Survey Date: 01-21-2008

Sheet 1 of 1 Sheets



## BRASKY 27-1

Located at 2460' FSL AND 1550' FWL  
Section 27, Township 24 South, Range 28 East,  
N.M.P.M., Eddy County, New Mexico.



focused on excellence  
in the oilfield

P.O. Box 1786  
1120 N. West County Rd.  
Hobbs, New Mexico 88241  
(505) 393-7316 - Office  
(505) 392-3074 - Fax  
basinsurveys.com

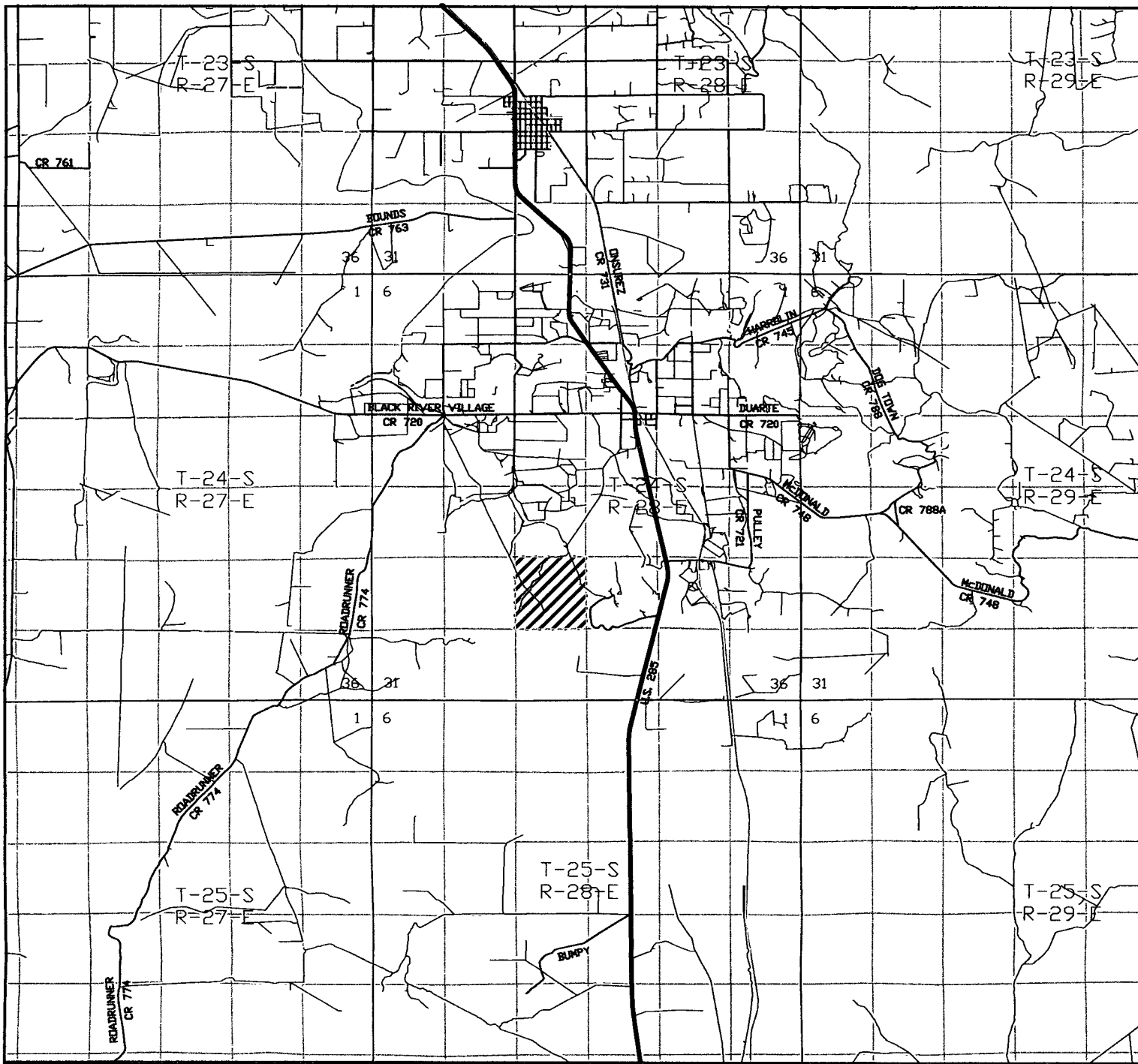
W.O. Number: 19098T

Survey Date: 01-21-2008

Scale: 1" = 2000'

Date: 01-22-2008

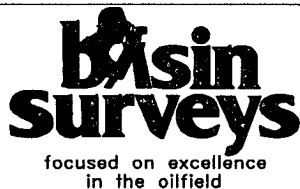
RKI  
EXPLORATION &  
PRODUCTION



BRASKY 27-1

Located at 2640' FSL and 1550' FWL

Section 27, Township 24 South, Range 28 East,  
N.M.P.M., Eddy County, New Mexico.



P.O. Box 1786  
1120 N. West County Rd.  
Hobbs, New Mexico 88241  
(505) 393-7316 - Office  
(505) 392-3074 - Fax  
basinsurveys.com

W.O. Number: JMS 19098TR

Survey Date: 01-21-2008

Scale: 1" = 2 MILES

Date: 01-22-2008

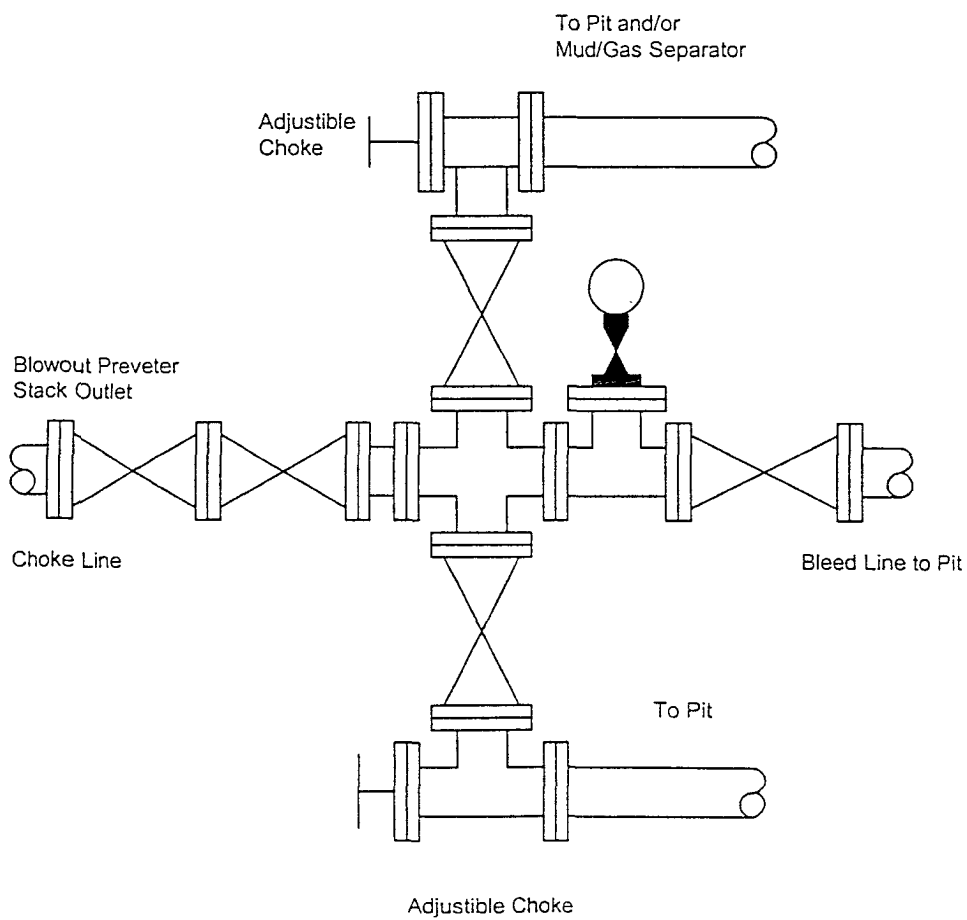
RKI  
EXPLORATION &  
PRODUCTION



# BLOWOUT PREVENTER SYSTEM

2000 PSI WP

## Choke Manifold Assembly for 5M WP System



Fill Line

