

District I
1625 N. French Dr., Hobbs, NM 88240
District II
811 South First, Artesia, NM 88210
District III
1000 Rio Brazos Road, Aztec, NM 87410
District IV
2040 South Pacheco, Santa Fe, NM 87505

State of New Mexico
Energy Minerals and Natural Resources

Form C-101
Revised March 17, 1999

Oil Conservation Division
2040 South Pacheco,
Santa Fe, NM 87505

RECEIVED

Submit to appropriate District Office
State Lease - 6 Copies
Fee Lease - 5 Copies

OCD-ARTESIA

☐ AMENDED REPORT

APPLICATION FOR PERMIT TO DRILL, RE-ENTER, DEEPEN, PLUGBACK, OR ADD A ZONE

Operator Name and Address CONCHO RESOURCES, INC. FASKEN CENTER, TOWER II, 500 WEST TEXAS AVENUE SUITE 1300, MIDLAND, TEXAS 79701		OGRIID Number 193407
Property Code		API Number 30-005-60345
Property Name NORTH KING CAMP UNLT		Well No. 12

Surface Location

UL or lot no.	Section	Township	Range	Lot Ids	Feet from the	North/South line	Feet from the	East/West line	County
E	36	13 S	29E		1980'	NORTH	660'	WEST	CHAVES

Proposed Bottom Hole Location If Different From Surface

UL or lot no.	Section	Township	Range	Lot Ids	Feet from the	North/South line	Feet from the	East/West line	County
Proposed Pool 1 WOLFCAMP WILDCAT					Proposed Pool 2				

Work Type Code E	Well Type Code O	Cabler/Rotary ROTARY	Lease Type Code S	Ground Level Elevation 3754'
Multiple NO	Proposed Depth 7900'	Formation WOLFCAMP	Contractor UNKNOWN	Spud Date WHEN APPROVED

Proposed Casing and Cement Program

Hole Size	Casing Size	Casing weight/foot	Setting Depth	Sacks of Cement	Estimated TOC
15"	13 3/8"	48	318'	300 Sx.	Surface
12 1/4"	8 5/8"	24	2460'	500 Sx	Surface
7 7/8"	5 1/2"	17	7900'	650 Sx.	5900' FS

Describe the proposed program. If this application is to DEEPEN or PLUG BACK, give the data on the present productive zone and proposed new productive zone. Describe the blowout prevention program, if any. Use additional sheets if necessary.

SEE ATTACHED SHEET

Cement to cover all oil, gas and water bearing zones.

I hereby certify that the information given above is true and complete to the best of my knowledge and belief.		OIL CONSERVATION DIVISION	
Signature: <i>Joe T. Janica</i>		Approved by: <i>Jim W. Gurn</i>	
Printed name: Joe T. Janica		Title: <i>District Supervisor</i>	
Title: Agent		Approval Date: NOV 12 2003 Expiration Date: NOV 12 2004	
Date: 11/07/03	Phone: 505-391-8503	Conditions of Approval: Attached <input type="checkbox"/>	

CONCHO RESOURCES, INC.
NORTH KING CAMP UNIT # 12
UNIT "E" SECTION 36
T13S-R29E CHAVES CO. NM

1. Clean location and dig reserve pits.
2. Dig out cellar to 8 5/8" casing stub and drill out surface plug with rathole machine.
3. Dress off the 8 5/8" casing stub, weld on 11" 3000 PSI casing head.
4. Move in drilling rig and rig up same. Install 3000 PSI B.O.P. Pick up 7 7/8" bit , Drill Collars, Drill Pipe go in hole and drill plugs. Clean out hole to 7900'±. Condition hole to run 5½" casing.
5. Come out of hole lay down drill pipe, drill collars and bit. Rig up to run 5½" 17# J-55 LT&C casing. Cement with 650 Sx. of Class "H" cement + additives, estimate top of cement 5900'.
6. Rig up perforators and perforate zones of interest, test zones and complete well.
7. Rig down completion equipment. Construct production facilities and place well on production.

North King Camp Unit #12

Lease No.:

Dist. No. :

County: Chaves

Field: Crowflats

Section:

36

Twsp: 13S

Rge: 29E

Unit Ltr: E

Location: 1980' FNL & 660' FWL

Spud Date: 05/13/75

TD Date: 06/26/75

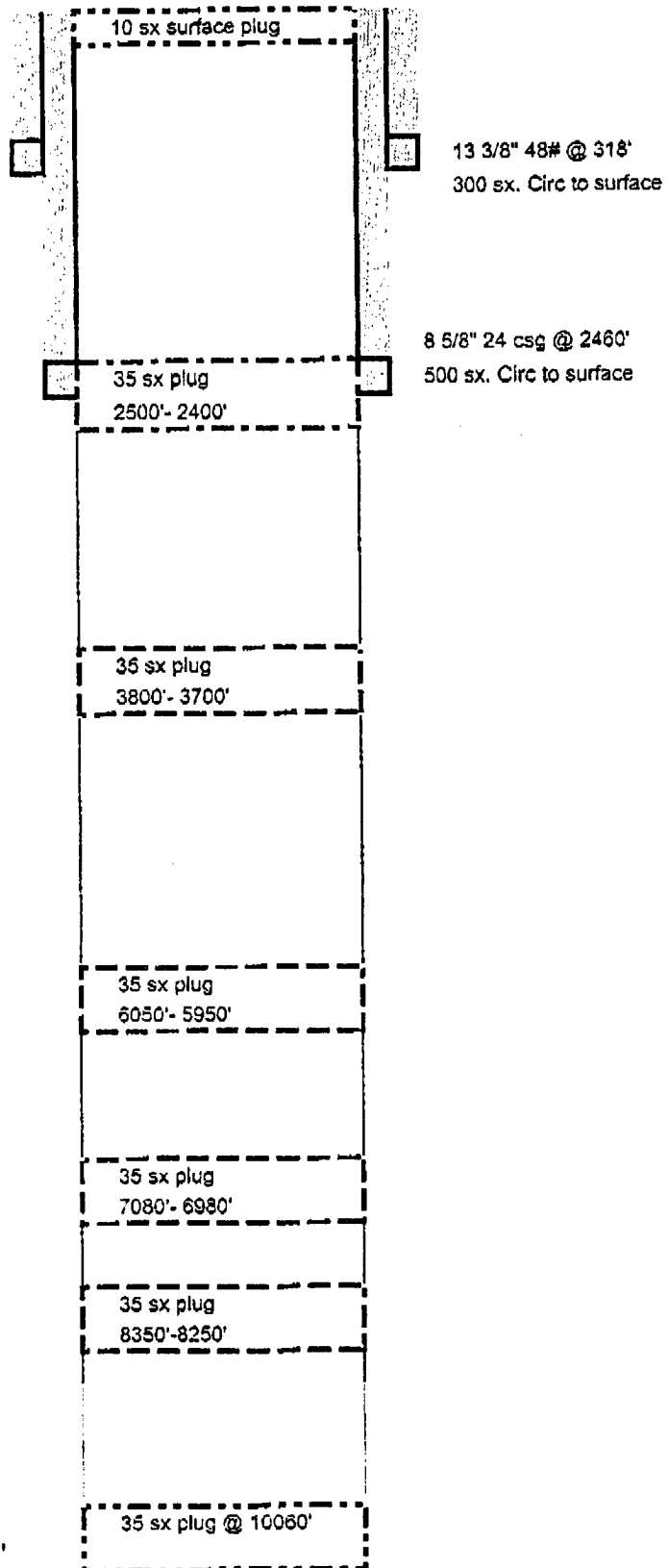
Comp Date: P & A

Hole size
15.0"

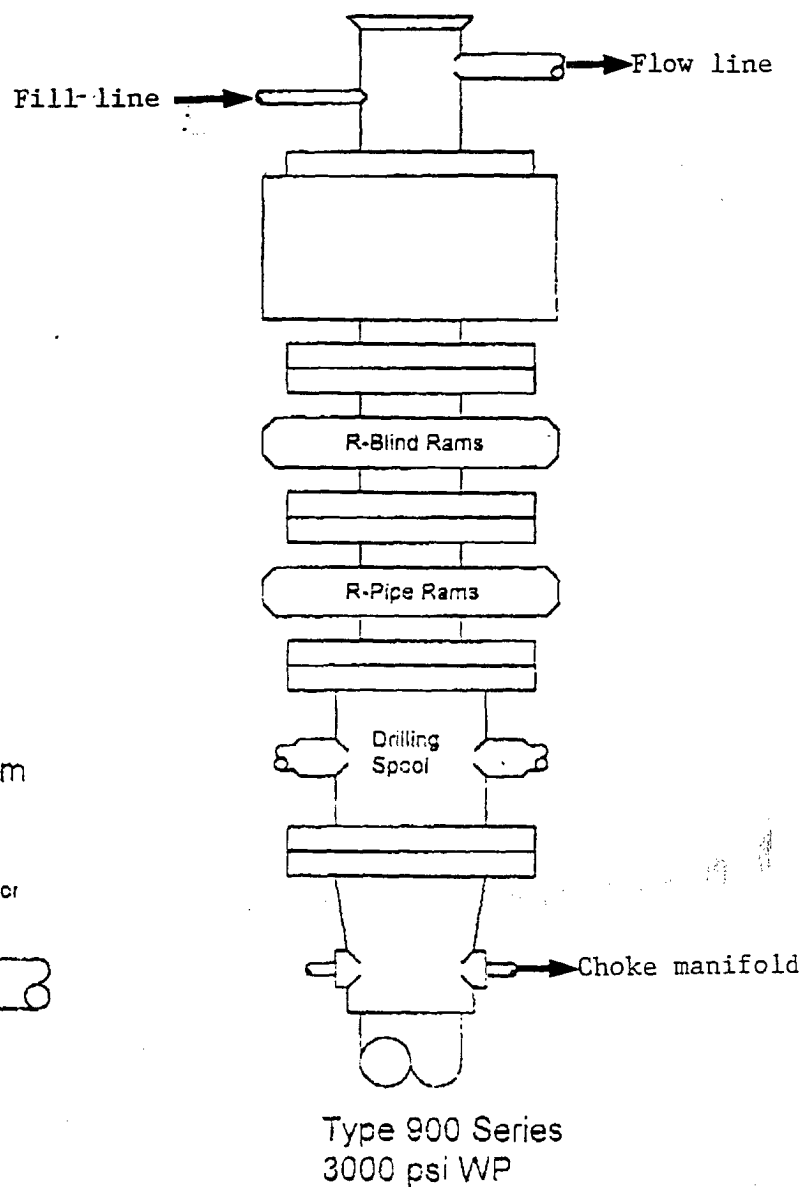
Hole Size
12.25

Hole Size
7.875

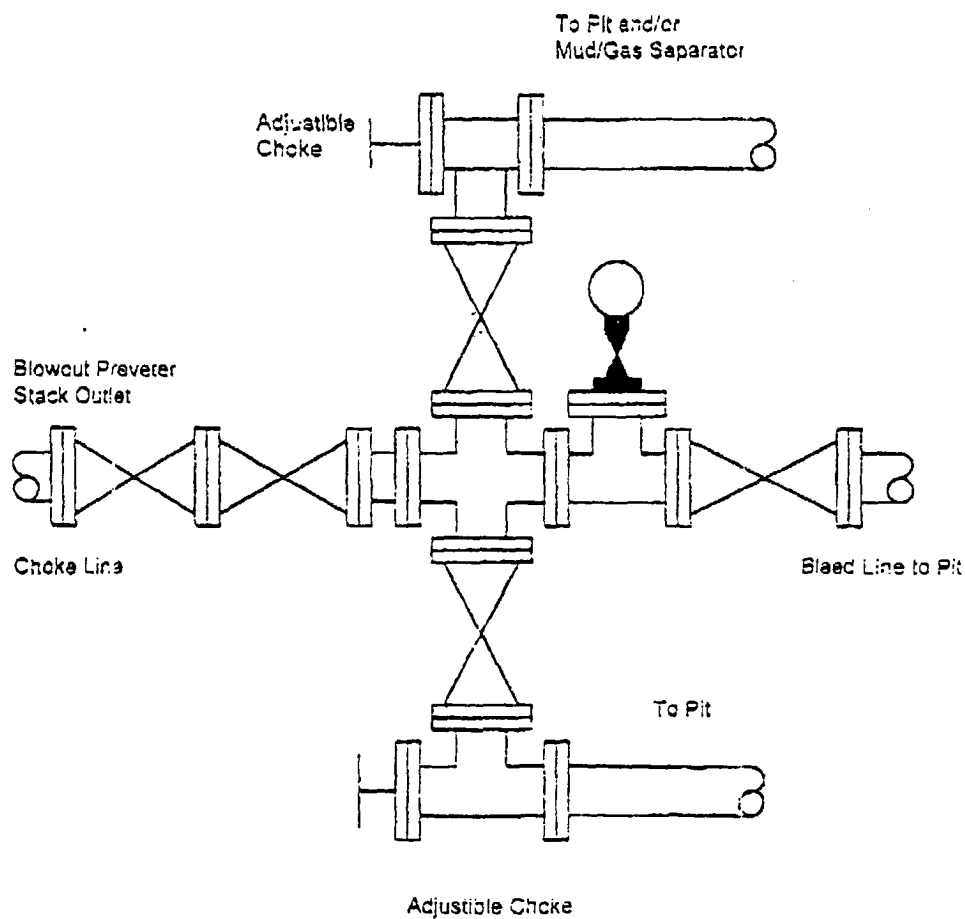
TD @ 10060'



BLOWOUT PREVENTER SYSTEM



Choke Manifold Assembly for 3M WP System



DISTRICT I
1625 N. French Dr., Hobbs, NM 88240

DISTRICT II
811 South First, Artesia, NM 88210

DISTRICT III
1000 Rio Brazos Rd., Aztec, NM 87410

DISTRICT IV
2040 South Pacheco, Santa Fe, NM 87505

State of New Mexico
Energy, Minerals and Natural Resources Department

Form C-102
Revised March 17, 1999

Submit to Appropriate District Office
State Lease - 4 Copies
Fee Lease - 3 Copies

OIL CONSERVATION DIVISION

2040 South Pacheco
Santa Fe, New Mexico 87505

☐ AMENDED REPORT

WELL LOCATION AND ACREAGE DEDICATION PLAT

API Number	Pool Code	Pool Name
		WOLFCAMP - WILDCAT
Property Code	Property Name	Well Number
	NORTH KING CAMP UNIT	12
OGRID No.	Operator Name	Elevation
193407	CONCHO RESOURCES INC.	3754'

Surface Location

UL or lot No.	Section	Township	Range	Lot Idn	Feet from the	North/South line	Feet from the	East/West line	County
E	36	13 S	29 E		1980	NORTH	660	WEST	CHAVES

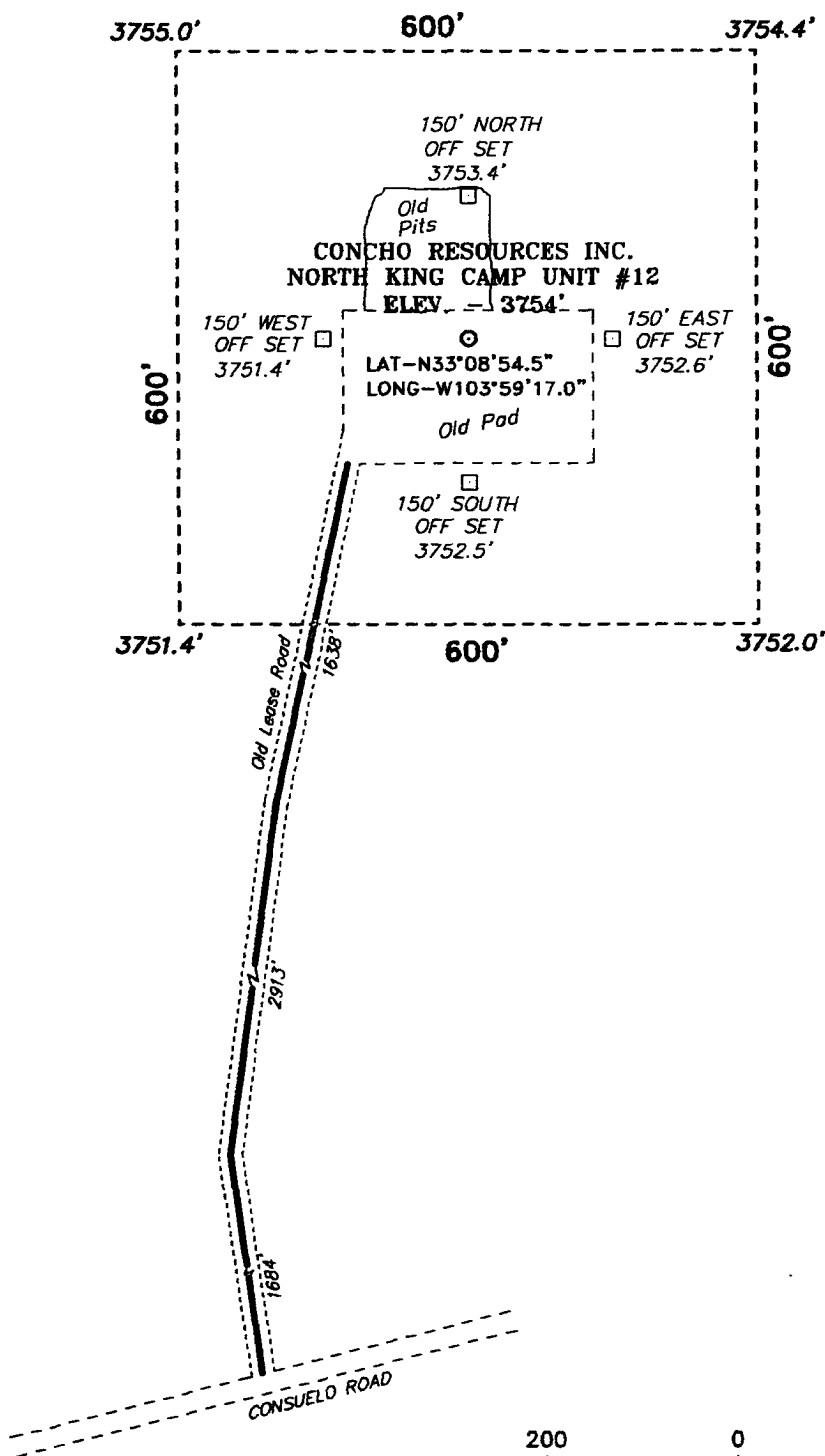
Bottom Hole Location If Different From Surface

UL or lot No.	Section	Township	Range	Lot Idn	Feet from the	North/South line	Feet from the	East/West line	County
Dedicated Acres	Joint or Infill	Consolidation Code	Order No.						
40									

NO ALLOWABLE WILL BE ASSIGNED TO THIS COMPLETION UNTIL ALL INTERESTS HAVE BEEN CONSOLIDATED
OR A NON-STANDARD UNIT HAS BEEN APPROVED BY THE DIVISION

	<p>OPERATOR CERTIFICATION</p> <p>I hereby certify the the information contained herein is true and complete to the best of my knowledge and belief.</p> <p><i>Joe T. Janica</i> Signature</p> <p>Joe T. Janica Printed Name</p> <p>Agent</p> <p>Title</p> <p>11/07/03 Date</p>
	<p>SURVEYOR CERTIFICATION</p> <p>I hereby certify that the well location shown on this plat was plotted from field notes of actual surveys made by me or under my supervision, and that the same is true and correct to the best of my belief.</p> <p>NOVEMBER 3, 2003 Date Surveyed</p> <p><i>Gary L. Jones</i> Signature & Seal of Professional Surveyor</p> <p>7977 W.O. No. 3722</p> <p>Certified No. Gary L. Jones 7977 PROFESSIONAL SURVEYOR</p> <p>BASIN SURVEYS</p>

**SECTION 36, TOWNSHIP 13 SOUTH, RANGE 29 EAST, N.M.P.M.,
CHAVES COUNTY, NEW MEXICO.**



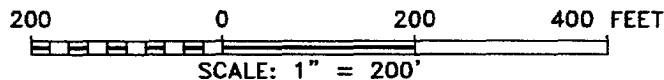
DIRECTIONS TO LOCATION:

FROM THE THE JUNCTION OF CO. RD. 217 (HAGERMAN CUTOFF) & US HWY 82, GO WEST FOR FOR 1.4 MILE TO JEMINA ROAD; THENCE NORTH FOR 1.7 MILE TO TERESA ROAD; THENCE WEST ON TERESA ROAD FOR 0.5 MILE; THENCE NORTH FOR 2.8 MILES TO CONSUELO ROAD; THENCE EAST ON CONSUELO ROAD FOR 2.1 MILES TO OLD LEASE ROAD; THENCE NORTH TO LOCATION.

BASIN SURVEYS P.O. BOX 1786 - HOBBS, NEW MEXICO

W.O. Number: 3722 Drawn By: K. GOAD

Date: 11-05-2003 Disk: KJG CD#4 - 3722A.DWG

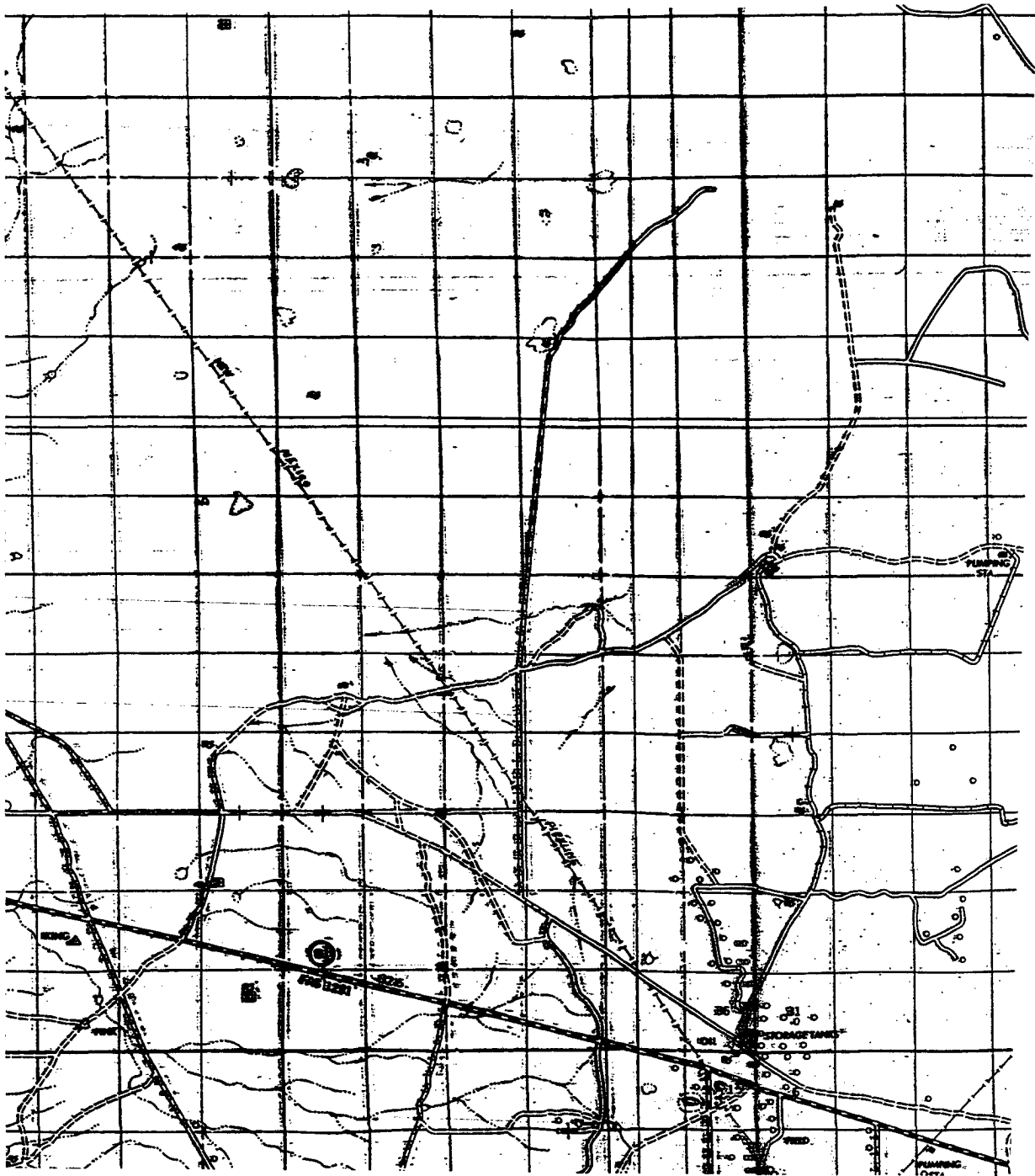


CONCHO RESOURCES INC.

REF: NORTH KING CAMP UNIT No. 12 / Well Pad Topo

THE NORTH KING CAMP UNIT No. 12 LOCATED 1980' FROM THE NORTH LINE AND 660' FROM THE WEST LINE OF SECTION 36, TOWNSHIP 13 SOUTH, RANGE 29 EAST, N.M.P.M., CHAVES COUNTY, NEW MEXICO.

Survey Date: 11-03-2003 Sheet 1 of 1 Sheets



NORTH KING CAMP UNIT #12
 Located at 1980' FNL and 660' FWL
 Section 36, Township 13 South, Range 29 East,
 N.M.P.M., Chaves County, New Mexico.

basin
surveys
 focused on excellence
 in the oilfield

P.O. Box 1786
 1120 N. West County Rd.
 Hobbs, New Mexico 88241
 (505) 393-7316 - Office
 (505) 392-3074 - Fax
 basinsurveys.com

W.O. Number: 3722AA - KJG CD#5

Survey Date: 11-03-2003

Scale: 1" = 2 miles

Date: 11-05-2003

CONCHO
RESOURCES
INC.