

30-015-36727

S

DISTRICT I
1625 N. French Dr., Hobbs, NM 68240
DISTRICT II
1301 W. Grand Avenue, Artesia, NM 88210
DISTRICT III
1000 Rio Brazos Rd., Aztec, NM 87410
DISTRICT IV
1220 S. St. Francis Dr., Santa Fe, NM 87505

OCT 16 2008
State of New Mexico
Energy, Minerals and Natural Resources Department
OCCUPANCY

Form C-102
Revised October 12, 2005

Submit to Appropriate District Office
State Lease - 4 Copies
Fee Lease - 3 Copies

OIL CONSERVATION DIVISION
1220 South St. Francis Dr.
Santa Fe, New Mexico 87505

☐ AMENDED REPORT

WELL LOCATION AND ACREAGE DEDICATION PLAT

API Number	Pool Code 97149	Pool Name Henshaw; Morrow, SW
Property Code	Property Name GRUY LEONARD STATE "36" COM	Well Number 1
OGRID No. 260972	Operator Name GRUY PETROLEUM MANAGEMENT CO., LLC	Elevation 3696'

Surface Location

UL or lot No.	Section	Township	Range	Lot Idn	Feet from the	North/South line	Feet from the	East/West line	County
H	36	16 S	29 E		1800	NORTH	660	EAST	EDDY

Bottom Hole Location If Different From Surface

UL or lot No.	Section	Township	Range	Lot Idn	Feet from the	North/South line	Feet from the	East/West line	County
Dedicated Acres 320	Joint or Infill	Consolidation Code	Order No.						

NO ALLOWABLE WILL BE ASSIGNED TO THIS COMPLETION UNTIL ALL INTERESTS HAVE BEEN CONSOLIDATED
OR A NON-STANDARD UNIT HAS BEEN APPROVED BY THE DIVISION

EO-0785-0004		EO-0785-0004		1800'
EO-0785-0004		SURFACE LOCATION Lat - N32°52'49.33" Long - W104°01'18.37" NMSPEC - N 684153.41 E 636984.69 (NAD-83)		660'
				BQ-2175-0017

OPERATOR CERTIFICATION

I hereby certify that the information contained herein is true and complete to the best of my knowledge and belief, and that this organization either owns a working interest or unleased mineral interest in the land including the proposed bottom hole location pursuant to a contract with an owner of such a mineral or working interest, or to a voluntary pooling agreement or a compulsory pooling order heretofore entered by the division.

Linda Smith 9.15.08
Signature Date

LINDA Smith
Printed Name

SURVEYOR CERTIFICATION

I hereby certify that the well location shown on this plat was plotted from field notes of actual surveys made by me or under my supervision, and that the same is true and correct to the best of my belief.

AUGUST 11, 2008
Date Surveyed

GARY L. JONES
Professional Surveyor

Certificate No. Gary L. Jones 7977

BASIN SURVEYS

✓ R40

Drilling Plan, Casing, Cementing, BOP and Mud Details

Gruy Petroleum Management Co., LLC Gruy Leonard 36 State Com 1

Unit Letter H Section 32
T- 16S R- 29E
Eddy County New Mexico

- 1 Proposed Drilling Plan:
Drill a 17-1/2" hole to 450', run 13-3/8" casing and cement.
Drill a 12-1/4" hole to 3000', run 9-5/8" casing and cement.
Drill a 8-3/4" hole to TD of 11300', log, run 5-1/2" casing and cement.

- 2 Casing, Setting Depth and Cementing:

13-3/8" Surface
In 17-1/2" hole, run 13-3/8", 48#, H-40, STC casing to 450'.
Cement:
Lead of 165 sx Light Premium Plus cement + 1 #/sx Pheno Seal + 1% Calcium Chloride
Tail of 250 sx Premium Plus cement + 2% Calcium Chloride
TOC @ surface

9-5/8" Intermediate
In 12-1/4" hole, run 9-5/8", 40#, J-55, LTC casing to 3000'.
Cement:
Lead of 590 sx Interfill C cement + 1 #/sx Pheno Seal
Tail of 250 sx of Premium Plus Cement + 1% Calcium Chloride
TOC @ surface

5-1/2" Production
In 8-3/4" hole, run 5-1/2", 17#, P-110, LTC casing to 11300'.
Cement:
Lead of 780 sx Interfill H cement + 1 #/sx Phen Seal + 0.1% HR-7 retarder
Tail of 485 sx Super H cement + 0.5% Halad 344 low fluid loss control + 0.25% D-AIR 3000 defoamer
+ 0.4% CFR-3 dispersant + 1 #/sx salt accelerator + 3 #/sx Pheno Seal
TOC @ 2700'

- 3 Pressure control (BOP) details:

A 11" 5000 psi working pressure B.O.P. consisting of one set of blind rams and one set of pipe rams and a 5000 # annular type preventer. A choke manifold and accumulator with floor and remote operating stations and auxiliary power system. Rotating head below 3000'. A kelly cock will be installed and maintained in operable condition and a drill string safety valve in the open position will be available on the rig floor. BOP unit will be hydraulically operated. BOP will be nipped up on the 9 5/8" casing and will be operated at least once a day while drilling and the blind rams will be operated when out of hole during trips. No abnormal pressure or temperature is expected while drilling.

4

Mud Program - Closed Loop System

Depth	Mud Wt	Viscosity	Fluid Loss	Type Mud
0 - 450'	8.4 - 9.2	28 - 34	May lose circ.	Fresh water gel spud mud. Add paper to control seepage. High viscosity sweeps to clean hole.
450' - 3000'	10.0	28 - 29	May lose circ.	Brine Add paper as needed to control seepage and add lime to control pH. Use high viscosity sweeps to clean hole.
3000' - 8700'	9.0 - 9.2	28 - 29	NC	Cut Brine. Add paper for seepage. Control pH. Use high viscosity sweeps as needed to clean hole.
8700' - 11300'	9.0 - 9.5	29 - 45	NC	Cut brine polymer mud. Adjust weight with brine as needed. Maintain pH.. Use high viscosity sweeps as needed to clean hole.

Sufficient mud materials will be kept on location at all times in order to combat lost circulation, or unexpected kicks. In order to run DST's, open hole logs, and casing, the viscosity and water loss may have to be adjusted in order to meet these needs. Mud system monitoring equipment with derrick floor indicators and visual/audio alarms shall be installed and operative prior to drilling into the Wolfcamp formation. This equipment will remain in use until production casing is run and cemented.

SECTION 36, TOWNSHIP 16 SOUTH, RANGE 29 EAST, N.M.P.M.,
EDDY COUNTY, NEW MEXICO.

N

150' NORTH
OFF SET
3696.6'
□

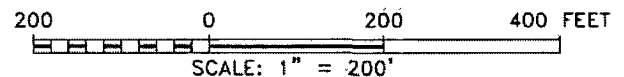
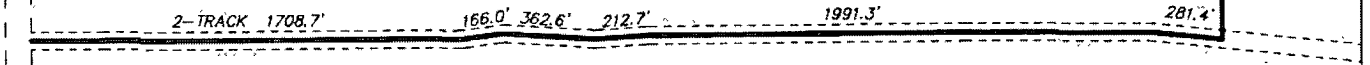
GRUY PETROLEUM MANAGEMENT CO., LLC
GRUY LEONARD STATE "36" COM #1

150' WEST OFF SET □ 3693.4' ELEV. - 3696' 150' EAST OFF SET □ 3697.4'

Lat.-N 32°52'49.33"
Long.-W 104°01'18.37"
(NAD-83)

150' SOUTH
OFF SET
3696.7'

138.4'



Directions to Location:

FROM THE JUNCTION OF HWY 82 AND KEWANEE
(216), GO NORTH ON KEWANEE FOR 3.9 MILES TO
2-TRACK AND PROPOSED LEASE ROAD.

GRUY PETROLEUM MANAGEMENT CO., LLC

REF: GRUY LEONARD STATE "36" COM #1 / WELL PAD TOPO

THE GRUY LEONARD STATE "36" COM #1 LOCATED 1800'

FROM THE NORTH LINE AND 660' FROM THE EAST LINE OF

SECTION 36, TOWNSHIP 16 SOUTH, RANGE 29 EAST,

N.M.P.M., EDDY COUNTY, NEW MEXICO.

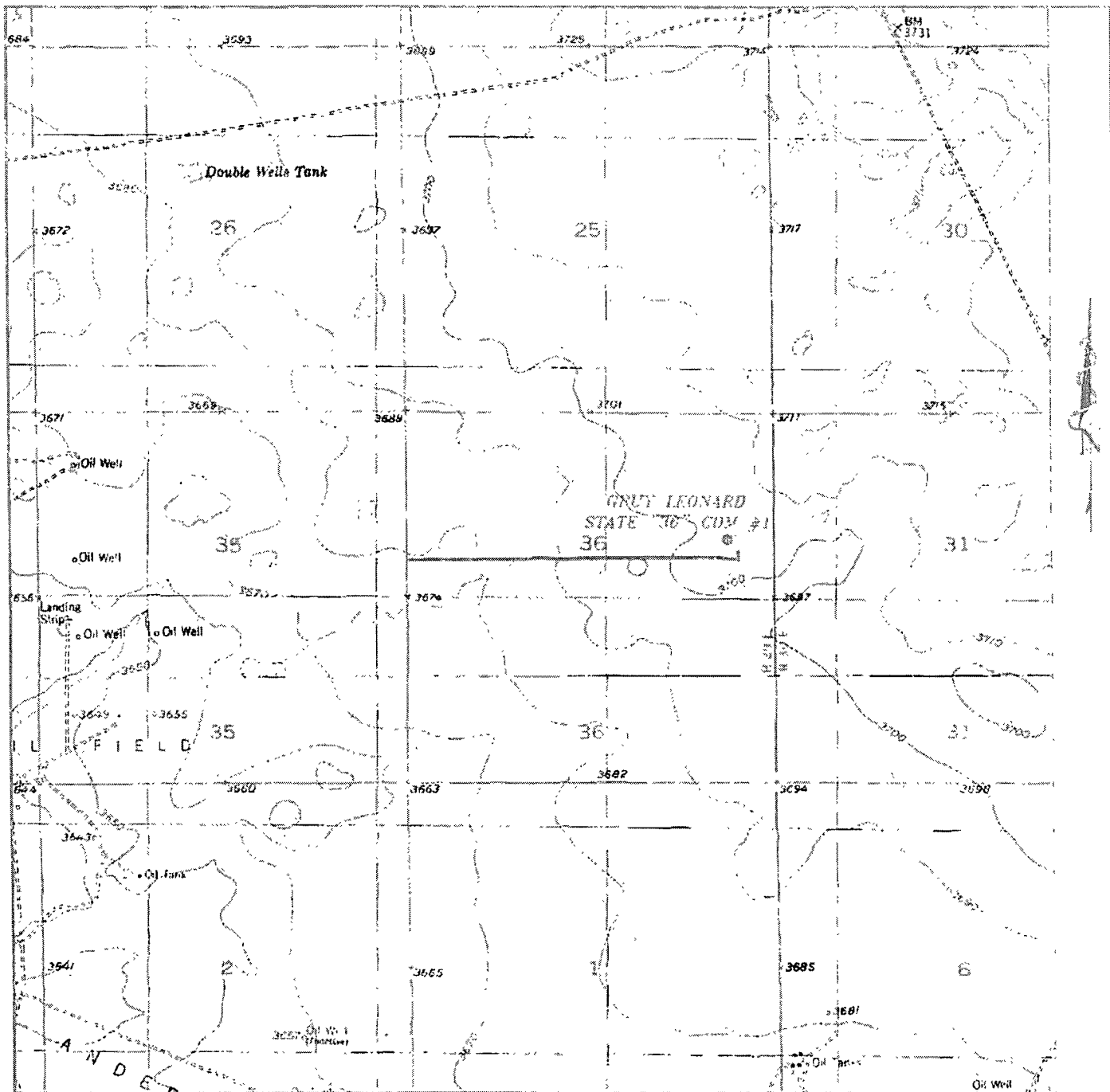
BASTIN SURVEYS P.O. BOX 1786-HOBBS, NEW MEXICO

W.O. Number: 20191 Drawn By: J. SMALL

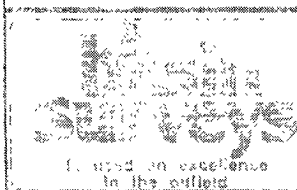
Date: 08-14-2008 Disk: JMS 20191

Survey Date: 08-11-2008

Sheet 1 of 1 Sheets



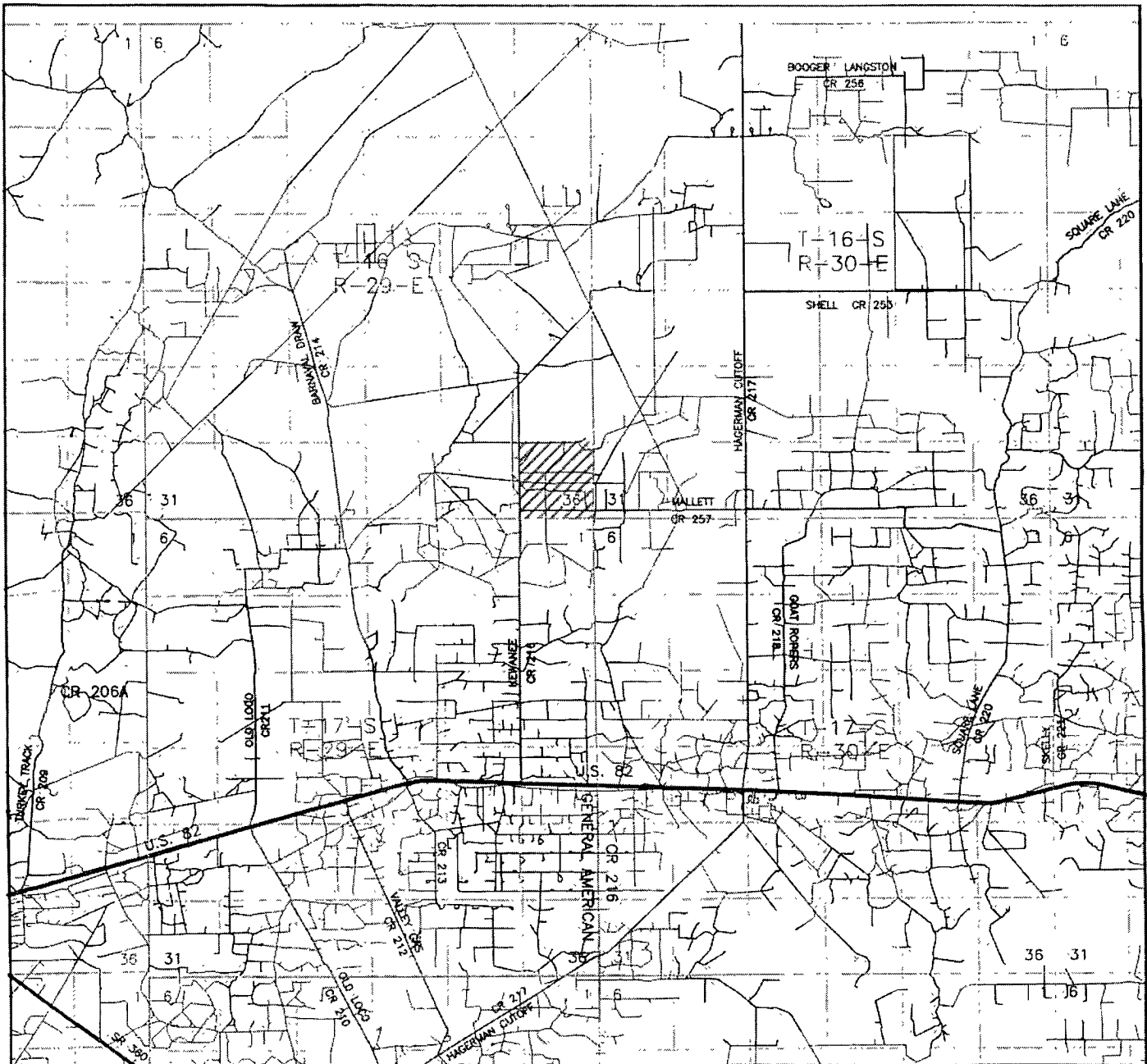
GRUY LEONARD STATE "36" COM #1
 Located 1800' ENL and 660' ENL
 Section 36, Township 16 South, Range 29 East,
 N.M.P.M., Eddy County, New Mexico.



P.O. Box 1785
 1120 N. West County Rd.
 Hobbs, New Mexico 88240
 (505) 390-7016 - Office
 (505) 392-2206 - Fax
 Surveyors.com

W.C. Ruppert, C.E., 20191
 Survey of "36" COM #1
 Date: 2/20/01
 Scale: 1" = 100'

**GRUY PETROLEUM
 MANAGEMENT CO.,
 LLC**



GRUY LEONARD STATE "36" COM #1
 Located 1800' FNL and 660' FEL
 Section 36, Township 16 South, Range 29 East,
 N.M.P.M., Eddy County, New Mexico.

basin
surveys
 focused on excellence
 in the oilfield

P.O. Box 1786
 1120 N. West County Rd.
 Hobbs, New Mexico 88241
 (575) 393-7316 - Office
 (575) 392-2206 - Fax
 basinsurveys.com

W.O. Number: JMS- 20191

Survey Date: 08-11-2008

Scale: 1" = 2 MILES

Date: 08-14-2008

GRUY PETROLEUM
MANAGEMENT CO.,
LLC