

Submit 3 Copies To Appropriate District
 Office
 District I
 1625 N. French Dr., Hobbs, NM 87240
 District II
 1301 W. Grand Ave., Artesia, NM 88210
 District III
 1000 Rio Brazos Rd., Aztec, NM 87410
 District IV
 1220 S. St. Francis Dr., Santa Fe, NM 87505

State of New Mexico
 Energy, Minerals and Natural Resources

Form C-103
 May 27, 2004

OIL CONSERVATION DIVISION
 1220 South St. Francis Dr.
 Santa Fe, NM 87505



WELL API NO. 30-015-01658
5. Indicate Type of Lease STATE <input checked="" type="checkbox"/> FEE <input type="checkbox"/>
6. State Oil & Gas Lease No. 647
7. Lease Name or Unit Agreement Name: Empire Abo Unit "F"
8. Well Number 28
9. OGRID Number 00778
10. Pool name or Wildcat Empire Abo

SUNDRY NOTICES AND REPORTS ON WELLS
 (DO NOT USE THIS FORM FOR PROPOSALS TO DRILL OR TO DEEPEN OR PLUG BACK TO A DIFFERENT RESERVOIR. USE "APPLICATION FOR PERMIT" (FORM C-101) FOR SUCH PROPOSALS.)

1. Type of Well: Oil Well Gas Well Other

2. Name of Operator: BP America Production Company

3. Address of Operator: P.O. Box 1089, Eunice, NM 88231

4. Well Location
 Unit Letter H : 2310 feet from the N line and 330 feet from the E line
 Section 32 Township 17S Range 28E NMPM County Eddy

11. Elevation (Show whether DR, RKB, RT, GR, etc.)
3681' GR

Pit or Below-grade Tank Application or Closure

Pit type _____ Depth to Groundwater _____ Distance from nearest fresh water well _____ Distance from nearest surface water _____

Pit Liner Thickness: _____ mil Below-Grade Tank: Volume _____ bbls; Construction Material _____

OCT 21 2008
 OCD-ARTESIA

12. Check Appropriate Box to Indicate Nature of Notice, Report, or Other Data

NOTICE OF INTENTION TO:

- PERFORM REMEDIAL WORK PLUG AND ABANDON
- TEMPORARILY ABANDON CHANGE PLANS
- PULL OR ALTER CASING MULTIPLE COMPLETION
- OTHER:

SUBSEQUENT REPORT OF:

- REMEDIAL WORK ALTERING CASING
- COMMENCE DRILLING OPNS. PLUG AND ABANDONMENT
- CASING TEST AND CEMENT JOB
- Approval Granted providing work is complete by 1/21/09
- OTHER:

Notify OCD 24 hrs. prior to any work done.

13. Describe proposed or completed operations. (Clearly state all pertinent details, and give pertinent dates, including estimated date of starting any proposed work). SEE RULE 1103. For Multiple Completions: Attach well completion diagram of proposed completion or recompletion.

- MIRU PU. Check tbg, csg and surface pipe for pressure - bleed off into containment. Monitor well and assure it's stable. ND WH and remove tubing joint, install BOP. Test BOP & csg to 500 psi.
- TIH with perforated nipple and bull plug on 2 3/8" work string. Tag CIBP at 6058'. Circulate hole with mud-laden fluid (9.0 ppg, 1250# gel / 100 bbl). Spot 250' cement plug on top of CIBP using 25 sx Class C neat.
- TOH to 3500' (Glorieta top = 3417'). Spot cement plug from 3500' - 3200' using 30 sx Class C + 2% CaCl2. PU to 3000' and WOC 2 hours minimum. Tag plug, re-spot as necessary. Test csg to 500 psi. TOH.

Continued on page 2.

I hereby certify that the information above is true and complete to the best of my knowledge and belief. I further certify that any pit or below-grade tank has been/will be constructed or closed according to NMOCD guidelines , a general permit or an (attached) alternative OCD-approved plan

SIGNATURE Barry C Price TITLE Area Operations Team Lead DATE 10/20/08
 E-mail address: barry.price@bp.com
 Type or print name Barry C. Price Telephone No. 575-394-1648

For State Use Only
 APPROVED BY [Signature] TITLE [Signature] DATE 10/21/08
 Conditions of Approval, if any:

Form C-103
Empire Abo Unit F-28
30-015-01658
Continued from Page 1

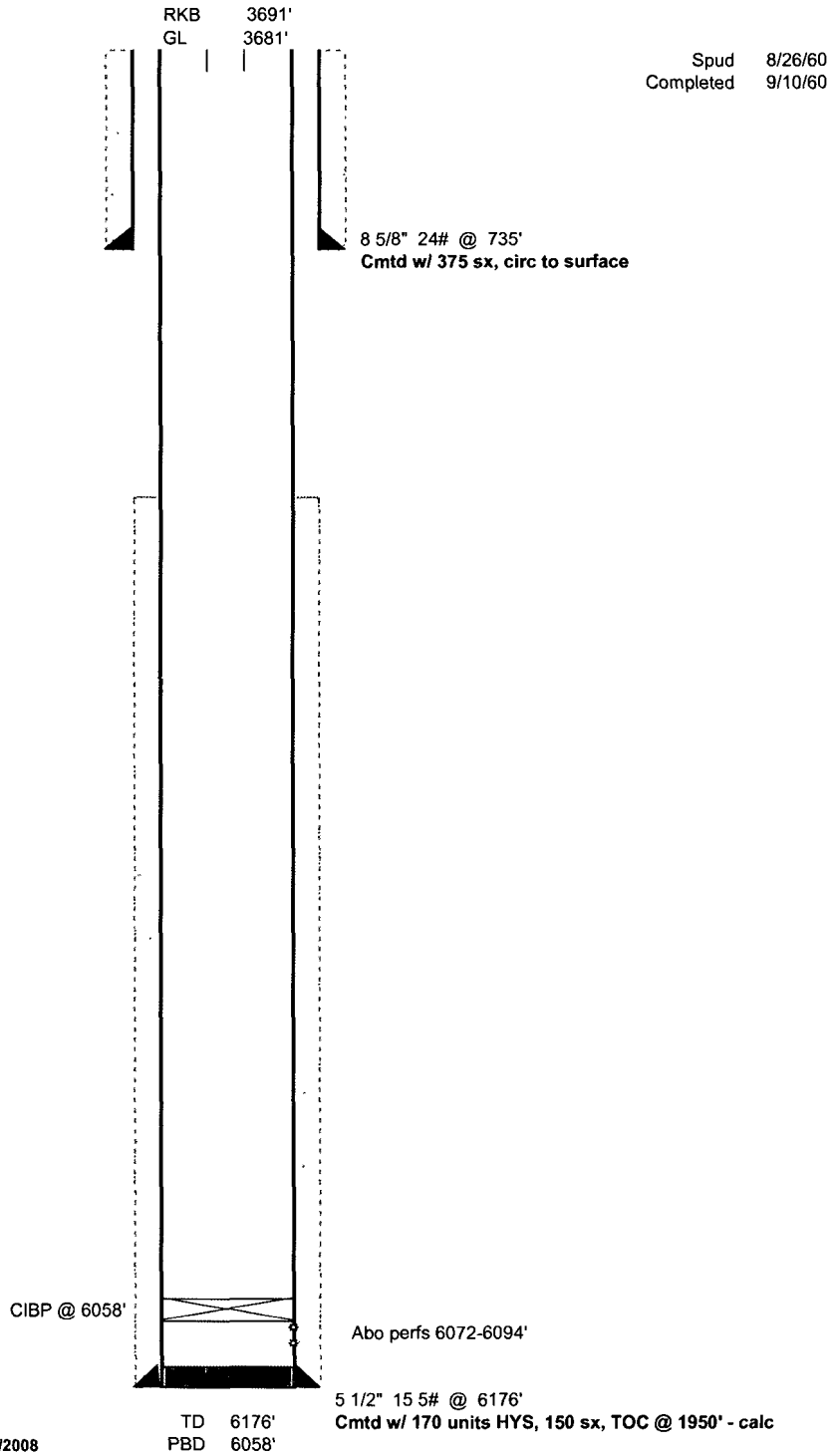
4. RU WL. Perforate 5 1/2" casing at 1220' with 4 squeeze holes. RD WL.
5. TIH with packer and set at 800'. Establish PI rate through perfs at 1300'; monitor 5 1/2" x 8 5/8" annulus for returns. Cement perfs at 1220' (Queen top = 1219') with 60 sx Class C + 2% CaCl₂. Displace cement inside 5 1/2" casing to 1020' (20 sx inside casing). Release packer. TOH LD WS. Test 5 1/2" casing to 500 psi. *Tag*
6. RU WL. Perforate 5 1/2" casing at 785' (8 5/8" surface casing shoe = 735', Yates top = 400'). Pump down 5 1/2" casing and establish circulation through perfs at 785' and out 5 1/2" x 8 5/8" annulus at surface. RD WL.
7. Cement 5 1/2" casing from surface to 785' and 5 1/2" x 8 5/8" annulus from 785' to surface using 200 sx Class C + 2% CaCl₂ (estimated – pump until good cement returns).
8. RD PU and clean location.
9. Dig out WH and cut off casing heads to 3' below GL.
10. Install regulation dry hole marker. Clean location and prepare location for NMOCD inspection.

Empire Abo Unit F-28
Empire Abo Field

API No. 30-015-01658

2310' FNL & 330' FEL
Sec 32 - T17S - R28E
Eddy County, New Mexico

Status 9-18-2008



Empire Abo Unit F-28
 Empire Abo Field
 API No. 30-015-01658
 2310' FNL & 330' FEL
 Sec 32 - T17S - R28E
 Eddy County, New Mexico

Proposed P & A

