

UNITED STATES  
DEPARTMENT OF THE INTERIOR  
BUREAU OF LAND MANAGEMENT

SUBMIT IN TRIPLICATE\*  
(See other instructions on  
reverse side)

N. M. Oil Cons. Division

811 S. 1ST ST.  
Form approved  
ARTESIA, NM 88210-2834

APPLICATION FOR PERMIT TO DRILL OR DEEPEN

RECEIVED

1a. TYPE OF WORK: DRILL ☒ DEEPEN ☐ DEC - 2 2003

b. TYPE OF WELL:  
OIL WELL ☒ GAS WELL ☐ Other ☐ SINGLE ZONE ☐ MULTIPLE ZONE ☐ OCP ARTESIA

2. NAME OF OPERATOR  
DEVON ENERGY CORPORATION (NEVADA)

3. ADDRESS AND TELEPHONE NO.  
20 N. BROADWAY, SUITE 1500, OKC, OK 73102 (405) 235-3611

4. LOCATION OF WELL (Report location clearly and in accordance with any State requirements)\*  
At surface 1980' FNL & 218' FWL, Unit E, Section 22, T23S, R31E, Eddy County, NM  
At top proposed prod. zone (Same) 660'  
R-111-P-POTASH

14. DISTANCE IN MILES AND DIRECTION FROM NEAREST TOWN OR POST OFFICE\*  
35 miles WNW of Jal, New Mexico

15. DISTANCE FROM PROPOSED LOCATION TO NEAREST PROPERTY OR LEASE LINE, FT. 710'  
(Also to nearest drlg. unit line if any)

16. NO. OF ACRES IN LEASE 1240.00  
18. DISTANCE FROM PROPOSED LOCATION\* TO NEAREST WELL, DRILLING, COMPLETED, OR APPLIED FOR, ON THIS LEASE, FT.

19. PROPOSED DEPTH 12,000'  
21. ELEVATIONS (Show whether DF, RT, GR, etc.)  
3388' GR  
CARLSBAD  
CONTROLLED WATER BASIN

22. APPROX. DATE WORK WILL START\*  
First quarter, 1999

23. PROPOSED CASING AND CEMENTING PROGRAM				
SIZE OF HOLE	GRADE, SIZE OF CASING	WEIGHT PER FOOT	SETTING DEPTH	QUANTITY OF CEMENT
17 1/2"	H-40 13 3/8"	48#	850'	500 sx Poz C + 200 sx Class C
12 1/4"	J-55 9 5/8"	40#	4400'	1400 sx Poz C + 200 sx Class C
7 7/8"	L-80 5 1/2"	17# & 20#	12,000'	Stg #1: 250 sx Class H Stg #2: 420 sx Class C

Devon Energy proposes to drill to approximately 12,000' to test the Wolfcamp for commercial quantities of oil. If the Wolfcamp is deemed non-commercial, the wellbore will be plugged and abandoned as per Federal regulations. Programs to adhere to onshore oil and gas regulations are outlined in the following exhibits and attachments.

Drilling Program

Surface Use and Operating Plan

Exhibits #1 = Blowout Prevention Equipment

Exhibit #2 = Location and Elevation Plat

Exhibits #3 = Road Map and Topo Map

Exhibit #4 = Wells Within 1 Mile Radius

Exhibits #5 = Production Facilities Plat

Exhibit #6 = Rotary Rig Layout

Exhibit #7 = Casing Design

Archaeological Clearance Report

The undersigned accepts all applicable terms, conditions, stipulations and restrictions concerning operations conducted on the leased land or portions thereof, as described below

Lease #: NM-NM0405444-A

Legal Description: All of Section 22-T23S-R31E, Eddy Cnty, NM

Bond Coverage: Nationwide

BLM Bond #: CO-1104

APPROVAL SUBJECT TO  
GENERAL REQUIREMENTS AND  
SPECIAL STIPULATIONS ATTACHED

IN ABOVE SPACE DESCRIBE PROPOSED PROGRAM: If proposal is to deepen, give data on present productive zone and proposed new productive zone. If proposal is to drill or deepen directionally, give pertinent data on subsurface locations and measured and true vertical depths. Give blowout preventer program, if any.

SIGNED Candace R. Graham

Candace R. Graham  
TITLE Engineering Technician

DATE January 29, 1999

\*(This space for Federal or State office use)

PERMIT NO. APPROVAL DATE

Application approval does not warrant or certify that the applicant holds legal or equitable title to those rights in the subject lease which would entitle the applicant to conduct operations thereon.

CONDITIONS OF APPROVAL, IF ANY:

APPROVED BY: CARSTER F. Goff TITLE DSD MISC. #15 & LANDS DATE 11-13-03  
See Instructions On Reverse Side APPROVED FOR 1 YEAR

Title 18 U.S.C. Section 1001, makes it a crime for any person knowingly and willfully to make to any department or agency of the United States any false, fictitious or fraudulent statements or representations as to any matter within its jurisdiction

Submit to Appropriate  
District Office  
State Lease - 4 copies  
Fee Lease - 3 copies

State of New Mexico  
Energy, Minerals and Natural Resources Department

Form C-102  
Revised 1-1-89

## OIL CONSERVATION DIVISION

**DISTRICT I**  
P.O. Box 1980, Hobbs, NM 88240

P.O. Box 2088  
Santa Fe, New Mexico 87504-2088

**DISTRICT II**  
P.O. Drawer DD, Artesia, NM 88210

**DISTRICT III**  
1000 Rio Brazos Rd., Aztec, NM 87410

## WELL LOCATION AND ACREAGE DEDICATION PLAT

All Distances must be from the outer boundaries of the section

Operator <b>DEVON ENERGY CORP.</b>			Lease <b>TODD 22-E FEDERAL</b>		Well No. <b>5</b>
Unit Letter <b>E</b>	Section <b>22</b>	Township <b>23 SOUTH</b>	Range <b>31 EAST</b>	County <b>EDDY</b>	
Actual Footage Location of Well: <b>1980</b> feet from the <b>NORTH</b> line and <b>660</b> feet from the <b>WEST</b> line					
Ground Level Elev. <b>3392.0'</b>	Producing Formation <b>Delaware</b>		Pool <b>Ingle Wells Delaware</b>		Dedicated Acreage: <b>40</b> Acres

- Outline the acreage dedicated to the subject well by colored pencil or hatchure marks on the plat below.
- If more than one lease is dedicated to the well, outline each and identify the ownership thereof (both as to working interest and royalty).
- If more than one lease of different ownership is dedicated to the well, have the interest of all owners been consolidated by communitization, unitization, force-pooling, etc.?  
☐ Yes    ☐ No    If answer is "yes" type of consolidation \_\_\_\_\_

If answer is "no" list of owners and tract descriptions which have actually been consolidated. (Use reverse side of this form necessary.)

No allowable will be assigned to the well unit all interests have been consolidated (by communitization, unitization, forced-pooling, otherwise) or until a non-standard unit, eliminating such interest, has been approved by the Division.

## OPERATOR CERTIFICATION

I hereby certify the the information contained herein is true and complete to the best of my knowledge and belief.

Signature

Printed Name

**Charles W. Horsman**

Position

**District Engineer**

**Company Devon Energy Corporation (Nevada)**

Date

**August 3, 1993**

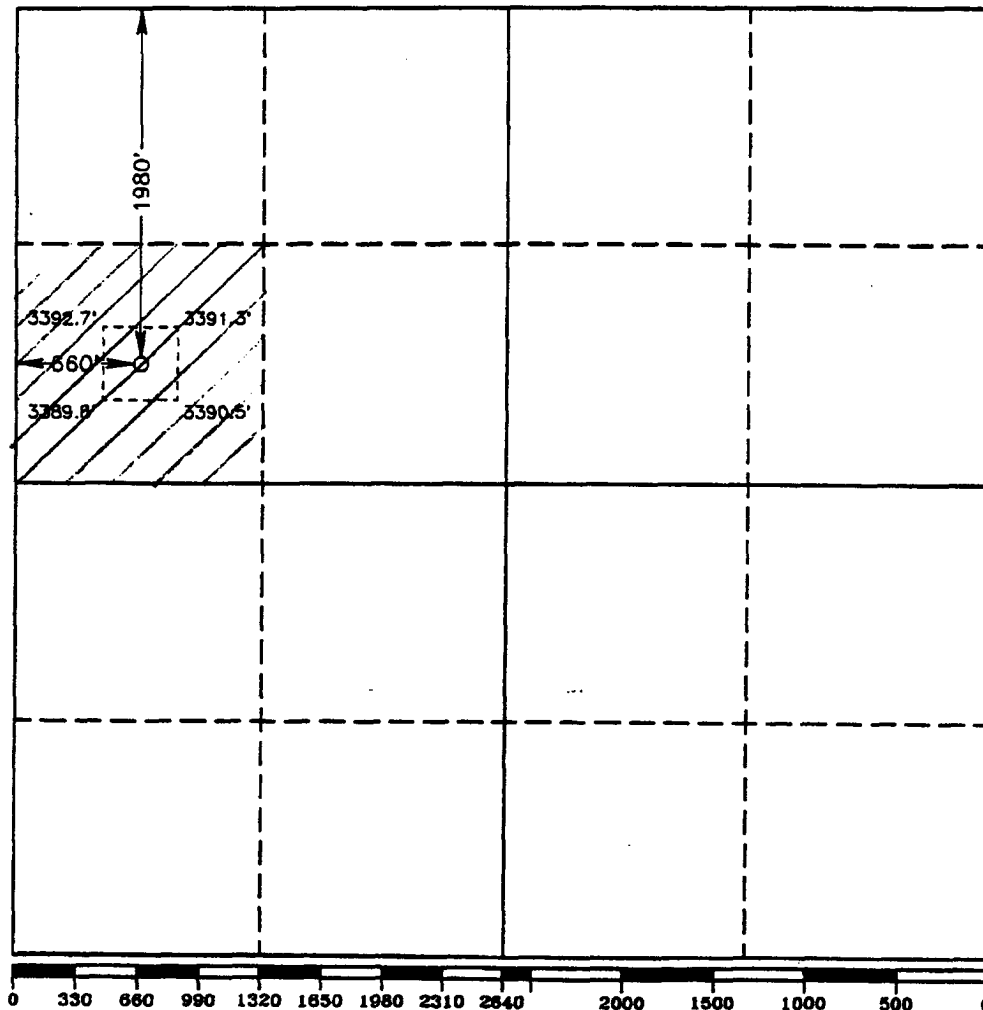
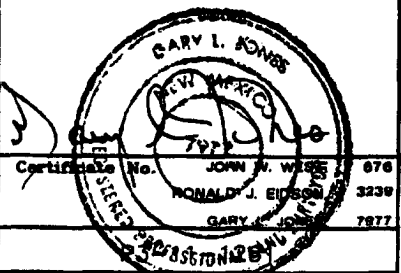
## SURVEYOR CERTIFICATION

I hereby certify that the well location shown on this plat was plotted from field notes of actual surveys made by me or under my supervision, and that the same is true and correct to the best of my knowledge and belief.

Date Surveyed

**JULY 06, 1993**

Signature & Seal of Professional Surveyor



## DRILLING PROGRAM

Attached to Form 3160-3  
Devon Energy Corporation (Nevada)  
TODD "22E" FEDERAL #18  
1980' FNL & 710' FWL  
Section 22-T23S-R31E, Unit E  
Eddy County, New Mexico

1. Geologic Name of Surface Formation

Permian

2. Estimated Tops of Important Geologic Markers

Rustler	800'
Top of Salt	1100'
Base of Salt	3900'
Bell Canyon	4400'
Cherry Canyon	5600'
Brushy Canyon	7000'
Bone Spring Lime	8300'
Third Bone Spring	10700'
Wolfcamp	11600'
Total Depth	12000'

3. Estimated Depths of Possible Fresh Water-, Oil-, or Gas-Bearing Formations

Upper Permian Sands	above 800'	fresh water
Delaware (Bell Canyon)	4400'	oil
Delaware (Cherry Canyon)	6000'	oil
Delaware (Brushy Canyon)	8000'	oil
Third Bone Spring	10700'	oil
Wolfcamp	11600'	oil

No other formations are expected to yield oil, gas or fresh water in measurable volumes. The surface fresh water sands will be protected by setting 13 3/8" casing at 850' and circulating cement back to surface. The Potash and Salt intervals will be protected by setting 9 5/8" casing at 4400' and circulating cement to surface. The lower producing intervals will be isolated by setting 5 1/2" casing to total depth and circulating cement above the base of the 9 5/8" casing.

#### 4. Casing Program

<u>Hole Size</u>	<u>Interval</u>	<u>Casing OD</u>	<u>Weight</u>	<u>Grade</u>	<u>Type</u>
30"	0-40'	20"		Conductor	0.30" wall
17 1/2"	0-850'	13 3/8"	48#	H-40	ST&C, new R-3
12 1/4"	0-4400'	9 5/8"	40#	J-55	ST&C, new R-3
7 7/8"	0'-TD (12,000'±)	5 1/2"	17# & 20#	L-80	LT&C, new R-3

#### Cementing Program

20" Conductor Casing	Cement with Ready-mix to surface.
13 3/8" Surface Casing	Cement to surface using 500 sx Poz (35% Poz, 65% Class C) with 6% Bentonite, 2% CaCl <sub>2</sub> and 1/4 lb/sx Cellophane flakes + 200 sx Class C with 2% CaCl <sub>2</sub> and 1/4 lb/sx Cellophane flakes.
9 5/8" Intermediate Casing	Cement to surface using 1400 sx Poz (35% Poz, 65% Class C) with 6% Bentonite, 3% NaCl <sub>2</sub> and 1/4 lb/sx Cellophane flakes + 200 sx Class C with 2% CaCl <sub>2</sub> and 1/4 lb/sx Cellophane flakes.
5 1/2" Production Casing with DV tool at ±5500'	Cement 1 <sup>st</sup> stage with 250 sx Class H with 12lbs/sx BA-0, 2#/sx NaCl <sub>2</sub> , 0.5% FL-52, 0.25% CD-32 and 1/4 lb/sx Cellophane flakes. Cement 2 <sup>nd</sup> stage with 420 sks Class C with 4% Bentonite, 6.5% NaCl <sub>2</sub> and 1/4 lb/sx Cellophane flakes.

The above cement volumes could be revised pending the caliper measurement from the open hole logs. The top of cement is designed to reach 450'± above the 9 5/8" casing seat at 4400'.

#### 5. Minimum Specifications for Pressure Control

The blowout preventer equipment (BOP) shown in Exhibit #1 will consist of a (3M system) double ram type (2000 psi WP) preventer and a bag-type (Hydril) preventer (2000 psi WP). Both units will be hydraulically operated and the ram type preventer will be equipped with blind rams on top and 4 1/2" drill pipe rams on bottom. Both BOP's will be installed on the 13 3/8" surface casing and utilized continuously until total depth is reached. All BOP's and associated equipment will be tested to 1200 psi before drilling

out the 13 3/8" casing shoe (70% of 48# H-40 casing). Prior to drilling out the 9 5/8" casing shoe, the BOP's and Hydril will be function tested as per BLM drilling Operations Order #2.

Pipe rams will be operated and checked each 24 hour period and each time the drill pipe is out of the hole. These functional tests will be documented on the daily drillers log. A 2" kill line and 3" choke line will be incorporated in the drilling spool below the ram-type BOP. Other accessory BOP equipment will include a kelly cock, floor safety valve, choke lines and choke manifold having 3000 psi WP rating.

6. Types and Characteristics of the Proposed Mud System

The well will be drilled to total depth using brine, cut brine and polymer mud systems. Depths of systems are as follows.

<u>Depth</u>	<u>Type</u>	<u>Weight (ppg)</u>	<u>Viscosity (1/sec)</u>	<u>Water Loss (cc/30 mins)</u>
0-850'	Fresh water	8.8	34-36	No control
850-4400'	Brine water	10.0	28	No control
4400'-TD	Brine water polymer	10.0	32-36	10-20

The necessary mud products for weight addition and fluid loss control will be on location at all times.

7. Auxiliary Well Control and Monitoring Equipment

- A. A kelly cock will be in the drill string at all times.
- B. A full opening drill pipe stabbing valve having the appropriate connections will be on the rig floor at all times.
- C. Hydrogen Sulfide detection equipment (Compliance Package) will be in operation from drilling out the 9 5/8" casing shoe until the 5 1/2" casing is cemented.

8. Logging, Testing and Coring Program

A. Drill stem tests will be based on geological sample shows.

B. The open hole wireline logging program will be as follows.

TD to intermediate casing: Induction / Gamma Ray / Neutron / Density Log.

TD to surface: Neutron with Gamma Ray.

C. Rotary sidewall cores will be based on geological sample shows.

D. Additional testing will be initiated subsequent to setting the 5 1/2" production casing. Specific intervals will be targeted based on geological sample shows, drill stem tests log evaluation and core analysis.

9. Abnormal Pressures, Temperatures and Potential Hazards

No abnormal pressures or temperatures are foreseen. The anticipated bottom hole temperature at total depth is approximately 175 degrees and maximum bottom hole pressure is approximately 3500 psig. No hydrogen sulfide gas has been reported or is known to exist at these depths in this area. No major lost circulation intervals have been encountered in adjacent wells.

10. Anticipated Starting Date and Duration of Operations

A Cultural Resources Examination will be completed by Don Clifton Archaeological Consultant and submitted to the BLM. Road and location preparation will not be undertaken until approval has been received from the BLM. If approved, the anticipated spud date for the well will be in the first quarter, 1999. The drilling operation should require approximately 21 days. If the well is deemed productive, completion operations will require, at minimum, an additional 30 days of testing to ascertain whether permanent production facilities will be constructed.

## **SURFACE USE AND OPERATING PLAN**

Attachment to Form 3160-3  
Devon Energy Corporation (Nevada)  
TODD "22E" FEDERAL #18  
1980' FNL & 710' FWL  
Section 22-T23S-R31E, Unit E  
Eddy County, New Mexico

### **1. Existing Roads**

- A. This location will be staked by John West Surveying, Co. of Hobbs, New Mexico and the well site and elevation plat for the proposed TODD "22E" FEDERAL #18 will be submitted as Exhibit #2.
- B. All roads into the location are depicted in Exhibit #3. New construction from the County road will be used to access the location. New construction will conform to the specifications outlined in item 2 below.
- C. Directions to location: Travel west-northwest from Jal, NM approximately 35 miles on State Highway 128 to County Road 798, just into Eddy County from Lea County, thence north approximately 4 miles on paved county road County Road 798, turn west (left) onto existing lease road (passing Todd "23A" Federal #9). Then go approximately 0.6 mile to the Todd "22A" Federal #1, turn south (left) and go approximately 0.1 mile to the Todd "22H" Federal #8. Turn west (right) and go approximately 0.3 mile (passing Todd "22G" Federal #7) to the Todd "22E" Federal #5 well pad and the proposed TODD "22E" FEDERAL #18 location.

### **2. Proposed Access Road**

Exhibit #3 shows the existing entry road to the proposed TODD "22E" FEDERAL #18 location. If necessary any additional road construction will be as follows.

- A. The maximum width of the road will be fifteen (15) feet.
- B. It will be crowned and made of six (6) inches of rolled and compacted caliche. Water will be deflected, as necessary, to avoid accumulation and prevent surface erosion.
- C. Surface material will be native caliche. This material will be obtained from a BLM approved pit nearest in proximity to the location.

- D. The average grade will be approximately 1%.
- E. No cattle guards, grates or fence cuts will be required.
- F. No turnouts are planned.

3. Location of Existing Wells

Exhibit #4 shows all existing & proposed wells within a one-mile radius of the proposed TODD "22E" FEDERAL #18.

4. Location of Existing and/or Proposed Facilities

- A. Devon Energy Corporation (Nevada) will build the tank battery on the Todd "22G" Federal #7 location in the SW NE of Section 22.
- B. In the event the TODD "22E" FEDERAL #18 is found productive, the production equipment will be as follows.
  - 1. Exhibit #5 shows the battery facility to be utilized by the TODD "22E" FEDERAL #18. This facility may be upgraded to include one or two additional 500 barrel tanks.
  - 2. The tank battery, all connections and all lines will adhere to API standards.
  - 3. The well will be operated by means of an electric prime mover. Power poles will be set along the access road right-of-way.
- C. If the well is productive, rehabilitation plans are as follows.
  - a) The reserve pit will be back-filled after the contents of the pit are dry (within 120 days after completion, weather permitting).
  - b) Caliche from unused portions of the drill pad will be removed. The original top soil from the well site will be returned to the location. The drill site will then be contoured to the original natural state.



5. Location and Type of Water Supply

The TODD "22E" FEDERAL #18 will be drilled using a combination of brine and fresh water mud systems (outlined in Drilling Program). The water will be obtained from commercial water stations in the area and hauled to location by transport truck using the existing and proposed roads shown in Exhibit #3. Additionally, produced salt water from lease gathering tanks may be utilized. No water well will be drilled on the location.

6. Source of Construction Materials

All caliche utilized for the drilling pad and proposed access road will be obtained from an existing BLM approved pit or from prevailing deposits found under the location. All roads will be constructed of 6" rolled and compacted caliche.

7. Methods of Handling Water Disposal

- A. Drill cuttings will be disposed into the reserve pit.
- B. Drilling fluids will be contained in steel mud tanks. The reserve pit will contain excess drilling fluid or fluid from the well during drilling, cementing and completion operations. The reserve pit will be an earthen pit roughly 125' x 125' x 6', or smaller, in size.
- C. The reserve pit will be fenced on three sides throughout drilling operations and will be totally isolated upon removal of the rotary rig. The pit will be lined using a 5-7 mil plastic to minimize loss of drilling fluids and saturation of the ground with brine water used to drill from 850' to 4400'.
- D. Water produced from the well during completion operations will be disposed into a steel tank or reserve pit, if volumes prove excessive. After placing the well on production through the production facilities, all water will be collected in tanks. Produced oil will be separated into steel stock tanks until sold.
- E. A portable chemical toilet will be available on the location for human waste during the drilling operations.

- F. Garbage, trash and waste paper produced during drilling operations will be collected in a contained trailer and disposed at an approved landfill. All waste material will be contained to prevent scattering by the wind. All water, fluids, salt or other chemicals will be disposed into the reserve pit. No toxic waste or hazardous chemicals will be generated by this operation.
- G. All waste material will be removed within 30 days after the well is either completed or abandoned. The reserve pit will be completely fenced until it has dried. At the point the reserve pit is found sufficiently dry, it will be backfilled and reclaimed as per BLM specifications. Only the portion of the drilling pad used by the production equipment (pumping unit and tank battery) will remain in use. If the well is deemed non-commercial, only a dry hole marker will remain.

8. Ancillary Facilities

No campsite or other facilities will be constructed as a result of this well.

9. Well Site Layout

- A. The drill pad is shown on Exhibit #6. Approximate dimensions of the pad, pits and general location of the rig equipment are displayed. Top soil will be stored adjacent to the pad until reclamation efforts are undertaken. Only modest cuts will be necessary to build the pad which will be covered with 6" of compacted caliche.
- B. No permanent living facilities are planned, but temporary trailers for the tool pusher, drilling foreman and mud logger may be on location throughout drilling operations.
- C. The reserve pit will be lined using plastic sheeting of 5-7 mil thickness.

10. Plans for Restoration of Surface

- A. After concluding the drilling and/or completion operations, if the well is found non-commercial, the caliche will be removed from the pad and transported to the original caliche pit or used for other drilling locations. The road will be reclaimed as directed

by the BLM. The reserve pit area will be broken out and leveled after drying to a condition where these efforts are feasible. The original top soil will again be returned to the pad and contoured, as close as possible, to the original topography.

- B. The pit lining will be buried or hauled away in order to return the location and road to their pristine nature. All pits will be filled and location leveled, weather permitting, within 120 days after abandonment.
- C. The location and road will be rehabilitated as recommended by the BLM.
- D. The reserve pit will be fenced on three sides throughout drilling operations. After the rotary rig is removed, the reserve pit will be fenced on the fourth side to preclude endangering wildlife. The fencing will be in place until the pit is reclaimed.
- E. If the well is deemed commercially productive, the reserve pit will be restored as described in 10 (A) within 120 days subsequent to the completion date. Caliche from areas of the pad site not required for operations will be reclaimed. The original top soil will be returned to the area of the drill pad not necessary to operate the well. These unused areas of the drill pad will be contoured, as close as possible, to match the original topography.

11. Surface Ownership

The well site is owned by the Bureau of Land Management.

Road routes have been approved and the surface location will be restored as directed by the BLM.

12. Other Information

- A. The area surrounding the well site is grassland. The top soil is very sandy in nature. The vegetation is moderately sparse with native prairie grass, sagebrush, yucca and miscellaneous weeds.
- B. There is no permanent or live water in the general proximity of the location.

C. A Cultural Resources Examination will be completed by Don Clifton Archaeological Consultant, and a copy forwarded to the BLM office in Carlsbad, New Mexico.

13. Lessee's and Operator's Representative

The Devon Energy Corporation (Nevada) representatives responsible for ensuring compliance of the surface use plan are as follows.

Walter Frank  
District Engineer

Daryl Lowder  
Superintendent

DEVON ENERGY CORPORATION  
20 North Broadway, Suite 1500  
Oklahoma City, OK 73102-8260

DEVON ENERGY CORPORATION  
P. O. Box 250  
Artesia, NM 88211-0250

(405) 552-4595 (office)  
(405) 364-3504 (home)

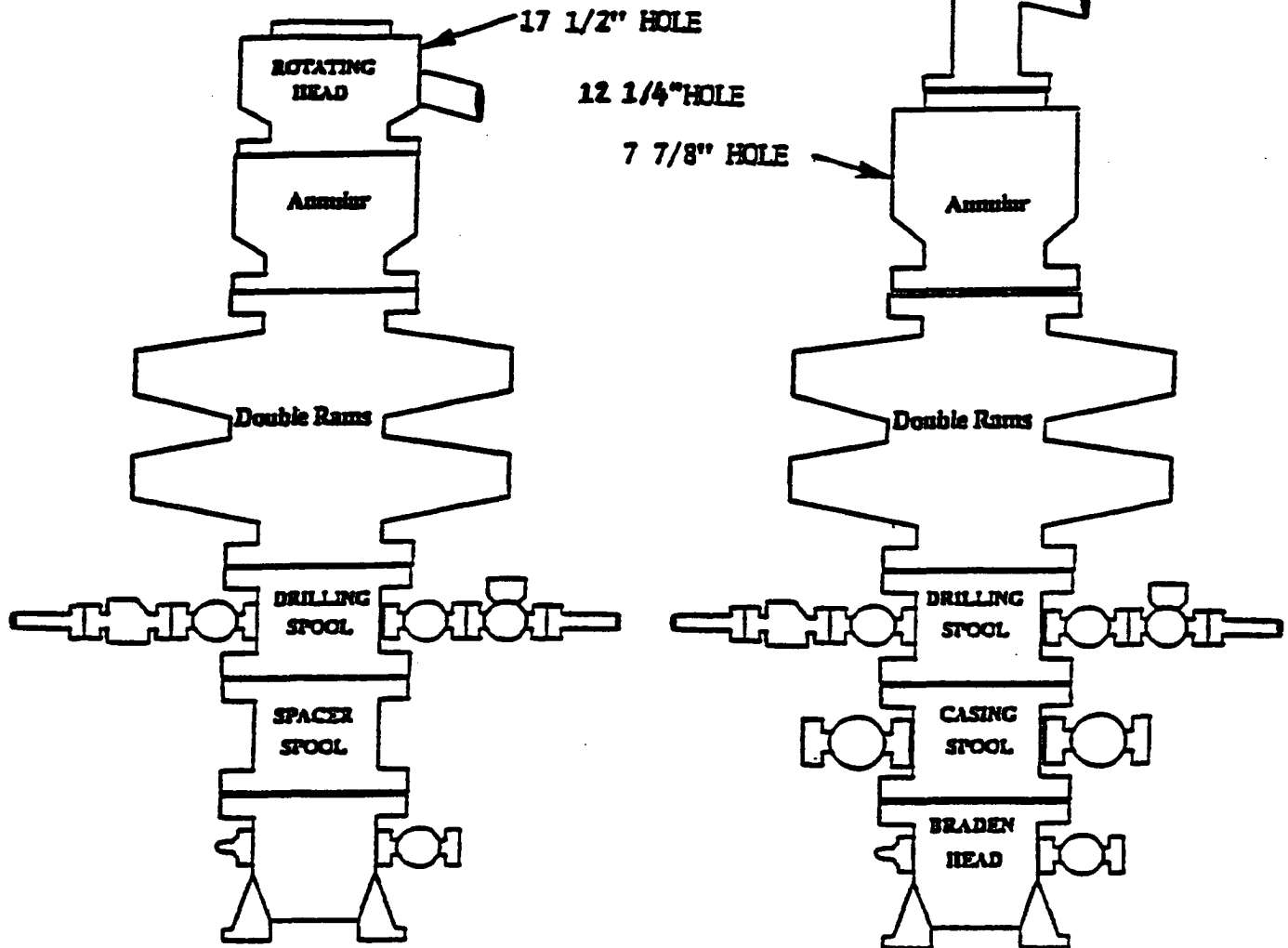
(505) 748-3371 (office)  
(505) 746-9280 (home)

Certification

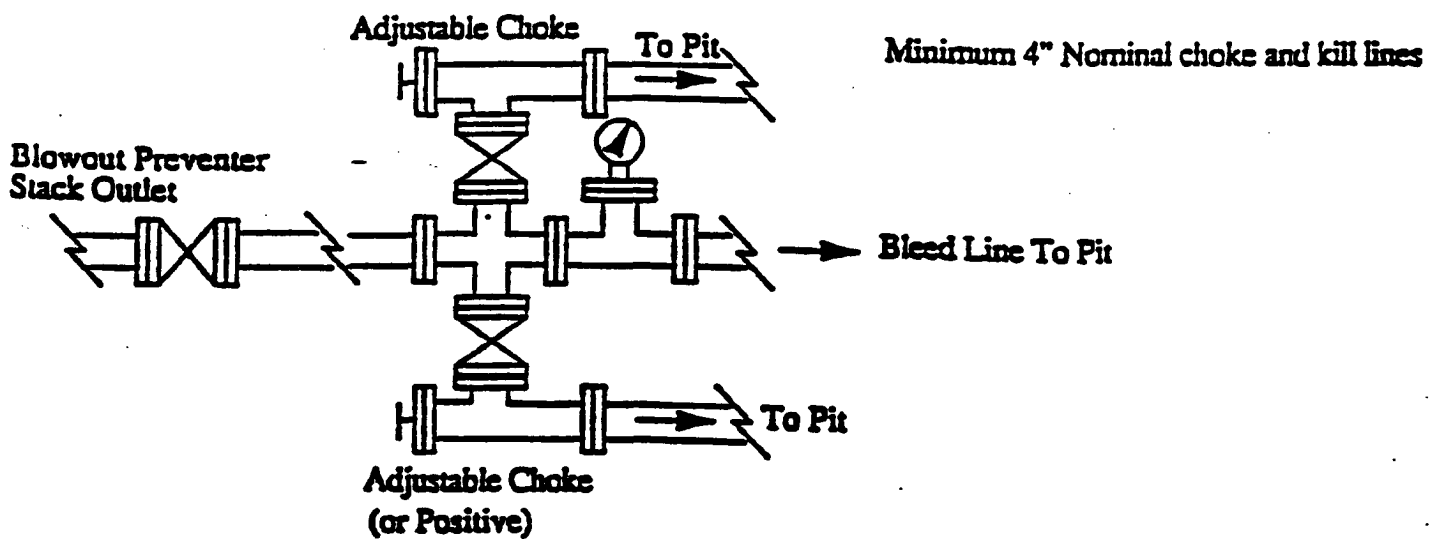
I hereby certify that I, or persons under my direct supervision, have inspected the proposed drill site and access road; that I am familiar with the conditions that presently exist; that the statements made in this plan are, to the best of my knowledge, true and correct; and that the work associated with the operations proposed herein will be performed by Devon Energy Corporation (Nevada) and its contractors and subcontractors in conformity with this plan and the terms and conditions under which it is approved.

Signed: Candace R. Graham  
Candace R. Graham  
Engineering Technician

Date: 01-29-1999



Choke Manifold Requirement (3000 psi WP)



# MINIMUM BLOWOUT PREVENTER REQUIREMENTS

3,000 psi Working Pressure

3 MWP

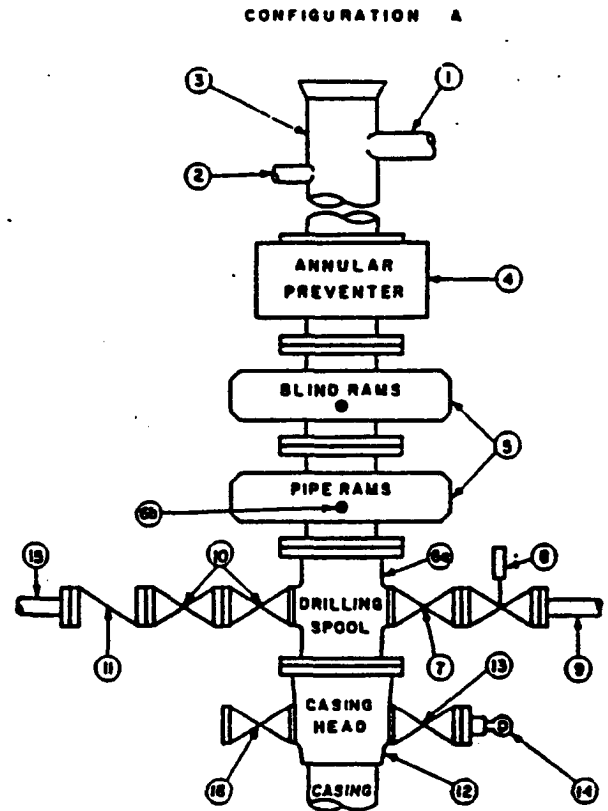
EXHIBIT # 1 ..

## STACK REQUIREMENTS

No.	Item	Min. I.D.	Min. Nominal
1	Flowline		
2	Fill up line		2"
3	Drilling nipple		
4	Annular preventer		
5	Two single or one dual hydraulically operated rams		
6a	Drilling spool with 2" min. kill line and 3" min choke line outlets		
6b	2" min. kill line and 3" min. choke line outlets in ram. (Alternate to 6a above.)		
7	Valve Gate <input type="checkbox"/> Plug <input type="checkbox"/>	3-1/8"	
8	Gate valve—power operated	3-1/8"	
9	Line to choke manifold		3"
10	Valves Gate <input type="checkbox"/> Plug <input type="checkbox"/>	2-1/16"	
11	Check valve	2-1/16"	
12	Casing head		
13	Valve Gate <input type="checkbox"/> Plug <input type="checkbox"/>	1-13/16"	
14	Pressure gauge with needle valve		
15	Kill line to rig mud pump manifold		2"

## OPTIONAL

16	Flanged valve	1-13/16"	
----	---------------	----------	--



## CONTRACTOR'S OPTION TO FURNISH:

1. All equipment and connections above bradenhead or casinghead. Working pressure of preventers to be 3,000 psi, minimum.
2. Automatic accumulator (80 gallon, minimum) capable of closing BOP in 30 seconds or less and, holding them closed against full rated working pressure.
3. BOP controls, to be located near drillers position.
4. Kelly equipped with Kelly cock.
5. Inside blowout preventer or its equivalent on derrick floor at all times with proper threads to fit pipe being used.
6. Kelly saver-sub equipped with rubber casing protector at all times.
7. Plug type blowout preventer tester.
8. Extra set pipe rams to fit drill pipe in use on location at all times.
9. Type RX ring gaskets in place of Type R.

## MEC TO FURNISH:

1. Bradenhead or casinghead and side valves.
2. Wear bushing, if required.

## GENERAL NOTES:

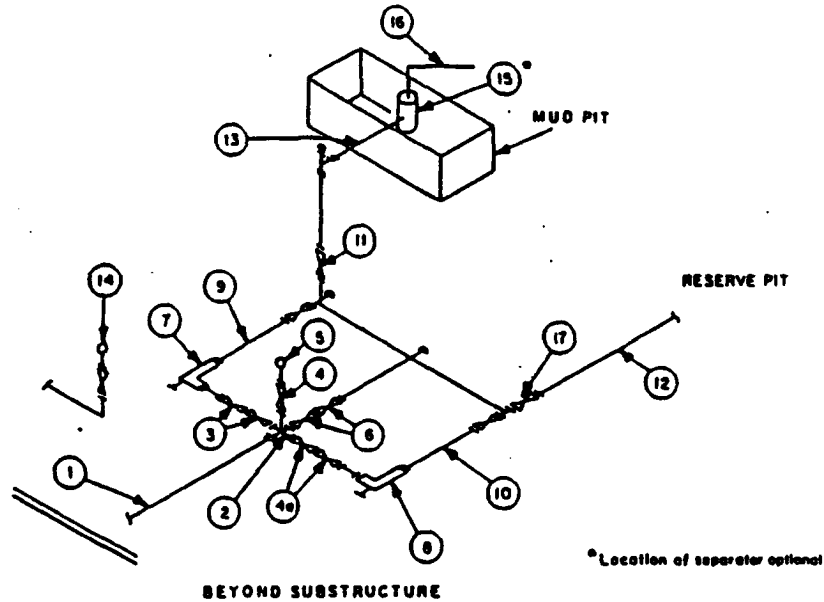
1. Deviations from this drawing may be made only with the express permission of MEC's Drilling Manager.
2. All connections, valves, fittings, piping, etc., subject to well or pump pressure must be flanged (suitable clamp connections acceptable) and have minimum working pressure equal to rated working pressure of preventers up through choke. Valves must be full opening and suitable for high pressure mud service.
3. Controls to be of standard design and each marked, showing opening and closing position.
4. Chokes will be positioned so as not to hamper or delay changing of choke beans. Replaceable parts for adjustable choke, other bean sizes, retainers, and choke wrenches to be conveniently located for immediate use.
5. All valves to be equipped with handwheels or handles ready for immediate use.
6. Choke lines must be suitably anchored.

7. Handwheels and extensions to be connected and ready for use.
8. Valves adjacent to drilling spool to be kept open. Use outside valves except for emergency.
9. All seamless steel control piping (3000 psi working pressure) to have flexible joints to avoid stress. Hoses will be permitted.
10. Casinghead connections shall not be used except in case of emergency.
11. Do not use kill line for routine fill-up operations.

**MINIMUM CHOKE MANIFOLD**  
3,000, 5,000 and 10,000 PSI Working Pressure

3 MWP · 5 MWP · 10 MWP

EXHIBIT # 1



MINIMUM REQUIREMENTS										
No.		3,000 MWP			5,000 MWP			10,000 MWP		
		I.D.	NOMINAL	RATING	I.D.	NOMINAL	RATING	I.D.	NOMINAL	RATING
1	Line from drilling spool		3"	3,000		3"	5,000		3"	10,000
2	Cross 3"x3"x3"x2"			3,000			5,000			
	Cross 3"x3"x3"x3"									10,000
3	Valves (1) Gate <input type="checkbox"/> Plug <input type="checkbox"/> (2)	3-1/8"		3,000	3-1/8"		5,000	3-1/8"		10,000
4	Valve Gate <input type="checkbox"/> Plug <input type="checkbox"/> (2)	1-13/16"		3,000	1-13/16"		5,000	1-13/16"		10,000
4a	Valves (1)	2-1/16"		3,000	2-1/16"		5,000	3-1/8"		10,000
5	Pressure Gauge			3,000			5,000			10,000
6	Valves Gate <input type="checkbox"/> Plug <input type="checkbox"/> (2)	3-1/8"		3,000	3-1/8"		5,000	3-1/8"		10,000
7	Adjustable Choke (3)	2"		3,000	2"		5,000	2"		10,000
8	Adjustable Choke	1"		3,000	1"		5,000	2"		10,000
9	Line		3"	3,000		3"	5,000		3"	10,000
10	Line		2"	3,000		2"	5,000		3"	10,000
11	Valves Gate <input type="checkbox"/> Plug <input type="checkbox"/> (2)	3-1/8"		3,000	3-1/8"		5,000	3-1/8"		10,000
12	Lines		3"	1,000		3"	1,000		3"	2,000
13	Lines		3"	1,000		3"	1,000		3"	2,000
14	Remote reading compound standpipe pressure gauge			3,000			5,000			10,000
15	Gas Separator		2'x5'			2'x5'			2'x5'	
16	Line		4"	1,000		4"	1,000		4"	2,000
17	Valves Gate <input type="checkbox"/> Plug <input type="checkbox"/> (2)	3-1/8"		3,000	3-1/8"		5,000	3-1/8"		10,000

(1) Only one required in Class 3M.

(2) Gate valves only shall be used for Class 10M.

(3) Remote operated hydraulic choke required on 5,000 psi and 10,000 psi for drilling.

**EQUIPMENT SPECIFICATIONS AND INSTALLATION INSTRUCTIONS**

- All connections in choke manifold shall be welded, studded, flanged or Cameron clamp of comparable rating.
- All flanges shall be API 6B or 6BX and ring gaskets shall be API RX or BX. Use only BX for 10 MWP.
- All lines shall be securely anchored.
- Chokes shall be equipped with tungsten carbide seats and needles, and replacements shall be available.
- Choke manifold pressure and standpipe pressure gauges shall be available at the choke manifold to assist in regulating chokes. As an alternate with automatic chokes, a choke manifold pressure gauge shall be located on the rig floor in conjunction with the standpipe pressure gauge.
- Line from drilling spool to choke manifold should be as straight as possible. Lines downstream from chokes shall make turns by large bends or 90° bends using bull plugged tees.
- Discharge lines from chokes, choke bypass and from top of gas separator should vent as far as practical from the well.

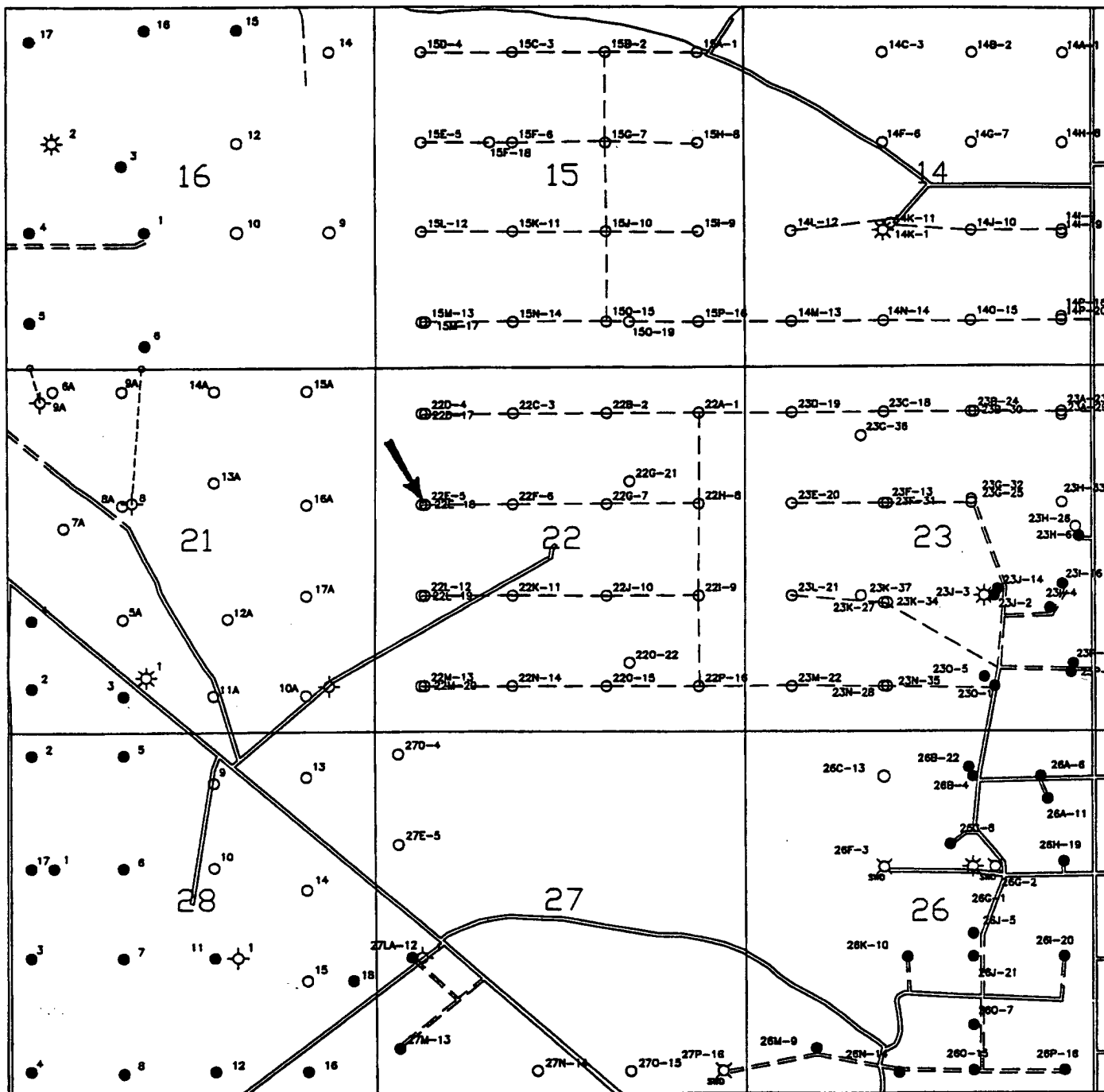
**Attachment to Exhibit #1  
NOTES REGARDING BLOWOUT PREVENTERS  
Devon Energy Corporation (Nevada)  
TODD "22E" FEDERAL #18  
1980' FNL & 710' FWL  
Section 22-T23S-R31E, Unit E  
Eddy County, New Mexico**

1. Drilling nipple will be constructed so it can be removed mechanically without the aid of a welder. The minimum internal diameter will equal BOP bore.
2. Wear ring will be properly installed in head.
3. Blowout preventer and all associated fittings will be in operable condition to withstand a minimum 3000 psi working pressure.
4. All fittings will be flanged.
5. A full bore safety valve tested to a minimum 3000 psi WP with proper thread connections will be available on the rotary rig floor at all times.
6. All choke lines will be anchored to prevent movement.
7. All BOP equipment will be equal to or larger in bore than the internal diameter of the last casing string.
8. Will maintain a kelly cock attached to the kelly.
9. Hand wheels and wrenches will be properly installed and tested for safe operation.
10. Hydraulic floor control for blowout preventer will be located as near in proximity to driller's controls as possible.
11. All BOP equipment will meet API standards and include a minimum 40 gallon accumulator having two independent means of power to initiate closing operation.



R 31 E

T 23 S



devon

SAND DUNES FIELD  
EDDY COUNTY, NEW MEXICO

TODD-22E FEDERAL-18  
EXHIBIT 3

Scale in Feet  
0 2000