

District I  
1625 N French Dr., Hobbs, NM 88240  
District II  
1301 W Grand Avenue, Artesia, NM 88210  
District III  
1000 Rio Brazos Road, Aztec, NM 87410  
District IV  
1220 S St Francis Dr., Santa Fe, NM 87505

State of New Mexico  
Energy Minerals and Natural Resources  
Department  
Oil Conservation Division  
1220 South St. Francis Dr.  
Santa Fe, NM 87505

MAR 16 2009

Form C-144 CLEZ  
July 21, 2008

For closed-loop systems that only use above ground steel tanks or haul-off bins and propose to implement waste removal for closure, submit to the appropriate NMOCD District Office

**Closed-Loop System Permit or Closure Plan Application**

*(that only use above ground steel tanks or haul-off bins and propose to implement waste removal for closure)*

Type of action: ☒ Permit ☐ Closure

**Instructions:** Please submit one application (Form C-144 CLEZ) per individual closed-loop system request. For any application request other than for a closed-loop system that only use above ground steel tanks or haul-off bins and propose to implement waste removal for closure, please submit a Form C-144.

Please be advised that approval of this request does not relieve the operator of liability should operations result in pollution of surface water, ground water or the environment. Nor does approval relieve the operator of its responsibility to comply with any other applicable governmental authority's rules, regulations or ordinances

1.  
Operator: Cameron Oil & Gas Co., Inc OGRID # 181109  
Address P O. Box 1455  
Facility or well name: Amoco Federal Well No 2  
API Number 30-005-64108 OCD Permit Number \_\_\_\_\_  
U/L or Qtr/Qtr A Section 23 Township 14S Range 29E County Chaves  
Center of Proposed Design: Latitude 33.09393 N Longitude 103 99283 W NAD: X1927 ☐ 1983  
Surface Owner: ☒ Federal ☐ State ☐ Private ☐ Tribal Trust or Indian Allotment

2.  
☐ **Closed-loop System:** Subsection H of 19 15 17 11 NMAC  
Operation: ☒ Drilling a new well ☐ Workover or Drilling (Applies to activities which require prior approval of a permit or notice of intent) ☐ P&A  
☐ Above Ground Steel Tanks or ☒ Haul-off Bins

3.  
**Signs:** Subsection C of 19 15.17 11 NMAC  
X 12"x 24", 2" lettering, providing Operator's name, site location, and emergency telephone numbers  
☐ Signed in compliance with 19 15 3 103 NMAC

4.  
**Closed-loop Systems Permit Application Attachment Checklist:** Subsection B of 19 15 17.9 NMAC  
**Instructions:** Each of the following items must be attached to the application. Please indicate, by a check mark in the box, that the documents are attached.  
☒ Design Plan - based upon the appropriate requirements of 19 15 17 11 NMAC  
☒ Operating and Maintenance Plan - based upon the appropriate requirements of 19 15 17 12 NMAC  
☒ Closure Plan (Please complete Box 5) - based upon the appropriate requirements of Subsection C of 19.15 17 9 NMAC and 19 15.17.13 NMAC  
☐ Previously Approved Design (attach copy of design) API Number \_\_\_\_\_  
☐ Previously Approved Operating and Maintenance Plan API Number \_\_\_\_\_

5.  
**Waste Removal Closure For Closed-loop Systems That Utilize Above Ground Steel Tanks or Haul-off Bins Only:** (19 15 17 13 D NMAC)  
**Instructions:** Please identify the facility or facilities for the disposal of liquids, drilling fluids and drill cuttings. Use attachment if more than two facilities are required.  
Disposal Facility Name: Gandy Marley Disposal Facility Permit Number: NMI - 19  
Disposal Facility Name \_\_\_\_\_ Disposal Facility Permit Number \_\_\_\_\_  
Will any of the proposed closed-loop system operations and associated activities occur on or in areas that will not be used for future service and operations?  
☐ Yes (If yes, please provide the information below) ☒ No  
Required for impacted areas which will not be used for future service and operations  
☐ Soil Backfill and Cover Design Specifications - based upon the appropriate requirements of Subsection H of 19 15 17 13 NMAC  
☐ Re-vegetation Plan - based upon the appropriate requirements of Subsection I of 19 15 17 13 NMAC  
☐ Site Reclamation Plan - based upon the appropriate requirements of Subsection G of 19 15.17 13 NMAC

6.  
**Operator Application Certification:**  
I hereby certify that the information submitted with this application is true, accurate and complete to the best of my knowledge and belief.  
Name (Print): David Sweeney Title: Vice President  
Signature: David Sweeney Date: 01/07/09  
e-mail address: \_\_\_\_\_ Telephone 575 627 3284 cell=575.420.1108

0209187

7  
**OCD Approval:** ☒ Permit Application (including closure plan) ☐ Closure Plan (only)

OCD Representative Signature: \_\_\_\_\_

Approval Date: 03-17-09

Title: Geologist

OCD Permit Number: 0209184

8.  
**Closure Report (required within 60 days of closure completion):** Subsection K of 19 15 17 13 NMAC

**Instructions:** Operators are required to obtain an approved closure plan prior to implementing any closure activities and submitting the closure report. The closure report is required to be submitted to the division within 60 days of the completion of the closure activities. Please do not complete this section of the form until an approved closure plan has been obtained and the closure activities have been completed.

☐ Closure Completion Date: \_\_\_\_\_

9.  
**Closure Report Regarding Waste Removal Closure For Closed-loop Systems That Utilize Above Ground Steel Tanks or Haul-off Bins Only:**

**Instructions:** Please identify the facility or facilities for where the liquids, drilling fluids and drill cuttings were disposed. Use attachment if more than two facilities were utilized.

Disposal Facility Name \_\_\_\_\_ Disposal Facility Permit Number \_\_\_\_\_

Disposal Facility Name \_\_\_\_\_ Disposal Facility Permit Number \_\_\_\_\_

Were the closed-loop system operations and associated activities performed on or in areas that *will not* be used for future service and operations?

☐ Yes (If yes, please demonstrate compliance to the items below) ☐ No

*Required for impacted areas which will not be used for future service and operations*

☐ Site Reclamation (Photo Documentation)

☐ Soil Backfilling and Cover Installation

☐ Re-vegetation Application Rates and Seeding Technique

10  
**Operator Closure Certification:**

I hereby certify that the information and attachments submitted with this closure report is true, accurate and complete to the best of my knowledge and belief. I also certify that the closure complies with all applicable closure requirements and conditions specified in the approved closure plan.

Name (Print): \_\_\_\_\_ Title \_\_\_\_\_

Signature \_\_\_\_\_ Date \_\_\_\_\_

e-mail address \_\_\_\_\_ Telephone \_\_\_\_\_

**CAMERON OIL & GAS CO., INC. –AMOCO FEDERAL, WELL No. 2**  
**API: 30-**

**A- Sec. 23, T14S R29E: 660' FNL & 990' FEL CHAVES COUNTY, NM**

**DESIGN: Closed System with roll-off steel bin (pits)**

**GANDY-MARLEY Roswell, NM** will supply (1) bin, rails and transportation relating to the Closed system. Specifications of Steel Roll Off Bin System attached.

**Contact:** David Sweeney, Vice President, Cameron Oil & Gas Co., Inc.  
Cell #: 575-420-1108 Office # 575-627-3284

**Drilling Supervisor: Lloyd Parnell – 505-269-5991 Cell Phone**

Monitoring 24 hour service

Equipment:

300 bbl frac tank for fresh water

Gandy Marley, Inc. Steel Bin with track system.

Layout of steel roll off bin and detail of bin attached.

Cuttings and associated liquids will be hauled to a State regulated third party disposal site: Gandy Marley, Inc. Disposal Facility Permit # NMI-6

**OPERATIONS:**

Closed Bin equipment will be inspected daily by each tour and any necessary maintenance performed.

Any leak in system will be repaired and or/contained immediately.

OCD will be notified within 48 hours of the spill.

Remediation process started immediately.

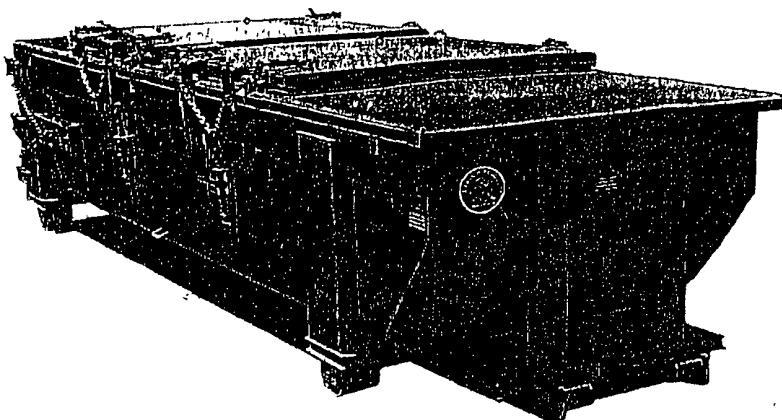
**CLOSURE:**

During drilling operations all liquids, drilling fluids and cuttings will be hauled off via Gandy Marley, Inc. Disposal Facility Permit # NMI-6

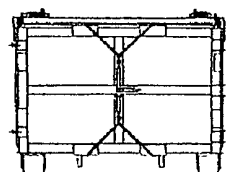
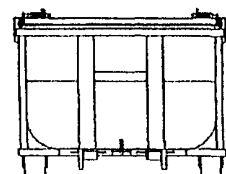
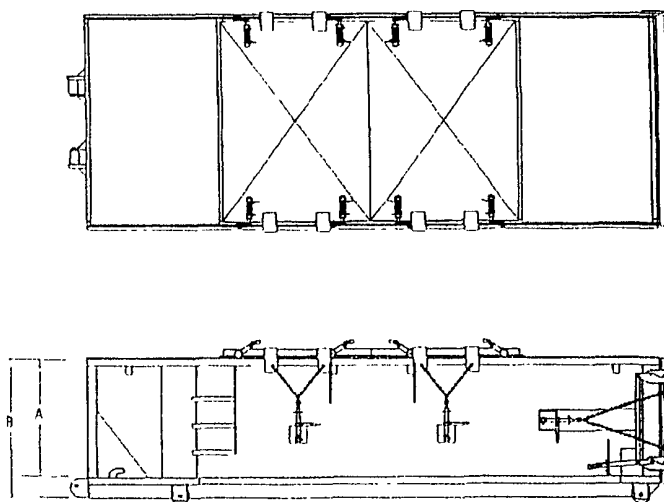
# SPECIFICATIONS

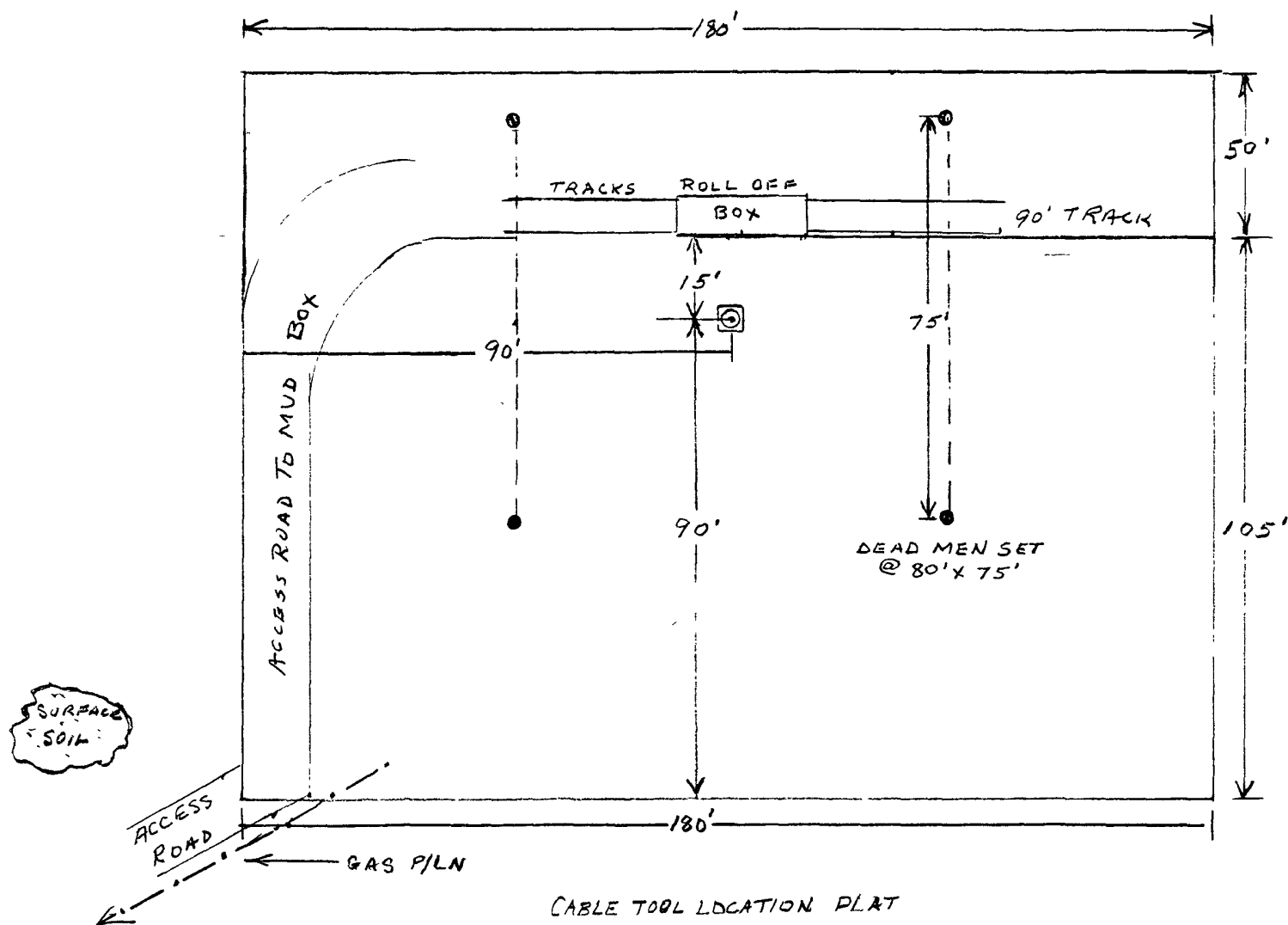
## Heavy Duty Split Metal Rolling Lid

FLOOR: 3/16" PL one piece  
 CROSS MEMBER: 3 x 4.1 channel 16" on center  
 WALLS: 3/16" PL solid welded with tubing top, inside liner hooks  
 DOOR: 3/16" PL with tubing frame  
 FRONT: 3/16" PL slant formed  
 PICK UP: Standard cable with 2" x 6" x 1/4" rails, gusset at each crossmember  
 WHEELS: 10 DIA x 9 long with rease fittings  
 DOOR LATCH: 3 Independent ratchet binders with chains, vertical second latch  
 GASKETS: Extruded rubber seal with metal retainers  
 WELDS: All welds continuous except sub-structure crossmembers  
 FINISH: Coated inside and out with direct to metal, rust inhibiting acrylic enamel color coat  
 HYDROTESTING: Full capacity static test  
 DIMENSIONS: 22'-11" long (21'-8" inside), 99" wide (88" inside), see drawing for height  
 OPTIONS: Steel grit blast and special paint, Ampliroll, Heil and Dino pickup  
 ROOF: 3/16" PL roof panels with tubing and channel support frame  
 LIDS: (2) 68" x 90" metal rolling lids spring loaded, self raising  
 ROLLERS: 4" V-groove rollers with delrin bearings and grease fittings  
 OPENING: (2) 60" x 82" openings with 8" divider centered on container  
 LATCH: (2) independent ratchet binders with chains per lid  
 GASKETS: Extruded rubber seal with metal retainers



CONT.	A	B
20 YD	41	53
25 YD	53	65
30 YD	65	77





CABLE TOOL LOCATION PLAT

EXHIBIT "D"  
CAMERON OIL & GAS CO., INC.  
Amoco Federal, Well No. 2  
Pad & Pit Layout