

PLEASE EXPEDITE

N.M. Oil Cons. DIV-Dist. 2

SUBMIT IN TRIPPLICATE

FORM APPROVED

OMB NO. 1004-0136

Expires: February 28, 1995

UNITED STATES

1301 W. Grand Avenue

DEPARTMENT OF THE INTERIOR

Artesia, NM 88210

BUREAU OF LAND MANAGEMENT

APPLICATION FOR PERMIT TO DRILL OR DEEPEN

1a. TYPE OF WORK

DRILL ☐DEEPEN ☐REENTER ☒

b. TYPE OF WELL

OIL
WELL ☐GAS
WELL ☒

OTHER

SINGLE
ZONE ☒MULTIPLE
ZONE ☐

2. NAME OF OPERATOR

PURE RESOURCES, L.P.

(KEN KRAWIETZ 432-498-2655)

3. ADDRESS AND TELEPHONE NO.

500 WEST ILLINOIS AVENUE MIDLAND, TEXAS 79701

4. LOCATION OF WELL (Report location clearly and in accordance with any State requirements.)*

At surface

1998' FNL & 604' FWL SEC. 13 T21S-E22E EDDY CO. NM
At proposed prod. zone SAME

14. DISTANCE IN MILES AND DIRECTION FROM NEAREST TOWN OR POST OFFICE*

Approximately 30 miles West Northwest of Carlsbad, New Mexico

15. DISTANCE FROM PROPOSED*

LOCATION TO NEAREST
PROPERTY OR LEASE LINE, FT.
(Also to nearest drlg. unit line, if any)

604

16. NO. OF ACRES IN LEASE

1280

18. DISTANCE FROM PROPOSED LOCATION*
TO NEAREST WELL, DRILLING, COMPLETED,
OR APPLIED FOR, ON THIS LEASE, FT.

NA

19. PROPOSED DEPTH

9170'

21. ELEVATIONS (Show whether DF, RT, GR, etc.)

4174' GR.

23.

PROPOSED CASING AND CEMENTING PROGRAM

SIZE OF HOLE	GRADE, SIZE OF CASING	WEIGHT PER FOOT	SETTING DEPTH	QUANTITY OF CEMENT
17 1/2"	K-55 13 3/8"	68	640'	650 Sx. Circulated
12 1/4"	K-55 8 5/8"	24	2023'	1000 Sx. "
7 7/8"	J-55 5 1/2"	17	9170'	650 Sx. Est TOC 5000'

APPROVAL SUBJECT TO
GENERAL REQUIREMENTS
AND SPECIAL STIPULATIONS
ATTACHED

SEE ATTACHED SHEET

CARLSBAD CONTROLLED WATER BASIN

RECEIVED

DEC 18 2003

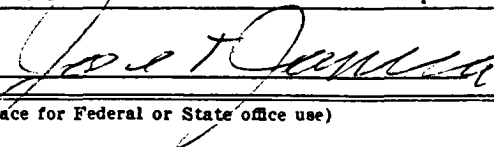
OCD-ARTESIA

PURE RESOURCES, L.P. ACCEPTS THE RESPONSIBILITY OF OPERATING THIS LEASE.

IN ABOVE SPACE DESCRIBE PROPOSED PROGRAM: If proposal is to deepen, give data on present productive zone and proposed new productive zone. If proposal is to drill or deepen directionally, give pertinent data on subsurface locations and measured and true vertical depths. Give blowout preventer program, if any.

24.

SIGNED



TITLE

Agent

DATE

11/10/03

(This space for Federal or State office use)

PERMIT NO.

APPROVAL DATE

Application approval does not warrant or certify that the applicant holds legal or equitable title to those rights in the subject lease which would entitle the applicant to conduct operations thereon.
CONDITIONS OF APPROVAL, IF ANY:

APPROVED BY

/s/ Joe G. Lara

TITLE

FIELD MANAGER

DATE

DEC 18 2003

*See Instructions On Reverse Side

APPROVAL FOR 1 YEAR

Stinking Draw Federal #1 Reentry Procedure

1. Prep location. Dig out wellhead. Weld on 8 5/8 SOW x 11" 3000 starter head.
2. MI RT's. NU and test BOPE. Mix mud as necessary.
3. TIH w/ 7 7/8" MT bit on 6 1/2" DC's.
4. Drill out surface plug. TIH to plug @ 1975' and tag. Test casing to 1000 psi.
5. Drill out remaining cement plugs. C&C hole. POH LD DP & DC's.
6. May run modern suite of openhole logs. GR SP DLL MSFL / GR CNL LDT
7. Run 5 1/2" 17# J-55 LTC w/ FS & FC. Centralize zones of interest.
8. Cement 5 1/2" per recommendation. TOC 5500'. Displace w/ 2% KCl.
9. ND BOP. Set slips. NU 11" 3000 x 7 1/16" 3000 tubing head and DH tree.
10. Rig down and MORT.
11. MIRU PU. Run GR CCL across zones of interest, TD – 8700 and 5800 – 6400.
Correlate to Schul GR CNL FDC dated 3/7/80.
12. Perf Wolfcamp 5940 – 60 w/ 1 spf.
13. GIH w/ pkr and o/o tool on 2 7/8" WS. Spot acid across perfs. Set pkr @ 5840±.
14. Acidize w/ 5000 gal 15% NEFE and BS's.
15. Swab test.
16. Based on test results will frac, add perfs and acidize or squeeze.
17. If Wolfcamp test is not commercial, POH w/ pkr, squeeze perfs. Drill out and test to 1000 psi.
18. Perf Lower Morrow 8970-74, 9008-28, 9036-40 w/ 2spf.
19. GIH w/ pkr and o/o tool w/ 1.81" profile on 2 7/8" WS.
20. Swab test. Acidize w/ 3000 gal 7 1/2% NEFE and BS's. Swab test.
21. If necessary frac. Design to be determined from test results.
22. Flow test. Run PBU test followed by 4 point test. TOPS.

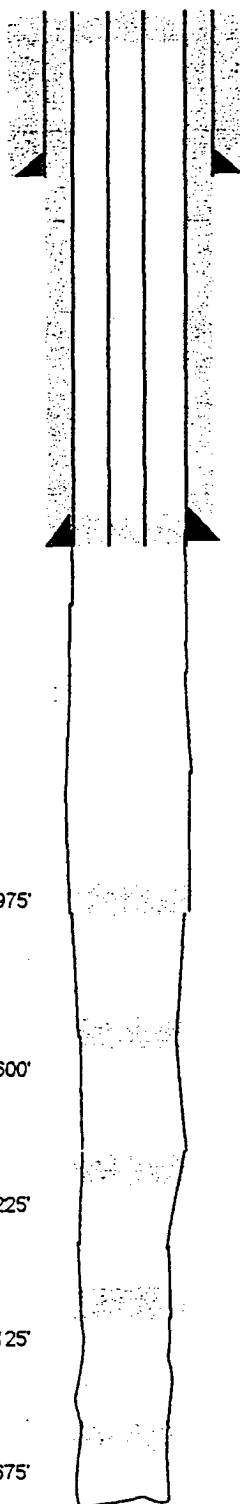
Sequence in which zones are tested may change, ie may test Morrow first based on log evaluation.

Well: Stinking Draw Federal #1
Field: Indian Basin West



Elev 4182' KB 4170' GL

A Unocal Company



15 sx Class H cmt @ surface

13 3/8", 68#, K-55
 ST&C csg @ 640'
 Cmt w/ 650 sx Class C
 Circ 212 sx to pit

1980 FNL 660 FWL Sec 13 T21S R22E
 Eddy County, New Mexico
 API #3001523130
 Drilled and Plugged in 1980

Formation Tops

Abo/ SH	2876
Wolfcamp	5298
Wolfcamp Dolo/Lower	5772
Pennsylvanian Virgilian Sand	6728
Canyon Series	7211
Strawn	8067
Atoka	8458
Morrow	8746
Lower Morrow	8987
Chester	9089

8 5/8", 24#, K-55 ST&C csg @ 2023'
 Cmt w/ 800 sx Halliburton Lite
 & 200 sx Class C
 Circ 290 sx to pit

Plug #5
 2075-1975'

DST #1 8800-8888' - Open 1 hr 15"
 IHP 4665; IFP 227-253; 30 min
 ISIP 1260; FFP 202-227; 120"
 FSIP 2038; FHP 4588. Rec 360'
 Drilling mud

Plug #4
 3750-3600'

Plug #3
 5375-5225'

DST #2 8936'-TD- Open 55" IHP 4535; IFP 1629-1629; ISIP 3521;
 FFP & FSIP - not recorded charts indicate severe plugging end of the
 first flow period & the packer seats were lost at the beginning of the 2nd flow period
 FHP 4542; Rec 576' Drilling mud

Plug #2
 7275-7125'

DST #3- 8217'-8269'- failed

Plug #1
 8825-8675'

DST #4- 8222'-8274'- failed

TD 9710'

State of New Mexico

DISTRICT I
P.O. Box 1980, Hobbs, NM 88241-1980

Energy, Minerals and Natural Resources Department

Form C-102

Revised February 10, 1994

Submit to Appropriate District Office

State Lease - 4 Copies

Fee Lease - 3 Copies

DISTRICT II
P.O. Drawer DD, Artesia, NM 88211-0719

OIL CONSERVATION DIVISION

P.O. Box 2088

Santa Fe, New Mexico 87504-2088

DISTRICT III
1000 Rio Brazos Rd., Artec, NM 87410

DISTRICT IV
P.O. BOX 2088, SANTA FE, N.M. 87504-2088

WELL LOCATION AND ACREAGE DEDICATION PLAT

☐ AMENDED REPORT

API Number 30-015-23130		Pool Code 79020	Pool Name INDIAN BASIN MORROW WEST
Property Code	Property Name STINKING DRAW FEDERAL		Well Number 1
OGRID No. 150628	Operator Name PURE RESOURCES, L.P.		Elevation 4174'

Surface Location

UL or lot No.	Section	Township	Range	Lot Idn	Feet from the	North/South line	Feet from the	East/West line	County
E	13	21-S	22-E		1998'	NORTH	604'	WEST	EDDY

Bottom Hole Location If Different From Surface

UL or lot No.	Section	Township	Range	Lot Idn	Feet from the	North/South line	Feet from the	East/West line	County

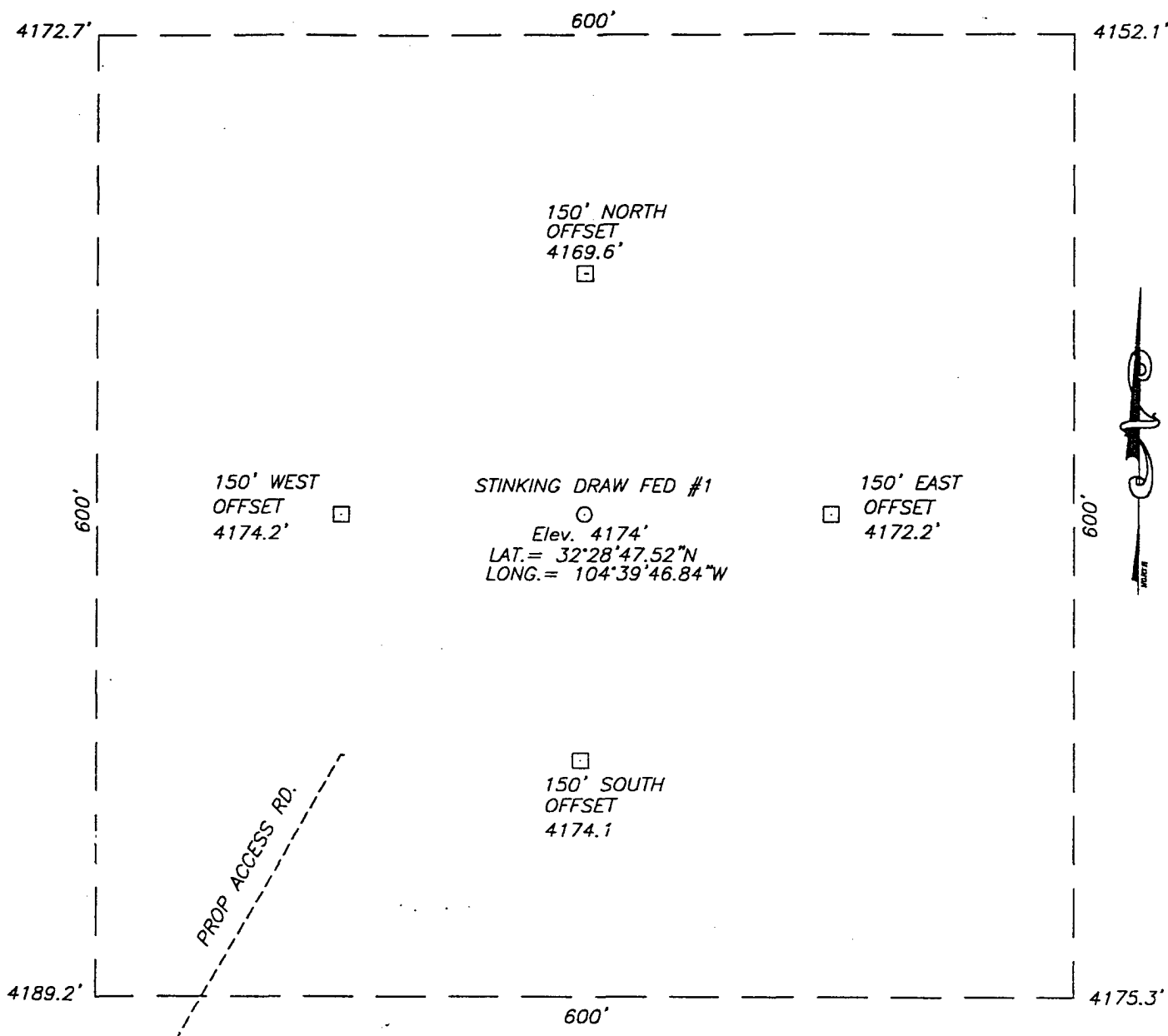
Dedicated Acres 320	Joint or Infill	Consolidation Code	Order No.
------------------------	-----------------	--------------------	-----------

NO ALLOWABLE WILL BE ASSIGNED TO THIS COMPLETION UNTIL ALL INTERESTS HAVE BEEN CONSOLIDATED
OR A NON-STANDARD UNIT HAS BEEN APPROVED BY THE DIVISION

	<u>GEODETTIC COORDINATE</u> NAD 27 NME Y = 538446.1 N X = 398336.8 E LAT. = 32°28'47.52"N LONG. = 104°39'46.84"W		OPERATOR CERTIFICATION I hereby certify the the information contained herein is true and complete to the best of my knowledge and belief. Signature Joe T. Janica Printed Name Agent Title 11/10/03 Date
	SURVEYOR CERTIFICATION I hereby certify that the well location shown on this plat was plotted from field notes of actual surveys made by me or under my supervision, and that the same is true and correct to the best of my belief. October 15, 2003 Date Surveyed Signature & Seal of Professional Surveyor 03.11.1107 Certificate No. GARY EDSON 12841		

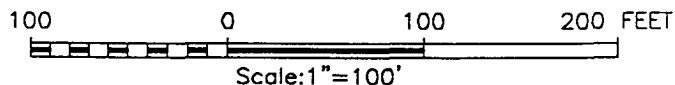
EXHIBIT "A"

SECTION 13, TOWNSHIP 21 SOUTH, RANGE 22 EAST, N.M.P.M.,
EDDY COUNTY, NEW MEXICO.



DIRECTIONS TO LOCATION

FROM THE Y AT CO. RD. 402 AND THE ENTRANCE TO THE KERR-McGEE BUNNELL FEDERAL LEASE ROAD TAKE THE LEFT FORK (BUNNELL LEASE) AND FOLLOW ROAD FOR 0.35 MILES TO THE END OF A RECLAIMED ROAD. FOLLOW RECLAIMED ROAD FOR 1.6 MILES TO A FENCE AND THE END OF THE ROAD. WELL IS 671 FEET NORTHEAST ALONG STAKED ROAD.



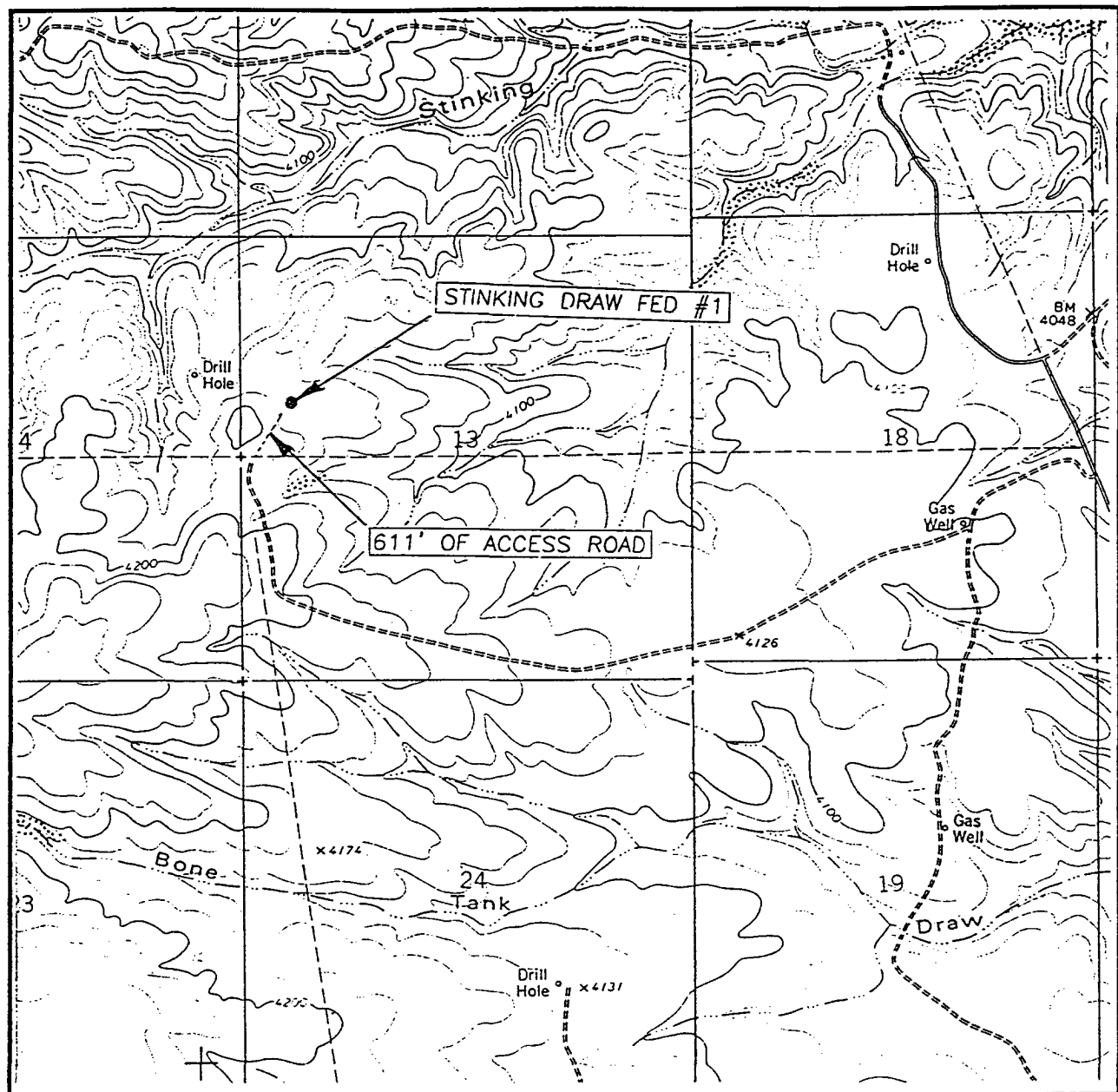
PURE RESOURCES, L.P.

STINKING DRAW FEDERAL #1 WELL
LOCATED 1998 FEET FROM THE NORTH LINE
AND 604 FEET FROM THE WEST LINE OF SECTION 13,
TOWNSHIP 21 SOUTH, RANGE 22 EAST, N.M.P.M.,
EDDY COUNTY, NEW MEXICO.

Survey Date: 10/15/03	Sheet 1 of 1 Sheets
W.O. Number: 03.11.1107	DRAWN BY: A.W.B
Date: 10/16/03	DISK: CD#9
PURE #1107	Scale: 1"=100'

JOHN WEST SURVEYING COMPANY
412 N. DAL PASO - HOBBS, NEW MEXICO - 505-393-3117

LOCATION VERIFICATION MAP



SCALE: 1" = 2000'

CONTOUR INTERVAL: 20'
CAWLEY DRAW, N.M.

SEC. 13 TWP. 21-S RGE. 22-E

SURVEY N.M.P.M.

COUNTY EDDY

DESCRIPTION 1998' FNL & 604' FWL

ELEVATION 4174'

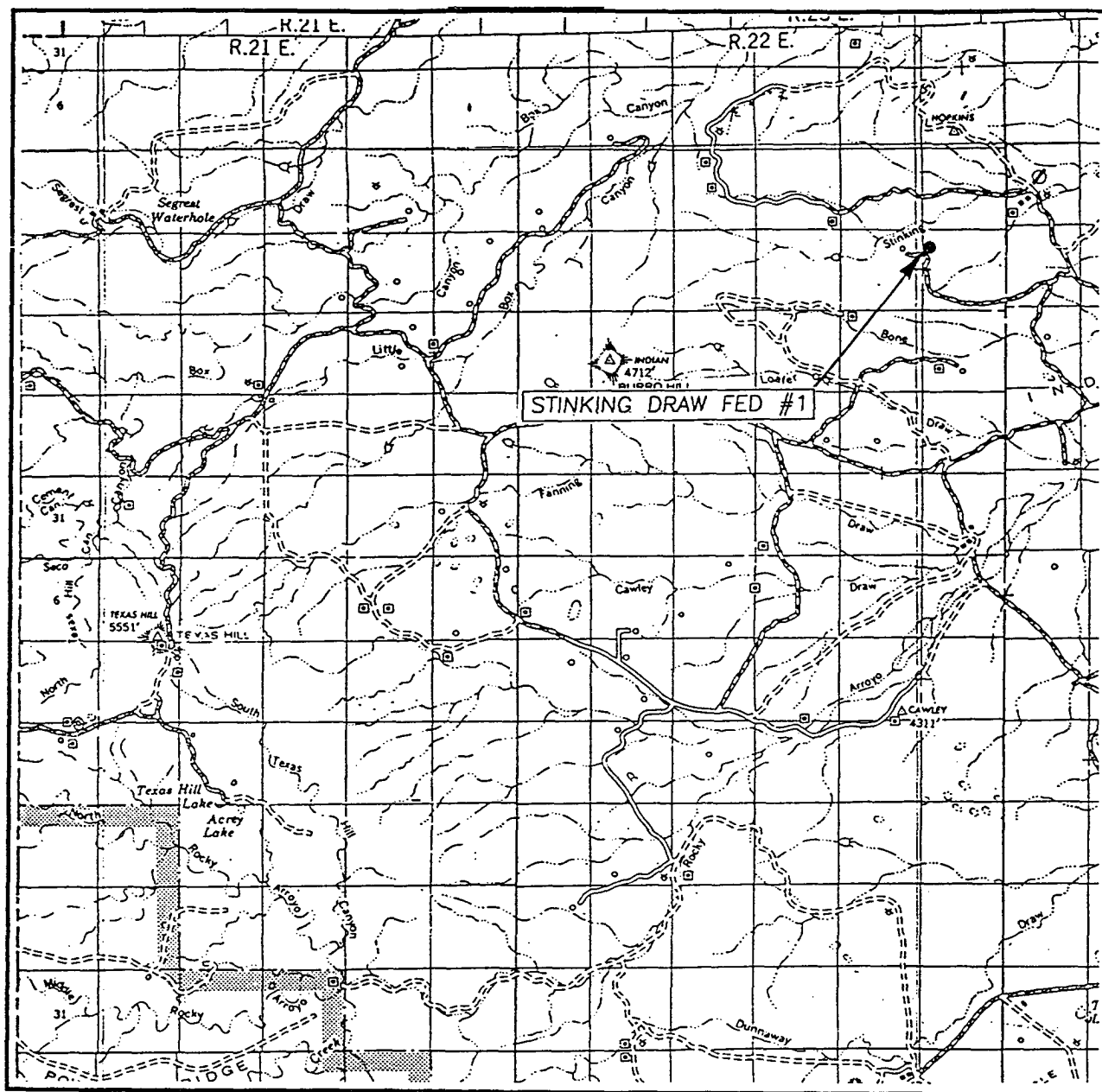
OPERATOR PURE RESOURCES, L.P.

LEASE STINKING DRAW FED

U.S.G.S. TOPOGRAPHIC MAP
CAWLEY DRAW, N.M.

JOHN WEST SURVEYING
HOBBS, NEW MEXICO
(505) 393-3117

VICINITY MAP



SCALE: 1" = 2 MILES

SEC. 13 TWP. 21-S RGE. 22-E

SURVEY N.M.P.M.

COUNTY EDDY

DESCRIPTION 1998' FNL & 604' FWL

ELEVATION 4174'

OPERATOR PURE RESOURCES, L.P.

LEASE STINKING DRAW FED

JOHN WEST SURVEYING
HOBBS, NEW MEXICO
(505) 393-3117

APPLICATION TO DRILL

PURE RESOURCES, L.P.
STINKING DRAW FEDERAL #1
UNIT "E" SECTION 13
T21S-R22E EDDY CO. NM

In response to questions asked under Section II of Bulletin NTL-6 the following information on the above well is provided for your consideration.

1. Location of well: 1998' FNL & 604' FWL SECTION 13 T21S-R22E EDDY CO. NM

2. Ground Elevation above Sea Level: 4174' GR.

3. Geological age of surface formation: Quaternary Deposits:

4. Drilling tools and associated equipment: Conventional rotary drilling rig using drilling mud as a circulating medium to remove solids from hole.

5. Proposed drilling depth: Clean out to 9170'

6. Estimated tops of geological markers:

Abo Shale	2876'	Atoka	8458'
Wolfcamp	5298'	Morrow	8746'
Penn Virgilian Sd.	6728'	Lower Morrow	8987'
Strawn	8067'	Chester	9089'

7. Possible mineral bearing formations:

Wolfcamp	Gas
Morrow	Gas

8. Casing Program:

Hole Size	Interval	OD of Casing	Weight	Thread	Collar	Grade
*17½"	0-640'	13 3/8"	68	8-R	ST&C	K-55
*12¼"	0-2023'	8 5/8"	24	8-R	ST&C	K-55
7 7/8"	0-9170'	5½"	17	8-R	LT&C	J-55

* This casing is already in place and cemented to surface.

APPLICATION TO DRILL

PURE RESOURCES, L.P.
STINKING DRAW FEDERAL #1
UNIT "E" SECTION 13
T21S-R22E EDDY CO. NM

9. CASING CEMENTING & SETTING DEPTH:

13 3/8"	Surface	This casing is in place cemented with 650 Sx. of cement and circulated to surface.
8 5/8"	Intermediate	This casing is already in place and cemented with 1000 Sx. and circulated to surface.
5 1/2"	Production	Set 9170' of 5 1/2" 17# J-55 LT&C casing. Cement with 650 Sx. of Class "H" cement + additives. Cement top to be high enough to cover the Wolfcamp formation.

10. PRESSURE CONTROL EQUIPMENT: Exhibit "E" shows a 1500 series 3000 PSI working pressure B.O.P. consisting of an annular bag type preventor, middle blind rams, and bottom pipe rams. The B.O.P. will be nipped up on the 13 3/8" casing and tested to API specifications. The B.O.P. will be operated at least once each 24 Hr. period and the blind rams will be operated when the drill pipe is out of on trips. Full opening stabbing valve and upper kelly cock will be available in case if needed. Exhibit "E-1" shows a hydraulically operated closing unit and a 3" 3000 PSI choke manifold with adjustable chokes. No abnormal pressures or temperatures are expected while drilling this well. No problems in offset wells.

11. PROPOSED MUD CIRCULATING SYSTEM:

DEPTH	MUD WT.	VISC.	FLUID LOSS	TYPE MUD SYSTEM
-------	---------	-------	------------	-----------------

2023-9170'	8.4- 8.9	29-40	NC *	Fresh water mud system add fresh water gel for viscosity control. use high viscosity sweeps to clean hole.
------------	----------	-------	------	--

* If water loss control is needed use a Polymer system to reduce water loss to the desired amount this water loss control may be required in order to get hole in condition to run logs and casing.

Sufficient mud materials will be kept on location at all times in order to combat lost circulation, or unexpected kicks. In order to run DST's, open hole logs, and casing, viscosity, and water loss may have to be adjusted to meet these needs.

APPLICATION TO DRILL

PURE RESOURCES, L.P.
STINKING DRAW FEDERAL #1
UNIT "E" SECTION 13
T21S-R22E EDDY CO. NM

12. LOGGING, CORING & TESTING:

- A. Open hole logs: Dual Laterolog, MSFL, CNL, LDT, SP, Gamma Ray, Caliper from TD back to 8 5/8" casing shoe.
- B. Potential producing zones will be evaluated from the new suite of open hole logs. Interesting zones will be perforated and tested.

13. POTENTIAL HAZARDS:

No abnormal pressures or temperatures are expected. There is no known presence of H²S in this area. If H²S is encountered the operator will comply with the provisions of Onshore Oil and Gas Order No. 6. No lost circulation is expected to occur. All personnel will be familiar with all aspects of safe operation of equipment being used to drill this well. Estimated BHP 4500 PSI, and Estimated BHT 185°.

14. ANTICIPATED STARTING DATE AND DURATION OF OPERATION:

Road and location construction will begin after the BLM has approved the APD. Anticipated spud date will be as soon after BLM approval and as soon as a rig will be available. Move in operation and drilling is expected to take 8-10 days. If production casing is run then an additional 30 days will be needed to complete well and construct surface facilities and/or lay flowlines in order to place well on production.

15. OTHER FACETS OF OPERATIONS:

After running casing, cased hole Gamma Ray, Neutron Collar logs will be run from TD back to all possible productive zones. The Morrow formation will be perforated and stimulated in order to establish production. The well will be swab tested and potentialized as a gas well.

HYDROGEN SULFIDE DRILLING OPERATIONS PLAN

1. All Company and Contract personnel admitted on location must be trained by a qualified H₂S safety instructor to the following:
 - A. Characteristics of H₂S
 - B. Physical effects and hazards
 - C. Proper use of safety equipment and life support systems.
 - D. Principle and operation of H₂S detectors, warning system and briefing areas.
 - E. Evacuation procedure, routes and first aid.
 - F. Proper use of 30 minute pressure demand air pack.
2. H₂S Detection and Alarm Systems
 - A. H₂S detectors and audio alarm system to be located at bell nipple, end of blooie line (mud pit) and on derrick floor or doghouse.
3. Windsock and/or wind streamers
 - A. Windsock at mudpit area should be high enough to be visible.
 - B. Windsock at briefing area should be high enough to be visible.
 - C. There should be a windsock at entrance to location.
4. Condition Flags and Signs
 - A. Warning sign on access road to location.
 - B. Flags to be displayed on sign at entrance to location. Green flag, normal safe condition. Yellow flag indicates potential pressure and danger. Red flag, danger, H₂S present in dangerous concentration. Only emergency personnel admitted to location.
5. Well control equipment
 - A. See exhibit "E" & "E-1"
6. Communication
 - A. While working under masks chalkboards will be used for communication.
 - B. Hand signals will be used where chalk board is inappropriate.
 - C. Two way radio will be used to communicate off location in case of emergency help is required. In most cases cellular telephoned will be available at most drilling foreman's trailer or living quarters.
7. Drillstem Testing
 - A. Exhausts will be watered.
 - B. Flare line will be equipped with an electric ignitor or a propane pilot light in case gas reaches the surface.
 - C. If the location is near to a dwelling a closed DST will be performed.

HYDROGEN SULFIDE DRILLING OPERATIONS PLAN

8. Drilling contractor supervisor will be required to be familiar with the effects H₂S has on tubular goods and other mechanical equipment.
9. If H₂S is encountered, mud system will be altered if necessary to maintain control of formation. A mud gas separator will be brought into service along with H₂S scavengers if necessary.

SURFACE USE PLAN

PURE RESOURCES, L.P.
STINKING DRAW FEDERAL #1
UNIT "I" SECTION 13
T21S-R22E EDDY CO. NM

1. EXISTING ROADS & PROPOSED ROADS: Area maps; Exhibit "B" is a reproduction of a County General Hi-way Map. Exhibit "C" is a reproduction of a USGS Topographic Map, showing existing and proposed roads. All existing roads will be maintained in a condition equal to or better than current conditions. Any new roads will be constructed to BLM specifications.
 - A. Exhibit "A" shows the proposed well site as staked.
 - B. From Carlsbad New Mexico take U.S. Hi-way 285 North for 12± miles to State Hi-way 137 (Queens Hi-way), turn Left go 9± miles to CR 401 (Marathon road) bear Right follow CR-401 6.5 miles to CR-402. Turn Right continue North for approximately 1.8 miles turn Left follow reconstructed road approximately 2.5 miles to location.
 - C. Exhibit "F" shows the route of pipeline from well to sales line.
2. PLANNED ACCESS ROADS: Approximately 2.5 miles of road will be re-claimed.
 - A. The access roads will be crowned and ditched to a 12' wide travel surface with a 40' Right-of-Way.
 - B. Gradient of all roads will be less than 5.00%.
 - C. If turn-outs are necessary they will be constructed.
 - D. If needed roads will be surfaced with a minimum of 4" of caliche. This material will be obtained from a local source.
 - E. Center-line for new roads will be flagged. Earth-work will be will be done as field conditions require.
 - F. Culverts will be placed in the access road if they are necessary. The roads will be constructed to utilize low water crossings for drainage as required by topography.
3. LOCATIONS OF EXISTING WELLS IN A ONE MILE RADIUS. EXHIBIT "A-1"
 - A. Water wells - One approximately 1.4 miles Northwest-of location
 - B. Disposal wells - None known
 - C. Drilling wells - None known
 - D. Producing wells - As shown on Exhibit "A-1"
 - E. Abandoned wells - As shown on Exhibit "A-1"

SURFACE USE PLAN

PURE RESOURCES, L.P.
STINKING DRAW FEDERAL #1
UNIT "I" SECTION 13
T21S-R22E EDDY CO. NM

4. If on completion this well is a producer the operator will lay pipelines and construct powerlines along existing road R-O-W's or other existing R-O-W's. Possible routes of pipelines, flowlines and powerlines are shown on Exhibit "F".

5. LOCATION AND TYPE OF WATER SUPPLY:

Water will be purchased locally from a commercial source and trucked over the access roads or piped to location in flexible lines laid on top of the ground.

6. SOURCE OF CONSTRUCTION MATERIAL:

If possible construction material will be obtained from the excavation of drill site, if additional material is needed it will be obtained from a local source and transported over the access roads as shown on Exhibit "C".

7. METHODS OF HANDLING WASTE MATERIAL:

- A. Drill cuttings will be disposed of in the reserve pits.
- B. All trash, junk and other waste material will be contained in trash cages or trash bins to prevent scattering. When the job is completed all contents will be removed and disposed of in a approved sanitary land fill.
- C. Salts remaining after completion of well will be picked up by the supplier, including broken sacks.
- D. Waste water from living quarters will be drained into holes with a minium of 10'. These holes will be covered during drilling and will be back filled when the well is completed. A Porto-John will be provided for the rig crews. This equipment will be properly maintained during the drilling and completion operations and will be removed when all operations are complete.
- E. Remaining drilling fluids will be allowed to evaporate in the reserve pits until the pits are dry enough to be broken out for furthred drying. If the drilling fluids do not evaporate in a reasonable time they will be hauled off by transports to a state approve disposal site. Later pips will be broken out to speed drying. Water produced during completion will be put in reserve pits. Oil and condensate produced will be put in storage tanks and sold.

8. ANCILLARY FACILITIES:

- A. No camps or air strips will be constructed on location.

SURFACE USE PLAN

PURE RESOURCES, L.P.
STINKING DRAW FEDERAL #1
UNIT "I" SECTION 13
T21S-R22E EDDY CO. NM

9. WELL SITE LAYOUT:

- A. Exhibit "D" shows the proposed well site layout.
- B. This Exhibit shows the location of reserve pit, sump pits, and living facilities.
- C. Mud pits in the active circulating system will be steel pits and the reserve pits will be unlined unless subsurface conditions encountered during pit construction indicate that a plastic liner is required to contain lateral migration.
- D. If needed the reserve pits will be lined with polyethelene. The pit liner will be no less than 6 mils thick and the liner will be extended at least 3 feet over the top of the dikes and secured in place to keep edge of liner in place.
- E. The reserve pit will be fenced on three sides and fenced with four strands of barbed wire during drilling and completion phases. The 4th side will be fenced after drilling operations are complete and the drilling rig has moved out. If the well is a producer the mud pits will remain fenced in until the mud has dried up enough to break out the pits and reclaimed according to BLM requirements.

10. PLANS FOR RESTORATION OF SURFACE:

Rehabilitation of the location and reserve pits will be allowed to dry properly, fluids may be moved and disposed of in accordance with article 7-E as previously noted. The pit area will then be leveled and contoured to conform to the original and surrounding area. Drainage systems, if any will be reshaped to the original configuration with provisions made to alleviate future erosion. In case of the well completed as a producer the drilling pad will be necessary to construct production facilities. After the area has been shaped and contoured top soil from the spoil pile will be placed over the disturbed area to the extent possible so that revegetation procedures can be accomplished to comply with the BLM specifications.

If the well is a dry hole the pad and road area will be contoured to match the existing terrain. Top soil will be spread to the extent possible and revegetation will be carried out according to the BLM specifications.

Should the well be a producer the previously noted procedures will apply to those areas which are not required for production facilities.

SURFACE USE PLAN

PURE RESOURCES, L.P.
STINKING DRAW FEDERAL #1
UNIT "I" SECTION 13
T21S-R22E EDDY CO. NM

11. OTHER INFORMATION:

- A. Topography consists of relatively flat area South of Stinking Draw. Soils consists of a thin veneer of sand on top of a Limestone base. Vegetation consists of Creosote, Acacia, Little Leaf Sumac, Lechuguilla, Yucca, Prickley Pear, Sotol, and Algerita.
- B. Surface is owned by the U.S. Government and is administered by the Bureau of Land Management. The surface is used for grazing livestock and the production of oil and gas.
- C. An archaeological survey will be conducted on the location and access roads. This report will be filed with The Bureau of Land Management in the Carlsbad field office.
- D. A dwelling approximately 2 miles North Northeast.

12. OPERATORS REPRESENTIVES:

Before construction:

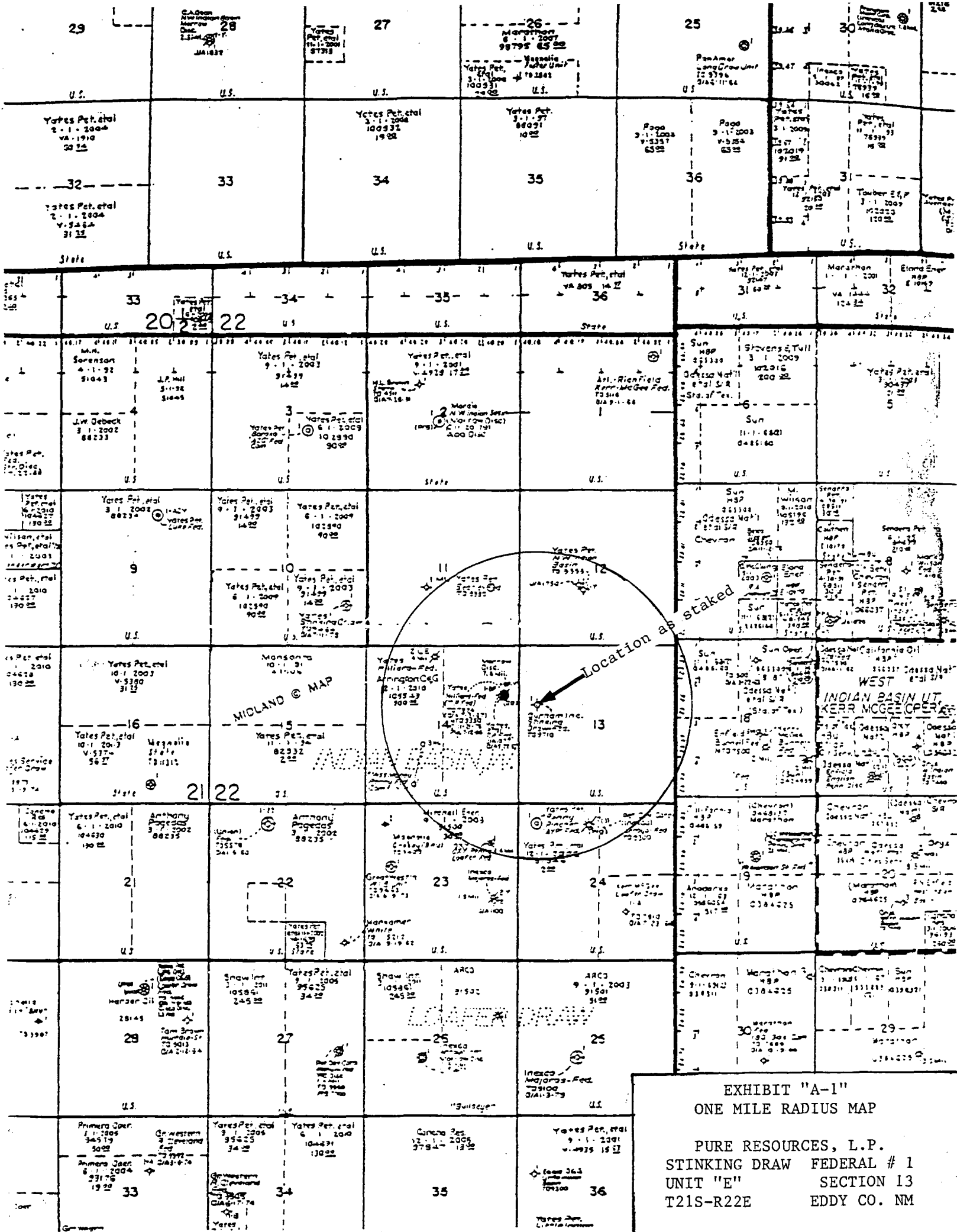
TIERRA EXPLORATION, INC
P.O. BOX 2188
HOBBS, NEW MEXICO 88241
OFFICE Ph. 505-391-8503
JOE T. JANICA

During and after construction:

PURE RESOURCES, L.P.
500 WEST ILLINOIS
MIDLAND, TEXAS 79701
J. ROBERT READY 432-498-8619
KEN KRAWIETZ 432-498-2655

13. CERTIFICATION: I hereby certify that I, or persons under my direct supervision, have inspected the proposed drill site and access roads, and that I am familiar with the conditions which currently exist, that the statements made in this plan are to the best of my knowledge true and correct, and that the work associated with the operations proposed herein will be performed by PURE RESOURCES, L.P. it's contractors/subcontractors is in compfornity with this plan and the terms and conditions under which it is approved. This statement is subject to the provision of U.S.C. 1001 for the filing of a false report.

NAME : Joe T Janica
DATE : 11/10/03
TITLE : Agent



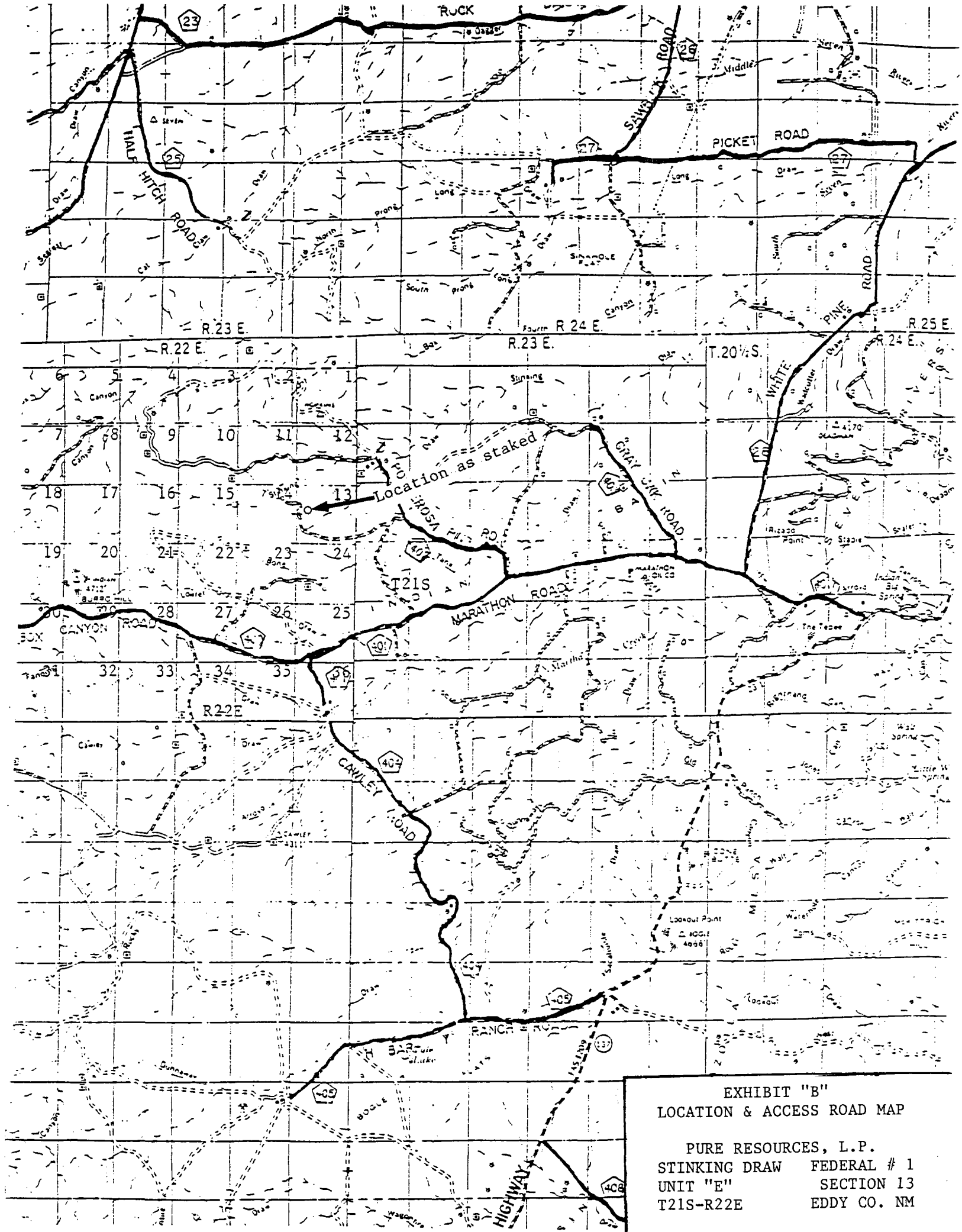
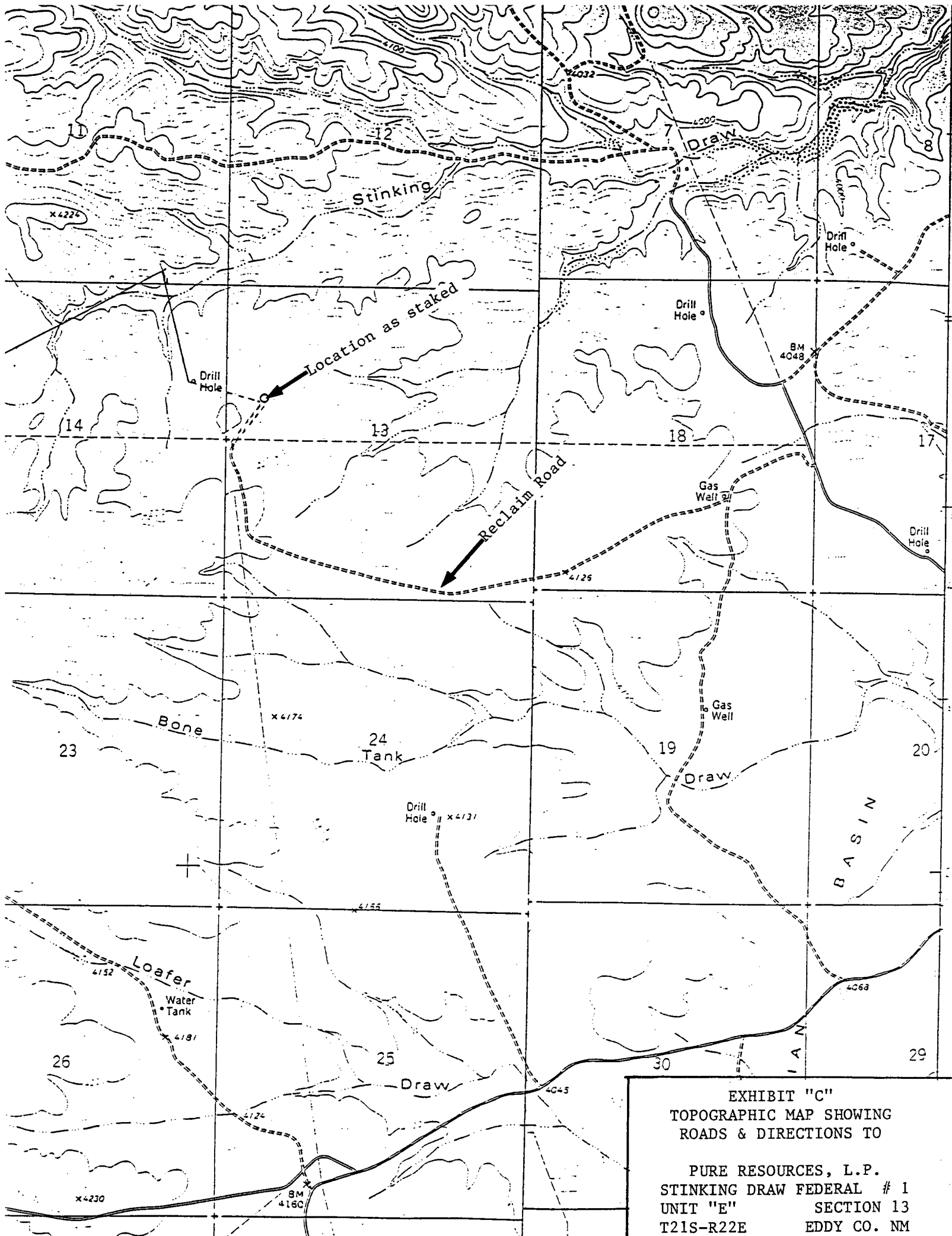


EXHIBIT "B"
LOCATION & ACCESS ROAD MAP

PURE RESOURCES, L.P.
STINKING DRAW FEDERAL # 1
UNIT "E" SECTION 13
T21S-R22E EDDY CO. NM



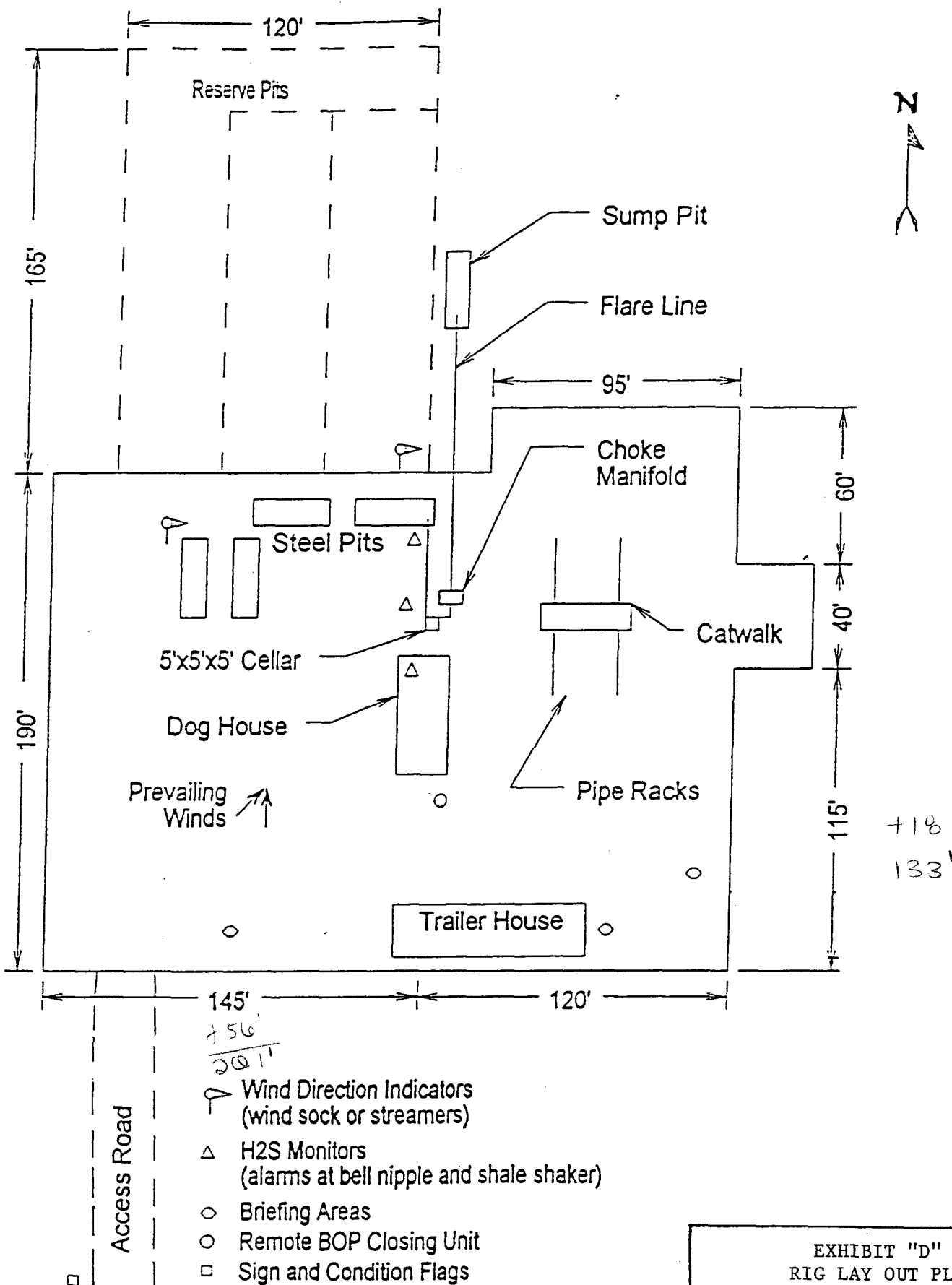
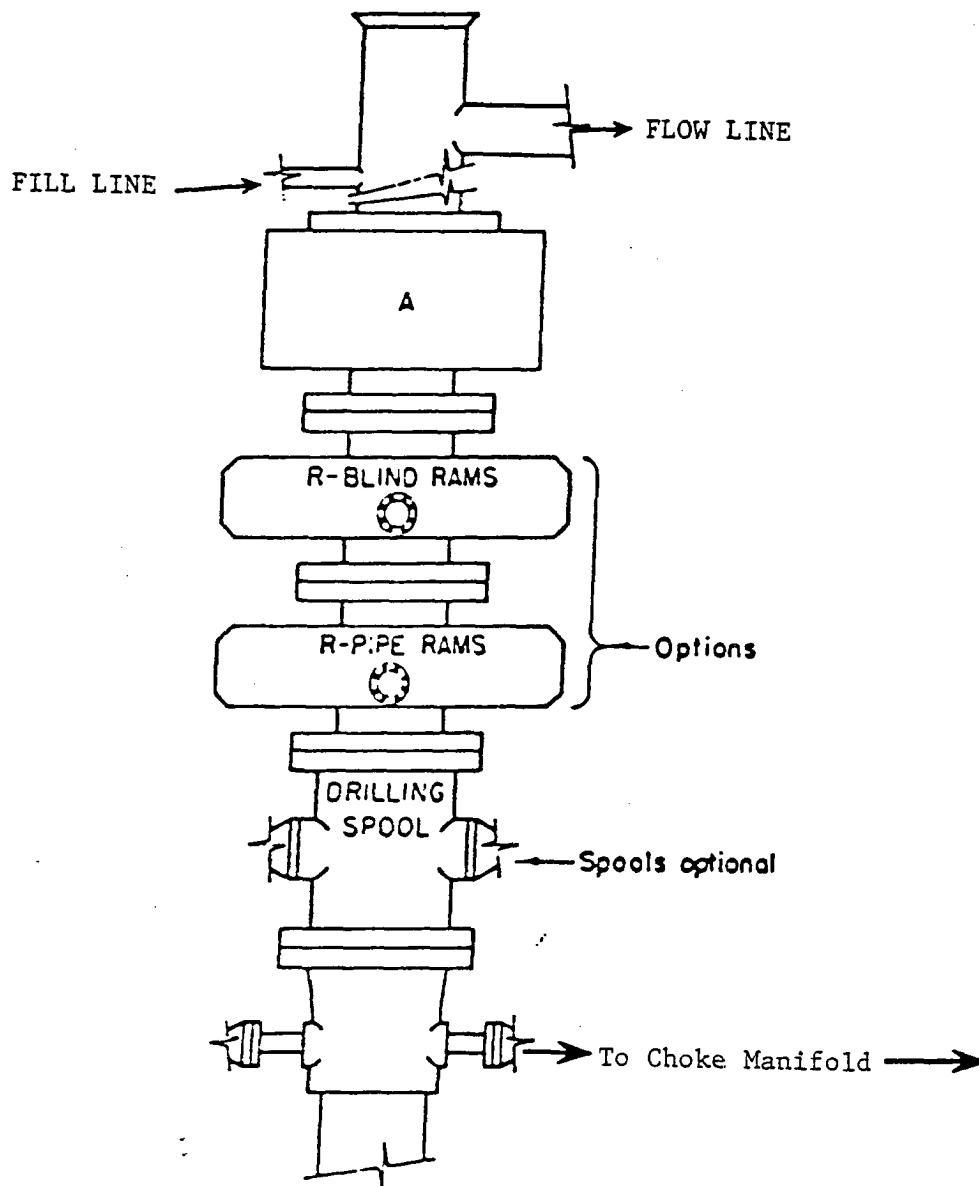


EXHIBIT "D"
RIG LAY OUT PLAT

PURE RESIURCES, L.P.
STINKING DRAW FEDERAL # 1
UNIT "E" SECTION 13
T21S-R22E EDDY CO. NM

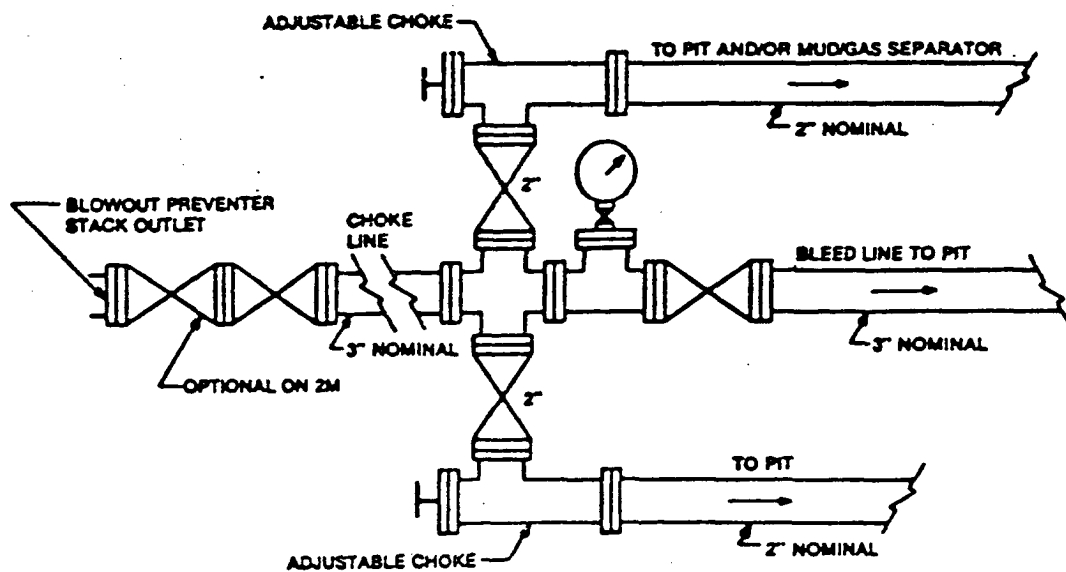


ARRANGEMENT SRRA

900 Series
3000 PSI WP

EXHIBIT "E"
SKETCH OF B.O.P. TO BE USED ON

PURE RESOURCES, L.P.
STINKING DRAW FEDERAL # 1
UNIT "E" SECTION 13
T21S-R22E EDDY CO. NM



Typical choke manifold assembly for 3M WP system

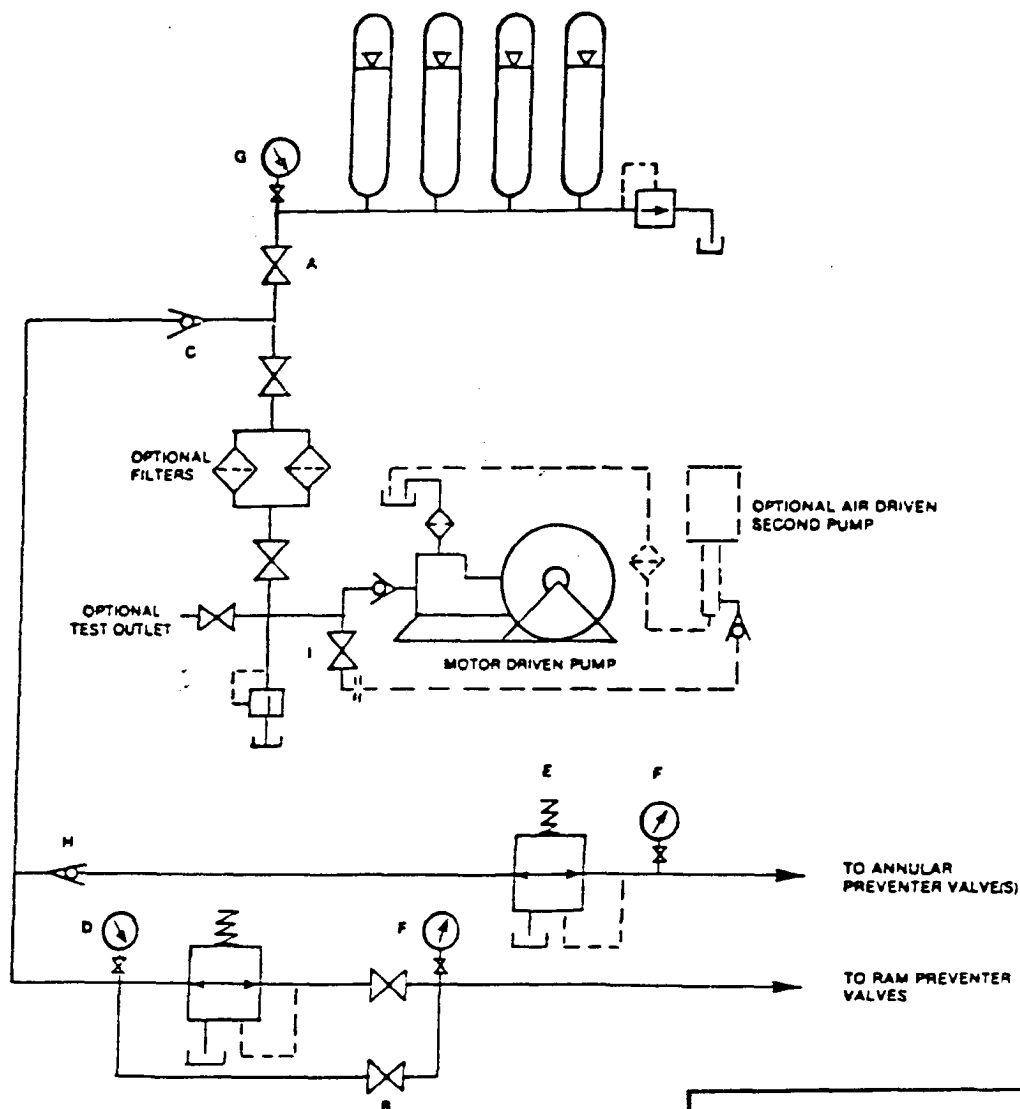


EXHIBIT "E-1"
CHOKE MANIFOLD & CLOSING UNIT

PURE RESOURCES, L.P.
STINKING DRAW FEDERAL # 1
UNIT "E" SECTION 13
T21S-R22E EDDY CO. NM

