

UNITED STATES
DEPARTMENT OF THE INTERIOR
BUREAU OF LAND MANAGEMENT

OCD-ARTESIA

FORM APPROVED
OMB NO. 1004-0137
Expires: January 31, 2004

WELL COMPLETION OR RECOMPLETION REPORT AND LOG

SEP 18 2009

5. Lease Serial No.
NM-047423

1a. Type of Well ☐ Oil Well ☒ Gas Well ☐ Dry Other
b. Type of Completion: ☒ New Well ☐ Work Over ☐ Deepen ☐ Plug Back ☐ Diff. Resvr.
Other _____

2. Name of Operator

Mewbourne Oil Company 14744

3. Address

PO Box 5270 Hobbs, NM 88241

3a. Phone No. (include area code)

575-393-5905

4. Location of Well (Report location clearly and in accordance with Federal requirements)*

At surface 1650' FNL & 990' FWL, Unit Letter E

At top prod interval reported below

At total depth



6. If Indian, Allottee or Tribe Name

7. Unit or CA Agreement Name and No.

8. Lease Name and Well No.

Hackberry Hills 1 Federal #1

9. API Well No.

30-015-36960

10. Field and Pool, or Exploratory

Revelation Morrow Gas 37606-83760

11. Sec., T., R., M., on Block and Survey
or Area Sec-1 - T22S-R25E

12. County or Parish

Eddy County

13. State

NM

14. Date Spudded

03/27/09

15. Date T.D. Reached

04/30/09

16. Date Completed 6/26/09

☐ D&A ☒ Ready to Prod.

17. Elevations (DF, RKB, RT, GL)*

3671' GL

18. Total Depth: MD 11450'
TVD19. Plug Back T.D.: MD 11374'
TVD20. Depth Bridge Plug Set: MD
TVD

21. Type Electric & Other Mechanical Logs Run (Submit copy of each)

GR / CBL / CND / DLL

22. Was well cored? ☒ No ☐ Yes (Submit analysis)
Was DST run? ☒ No ☐ Yes (Submit report)
Directional Survey? ☒ No ☐ Yes (Submit copy)

23. Casing and Liner Record (Report all strings set in well)

Hole Size	Size/Grade	Wt. (#/ft.)	Top (MD)	Bottom (MD)	Stage Cementer Depth	No. of Sk. & Type of Cement	Slurry Vol. (BBL)	Cement Top*	Amount Pulled
26"	20" J55	94	0	280'		630 - C	150	surface	NA
12 1/4"	9 5/8" J/N	40	0	2170'		975 - C	297	surface	NA
8 3/4"	4 1/2" P110	11.6	0	11450'		2150 - H	834	TOC @ 980	NA

24. Tubing Record

Size	Depth Set (MD)	Packer Depth (MD)	Size	Depth Set (MD)	Packer Depth (MD)	Size	Depth Set (MD)	Packer Depth (MD)
N/A								

25. Producing Intervals

Formation	TOP	Bottom	Perforated Interval	Size	No. Holes	Perf. Status
A) Morrow	10620'	11375'	11207' - 11284'	0.38"	36	open
B)						
C)						
D)						

26. Perforation Record

27. Acid, Fracture, Treatment, Cement Squeeze, Etc

Depth Interval	Amount and Type of Material
11207' - 11284'	Frac w/1000 gals 7 1/2% NeFe HCl acid & 48000 gals 40# 70Q Binary foam carrying 40000 18/40 Versaprop.

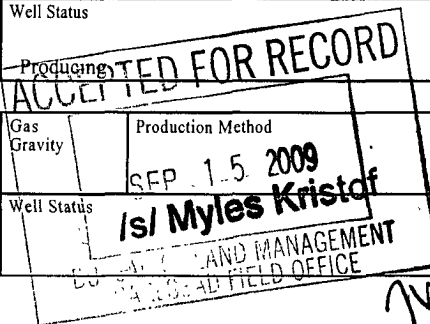
28. Production - Interval A

Date First Produced	Test Date	Hours Tested	Test Production	Oil BBL	Gas MCF	Water BBL	Oil Gravity Corr. API	Gas Gravity	Production Method
06/26/09	07/15/09	24	→	1	504	2	49	0.603	Flowing
Choke Size	Tbg. Press Flwg. SI	Csg Press	24 Hr. Rate	Oil BBL	Gas MCF	Water BBL	Gas: Oil Ratio	Well Status	
48/64"	NA	435	→	1	504	2	504000	Producing	

28a. Production - Interval B

Date First Produced	Test Date	Hours Tested	Test Production	Oil BBL	Gas MCF	Water BBL	Oil Gravity Corr. API	Gas Gravity	Production Method
		24	→						
Choke Size	Tbg. Press Flwg. SI	Call Press	24 Hr. Rate	Oil BBL	Gas MCF	Water BBL	Gas: Oil Ratio	Well Status	
			→						

(See instructions and spaces for additional data on next page)



28b. Production - Interval C

Date First Produced	Test Date	Hours Tested	Test Production →	Oil BBL	Gas MCF	Water BBL	Oil Gravity Corr. API	Gas Gravity	Production Method
Choke Size	Tbg Press Flwg. SI	Csg. Press	24 Hr. Rate →	Oil BBL	Gas MCF	Water BBL	Gas: Oil Ratio	Well Status	

28c. Production - Interval D

Date First Produced	Test Date	Hours Tested	Test Production →	Oil BBL	Gas MCF	Water BBL	Oil Gravity Corr. API	Gas Gravity	Production Method
Choke Size	Tbg Press Flwg. SI	Csg. Press	24 Hr. Rate →	Oil BBL	Gas MCF	Water BBL	Gas: Oil Ratio	Well Status	

29. Disposition of Gas (Sold used for fuel, vented, etc.)

SOLD

30. Summary of Porous Zones (Include Aquifers):

Show all important zones of porosity and contents thereof: Cored intervals and all drill-stem tests, including depth interval tested, cushion used, time tool open, flowing and shut-in pressures and recoveries.

31. Formation (Log) Markers

Formation	Top	Bottom	Descriptions, Contents, etc.	Name	Top Meas. Depth
Capitan	473				
Delaware	2405				
Bone Spring	4695				
Wolfcamp	8295				
Cisco	9441				
Canyon	9635				
Strawn	9798				
Atoka	10215				
Morrow	10620				
Barnett	11375				
TD	11450				
LTD	11446				

32. Additional remarks (include plugging procedure):

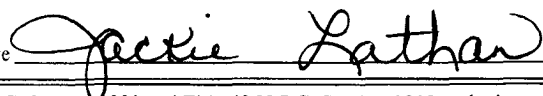
33. Circle enclosed attachments:

- ① Electrical/Mechanical Logs (1 full set req'd.) 2 Geologic Report 3 DST Report 4 Directional Survey
 5 Sundry Notice for plugging and cement verification 6 Core Analysis ⑦ Other: Dev Rpt, C104 & completion sundry

34 I hereby certify that the foregoing and attached information is complete and correct as determined from all available records (see attached instructions)*

Name (please print) Jackie Lathan Title Hobbs Regulatory

Signature



Date 07/17/09

Title 18 U.S.C. Section 1001 and Title 43 U.S.C. Section 1212 make it a crime for any person knowingly and willfully to make to any department or agency of the United States any false fictitious or fraudulent statements or representations as to any matter within its jurisdiction.