

District I
1625 N. French Dr., Hobbs, NM 88240
District II
1301 W. Grand Avenue, Artesia, NM 88210
District III
1000 Rio Brazos Road, Aztec, NM 87410
District IV
1220 S. St. Francis Dr., Santa Fe, NM 87505

State of New Mexico
Energy Minerals and Natural Resources
Department
Oil Conservation Division
1220 South St. Francis Dr.
Santa Fe, NM 87505

Form C-144
July 21, 2008

For temporary pits, closed-loop systems, and below-grade tanks, submit to the appropriate NMOCD District Office.
For permanent pits and exceptions submit to the Santa Fe Environmental Bureau office and provide a copy to the appropriate NMOCD District Office.

Pit, Closed-Loop System, Below-Grade Tank, or
Proposed Alternative Method Permit or Closure Plan Application

Type of action: ☐ Permit of a pit, closed-loop system, below-grade tank, or proposed alternative method
☒ Closure of a pit, closed-loop system, below-grade tank, or proposed alternative method
☐ Modification to an existing permit
☐ Closure plan only submitted for an existing permitted or non-permitted pit, closed-loop system, below-grade tank, or proposed alternative method

Instructions: Please submit one application (Form C-144) per individual pit, closed-loop system, below-grade tank or alternative request

Please be advised that approval of this request does not relieve the operator of liability should operations result in pollution of surface water, ground water or the environment. Nor does approval relieve the operator of its responsibility to comply with any other applicable governmental authority's rules, regulations or ordinances.

1. Operator: Forest Oil Corporation OGRID #:8041
Address: 3504 NW County Road Hobbs, NM
Facility or well name: FOC State B #12
API Number: 30-015-36256 OCD Permit Number:
U/L or Qtr/Qtr P Section 16 Township 17S Range 31E County: Eddy
Center of Proposed Design: Latitude Longitude NAD: ☐ 1927 ☐ 1983
Surface Owner: ☐ Federal ☐ State ☐ Private ☐ Tribal Trust or Indian Allotment

2. ☐ Pit: Subsection F or G of 19.15.17.11 NMAC
Temporary: ☒ Drilling ☐ Workover
☐ Permanent ☐ Emergency ☐ Cavitation ☐ P&A
X Lined ☐ Unlined Liner type: Thickness 12 mil ☐ LLDPE ☐ HDPE ☐ PVC ☐ Other
X String-Reinforced
Liner Seams: ☐ Welded ☐ Factory ☒ Other stitched Volume: 5000 bbl Dimensions: L95' x W86' x D6'

3. ☐ Closed-loop System: Subsection H of 19.15.17.11 NMAC
Type of Operation: ☐ P&A ☐ Drilling a new well ☐ Workover or Drilling (Applies to activities which require prior approval of a permit or notice of intent)
☐ Drying Pad ☐ Above Ground Steel Tanks ☐ Haul-off Bins ☐ Other
☐ Lined ☐ Unlined Liner type: Thickness mil ☐ LLDPE ☐ HDPE ☐ PVC ☐ Other
Liner Seams: ☐ Welded ☐ Factory ☐ Other

4. ☐ Below-grade tank: Subsection I of 19.15.17.11 NMAC
Volume: bbl Type of fluid:
Tank Construction material:
☐ Secondary containment with leak detection ☐ Visible sidewalls, liner, 6-inch lift and automatic overflow shut-off
☐ Visible sidewalls and liner ☐ Visible sidewalls only ☐ Other
Liner type: Thickness mil ☐ HDPE ☐ PVC ☐ Other

5. ☐ Alternative Method:
Submittal of an exception request is required. Exceptions must be submitted to the Santa Fe Environmental Bureau office for consideration of approval.

Final Closure Date 7/1/09 - Rule 50 Permitted -

6.

Fencing: Subsection D of 19.15.17.11 NMAC (*Applies to permanent pits, temporary pits, and below-grade tanks*)

- ☐ Chain link, six feet in height, two strands of barbed wire at top (*Required if located within 1000 feet of a permanent residence, school, hospital, institution or church*)
- ☐ Four foot height, four strands of barbed wire evenly spaced between one and four feet
- ☐ Alternate. Please specify _____

7.

Netting: Subsection E of 19.15.17.11 NMAC (*Applies to permanent pits and permanent open top tanks*)

- ☐ Screen ☐ Netting ☐ Other _____
- ☐ Monthly inspections (If netting or screening is not physically feasible)

8.

Signs: Subsection C of 19.15.17.11 NMAC

- ☐ 12"x 24", 2" lettering, providing Operator's name, site location, and emergency telephone numbers
- ☐ Signed in compliance with 19.15.3.103 NMAC

9.

Administrative Approvals and Exceptions:

Justifications and/or demonstrations of equivalency are required. Please refer to 19.15.17 NMAC for guidance.

Please check a box if one or more of the following is requested, if not leave blank:

- ☐ Administrative approval(s): Requests must be submitted to the appropriate division district or the Santa Fe Environmental Bureau office for consideration of approval.
- ☐ Exception(s): Requests must be submitted to the Santa Fe Environmental Bureau office for consideration of approval.

10.

Siting Criteria (regarding permitting): 19.15.17.10 NMAC

Instructions: The applicant must demonstrate compliance for each siting criteria below in the application. Recommendations of acceptable source material are provided below. Requests regarding changes to certain siting criteria may require administrative approval from the appropriate district office or may be considered an exception which must be submitted to the Santa Fe Environmental Bureau office for consideration of approval. Applicant must attach justification for request. Please refer to 19.15.17.10 NMAC for guidance. Siting criteria does not apply to drying pads or above-grade tanks associated with a closed-loop system.

Ground water is less than 50 feet below the bottom of the temporary pit, permanent pit, or below-grade tank. - NM Office of the State Engineer - iWATERS database search; USGS; Data obtained from nearby wells	<input type="checkbox"/> Yes <input type="checkbox"/> No
Within 300 feet of a continuously flowing watercourse, or 200 feet of any other significant watercourse or lakebed, sinkhole, or playa lake (measured from the ordinary high-water mark). - Topographic map; Visual inspection (certification) of the proposed site	<input type="checkbox"/> Yes <input type="checkbox"/> No
Within 300 feet from a permanent residence, school, hospital, institution, or church in existence at the time of initial application. (Applies to temporary, emergency, or cavitation pits and below-grade tanks) - Visual inspection (certification) of the proposed site; Aerial photo; Satellite image	<input type="checkbox"/> Yes <input type="checkbox"/> No <input type="checkbox"/> NA
Within 1000 feet from a permanent residence, school, hospital, institution, or church in existence at the time of initial application. (Applies to permanent pits) - Visual inspection (certification) of the proposed site; Aerial photo; Satellite image	<input type="checkbox"/> Yes <input type="checkbox"/> No <input type="checkbox"/> NA
Within 500 horizontal feet of a private, domestic fresh water well or spring that less than five households use for domestic or stock watering purposes, or within 1000 horizontal feet of any other fresh water well or spring, in existence at the time of initial application. - NM Office of the State Engineer - iWATERS database search; Visual inspection (certification) of the proposed site	<input type="checkbox"/> Yes <input type="checkbox"/> No
Within incorporated municipal boundaries or within a defined municipal fresh water well field covered under a municipal ordinance adopted pursuant to NMSA 1978, Section 3-27-3, as amended. - Written confirmation or verification from the municipality; Written approval obtained from the municipality	<input type="checkbox"/> Yes <input type="checkbox"/> No
Within 500 feet of a wetland. - US Fish and Wildlife Wetland Identification map; Topographic map; Visual inspection (certification) of the proposed site	<input type="checkbox"/> Yes <input type="checkbox"/> No
Within the area overlying a subsurface mine. - Written confirmation or verification or map from the NM EMNRD-Mining and Mineral Division	<input type="checkbox"/> Yes <input type="checkbox"/> No
Within an unstable area. - Engineering measures incorporated into the design; NM Bureau of Geology & Mineral Resources; USGS; NM Geological Society; Topographic map	<input type="checkbox"/> Yes <input type="checkbox"/> No
Within a 100-year floodplain. - FEMA map	<input type="checkbox"/> Yes <input type="checkbox"/> No

11. **Temporary Pits, Emergency Pits, and Below-grade Tanks Permit Application Attachment Checklist:** Subsection B of 19.15.17.9 NMAC
Instructions: Each of the following items must be attached to the application. Please indicate, by a check mark in the box, that the documents are attached.
- ☐ Hydrogeologic Report (Below-grade Tanks) - based upon the requirements of Paragraph (4) of Subsection B of 19.15.17.9 NMAC
 - ☐ Hydrogeologic Data (Temporary and Emergency Pits) - based upon the requirements of Paragraph (2) of Subsection B of 19.15.17.9 NMAC
 - ☐ Siting Criteria Compliance Demonstrations - based upon the appropriate requirements of 19.15.17.10 NMAC
 - ☐ Design Plan - based upon the appropriate requirements of 19.15.17.11 NMAC
 - ☐ Operating and Maintenance Plan - based upon the appropriate requirements of 19.15.17.12 NMAC
 - ☐ Closure Plan (Please complete Boxes 14 through 18, if applicable) - based upon the appropriate requirements of Subsection C of 19.15.17.9 NMAC and 19.15.17.13 NMAC
- ☐ Previously Approved Design (attach copy of design) API Number: _____ or Permit Number: _____

12. **Closed-loop Systems Permit Application Attachment Checklist:** Subsection B of 19.15.17.9 NMAC
Instructions: Each of the following items must be attached to the application. Please indicate, by a check mark in the box, that the documents are attached.
- ☐ Geologic and Hydrogeologic Data (only for on-site closure) - based upon the requirements of Paragraph (3) of Subsection B of 19.15.17.9
 - ☐ Siting Criteria Compliance Demonstrations (only for on-site closure) - based upon the appropriate requirements of 19.15.17.10 NMAC
 - ☐ Design Plan - based upon the appropriate requirements of 19.15.17.11 NMAC
 - ☐ Operating and Maintenance Plan - based upon the appropriate requirements of 19.15.17.12 NMAC
 - ☐ Closure Plan (Please complete Boxes 14 through 18, if applicable) - based upon the appropriate requirements of Subsection C of 19.15.17.9 NMAC and 19.15.17.13 NMAC
- ☐ Previously Approved Design (attach copy of design) API Number: _____
- ☐ Previously Approved Operating and Maintenance Plan API Number: _____ (Applies only to closed-loop system that use above ground steel tanks or haul-off bins and propose to implement waste removal for closure)

13. **Permanent Pits Permit Application Checklist:** Subsection B of 19.15.17.9 NMAC
Instructions: Each of the following items must be attached to the application. Please indicate, by a check mark in the box, that the documents are attached.
- ☐ Hydrogeologic Report - based upon the requirements of Paragraph (1) of Subsection B of 19.15.17.9 NMAC
 - ☐ Siting Criteria Compliance Demonstrations - based upon the appropriate requirements of 19.15.17.10 NMAC
 - ☐ Climatological Factors Assessment
 - ☐ Certified Engineering Design Plans - based upon the appropriate requirements of 19.15.17.11 NMAC
 - ☐ Dike Protection and Structural Integrity Design - based upon the appropriate requirements of 19.15.17.11 NMAC
 - ☐ Leak Detection Design - based upon the appropriate requirements of 19.15.17.11 NMAC
 - ☐ Liner Specifications and Compatibility Assessment - based upon the appropriate requirements of 19.15.17.11 NMAC
 - ☐ Quality Control/Quality Assurance Construction and Installation Plan
 - ☐ Operating and Maintenance Plan - based upon the appropriate requirements of 19.15.17.12 NMAC
 - ☐ Freeboard and Overtopping Prevention Plan - based upon the appropriate requirements of 19.15.17.11 NMAC
 - ☐ Nuisance or Hazardous Odors, including H₂S, Prevention Plan
 - ☐ Emergency Response Plan
 - ☐ Oil Field Waste Stream Characterization
 - ☐ Monitoring and Inspection Plan
 - ☐ Erosion Control Plan
 - ☐ Closure Plan - based upon the appropriate requirements of Subsection C of 19.15.17.9 NMAC and 19.15.17.13 NMAC

14. **Proposed Closure:** 19.15.17.13 NMAC
Instructions: Please complete the applicable boxes, Boxes 14 through 18, in regards to the proposed closure plan.
- Type: ☐ Drilling ☐ Workover ☐ Emergency ☐ Cavitation ☐ P&A ☐ Permanent Pit ☐ Below-grade Tank ☐ Closed-loop System
☐ Alternative
- Proposed Closure Method: ☐ Waste Excavation and Removal
☐ Waste Removal (Closed-loop systems only)
☐ On-site Closure Method (Only for temporary pits and closed-loop systems)
☐ In-place Burial ☐ On-site Trench Burial
☐ Alternative Closure Method (Exceptions must be submitted to the Santa Fe Environmental Bureau for consideration)

15. **Waste Excavation and Removal Closure Plan Checklist:** (19.15.17.13 NMAC) *Instructions: Each of the following items must be attached to the closure plan. Please indicate, by a check mark in the box, that the documents are attached.*
- ☐ Protocols and Procedures - based upon the appropriate requirements of 19.15.17.13 NMAC
 - ☐ Confirmation Sampling Plan (if applicable) - based upon the appropriate requirements of Subsection F of 19.15.17.13 NMAC
 - ☐ Disposal Facility Name and Permit Number (for liquids, drilling fluids and drill cuttings)
 - ☐ Soil Backfill and Cover Design Specifications - based upon the appropriate requirements of Subsection H of 19.15.17.13 NMAC
 - ☐ Re-vegetation Plan - based upon the appropriate requirements of Subsection I of 19.15.17.13 NMAC
 - ☐ Site Reclamation Plan - based upon the appropriate requirements of Subsection G of 19.15.17.13 NMAC

16.

Waste Removal Closure For Closed-loop Systems That Utilize Above Ground Steel Tanks or Haul-off Bins Only: (19.15.17.13.D NMAC)

Instructions: Please identify the facility or facilities for the disposal of liquids, drilling fluids and drill cuttings. Use attachment if more than two facilities are required.

Disposal Facility Name: _____ Disposal Facility Permit Number: _____

Disposal Facility Name: _____ Disposal Facility Permit Number: _____

Will any of the proposed closed-loop system operations and associated activities occur on or in areas that *will not* be used for future service and operations?

☐ Yes (If yes, please provide the information below) ☐ No

Required for impacted areas which will not be used for future service and operations:

☐ Soil Backfill and Cover Design Specifications - based upon the appropriate requirements of Subsection H of 19.15.17.13 NMAC

☐ Re-vegetation Plan - based upon the appropriate requirements of Subsection I of 19.15.17.13 NMAC

☐ Site Reclamation Plan - based upon the appropriate requirements of Subsection G of 19.15.17.13 NMAC

17.

Siting Criteria (regarding on-site closure methods only): 19.15.17.10 NMAC

Instructions: Each siting criteria requires a demonstration of compliance in the closure plan. Recommendations of acceptable source material are provided below. Requests regarding changes to certain siting criteria may require administrative approval from the appropriate district office or may be considered an exception which must be submitted to the Santa Fe Environmental Bureau office for consideration of approval. Justifications and/or demonstrations of equivalency are required. Please refer to 19.15.17.10 NMAC for guidance.

Ground water is less than 50 feet below the bottom of the buried waste.

- NM Office of the State Engineer - iWATERS database search; USGS; Data obtained from nearby wells

☐ Yes ☐ No

☐ NA

Ground water is between 50 and 100 feet below the bottom of the buried waste

- NM Office of the State Engineer - iWATERS database search; USGS; Data obtained from nearby wells

☐ Yes ☐ No

☐ NA

Ground water is more than 100 feet below the bottom of the buried waste.

- NM Office of the State Engineer - iWATERS database search; USGS; Data obtained from nearby wells

☐ Yes ☐ No

☐ NA

Within 300 feet of a continuously flowing watercourse, or 200 feet of any other significant watercourse or lakebed, sinkhole, or playa lake (measured from the ordinary high-water mark).

- Topographic map; Visual inspection (certification) of the proposed site

☐ Yes ☐ No

Within 300 feet from a permanent residence, school, hospital, institution, or church in existence at the time of initial application.

- Visual inspection (certification) of the proposed site; Aerial photo; Satellite image

☐ Yes ☐ No

Within 500 horizontal feet of a private, domestic fresh water well or spring that less than five households use for domestic or stock watering purposes, or within 1000 horizontal feet of any other fresh water well or spring, in existence at the time of initial application.

- NM Office of the State Engineer - iWATERS database; Visual inspection (certification) of the proposed site

☐ Yes ☐ No

Within incorporated municipal boundaries or within a defined municipal fresh water well field covered under a municipal ordinance adopted pursuant to NMSA 1978, Section 3-27-3, as amended.

- Written confirmation or verification from the municipality; Written approval obtained from the municipality

☐ Yes ☐ No

Within 500 feet of a wetland.

- US Fish and Wildlife Wetland Identification map; Topographic map; Visual inspection (certification) of the proposed site

☐ Yes ☐ No

Within the area overlying a subsurface mine.

- Written confirmation or verification or map from the NM EMNRD-Mining and Mineral Division

☐ Yes ☐ No

Within an unstable area.

- Engineering measures incorporated into the design; NM Bureau of Geology & Mineral Resources; USGS; NM Geological Society; Topographic map

☐ Yes ☐ No

Within a 100-year floodplain.

- FEMA map

☐ Yes ☐ No

18.

On-Site Closure Plan Checklist: (19.15.17.13 NMAC) **Instructions:** Each of the following items must be attached to the closure plan. Please indicate, by a check mark in the box, that the documents are attached.

☐ Siting Criteria Compliance Demonstrations - based upon the appropriate requirements of 19.15.17.10 NMAC

☐ Proof of Surface Owner Notice - based upon the appropriate requirements of Subsection F of 19.15.17.13 NMAC

☐ Construction/Design Plan of Burial Trench (if applicable) based upon the appropriate requirements of 19.15.17.11 NMAC

☐ Construction/Design Plan of Temporary Pit (for in-place burial of a drying pad) - based upon the appropriate requirements of 19.15.17.11 NMAC

☐ Protocols and Procedures - based upon the appropriate requirements of 19.15.17.13 NMAC

☐ Confirmation Sampling Plan (if applicable) - based upon the appropriate requirements of Subsection F of 19.15.17.13 NMAC

☐ Waste Material Sampling Plan - based upon the appropriate requirements of Subsection F of 19.15.17.13 NMAC

☐ Disposal Facility Name and Permit Number (for liquids, drilling fluids and drill cuttings or in case on-site closure standards cannot be achieved)

☐ Soil Cover Design - based upon the appropriate requirements of Subsection H of 19.15.17.13 NMAC

☐ Re-vegetation Plan - based upon the appropriate requirements of Subsection I of 19.15.17.13 NMAC

☐ Site Reclamation Plan - based upon the appropriate requirements of Subsection G of 19.15.17.13 NMAC

19.

Operator Application Certification:

I hereby certify that the information submitted with this application is true, accurate and complete to the best of my knowledge and belief.

Name (Print): _____ Title: _____

Signature: _____ Date: _____

e-mail address: _____ Telephone: _____

20.

OCD Approval: ☐ Permit Application (including closure plan) ☐ Closure Plan (only) ☐ OCD Conditions (see attachment)

OCD Representative Signature: _____ **Approval Date:** _____

Title: _____ **OCD Permit Number:** _____

21.

Closure Report (required within 60 days of closure completion): Subsection K of 19.15.17.13 NMAC

Instructions: Operators are required to obtain an approved closure plan prior to implementing any closure activities and submitting the closure report. The closure report is required to be submitted to the division within 60 days of the completion of the closure activities. Please do not complete this section of the form until an approved closure plan has been obtained and the closure activities have been completed.

X Closure Completion Date: 1 July 09

22.

Closure Method:

X Waste Excavation and Removal ☐ On-Site Closure Method ☐ Alternative Closure Method ☐ Waste Removal (Closed-loop systems only)
☐ If different from approved plan, please explain.

23.

Closure Report Regarding Waste Removal Closure For Closed-loop Systems That Utilize Above Ground Steel Tanks or Haul-off Bins Only:

Instructions: Please identify the facility or facilities for where the liquids, drilling fluids and drill cuttings were disposed. Use attachment if more than two facilities were utilized.

Disposal Facility Name: _____ Disposal Facility Permit Number: _____

Disposal Facility Name: _____ Disposal Facility Permit Number: _____

Were the closed-loop system operations and associated activities performed on or in areas that *will not* be used for future service and operations?

☐ Yes (If yes, please demonstrate compliance to the items below) ☐ No

Required for impacted areas which will not be used for future service and operations:

- ☐ Site Reclamation (Photo Documentation)
☐ Soil Backfilling and Cover Installation
☐ Re-vegetation Application Rates and Seeding Technique

24.

Closure Report Attachment Checklist: *Instructions: Each of the following items must be attached to the closure report. Please indicate, by a check mark in the box, that the documents are attached.*

- X Proof of Closure Notice (surface owner and division)
☐ Proof of Deed Notice (required for on-site closure)
X Plot Plan (for on-site closures and temporary pits)
X Confirmation Sampling Analytical Results (if applicable)
☐ Waste Material Sampling Analytical Results (required for on-site closure)
X Disposal Facility Name and Permit Number
X Soil Backfilling and Cover Installation
X Re-vegetation Application Rates and Seeding Technique
X Site Reclamation (Photo Documentation)

On-site Closure Location: Latitude _____ Longitude _____ NAD: ☐ 1927 ☐ 1983

25.

Operator Closure Certification:

I hereby certify that the information and attachments submitted with this closure report is true, accurate and complete to the best of my knowledge and belief. I also certify that the closure complies with all applicable closure requirements and conditions specified in the approved closure plan.

Name (Print): Ron Ragland R. Ragland Title: Senior Production Foreman _____

Signature: _____ Date: _____

e-mail address: rdragland@forestoil.com Telephone: 575 392 9797 _____

Accepted for record
 NMOCD MA



Attachment 9

District I
1625 N. French Dr., Hobbs, NM 88240
District II
1301 W. Grand Avenue, Artesia, NM 88210
District III
1000 Rio Brazos Road, Aztec, NM 87410
District IV
1220 S. St. Francis Dr., Santa Fe, NM 87505

State of New Mexico
Energy Minerals and Natural Resources

Oil Conservation Division
1220 South St. Francis Dr.
Santa Fe, NM 87505

Form C-141
Revised October 10, 2003

Submit 2 Copies to appropriate
District Office in accordance
with Rule 116 on back
side of form

Release Notification and Corrective Action

OPERATOR

X Initial Report ☐ Final Report

Name of Company Forest Oil Corporation	Contact Ron Ragland
Address 3504 NW County Road, Hobbs, Nm 88241	Telephone No. 575 392 9797
Facility Name FOC State B #12	Facility Type Producing Well

Surface Owner State	Mineral Owner	Lease No. API 30-15-36256
---------------------	---------------	---------------------------

LOCATION OF RELEASE

Unit Letter	Section	Township	Range	Feet from the	North/South Line	Feet from the	East/West Line	County
P	16	17S	31E					Eddy

Latitude _____ Longitude _____

NATURE OF RELEASE

Type of Release Produced Water	Volume of Release Unknown	Volume Recovered Unknown
Source of Release Reserve Pit	Date and Hour of Occurrence Unknown	Date and Hour of Discovery 1Jun09
Was Immediate Notice Given? <input type="checkbox"/> Yes X No <input type="checkbox"/> Not Required	If YES, To Whom? N/A	
By Whom? N/A	Date and Hour N/A	
Was a Watercourse Reached? <input type="checkbox"/> Yes X No	If YES, Volume Impacting the Watercourse. N/A	

If a Watercourse was Impacted, Describe Fully.*

Describe Cause of Problem and Remedial Action Taken.*

A liner failure in the drilling reserve pit caused a produced water release. This release was detected during the pit closure process by way of soil analysis (see Attached). Further excavation will continue until soil samples indicate a chloride level at or below the NM OCD limits.

Describe Area Affected and Cleanup Action Taken.*

I hereby certify that the information given above is true and complete to the best of my knowledge and understand that pursuant to NMOCD rules and regulations all operators are required to report and/or file certain release notifications and perform corrective actions for releases which may endanger public health or the environment. The acceptance of a C-141 report by the NMOCD marked as "Final Report" does not relieve the operator of liability should their operations have failed to adequately investigate and remediate contamination that pose a threat to ground water, surface water, human health or the environment. In addition, NMOCD acceptance of a C-141 report does not relieve the operator of responsibility for compliance with any other federal, state, or local laws and/or regulations.

Signature: <i>RD Ragland</i>		OIL CONSERVATION DIVISION	
Printed Name: Ron Ragland		Approved by District Supervisor <i>Mike Brannan</i>	
Title: Senior Production Foreman		Approval Date:	Expiration Date:
E-mail Address: rdragland@forestoil.com		Conditions of Approval: <i>REMEDATION PER NMOCD RULES & GUIDELINES</i>	
Date:	Phone: 575 392 9797	Attached <input type="checkbox"/>	

* Attach Additional Sheets If Necessary

District I
1625 N. French Dr., Hobbs, NM 88240
District II
1301 W. Grand Avenue, Artesia, NM 88210
District III
1000 Rio Brazos Road, Aztec, NM 87410
District IV
1220 S. St. Francis Dr., Santa Fe, NM 87505

State of New Mexico
Energy Minerals and Natural Resources

Oil Conservation Division
1220 South St. Francis Dr.
Santa Fe, NM 87505

Form C-141
Revised October 10, 2003

Submit 2 Copies to appropriate
District Office in accordance
with Rule 116 on back
side of form

Release Notification and Corrective Action

OPERATOR

Initial Report ☒ Final Report

Name of Company Forest Oil Corporation	Contact Ron Ragland
Address 3504 NW County Road, Hobbs, Nm 88241	Telephone No. 575 392 9797
Facility Name FOC State B #12	Facility Type Producing Well

Surface Owner State	Mineral Owner	Lease No. API 30-15-36256
---------------------	---------------	---------------------------

LOCATION OF RELEASE

Unit Letter	Section	Township	Range	Feet from the	North/South Line	Feet from the	East/West Line	County
P	16	17S	31E					Eddy

Latitude _____ Longitude _____

NATURE OF RELEASE

Type of Release Produced Water	Volume of Release Unknown	Volume Recovered Unknown
Source of Release Reserve Pit	Date and Hour of Occurrence Unknown	Date and Hour of Discovery 1Jun09
Was Immediate Notice Given? <input type="checkbox"/> Yes <input checked="" type="checkbox"/> No <input type="checkbox"/> Not Required	If YES, To Whom? N/A	
By Whom? N/A	Date and Hour N/A	
Was a Watercourse Reached? <input type="checkbox"/> Yes <input checked="" type="checkbox"/> No	If YES, Volume Impacting the Watercourse. N/A	

If a Watercourse was Impacted, Describe Fully.*

Describe Cause of Problem and Remedial Action Taken.*

A liner failure in the drilling reserve pit caused a produced water release. This release was detected during the pit closure process by way of soil analysis (see Attached). Further excavation will continue until soil samples indicate a chloride level at or below the NM OCD limits.

Describe Area Affected and Cleanup Action Taken.*

Excavation continued to a depth of 16'BGS at which point a 5 point composite soil sample was obtained and sent to Cardinal Lab for analysis. Lab results (see attached) indicated a chloride level <1000ppm. Mike Bratcher was notified of the results and he advised that this was good for closure and he also asked that I obtain another soil sample to determine the point at which the levels dropped to <250ppm. This sample was obtained at 18'BGS and the results are attached also. Closure of the pit will proceed as per the approved work plan.

I hereby certify that the information given above is true and complete to the best of my knowledge and understand that pursuant to NMOCD rules and regulations all operators are required to report and/or file certain release notifications and perform corrective actions for releases which may endanger public health or the environment. The acceptance of a C-141 report by the NMOCD marked as "Final Report" does not relieve the operator of liability should their operations have failed to adequately investigate and remediate contamination that pose a threat to ground water, surface water, human health or the environment. In addition, NMOCD acceptance of a C-141 report does not relieve the operator of responsibility for compliance with any other federal, state, or local laws and/or regulations.

OIL CONSERVATION DIVISION

Signature:	Approved by District Supervisor <i>[Signature]</i>		
Printed Name: Ron Ragland	Approval Date: DEC 08 2009	Expiration Date: N/A	Attached <input type="checkbox"/>
Title: Senior Production Foreman	Conditions of Approval: N/A		
E-mail Address: rdragland@forestoil.com			
Date:	Phone: 575 392 9797		

* Attach Additional Sheets If Necessary

Forest Oil Corporation

Pit Closure Summary

FOC State B No. 12

API 30-015-36256

Eddy County, NM

UL. P, Sec. 16, T17S, R31E

GPS N32 49.674 W103 51.984

Start date: 12May09

Finish date: 1July09

Prepared By: Vernon K. Black

Environmental Technician

Hungry Horse Environmental, LLC

PO Box 1058

Hobbs, NM 88240

(575)-393-3386



Table of Contents

1.0 Introduction	pg. 1
2.0 Area Description	pg. 1
3.0 Pit Closure Process	pg. 1
Diagram of Pit/Location Area	pg. 2

Attachments

Attachment 1 – Overhead View
Attachment 2 – Lab Analytical & Chain of Custody
Attachment 3 – One call
Attachment 4 – Photos of Progress
Attachment 5 – Proof of Closure Notice
Attachment 6 – Plot Plan
Attachment 7 – C 144 w/Closure Plan
Attachment 8 – C 144 Final
Attachment 9 – C141 Initial & Final Report

1.0 Introduction

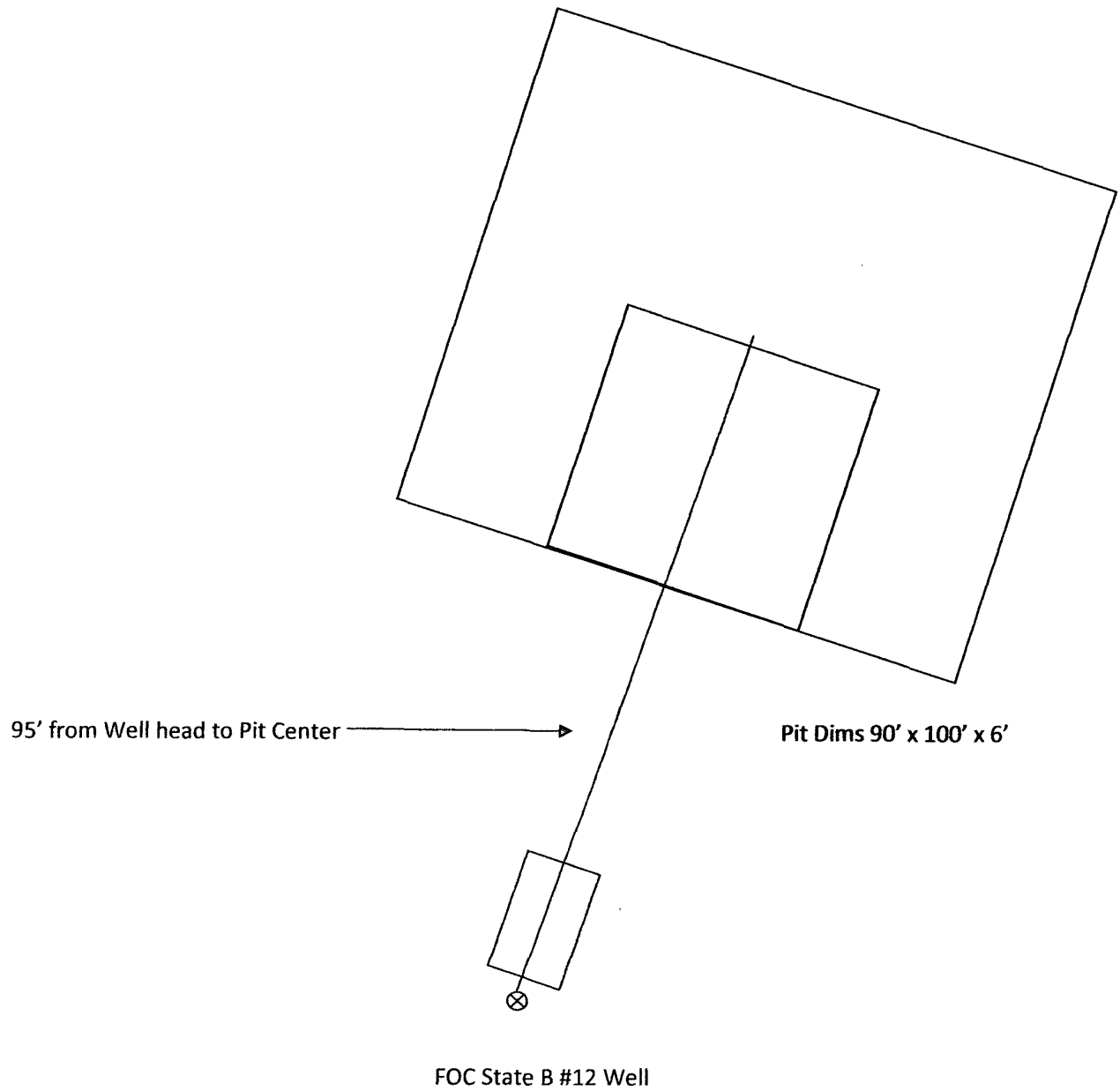
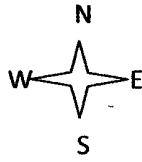
This report addresses the drilling reserve pit closure at Forest Oil Corporation's FOC B State #12 well. Analytical results, photos of the project, an overhead map, NM OCD required documents, and a general scope of the work conducted are included in this document as attachments. The project manager for Hungry Horse Environmental Services was Shanon Rusk.

2.0 Area Description

This geographical area consists primarily of sandy topsoil with gentle rolling sand dunes. Vegetation present in this area is mesquite, yucca plants, and a variety of range grass and weeds. The depth to the ground water is >200' based on the Eddy County County Depth to Ground Water Map. There are no known water wells or surface bodies of water within a half of a mile of this location. This location is in rural Eddy County, NM approximately six miles west of Maljamar north of Highway 82.

3.0 Pit Closure Process

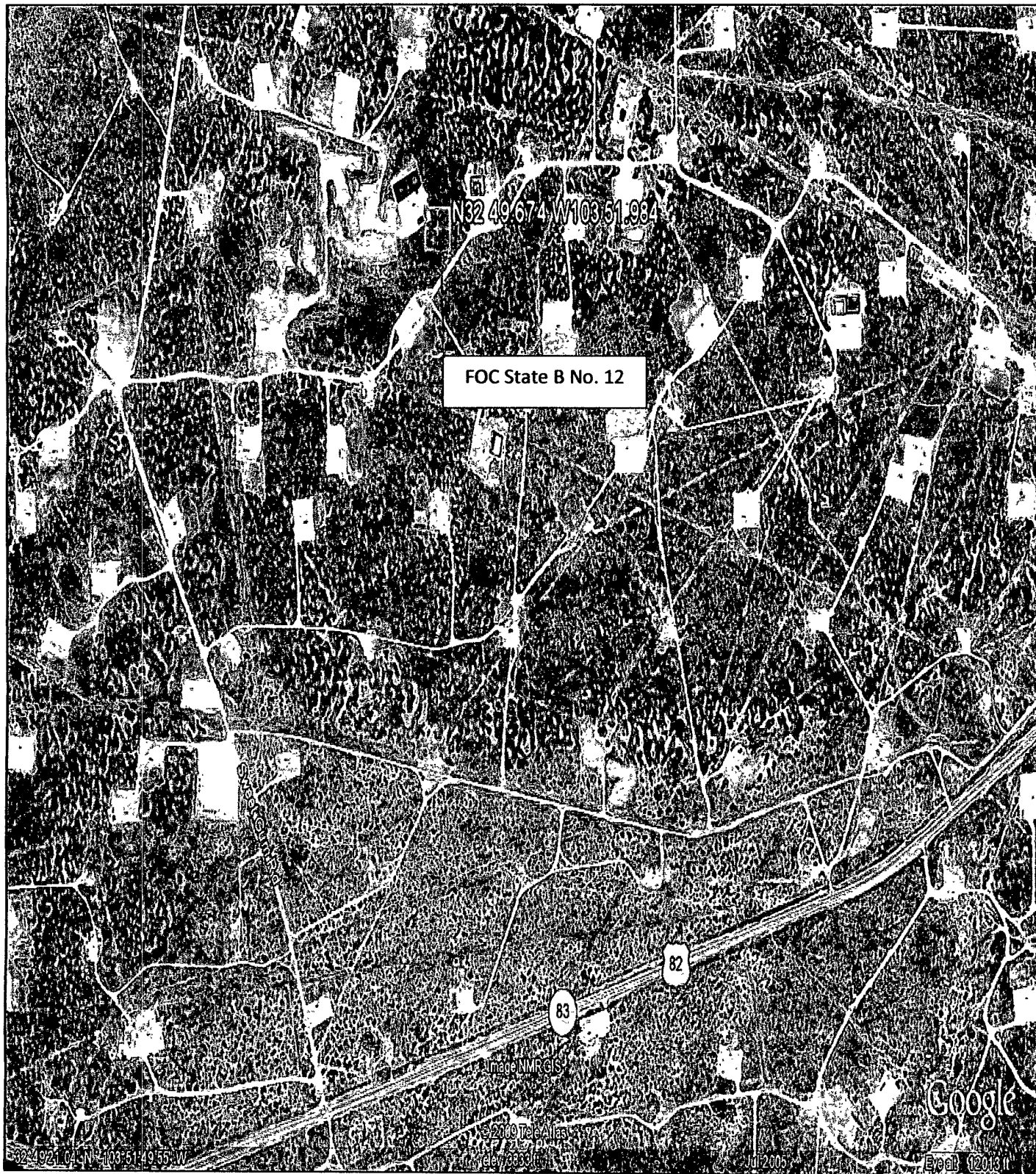
This pit closure was accomplished using the Waste Excavation and Removal Process. The drilling reserve pit was 100'L x 90'W X 6'D and was lined with a synthetic liner. The pit contents, along with the liner, and two feet of material from underneath the liner were excavated and removed. All material removed was disposed of at CRI (NM OCD Order R9166). A five-point composite soil sample was obtained from the pit and taken to Cardinal Labs for analysis. Lab results indicated that TPH, GRO/DRO, Benzene, and BTEX were all well below the limits set forth by NM OCD, however the chloride level was elevated. Further excavation continued with soil samples being obtained and field tested at various intervals. At 16' BGS another 5 point composite soil sample was obtained and analyzed. Lab results indicated a chloride level <1000ppm. Mike Bratcher, NM OCD, was notified and requested delineation continue to determine the depth where the chloride level dropped to <250ppm. A sample was obtained and analyzed from 18'BGS. Lab results indicated a chloride level of <250ppm. Mike Bratcher was notified of the results and advised that pit closure could continue as per the approved work plan. The final depth of the excavation was 16'. The excavated area was backfilled using clean material from a nearby source, contoured to match the surrounding terrain and re-seeded.



Note: Drawing is not to scale



Attachment 1





Attachment 2



PHONE (575) 393-2328 • 101 E. MARLAND • HOBBS, NM 88240

ANALYTICAL RESULTS FOR
HUNGRY HORSE ENVIRONMENTAL SERVICES
ATTN: VERNON K. BLACK
P.O. BOX 1058
HOBBS, NM 88241
FAX TO: (575) 391-4585


Receiving Date: 05/13/09
Reporting Date: 05/19/09
Project Owner: FOREST OIL
Project Name: FOC STATE B-12
Project Location: EDDY COUNTY, NM

Sampling Date: 05/13/09
Sample Type: SOIL
Sample Condition: COOL & INTACT
Sample Received By: ML
Analyzed By: AB/ZL/HM

LAB NO.	SAMPLE ID	GRO (C ₆ -C ₁₀) (mg/kg)	DRO (>C ₁₀ -C ₂₈) (mg/kg)	BENZENE (mg/kg)	TOLUENE (mg/kg)	ETHYL BENZENE (mg/kg)	TOTAL XYLENES (mg/kg)	CI* (mg/kg)
ANALYSIS DATE		05/14/09	05/14/09	05/18/09	05/18/09	05/18/09	05/18/09	05/14/09
H17422-1	PIT COMPOSITE 7" BGS	<10.0	<10.0	<0.050	<0.050	<0.050	<0.300	10,600
Quality Control		525	524	0.060	0.052	0.045	0.132	500
True Value QC		500	500	0.050	0.050	0.050	0.150	500
% Recovery		105	105	120	104	90.0	88.0	100
Relative Percent Difference		3.0	0.4	14.8	3.8	4.3	5.0	<0.1

METHODS: TPH GRO & DRO - EPA SW-846 8015 M, BTEX - SW-846 8021B; CI-: Std. Methods 4500-CI-B
*Analysis performed on a 1:4 w:v aqueous extract.

TEXAS NELAP ACCREDITATION T104704398-08-TX FOR BENZENE, TOLUENE, ETHYL BENZENE,
AND TOTAL XYLENES.


Lab Director

05/19/09
Date

FILE COPY

H17422 TBCL HHE

PLEASE NOTE: Liability and Damages. Cardinal's liability and client's exclusive remedy for any claim arising, whether based in contract or tort, shall be limited to the amount paid by client for analyses. All claims, including those for negligence and any other cause whatsoever shall be deemed waived unless made in writing and received by Cardinal within thirty (30) days after completion of the applicable service. In no event shall Cardinal be liable for incidental or consequential damages, including, without limitation, business interruptions, loss of use, or loss of profits incurred by client, its subsidiaries, affiliates or successors arising out of or related to the performance of services hereunder by Cardinal, regardless of whether such claim is based upon any of the above-stated reasons or otherwise. Results relate only to the samples identified above. This report shall not be reproduced except in full with written approval of Cardinal Laboratories.



CARDINAL LABORATORIES

101 East Marland, Hobbs, NM 88240

(575) 393-2326 Fax (575) 393-2476

Page ____ of ____

Company Name: Hungry Horse Environmental Services Project Manager: Vernon K. Black Address: PO Box 1058 City: Hobbs State: NM Zip: 88241 Phone #: 575-393-3386 Fax #: 575-391-4585 Project #: Project Owner: Forest Oil Project Name: POC State B-12 Project Location: Eddy County NM Sampler Name: Vernon K. Black				BILL TO P.O. #: Company: SAME Attn: Address: City: State: Zip: Phone #: Fax #:		ANALYSIS REQUEST																		
FOR LAB USE ONLY		() GRAB OR () COMP. # CONTAINERS	MATRIX GROUNDWATER WASTEWATER SOIL OIL SLUDGE OTHER				PRESERV. ACID/BASE ICE / COOL OTHER		SAMPLING DATE TIME		chlorides BTEX TPH GAO/DRO													
Lab I.D. H17422-1	Sample I.D. Pit Composite 7' BGS		<input checked="" type="checkbox"/>	<input type="checkbox"/>	<input type="checkbox"/>	<input type="checkbox"/>	<input type="checkbox"/>	<input checked="" type="checkbox"/>	<input type="checkbox"/>	<input type="checkbox"/>	13MAR 1500	<input checked="" type="checkbox"/>	<input checked="" type="checkbox"/>	<input checked="" type="checkbox"/>	<input checked="" type="checkbox"/>	<input type="checkbox"/>	<input type="checkbox"/>	<input type="checkbox"/>	<input type="checkbox"/>	<input type="checkbox"/>	<input type="checkbox"/>	<input type="checkbox"/>	<input type="checkbox"/>	<input type="checkbox"/>

PLEASE NOTE: Liability and Damages: Cardinal's liability and client's exclusive remedy for any claim arising whether based in contract or tort, shall be limited to the amount paid by the client for the analysis. All claims, including those for negligence and any other cause whatsoever shall be deemed waived unless made in writing and received by Cardinal within 30 days after completion of the applicable service. In no event shall Cardinal be liable for incidental or consequential damages, including without limitation, business interruptions, loss of use, or loss of profits incurred by client, its subsidiaries, affiliates or successors arising out of or related to the performance of services hereunder by Cardinal, regardless of whether such claim is based upon any of the above stated reasons or otherwise.

Terms and Conditions: Interest will be charged on all accounts more than 30 days past due at the rate of 24% per annum from the original date of invoice, and all costs of collections, including attorney's fees.

Sampler Relinquished: Date: 13MAR99 Time: 1630 Relinquished By: <i>[Signature]</i> Delivered By: (Circle One) Sampler - UPS - Bus - Other:	Received By: Date: 13MAR99 Time: 1630 Received By: <i>[Signature]</i> Temp: 1630 Sample Condition Cool Intact <input checked="" type="checkbox"/> Yes <input checked="" type="checkbox"/> No <input type="checkbox"/> Yes <input type="checkbox"/> No CHECKED BY: <i>[Signature]</i>	Phone Result: <input type="checkbox"/> No Fax Result: <input type="checkbox"/> No REMARKS: Add'l Phone #: Add'l Fax #:
--	---	---

† Cardinal cannot accept verbal changes. Please fax written changes to 575-393-2476.

FILE COPY



ARDINAL LABORATORIES

PHONE (575) 393-2326 • 101 E. MARLAND • HOBBS, NM 88240

ANALYTICAL RESULTS FOR
HUNGRY HORSE ENVIRONMENTAL SERVICES
ATTN: VERNON K. BLACK
P.O. BOX 1058
HOBBS, NM 88241
FAX TO: (575) 391-4585

Receiving Date: 06/01/09
Reporting Date: 06/05/09
Project Owner: FOREST OIL
Project Name: FOC STATE B-12
Project Location: EDDY COUNTY, NM

Sampling Date: 06/01/09
Sample Type: SOIL
Sample Condition: COOL & INTACT @ 6°C
Sample Received By: ML
Analyzed By: AB/ZL

LAB NO	SAMPLE ID	GRO (C ₆ -C ₁₀) (mg/kg)	DRO (>C ₁₀ -C ₂₈) (mg/kg)	BENZENE (mg/kg)	TOLUENE (mg/kg)	ETHYL BENZENE (mg/kg)	TOTAL XYLENES (mg/kg)	CI* (mg/kg)
--------	-----------	--	--	--------------------	--------------------	-----------------------------	-----------------------------	----------------

ANALYSIS DATE:	06/03/09	06/03/09	06/02/09	06/02/09	06/02/09	06/02/09	06/03/09
H17526-1 SPT COMPOSITE 14' BGS	<10.0	<10.0	<0.050	<0.050	<0.050	<0.300	4,160
RESERVE PIT							
Quality Control	486	453	0.059	0.048	0.043	0.129	500
True Value QC	500	500	0.050	0.050	0.050	0.150	500
% Recovery	97.2	90.6	118	98.0	86.0	86.0	100
Relative Percent Difference	2.5	0.6	19.7	4.2	4.3	3.6	2.0

METHODS: TPH GRO & DRO - EPA SW-846 8015 M; BTEX - SW-846 8021B; CI- Std. Methods 4500-CI-B

*Analysis performed on a 1:4 w/v aqueous extract. Reported on wet weight.

TPH GRO/DRO and Chloride are not NELAP accredited.

TEXAS NELAP ACCREDITATION T104704398-08-TX FOR BENZENE, TOLUENE, ETHYL BENZENE,
AND TOTAL XYLENES.

Lab Director

Date

H17526 TBCL HHE

PLEASE NOTE: Liability and Damages. Cardinal's liability and client's exclusive remedy for any claim arising, whether based in contract or tort, shall be limited to the amount paid by client for analyses. All claims, including those for negligence and any other cause whatsoever shall be deemed waived unless made in writing and received by Cardinal within thirty (30) days after completion of the applicable service. In no event shall Cardinal be liable for incidental or consequential damages, including, without limitation, business interruptions, loss of use, or loss of profits incurred by client, its subsidiaries, affiliates or successors arising out of or related to the performance of services hereunder by Cardinal regardless of whether such claim is based upon any of the above-stated reasons or otherwise. Results relate only to the samples identified above. This report shall not be reproduced except in full with written approval of Cardinal Laboratories.



PHONE (575) 393-2326 • 101 E. MARLAND • HOBBS, NM 88240

ANALYTICAL RESULTS FOR
HUNGRY HORSE ENVIRONMENTAL SERVICES
ATTN: VERNON K. BLACK
P.O. BOX 1058
HOBBS, NM 88241
FAX TO: (575) 391-4585

Receiving Date: 06/01/09
Reporting Date: 06/08/09
Project Owner: FOREST OIL
Project Name: FOC STATE B-12
Project Location: EDDY COUNTY, NM

Sampling Date: 06/01/09
Sample Type: SOIL
Sample Condition: COOL & INTACT @ 6°C
Sample Received By: ML
Analyzed By: AB

LAB NUMBER SAMPLE ID

418.1
TOTAL
TPH
(mg/kg)

ANALYSIS DATE	06/08/09
H17526-1 5PT COMPOSITE 14' BGS	<100
RESERVE PIT	
Quality Control	321
True Value QC	300
% Recovery	107
Relative Percent Difference	2.9

METHODS EPA 418.1. Reported on wet weight. Analyte not
NELAP accredited.

Chemist

Date

H17526 THROUGH H17534 418.1 HHE

PLEASE NOTE: Liability and Damages: Cardinal's liability and client's exclusive remedy for any claim arising, whether based in contract or tort, shall be limited to the amount paid by client for analyses. All claims, including those for negligence and any other cause whatsoever shall be deemed waived unless made in writing and received by Cardinal within thirty (30) days after completion of the applicable service. In no event shall Cardinal be liable for incidental or consequential damages, including, without limitation, business interruptions, loss of use, or loss of profits incurred by client, its subsidiaries, affiliates or successors arising out of or related to the performance of services hereunder by Cardinal, regardless of whether such claim is based upon any of the above-stated reasons or otherwise. Results relate only to the samples identified above. This report shall not be reproduced except in full with written approval of Cardinal Laboratories.



101 East Marland, Hobbs, NM 88240

(876) 393-2328 Fax (876) 393-2476

Page ____ of ____

Terms and Conditions: Arrears will be charged on all accounts more than 30 days past due at the rate of 24% per annum from the original date of invoice, and all costs of collection, including attorney's fees.

Relinquished By: <u>[Signature]</u> Date: <u>June 9</u> Received By: <u>[Signature]</u> Time: <u>1600</u>		Phone Result: <u>D</u> No <u>No</u> Add'l Phone #: <u> </u> Fax Result: <u>C</u> No <u>No</u> Add'l Fax #: <u> </u> REMARKS: <u> </u>	
Delivered By: (Circle One) Sampler - UPS - Bus - Other: <u> </u>		Temp: <u>60°C</u> Sample Condition: Cool Intact <input checked="" type="checkbox"/> Yes <input type="checkbox"/> No Checked By: <u>[Signature]</u>	

† Cardinal cannot accept verbal changes. Please fax written changes to 876-381-2476.

#26



PHONE (575) 393-2326 • 101 E. MARLAND • HOBBS, NM 88240

**ANALYTICAL RESULTS FOR
HUNGRY HORSE ENVIRONMENTAL SERVICES
ATTN. VERNON K. BLACK
P.O. BOX 1058
HOBBS, NM 88241
FAX TO: (575) 391-4585**

Receiving Date: 08/10/09
Reporting Date: 06/11/09
Project Owner: FOREST OIL CORP.
Project Name: FOC STATE B NO. 12
Project Location: EDDY COUNTY, NM

Analysis Date: 08/11/09
Sampling Date: 06/10/09
Sample Type: SOIL
Sample Condition: INTACT @ 20°C
Sample Received By: ML
Analyzed By: HM

METHOD: Standard Methods	4500-CIB
--------------------------	----------

Note: Analysis performed on a 1:4 w/v aqueous extract.

Chad Kane
Chemist

06/11/09
Date

H17604 HHE

PLEASE NOTE. Liability and Damages. Cardinal's liability and client's exclusive remedy for any claim arising, whether based in contract or tort, shall be limited to the amount paid by client for analyses. All claims, including those for negligence and any other cause whatsoever shall be deemed waived unless made in writing and received by Cardinal within thirty (30) days after completion of the applicable service. In no event shall Cardinal be liable for incidental or consequential damages, including, without limitation, business interruptions, loss of use, or loss of profits incurred by client, its subsidiaries, affiliates or successors arising out of or related to the performance of services hereunder by Cardinal, regardless of whether such claim is based upon any of the above-stated reasons or otherwise. Results relate only to the samples identified above. This report shall not be reproduced except in full with written approval of Cardinal Laboratories.



(676) 393-2328 Fax (676) 393-2478

[illegible]

Terms and Conditions: Interest will be charged on all accounts more than 30 days past due at the rate of 1 1/2% per annum from the original date of invoice and all costs of collection, including attorney's fees.

Sampler Relinquished: Relinquished By: <u>LABL</u> Delivered By: (Circle One) Sampler - UPS - Bus - Other:	Received By: Date: <u>10 Jun 9</u> Time: <u>1550</u> Temp. <u>20C</u> Sample Condition Cool (int) <input checked="" type="checkbox"/> Yes <input type="checkbox"/> No Hot (int) <input type="checkbox"/> Yes <input checked="" type="checkbox"/> No	Phone Result: <input type="checkbox"/> No Fax Result: <input type="checkbox"/> No REMARKS:	Received By: Date: <u>10 Jun 9</u> Time: <u>1550</u> Temp. <u>20C</u> Sample Condition Cool (int) <input checked="" type="checkbox"/> Yes <input type="checkbox"/> No Hot (int) <input type="checkbox"/> Yes <input checked="" type="checkbox"/> No	Phone Result: <input type="checkbox"/> No Fax Result: <input type="checkbox"/> No REMARKS:
--	---	---	---	---

† Cardinal cannot accept verbal changes. Please fax written changes to 676-393-2476.

* cooling process had begun



PHONE (575) 393-2328 • 101 E. MARLAND • HOBBS, NM 88240

ATTN: VERNON K. BLACK

P.O. BOX 1058
HOBBS, NM 88241

FAX TO: (575) 391-4585

Receiving Date: 06/18/09

Reporting Date: 06/19/09

Project Owner: FOREST OIL

Project Name: FOC STATE B-12

Project Location: EDDY COUNTY, NM

Analysis Date: 06/19/09

Sampling Date: 06/18/09

Sample Type: SOIL

Sample Condition: INTACT @ 24°C

Sample Received By: ML

Analyzed By: HM

[illegible]

METHOD: Standard Methods

4500-CIB

Note: Analysis performed on a 1:4 w:v aqueous extract.

Chad Keene
Chemist

Date _____

H17665 HHE

PLEASE NOTE: Liability and Damages. Cardinal's liability and client's exclusive remedy for any claim arising, whether based in contract or tort, shall be limited to the amount paid by client for analyses. All claims, including those for negligence and any other cause whatsoever shall be deemed waived unless made in writing and received by Cardinal within thirty (30) days after completion of the applicable service. In no event shall Cardinal be liable for incidental or consequential damages, including, without limitation, business interruptions, loss of use, or loss of profits incurred by client, its subsidiaries, affiliates or successors arising out of or related to the performance of services hereunder by Cardinal, regardless of whether such claim is based upon any of the above-stated reasons or otherwise. Results relate only to the samples identified above. This report shall not be reproduced except in full with written approval of Cardinal Laboratories.



CARDINAL LABORATORIES

101 East Marland, Hobbs, NM 88240

(575) 393-2328 Fax (575) 393-2476

Page ____ of ____

Company Name: Hungry Horse Environmental Services Project Manager: Vernon K. Black Address: PO Box 1058 City: Hobbs State: NM Zip: 88241 Phone #: 575-393-3386 Fax #: 575-391-4585 Project #: Project Owner: Forest Oil Project Name: FOC State 6-12 Project Location: Eddy County NM Sampler Name: Vernon K. Black				BILL TO P.O. #: Company: SAME Attn: Address: City: State: Zip: Phone #: Fax #:		ANALYSIS REQUEST															
FOR LAB USE ONLY				MATRIX GROUNDWATER WASTEWATER SOIL OIL SLUDGE OTHER		PRESERV. ACIDBASE ICE / COOL OTHER		SAMPLING DATE TIME		Chlorides											
Lab I.D. HIT665-1		Sample I.D. 18 PGS Confirmation Sample		# CONTAINERS 6		DATE 18 Jun 09		TIME 1930		7											

ALERT NOTE: Liability and Damages: Cardinal's liability and clients' exclusive remedy for any claim arising whether based in contract or tort, shall be limited to the amount paid by the client for the analysis. All claims, including those for negligence and any other claims, shall be deemed waived unless made in writing and received by Cardinal within 30 days after completion of the applicable service. In no event shall Cardinal be liable for incidental or consequential damages, including without limitation, business interruption, loss of use, or loss of profits resulting from the analysis.

Terms and Conditions: Cardinal will be charged on all accounts more than 30 days past due at the rate of 24% per annum from the original date of invoice and all costs of collection, including attorney's fees.

Sampler Relinquished:		Date: 18 Jun 09		Received By:		Phone Request: <input type="checkbox"/>		No: <input type="checkbox"/>		Add'l Phone #:	
Relinquished By:		Date: 18 Jun 09		Received By:		Fax Request: <input type="checkbox"/>		No: <input type="checkbox"/>		Add'l Fax #:	
Delivered By: (Circle One) Sampler - UPS - Bus - Other:		Temp: 24°C		Sample Condition: Cool Intact		CHECKED BY:		REMARKS:			

† Cardinal cannot accept verbal changes. Please fax written changes to 575-393-2476.

Attachment 3

NEW MEXICO ONE CALL
Locate Request Confirmation

Ticket #:2009191726
Work to Begin Date:

05/08/2009

Reason Code:STANDARD LOCATE
Time: 08:00:00 AM

CALLER INFORMATION

SHANON RUSK
HUNGRY HORSE LLC

Excavator Type:CONTRACTOR
Tel.:(575)631-0983

DIG LOCATION

City:RURAL EDDY
Subdivision:
Address : To:
Street : FOC STATE B #12
Nearest Intersecting Street :
Second Intersecting Street :

Additional Dig Information:
DIGGING RESERVE PIT = FROM MALJAMAR W ON US-82
6.8MI T/N ON CR-223 (SWEETGUM RD) T/N 0.8MI T/NE
0.5MI TO LOCATION =
SPOT 300FT RADIUS OF RESERVE PIT

Remarks:

Township: 17S Range: 31E Section 1/4: 16 SE
Type of Work: OIL/GAS-WELL/PIT REMOVAL

The following utility owners have been notified of
your proposed excavation site:
CHEVRON-HOBBS
FRONTIER FIELD SERVICES,LLC
DCP MIDSTREAM - LINUM
PLAINS PIPELINE - HOBBS

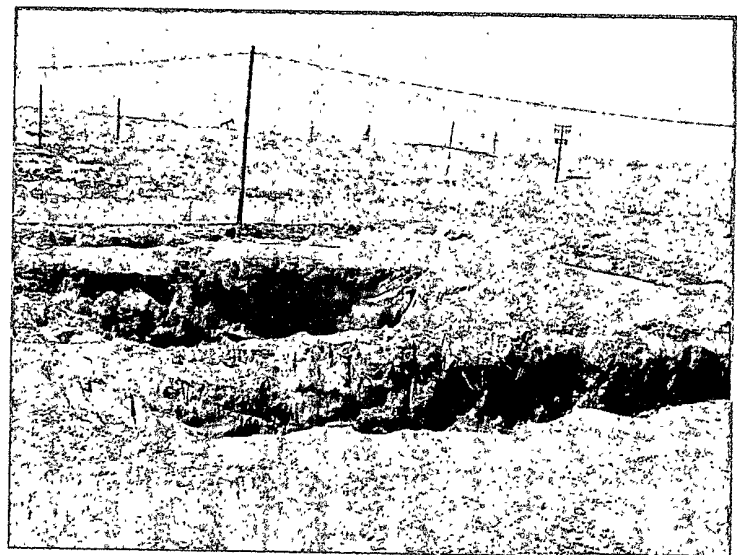
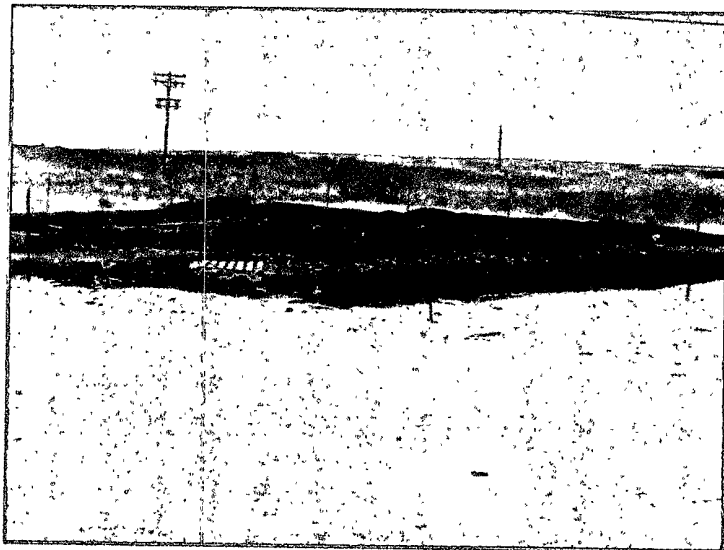
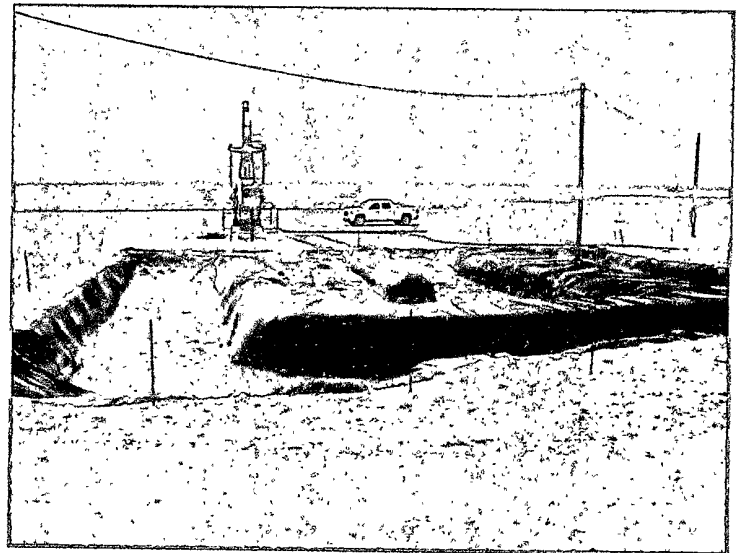
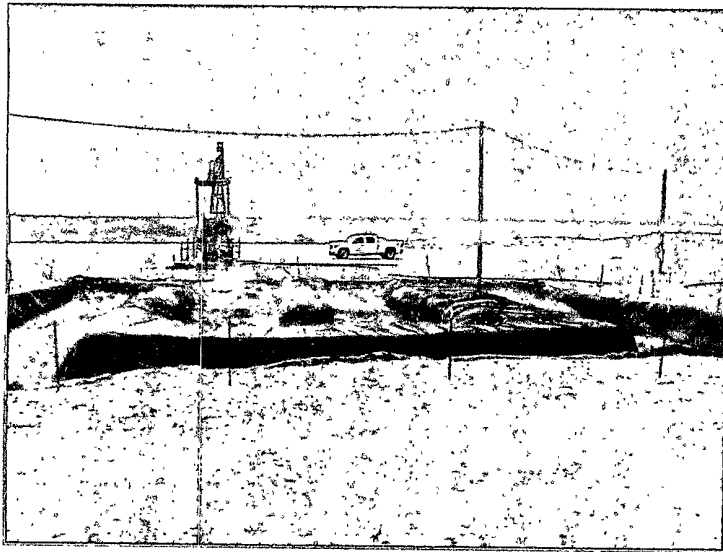
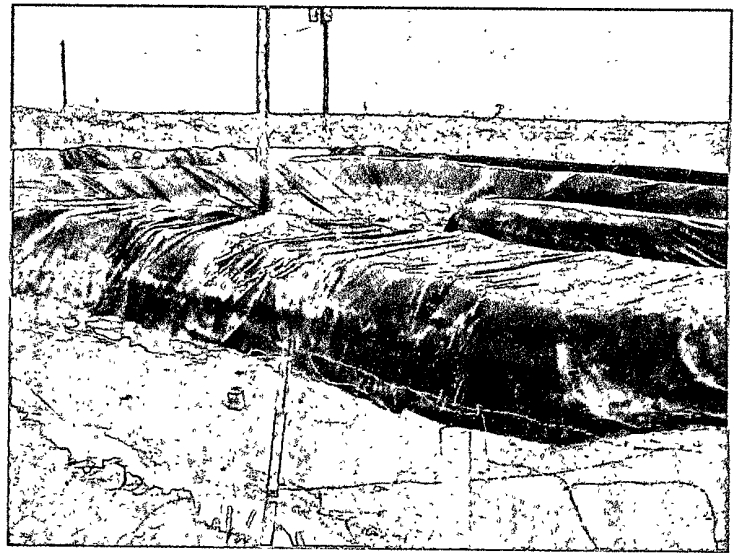
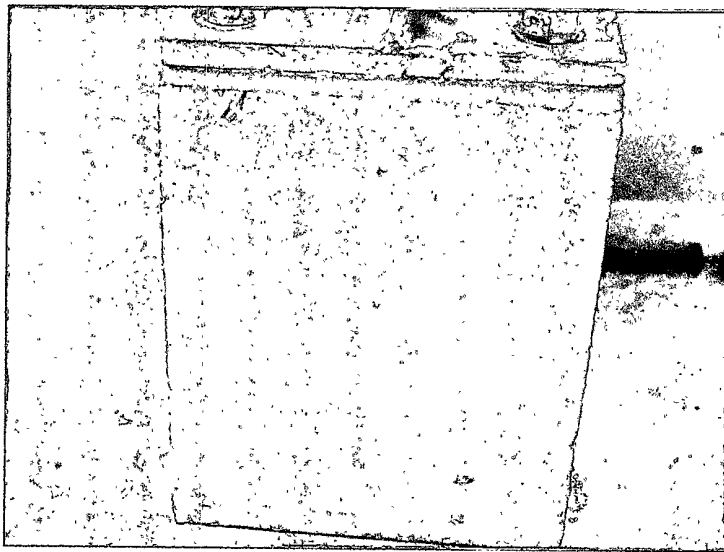
IMPORTANT CONFIRMATION NOTICE

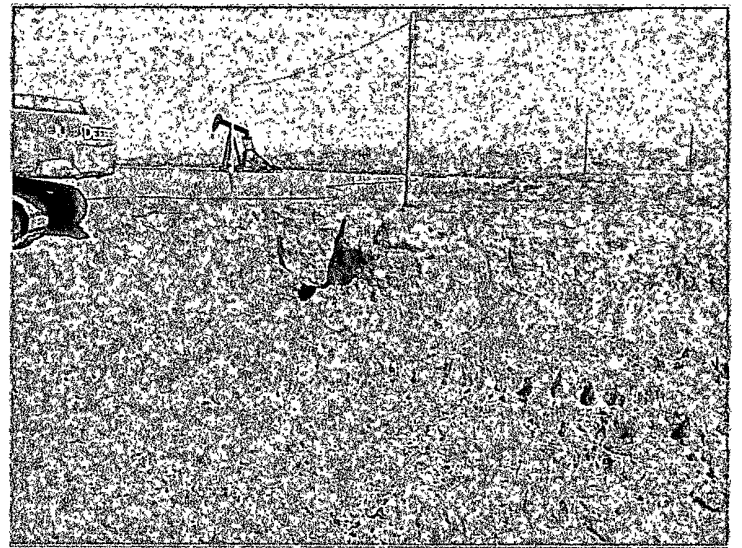
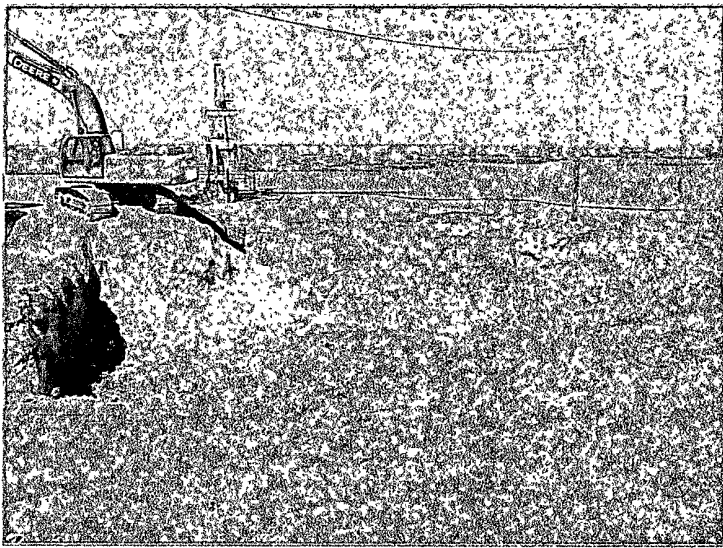
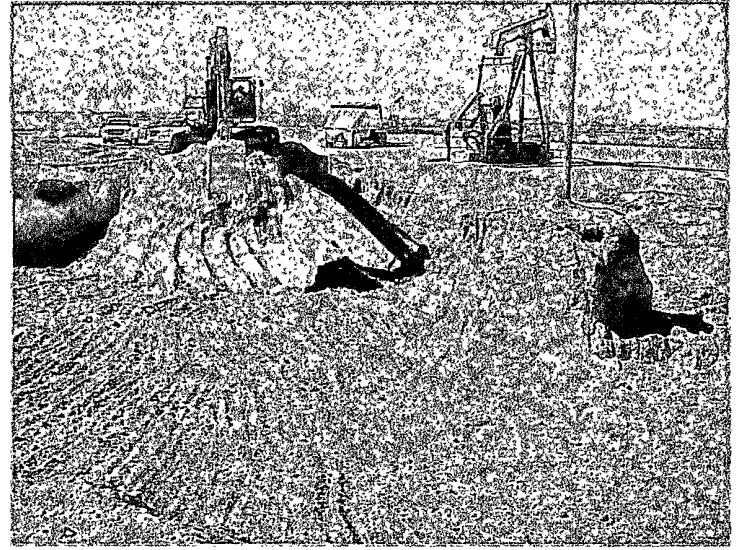
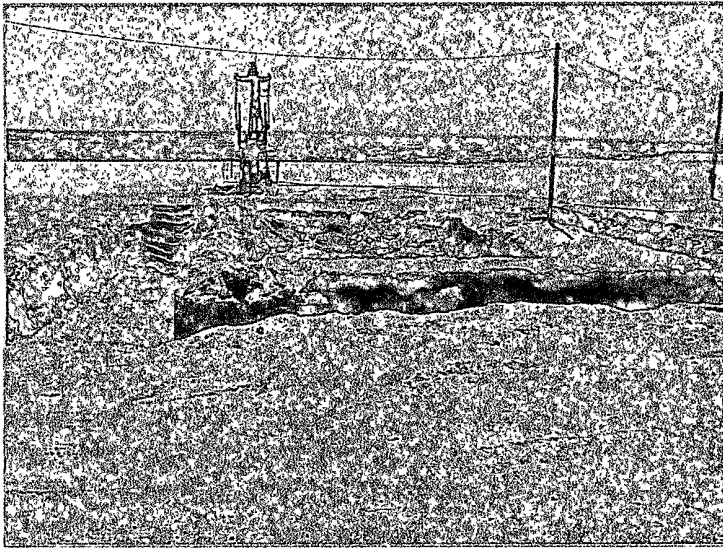
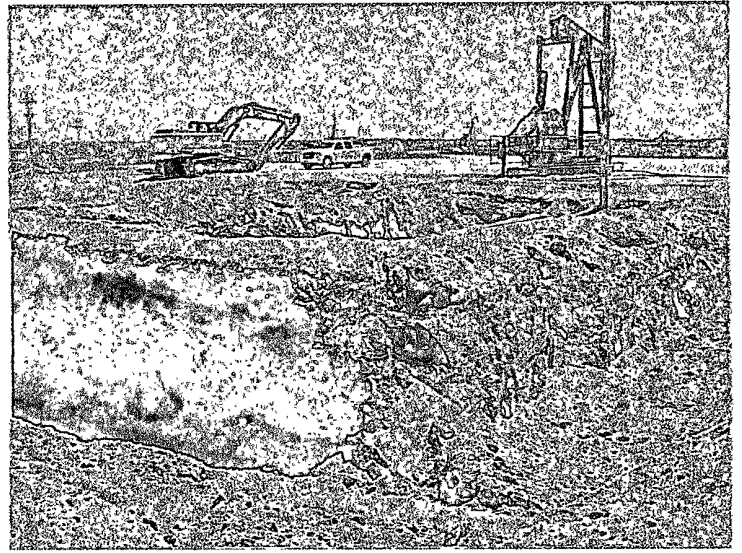
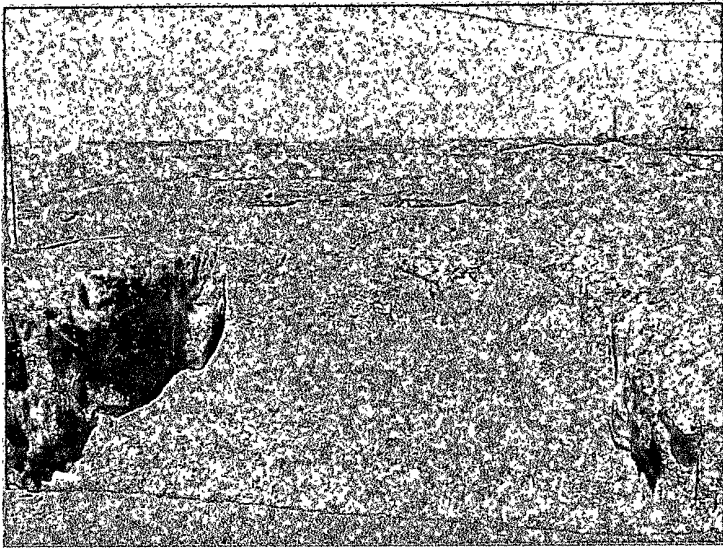
Your fax request has been received and processed. It is your
responsibility to review the information provided on this faxback
confirmation ticket and ensure it has been correctly interpreted from
your request. Notify us immediately of any corrections or errors.
Acceptance of this faxback confirmation ticket means you accept
responsibility for the accuracy of the information contained in the
ticket and you agree to indemnify New Mexico One Call Systems, Inc. of
all liability, claims, fees, or damages, including reasonable attorney
fees arising from or resulting from the use of the information provided
on this confirmation ticket.

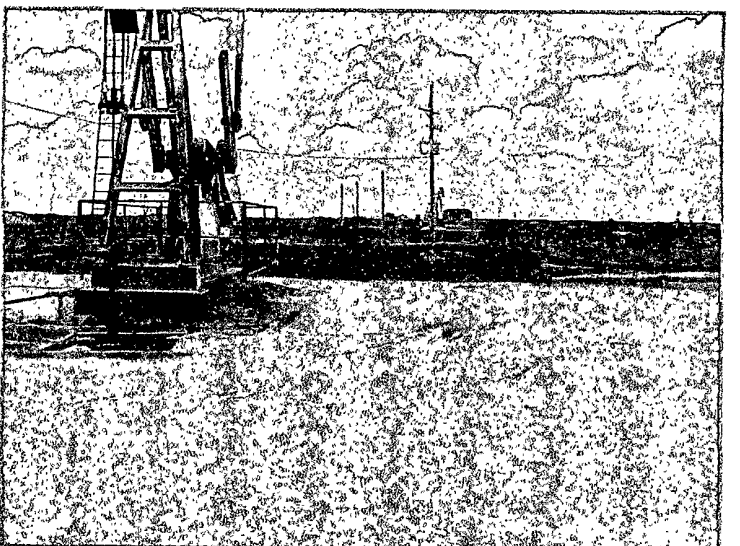
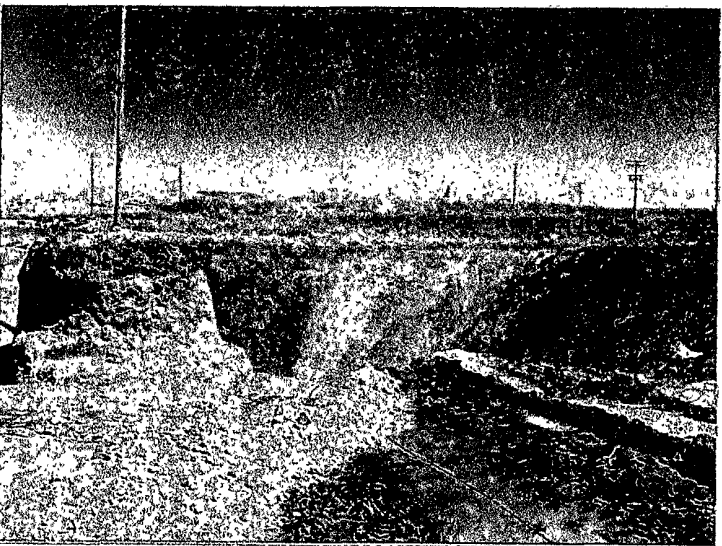
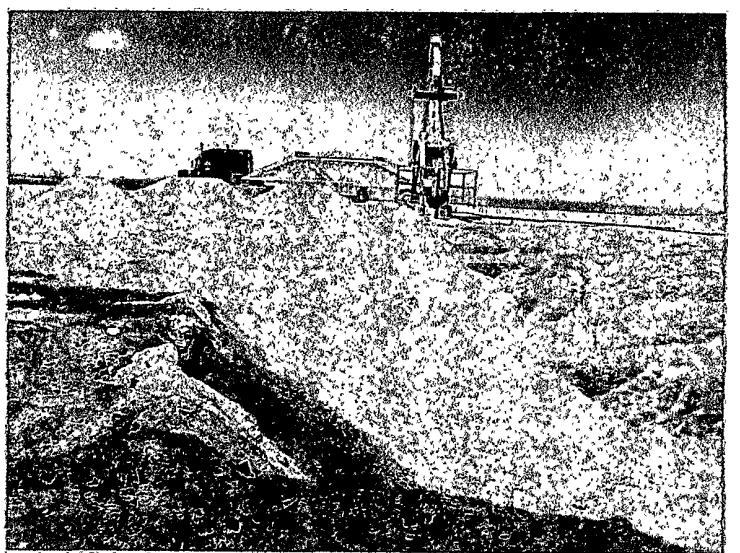
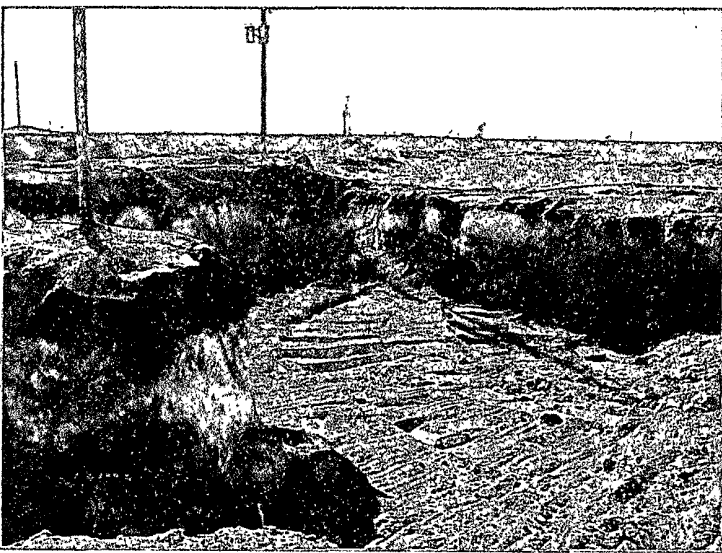
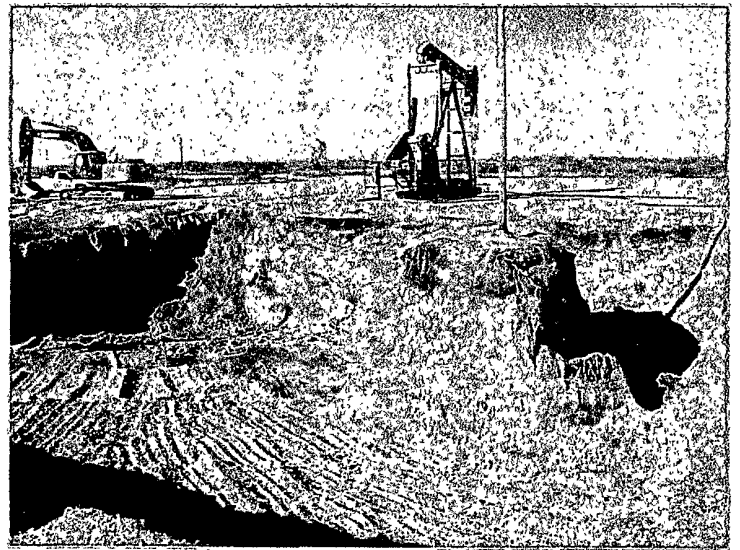
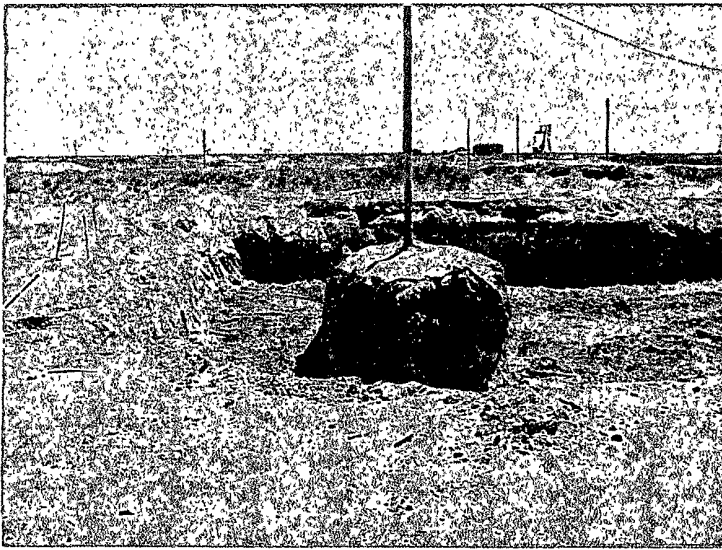
New Mexico Law requires you to wait two working days from the date and

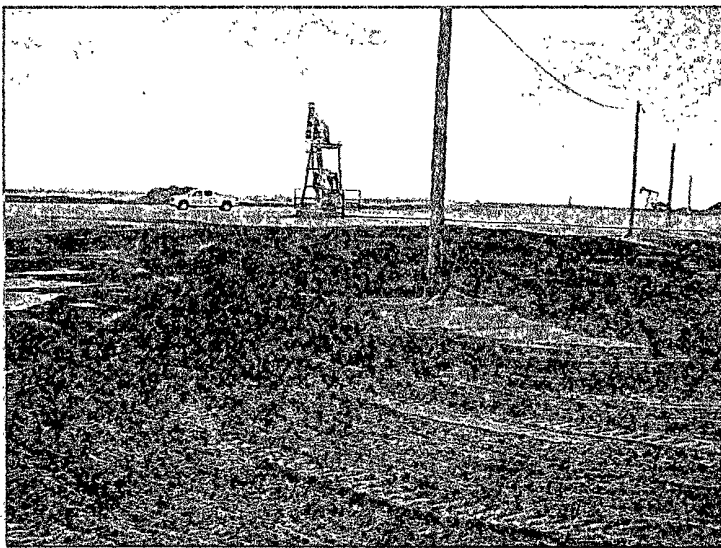
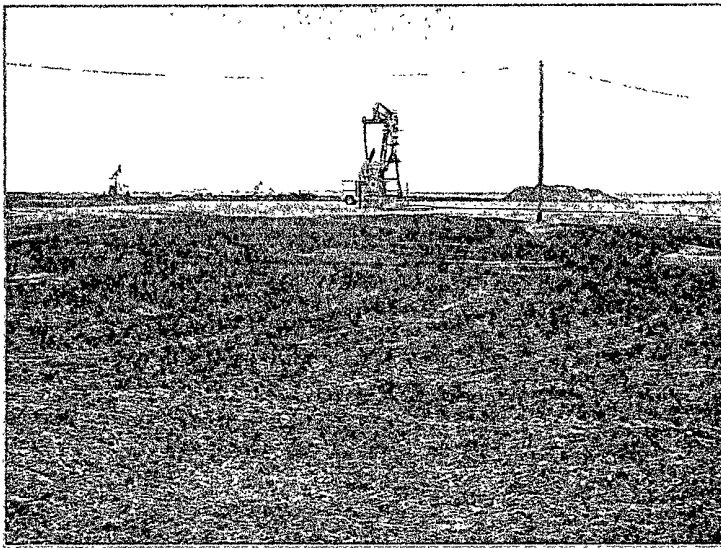


Attachment 4











Attachment 5

HUNGRY HORSE, LLC
ENVIRONMENTAL SERVICES

Dirt Work

On-Site Remediation

Soil Testing

Excavation

19May09

To: Jim Amos, BLM Carlsbad Office
Reference: Pit Closures

Dear Mr. Amos,

Hungry Horse Environmental Services has been retained by Forest Oil Corporation to conduct drilling reserve pit closures at two locations on BLM land. All work over pits will be closed using the waste excavation and removal process. All pit closure work will be done in accordance with 19.15.17.13 NMAC. Each affected area off the existing location will be returned to its natural state. Should you have any questions, please feel free to contact me at any time. The work to be conducted is at the listed well locations. Both locations are in Sec. 16, T17S, R31E of Eddy County, NM.

FOC State B #11 30-015-36255
FOC State B #12 30-015-36256

Thanks for your help,

VK Black 19 May 09

Vernon K. Black, Hungry Horse Environmental Services

Attachment 6

The center of the closed pit is **95' northeast** of the well head, **GPS N32 49.674 W103 51.984**.

Reference the drawing on page #2



Attachment 7

District I
1625 N. French Dr., Hobbs, NM 88240
District II
1301 W. Grand Avenue, Artesia, NM 88210
District III
1000 Rio Brazos Road, Aztec, NM 87410
District IV
1220 S. St. Francis Dr., Santa Fe, NM 87505

State of New Mexico
Energy Minerals and Natural Resources
Department
Oil Conservation Division
1220 South St. Francis Dr.
Santa Fe, NM 87505

REC'D 2/10/09
VIA EMAIL

Form C-144
July 21, 2008

For temporary pits, closed-loop systems, and below-grade tanks, submit to the appropriate NMOCD District Office.
For permanent pits and exceptions submit to the Santa Fe Environmental Bureau office and provide a copy to the appropriate NMOCD District Office.

Pit, Closed-Loop System, Below-Grade Tank, or
Proposed Alternative Method Permit or Closure Plan Application

- Type of action: ☐ Permit of a pit, closed-loop system, below-grade tank, or proposed alternative method
☐ Closure of a pit, closed-loop system, below-grade tank, or proposed alternative method
☐ Modification to an existing permit
☒ Closure plan only submitted for an existing permitted or non-permitted pit, closed-loop system, below-grade tank, or proposed alternative method

Instructions: Please submit one application (Form C-144) per individual pit, closed-loop system, below-grade tank or alternative request

Please be advised that approval of this request does not relieve the operator of liability should operations result in pollution of surface water, ground water or the environment. Nor does approval relieve the operator of its responsibility to comply with any other applicable governmental authority's rules, regulations or ordinances.

1.
Operator: Forest Oil Corporation OGRID #: 8041
Address: 707 17th St., Denver, CO 80202
Facility or well name: FOC State B #12
API Number: 30-015-36256 OCD Permit Number: _____
U/L or Qtr/Qtr P Section 16 Township 17S Range 31E County: Eddy
Center of Proposed Design: Latitude 32°49'39.45" Longitude 103°51'57.78" NAD: ☐ 1927 X1983
Surface Owner: ☐ Federal ☒ State ☐ Private ☐ Tribal Trust or Indian Allotment

2.
☒ Pit: Subsection F or G of 19.15.17.11 NMAC
Temporary: ☒ Drilling ☐ Workover
☐ Permanent ☐ Emergency ☐ Cavitation ☐ P&A
☒ Lined ☐ Unlined Liner type: Thickness 12 mil ☐ LLDPE ☐ HDPE ☐ PVC ☐ Other _____
X String-Reinforced
Liner Seams: ☐ Welded ☐ Factory ☒ Other stitched Volume: 5000 bbl Dimensions: L 95' x W 86' x D 6'

Rule 50 Permitted

3.
☐ Closed-loop System: Subsection H of 19.15.17.11 NMAC
Type of Operation: ☐ P&A ☐ Drilling a new well ☐ Workover or Drilling (Applies to activities which require prior approval of a permit or notice of intent)
☐ Drying Pad ☐ Above Ground Steel Tanks ☐ Haul-off Bins ☐ Other _____
☐ Lined ☐ Unlined Liner type: Thickness _____ mil ☐ LLDPE ☐ HDPE ☐ PVC ☐ Other _____
Liner Seams: ☐ Welded ☐ Factory ☐ Other _____

4.
☐ Below-grade tank: Subsection I of 19.15.17.11 NMAC
Volume: _____ bbl Type of fluid: _____
Tank Construction material: _____
☐ Secondary containment with leak detection ☐ Visible sidewalls, liner, 6-inch lift and automatic overflow shut-off
☐ Visible sidewalls and liner ☐ Visible sidewalls only ☐ Other _____
Liner type: Thickness _____ mil ☐ HDPE ☐ PVC ☐ Other _____



5.
☐ Alternative Method:
Submission of an exception request is required. Exceptions must be submitted to the Santa Fe Environmental Bureau office for consideration of approval.

6.

Fencing: Subsection D of 19.15.17.11 NMAC (*Applies to permanent pits, temporary pits, and below-grade tanks*)

- ☐ Chain link, six feet in height, two strands of barbed wire at top (*Required if located within 1000 feet of a permanent residence, school, hospital, institution or church*)
- ☐ Four foot height, four strands of barbed wire evenly spaced between one and four feet
- ☐ Alternate. Please specify _____

7.

Netting: Subsection E of 19.15.17.11 NMAC (*Applies to permanent pits and permanent open top tanks*)

- ☐ Screen ☐ Netting ☐ Other _____
- ☐ Monthly inspections (If netting or screening is not physically feasible)

8.

Signs: Subsection C of 19.15.17.11 NMAC

- ☐ 12"x 24", 2" lettering, providing Operator's name, site location, and emergency telephone numbers
- ☐ Signed in compliance with 19.15.3.103 NMAC

9.

Administrative Approvals and Exceptions:

Justifications and/or demonstrations of equivalency are required. Please refer to 19.15.17 NMAC for guidance.

Please check a box if one or more of the following is requested, if not leave blank:

- ☐ Administrative approval(s): Requests must be submitted to the appropriate division district or the Santa Fe Environmental Bureau office for consideration of approval.
- ☐ Exception(s): Requests must be submitted to the Santa Fe Environmental Bureau office for consideration of approval.

10.

Siting Criteria (regarding permitting): 19.15.17.10 NMAC

Instructions: The applicant must demonstrate compliance for each siting criteria below in the application. Recommendations of acceptable source material are provided below. Requests regarding changes to certain siting criteria may require administrative approval from the appropriate district office or may be considered an exception which must be submitted to the Santa Fe Environmental Bureau office for consideration of approval. Applicant must attach justification for request. Please refer to 19.15.17.10 NMAC for guidance. Siting criteria does not apply to drying pads or above-grade tanks associated with a closed-loop system.

Ground water is less than 50 feet below the bottom of the temporary pit, permanent pit, or below-grade tank. - NM Office of the State Engineer - iWATERS database search; USGS; Data obtained from nearby wells	<input type="checkbox"/> Yes <input type="checkbox"/> No
Within 300 feet of a continuously flowing watercourse, or 200 feet of any other significant watercourse or lakebed, sinkhole, or playa lake (measured from the ordinary high-water mark). - Topographic map; Visual inspection (certification) of the proposed site	<input type="checkbox"/> Yes <input type="checkbox"/> No
Within 300 feet from a permanent residence, school, hospital, institution, or church in existence at the time of initial application. (Applies to temporary, emergency, or cavitation pits and below-grade tanks) - Visual inspection (certification) of the proposed site; Aerial photo; Satellite image	<input type="checkbox"/> Yes <input type="checkbox"/> No <input type="checkbox"/> NA
Within 1000 feet from a permanent residence, school, hospital, institution, or church in existence at the time of initial application. (Applies to permanent pits) - Visual inspection (certification) of the proposed site; Aerial photo; Satellite image	<input type="checkbox"/> Yes <input type="checkbox"/> No <input type="checkbox"/> NA
Within 500 horizontal feet of a private, domestic fresh water well or spring that less than five households use for domestic or stock watering purposes, or within 1000 horizontal feet of any other fresh water well or spring, in existence at the time of initial application. - NM Office of the State Engineer - iWATERS database search; Visual inspection (certification) of the proposed site	<input type="checkbox"/> Yes <input type="checkbox"/> No
Within incorporated municipal boundaries or within a defined municipal fresh water well field covered under a municipal ordinance adopted pursuant to NMSA 1978, Section 3-27-3, as amended. - Written confirmation or verification from the municipality; Written approval obtained from the municipality	<input type="checkbox"/> Yes <input type="checkbox"/> No
Within 500 feet of a wetland. - US Fish and Wildlife Wetland Identification map; Topographic map; Visual inspection (certification) of the proposed site	<input type="checkbox"/> Yes <input type="checkbox"/> No
Within the area overlying a subsurface mine. - Written confirmation or verification or map from the NM EMNRD-Mining and Mineral Division	<input type="checkbox"/> Yes <input type="checkbox"/> No
Within an unstable area. - Engineering measures incorporated into the design; NM Bureau of Geology & Mineral Resources; USGS; NM Geological Society; Topographic map	<input type="checkbox"/> Yes <input type="checkbox"/> No
Within a 100-year floodplain. - FEMA map	<input type="checkbox"/> Yes <input type="checkbox"/> No

11.

Temporary Pits, Emergency Pits, and Below-grade Tanks Permit Application Attachment Checklist: Subsection B of 19.15.17.9 NMAC*Instructions: Each of the following items must be attached to the application. Please indicate, by a check mark in the box, that the documents are attached.*

- ☐ Hydrogeologic Report (Below-grade Tanks) - based upon the requirements of Paragraph (4) of Subsection B of 19.15.17.9 NMAC
- ☐ Hydrogeologic Data (Temporary and Emergency Pits) - based upon the requirements of Paragraph (2) of Subsection B of 19.15.17.9 NMAC
- ☐ Siting Criteria Compliance Demonstrations - based upon the appropriate requirements of 19.15.17.10 NMAC
- ☐ Design Plan - based upon the appropriate requirements of 19.15.17.11 NMAC
- ☐ Operating and Maintenance Plan - based upon the appropriate requirements of 19.15.17.12 NMAC
- ☐ Closure Plan (Please complete Boxes 14 through 18, if applicable) - based upon the appropriate requirements of Subsection C of 19.15.17.9 NMAC and 19.15.17.13 NMAC
- ☐ Previously Approved Design (attach copy of design) API Number: _____ or Permit Number: _____

12.

Closed-loop Systems Permit Application Attachment Checklist: Subsection B of 19.15.17.9 NMAC*Instructions: Each of the following items must be attached to the application. Please indicate, by a check mark in the box, that the documents are attached.*

- ☐ Geologic and Hydrogeologic Data (only for on-site closure) - based upon the requirements of Paragraph (3) of Subsection B of 19.15.17.9
- ☐ Siting Criteria Compliance Demonstrations (only for on-site closure) - based upon the appropriate requirements of 19.15.17.10 NMAC
- ☐ Design Plan - based upon the appropriate requirements of 19.15.17.11 NMAC
- ☐ Operating and Maintenance Plan - based upon the appropriate requirements of 19.15.17.12 NMAC
- ☐ Closure Plan (Please complete Boxes 14 through 18, if applicable) - based upon the appropriate requirements of Subsection C of 19.15.17.9 NMAC and 19.15.17.13 NMAC
- ☐ Previously Approved Design (attach copy of design) API Number: _____
- ☐ Previously Approved Operating and Maintenance Plan API Number: _____ (Applies only to closed-loop system that use above ground steel tanks or haul-off bins and propose to implement waste removal for closure)

13.

Permanent Pits Permit Application Checklist: Subsection B of 19.15.17.9 NMAC*Instructions: Each of the following items must be attached to the application. Please indicate, by a check mark in the box, that the documents are attached.*

- ☐ Hydrogeologic Report - based upon the requirements of Paragraph (1) of Subsection B of 19.15.17.9 NMAC
- ☐ Siting Criteria Compliance Demonstrations - based upon the appropriate requirements of 19.15.17.10 NMAC
- ☐ Climatological Factors Assessment
- ☐ Certified Engineering Design Plans - based upon the appropriate requirements of 19.15.17.11 NMAC
- ☐ Dike Protection and Structural Integrity Design - based upon the appropriate requirements of 19.15.17.11 NMAC
- ☐ Leak Detection Design - based upon the appropriate requirements of 19.15.17.11 NMAC
- ☐ Liner Specifications and Compatibility Assessment - based upon the appropriate requirements of 19.15.17.11 NMAC
- ☐ Quality Control/Quality Assurance Construction and Installation Plan
- ☐ Operating and Maintenance Plan - based upon the appropriate requirements of 19.15.17.12 NMAC
- ☐ Freeboard and Overtopping Prevention Plan - based upon the appropriate requirements of 19.15.17.11 NMAC
- ☐ Nuisance or Hazardous Odors, including H₂S, Prevention Plan
- ☐ Emergency Response Plan
- ☐ Oil Field Waste Stream Characterization
- ☐ Monitoring and Inspection Plan
- ☐ Erosion Control Plan
- ☐ Closure Plan - based upon the appropriate requirements of Subsection C of 19.15.17.9 NMAC and 19.15.17.13 NMAC

14.

Proposed Closure: 19.15.17.13 NMAC*Instructions: Please complete the applicable boxes, Boxes 14 through 18, in regards to the proposed closure plan.*

- Type: ☒ Drilling ☐ Workover ☐ Emergency ☐ Cavitation ☐ P&A ☐ Permanent Pit ☐ Below-grade Tank ☐ Closed-loop System
- ☐ Alternative
- Proposed Closure Method: ☒ Waste Excavation and Removal
- ☐ Waste Removal (Closed-loop systems only)
- ☐ On-site Closure Method (Only for temporary pits and closed-loop systems)
- ☐ In-place Burial ☐ On-site Trench Burial
- ☐ Alternative Closure Method (Exceptions must be submitted to the Santa Fe Environmental Bureau for consideration)

15.

Waste Excavation and Removal Closure Plan Checklist: (19.15.17.13 NMAC) *Instructions: Each of the following items must be attached to the closure plan. Please indicate, by a check mark in the box, that the documents are attached.*

- ☒ X Protocols and Procedures - based upon the appropriate requirements of 19.15.17.13 NMAC
- ☒ X Confirmation Sampling Plan (if applicable) - based upon the appropriate requirements of Subsection F of 19.15.17.13 NMAC
- ☒ X Disposal Facility Name and Permit Number (for liquids, drilling fluids and drill cuttings)
- ☒ X Soil Backfill and Cover Design Specifications - based upon the appropriate requirements of Subsection H of 19.15.17.13 NMAC
- ☒ X Re-vegetation Plan - based upon the appropriate requirements of Subsection I of 19.15.17.13 NMAC
- ☒ X Site Reclamation Plan - based upon the appropriate requirements of Subsection G of 19.15.17.13 NMAC

16.

Waste Removal Closure For Closed-loop Systems That Utilize Above Ground Steel Tanks or Haul-off Bins Only: (19.15.17.13.D NMAC)*Instructions: Please indentify the facility or facilities for the disposal of liquids, drilling fluids and drill cuttings. Use attachment if more than two facilities are required.*

Disposal Facility Name: _____

Disposal Facility Permit Number: _____

Disposal Facility Name: _____

Disposal Facility Permit Number: _____

Will any of the proposed closed-loop system operations and associated activities occur on or in areas that *will not* be used for future service and operations?☐ Yes (If yes, please provide the information below) ☐ No*Required for impacted areas which will not be used for future service and operations:*☐ Soil Backfill and Cover Design Specifications - based upon the appropriate requirements of Subsection H of 19.15.17.13 NMAC☐ Re-vegetation Plan - based upon the appropriate requirements of Subsection I of 19.15.17.13 NMAC☐ Site Reclamation Plan - based upon the appropriate requirements of Subsection G of 19.15.17.13 NMAC

17.

Siting Criteria (regarding on-site closure methods only): 19.15.17.10 NMAC*Instructions: Each siting criteria requires a demonstration of compliance in the closure plan. Recommendations of acceptable source material are provided below. Requests regarding changes to certain siting criteria may require administrative approval from the appropriate district office or may be considered an exception which must be submitted to the Santa Fe Environmental Bureau office for consideration of approval. Justifications and/or demonstrations of equivalency are required. Please refer to 19.15.17.10 NMAC for guidance.*

Ground water is less than 50 feet below the bottom of the buried waste.

- NM Office of the State Engineer - iWATERS database search; USGS; Data obtained from nearby wells

☐ Yes ☐ No☐ NA

Ground water is between 50 and 100 feet below the bottom of the buried waste

- NM Office of the State Engineer - iWATERS database search; USGS; Data obtained from nearby wells

☐ Yes ☐ No☐ NA

Ground water is more than 100 feet below the bottom of the buried waste.

- NM Office of the State Engineer - iWATERS database search; USGS; Data obtained from nearby wells

☐ Yes ☐ No☐ NA

Within 300 feet of a continuously flowing watercourse, or 200 feet of any other significant watercourse or lakebed, sinkhole, or playa lake (measured from the ordinary high-water mark).

- Topographic map; Visual inspection (certification) of the proposed site

☐ Yes ☐ No

Within 300 feet from a permanent residence, school, hospital, institution, or church in existence at the time of initial application.

- Visual inspection (certification) of the proposed site; Aerial photo; Satellite image

☐ Yes ☐ No

Within 500 horizontal feet of a private, domestic fresh water well or spring that less than five households use for domestic or stock watering purposes, or within 1000 horizontal feet of any other fresh water well or spring, in existence at the time of initial application.

- NM Office of the State Engineer - iWATERS database; Visual inspection (certification) of the proposed site

☐ Yes ☐ No

Within incorporated municipal boundaries or within a defined municipal fresh water well field covered under a municipal ordinance adopted pursuant to NMSA 1978, Section 3-27-3, as amended.

- Written confirmation or verification from the municipality; Written approval obtained from the municipality

☐ Yes ☐ No

Within 500 feet of a wetland.

- US Fish and Wildlife Wetland Identification map; Topographic map; Visual inspection (certification) of the proposed site

☐ Yes ☐ No

Within the area overlying a subsurface mine.

- Written confirmation or verification or map from the NM EMNRD-Mining and Mineral Division

☐ Yes ☐ No

Within an unstable area.

- Engineering measures incorporated into the design; NM Bureau of Geology & Mineral Resources; USGS; NM Geological Society; Topographic map

☐ Yes ☐ No

Within a 100-year floodplain.

- FEMA map

☐ Yes ☐ No

18.

On-Site Closure Plan Checklist: (19.15.17.13 NMAC) Instructions: Each of the following items must be attached to the closure plan. Please indicate, by a check mark in the box, that the documents are attached.☐ Siting Criteria Compliance Demonstrations - based upon the appropriate requirements of 19.15.17.10 NMAC☐ Proof of Surface Owner Notice - based upon the appropriate requirements of Subsection F of 19.15.17.13 NMAC☐ Construction/Design Plan of Burial Trench (if applicable) based upon the appropriate requirements of 19.15.17.11 NMAC☐ Construction/Design Plan of Temporary Pit (for in-place burial of a drying pad) - based upon the appropriate requirements of 19.15.17.11 NMAC☐ Protocols and Procedures - based upon the appropriate requirements of 19.15.17.13 NMAC☐ Confirmation Sampling Plan (if applicable) - based upon the appropriate requirements of Subsection F of 19.15.17.13 NMAC☐ Waste Material Sampling Plan - based upon the appropriate requirements of Subsection F of 19.15.17.13 NMAC☐ Disposal Facility Name and Permit Number (for liquids, drilling fluids and drill cuttings or in case on-site closure standards cannot be achieved)☐ Soil Cover Design - based upon the appropriate requirements of Subsection H of 19.15.17.13 NMAC☐ Re-vegetation Plan - based upon the appropriate requirements of Subsection I of 19.15.17.13 NMAC☐ Site Reclamation Plan - based upon the appropriate requirements of Subsection G of 19.15.17.13 NMAC

19. **Operator Application Certification:**

I hereby certify that the information submitted with this application is true, accurate and complete to the best of my knowledge and belief.

Name (Print): Cindy Bush Title: Sr. Regulatory Tech.

Signature: Cindy Bush Date: _____

e-mail address: cabush@forestoil.com Telephone: 303-812-1554

20. **OCD Approval:** ☐ Permit Application (including closure plan) ☒ Closure Plan (only) ☒ OCD Conditions (see attachment)

OCD Representative Signature: Mike Benavise Signed By: _____ Approval Date: FEB 12 2009

Title: _____ OCD Permit Number: _____

21. **Closure Report (required within 60 days of closure completion):** Subsection K of 19.15.17.13 NMAC

Instructions: Operators are required to obtain an approved closure plan prior to implementing any closure activities and submitting the closure report. The closure report is required to be submitted to the division within 60 days of the completion of the closure activities. Please do not complete this section of the form until an approved closure plan has been obtained and the closure activities have been completed.

☐ Closure Completion Date: _____

22. **Closure Method:**

☐ Waste Excavation and Removal ☐ On-Site Closure Method ☐ Alternative Closure Method ☐ Waste Removal (Closed-loop systems only)
☐ If different from approved plan, please explain.

23. **Closure Report Regarding Waste Removal Closure For Closed-loop Systems That Utilize Above Ground Steel Tanks or Haul-off Bins Only:**

Instructions: Please identify the facility or facilities for where the liquids, drilling fluids and drill cuttings were disposed. Use attachment if more than two facilities were utilized.

Disposal Facility Name: _____ Disposal Facility Permit Number: _____

Disposal Facility Name: _____ Disposal Facility Permit Number: _____

Were the closed-loop system operations and associated activities performed on or in areas that *will not* be used for future service and operations?

☐ Yes (If yes, please demonstrate compliance to the items below) ☐ No

Required for impacted areas which will not be used for future service and operations:

- ☐ Site Reclamation (Photo Documentation)
☐ Soil Backfilling and Cover Installation
☐ Re-vegetation Application Rates and Seeding Technique

24. **Closure Report Attachment Checklist:** *Instructions: Each of the following items must be attached to the closure report. Please indicate, by a check mark in the box, that the documents are attached.*

- ☐ Proof of Closure Notice (surface owner and division)
☐ Proof of Deed Notice (required for on-site closure)
☐ Plot Plan (for on-site closures and temporary pits)
☐ Confirmation Sampling Analytical Results (if applicable)
☐ Waste Material Sampling Analytical Results (required for on-site closure)
☐ Disposal Facility Name and Permit Number
☐ Soil Backfilling and Cover Installation
☐ Re-vegetation Application Rates and Seeding Technique
☐ Site Reclamation (Photo Documentation)

On-site Closure Location: Latitude _____ Longitude _____ NAD: ☐ 1927 ☐ 1983

25. **Operator Closure Certification:**

I hereby certify that the information and attachments submitted with this closure report is true, accurate and complete to the best of my knowledge and belief. I also certify that the closure complies with all applicable closure requirements and conditions specified in the approved closure plan.

Name (Print): _____ Title: _____

Signature: _____ Date: _____

e-mail address: _____ Telephone: _____

New Mexico Energy, Minerals and Natural Resources Department

Bill Richardson
Governor

Joanna Prukop
Cabinet Secretary
Reese Fullerton
Deputy Cabinet Secretary

Mark Fesmire
Division Director
Oil Conservation Division



Conditions of approval for closure of a drilling pit

Notify OCD District 2 office 48 hours prior to commencement of closure activities.

Notify OCD District 2 office 48 hours prior to obtaining samples where analyses of samples obtained are to be submitted to OCD.

⊕ Sampling requirements are listed in 19.15.17.13 [NMAC] (Pit Rule)

Final closure report is to be submitted to OCD not later than 60 days after completion of closure.

⊕ Note: An EPA Method 418.1 must be run in addition to the EPA Method 8015M

Oil Conservation Division

1301 West Grand • Artesia, New Mexico 88210

Phone (575) 748-1283 • Fax (575) 748-9720 • www.emnrd.state.nm.us/OCD



Protocols and Procedure

All pit material and liners will be excavated and transported to Lea Land Inc.

Confirmation Sampling Plan

After excavation a five point composite will be collected from the bottom of the excavation and grab samples will be retrieved from any area that is wet, discolored or showing other evidence of a release.

(N)

The samples will be transported under Chain of Custody to a third party laboratory and analyzed for BTEX (EPA Method 8021B), GRO & GRO (EPA Method 8015M), Chlorides (EPA Method 300.0)

SEE CONDITIONS OF APPROVAL

If the sampling program demonstrates that a release has not occurred or that any release does not exceed the concentrations specified in Subparagraph (b) of Paragraph (1) of Subsection B of 19.15.17.13 NMAC, then excavation will be backfilled

If the sampling program demonstrates a release it will be reported to the NMOCD on a C-141.

Disposal Facility Name and Permit Number

The excavated materials will be disposed of at Lea Land Inc. Permit # WM-1-035

Soil Backfill and Cover Design Specifications

The excavation will be backfilled with compacted, non-waste containing, earthen material; covered and contoured with topsoil consistent with the background thickness of topsoil or one foot of suitable material, whichever is greater.

Re-vegetation Plan

The area will be reseeded when the weather conditions are favorable for the establishment of vegetation.

Site Reclamation Plan

The location will be restored to its original condition prior to oil and gas operations. It will be re-contoured in order to blend with the surrounding topography.

Attachment 8