

District I,
1625 N. French Dr., Hobbs, NM 88240
District II
1301 W. Grand Avenue, Artesia, NM 88210
District III
1000 Rio Brazos Road, Aztec, NM 87410
District IV
1220 S. St. Francis Dr., Santa Fe, NM 87505

State of New Mexico
Energy Minerals and Natural Resources

Form C-101
June 16, 2008

Oil Conservation Division
1220 South St. Francis Dr.
Santa Fe, NM 87505

RECEIVED

Submit to appropriate District Office

DEC - 8 2009

☐ AMENDED REPORT

APPLICATION FOR PERMIT TO DRILL, RE-ENTER, DEEPEN, PLUG BACK, OR ADD A ZONE

¹ Operator Name and Address Yates Petroleum Corporation 105 South Fourth Street Artesia, NM 88210		² OGRID Number 025575
³ Property Code 12091	⁵ Property Name Carl TP Com	⁴ API Number 30-015-20128
⁹ Proposed Pool 1 Foster Ranch; Morrow		⁶ Well No. 2
¹⁰ Proposed Pool 2		

⁷ Surface Location

UL or lot no	Section	Township	Range	Lot Idn	Feet from the	North/South line	Feet from the	East/West line	County
K	22	20S	24E		1650	South	2220	West	Eddy

⁸ Proposed Bottom Hole Location If Different From Surface

UL or lot no.	Section	Township	Range	Lot Idn	Feet from the	North/South line	Feet from the	East/West line	County

Additional Well Information

¹¹ Work Type Code A	¹² Well Type Code G	¹³ Cable/Rotary N/A	¹⁴ Lease Type Code P	¹⁵ Ground Level Elevation 3695'GR
¹⁶ Multiple N	¹⁷ Proposed Depth N/A	¹⁸ Formation Barnett	¹⁹ Contractor N/A	²⁰ Spud Date ASAP

²¹ Proposed Casing and Cement Program

Hole Size	Casing Size	Casing weight/foot	Setting Depth	Sacks of Cement	Estimated TOC
REFER TO ORIGINAL COMPLETION					

²² Describe the proposed program. If this application is to DEEPEN or PLUG BACK, give the data on the present productive zone and proposed new productive zone. Describe the blowout prevention program, if any. Use additional sheets if necessary.

Yates Petroleum Corporation plans to recomplete this well as follows: MIRU WSU. Install BOP and other safety equipment as needed. TOH with rods and tubing. TIH with tubing to recover the RBP at 7648'. Reset an RBP at 7700' and cap with 5 sx sand. Set a cement retainer at +/-7500'. Mix and pump 150 sx Thixotropic Class "H" cement with additives. Tail in with 100 sx Class "H" neat cement with additives. Displace with 26 bbls and sting out of the retainer, if the well is on a vacuum, pump the job at 1-2 BPM while holding 500 psi on the annulus. Reverse clean and pull 30 stand. WOC 24 hrs. Attempt to sting back into the retainer. If we can sting back into the retainer, attempt to establish an injection rate. If we are unable to pump into the formation POOH and prep to drill out the retainer. If we can pump into the formation, consult with the office for a squeeze procedure and slurries, re-squeeze if necessary. Reverse unit to drill out the retainer and clean out to RBP. Pressure test the casing to 1000 psi and re-squeeze if necessary. Circulate the hole clean. TIH to recover the RBP at 7700'. TIH with bit and scraper to the Float collar at 9251'. Perforate Morrow 9010'-9014' (25), 9034'-9038' (25) and 9056'-9062' (37). Stimulate as needed. NOTE: Morrow C-102 was submitted and scanned on 12/14/89.

²³ I hereby certify that the information given above is true and complete to the best of my knowledge and belief.

Signature:

Tina Huerta

Printed name: Tina Huerta

Title: Regulatory Compliance Supervisor

E-mail Address: tina@yatespetroleum.com

Date December 7, 2009

Phone: 575-748-4168

OIL CONSERVATION DIVISION

Approved by:

Agui R

Title:

Geologist

Approval Date:

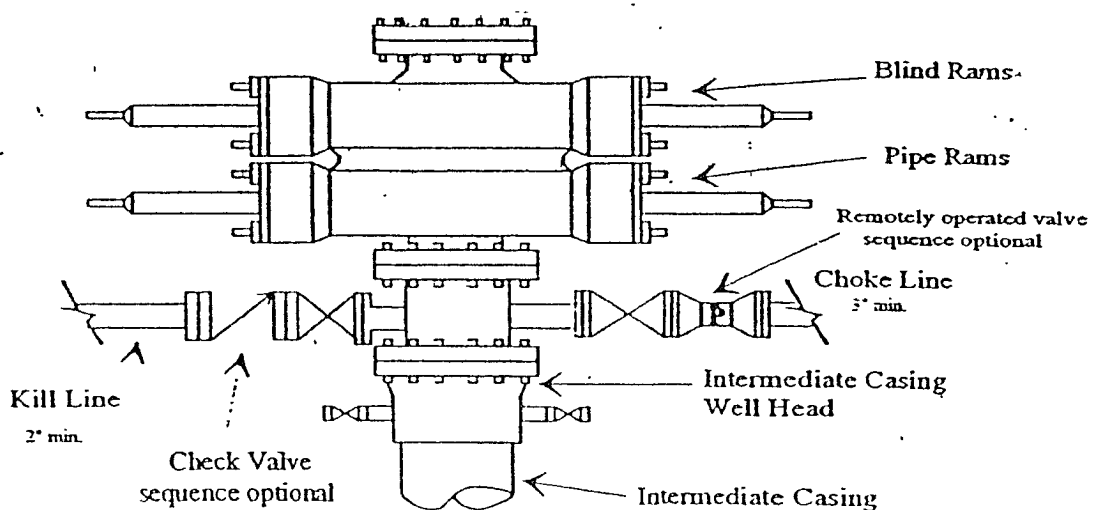
12/14/09

Expiration Date:

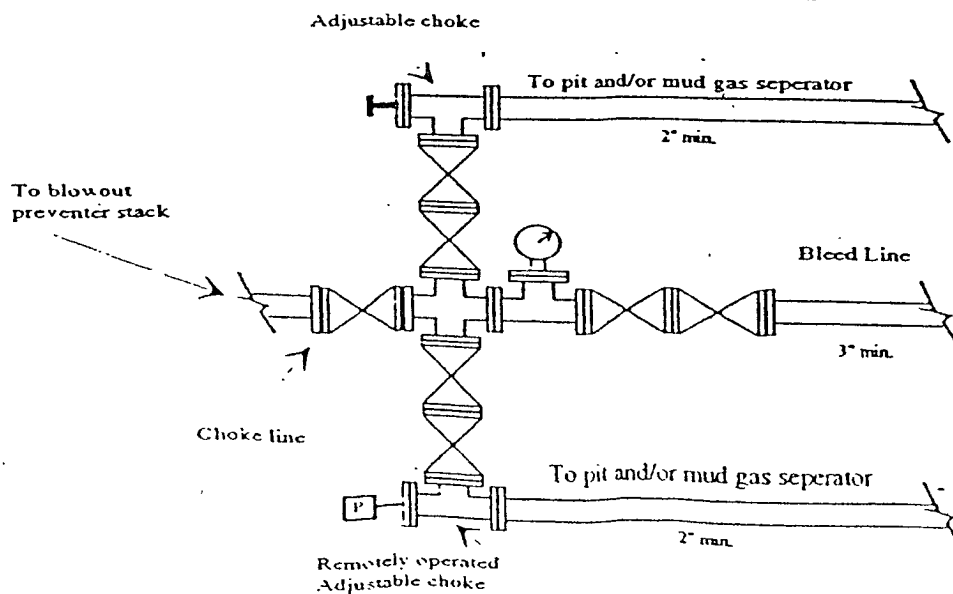
Conditions of Approval Attached ☐

Yates Petroleum Corporation

Typical 3,000 psi Pressure System Schematic



Typical 3,000 psi choke manifold assembly with at least these minimum features



WELL NAME: Carl TP Com #2 FIELD: Dagger Draw

LOCATION: 1,650' FSL & 2,220' FWL of Section 22-20S-24E Eddy Co., NM

GL: 3,695' ZERO: KB:

SPUD DATE: 2/17/90 COMPLETION DATE: 5/11/90

COMMENTS: API No.: 30-015-20128

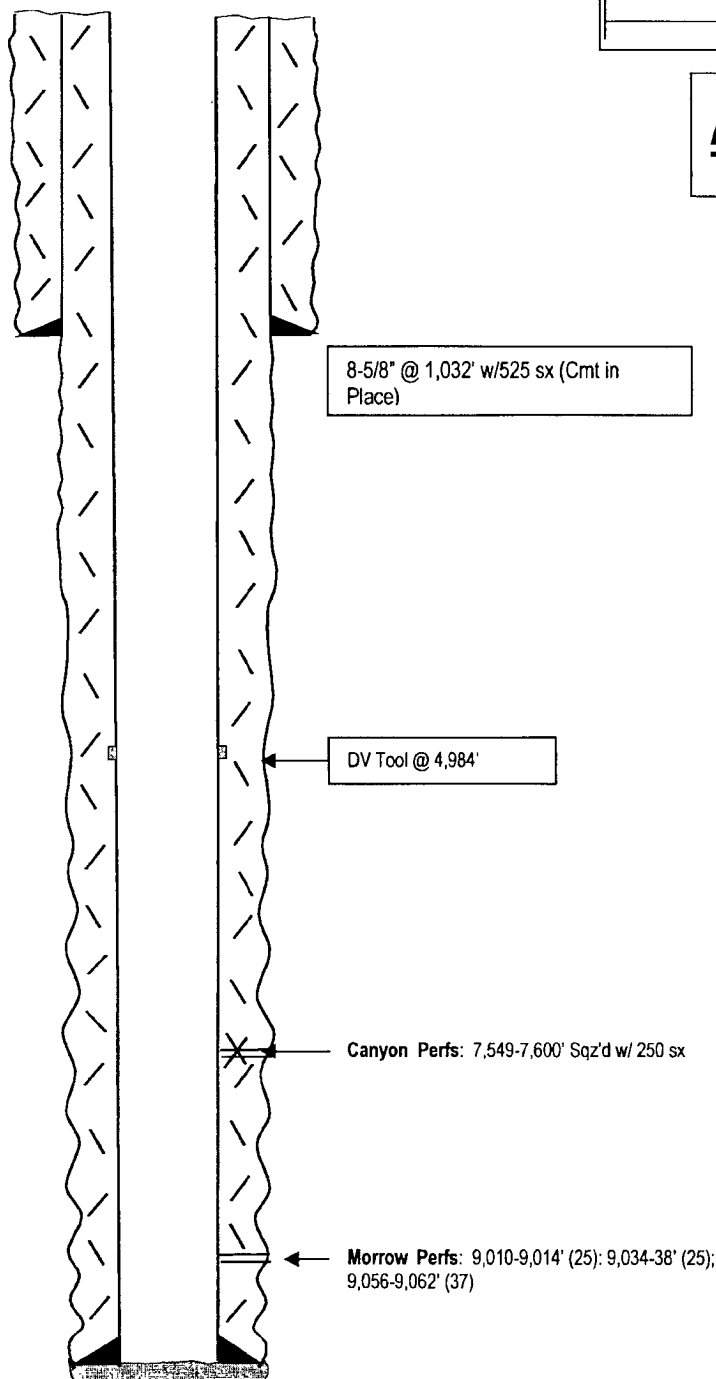
CASING PROGRAM

8-5/8" 24#	1,032'
5-1/2" 15.5#/17#	9,295'

After

11" Hole

7-7/8" Hole



FC: 9251'
TD: 9,313'

5-1/2" @ 9,295' w/
1st Stage: 870 sx (Didn't Circ)
2nd Stage: 855 sx (Circ)

TOPS

SA	512'
Glorieta	1,988'
BS	3,230'
3 rd BS	5,080'
WC	5,300'
Penn Lm	7,377'
Cisco	7,408'
Reef	7,543'
Morrow Cl	9,055'
Barnett	9,216'

Not to Scale

11/3/09
DC/Hill

MARTIN YATES, III
1912-1985

FRANK W. YATES
1936-1986

S.P. YATES
1914-2008



105 SOUTH FOURTH STREET
ARTESIA, NEW MEXICO 88210-2118
TELEPHONE (575) 748-1471

JOHN A. YATES
CHAIRMAN OF THE BOARD
PRESIDENT

JOHN A. YATES JR.
ASSISTANT TO THE PRESIDENT

JAMES S. BROWN
CHIEF OPERATING OFFICER

JOHN D. PERINI
CHIEF FINANCIAL OFFICER

RECEIVED

DEC - 8 2009

NMOCD ARTESIA

December 7, 2009

Oil Conservation Division, District II Office
1301 W. Grand Ave.
Artesia, NM 88210

Re: Carl TP Com #2
Section 22-T20S-R24E
Eddy County, New Mexico
H2S Contingency Plan

Sources at Yates Petroleum Corporation have relayed information to me that they believe there will not be enough H2S anticipated from the surface to the Morrow formation to even meet the OCD's minimum requirements for the submission of a contingency plan per Rule 118.

Thank you,

YATES PETROLEUM CORPORATION

Tina Huerta
Regulatory Compliance Supervisor