

Submit 1 Copy To Appropriate District  
Office  
District I  
1625 N. French Dr., Hobbs, NM 88240  
District II  
1301 W. Grand Ave., Artesia, NM 88210  
District III  
1000 Rio Brazos Rd., Aztec, NM 87410  
District IV  
1220 S. St. Francis Dr., Santa Fe, NM  
87505

State of New Mexico  
Energy, Minerals and Natural Resources

Form C-103  
October 13, 2009

OIL CONSERVATION DIVISION  
1220 South St. Francis Dr.  
Santa Fe, NM 87505

WELL API NO.  
30-015-31401  
5. Indicate Type of Lease  
STATE ☒ FEE ☐  
6. State Oil & Gas Lease No.  
KK 06527

SUNDRY NOTICES AND REPORTS ON WELLS  
(DO NOT USE THIS FORM FOR PROPOSALS TO DRILL OR TO DEEPEN OR PLUG BACK TO A  
DIFFERENT RESERVOIR. USE "APPLICATION FOR PERMIT" (FORM C-101) FOR SUCH  
PROPOSALS)

1. Type of Well: Oil Well ☒ Gas Well ☐ Other ☐

2. Name of Operator  
Premier Oil & Gas Inc.

3. Address of Operator  
P.O. Box 1246, Artesia, NM 88211-1246

4. Well Location

Unit Letter M : 660 feet from the South line and 810 feet from the  
West line

Section 25

Township 20S

Range 27E

NMPM

Eddy

County

11. Elevation (Show whether DR, RKB, RT, GR, etc.)  
3304' KB

RECEIVED

DEC 16 2009

NMOCD ARTESIA

7. Lease Name or Unit Agreement Name

Eddy FV St.

8. Well Number #5

9. OGRID Number 17985

10. Pool name or Wildcat  
Avalon Delaware

12. Check Appropriate Box to Indicate Nature of Notice, Report or Other Data

NOTICE OF INTENTION TO:

PERFORM REMEDIAL WORK ☐ PLUG AND ABANDON ☐  
TEMPORARILY ABANDON ☐ CHANGE PLANS ☐  
PULL OR ALTER CASING ☐ MULTIPLE COMPL ☐  
DOWNHOLE COMMINGLE ☐

OTHER: ☐

SUBSEQUENT REPORT OF:

REMEDIAL WORK ☒ ALTERING CASING ☐  
COMMENCE DRILLING OPNS. ☐ P AND A ☐  
CASING/CEMENT JOB ☐

OTHER: Temporarily Abandoned  
☒

13. Describe proposed or completed operations. (Clearly state all pertinent details, and give pertinent dates, including estimated date of starting any proposed work). SEE RULE 19.15.7.14 NMAC. For Multiple Completions: Attach wellbore diagram of proposed completion or recompletion.

See Attached completion report. Chart Provided (not OCD witnessed).

Temporary Abandoned Status Approved

Until 12/23/2014

LAST PREV REPORT 7/1/09

Spud Date:

Rig Release Date:

I hereby certify that the information above is true and complete to the best of my knowledge and belief.

SIGNATURE Kenneth C. Jones TITLE VP DATE December 10, 2009

Type or print name Kenneth C. Jones E-mail address: ken.jones@premieroilgas.com PHONE: 214-543-3688

For State Use Only

APPROVED BY: RENEE L. NAG TITLE COMPLIANCE OFFICER DATE 12/23/09  
Conditions of Approval (if any):

## FV #5 Delaware Workover

### Phase 1 – Squeeze Perfs 2513-2892

9/16/09 Rig up pulling unit. TOH with rods and tubing. TIH with casing scraper on 2 7/8" tubing to 2900'. TOH with scraper. SDON.

9/17/09 TIH with cement retainer and set at 2460'. Pump 30 bbls. of water at 3bpm and 400psi. SDON.

9/18/09 Rig up Schlumberger manifold and cement truck. Pump 289 sks of class C cement at 3bpm. Max pressure 1050. Well went on vacuum after all cement was pumped. Staged flush by pumping 1bbls every 15 min (estimated total flush 15 bbls). Eight bbls. in regained pressure. 13<sup>th</sup> bbl pressure up to 2900psi dropped back to 1000 psi in 30 min. 14<sup>th</sup> bbl to 2900 psi dropped to 1900 psi in 15 min. Stung out of retainer and reverse circulated 30 bbls. SDOW.

9/21/09 Rig up reverse unit. TIH w/6 drill collars on 2 7/8" tubing. Drill cement retainer for 3.5 hrs. Drill cement to 2676' (7 jts. down). Pull up into intermediate casing. SDON

9/22/09 Continue drilling cement to 2910'. Bit fell through. Pressure test csg. to 1200psi. No pressure lost. Drill Composite plug at 3000' and push to 4000'. TOH with bit. TIH and make scraper run. TOH w/scraper. Release reverse unit. SDON

9/23/09 TIH with Packer. Set at 2990' and swab perfs from 3019-88. Fluid entry was 1200'/hr. Will squeeze off perfs. TOH with packer. SDON

9/24/09 Rig up wireline and set composite plug at 3188'. Pressure test plug to 2000 psi. Held okay. TIH w/cement retainer to 2954'. Test pack side to 1000 psi. Held okay. Inject 15 bbls. water at 2bpm at 900psi. Will cement tomorrow. SDON

9/25/09 Rig up Schlumberger. Pump 63 sks of Class C at 3 bpm with max pressure of 1000 psi. Well head pressure fell to 150 psi before flush. Staged flush at 1 bbl every 15 min. 7<sup>th</sup> bbl had 1500psi on well head. Stung out of retainer and reverse circulate double tubing capacity. SWIOW.

9/28/09 Rig up reverse unit. Drill out cmt. retainer and cement to 3150'. Pressure test csg to 1000psi. Held okay. Drill out remaining cement and composite plug. TOH with tubing and drill collars. Release reverse unit. SDON.

9/29/09 TIH w/ csg scraper to 3250' TOH and lay down scraper. TIH with 120 jts. of tubing and rods. Release pulling unit until 2<sup>nd</sup> phase of completion to begin.

### 2<sup>nd</sup> Phase

10/9/09 Rig Teaco Unit. TOH with rods and tubing. Rig up Warrior wireline. Perf 3674, 3677, 3680-84, 3708-09, 3725, 3732-33, 3756-57 w/1spf (total 13 holes). SDOWE

10/12/09 Rig up Schlumberger. TIH w/packer on tubing. Spot 2bbls of acid. Set packer at 3620'. Acidize perfs from 3674-3756 w/ 1000 gals 7 1/2% NeFe w/clay stabilizers. Formation broke at 1650 psi. Average treatment pressure was 1250 psi at 4.2 bpm. Job balled off twice. 5min – 875 psi., 10 min – 867 psi., 15 min – 861 psi. Flow back. Swab dry after 10 swabs. No show. Set CIBP at 3620'. Pressure test to 1000psi. Held Good. TOH with tubing. SDON

10/13/09 Rig up Schlumberger wireline. Perf 3506, 3509-10, 3521-24, 3533, 3536-38, 3544, 3552-53, 3557-58, 3562-63 w 1 spf. Total 18 shots. Rig up Schlumberger and spot 2 bbls. of acid across perfs. Set packer at 3450'. Acidize perfs from 3506-3563 with 1000 gals. of 7 1/2% NeFe w/ clay stabilizers. Formation broke at 1600 psi. Average treatment pressure was 1230 psi at 4.4 bpm. Job balled off twice. 5 min – 883 psi., 10 min – 864 psi., 15 min – 857psi. Flow back. Swab dry after 8 swabs. No show. Set CIBP at 3460'. Pressure test to 1000 psi. Held good. TOH w/tubing. SDON

10/14/09 Rig up Warrior Wireline. Perf 3279-84, 3296-3300, 3340-46, 3372-73 w/1spf (total 20 shots). Rig up Schlumberger and spot 2 bbls. of acid across perfs. Set packer at 3230'. Acidize perfs from 3279-3373 with 1000 gals. of 7 1/2% NeFe w/clay stabilizers. Formation broke at 1850 psi. Average treatment pressure was 1150 psi at 4.4 bpm. Job balled off. 5 min- 885 psi, 10 min – 862 psi, 15 min – 851 psi. Swab dry. No show. SDON

10/15/09 7AM well had 75psi. Initial fluid level at 800'. Made 5 swab runs. No show. TIH w/tubing and rods. Reevaluate UCC formation.

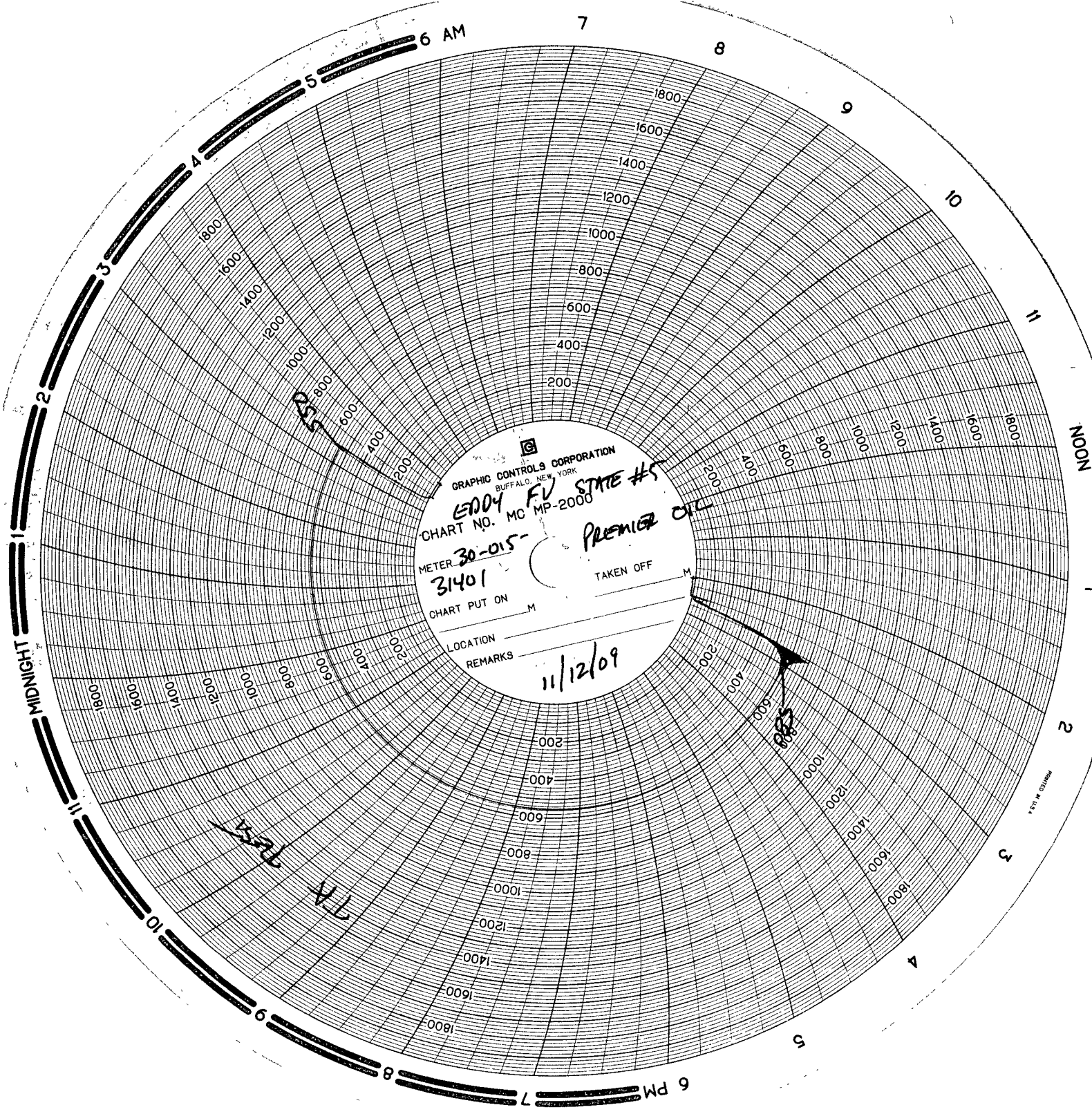
### Phase 3

11/09/09 Rig up Teaco. TOH w/rods and tubing. TIH w/ CIBP on tubing. Set at 3236.9'. Test casing to 1000 psi. TOH w/ tubing. Prep to perf and acidize in AM. SDON.

11/10/09 Rig up Warrior Wireline. Perf 2839, 2841, 2843, 2845, 2847 1 spf (total 5 holes) and 2671, 2673, 2675, 2677, 2679, 2681 and 2683, 2514, 2512 - 1 spf (total 9 holes). TIH with RBP and Packer. Set RBP @ 2862.6. Rig up Schlumberger and spot 1 bbl of acid. Set packer at 2768.9'. Formation broke at 2532#. Acidize perfs (2839-47) with 1000 gals. 7 1/2% NEFE at 4BPM. Dropped 15 balls – Balled off. ISIP – 955 psi. 15min – 286 psi. Swabbed well dry. No show of oil or gas. Set RBP at 2800'.

11/11/09 Rig up Schlumberger. Acidize perfs (2671-2512) with 1000gals. 7 1/2% NEFE at 4BPM. Dropped – 25 balls – balled off. ISIP – 878 psi. 15 min – 692 psi. Swabbed well dry. No show of oil or gas.

11/12/09 Retrieve RBP. Set CIBP at 2500' (bottom of intermediate casing). Laid down tubing and rods. Run a 30 minute pressure test at 500 psi. Casing held. TA well for future development.



GRAPHIC CONTROLS CORPORATION  
BUFFALO, NEW YORK  
EDDY FV STATE #5  
CHART NO. MC MP-2000  
METER 30-015-  
31401  
CHART PUT ON \_\_\_\_\_ M  
LOCATION \_\_\_\_\_  
REMARKS \_\_\_\_\_  
11/12/09  
TAKEN OFF \_\_\_\_\_ M  
PREMIER CIL