

District I  
1625 N French Dr., Hobbs, NM 88240  
District II  
1301 W Grand Avenue, Artesia, NM 88210  
District III  
1000 Rio Brazos Road, Aztec, NM 87410  
District IV  
1220 S St Francis Dr., Santa Fe, NM 87505

State of New Mexico  
Energy Minerals and Natural Resources

Oil Conservation Division  
1220 South St. Francis Dr.  
Santa Fe, NM 87505

**RECEIVED**  
MAR 12 2010  
NMOGD ARTESIA

Form C-101  
June 16, 2001

Submit to appropriate District Office

☐ AMENDED REPORT

**APPLICATION FOR PERMIT TO DRILL, RE-ENTER, DEEPEN,  
PLUGBACK, OR ADD A ZONE**

<sup>1</sup> Operator Name and Address Lime Rock Resources A, L P 1111 Bagby St., Suite 4600 Houston, TX 77002		<sup>2</sup> OGRID Number 255333
		<sup>3</sup> API Number 30 - 015 - 37691
<sup>3</sup> Property Code 38085	<sup>5</sup> Property Name Anthony	<sup>6</sup> Well No 1
<sup>9</sup> Proposed Pool 1 Red Lake, Glorieta-Yeso, NE		<sup>10</sup> Proposed Pool 2

<sup>7</sup> Surface Location									
UL or lot no	Section	Township	Range	Lot Idn	Feet from the	North/South line	Feet from the	East/West line	County
P	30	17S	28E		1050	SOUTH	330	EAST	EDDY

<sup>8</sup> Proposed Bottom Hole Location If Different From Surface									
UL or lot no	Section	Township	Range	Lot Idn	Feet from the	North/South line	Feet from the	East/West line	County

**Additional Well Information**

<sup>11</sup> Work Type Code N	<sup>12</sup> Well Type Code O	<sup>13</sup> Cable/Rotary R	<sup>14</sup> Lease Type Code S	<sup>15</sup> Ground Level Elevation 3629'
<sup>16</sup> Multiple N	<sup>17</sup> Proposed Depth 4,800'	<sup>18</sup> Formation Lower Yeso	<sup>19</sup> Contractor United	<sup>20</sup> Spud Date 7/12/10

**<sup>21</sup> Proposed Casing and Cement Program**

Hole Size	Casing Size	Casing weight/foot	Setting Depth	Sacks of Cement	Estimated TOC
12 1/4"	8 5/8"	24#	450'	375sx "C" + add.	Surface
7 7/8"	5 1/2"	15 5#	4,800'	450 sx 35/65 Poz/C	Lead
				550 sx C	Tail to surface

<sup>22</sup> Describe the proposed program. If this application is to DEEPEN or PLUG BACK, give the data on the present productive zone and proposed new productive zone. Describe the blowout prevention program, if any. Use additional sheets if necessary.

Lime Rock Resources A, L P. proposes to drill/test the Lower Yeso formation. Approximately 450 feet will be drilled with fresh water, then set and cement 8 5/8" surface casing to 450 feet.

Drill 7 7/8" hole to T.D. at approx. 4,800'. Run O/H logs. Set 5 1/2" casing to T.D. and cement will be circulated back to surface.

Will perforate the Yeso formation and stimulate, as necessary, for optimum production. Produce well by flowing or pumping.

H2S levels are not expected to be high enough to require an H2S contingency program.

See exhibit "A" for BOP.

<sup>23</sup> I hereby certify that the information given above is true and complete to the best of my knowledge and belief.

Signature:

*George R. Smith*

Printed name  
George R. Smith

Title:  
POA agent for Lime Rock Resources A, L.P.

E-mail Address  
gr.smith1@hotmail.com

Date:  
3/10/10

Phone:  
575-623-4940

**OIL CONSERVATION DIVISION**

Approved by:

Title

Approval Date

Expiration Date:

Conditions of Approval Attached ☐

DISTRICT I  
1625 N. FRENCH DR., HOBBS, NM 88240

DISTRICT II  
1301 W. GRAND AVENUE, ARTESIA, NM 88210

DISTRICT III  
1000 RIO BRAZOS RD., AZTEC, NM 87410

DISTRICT IV  
11885 S. ST. FRANCIS DR., SANTA FE, NM 87505

State of New Mexico  
Energy, Minerals and Natural Resources Department

OIL CONSERVATION DIVISION  
11885 SOUTH ST. FRANCIS DR.  
Santa Fe, New Mexico 87505

Form C-102  
Revised October 12, 2005  
Submit to Appropriate District Office  
State Lease - 4 Copies  
Fee Lease - 3 Copies

WELL LOCATION AND ACREAGE DEDICATION PLAT

☐ AMENDED REPORT

API Number <b>30-015-37691</b>	Pool Code <b>96836</b>	Pool Name <b>Prod Lake: GL-Yeso, NE</b>
Property Code <b>38085</b>	Property Name <b>ANTHONY</b>	Well Number <b>1</b>
OGRID No. <b>255333</b>	Operator Name <b>LIME ROCK RESOURCES A, L.P.</b>	Elevation <b>3629'</b>

Surface Location

UL or lot No. <b>P</b>	Section <b>30</b>	Township <b>17-S</b>	Range <b>28-E</b>	Lot Idn	Feet from the <b>1050</b>	North/South line <b>SOUTH</b>	Feet from the <b>330</b>	East/West line <b>EAST</b>	County <b>EDDY</b>
---------------------------	----------------------	-------------------------	----------------------	---------	------------------------------	----------------------------------	-----------------------------	-------------------------------	-----------------------

Bottom Hole Location If Different From Surface

UL or lot No.	Section	Township	Range	Lot Idn	Feet from the	North/South line	Feet from the	East/West line	County
Dedicated Acres <b>40</b>	Joint or Infill	Consolidation Code	Order No.						

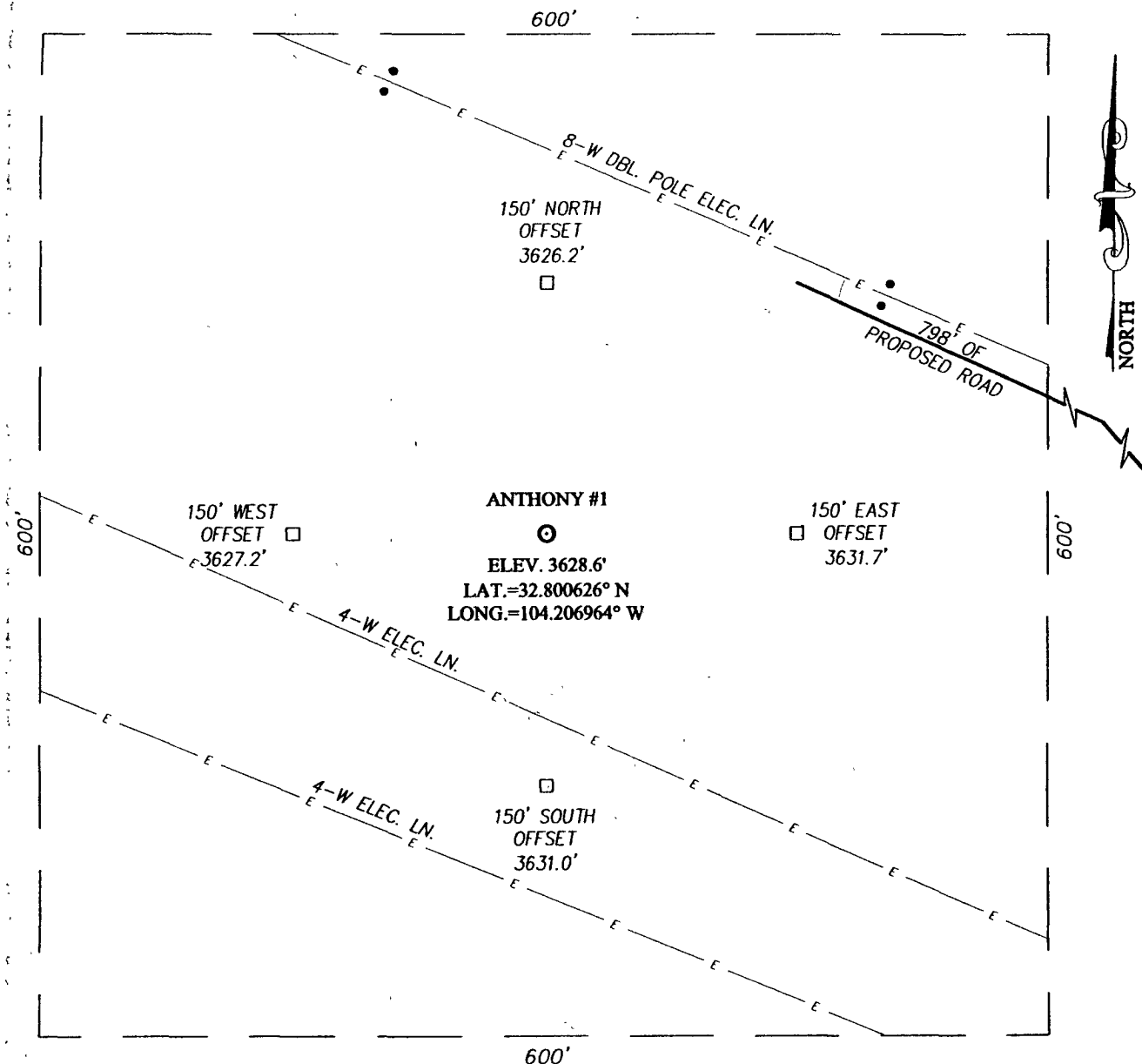
NO ALLOWABLE WILL BE ASSIGNED TO THIS COMPLETION UNTIL ALL INTERESTS HAVE BEEN CONSOLIDATED  
OR A NON-STANDARD UNIT HAS BEEN APPROVED BY THE DIVISION

LOT 1									
LOT 2									
LOT 3									
LOT 4									
<p>GEODETIC COORDINATES NAD 27 NME SURFACE LOCATION Y=655001.8 N X=538829.7 E LAT.=32.800626° N LONG.=104.206964° W</p>									
<p>XXXXXXXXXXXXXXXXXXXX S.L. 330' 1050' XXXXXXXXXXXXXXXXXXXX</p>									
<p>OPERATOR CERTIFICATION I hereby certify that the information herein is true and complete to the best of my knowledge and belief, and that this organization either owns a working interest or unleased mineral interest in the land including the proposed bottom hole location or has a right to drill this well at this location pursuant to a contract with an owner of such mineral or working interest, or to a voluntary pooling agreement or a compulsory pooling order heretofore entered by the division. <b>George R. Smith</b> 3/10/10 Signature Date George R. Smith, POA agent Printed Name</p>									
<p>SURVEYOR CERTIFICATION I hereby certify that the well location shown on this plat was plotted from field notes of actual surveys made by me or under my supervision, and that the same is true and correct to the best of my belief. FEBRUARY 2, 2010 Date Surveyed DSS Signature &amp; Seal of Professional Surveyor <b>GARY G. EIDSON</b> 2/6/10 10-11-0119 Certificate No. GARY G. EIDSON 12641 RONALD J. EIDSON 3239</p>									

# SECTION 30, TOWNSHIP 17 SOUTH, RANGE 28 EAST, N.M.P.M.

EDDY COUNTY

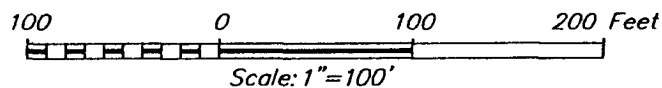
NEW MEXICO



REASON FOR NSL

## DIRECTIONS TO LOCATION


FROM THE INTERSECTION OF U.S. HWY. #82 AND CO. RD #205 (TV TOWER RD.), GO SOUTHEAST ON U.S. HWY. #82 APPROX. 0.1 MILE. TURN LEFT AND GO NORTH APPROX. 300 FEET. TURN LEFT AND GO NORTHWEST APPROX. 150 FEET TO THE LIME ROCK RESOURCES A, L.P. WILLIAM A FEDERAL #5 WELL. FOLLOW PROPOSED ROAD SURVEY FROM THE NORTHWEST CORNER OF THE LIME ROCK RESOURCES A, L.P. WILLIAM A FEDERAL #5 WELL PAD NORTHWEST APPROX. 798 FEET. THIS LOCATION STAKE IS APPROX. 212 FEET SOUTHWEST.



## LIME ROCK RESOURCES A, L.P.

ANTHONY #1  
LOCATED 1050 FEET FROM THE SOUTH LINE  
AND 330 FEET FROM THE EAST LINE OF SECTION 30;  
TOWNSHIP 17 SOUTH, RANGE 28 EAST, N.M.P.M.,  
EDDY COUNTY, NEW MEXICO

Survey Date: 02/02/10	Sheet 1 of 1 Sheets
W.O. Number: 10.11.0119	Dr By: DSS
Date: 02/04/10	10110119
	Scale: 1"=100'



PROVIDING SURVEYING SERVICES  
SINCE 1946  
**JOHN WEST SURVEYING COMPANY**  
412 N. DAL PASO  
HOBBS, N.M. 88240  
(575) 393-3117

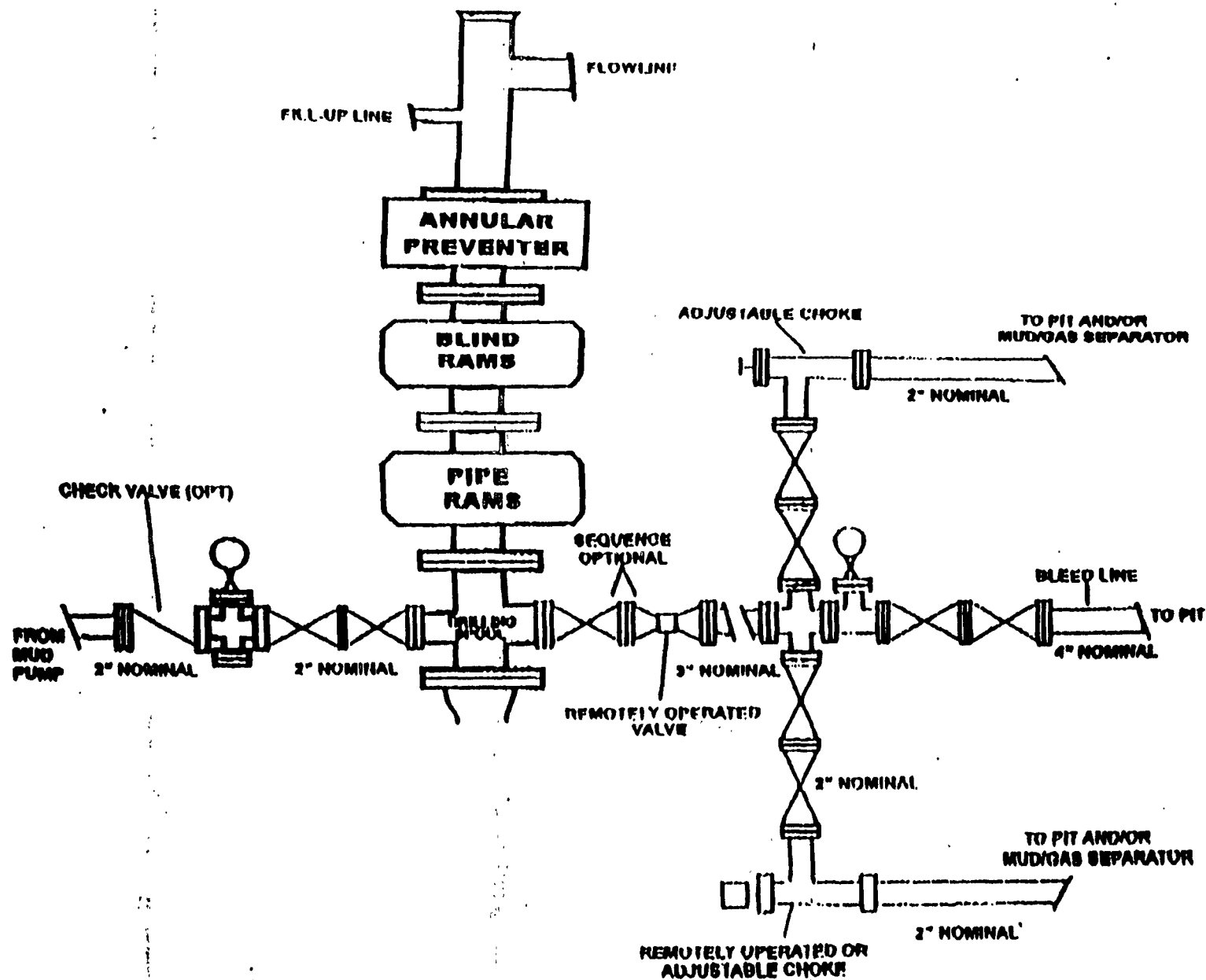
**BOP DIAGRAM  
3000# SYSTEM**

EXHIBIT "A"  
LINE ROCK RESOURCES A, L.P.  
BOP Specifications