

DISTRICT I  
1825 N. FRENCH DR., HOBBS, NM 88240

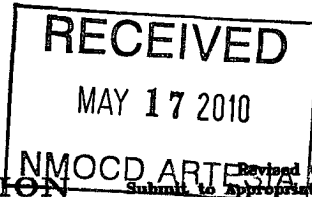
DISTRICT II  
1901 W. GRAND AVENUE, ARTESIA, NM 88210

DISTRICT III  
1000 Rio Brazos Rd., Artesia, NM 87410

DISTRICT IV  
1220 S. ST. FRANCIS DR., SANTA FE, NM 87505

State of New Mexico  
Energy, Minerals and Natural Resources Department

OIL CONSERVATION DIVISION  
1220 SOUTH ST. FRANCIS DR.  
Santa Fe, New Mexico 87505



Form C-102  
Revised October 12, 2005  
Submit to Appropriate District Office  
State Lease - 4 Copies  
Fee Lease - 3 Copies

WELL LOCATION AND ACREAGE DEDICATION PLAT

☐ AMENDED REPORT

|                                   |   |   |
|-----------------------------------|---|---|
| API Number<br><b>30 015 37422</b> | Pool Code<br><b>30215</b>                         | Pool Name<br><b>HAY HOLLOW; Bone Spring</b> |
| Property Code                     | Property Name<br><b>SRO STATE UNIT COM</b>        | Well Number<br><b>101</b>                   |
| OGRID No.                         | Operator Name<br><b>MARBOB ENERGY CORPORATION</b> | Elevation<br><b>3126'</b>                   |

Surface Location

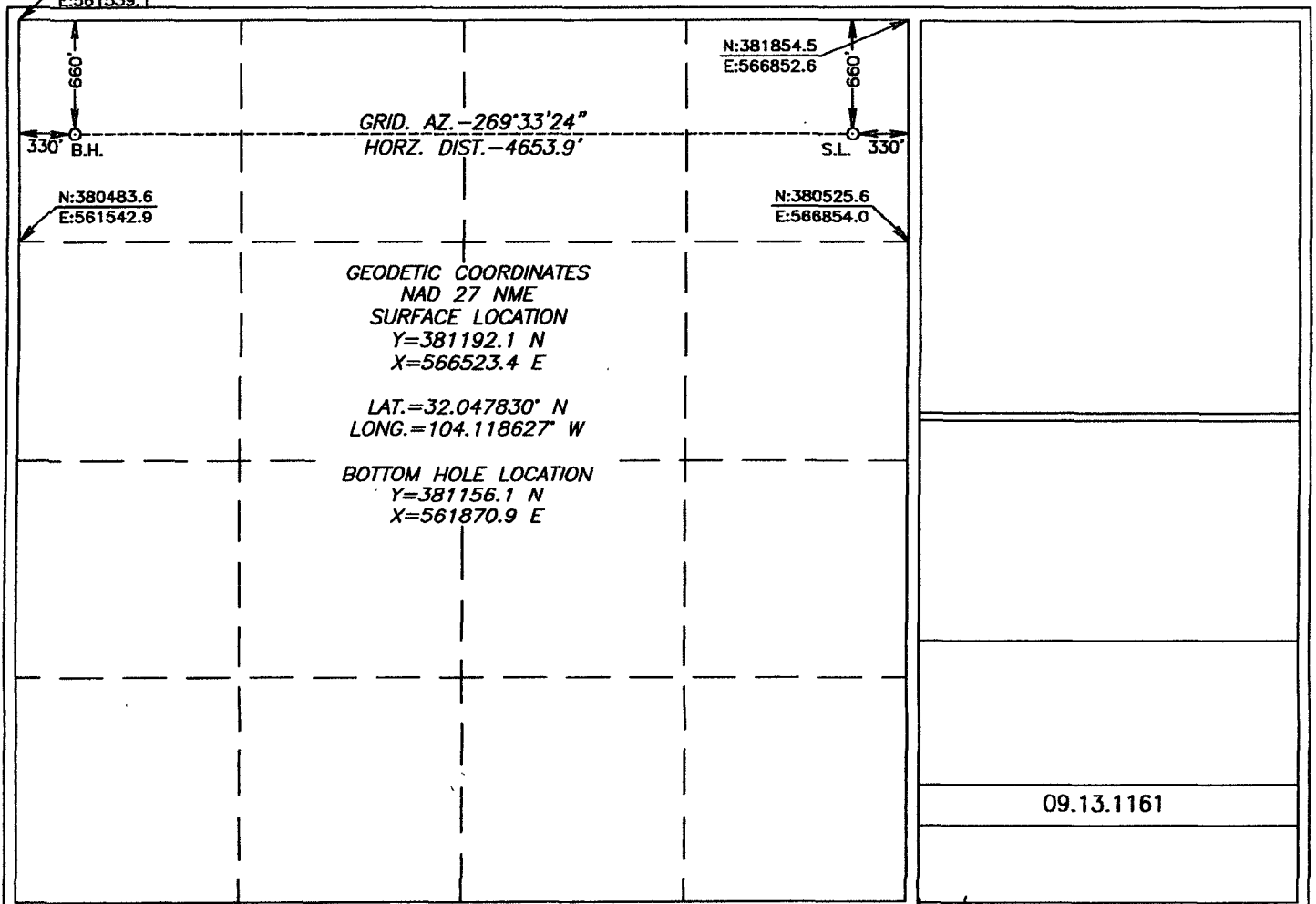
| UL or lot No. | Section | Township | Range | Lot Idn | Feet from the | North/South line | Feet from the | East/West line | County |
|---------------|---------|----------|-------|---------|---------------|------------------|---------------|----------------|--------|
| A             | 18      | 26-S     | 28-E  |         | 660           | NORTH            | 330           | EAST           | EDDY   |

Bottom Hole Location If Different From Surface

| UL or lot No. | Section | Township | Range | Lot Idn | Feet from the | North/South line | Feet from the | East/West line | County |
|---------------|---------|----------|-------|---------|---------------|------------------|---------------|----------------|--------|
| D             | 18      | 26-S     | 28-E  |         | 660           | NORTH            | 330           | WEST           | EDDY   |

|                 |                 |                    |           |
|-----------------|-----------------|--------------------|-----------|
| Dedicated Acres | Joint or Infill | Consolidation Code | Order No. |
|-----------------|-----------------|--------------------|-----------|

NO ALLOWABLE WILL BE ASSIGNED TO THIS COMPLETION UNTIL ALL INTERESTS HAVE BEEN CONSOLIDATED  
OR A NON-STANDARD UNIT HAS BEEN APPROVED BY THE DIVISION



Please complete your paperwork!