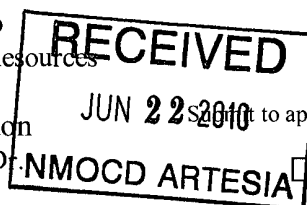


District I  
1625 N French Dr, Hobbs NM 88240  
District II  
1301 W Grand Avenue, Artesia, NM 88210 ✓  
District III  
1000 Rio Brazos Road, Aztec, NM 87410  
District IV  
1220 S St Francis Dr, Santa Fe, NM 87505

State of New Mexico  
Energy Minerals and Natural Resources

Oil Conservation Division  
1220 South St. Francis Dr  
Santa Fe, NM 87505



Form C-101  
June 16, 2008

Submit to appropriate District Office

☐ AMENDED REPORT

**APPLICATION FOR PERMIT TO DRILL, RE-ENTER, DEEPEN, PLUGBACK, OR ADD A ZONE**

<sup>1</sup> Operator Name and Address Adventure Exploration Partners, LLC 500 W. Texas St Ste 1000 Midland, Texas 79701		<sup>2</sup> OGRID Number 257568
		<sup>3</sup> API Number 30-015-38055
<sup>4</sup> Property Code 306501	<sup>5</sup> Property Name Carter	<sup>6</sup> Well No 2
<sup>9</sup> Proposed Pool 1 Loving, Delaware South		<sup>10</sup> Proposed Pool 2

<sup>7</sup> Surface Location

UL or lot no.	Section	Township	Range	Lot Idn	Feet from the	North/South line	Feet from the	East/West line	County
P	17	23S	28E		660	South	330	East	Eddy

<sup>8</sup> Proposed Bottom Hole Location If Different From Surface

UL or lot no	Section	Township	Range	Lot Idn	Feet from the	North/South line	Feet from the	East/West line	County

Additional Well Information

<sup>11</sup> Work Type Code New Well	<sup>12</sup> Well Type Code Oil	<sup>13</sup> Cable/Rotary Rotary	<sup>14</sup> Lease Type Code Private	<sup>15</sup> Ground Level Elevation 3034'
<sup>16</sup> Multiple No	<sup>17</sup> Proposed Depth 6300'	<sup>18</sup> Formation Delaware	<sup>19</sup> Contractor TBD	<sup>20</sup> Spud Date July 2010

<sup>21</sup> Proposed Casing and Cement Program

Hole Size	Casing Size	Casing weight/foot	Setting Depth	Sacks of Cement	Estimated TOC
11"	8-5/8"	24	325'	300	Surface
7-7/8"	5-1/2"	15.5	6300'	1000	Surface

<sup>22</sup> Describe the proposed program. If this application is to DEEPEN or PLUG BACK, give the data on the present productive zone and proposed new productive zone. Describe the blowout prevention program, if any. Use additional sheets if necessary.

Mud Program- 0-325', mud wt 8.4-9.0 ppg fresh wtr native spud mud; 325-6300', mud wt 10 ppg brine water with Starch additions at TD.

BOPE- diagram attached  
Wellbore diagram attached

**Permit Expires 2 Years From Approval  
Date Unless Drilling Underway**

H2S-no H2S seen immediate area. Will have minimum compliance package set up prior to drilling out of 8-5/8" casing. H2S plan attached.

<sup>23</sup> I hereby certify that the information given above is true and complete to the best of my knowledge and belief

Signature

Printed name Hal Lee

Title Agent/Operations Mgr

E-mail Address hlee@adventureexpl.com

Date 6/17/2010

Phone 432-684-8006

OIL CONSERVATION DIVISION

Approved by

Title

**Geologist**

Approval Date

07/29/10

Expiration Date

07/29/12

Conditions of Approval Attached ☐

DISTRICT I  
1625 N. French Dr., Hobbs, NM 88240

DISTRICT II  
1301 W. Grand Avenue, Artesia, NM 88210

DISTRICT III  
1000 Rio Brazos Rd., Aztec, NM 87410

DISTRICT IV  
1220 S. St. Francis Dr., Santa Fe, NM 87505

State of New Mexico  
Energy, Minerals and Natural Resources Department

Form C-102  
Revised October 15, 2009

Submit one copy to appropriate  
District Office

**OIL CONSERVATION DIVISION**  
1220 South St. Francis Dr.  
Santa Fe, New Mexico 87505

WELL LOCATION AND ACREAGE DEDICATION PLAT

☐ AMENDED REPORT

API Number <b>30-015-38055</b>	Pool Code <b>40380</b>	Pool Name <b>Loving, Delaware South</b>
Property Code	Property Name <b>CARTER</b>	Well Number <b>2</b>
OGRID No. <b>257568</b>	Operator Name <b>ADVENTURE EXPLORATION Partners, LLC</b>	Elevation <b>3034'</b>

Surface Location

UL or lot No.	Section	Township	Range	Lot Idn	Feet from the	North/South line	Feet from the	East/West line	County
<b>P</b>	<b>17</b>	<b>23 S</b>	<b>28 E</b>		<b>660</b>	<b>SOUTH</b>	<b>330</b>	<b>EAST</b>	<b>EDDY</b>

Bottom Hole Location If Different From Surface

UL or lot No.	Section	Township	Range	Lot Idn	Feet from the	North/South line	Feet from the	East/West line	County
Dedicated Acres <b>40</b>	Joint or Infill	Consolidation Code	Order No.						

NO ALLOWABLE WILL BE ASSIGNED TO THIS COMPLETION UNTIL ALL INTERESTS HAVE BEEN CONSOLIDATED  
OR A NON-STANDARD UNIT HAS BEEN APPROVED BY THE DIVISION

	<p><b>OPERATOR CERTIFICATION</b></p> <p>I hereby certify that the information contained herein is true and complete to the best of my knowledge and belief, and that this organization either owns a working interest or unleased mineral interest in the land including the proposed bottom hole location or has a right to drill this well at this location pursuant to a contract with an owner of such a mineral or working interest, or to a voluntary pooling agreement or a compulsory pooling order heretofore entered by the division.</p> <p><i>Ann E. Ritchie</i> <b>6-17-10</b> Signature Date</p> <p><b>Ann E. Ritchie</b> Printed Name</p>
	<p><b>SURVEYOR CERTIFICATION</b></p> <p>I hereby certify that the well location shown on this plat was plotted from field notes of actual surveys made by me or under my supervision, and that the same is true and correct to the best of my belief.</p>
	<p>APPROVED <b>APR 20, 2010</b></p> <p>Date Surveyed</p> <p>Signature &amp; Seal of Professional Surveyor</p> <p><b>7977</b></p>
	<p>Certificate No. <b>Gary L. Jones</b> <b>7977</b></p> <p><b>BASIN SURVEYS</b></p>

**SURFACE LOCATION**  
Lat - N 32°17'59.12"  
Long - W 104°06'07.62"  
NMSPCE- N 472860.613  
E 612778.258  
(NAD-83)

# Adventure Exploration Patners, LLC

Brushy Canyon Prospect

Loving Delaware South

Carter No. 2

Eddy County, New Mexico

Proposed Wellbore

30-015-XXXXX

KB: XXXX'

GL: ~3034'

660' FSL & 330' FEL  
Sec. 17, T23S, R28E, UL P  
Eddy Co, NM

TD'd: NA  
Spud: 7/2010

Bit Size: 11"  
8.4 MW, 32+ Vis, Spud Mud

8-5/8" 24# J-55@ 325' Cmt w/~300sx C 2% CC  
Cmt circ to surface

Bit Size: 7-7/8"  
10 MW, Brine water w/Sweeps as needed  
Lite mud up @ TD w/ starch

5-1/2" 15.50# K55 LTC 6,300'  
Cmt w/ 800 sks C Lite + 200 C 50/50 poz  
Calc TOC surface

PBTD (FC): ~6,250' TD: ~6,300'

## Expected Tops

Salado ~ 374'

Base of salt ~ 2264'

Lamar LS ~ 2482'

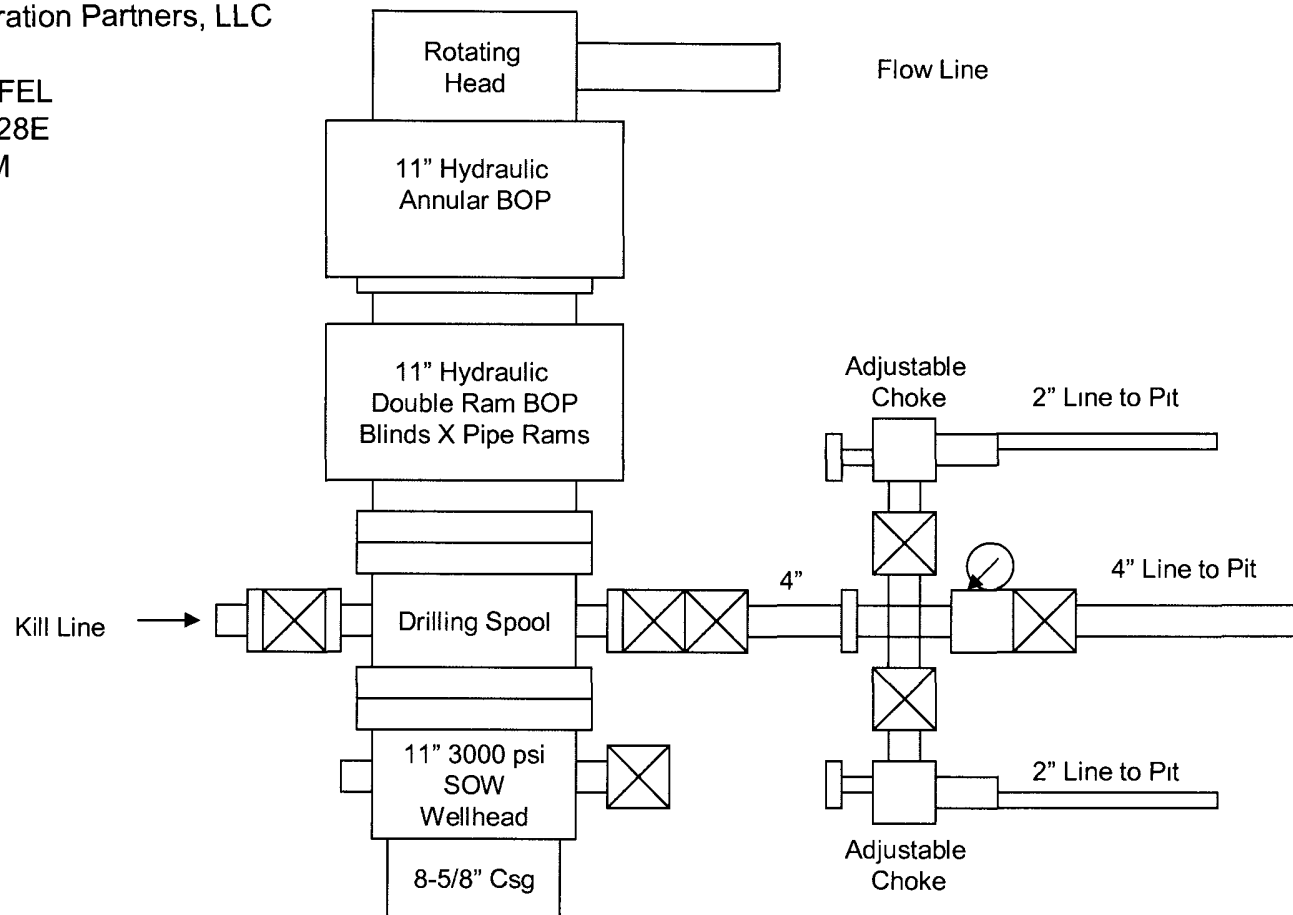
Bell Canyon ~ 2500'

Cherry Canyon ~3550'

Brushy Canyon ~ 4430'

Bone Springs ~6067'

Adventure Exploration Partners, LLC  
Carter No. 2  
660' FSL & 330' FEL  
Sec 17, T23S, R28E  
Eddy County, NM



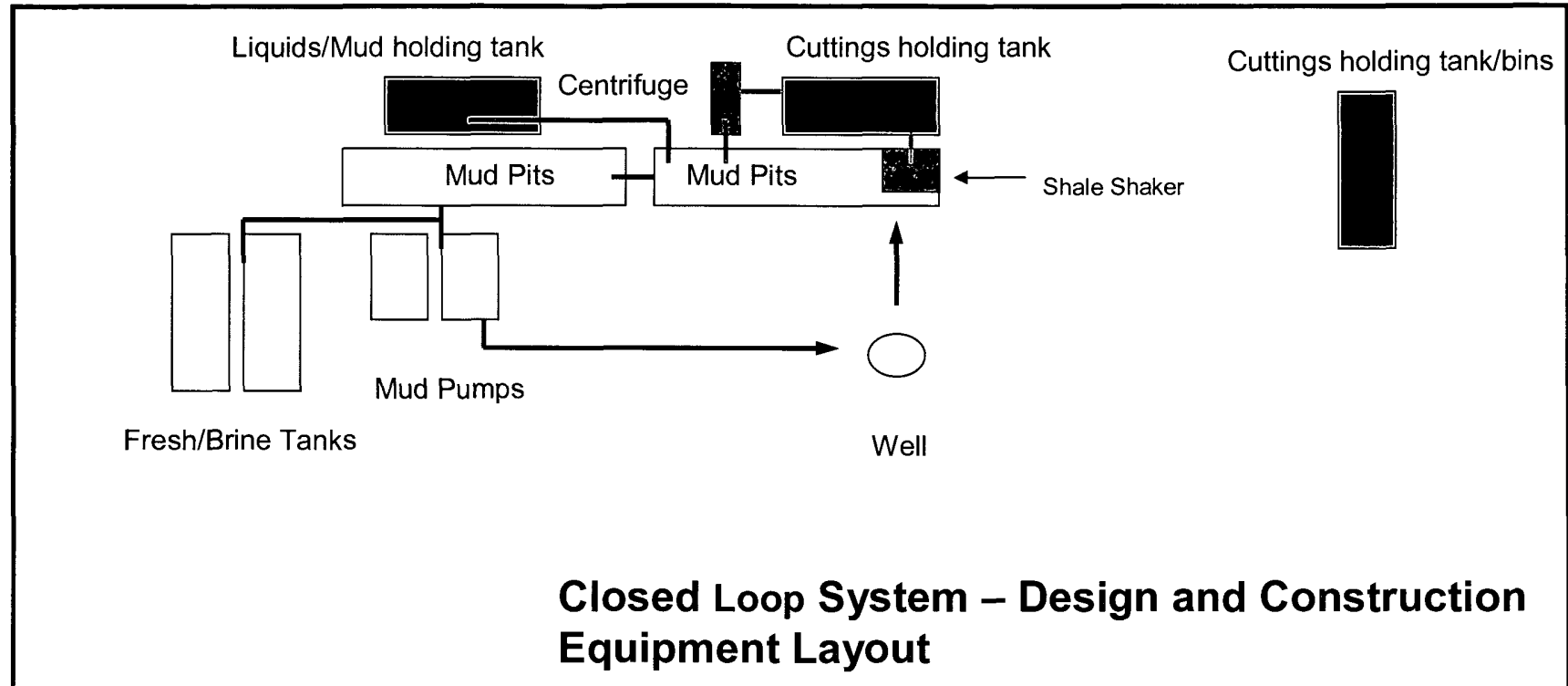
3000 psi Working Pressure  
BOPE Configuration  
And Choke Manifold

Exhibit " \_\_\_\_ "

# Adventure Exploration Partners, LLC

Carter No. 2

17-23-28 Eddy County, NM



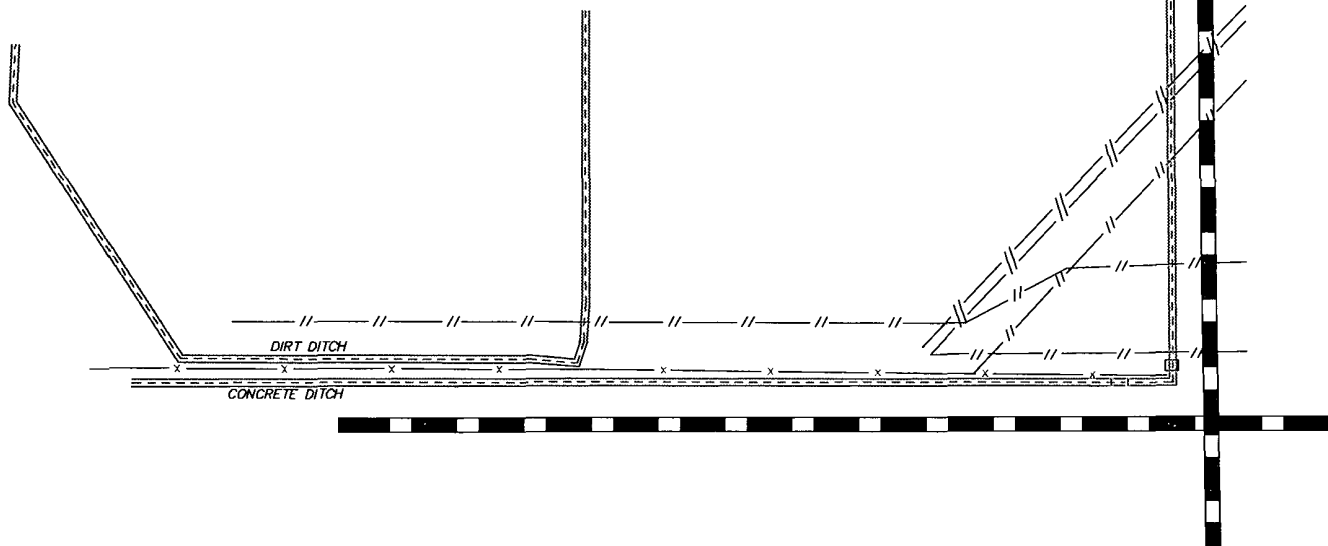
## Operating and Maintenance Plan

1. All liquids and solids contained in closed loop system
2. All equipment will be monitored continuously by Solids control personnel while drilling
3. All solids and contaminated fluid hauled to an approved facility as required.

SECTION 34, TOWNSHIP 25 SOUTH, RANGE 26 EAST, N.M.P.M.,  
EDDY COUNTY, NEW MEXICO.

ADVENTURE EXPLORATION  
CARTER #2  
ELEV. - 3034'

○  
Lat - N 32°17'59.12"  
Long - W 104°06'07.62"  
NMSPCE- N 472860.613  
E 612778.258  
(NAD-83)



200 0 200 400 FEET  
SCALE: 1" = 200'

Directions to Location

AT THE JUNCTION OF CARTER AND LONDON, LOOK  
NORTHWEST AND SEE LOCATION FLAG.

**ADVENTURE EXPLORATION**

REF: CARTER #2 / WELL PAD TOPO

THE CARTER #2 LOCATED 660'  
FROM THE SOUTH LINE AND 330' FROM THE EAST LINE OF  
SECTION 17, TOWNSHIP 23 SOUTH, RANGE 28 EAST,  
N.M.P.M., EDDY COUNTY, NEW MEXICO.

**BASIN SURVEYS** P.O. BOX 1786-HOBBS, NEW MEXICO

W.O. Number. 22675

Drawn By: J. SMALL

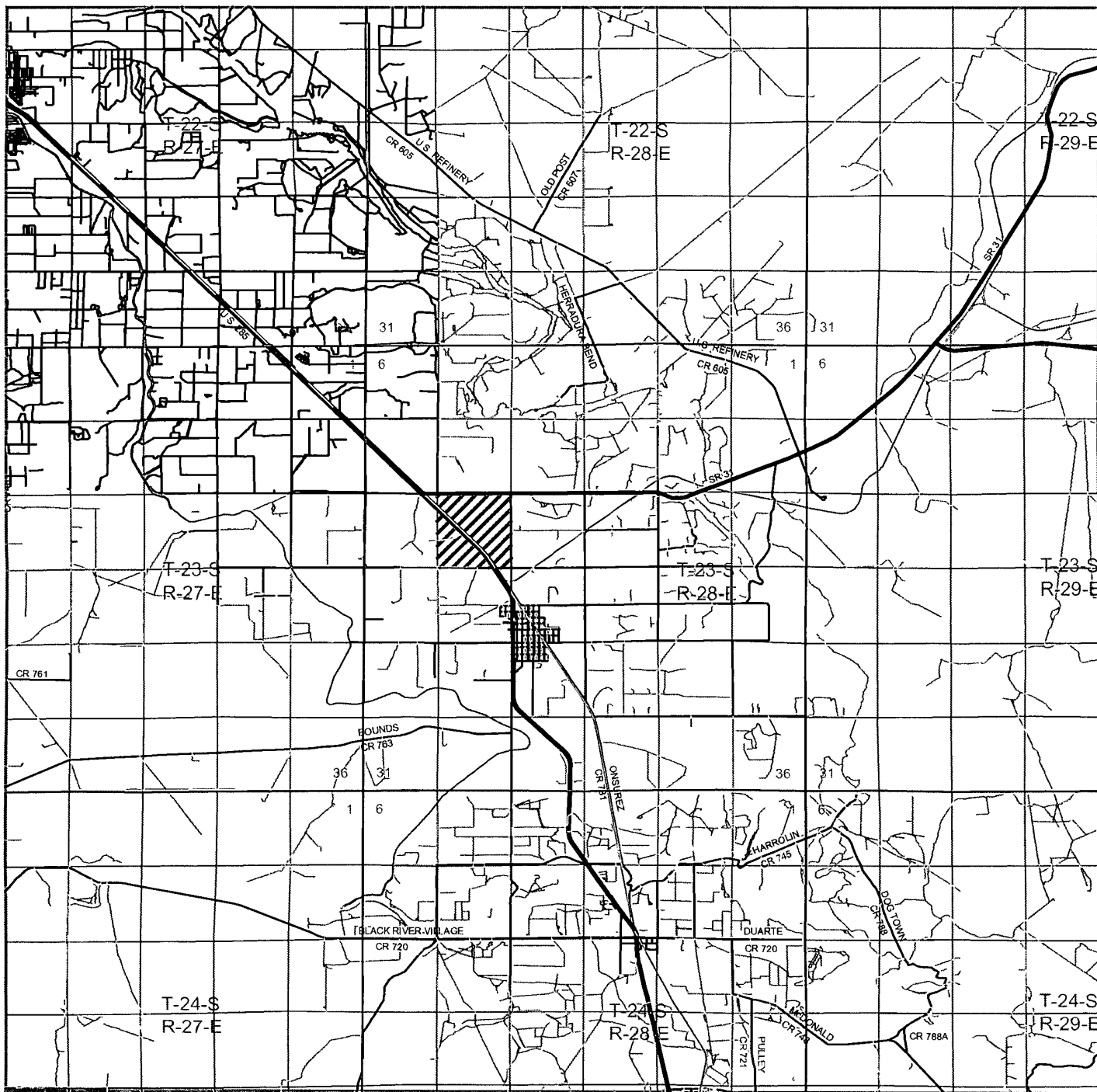
Date: 04-22-2010

Disk: JMS 22675

Survey Date: 04-20-2010

Sheet 1 of 1 Sheets





**CARTER #2**

Located 660' FSL and 330' FEL

Section 17, Township 23 South, Range 28 East,  
N.M.P.M., Eddy County, New Mexico.

**basin**  
**surveys**  
focused on excellence  
in the oilfield

P.O. Box 1786  
1120 N. West County Rd.  
Hobbs, New Mexico 88241  
(575) 393-7316 - Office  
(575) 392-2206 - Fax  
basinsurveys.com

W.O. Number: JMS 22675

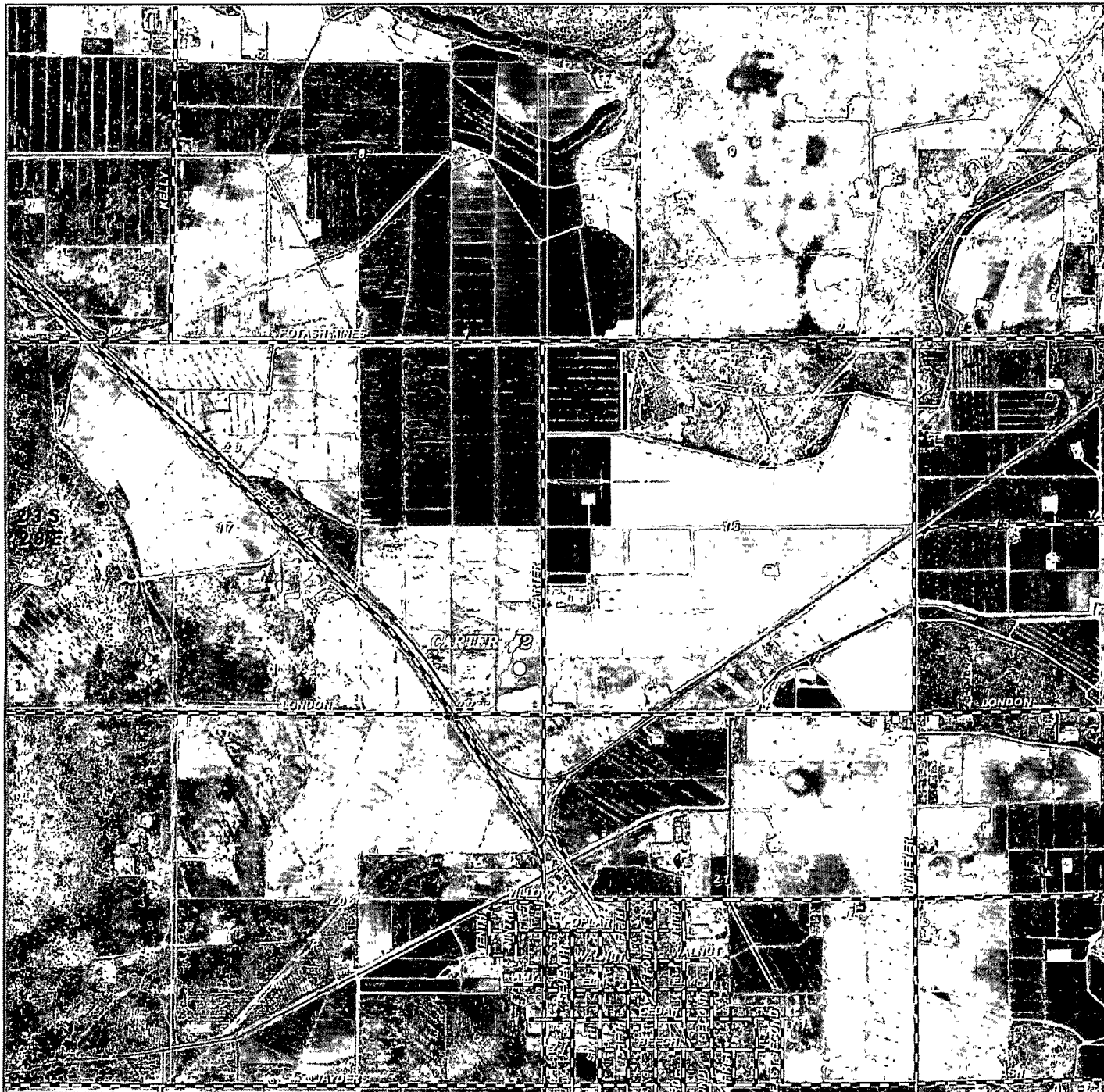
Survey Date: 04-20-2010

Scale: 1" = 2 Miles

Date: 04-22-2010

**ADVENTURE  
EXPLORATION**





**CARTER #2**  
 Located 660' FSL and 330' FEL  
 Section 17, Township 23 South, Range 28 East,  
 N.M.P.M., Eddy County, New Mexico.



P.O. Box 1786  
 1120 N. West County Rd.  
 Hobbs, New Mexico 88241  
 (575) 393-7316 - Office  
 (575) 392-2206 - Fax  
 basinsurveys.com

W.O Number: JMS 22675

Scale: 1" = 2000'

YELLOW TINT - USA LAND  
 BLUE TINT - STATE LAND  
 NATURAL COLOR - FEE LAND

**ADVENTURE  
 EXPLORATION**

# Adventure Exploration Partners, LLC

## HYDROGEN SULFIDE (H<sub>2</sub>S) CONTINGENCY PLAN

**Assumed 100 ppm ROE = 3000'**

**100 ppm H<sub>2</sub>S concentration shall trigger activation of this plan.**

### Emergency Procedures

**In the event of a release of gas containing H<sub>2</sub>S, the first responder(s) must**

- **Isolate the area and prevent entry by other persons into the 100 ppm ROE.**
- **Evacuate any public places encompassed by the 100 ppm ROE.**
- **Be equipped with H<sub>2</sub>S monitors and air packs in order to control the release.**
- **Use the "buddy system" to ensure no injuries occur during the response**
- **Take precautions to avoid personal injury during this operation.**
- **Contact operator and/or local officials to aid in operation. See list of phone numbers attached.**
- **Have received training in the**
  - **Detection of H<sub>2</sub>S, and**
  - **Measures for protection against the gas,**
  - **Equipment used for protection and emergency response.**

### Ignition of Gas source

Should control of the well be considered lost and ignition considered, take care to protect against exposure to Sulfur Dioxide (SO<sub>2</sub>). Intentional ignition must be coordinated with the NMOCD and local officials. Additionally the NM State Police may become involved. NM State Police shall be the Incident Command on scene of any major release. Take care to protect downwind whenever this is an ignition of the gas.

### **Characteristics of H<sub>2</sub>S and SO<sub>2</sub>**

<b>Common Name</b>	<b>Chemical Formula</b>	<b>Specific Gravity</b>	<b>Threshold Limit</b>	<b>Hazardous Limit</b>	<b>Lethal Concentration</b>
<b>Hydrogen Sulfide</b>	<b>H<sub>2</sub>S</b>	<b>1.189 Air = 1</b>	<b>10 ppm</b>	<b>100 ppm/hr</b>	<b>600 ppm</b>
<b>Sulfur Dioxide</b>	<b>SO<sub>2</sub></b>	<b>2.21 Air = 1</b>	<b>2 ppm</b>	<b>N/A</b>	<b>1000 ppm</b>

### **Contacting Authorities**

Adventure's personnel must liaison with local and state agencies to ensure a proper response to a major release. Additionally, the OCD must be notified of the release as soon as possible but no later than 4 hours. Agencies will ask for information such as type and volume of release, wind direction, location of release, etc. Be prepared with all information available including directions to site. The following call list of essential and potential responders has been prepared for use during a release. Adventure's response must be in coordination with the State of New Mexico's "Hazardous Materials Emergency Response Plan" (HMER).

# Adventure Exploration Partners, LLC

## H<sub>2</sub>S CONTINGENCY PLAN EMERGENCY CONTACTS

Company Office (432) 684-8006  
Answering Service (During Non-Office Hours) (432) 664-9040; 685-6073

### Key Personnel

Hal Lee Title: Drilling Manager (432) 664-9040

---

---

---

Ambulance 911  
State Police 575-746-2703  
City Police 575-746-2703  
Sheriff's Office 575-746-9888  
Fire Department 575-746-2701  
Local Emergency Planning Committee 575-746-2122  
New Mexico Oil Conservation Division 575-748-1283

### Carlsbad

Ambulance 911  
State Police 575-8885-3137  
City Police 575-885-2111  
Sheriff's Office 575-887-7551  
Fire Department 575-887-3798  
Local Emergency Planning Committee 575-887-6544  
US Bureau of Land Management 575-887-6544

New Mexico Emergency Response Commission (Santa Fe) 505-476-9600  
24 Hour 505-827-9126  
New Mexico State Emergency Operations Center 505-476-9635  
National Emergency Response Center (Washington, DC) 800-424-8802

### Other

Boots & Coots IWC 800-256-9688 or 281-931-8884  
Cudd PressureControl 915-699-0139 or 915-563-3356  
Halliburton 575-746-2757  
B. J. Services 575-746-3569  
Flight For Life – 4000 24<sup>th</sup> St. Lubbock, Texas 806-743-9911  
Aerocare – R3, Box 49F, Lubbock, Texas 806-747-8923  
Med Flight Air Amb – 2301 Yale Blvd SE #D3, Albuquerque, NM 505-842-4433  
S B Air Med Service – 2505 Clark Carr Loop SE, Albuquerque, NM 505-842-4949