

DISTRICT I
1625 N. French Dr., Hobbs, NM 88240
DISTRICT II
1301 W. Grand Avenue, Artesia, NM 88210

DISTRICT III
1000 Rio Brazos Rd., Aztec, NM 87410

DISTRICT IV
1220 S. St. Francis Dr., Santa Fe, NM 87505

State of New Mexico
Energy, Minerals and Natural Resources Department

Form C-102
Revised October 15, 2009

Submit one copy to appropriate
District Office

OIL CONSERVATION DIVISION
1220 South St. Francis Dr.
Santa Fe, New Mexico 87505

WELL LOCATION AND ACREAGE DEDICATION PLAT

☐ AMENDED REPORT

| | | |
|-----------------------------------|--|-----------------------------------|
| API Number 30-015-38229 | Pool Code 55670 1175 | Pool Name Cemetery Vaso |
| Property Code 38346 | Property Name LIMOUSINE "15EF" FEDERAL | Well Number 1H |
| OGRID No. 14744 | Operator Name MEWBOURNE OIL COMPANY | Elevation 3415' |

Surface Location

| UL or lot No. | Section | Township | Range | Lot Idn | Feet from the | North/South line | Feet from the | East/West line | County |
|---------------|-----------|-------------|-------------|---------|---------------|------------------|---------------|----------------|-------------|
| G | 15 | 20 S | 25 E | | 2290 | NORTH | 2275 | EAST | EDDY |

Bottom Hole Location If Different From Surface

| UL or lot No. | Section | Township | Range | Lot Idn | Feet from the | North/South line | Feet from the | East/West line | County |
|---------------|-----------|-------------|-------------|---------|---------------|------------------|---------------|----------------|-------------|
| E | 15 | 20 S | 25 E | | 2290 | North | 330 | West | Eddy |

| | | | |
|------------------------------|-----------------|--------------------|-----------|
| Dedicated Acres 80 | Joint or Infill | Consolidation Code | Order No. |
|------------------------------|-----------------|--------------------|-----------|

NO ALLOWABLE WILL BE ASSIGNED TO THIS COMPLETION UNTIL ALL INTERESTS HAVE BEEN CONSOLIDATED
OR A NON-STANDARD UNIT HAS BEEN APPROVED BY THE DIVISION

| | |
|--|--|
| | <p>OPERATOR CERTIFICATION</p> <p>I hereby certify that the information contained herein is true and complete to the best of my knowledge and belief, and that this organization either owns a working interest or unleased mineral interest in the land including the proposed bottom hole location or has a right to drill this well at this location pursuant to a contract with an owner of such a mineral or working interest, or to a voluntary pooling agreement or a compulsory pooling order heretofore entered by the division.</p> <p><i>Jackie Lathan</i> 7/8/10 Signature Date</p> <p>Jackie Lathan Printed Name</p> <p>SURVEYOR CERTIFICATION</p> <p>I hereby certify that the well location shown on this plat was plotted from field notes of actual surveys made by me or under my supervision and that the same is true and correct to the best of my belief.</p> <p>MARCH 10 2010 Date Surveyed</p> <p><i>[Signature]</i> Signature of Professional Surveyor</p> <p>7977 Professional Surveyor No.</p> <p>38229 A.C. No.</p> <p>Certificate No. Gary L. Jones 7977</p> <p>Basin Surveys</p> |
|--|--|

OCD Artesia

ATS-10-689
FORM APPROVED
OMB No. 1004-0136
Expires January 31, 2004

UNITED STATES
DEPARTMENT OF THE INTERIOR
BUREAU OF LAND MANAGEMENT

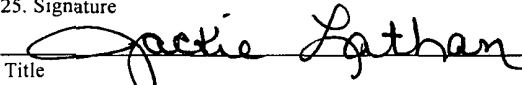
Split Estate

APPLICATION FOR PERMIT TO DRILL OR REENTER

| | | | |
|---|--|--|-----------------|
| 1a. Type of Work: <input checked="" type="checkbox"/> DRILL <input type="checkbox"/> REENTER | | 5. Lease Serial No. NMNM - 14758 | |
| 1b. Type of Well: <input checked="" type="checkbox"/> Oil Well <input type="checkbox"/> Gas Well <input type="checkbox"/> Other <input type="checkbox"/> Single Zone <input type="checkbox"/> Multiple Zone | | 6. If Indian, Allottee or Tribe Name | |
| 2. Name of Operator Mewbourne Oil Company (- 14744) | | 7. If Unit or CA Agreement, Name and No. | |
| 3a. Address PO Box 5270 Hobbs, NM 88241 | | 8. Lease Name and Well No. Limousine 15 FE Federal #1H (78346) | |
| 3b. Phone No. (include area code) 575-393-5905 | | 9. API Well No. 30-015-38229 | |
| 4. Location of Well (Report location clearly and in accordance with any State requirements. *) At surface 2290' FNL & 2275' FEL (Unit G) At proposed prod. zone 2290 FNL & 330 FWL Unit E | | 10. Field and Pool or Exploratory Seven Rvrs-Groffels Yeso (11795) | |
| 14. Distance in miles and direction from nearest town or post office* 16 Miles NW of Carlsbad, NM | | 11. Sec., T., R., M., or Blk. and Survey or Area Sec 15 - T20S - R25E | |
| 15. Distance from proposed* location to nearest property or lease line, ft. (Also to nearest drig. unit line, if any) 330' | | 12. County or Parish Eddy | 13. State NM |
| 16. No. of Acres in lease 1442 | 17. Spacing Unit dedicated to this well 80 | | |
| 18. Distance from proposed location* to nearest well, drilling, completed, applied for, on this lease, ft. 20' (Applied for) | 19. Proposed Depth 5000' 4660' per directional plan | 20. BLM/BIA Bond No. on file NM1693, Nationwide | |
| 21. Elevations (Show whether DF, KDB, RT, GL, etc.) 3415' GL | 22. Approximate date work will start* ASAP | 23. Estimated duration 15 | |
| 24. Attachments | | | |

The following, completed in accordance with the requirements of Onshore Oil and Gas Order No.1, shall be attached to this form:

- | | |
|---|--|
| 1. Well plat certified by a registered surveyor. | 4. Bond to cover the operations unless covered by an existing bond on file (see Item 20 above). |
| 2. A Drilling Plan. | 5. Operator certification. |
| 3. A Surface Use Plan (if the location is on National Forest System Lands, the SUPO shall be filed with the appropriate Forest Service Office). | 6. Such other site specific information and/or plans as may be required by the authorized officer. |

| | | |
|---|---------------------------------------|---------------------|
| 25. Signature  | Name (Printed/Typed) Jackie Lathan | Date 07/06/10 |
| Title Hobbs Regulatory | | |
| Approved by (Signature) /s/ Don Peterson | Name (Printed/Typed) | Date SEP 30 2010 |
| Title FIELD MANAGER | Office CARLSBAD FIELD OFFICE | |

Application approval does not warrant or certify that the applicant holds legal or equitable title to those rights in the subject lease which would entitle the applicant to conduct operations thereon.

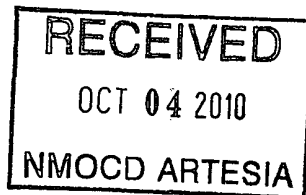
Conditions of approval, if any, are attached.

APPROVAL FOR TWO YEARS

Title 18 U.S.C. Section 1001 and Title 43 U.S.C. Section 1212, make it a crime for any person knowingly and willfully to make to any department or agency of the United States any false, fictitious or fraudulent statements or representations as to any matter within its jurisdiction.

*(Instructions on reverse)

Roswell Controlled Water Basin



Approval Subject to General Requirements
& Special Stipulations Attached

KP 10/15/10

SEE ATTACHED FOR
CONDITIONS OF APPROVAL

**United States Department of the Interior
Bureau of Land Management
Carlsbad Field Office
620 E Greene Street
Carlsbad, New Mexico 88201-1287**

Statement Accepting Responsibility for Operations

Operator Name: Mewbourne Oil Company
Street or Box: P.O. Box 5270
City, State: Hobbs, New Mexico
Zip Code: 88241

The undersigned accepts all applicable terms, conditions, stipulations, and restrictions concerning operations conducted of the leased land or portion thereof, as described below.

Lease Number: Lease Number NMNM-14758

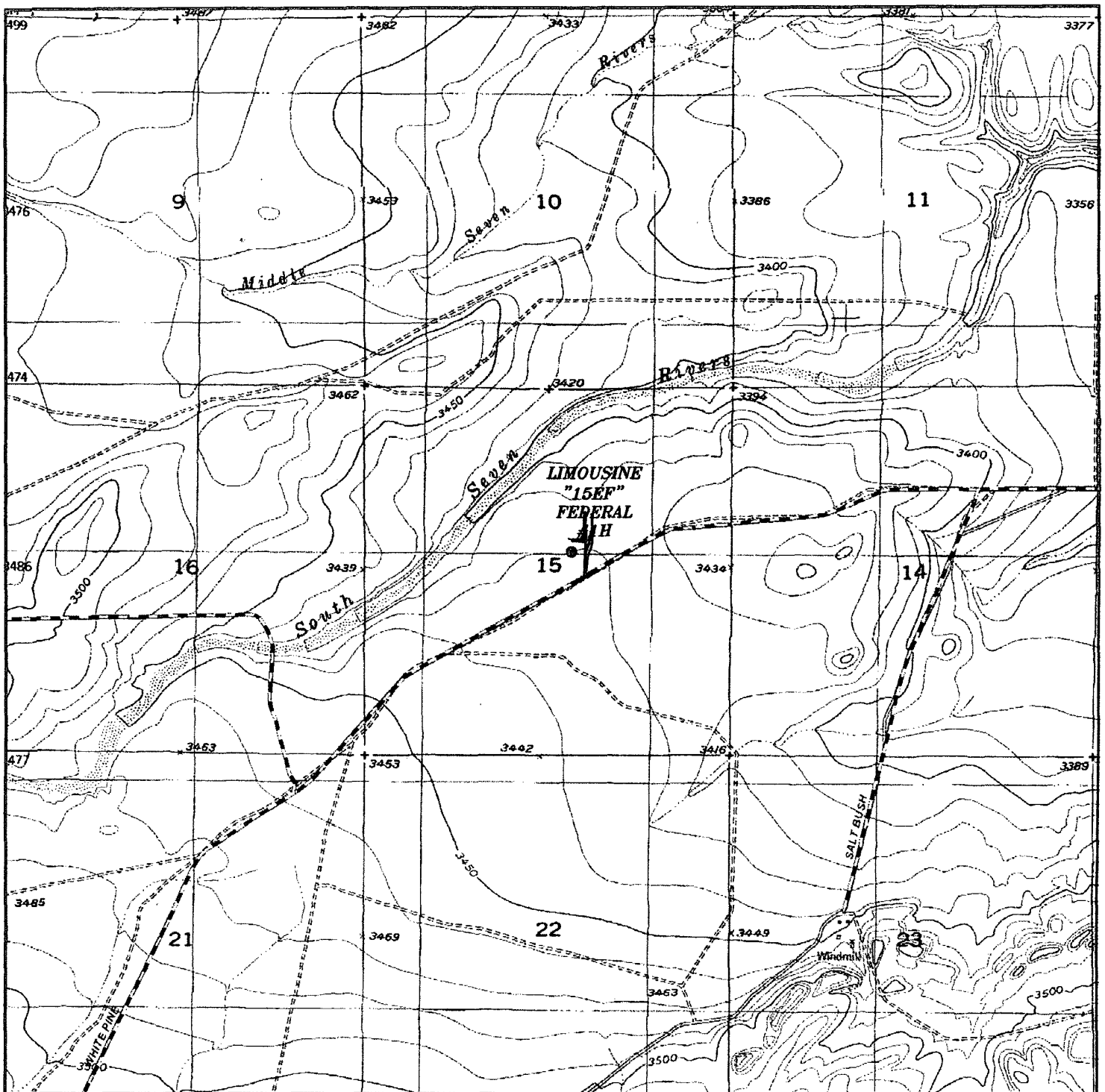
Legal Description of Land: Section 15, T-20S, R-25E Eddy County, New Mexico.
Location @ 2290' FNL & 2275' FEL.

Formation (if applicable): Yeso

Bond Coverage: \$150,000

BLM Bond File: NM1693, Nationwide

Authorized Signature: Jackie Lathan
Name: NM (Micky) Young
Title: District Manager
for Date: July 2, 2010



LIMOUSINE "15EF" FEDERAL #1H
 Located 2290' FNL and 2275' FEL
 Section 15, Township 20 South, Range 25 East,
 N.M.P.M., Eddy County, New Mexico.

Exhibit 3

Road —
 Gas —

basin
surveys
 focused on excellence
 in the oilfield

P.O. Box 1786
 1120 N. West County Rd.
 Hobbs, New Mexico 88241
 (575) 393-7316 - Office
 (575) 392-2206 - Fax
 basinsurveys.com

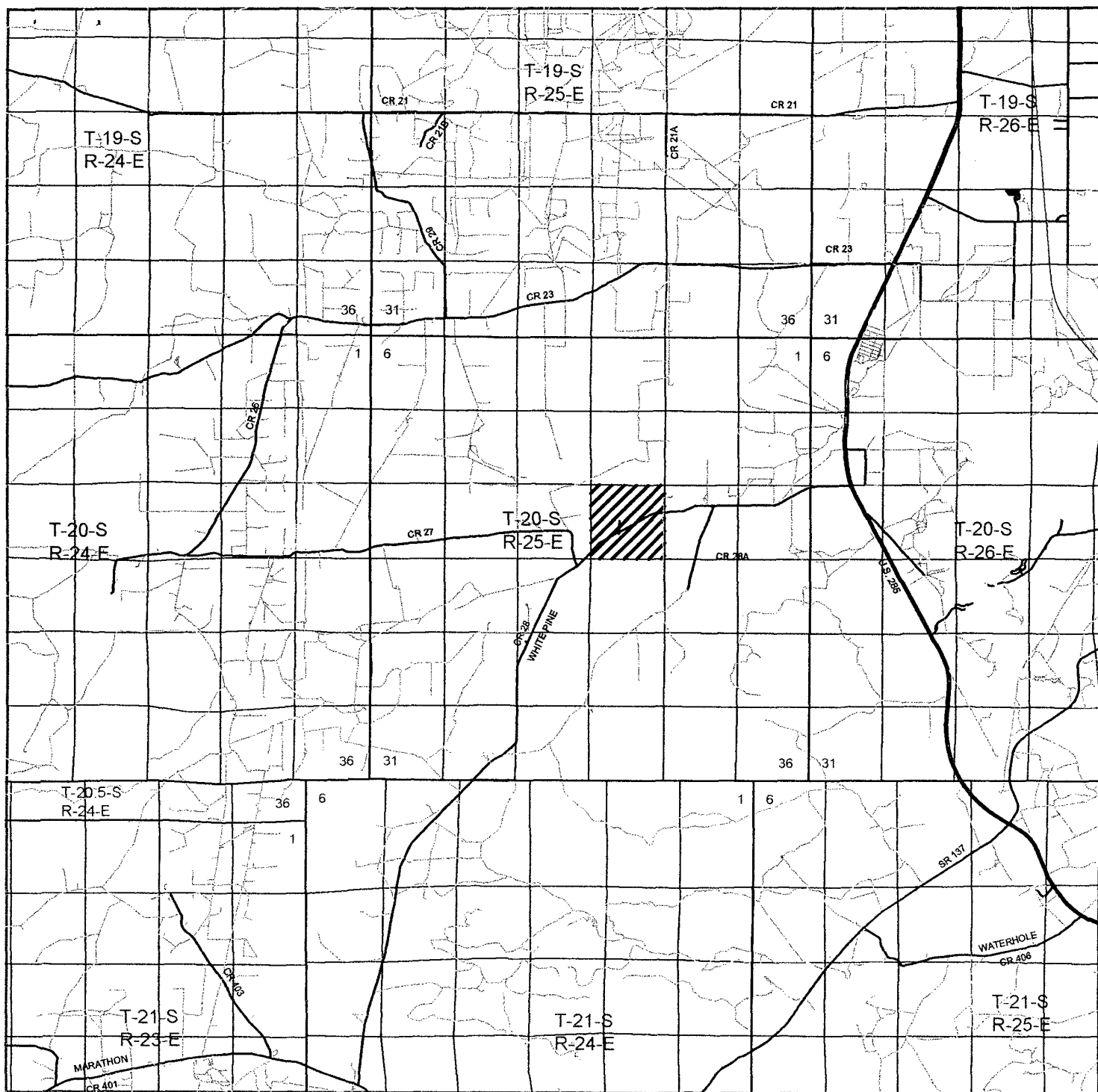
W.O. Number: JMS 22522

Survey Date: 03-17-2010

Scale: 1" = 2000'

Date: 03-24-2010

MEWBOURNE
OIL COMPANY



LIMOUSINE "15EF" FEDERAL #1H
 Located 2290' FNL and 2275' FEL
 Section 15, Township 20 South, Range 25 East,
 N.M.P.M., Eddy County, New Mexico.

Exhibit 3A

basin
surveys
 focused on excellence
 in the oilfield

P.O. Box 1786
 1120 N. West County Rd.
 Hobbs, New Mexico 88241
 (575) 393-7316 - Office
 (575) 392-2206 - Fax
 basinsurveys.com

W.O. Number: JMS 22522

Survey Date: 03-17-2010

Scale: 1" = 2 Miles

Date: 03-24-2010



MEWBOURNE
OIL COMPANY

SECTION 15, TOWNSHIP 20 SOUTH, RANGE 25 EAST, N.M.P.M.,
EDDY COUNTY, NEW MEXICO.

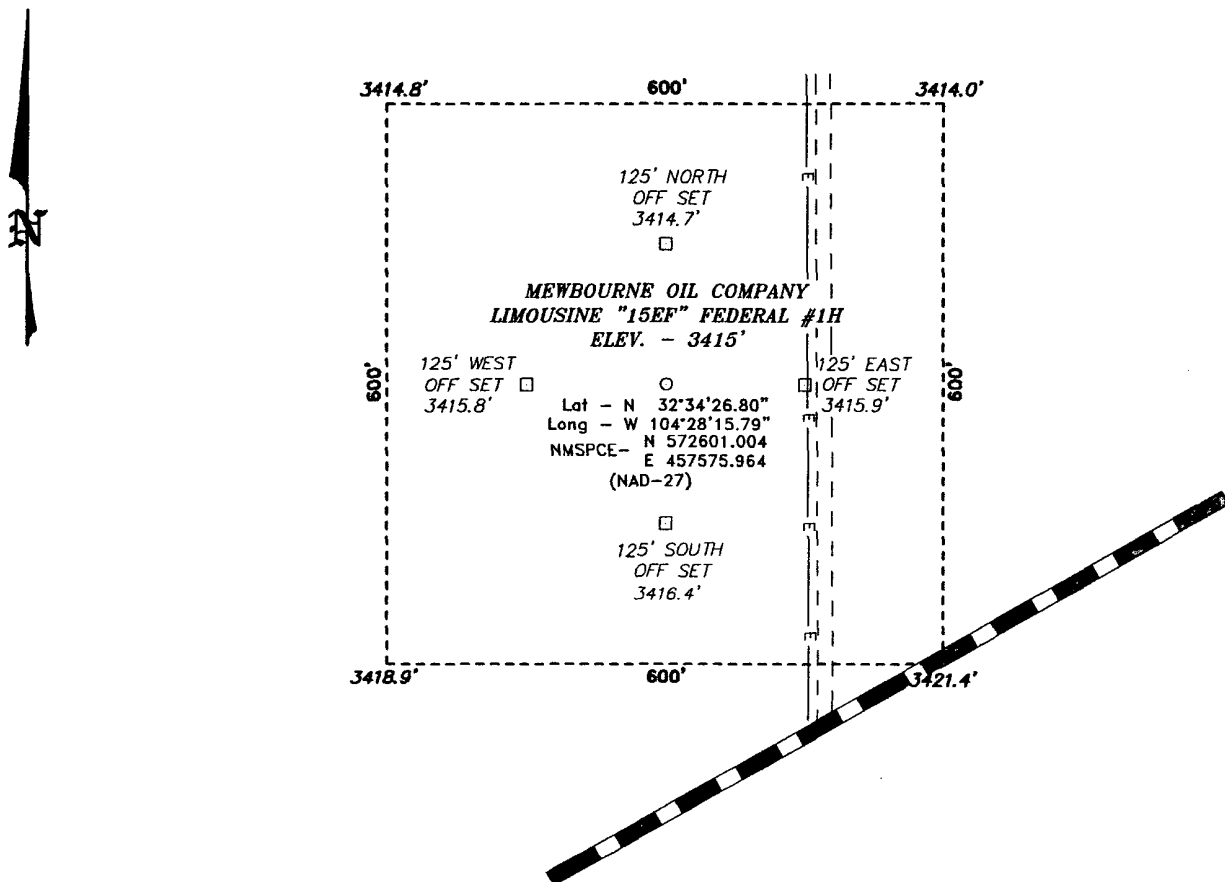
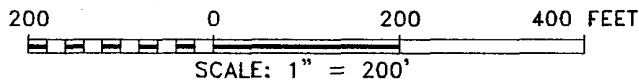


Exhibit 3B



Directions to Location:

FROM MILE MARKER 51 ON HWY 285, GO NORTH
250' TO WHITE PINE, GO WEST ON WHITE PINE FOR
3.0 MILES TO LEASE ROAD AND PROPOSED
LOCATION.

BASIN SURVEYS P.O. BOX 1786 -HOBBS, NEW MEXICO

W.O. Number: 22522 Drawn By: J. SMALL

Date: 03-24-2010 Disk: JMS 22522

MEWBOURNE OIL COMPANY

REF: LIMOUSINE "15EF" FEDERAL #1H / WELL PAD TOPO

THE LIMOUSINE "15EF" FEDERAL #1H LOCATED 2290'

FROM THE NORTH LINE AND 2275' FROM THE EAST LINE OF

SECTION 15, TOWNSHIP 20 SOUTH, RANGE 25 EAST,

N.M.P.M., EDDY COUNTY, NEW MEXICO.

Survey Date: 03-17-2010

Sheet 1 of 1 Sheets

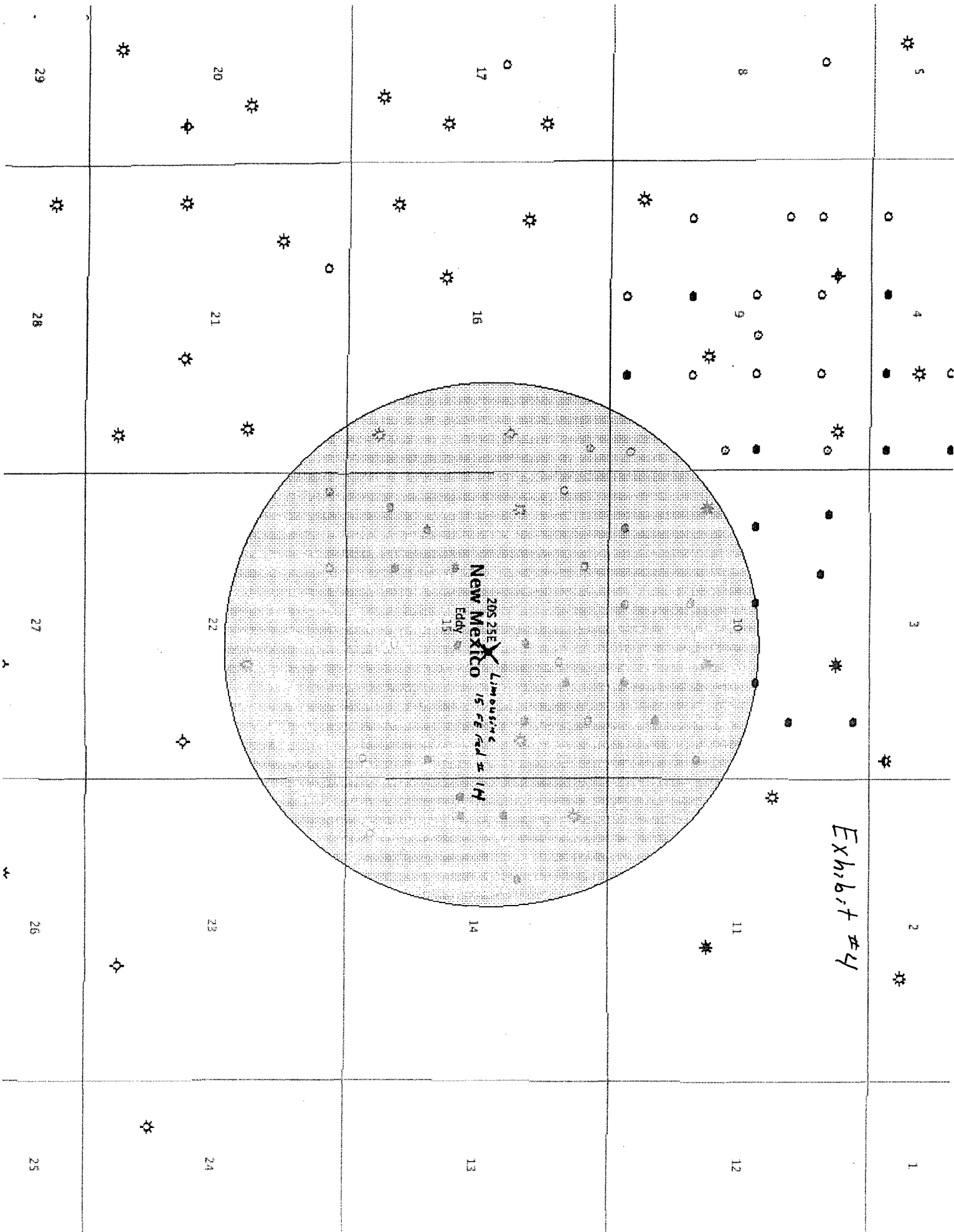


Exhibit #4

Drilling Program
Mewbourne Oil Company
Limousine 15 FE Federal #1H
2290' FNL & 2275' FEL (SHL)
Sec 15-T20S-R25E
Eddy County, New Mexico

1. The estimated tops of geological markers are as follows:

| | |
|------------|-------|
| San Andres | 925' |
| *Glorietta | 2410' |
| *Yeso | 2545' |

2. Estimated depths of anticipated fresh water, oil, or gas:

| | |
|--------------|--|
| Water | Below 100'. |
| Hydrocarbons | Oil and gas are anticipated in the above (*) formations. These zones will be protected by casing as necessary. |

3. Pressure control equipment:

A 2000# WP annular BOP will be installed after running 9 5/8" casing. Pressure tests will be conducted and BOPE will remain in use until completion of drilling operations. The BOP will be inspected and operated daily to ensure mechanical integrity and the inspection will be recorded on the daily drilling report.
Will test the BOPE to 1500# with a third party testing company before drilling below shoe as per BLM Onshore Oil and Gas Order #2.

4. MOC proposes to drill a vertical wellbore to 1960' & kick off to horizontal @ 2533' TVD. The well will be drilled to 5000 MD (2507' TVD). See attached directional plan.

5. Proposed casing and cementing program:

A. Casing Program:

| <u>Hole Size</u> | <u>Casing</u> | <u>Wt/Ft.</u> | <u>Grade</u> | <u>Depth</u> | <u>Jt Type</u> |
|------------------|---------------|---------------|--------------|-------------------------------|----------------|
| 12 1/4" | 9 5/8" (new) | 36# | J55 | 0'-950' | LT&C |
| 8 3/4" | 5 1/2" (new) | 17# | J55 | 0-2900' | LT&C |
| 7 7/8" | 4 1/2" (new) | 11.6# | J55 | 2900'- ^{4660'} 5000' | MD LT&C |

Minimum casing design factors: Collapse 1.125, Burst 1.0, Tensile strength 1.8.

~~*Subject to availability of casing.~~

See
COA

B. Cementing Program:

- i. Surface Casing: 350 sacks class "C" w/2% CaCl₂. Yield at 1.34 cuft/sk. Cmt circulated to surface.
- ii. Production Casing: Lateral hole will utilize a packer/port system of isolation. An ECP will be placed to isolate the Glorietta from the San Andres. A FO cement tool will be placed immediately above the KOP and cemented w/215 sacks light class "C" w/additives. Yield at 2.45 cuft/sk. And 100 sacks class "C". Yield at 1.32 cuft/sk. Cmt calculated to circulate from FO cementer to surface.

See COA

~~*Mewbourne Oil Company reserves the right to change cement designs as hole conditions may warrant.*~~

6. Mud Program:

| <u>Interval</u> | <u>Type System</u> | <u>Weight</u> | <u>Viscosity</u> | <u>Fluid Loss</u> |
|-----------------|--------------------|---------------|------------------|-------------------|
| 0'-950' | FW spud mud | 8.6-9.0 | 32-34 | NA |
| 950'-2000' | Fresh water | 8.4-8.6 | 28-30 | NA |
| 2000'- TD | FW w/Polymer | 8.5-8.7 | 32-35 | 20 |

7. Evaluation Program:

See COA
Samples: 10' samples from surface casing to TD
Logging: GR from 2000' to TD.

8. Downhole Conditions

| | |
|----------------------------------|---|
| Zones of abnormal pressure: | None anticipated |
| Zones of lost circulation: | Anticipated in surface and intermediate holes |
| Maximum bottom hole temperature: | 100 degree F |
| Maximum bottom hole pressure: | 8.4 lbs/gal gradient or less |

9. Anticipated Starting Date:

Mewbourne Oil Company intends to drill this well as soon as possible after receiving approval with approximately 15 days involved in drilling operations and an additional 10 days involved in completion operations on the project.

Mewbourne Oil Company

Limousine "15" FE Fed #1H

2290' FNL & 2275' FEL

Sec 15, T20S, R25E

Eddy Co., NM

Supplemental procedure to Drilling Plan Sec 5.B.ii:

Option (1): Plans are to run a packer/port completion system in the lateral production hole. A FO Cementer will be placed at KOP. After casing has been run and the hole is circulated clean, the isolation packers will be set. Drilling rig will set casing slips, ND drilling equipment, NU wellhead, NU completion BOPE/frac valve, RD&MO drilling rig. BOPE will be tested to 1000#. Gauges will be installed and checked daily on the 9 $\frac{5}{8}$ " x 5 $\frac{1}{2}$ " annulus and on the 5 $\frac{1}{2}$ " casing. A pressure relief valve will release excess pressure into a frac tank. A completion rig will MI&RU as soon as possible. Run tubing with cementer opening tool, and circulate cement to surface. Then normal completion operations will begin.

Option (2): If hole conditions do not allow option one to be put into place, the drilling rig will run tubing with opening tool, cement casing to surface, and normal operations will continue.



Mewbourne Oil Company

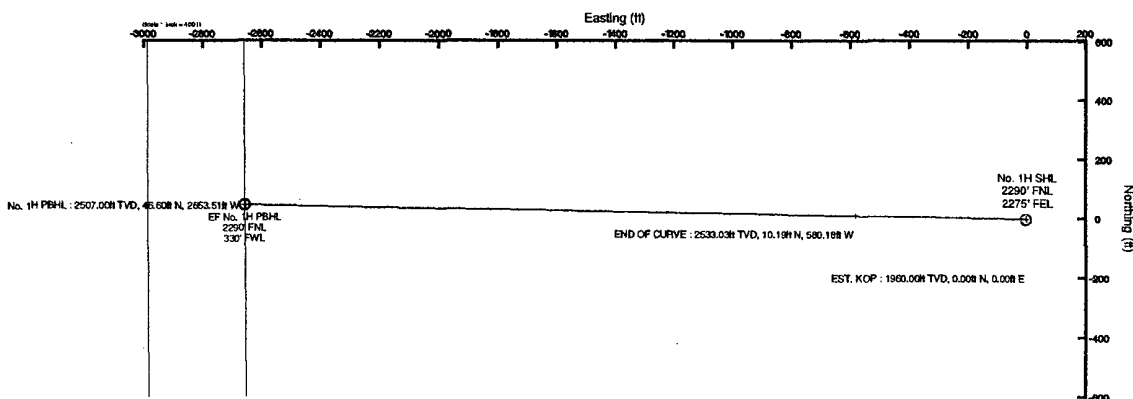
Mewbourne Oil Company

Location: Eddy County, NM
Field: (Limousine) Sec 15, T20S, R25E
Facility: Limousine 15 EF Fed No. 1H

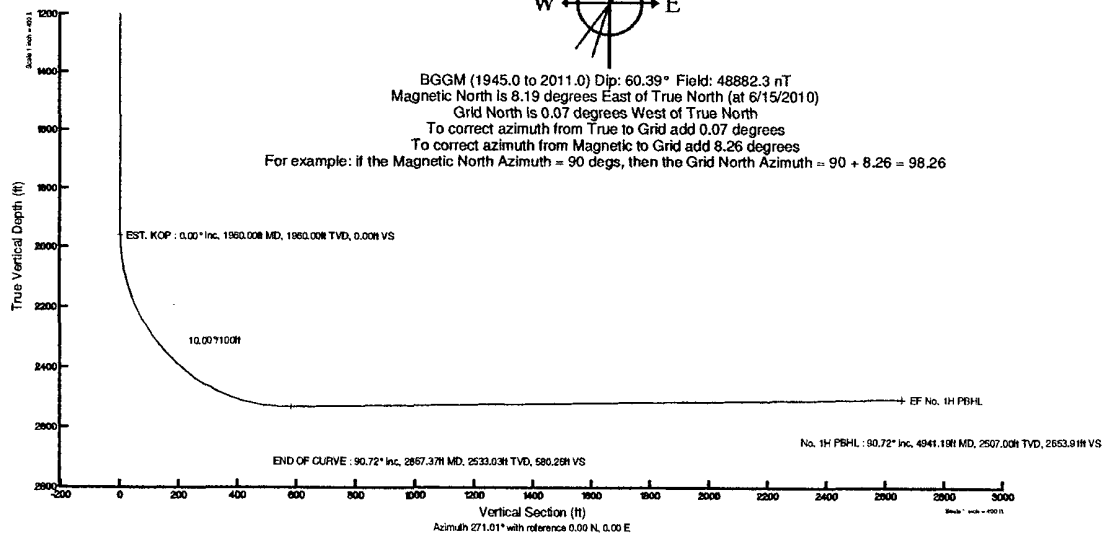
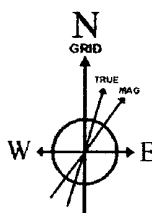
Slot: No. 1H SHL
Well: No. 1H
Wellbore: No. 1H PWB



| Well Profile Data | | | | | | | | |
|-------------------|---------|---------|---------|----------|--------------|--------------|--------------|---------|
| Design Comment | MD (ft) | Inc (°) | Az (°) | TVD (ft) | Local N (ft) | Local E (ft) | DLS (*100ft) | VS (ft) |
| Tie On | 0.00 | 0.000 | 271.006 | 0.00 | 0.00 | 0.00 | 0.00 | 0.00 |
| EST. KOP | 1960.00 | 0.000 | 271.006 | 1960.00 | 0.00 | 0.00 | 0.00 | 0.00 |
| END OF CURVE | 2867.37 | 90.719 | 271.006 | 2533.03 | 10.19 | -580.18 | 10.00 | 580.26 |
| No. 1H PBHL | 4941.19 | 90.719 | 271.006 | 2507.00 | 46.60 | -2653.51 | 0.00 | 2653.91 |



| | |
|---|---|
| Plot reference wellpath is Prelim_1 | |
| True vertical depths are referenced to Rig 63 on No. 1H SHL (KB) | Grid System: NAD27 / TM New Mexico State Planes, Eastern Zone (3001), US feet |
| Measured depths are referenced to Rig 63 on No. 1H SHL (KB) | North Reference: Grid north |
| Rig 63 on No. 1H SHL (KB) to Mean Sea Level: 3429 feet | Scale: True distance |
| Mean Sea Level to Mud line (Facility: Limousine 15 EF Fed No. 1H): -3415 feet | Depths are in feet |
| Coordinates are in feet referenced to Slot | Created by: Victor Hernandez on 6/15/2010 |



Planned Wellpath Report

Prelim_1

Page 1 of 3



REFERENCE WELLPATH IDENTIFICATION

| | | | |
|----------|--------------------------------|----------|------------|
| Operator | Mewbourne Oil Company | Slot | No. 1H SHL |
| Area | Eddy County, NM | Well | No. 1H |
| Field | (Limousine) Sec 15, T20S, R25E | Wellbore | No. 1H PWB |
| Facility | Limousine 15 EF Fed No. 1H | | |

REPORT SETUP INFORMATION

| | | | |
|---------------------|--|----------------------|---------------------------|
| Projection System | NAD27 / TM New Mexico State Planes, Eastern Zone (3001), US feet | Software System | WellArchitect® 2.0 |
| North Reference | Grid | User | Victor Hernandez |
| Scale | 0.999911 | Report Generated | 6/15/2010 at 2:12:52 PM |
| Convergence at slot | 0.07° West | Database/Source file | WA_Midland/No. 1H_PWB.xml |

WELLPATH LOCATION

| | Local coordinates | | Grid coordinates | | Geographic coordinates | |
|-----------------------|-------------------|----------|------------------|----------------|------------------------|-----------------|
| | North[ft] | East[ft] | Easting[USft] | Northing[USft] | Latitude | Longitude |
| Slot Location | 0.00 | 0.00 | 457575.96 | 572601.00 | 32°34'26.801"N | 104°28'15.788"W |
| Facility Reference Pt | | | 457575.96 | 572601.00 | 32°34'26.801"N | 104°28'15.788"W |
| Field Reference Pt | | | 457834.80 | 573900.26 | 32°34'39.661"N | 104°28'12.783"W |

WELLPATH DATUM

| | | | |
|--------------------------|---------------------------|---|-------------------|
| Calculation method | Minimum curvature | Rig 63 on No. 1H SHL (KB) to SL | 14.00ft |
| Horizontal Reference Pt | Slot | Rig 63 on No. 1H SHL (KB) to Mean Sea Level | 3429.00ft |
| Vertical Reference Pt | Rig 63 on No. 1H SHL (KB) | SL to Mud Line (Facility) | 0.00ft |
| MD Reference Pt | Rig 63 on No. 1H SHL (KB) | Section Origin | N 0.00, E 0.00 ft |
| Field Vertical Reference | Mean Sea Level | Section Azimuth | 271.01° |

Planned Wellpath Report

Prelim_1

Page 2 of 3



REFERENCE WELLPATH IDENTIFICATION

| | | | |
|----------|--------------------------------|----------|------------|
| Operator | Mewbourne Oil Company | Slot | No. 1H SHL |
| Area | Eddy County, NM | Well | No. 1H |
| Field | (Limousine) Sec 15, T20S, R25E | Wellbore | No. 1H PWB |
| Facility | Limousine 15 EF Fed No. 1H | | |

WELLPATH DATA (33 stations) † = interpolated/extrapolated station

| MD [ft] | Inclination [°] | Azimuth [°] | TVD [ft] | Vert Sect [ft] | North [ft] | East [ft] | Grid East [srv ft] | Grid North [srv ft] | Latitude | Longitude | DLS [°/100ft] | Comments |
|------------|--------------------|----------------|-------------|-------------------|---------------|--------------|-----------------------|------------------------|----------------|-----------------|------------------|--------------|
| 0.00 | 0.000 | 271.006 | 0.00 | 0.00 | 0.00 | 0.00 | 457575.96 | 572601.00 | 32°34'26.801"N | 104°28'15.788"W | 0.00 | Tie On |
| 1960.00 | 0.000 | 271.006 | 1960.00 | 0.00 | 0.00 | 0.00 | 457575.96 | 572601.00 | 32°34'26.801"N | 104°28'15.788"W | 0.00 | EST. KOP |
| 2060.00† | 9.998 | 271.006 | 2059.49 | 8.70 | 0.15 | -8.70 | 457567.26 | 572601.16 | 32°34'26.802"N | 104°28'15.890"W | 10.00 | |
| 2160.00† | 19.996 | 271.006 | 2155.96 | 34.55 | 0.61 | -34.54 | 457541.43 | 572601.61 | 32°34'26.806"N | 104°28'16.192"W | 10.00 | |
| 2260.00† | 29.994 | 271.006 | 2246.48 | 76.75 | 1.35 | -76.74 | 457499.24 | 572602.35 | 32°34'26.813"N | 104°28'16.685"W | 10.00 | |
| 2360.00† | 39.992 | 271.006 | 2328.30 | 134.02 | 2.35 | -134.00 | 457441.97 | 572603.36 | 32°34'26.822"N | 104°28'17.354"W | 10.00 | |
| 2460.00† | 49.990 | 271.006 | 2398.93 | 204.63 | 3.59 | -204.60 | 457371.38 | 572604.60 | 32°34'26.834"N | 104°28'18.179"W | 10.00 | |
| 2560.00† | 59.988 | 271.006 | 2456.24 | 286.43 | 5.03 | -286.39 | 457289.60 | 572606.03 | 32°34'26.847"N | 104°28'19.135"W | 10.00 | |
| 2660.00† | 69.986 | 271.006 | 2498.46 | 376.94 | 6.62 | -376.88 | 457199.12 | 572607.62 | 32°34'26.862"N | 104°28'20.193"W | 10.00 | |
| 2760.00† | 79.984 | 271.006 | 2524.34 | 473.40 | 8.31 | -473.33 | 457102.68 | 572609.32 | 32°34'26.877"N | 104°28'21.320"W | 10.00 | |
| 2860.00† | 89.982 | 271.006 | 2533.07 | 572.89 | 10.06 | -572.80 | 457003.21 | 572611.06 | 32°34'26.893"N | 104°28'22.482"W | 10.00 | |
| 2867.37 | 90.719 | 271.006 | 2533.03 | 580.26 | 10.19 | -580.18 | 456995.84 | 572611.19 | 32°34'26.894"N | 104°28'22.568"W | 10.00 | END OF CURVE |
| 2960.00† | 90.719 | 271.006 | 2531.86 | 672.88 | 11.82 | -672.78 | 456903.24 | 572612.82 | 32°34'26.909"N | 104°28'23.650"W | 0.00 | |
| 3060.00† | 90.719 | 271.006 | 2530.61 | 772.88 | 13.57 | -772.76 | 456803.28 | 572614.57 | 32°34'26.925"N | 104°28'24.819"W | 0.00 | |
| 3160.00† | 90.719 | 271.006 | 2529.35 | 872.87 | 15.33 | -872.73 | 456703.31 | 572616.33 | 32°34'26.941"N | 104°28'25.987"W | 0.00 | |
| 3260.00† | 90.719 | 271.006 | 2528.10 | 972.86 | 17.08 | -972.71 | 456603.34 | 572618.08 | 32°34'26.957"N | 104°28'27.155"W | 0.00 | |
| 3360.00† | 90.719 | 271.006 | 2526.84 | 1072.85 | 18.84 | -1072.69 | 456503.37 | 572619.84 | 32°34'26.973"N | 104°28'28.324"W | 0.00 | |
| 3460.00† | 90.719 | 271.006 | 2525.59 | 1172.85 | 20.59 | -1172.66 | 456403.41 | 572621.60 | 32°34'26.989"N | 104°28'29.492"W | 0.00 | |
| 3560.00† | 90.719 | 271.006 | 2524.33 | 1272.84 | 22.35 | -1272.64 | 456303.44 | 572623.35 | 32°34'27.006"N | 104°28'30.660"W | 0.00 | |
| 3660.00† | 90.719 | 271.006 | 2523.08 | 1372.83 | 24.11 | -1372.62 | 456203.47 | 572625.11 | 32°34'27.022"N | 104°28'31.828"W | 0.00 | |
| 3760.00† | 90.719 | 271.006 | 2521.82 | 1472.82 | 25.86 | -1472.59 | 456103.50 | 572626.86 | 32°34'27.038"N | 104°28'32.997"W | 0.00 | |
| 3860.00† | 90.719 | 271.006 | 2520.57 | 1572.81 | 27.62 | -1572.57 | 456003.54 | 572628.62 | 32°34'27.054"N | 104°28'34.165"W | 0.00 | |
| 3960.00† | 90.719 | 271.006 | 2519.31 | 1672.81 | 29.37 | -1672.55 | 455903.57 | 572630.37 | 32°34'27.070"N | 104°28'35.333"W | 0.00 | |
| 4060.00† | 90.719 | 271.006 | 2518.06 | 1772.80 | 31.13 | -1772.52 | 455803.60 | 572632.13 | 32°34'27.086"N | 104°28'36.502"W | 0.00 | |
| 4160.00† | 90.719 | 271.006 | 2516.80 | 1872.79 | 32.88 | -1872.50 | 455703.63 | 572633.89 | 32°34'27.102"N | 104°28'37.670"W | 0.00 | |
| 4260.00† | 90.719 | 271.006 | 2515.55 | 1972.78 | 34.64 | -1972.48 | 455603.66 | 572635.64 | 32°34'27.118"N | 104°28'38.838"W | 0.00 | |
| 4360.00† | 90.719 | 271.006 | 2514.29 | 2072.77 | 36.40 | -2072.46 | 455503.70 | 572637.40 | 32°34'27.134"N | 104°28'40.007"W | 0.00 | |
| 4460.00† | 90.719 | 271.006 | 2513.04 | 2172.77 | 38.15 | -2172.43 | 455403.73 | 572639.15 | 32°34'27.150"N | 104°28'41.175"W | 0.00 | |
| 4560.00† | 90.719 | 271.006 | 2511.78 | 2272.76 | 39.91 | -2272.41 | 455303.76 | 572640.91 | 32°34'27.166"N | 104°28'42.343"W | 0.00 | |
| 4660.00† | 90.719 | 271.006 | 2510.53 | 2372.75 | 41.66 | -2372.39 | 455203.79 | 572642.66 | 32°34'27.182"N | 104°28'43.511"W | 0.00 | |

Planned Wellpath Report

Prelim_1
Page 3 of 3

REFERENCE WELLPATH IDENTIFICATION

| | | | |
|----------|--------------------------------|----------|------------|
| Operator | Mewbourne Oil Company | Slot | No. 1H SHL |
| Area | Eddy County, NM | Well | No. 1H |
| Field | (Limousine) Sec 15, T20S, R25E | Wellbore | No. 1H PWB |
| Facility | Limousine 15 EF Fed No. 1H | | |

WELLPATH DATA (33 stations) † = interpolated/extrapolated station

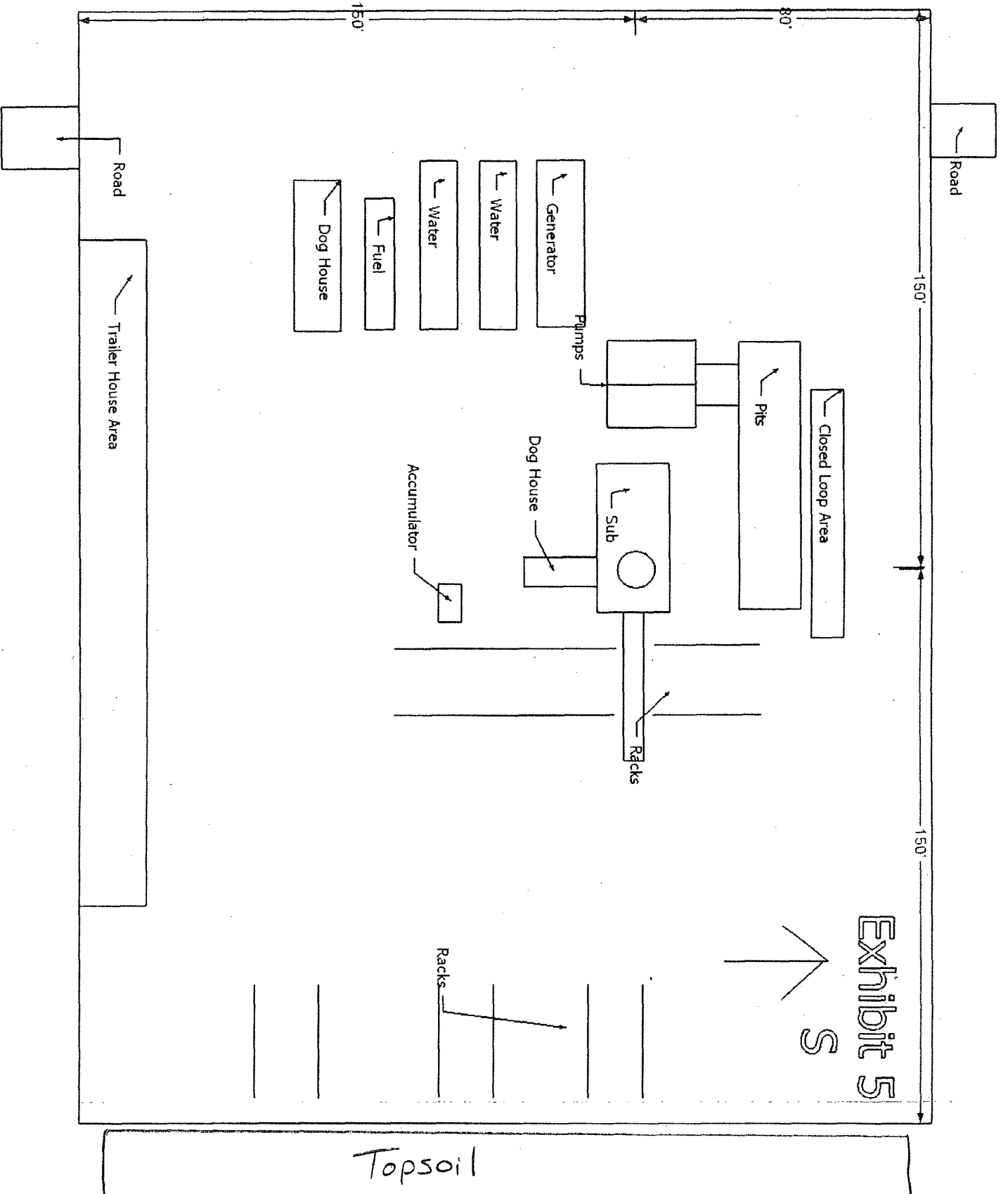
| MD [ft] | Inclination [°] | Azimuth [°] | TVD [ft] | Vert Sect [ft] | North [ft] | East [ft] | Grid East [srv ft] | Grid North [srv ft] | Latitude | Longitude | DLS [°/100ft] | Comments |
|------------|--------------------|----------------|-------------|-------------------|---------------|--------------|-----------------------|------------------------|----------------|-----------------|------------------|-------------|
| 4760.00† | 90.719 | 271.006 | 2509.27 | 2472.74 | 43.42 | -2472.36 | 455103.83 | 572644.42 | 32°34'27.198"N | 104°28'44.680"W | 0.00 | |
| 4860.00† | 90.719 | 271.006 | 2508.02 | 2572.74 | 45.17 | -2572.34 | 455003.86 | 572646.17 | 32°34'27.214"N | 104°28'45.848"W | 0.00 | |
| 4941.19 | 90.719 | 271.006 | 2507.00† | 2653.91 | 46.60 | -2653.51 | 454922.70 | 572647.60 | 32°34'27.227"N | 104°28'46.797"W | 0.00 | No. 1H PBHL |

TARGETS

| Name | MD [ft] | TVD [ft] | North [ft] | East [ft] | Grid East [srv ft] | Grid North [srv ft] | Latitude | Longitude | Shape |
|-------------------|------------|-------------|---------------|--------------|-----------------------|------------------------|----------------|-----------------|-------|
| 1) EF No. 1H PBHL | 4941.19 | 2507.00 | 46.60 | -2653.51 | 454922.70 | 572647.60 | 32°34'27.227"N | 104°28'46.797"W | point |

SURVEY PROGRAM Ref Wellbore: No. 1H PWB Ref Wellpath: Prelim_1

| Start MD [ft] | End MD [ft] | Positional Uncertainty Model | Log Name/Comment | Wellbore |
|------------------|----------------|------------------------------|------------------|------------|
| 14.00 | 4941.19 | NaviTrak (Standard) | | No. 1H PWB |



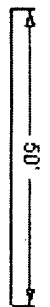
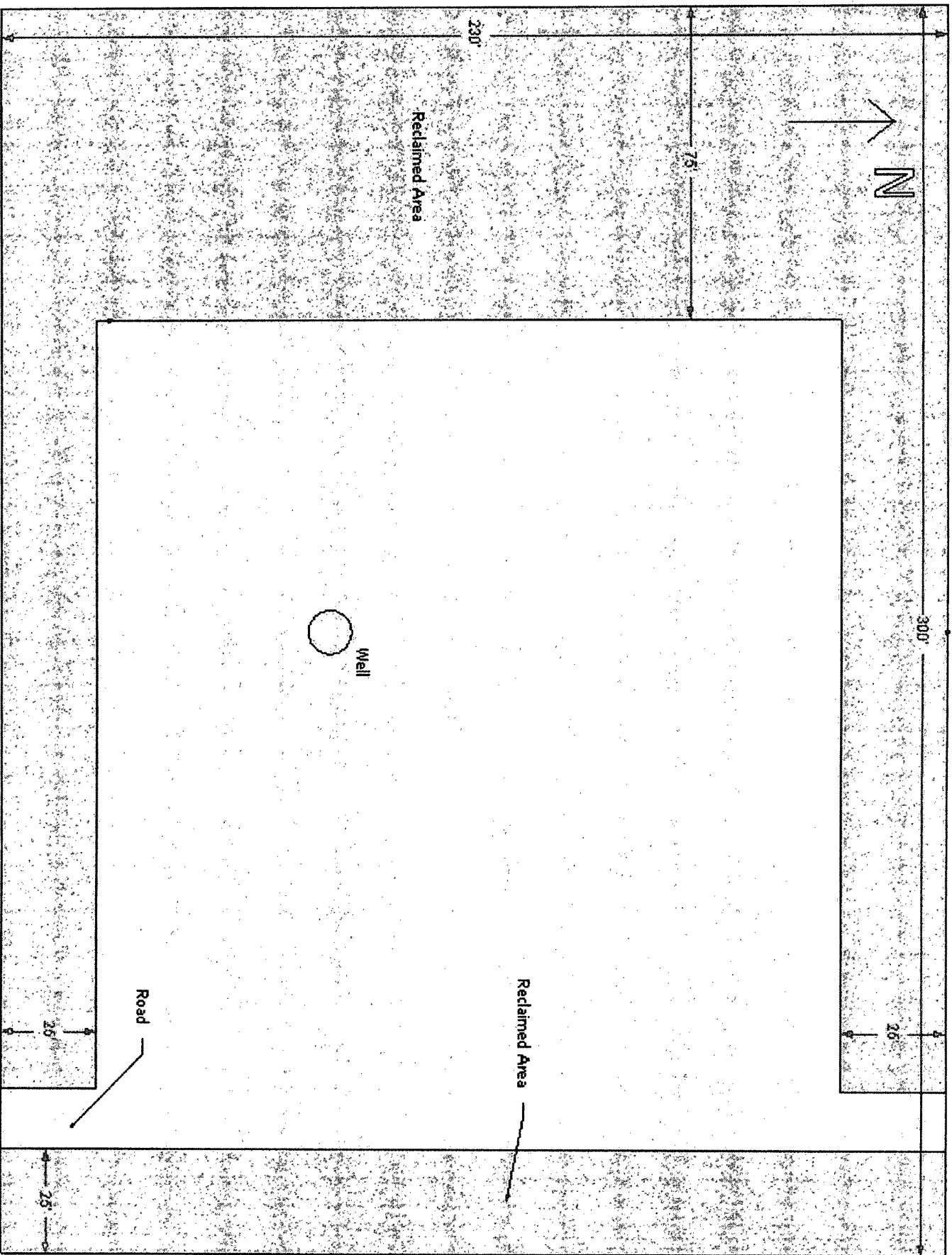


Exhibit 6



Mewbourne Oil Company
Limousine 15 FE Federal #1H
2290' FNL & 2275' FEL
Sec 15, T20S, R25E
Eddy Co., NM

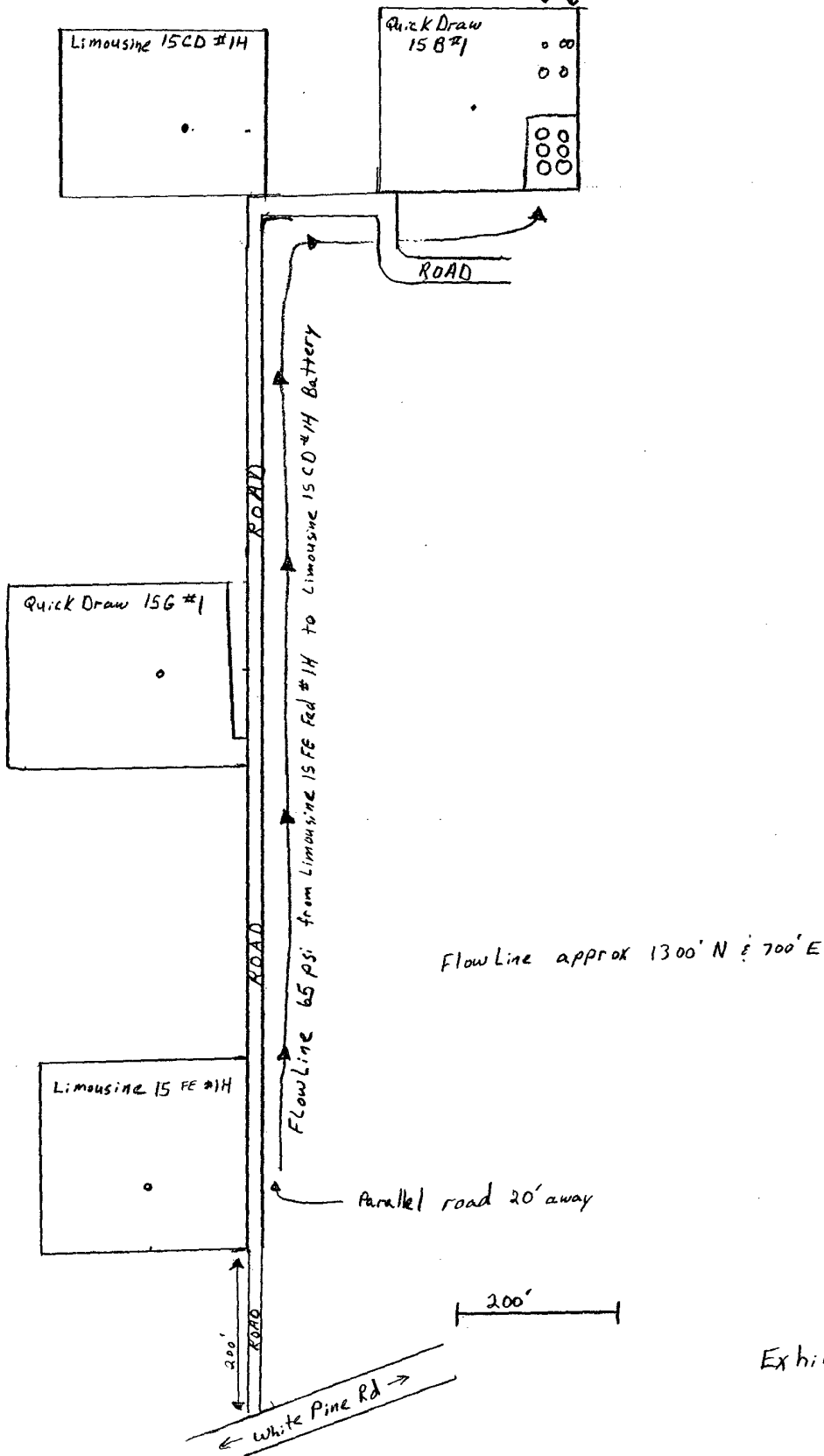


Exhibit 5A

Notes Regarding Blowout Preventer

Mewbourne Oil Company

Limousine "15" FE Federal Com #1H

2290' FNL & 2275' FEL (SHL)

Sec 15-T20S-R25E

Eddy County, New Mexico

- I. Drilling nipple (bell nipple) to be constructed so that it can be removed without the use of a welder through the opening of the rotary table, with minimum internal diameter equal to blowout preventer bore.
- II. Blowout preventer and all fittings must be in good condition with a minimum 2000 psi working pressure on 9 5/8" casing.
- III. Safety valve must be available on the rig floor at all times with proper connections to install in the drill string. Valve must be full bore with minimum 2000 psi working pressure.
- IV. Equipment through which bit must pass shall be at least as large as internal diameter of the casing.
- V. A kelly cock shall be installed on the kelly at all times.

Blowout preventer closing equipment to include and accumulator of at least 40 gallon capacity, two independent sources of pressure on closing unit, and meet all other API specifications.

Mewbourne Oil Company
BOP Schematic for
7 7/8" Hole

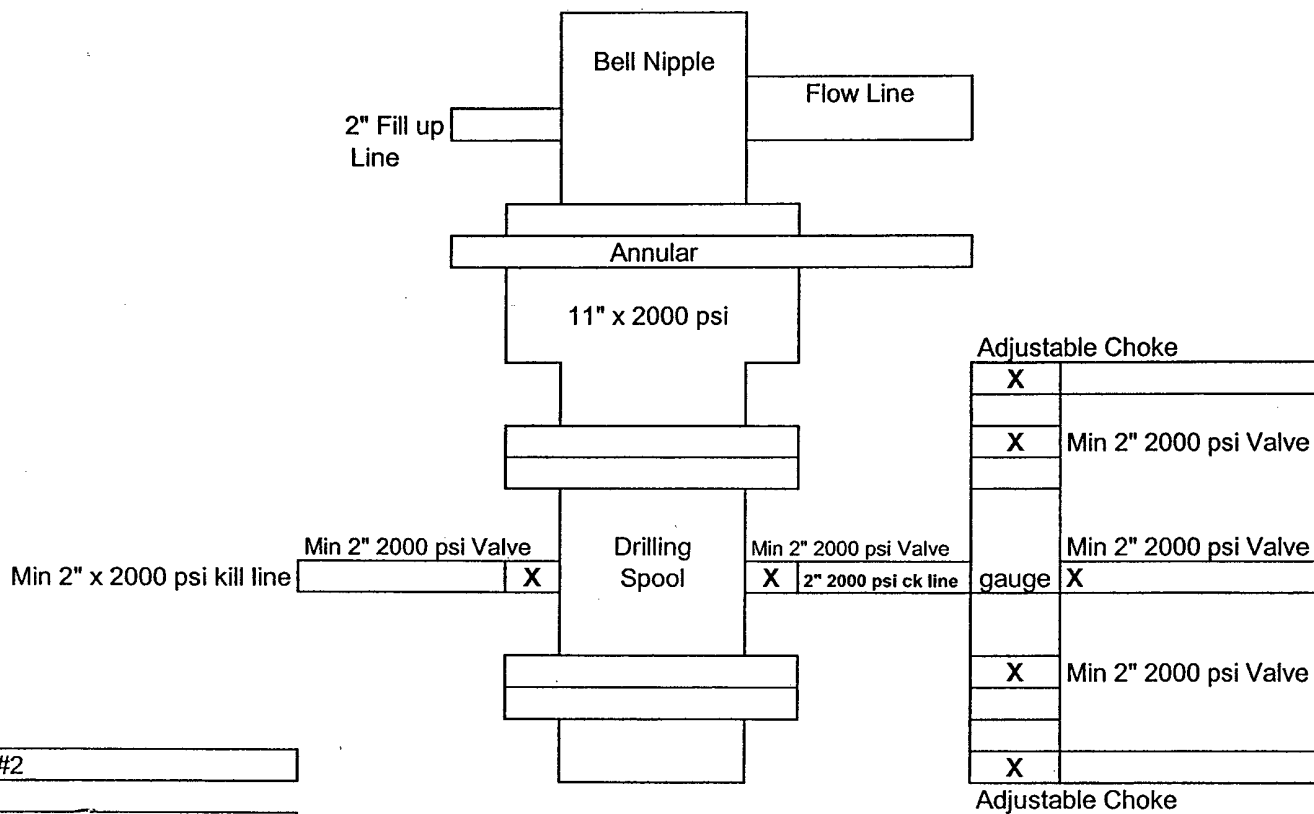
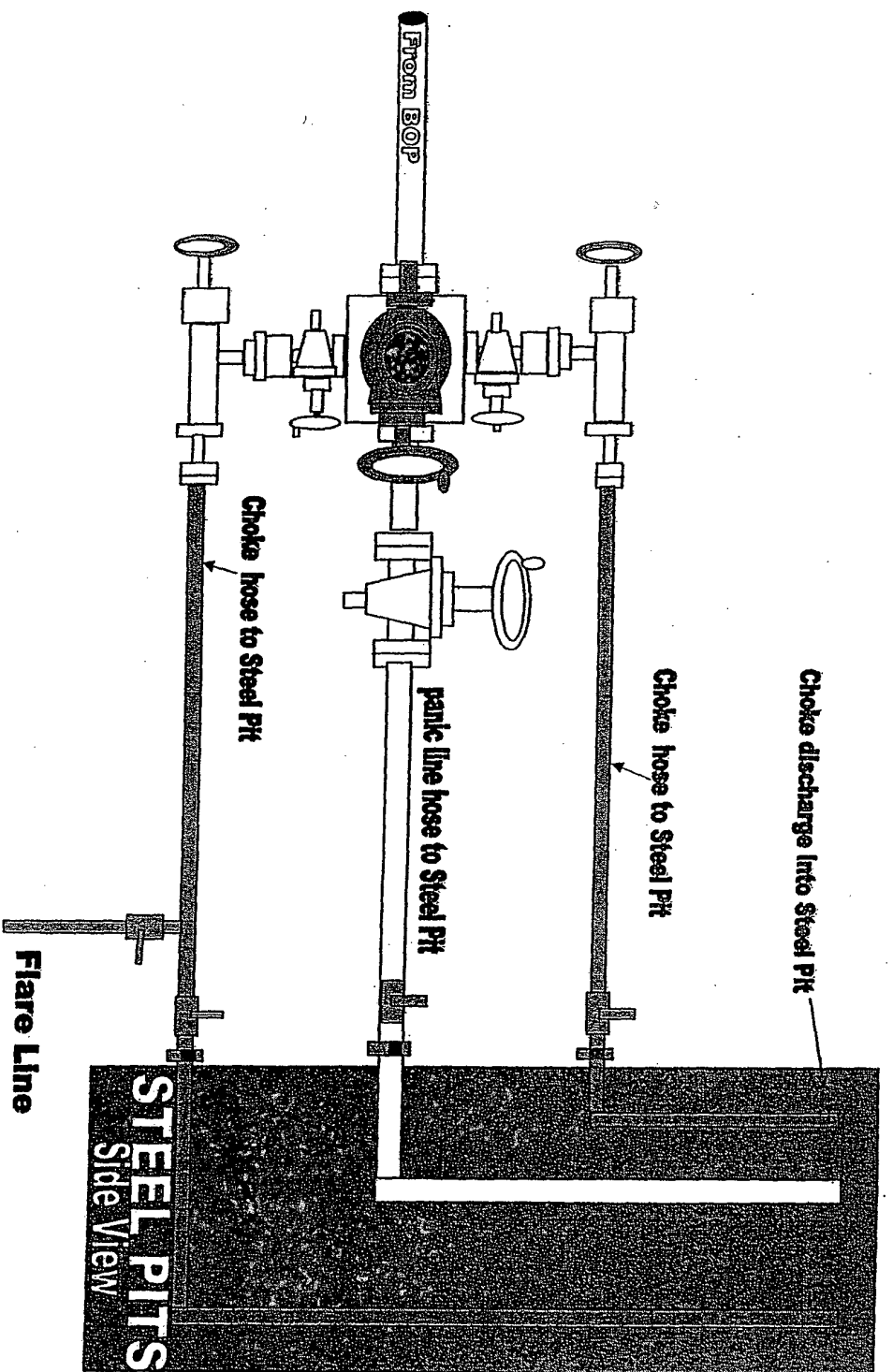


Exhibit #2

Limousine 15 Federal #1H
1190' FNL & 1175' FEL
Sec 15-T20S-R25E
Eddy, County
New Mexico



2000#/3000# BOP manifold system

For Exhibit 2

Hydrogen Sulfide Drilling Operations Plan

Mewbourne Oil Company

Limousine 15 FE Federal #1H

2290' FNL & 2275' FEL

Sec 15-T20S-R25E

Eddy County, New Mexico

1. General Requirements

Rule 118 does not apply to this well because MOC has researched this area and no high concentrations of H₂S were found. MOC will have on location and working all H₂S safety equipment before the Yates formation for purposes of safety and insurance requirements.

2. Hydrogen Sulfide Training

All personnel, whether regularly assigned, contracted, or employed on an unscheduled basis, will have received training from a qualified instructor in the following areas prior to entering the drilling pad area of the well:

1. The hazards and characteristics of hydrogen sulfide gas.
2. The proper use of personal protective equipment and life support systems.
3. The proper use of hydrogen sulfide detectors, alarms, warning systems, briefing areas, evacuation procedures.
4. The proper techniques for first aid and rescue operations.

Additionally, supervisory personnel will be trained in the following areas:

- 1 The effects of hydrogen sulfide on metal components. If high tensile tubular systems are utilized, supervisory personnel will be trained in their special maintenance requirements.
- 2 Corrective action and shut in procedures, blowout prevention, and well control procedures while drilling a well.
- 3 The contents of the Hydrogen Sulfide Drilling Operations Plan.

There will be an initial training session prior to encountering a known hydrogen sulfide source. The initial training session shall include a review of the site specific Hydrogen Sulfide Drilling Operations Plan.

3. Hydrogen Sulfide Safety Equipment and Systems

All hydrogen sulfide safety equipment and systems will be installed, tested, and operational prior to drilling below the intermediate casing.

1. Well Control Equipment
 - A. Flare line with automatic igniter or continuous ignition source.
 - B. Choke manifold with minimum of one adjustable choke.
 - C. Blowout preventers equipped with blind rams and pipe rams to accommodate all pipe sizes with properly sized closing unit
 - D. Auxiliary equipment including annular type blowout preventer.
2. Protective Equipment for Essential Personnel

Thirty minute self contained work unit located at briefing area as indicated on wellsite diagram.

3. Hydrogen Sulfide Protection and Monitoring Equipment

Two portable hydrogen sulfide monitors positioned on location for optimum coverage and detection. The units shall have audible sirens to notify personnel when hydrogen sulfide levels exceed 20 PPM.

4. Visual Warning Systems

A. Wind direction indicators as indicated on the wellsite diagram.

B. Caution signs shall be posted on roads providing access to location. Signs shall be painted a high visibility color with lettering of sufficient size to be readable at reasonable distances from potentially contaminated areas.

4. **Mud Program**

The mud program has been designed to minimize the amount of hydrogen sulfide entrained in the mud system. Proper mud weight, safe drilling practices, and the use of hydrogen sulfide scavengers will minimize hazards while drilling the well.

5. **Metallurgy**

All tubular systems, wellheads, blowout preventers, drilling spools, kill lines, choke manifolds, and valves shall be suitable for service in a hydrogen sulfide environment when chemically treated.

6. **Communications**

State & County Officials phone numbers are posted on rig floor and supervisors trailer. Communications in company vehicles and toolpushers are either two way radios or cellular phones.

7. **Well Testing**

Drill stem testing is not an anticipated requirement for evaluation of this well. A drill stem test is required, it will be conducted with a minimum number of personnel in the immediate vicinity. The test will be conducted during daylight hours only.

8. **Emergency Phone Numbers**

| | |
|--|---------------------|
| Eddy County Sheriff's Office | 911 or 575-887-7551 |
| Ambulance Service | 911 or 575-885-2111 |
| Carlsbad Fire Dept | 911 or 575-885-2111 |
| Loco Hills Volunteer Fire Dept. | 911 or 575-677-3266 |
| Closest Medical Facility - Columbia Medical Center of Carlsbad | 575-492-5000 |

| | | |
|-----------------------|-----------------------|--------------|
| Mewbourne Oil Company | Hobbs District Office | 575-393-5905 |
| | Fax | 575-397-6252 |
| | 2 nd Fax | 575-393-7259 |

| | | |
|-------------------------|---------------|--------------|
| District Manager | Micky Young | 575-390-0999 |
| Drilling Superintendent | Frosty Lathan | 575-390-4103 |
| Drilling Foreman | Wesley Noseff | 575-441-0729 |
| Drilling Foreman | George Smith | 575-390-4365 |

MULTI-POINT SURFACE USE AND OPERATIONS PLAN

MEWBOURNE OIL COMPANY

Limousine "15" FE Federal · #1H
2290' FNL & 2275' FEL (SHL)
Sec 15-T20S-R25E
Eddy County, New Mexico

This plan is submitted with Form 3160-3, Application for Permit to Drill, Covering the above described well. The purpose of this plan is to describe the location of the proposed well, the proposed construction activities and operations plan, the magnitude of the surface disturbance involved, and the procedures to be followed in restoring the surface so that a complete appraisal can be made of the environmental impact associated with the proposed operations.

1. Existing Roads:

- A. Exhibit #3 is a road map showing the location of the proposed well. Existing roads are highlighted in black and proposed road is highlighted in blue. Exhibit #3A is a topographic map showing the location of the proposed well and access road. Existing and proposed roads are highlighted in black.
- B. **Directions to location: From Carlsbad on US 285, north 12 miles to White Pine Rd. Turn left (west) 2 ½ miles to lease road. Turn right (north) ¼ mile to location.**

2. Proposed Access Road:

- A. No new road will be needed.
- B. Mewbourne Oil Co. will cooperate with other operators in the maintenance of lease roads.

3. Location of Existing Wells:

There are producing wells within the immediate vicinity of the well site. Exhibit #4 shows the proposed well and existing wells within a one mile radius.

4. Location of Existing and/or Proposed Facilities:

- A. There are no production facilities on this lease at the present time.
- B. In the event that the well is productive, production facilities will be located on the north side of well pad. Will lay an above-ground poly pipe flowline approx 1300 feet north (20' east of lease road) and 700 feet east (20' south of lease road) paralleling the lease road to an existing facility located at the Mewbourne Oil Co. Quick Draw 15 CD battery location. Electricity exists at edge of location.
- C. No production vessels will be placed on this location. Puming unit will be painted to conform with BLM painting stipulations within 180 days of installation.

5. Location and Type of Water Supply

The well will be drilled with a combination of fresh water and brine water based mud systems. The water will be obtained from commercial suppliers in the area and/or hauled to the location by transport trucks over existing and proposed roads as indicated in Exhibit #3.

6. Source of Construction Materials

All material required for construction of the drill pad and access roads will be obtained from private, state, or federal pits. The construction contractor will be solely responsible for securing construction materials required for this operation and paying any royalties that may be required on those materials.

7. Methods of Handling Waste Disposal:

- A. Drill cuttings not retained for evaluation purposed will be hauled to CRI permit# NM-010006.
- B. Water produced during operations will be hauled to Exxon #1 SWD permit# 180, or another permitted SWD in the area.
- C. If any liquid hydrocarbons are produced during operations, those liquids will be stored in suitable tanks until sold.
- D. Current regulations regarding the proper disposal of human waste will be followed.
- E. All trash, junk, and other waste materials will be stored in proper containers to prevent dispersal and will be removed to an appropriate facility within one week of cessation of drilling and completion activities.

8. Ancillary Facilities

There are no ancillary facilities within the immediate vicinity of the proposed well site.

9. Well Site Layout

- A. A diagram of the drill pad is shown in Exhibit #5. Dimensions of the pad and location of major rig components are shown. 300'
- B. The pad dimension of 230' x ~~250'~~ has been staked and flagged.
- C. An archaeological survey is in the process of being conducted on the proposed location pad.

TEN
9/13/10

10. Plans for Restoration of Surface

- A. Upon cessation of the proposed operations, if the well is abandoned, the location and road surfacing material will be removed. The entire location will be restored to the original contour as much as reasonable possible using stockpiled top soil. All trash and garbage will be hauled to appropriate disposal to assure the location is aesthetically pleasing as reasonable possible. All restoration work will be completed within 180 days of cessation of activities.
- B. The disturbed area will be restored by re-seeding during the proper growing season.
- C. Any additional caliche required for production facilities will be obtained from the area shown in exhibit #6 as interim reclamation.
- D. Within 90 days of cessation of drilling and completion operations, all equipment not necessary for production operations will be removed. The location will be cleaned of all trash and junk to assure the well site is left as aesthetically pleasing as reasonably possible.

11. Surface Ownership:

The surface is owned by Chrystine Anderson Willard, et al., P.O. Box 1175, Artesia, NM 88211-1174. Phone# (575) 746-9211. Steve Wilard (a representative of the owners) has agreed to the proposed surface use plans.

12. Other Information:

- A. Topography: Refer to the archaeological report for a detailed description of flora, fauna, soil characteristics, dwellings, and historical or cultural sites.
- B. The primary use of the surface at the location is for grazing of livestock.

13. Operator's Representative:

- A. Through APD approval, drilling, completion and production operations:

N.M. Young, District Manager
Mewbourne Oil Company
PO Box 5270
Hobbs, NM 88241
575-393-5905

Mewbourne Oil Company

PO Box 5270
Hobbs, NM 88241
(575) 393-5905

I hereby certify that I, or someone under my direct supervision, have inspected the drill site and access route proposed herein; that I am familiar with the conditions which currently exist; that I have full knowledge of State and Federal laws applicable to this operation; that the statements made in this APD package are, to the best of my knowledge, true and correct; and that the work associated with the operations proposed herein will be performed in conformity with this APD package and the terms and conditions under which it is approved. I also certify that I, or the company I represent, am responsible for the operations conducted under this application. These statements are subject to the provisions of 18 U.S.C. 1001 for the filing of false statements.

Executed this 2 day of July, 2010.

Name: NM Young

Signature: NM Young by Jackie Lathan

Position Title: Hobbs District Manager

Address: PO Box 5270, Hobbs NM 88241

Telephone: 575-393-5905

E-mail: myoung@mewbourne.com

PECOS DISTRICT CONDITIONS OF APPROVAL

| | |
|-----------------------|-------------------------------------|
| OPERATOR'S NAME: | Mewbourne Oil Co |
| LEASE NO.: | NM14758 |
| WELL NAME & NO.: | 1H Limousine 15 FE Federal |
| SURFACE HOLE FOOTAGE: | 2290' FNL & 2275' FEL |
| BOTTOM HOLE FOOTAGE: | 2290' FNL & 330' FWL |
| LOCATION: | Section 15, T. 20 S., R 25 E., NMPM |
| COUNTY: | Eddy County, New Mexico |

TABLE OF CONTENTS

Standard Conditions of Approval (COA) apply to this APD. If any deviations to these standards exist or special COAs are required, the section with the deviation or requirement will be checked below.

- ☐ **General Provisions**
- ☐ **Permit Expiration**
- ☒ **Archaeology, Paleontology, and Historical Sites**
- ☐ **Noxious Weeds**
- ☒ **Special Requirements**
 - Hydrology
 - Cave/Karst
- ☒ **Construction**
 - Notification
 - Topsoil
 - Closed Loop System
 - Federal Mineral Material Pits
 - Well Pads
 - Roads
- ☐ **Road Section Diagram**
- ☒ **Drilling**
 - Logging Requirements
 - High Cave/Karst
 - Waste Material and Fluids
- ☒ **Production (Post Drilling)**
 - Well Structures & Facilities
 - Pipelines
- ☐ **Interim Reclamation**
- ☐ **Final Abandonment & Reclamation**

I. GENERAL PROVISIONS

The approval of the Application For Permit To Drill (APD) is in compliance with all applicable laws and regulations: 43 Code of Federal Regulations 3160, the lease terms, Onshore Oil and Gas Orders, Notices To Lessees, New Mexico Oil Conservation Division (NMOCD) Rules, National Historical Preservation Act As Amended, and instructions and orders of the Authorized Officer. Any request for a variance shall be submitted to the Authorized Officer on Form 3160-5, Sundry Notices and Report on Wells.

II. PERMIT EXPIRATION

If the permit terminates prior to drilling and drilling cannot be commenced within 60 days after expiration, an operator is required to submit Form 3160-5, Sundry Notices and Reports on Wells, requesting surface reclamation requirements for any surface disturbance. However, if the operator will be able to initiate drilling within 60 days after the expiration of the permit, the operator must have set the conductor pipe in order to allow for an extension of 60 days beyond the expiration date of the APD. (Filing of a Sundry Notice is required for this 60 day extension.)

III. ARCHAEOLOGICAL, PALEONTOLOGY & HISTORICAL SITES

Any cultural and/or paleontological resource discovered by the operator or by any person working on the operator's behalf shall immediately report such findings to the Authorized Officer. The operator is fully accountable for the actions of their contractors and subcontractors. The operator shall suspend all operations in the immediate area of such discovery until written authorization to proceed is issued by the Authorized Officer. An evaluation of the discovery shall be made by the Authorized Officer to determine the appropriate actions that shall be required to prevent the loss of significant cultural or scientific values of the discovery. The operator shall be held responsible for the cost of the proper mitigation measures that the Authorized Officer assesses after consultation with the operator on the evaluation and decisions of the discovery. Any unauthorized collection or disturbance of cultural or paleontological resources may result in a shutdown order by the Authorized Officer.

IV. NOXIOUS WEEDS

The operator shall be held responsible if noxious weeds become established within the areas of operations. Weed control shall be required on the disturbed land where noxious weeds exist, which includes the roads, pads, associated pipeline corridor, and adjacent land affected by the establishment of weeds due to this action. The operator shall consult with the Authorized Officer for acceptable weed control methods, which include following EPA and BLM requirements and policies.

V. SPECIAL REQUIREMENT(S)

Bureau of Land Management, Carlsbad Field Office

620 E. Greene Street Carlsbad, NM 88220

Cultural and Archaeological Resources

Conditions of Approval

Historic properties in the vicinity of this project are protected by federal law. In order to ensure that they are not damaged or destroyed by construction activities, the project proponent and construction supervisors shall ensure that the following stipulations are implemented.

Date of Issue: 7/9/2010

BLM Report No.:

10-NM-523-421

Project Name: Limousine 15FE Federal Number 1H Location, Eddy County, New Mexico

1. Professional archaeological monitoring. Contact your project archaeologist.

These stipulations must be given to your monitor at least 5 days prior to the start of construction.

No construction, including vegetation removal or other site prep may begin prior to the arrival of the monitor.

2. The archaeological monitor

Observe all initial ground-disturbing activities for the Limousine 15FE Federal Number 1H.

Ensure that all construction, vehicles remain outside of cultural site no. LA 139067.

Other

Site Protection and Employee Education: It is the responsibility of the project proponent and his construction supervisor to inform all employees and subcontractors that cultural and archaeological sites are to be avoided by all personnel, vehicles, and equipment; and that it is illegal to collect, damage, or disturb cultural resources on Public Lands.

For assistance, contact BLM Cultural Resources:

Bruce Boeke

(575) 234-5917

Hydrology: Any water erosion that may occur due to the construction of the well pad during the life of the well will be quickly corrected and proper measures will be taken to prevent future erosion.

Cave and Karst

** Depending on location, additional Drilling, Casing, and Cementing procedures may be required by engineering to protect critical karst groundwater recharge areas.

Cave/Karst Surface Mitigation

The following stipulations will be applied to minimize impacts during construction, drilling and production.

Construction:

In the advent that any underground voids are opened up during construction activities, construction activities will be halted and the BLM will be notified immediately.

No Blasting:

No blasting will be utilized for pad construction. The pad will be constructed and leveled by adding the necessary fill and caliche.

Pad Berming:

The pad will be bermed to prevent oil, salt, and other chemical contaminants from leaving the pad. All sides will be bermed.

Tank Battery Liners and Berms:

Tank battery locations will be lined and bermed. A 20 mil permanent liner will be installed with a 4 oz. felt backing to prevent tears or punctures. Tank battery berms must be large enough to contain 1 ½ times the content of the largest tank.

Leak Detection System:

A method of detecting leaks is required. The method could incorporate gauges to measure loss, siting valves and lines so they can be visually inspected, or installing electronic sensors to alarm when a leak is present. Leak detection plan will be submitted to BLM for approval.

Automatic Shut-off Systems:

Automatic shut off, check valves, or similar systems will be installed for pipelines and tanks to minimize the effects of catastrophic line failures used in production or drilling.

Cave/Karst Subsurface Mitigation

The following stipulations will be applied to protect cave/karst and ground water concerns:

Rotary Drilling with Fresh Water:

Fresh water will be used as a circulating medium in zones where caves or karst features are expected. SEE ALSO: Drilling COAs for this well.

Directional Drilling:

Kick off for directional drilling will occur at least 100 feet below the bottom of the cave occurrence zone. SEE ALSO: Drilling COAs for this well.

Lost Circulation:

ALL lost circulation zones from the surface to the base of the cave occurrence zone will be logged and reported in the drilling report.

Regardless of the type of drilling machinery used, if a void of four feet or more and circulation losses greater than 70 percent occur simultaneously while drilling in any cave-bearing zone, the BLM will be notified immediately by the operator. The BLM will assess the situation and work with the operator on corrective actions to resolve the problem.

Abandonment Cementing:

Upon well abandonment in high cave karst areas additional plugging conditions of approval may be required. The BLM will assess the situation and work with the operator to ensure proper plugging of the wellbore.

Pressure Testing:

Annual pressure monitoring will be performed by the operator on all casing annuli and reported in a sundry notice. If the test results indicated a casing failure has occurred, remedial action will be undertaken to correct the problem to the BLM's approval.

VI. CONSTRUCTION

A. NOTIFICATION

The BLM shall administer compliance and monitor construction of the access road and well pad. Notify the Carlsbad Field Office at (575) 234-5972 at least 3 working days prior to commencing construction of the access road and/or well pad.

When construction operations are being conducted on this well, the operator shall have the approved APD and Conditions of Approval (COA) on the well site and they shall be made available upon request by the Authorized Officer.

B. TOPSOIL

The operator shall stockpile the topsoil in a low profile manner in order to prevent wind/water erosion of the topsoil. The topsoil to be stripped is approximately 6 inches in depth. The topsoil will be used for interim and final reclamation.

C. CLOSED LOOP SYSTEM

Tanks are required for drilling operations: No Pits.

The operator shall properly dispose of drilling contents at an authorized disposal site.

D. FEDERAL MINERAL MATERIALS PIT

Payment shall be made to the BLM prior to removal of any federal mineral materials. Call the Carlsbad Field Office at (575) 234-5972.

E. WELL PAD SURFACING

Surfacing of the well pad is not required.

If the operator elects to surface the well pad, the surfacing material may be required to be removed at the time of reclamation.

The well pad shall be constructed in a manner which creates the smallest possible surface disturbance, consistent with safety and operational needs.

F. ON LEASE ACCESS ROADS

Road Width

The access road shall have a driving surface that creates the smallest possible surface disturbance and does not exceed fourteen (14) feet in width. The maximum width of surface disturbance, when constructing the access road, shall not exceed twenty (20) feet.

Surfacing

Surfacing material is not required on the new access road driving surface. If the operator elects to surface the new access road or pad, the surfacing material may be required to be removed at the time of reclamation.

Where possible, no improvements should be made on the unsurfaced access road other than to remove vegetation as necessary, road irregularities, safety issues, or to fill low areas that may sustain standing water.

The Authorized Officer reserves the right to require surfacing of any portion of the access road at any time deemed necessary. Surfacing may be required in the event the road deteriorates, erodes, road traffic increases, or it is determined to be beneficial for future field development. The surfacing depth and type of material will be determined at the time of notification.

Crowning

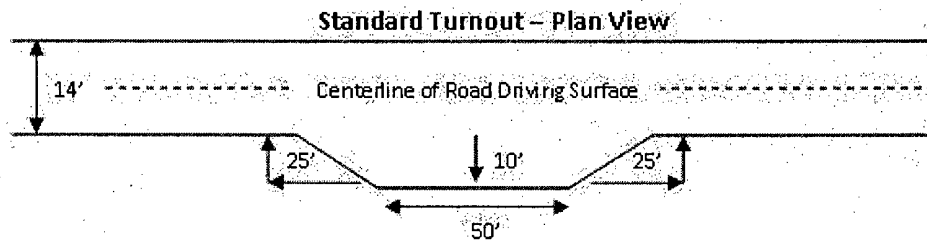
Crowning shall be done on the access road driving surface. The road crown shall have a grade of approximately 2% (i.e., a 1" crown on a 14' wide road). The road shall conform to Figure 1; cross section and plans for typical road construction.

Ditching

Ditching shall be required on both sides of the road.

Turnouts

Vehicle turnouts shall be constructed on the road. Turnouts shall be intervisible with interval spacing distance less than 1000 feet. Turnouts shall be constructed on all blind curves. Turnouts shall conform to the following diagram:

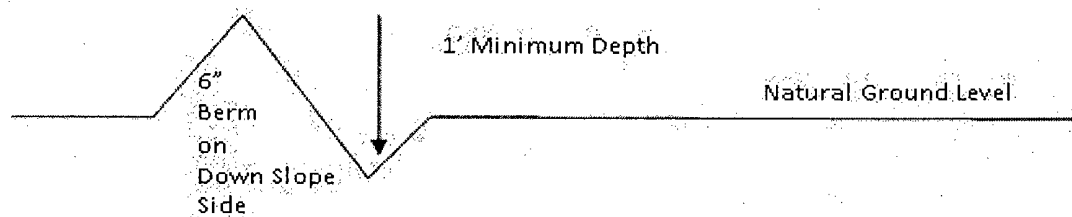


Drainage

Drainage control systems shall be constructed on the entire length of road (e.g. ditches, sidehill outslowing and insloping, lead-off ditches, culvert installation, and low water crossings).

A typical lead-off ditch has a minimum depth of 1 foot below and a berm of 6 inches above natural ground level. The berm shall be on the down-slope side of the lead-off ditch.

Cross Section of a Typical Lead-off Ditch



All lead-off ditches shall be graded to drain water with a 1 percent minimum to 3 percent maximum ditch slope. The spacing interval are variable for lead-off ditches and shall be determined according to the formula for spacing intervals of lead-off ditches, but may be amended depending upon existing soil types and centerline road slope (in %);

Formula for Spacing Interval of Lead-off Ditches

Example - On a 4% road slope that is 400 feet long, the water flow shall drain water into a lead-off ditch. Spacing interval shall be determined by the following formula:

$$400 \text{ foot road with } 4\% \text{ road slope: } \frac{400'}{4\%} + 100' = 200' \text{ lead-off ditch interval}$$

Culvert Installations

Appropriately sized culvert(s) shall be installed at the deep waterway channel flow crossing.

Cattleguards

An appropriately sized cattleguard(s) sufficient to carry out the project shall be installed and maintained at fence crossing(s).

Any existing cattleguard(s) on the access road shall be repaired or replaced if they are damaged or have deteriorated beyond practical use. The operator shall be responsible for the condition of the existing cattleguard(s) that are in place and are utilized during lease operations.

A gate shall be constructed and fastened securely to H-braces.

Fence Requirement

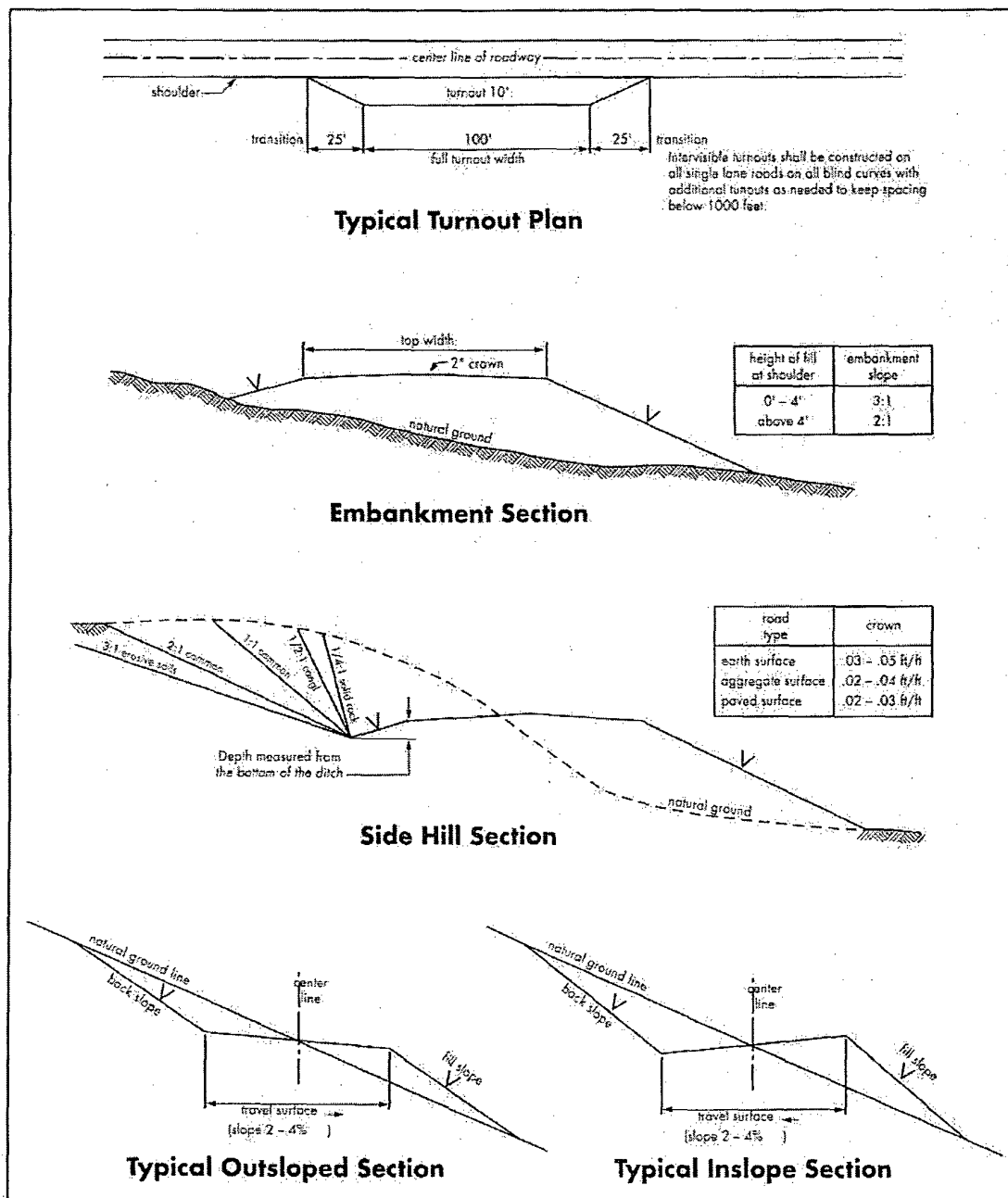
Where entry is required across a fence line, the fence shall be braced and tied off on both sides of the passageway prior to cutting.

The operator shall notify the private surface landowner or the grazing allotment holder prior to crossing any fence(s).

Public Access

Public access on this road shall not be restricted by the operator without specific written approval granted by the Authorized Officer.

Figure 1 – Cross Sections and Plans For Typical Road Sections



No pea gravel permitted for remedial or fall back remedial without prior authorization from the BLM engineer.

HIGH CAVE/KARST – CONTINGENCY CASING WILL BE REQUIRED IF LOST CIRCULATION OCCURS WHILE DRILLING THE SURFACE HOLE. THE SURFACE HOLE WILL HAVE TO BE REAMED AND A LARGER CASING INSTALLED. IF LOST CIRCULATION OCCURS WHILE DRILLING THE 8-3/4" AND 7-7/8" HOLE, THE CEMENT PROGRAM FOR THE 5-1/2" AND 4-1/2" CASING WILL NEED TO BE MODIFIED AND THE BLM IS TO BE CONTACTED PRIOR TO RUNNING THE CASING. A MINIMUM OF TWO CASING STRINGS CEMENTED TO SURFACE IS REQUIRED IN HIGH CAVE/KARST AREAS. THE CEMENT MUST BE IN A SOLID SHEATH THEREFORE, ONE INCH OPERATIONS WILL NOT BE PERMITTED.

Possible lost circulation in the San Andres.

1. The 9-5/8 inch surface casing shall be set at **approximately 950 feet** and cemented to the surface. **Surface casing to be set in a competent bed within the San Andres.**
 - a. If cement does not circulate to the surface, the appropriate BLM office shall be notified and a temperature survey utilizing an electronic type temperature survey with surface log readout will be used or a cement bond log shall be run to verify the top of the cement. Temperature survey will be run a minimum of six hours after pumping cement and ideally between 8-10 hours after completing the cement job.
 - b. **Wait on cement (WOC) time for a primary cement job is to include the lead cement slurry.**
 - c. Wait on cement (WOC) time for a remedial job will be a minimum of 4 hours after bringing cement to surface or 500 pounds compressive strength, whichever is greater.
 - d. If cement falls back, remedial cementing will be done prior to drilling out that string.
2. The minimum required fill of cement behind the 5-1/2 & 4-1/2 inch production casing is:
 - a. First stage to DV tool, cement shall:
 - ☒ Cement not required – Packer system to be used.

If Option 1 is used, BLM is to be notified of ALL rig moves, and is to be contacted IMMEDIATELY if any excess pressure is discovered.

If Option 2 is used, contact the BLM to prevent anticipating rig moves.

b. Second stage above DV tool, cement shall:

☒ Cement to surface. If cement does not circulate, contact the appropriate BLM office.

3. If hardband drill pipe is rotated inside casing, returns will be monitored for metal. If metal is found in samples, drill pipe will be pulled and rubber protectors which have a larger diameter than the tool joints of the drill pipe will be installed prior to continuing drilling operations.

C. PRESSURE CONTROL

1. All blowout preventer (BOP) and related equipment (BOPE) shall comply with well control requirements as described in Onshore Oil and Gas Order No. 2 and API RP 53 Sec. 17.
2. Minimum working pressure of the blowout preventer (BOP) and related equipment (BOPE) required for drilling below the surface casing shoe shall be **2000 (2M) psi**.
3. The appropriate BLM office shall be notified a minimum of 4 hours in advance for a representative to witness the tests.
 - a. In a water basin, for all casing strings utilizing slips, these are to be set as soon as the crew and rig are ready and any fallback cement remediation has been done. The casing cut-off and BOP installation can be initiated four hours after installing the slips, which will be approximately six hours after bumping the plug. For those casing strings not using slips or where the float does not hold, the minimum wait time before cut-off is eight hours after bumping the plug or when the cement reaches 500 psi compressive strength (including lead when specified), whichever is greater. BOP/BOPE testing can begin after the above conditions are satisfied.
 - b. The tests shall be done by an independent service company utilizing a test plug **not a cup or J-packer**. The operator also has the option of utilizing an independent tester to test without a plug (i.e. against the casing) pursuant to Onshore Order 2 with the pressure not to exceed 70% of the burst rating for the casing. Any test against the casing must meet the WOC time for water basin (18 hours) or potash (24 hours) prior to initiating the test.
 - c. The results of the test shall be reported to the appropriate BLM office.
 - d. All tests are required to be recorded on a calibrated test chart. **A copy of the BOP/BOPE test chart and a copy of independent service company test will be submitted to the appropriate BLM office.**

- e. The BOP/BOPE test shall include a low pressure test from 250 to 300 psi. The test will be held for a minimum of 10 minutes if test is done with a test plug and 30 minutes without a test plug.

D. DRILL STEM TEST

If drill stem tests are performed, Onshore Order 2.III.D shall be followed.

E. WASTE MATERIAL AND FLUIDS

All waste (i.e. drilling fluids, trash, salts, chemicals, sewage, gray water, etc.) created as a result of drilling operations and completion operations shall be safely contained and disposed of properly at a waste disposal facility. No waste material or fluid shall be disposed of on the well location or surrounding area.

DHW 092210

VIII. PRODUCTION (POST DRILLING)

A. WELL STRUCTURES & FACILITIES

Placement of Production Facilities

Production facilities should be placed on the well pad to allow for maximum interim recontouring and revegetation of the well location.

Containment Structures

The containment structure shall be constructed to hold the capacity of the entire contents of the largest tank, plus 24 hour production, unless more stringent protective requirements are deemed necessary by the Authorized Officer.

Painting Requirement

All above-ground structures including meter housing that are not subject to safety requirements shall be painted a flat non-reflective paint color
Shale Green, Munsell Soil Color Chart # 5Y 4/2

B. PIPELINES

STANDARD STIPULATIONS FOR SURFACE INSTALLED PIPELINES

A copy of the APD and attachments, including stipulations, survey plat and/or map, will be on location during construction. BLM personnel may request to you a copy of your permit during construction to ensure compliance with all stipulations.

Holder agrees to comply with the following stipulations to the satisfaction of the Authorized Officer:

1. The holder shall indemnify the United States against any liability for damage to life or property arising from the occupancy or use of public lands under this grant.

2. The holder shall comply with all applicable Federal laws and regulations existing or hereafter enacted or promulgated. In any event, the holder shall comply with the Toxic Substances Control Act of 1976 as amended, 15 USC 2601 et seq. (1982) with regards to any toxic substances that are used, generated by or stored on the right-of-way or on facilities authorized under this right-of-way grant. (See 40 CFR, Part 702-799 and especially, provisions on polychlorinated biphenyls, 40 CFR 761.1-761.193.) Additionally, any release of toxic substances (leaks, spills, etc.) in excess of the reportable quantity established by 40 CFR, Part 117 shall be reported as required by the Comprehensive Environmental Response, Compensation, and Liability Act, section 102b. A copy of any report required or requested by any Federal agency or State government as a result of a reportable release or spill of any toxic substances shall be furnished to the authorized officer concurrent with the filing of the reports to the involved Federal agency or State government.

3. The holder agrees to indemnify the United States against any liability arising from the release of any hazardous substance or hazardous waste (as these terms are defined in the Comprehensive Environmental Response, Compensation and Liability Act of 1980, 42 U.S.C. 9601, et seq. or the Resource Conservation and Recovery Act, 42 U.S.C. 6901, et seq.) on the Right-of-Way (unless the release or threatened release is wholly unrelated to activity of the Right-of-Way holder's activity on the Right-of-Way), or resulting from the activity of the Right-of-Way holder on the Right-of-Way. This agreement applies without regard to whether a release is caused by the holder, its agent, or unrelated third parties.

4. The holder shall be liable for damage or injury to the United States to the extent provided by 43 CFR Sec. 2883.1-4. The holder shall be held to a standard of strict liability for damage or injury to the United States resulting from pipe rupture, fire, or spills caused or substantially aggravated by any of the following within the right-of-way or permit area:

- a. Activities of the holder including, but not limited to construction, operation, maintenance, and termination of the facility.
- b. Activities of other parties including, but not limited to:
 - (1) Land clearing.
 - (2) Earth-disturbing and earth-moving work.
 - (3) Blasting.
 - (4) Vandalism and sabotage.

c. Acts of God.

The maximum limitation for such strict liability damages shall not exceed one million dollars (\$1,000,000) for any one event, and any liability in excess of such amount shall be determined by the ordinary rules of negligence of the jurisdiction in which the damage or injury occurred.

This section shall not impose strict liability for damage or injury resulting primarily from an act of war or from the negligent acts or omissions of the United States.

5. If, during any phase of the construction, operation, maintenance, or termination of the pipeline, any oil, salt water, or other pollutant should be discharged from the pipeline system, impacting Federal lands, the control and total removal, disposal, and cleaning up of such oil, salt water, or other pollutant, wherever found, shall be the responsibility of the holder, regardless of fault. Upon failure of the holder to control, dispose of, or clean up such discharge on or affecting Federal lands, or to repair all damages resulting therefrom, on the Federal lands, the Authorized Officer may take such measures as he deems necessary to control and clean up the discharge and restore the area, including, where appropriate, the aquatic environment and fish and wildlife habitats, at the full expense of the holder. Such action by the Authorized Officer shall not relieve the holder of any responsibility as provided herein.

6. The authorized right-of-way width will be 25 feet. 14 feet of the right-of-way width will consist of existing disturbance (existing lease roads) and the remaining 11 feet will consist of area adjacent to the disturbance. All construction and maintenance activity will be confined to existing roads.

7. No blading or clearing of any vegetation will be allowed unless approved in writing by the Authorized Officer.

8. The holder shall install the pipeline on the surface in such a manner that will minimize suspension of the pipeline across low areas in the terrain. In hummocky or dune areas, the pipeline will be "snaked" around hummocks and dunes rather than suspended across these features.

9. The pipeline shall be buried with a minimum of 24 inches under all roads, "two-tracks," and trails. Burial of the pipe will continue for 20 feet on each side of each crossing. The condition of the road, upon completion of construction, shall be returned to at least its former state with no bumps or dips remaining in the road surface.

10. The holder shall minimize disturbance to existing fences and other improvements on public lands. The holder is required to promptly repair improvements to at least their former state. Functional use of these improvements will be maintained at all times. The holder will contact the owner of any improvements prior to disturbing them. When necessary to pass through a fence line, the fence shall be braced on both sides of the passageway prior to cutting of the fence. No permanent gates will be allowed unless

approved by the Authorized Officer.

11. In those areas where erosion control structures are required to stabilize soil conditions, the holder will install such structures as are suitable for the specific soil conditions being encountered and which are in accordance with sound resource management practices.

12. Excluding the pipe, all above-ground structures not subject to safety requirement shall be painted by the holder to blend with the natural color of the landscape. The paint used shall be a color which simulates "Standard Environmental Colors" – **Shale Green**, Munsell Soil Color No. 5Y 4/2; designated by the Rocky Mountain Five State Interagency Committee.

13. The pipeline will be identified by signs at the point of origin and completion of the right-of-way and at all road crossings. At a minimum, signs will state the holder's name, BLM serial number, and the product being transported. Signs will be maintained in a legible condition for the life of the pipeline.

14. The holder shall not use the pipeline route as a road for purposes other than routine maintenance as determined necessary by the Authorized Officer in consultation with the holder. The holder will take whatever steps are necessary to ensure that the pipeline route is not used as a roadway.

15. Any cultural and/or paleontological resource (historic or prehistoric site or object) discovered by the holder, or any person working on his behalf, on public or Federal land shall be immediately reported to the authorized officer. Holder shall suspend all operations in the immediate area of such discovery until written authorization to proceed is issued by the authorized officer. An evaluation of the discovery will be made by the authorized officer to determine appropriate cultural or scientific values. The holder will be responsible for the cost of evaluation and any decision as to proper mitigation measures will be made by the authorized officer after consulting with the holder.

IX. INTERIM RECLAMATION

During the life of the development, all disturbed areas not needed for active support of production operations should undergo interim reclamation in order to minimize the environmental impacts of development on other resources and uses.

Within six (6) months of well completion, operators should work with BLM surface management specialists (Jim Amos: 575-234-5909) to devise the best strategies to reduce the size of the location. Interim reclamation should allow for remedial well operations, as well as safe and efficient removal of oil and gas.

During reclamation, the removal of caliche is important to increasing the success of revegetating the site. Removed caliche that is free of contaminants may be used for road repairs, fire walls or for building other roads and locations. In order to operate the well or

complete workover operations, it may be necessary to drive, park and operate on restored interim vegetation within the previously disturbed area. Disturbing revegetated areas for production or workover operations will be allowed. If there is significant disturbance and loss of vegetation, the area will need to be revegetated. Communicate with the appropriate BLM office for any exceptions/exemptions if needed.

All disturbed areas after they have been satisfactorily prepared need to be reseeded with the seed mixture provided below.

Upon completion of interim reclamation, the operator shall submit a Sundry Notices and Reports on Wells, Subsequent Report of Reclamation (Form 3160-5).

X. FINAL ABANDONMENT & RECLAMATION

At final abandonment, well locations, production facilities, and access roads must undergo "final" reclamation so that the character and productivity of the land are restored.

Earthwork for final reclamation must be completed within six (6) months of well plugging. All pads, pits, facility locations and roads must be reclaimed to a satisfactory revegetated, safe, and stable condition, unless an agreement is made with the landowner or BLM to keep the road and/or pad intact.

After all disturbed areas have been satisfactorily prepared, these areas need to be revegetated with the seed mixture provided below. Seeding should be accomplished by drilling on the contour whenever practical or by other approved methods. Seeding may need to be repeated until revegetation is successful, as determined by the BLM.

Operators shall contact a BLM surface protection specialist prior to surface abandonment operations for site specific objectives (Jim Amos: 575-234-5909).

Seed Mixture 1, for Loamy Sites

The holder shall seed all disturbed areas with the seed mixture listed below. The seed mixture shall be planted in the amounts specified in pounds of pure live seed (PLS)* per acre. There shall be no primary or secondary noxious weeds in the seed mixture. Seed will be tested and the viability testing of seed will be done in accordance with State law(s) and within nine (9) months prior to purchase. Commercial seed will be either certified or registered seed. The seed container will be tagged in accordance with State law(s) and available for inspection by the authorized officer.

Seed will be planted using a drill equipped with a depth regulator to ensure proper depth regulator to ensure proper depth of planting where drilling is possible. The seed mixture will be evenly and uniformly planted over the disturbed area (small/heavier seeds have a tendency to drop the bottom of the drill and are planted first). The holder shall take appropriate measures to ensure this does not occur. Where drilling is not possible, seed will be broadcast and the area shall be raked or chained to cover the seed. When broadcasting the seed, the pounds per acre are to be doubled. The seeding will be repeated until a satisfactory stand is established as determined by the authorized officer. Evaluation of growth will not be made before completion of at least one full growing season after seeding.

Species to be planted in pounds of pure live seed* per acre:

| <u>Species</u> | <u>lb/acre</u> |
|---|----------------|
| Plains lovegrass (<i>Eragrostis intermedia</i>) | 0.5 |
| Sand dropseed (<i>Sporobolus cryptandrus</i>) | 1.0 |
| Sideoats grama (<i>Bouteloua curtipendula</i>) | 5.0 |

*Pounds of pure live seed:

Pounds of seed x percent purity x percent germination = pounds pure live seed