

District I  
1625 N. French Dr., Hobbs, NM 88240  
District II  
1301 W. Grand Avenue, Artesia, NM 88210  
District III  
1000 Rio Brazos Road, Aztec, NM 87410  
District IV  
1220 S. St. Francis Dr., Santa Fe, NM 87505

RECEIVED

DEC 06 2010

HOBBSOCD

State of New Mexico  
Energy Minerals and Natural Resources  
Oil Conservation Division  
1220 South St. Francis Dr.  
Santa Fe, NM 87505

Form C-101  
June 16, 2008

Submit to appropriate District Office

☐ AMENDED REPORT

**APPLICATION FOR PERMIT TO DRILL, RE-ENTER, DEEPEN, PLUGBACK, OR ADD A ZONE**

<sup>1</sup> Operator Name and Address BC Operating, Inc. P.O. Box 50820 Midland, TX 79710		<sup>2</sup> OGRID Number 160825
<sup>3</sup> Property Code 35684	<sup>5</sup> Property Name Rustler Bluff	<sup>4</sup> API Number 30 - 15 - 38302 <sup>6</sup> Well No. 3
<sup>9</sup> Proposed Pool 1 Willow Lake, Delaware		<sup>10</sup> Proposed Pool 2

<sup>7</sup> Surface Location

UL or lot no.	Section	Township	Range	Lot Idn	Feet from the	North/South line	Feet from the	East/West line	County
N	6	25 S	29 E		850'	South	1938'	West	Eddy

<sup>8</sup> Proposed Bottom Hole Location If Different From Surface

UL or lot no.	Section	Township	Range	Lot Idn	Feet from the	North/South line	Feet from the	East/West line	County

**Additional Well Information**

<sup>11</sup> Work Type Code N	<sup>12</sup> Well Type Code O	<sup>13</sup> Cable/Rotary R	<sup>14</sup> Lease Type Code State	<sup>15</sup> Ground Level Elevation 2907'
<sup>16</sup> Multiple No	<sup>17</sup> Proposed Depth 6550'	<sup>18</sup> Formation Delaware	<sup>19</sup> Contractor TBA	<sup>20</sup> Spud Date TBA

<sup>21</sup> Proposed Casing and Cement Program


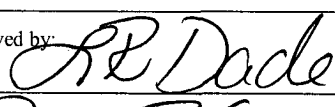
Hole Size	Casing Size	Casing weight/foot	Setting Depth	Sacks of Cement	Estimated TOC
12 1/4"	8 5/8"	32#	660'	600 sx	Surface
7 7/8"	5 1/2"	15.5#	6550'	700 sx	1000'

<sup>22</sup> Describe the proposed program. If this application is to DEEPEN or PLUG BACK, give the data on the present productive zone and proposed new productive zone. Describe the blowout prevention program, if any. Use additional sheets if necessary.

Mud Program: 0 to 660'  
FW/Spud Mud  
8.6 to 9.2 ppg

660' to 6550'  
Gel/Starch  
10 to 10.1 ppg

Bope Program: A 5000# bope will be installed on the 8-5/8" casing and tested daily.

<sup>23</sup> I hereby certify that the information given above is true and complete to the best of my knowledge and belief.		<b>OIL CONSERVATION DIVISION</b>	
Signature: 		Approved by: 	
Printed name: Star L. Harrell		Title: DIST II Supervisor	
Title: Regulatory Analyst		Approval Date: 12/8/2010	Expiration Date:
E-mail Address: sharrell@blackoakres.com			
Date: 12/3/10	Phone: (432) 684-9696 X 253	Conditions of Approval Attached <input type="checkbox"/>	

Kz 12/10/10

DISTRICT I  
1625 N. French Dr., Hobbs, NM 88240

State of New Mexico

Form C-102

Energy, Minerals, and Natural Resources Department

Revised October 12, 2005

DISTRICT II  
1301 W. Grand Avenue, Artesia, NM 88210

Submit to Appropriate District Office

OIL CONSERVATION DIVISION

State Lease - 4 copies

DISTRICT III  
1000 Rio Brazos Rd., Aztec, NM 87410

1220 South St. Francis Dr.

Fee Lease - 3 copies

Santa Fe, New Mexico 87505

DISTRICT IV  
1220 S. St. Francis Dr., Santa Fe, NM 87505

☐ AMENDED REPORT

WELL LOCATION AND ACREAGE DEDICATION PLAT

<sup>1</sup> API Number 30-015-38302	<sup>2</sup> Pool Code 164453	<sup>3</sup> Pool Name Willow Lake; Delaware
<sup>4</sup> Property Code 35684	<sup>5</sup> Property Name RUSTLER BLUFF	<sup>6</sup> Well Number 3
<sup>7</sup> OGRID No. 160825	<sup>8</sup> Operator Name BC OPERATING, INC.	<sup>9</sup> Elevation 2890'

<sup>10</sup> Surface Location

UL or lot no. N	Section 6	Township 25 SOUTH	Range 29 EAST, N.M.P.M.	Lot Idn	Feet from the 850'	North/South line SOUTH	Feet from the 1938'	East/West line WEST	County EDDY
--------------------	--------------	----------------------	----------------------------	---------	-----------------------	---------------------------	------------------------	------------------------	----------------

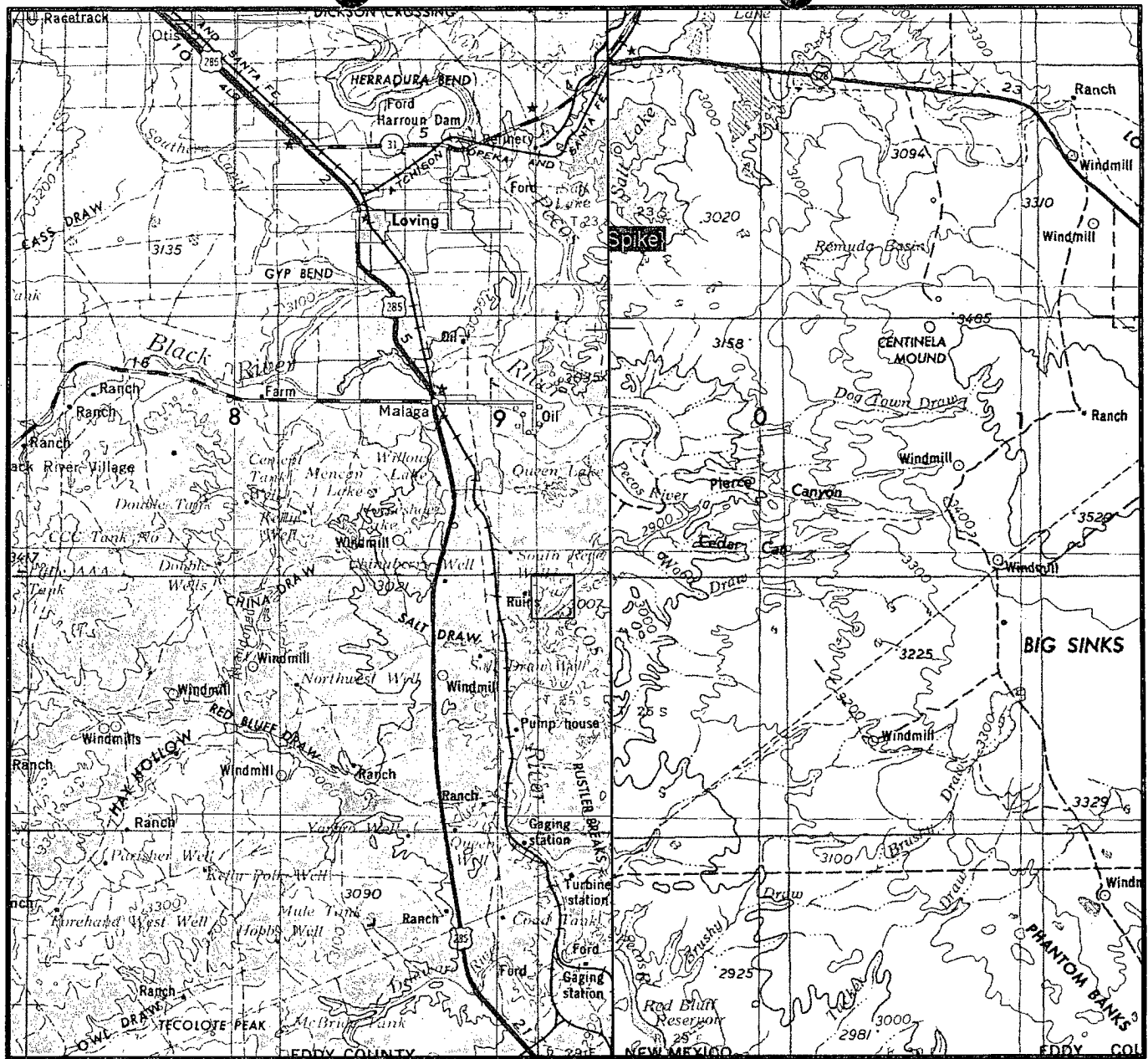
<sup>11</sup> Bottom Hole Location If Different From Surface

UL or lot no.	Section	Township	Range	Lot Idn	Feet from the	North/South line	Feet from the	East/West line	County
<sup>12</sup> 40	<sup>13</sup>		<sup>14</sup> Consolidation Code	<sup>15</sup> Order No.					

NO ALLOWABLE WELL BE ASSIGNED TO THIS COMPLETION UNTIL ALL INTERESTS HAVE BEEN CONSOLIDATED OR A NON-STANDARD UNIT HAS BEEN APPROVED BY THE DIVISION

<div><p>16</p><p>NAD 27 NM E ZONE X = 595260 Y = 419929 LAT.: N 32.1541283 LONG.: W 104.0255219</p></div> <p>1938'</p> <p>850'</p>	<p><b>OPERATOR CERTIFICATION</b></p> <p>I hereby certify that the information contained herein is true and complete to the best of my knowledge and belief, and that this organization either owns a working interest or unleased mineral interest in the land including the proposed bottom hole location or has a right to drill this well at this location pursuant to a contract with an owner of such a mineral or working interest, or to a voluntary pooling agreement or a compulsory pooling order heretofore entered by the division.</p> <p><i>[Signature]</i> 12/3/10 Signature Date STAR CHARREN Printed Name</p> <p><b>SURVEYOR CERTIFICATION</b></p> <p>I hereby certify that the well location shown on this plat was plotted from field notes of actual survey made by me or under my supervision, and that the same is true and correct to the best of my belief.</p> <p>MAY 13, 2008 Date of Survey Signature and Seal of Professional Surveyor</p> <p><i>[Signature]</i></p> <p>Michael Blake Brown R.P.S. #18329 JOB # 135664 / 24 NE / J.A.F.</p>
--	---

# VICINITY MAP



SECTION 6 TWP 25-S RGE 29-E

SURVEY NEW MEXICO PRINCIPAL MERIDIAN

COUNTY EDDY STATE NM

DESCRIPTION 850' FSL & 1938' FWL

OPERATOR BC OPERATING, INC

LEASE RUSTLER BLUFF #3

DISTANCE & DIRECTION FROM MALAGA GO SOUTH

± 4.0 MI. ON HWY. 285 THENCE EAST ± 1.0 MI. ON

LSE. RD. THENCE SOUTH ± 0.5 MI. THENCE EAST

± 1.4 MI. TO A POINT ± 1500' NORTH OF LOCATION.

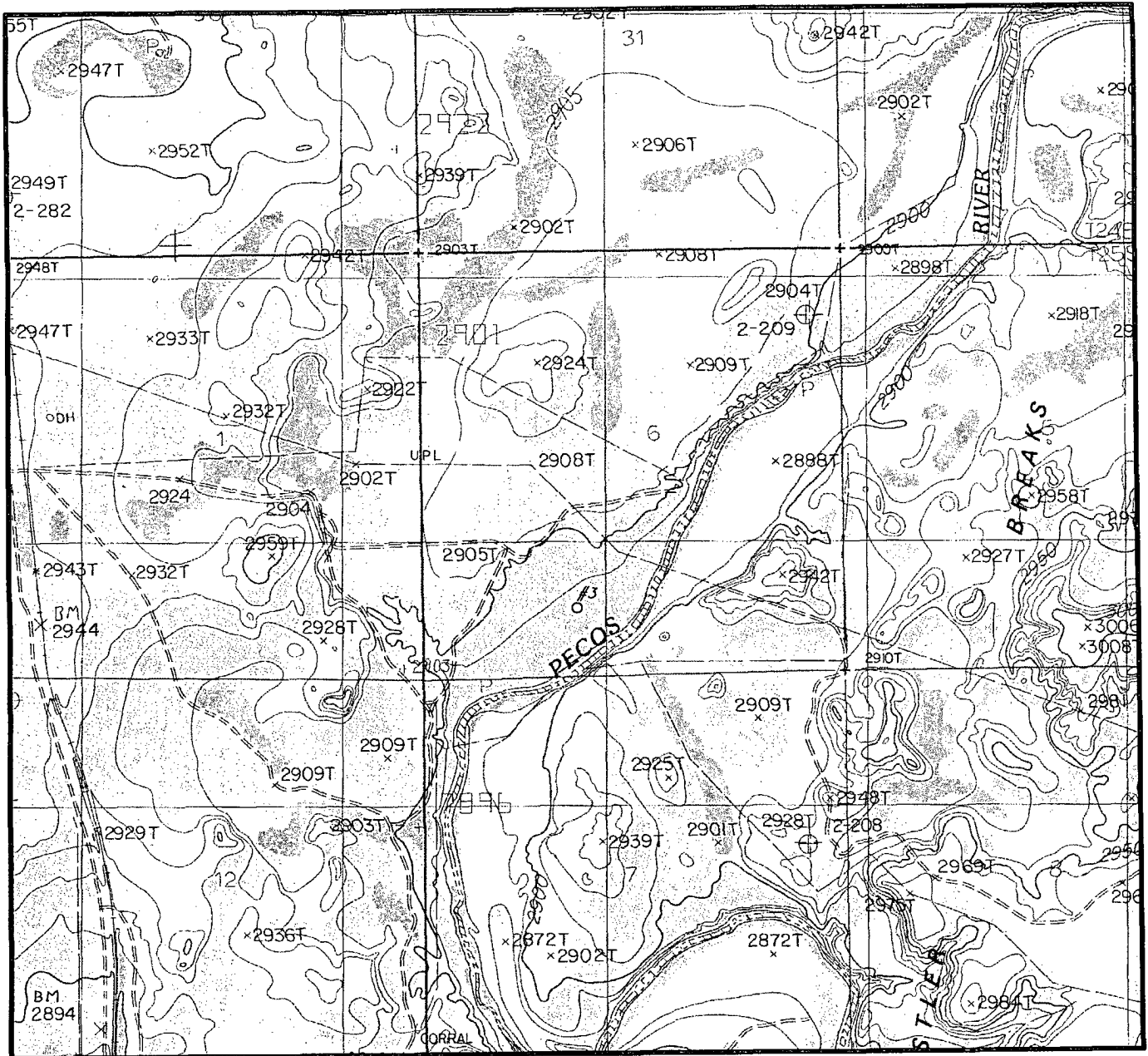


## TOPOGRAPHIC LAND SURVEYORS

Surveying & Mapping for the Oil & Gas Industry

2903 N. BIG SPRING  
MIDLAND, TX. 79705  
(800) 767-1653

# LOCATION & ELEVATION VERIFICATION MAP



SCALE : 1" = 2000'

CONTOUR INTERVAL 5'

SECTION 6 TWP 25-S RGE 29-E

SURVEY NEW MEXICO PRINCIPAL MERIDIAN

COUNTY EDDY STATE NM

DESCRIPTION 850' FSL & 1938' FWL

ELEVATION 2890'

OPERATOR BC OPERATING, INC.

LEASE RUSTLER BLUFF #3

U.S.G.S. TOPOGRAPHIC MAP  
MALAGA QUADRANGLE, NEW MEXICO

SCALED LAT. LAT.: N 32.1541283

LONG. LONG.: W 104.0255219



**TOPOGRAPHIC LAND SURVEYORS**

*Surveying & Mapping for the Oil & Gas Industry*

2903 N. BIG SPRING  
MIDLAND, TX. 79705  
(800) 767-1653