

## District I

1625 N. French Dr., Hobbs, NM 88240

## District II

1301 W. Grand Avenue, Artesia, NM 88210

## District III

1000 Rio Brazos Road, Aztec, NM 87410

## District IV

1220 S. St. Francis Dr., Santa Fe, NM 87508

## State of New Mexico

Energy Minerals and Natural Resources

Form C-101

June 16, 2008

## Oil Conservation Division

1220 South St. Francis Dr.

Santa Fe, NM 87505

Submit to appropriate District Office

☐ AMENDED REPORT

## APPLICATION FOR PERMIT TO DRILL, RE-ENTER, DEEPEN, PLUGBACK, OR ADD A ZONE

<sup>1</sup> Operator Name and Address BC Operating, Inc. P.O. Box 50820 Midland, TX 79710		<sup>2</sup> OGRID Number 160825
<sup>3</sup> Property Code 35684	<sup>5</sup> Property Name Rustler Bluff	<sup>4</sup> API Number 30 - 015-38305 <sup>6</sup> Well No. 7
<sup>9</sup> Proposed Pool 1 Willow Lake, Delaware		<sup>10</sup> Proposed Pool 2

<sup>7</sup> Surface Location

UL or lot no.	Section	Township	Range	Lot Idn	Feet from the	North/South line	Feet from the	East/West line	County
P	1	25 S	28 E		990'	South	660'	East	Eddy

<sup>8</sup> Proposed Bottom Hole Location If Different From Surface

UL or lot no.	Section	Township	Range	Lot Idn	Feet from the	North/South line	Feet from the	East/West line	County

## Additional Well Information

<sup>11</sup> Work Type Code N	<sup>12</sup> Well Type Code O	<sup>13</sup> Cable/Rotary R	<sup>14</sup> Lease Type Code State	<sup>15</sup> Ground Level Elevation 2905'
<sup>16</sup> Multiple No	<sup>17</sup> Proposed Depth 5500'	<sup>18</sup> Formation Delaware	<sup>19</sup> Contractor Felderhoff	<sup>20</sup> Spud Date 12/28/10

<sup>21</sup> Proposed Casing and Cement Program

Hole Size	Casing Size	Casing weight/foot	Setting Depth	Sacks of Cement	Estimated TOC
12 1/4"	8 5/8"	32#	660'	600 sx	Surface
7 7/8"	5 1/2"	15.5#	5500'	700 sx	1000'

<sup>22</sup> Describe the proposed program. If this application is to DEEPEN or PLUG BACK, give the data on the present productive zone and proposed new productive zone. Describe the blowout prevention program, if any. Use additional sheets if necessary.

Mud Program: 0 to 660'  
FW/Spud Mud  
8.6 to 9.2 ppg

660' to 5500'  
Gel/Starch  
10 to 10.1 ppg

Bope Program: A 5000# bope will be installed on the 8-5/8" casing and tested daily.

<sup>23</sup> I hereby certify that the information given above is true and complete to the best of my knowledge and belief.

Signature:



Printed name: Star L. Harrell

Title: Regulatory Analyst

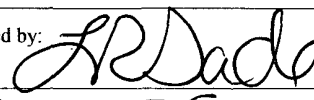
E-mail Address: sharrell@blackoakres.com

Date: 12/3/10

Phone: (432) 684-9696 X 253

## OIL CONSERVATION DIVISION

Approved by:



Title:

DIST II Supervisor

Approval Date: 12/8/2010

Expiration Date:

Conditions of Approval Attached ☐

KZ 12/7/10

**DISTRICT I**  
1625 N. French Dr., Hobbs, NM 88240

**DISTRICT II**  
1301 W. Grand Avenue, Artesia, NM 88210

**DISTRICT III**  
1000 Rio Brazos Rd., Aztec, NM 87410

**DISTRICT IV**  
1220 S. St. Francis Dr., Santa Fe, NM 87505

State of New Mexico

Energy, Minerals, and Natural Resources Department

**OIL CONSERVATION DIVISION**

1220 South St. Francis Dr.  
Santa Fe, New Mexico 87505

Form C-102

Revised October 12, 2005

Submit to Appropriate District Office

State Lease - 4 copies

Fee Lease - 3 copies

☐ AMENDED REPORT

**WELL LOCATION AND ACREAGE DEDICATION PLAT**

<sup>1</sup> API Number 30-015-38305	<sup>2</sup> Pool Code 604453	<sup>3</sup> Pool Name Willow Lake; Delaware
<sup>4</sup> Property Code 35684	<sup>5</sup> Property Name RUSTLER BLUFF	<sup>6</sup> Well Number 7
<sup>7</sup> OGRID No. 160825	<sup>8</sup> Operator Name BC OPERATING, INC.	<sup>9</sup> Elevation 2905'

**Surface Location**

UL or lot no.	Section	Township	Range	Lot Idn	Feet from the	North/South line	Feet from the	East/West line	County
P	1	25 SOUTH	28 EAST, N.M.P.M.		990'	SOUTH	660'	EAST	EDDY

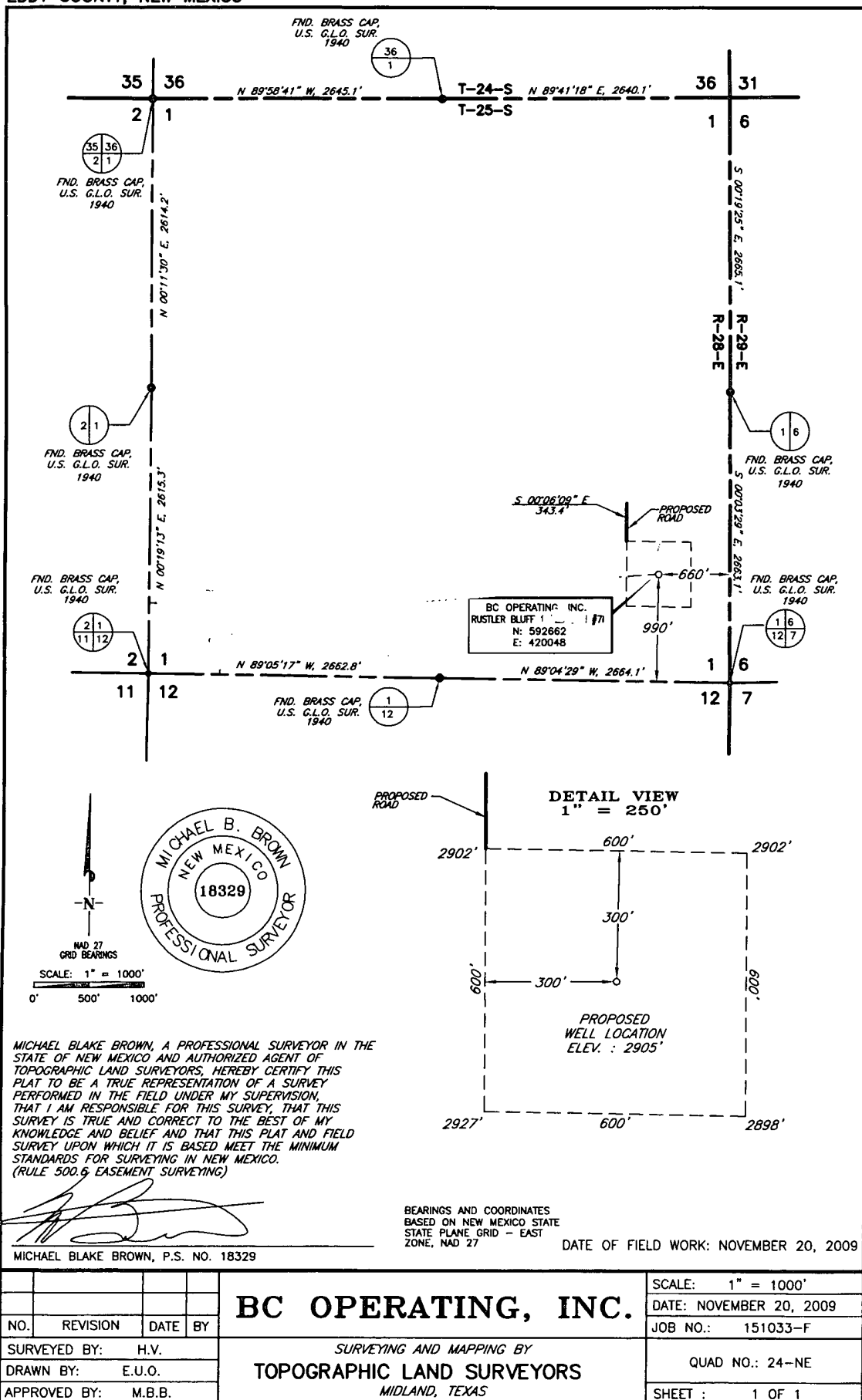
**Bottom Hole Location If Different From Surface**

UL or lot no.	Section	Township	Range	Lot Idn	Feet from the	North/South line	Feet from the	East/West line	County
<sup>12</sup> Dedicated Acres 40	<sup>13</sup> Joint or Infill	<sup>14</sup> Consolidation Code	<sup>15</sup> Order No.						

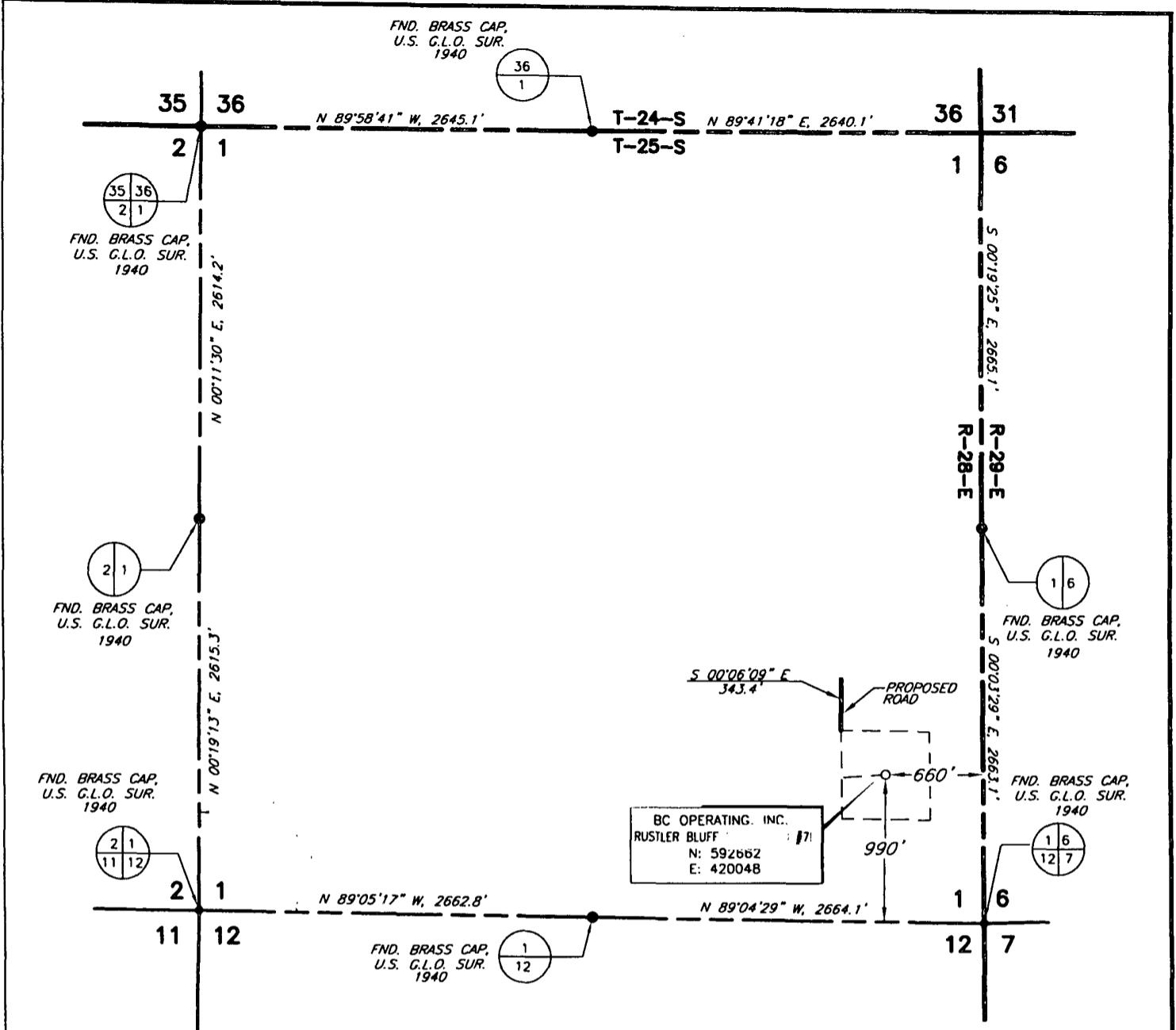
NO ALLOWABLE WELL BE ASSIGNED TO THIS COMPLETION UNTIL ALL INTERESTS HAVE BEEN CONSOLIDATED OR A NON-STANDARD UNIT HAS BEEN APPROVED BY THE DIVISION

<div><sup>16</sup></div> <div>NAD 27 NME ZONE X = 592662 Y = 420048 LAT.: N 32°09'16.11\" LONG.: W 104°02'02.09\"</div>	<p><b><sup>17</sup> OPERATOR CERTIFICATION</b></p> <p>I hereby certify that the information contained herein is true and complete to the best of my knowledge and belief, and that this organization either owns a working interest or unleased mineral interest in the land including the proposed bottom hole location or has a right to drill this well at this location pursuant to a contract with an owner of such a mineral or working interest, or to a voluntary pooling agreement or a compulsory pooling order heretofore entered by the division.</p> <p><i>[Signature]</i> 12/3/10 Signature Date STARL HARPER Printed Name</p>
	<p><b><sup>18</sup> SURVEYOR CERTIFICATION</b></p> <p>I hereby certify that the well location shown on this plat was plotted from field notes of actual surveys made by me or under my supervision, and that the same is true and correct to the best of my belief.</p> <p>18329 NOVEMBER 20, 2009</p> <p>Date of Survey Signature and Seal of Professional Surveyor</p> <p>Certificate Number Micheal Blake Brown P.S. #18329 JOB #151033 / 24 NE / E.U.O.</p>

PLAT SHOWING PROPOSED WELL LOCATION IN  
SECTION 1, T-25-S, R-28-E, N.M.P.M.  
EDDY COUNTY, NEW MEXICO



PLAT SHOWING PROPOSED WELL LOCATION IN  
SECTION 1, T-25-S, R-28-E, N.M.P.M.  
EDDY COUNTY, NEW MEXICO

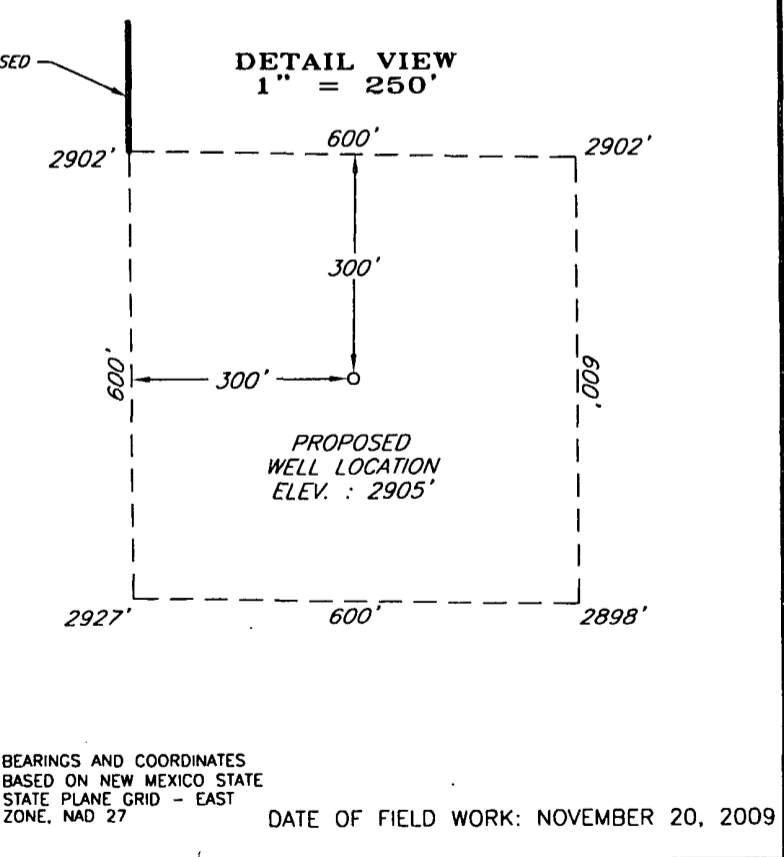


**MICHAEL B. BROWN**  
NEW MEXICO  
18329  
PROFESSIONAL SURVEYOR

NAD 27  
GRID BEARINGS  
SCALE: 1" = 1000'  
0' 500' 1000'

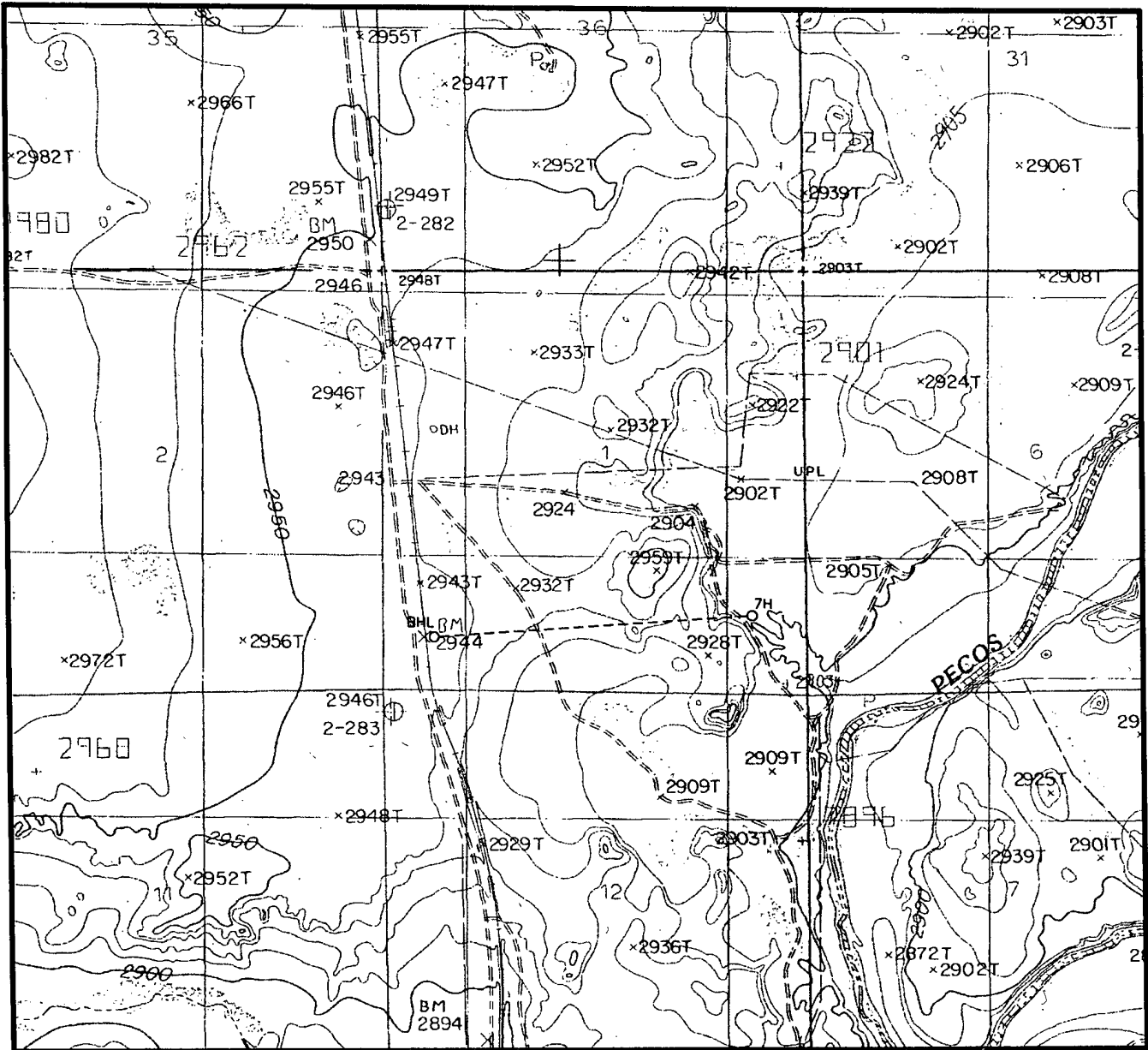
MICHAEL BLAKE BROWN, A PROFESSIONAL SURVEYOR IN THE STATE OF NEW MEXICO AND AUTHORIZED AGENT OF TOPOGRAPHIC LAND SURVEYORS, HEREBY CERTIFY THIS PLAT TO BE A TRUE REPRESENTATION OF A SURVEY PERFORMED IN THE FIELD UNDER MY SUPERVISION, THAT I AM RESPONSIBLE FOR THIS SURVEY, THAT THIS SURVEY IS TRUE AND CORRECT TO THE BEST OF MY KNOWLEDGE AND BELIEF AND THAT THIS PLAT AND FIELD SURVEY UPON WHICH IT IS BASED MEET THE MINIMUM STANDARDS FOR SURVEYING IN NEW MEXICO. (RULE 500.6 EASEMENT SURVEYING)

*[Signature]*  
MICHAEL BLAKE BROWN, P.S. NO. 18329



				<b>BC OPERATING, INC.</b>	SCALE: 1" = 1000'
					DATE: NOVEMBER 20, 2009
NO.	REVISION	DATE	BY		JOB NO.: 151033-F
SURVEYED BY: H.V.					QUAD NO.: 24-NE
DRAWN BY: E.U.O.					
APPROVED BY: M.B.B.					
				<i>SURVEYING AND MAPPING BY</i> <b>TOPOGRAPHIC LAND SURVEYORS</b> <i>MIDLAND, TEXAS</i>	SHEET : 1 OF 1

LOCATION & ELEVATION VERIFICATION MAP



SCALE : 1" = 2000' CONTOUR INTERVAL 10'

SECTION 1 TWP 25-S RGE 28-E  
SURVEY NEW MEXICO PRINCIPAL MERIDIAN  
COUNTY EDDY STATE NM  
DESCRIPTION 990' FSL & 660' FEL  
ELEVATION 2905'

OPERATOR BC OPERATING, INC.  
LEASE RUSTLER BLUFF #7

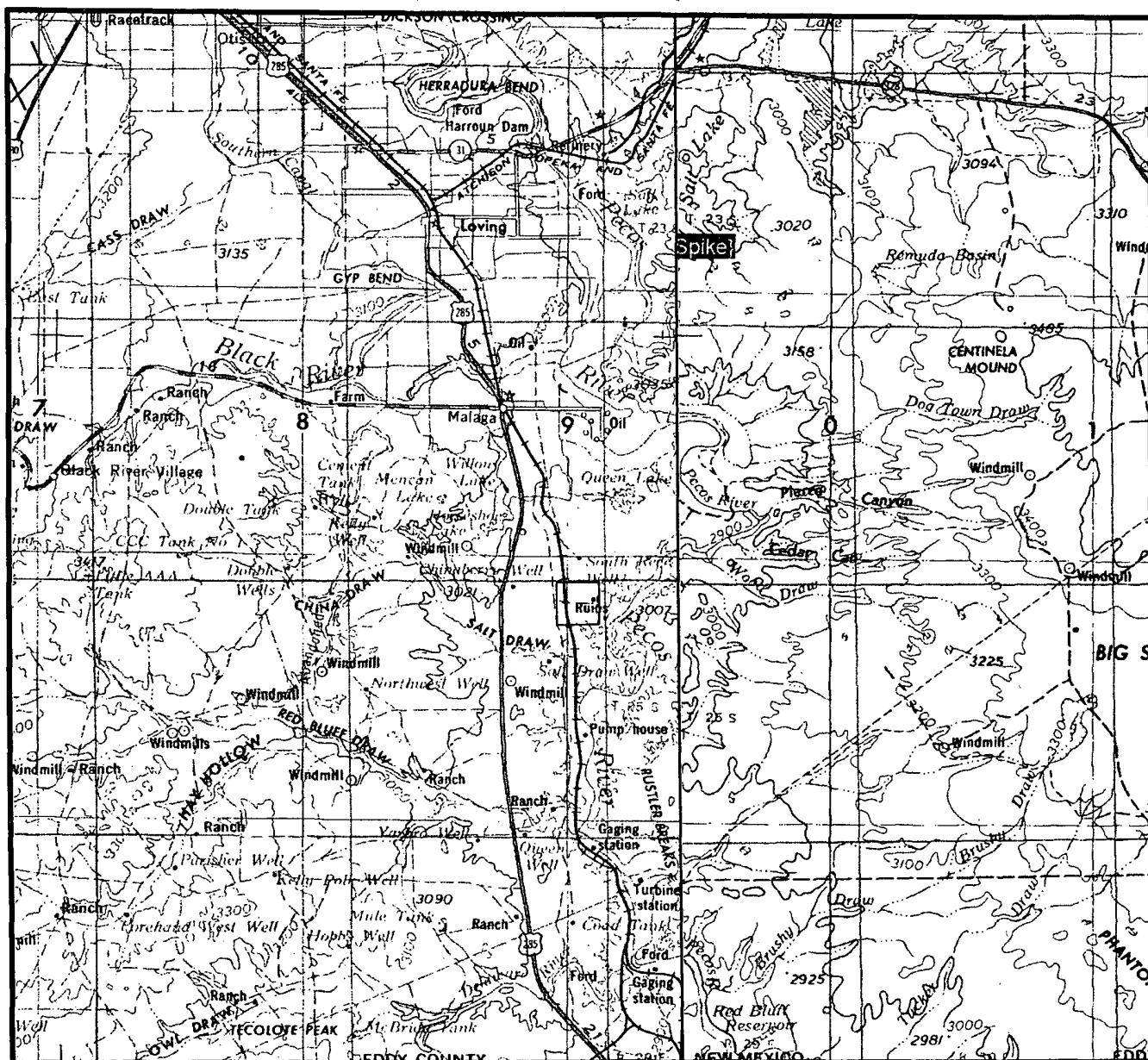
U.S.G.S. TOPOGRAPHIC MAP  
MALAGA, NEW MEXICO

SCALED LAT. LAT.: N 32°09'16.11"  
LONG. LONG.: W 104°02'02.09"

TOPOGRAPHIC LAND SURVEYORS  
Surveying & Mapping for the Oil & Gas Industry

2903 N. BIG SPRING  
MIDLAND, TX. 79705  
(800) 767-1653

# VICINITY MAP



SECTION 1 TWP 25-S RGE 28-E

SURVEY NEW MEXICO PRINCIPAL MERIDIAN

COUNTY EDDY STATE NM

DESCRIPTION 990' FSL & 660' FEL

OPERATOR BC OPERATING, INC.

LEASE RUSTLER BLUFF #7

DISTANCE & DIRECTION FROM MALAGA GO SOUTH 4.0

MILES ON HWY. 285, THENCE EAST 1.0 MILES ON LEASE

ROAD, THENCE SOUTH 0.5 MILES, THENCE EAST 1.2 MILES

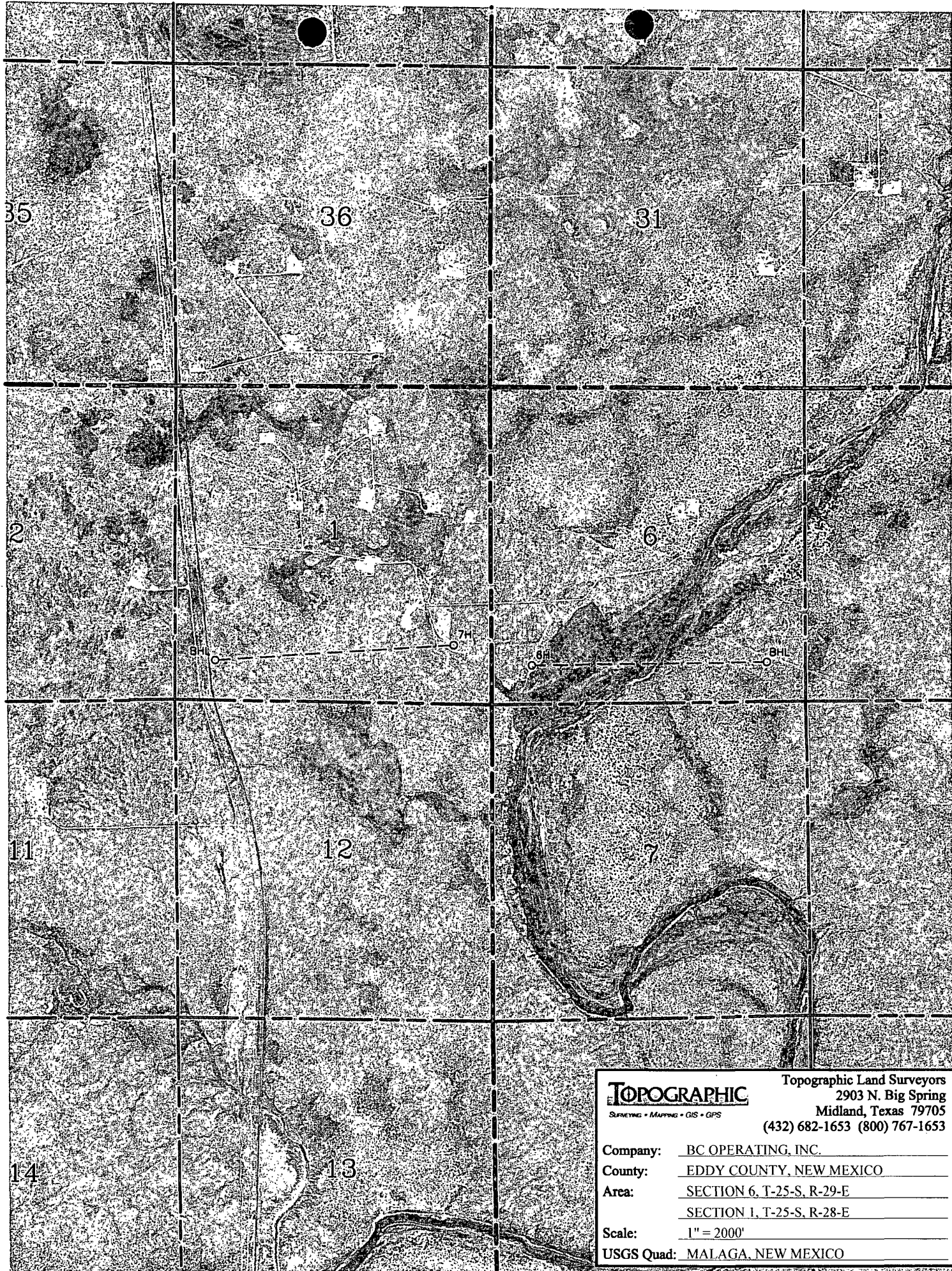
TO A POINT  $\pm 1000'$  NORTH OF THE LOCATION.



## TOPOGRAPHIC LAND SURVEYORS

Surveying & Mapping for the Oil & Gas Industry

2903 N. BIG SPRING  
MIDLAND, TX. 79705  
(800) 767-1653



**TOPOGRAPHIC**  
SURVEYING • MAPPING • GIS • GPS

Topographic Land Surveyors  
2903 N. Big Spring  
Midland, Texas 79705  
(432) 682-1653 (800) 767-1653

Company: BC OPERATING, INC.  
County: EDDY COUNTY, NEW MEXICO  
Area: SECTION 6, T-25-S, R-29-E  
SECTION 1, T-25-S, R-28-E  
Scale: 1" = 2000'  
USGS Quad: MALAGA, NEW MEXICO