

UNITED STATES
DEPARTMENT OF THE INTERIOR
BUREAU OF LAND MANAGEMENT

OCD-ARTESIA

FORM APPROVED
OMB No. 1004-0135
Expires: January 31, 2004**SUNDRY NOTICES AND REPORTS ON WELLS**
Do not use this form for proposals to drill or to re-enter an abandoned well. Use Form 3160-3 (APD) for such proposals.**SUBMIT IN TRIPLICATE - Other instructions on reverse side**

1. Type of Well

☒ Oil Well ☐ Gas Well ☐ Other

2. Name of Operator

Mewbourne Oil Company 14744

3a. Address

PO Box 5270 Hobbs, NM 88241

3b. Phone No. (include area code)

575-393-5905

4. Location of Well (Footage, Sec., T, R., M., or Survey Description)

2120' FSL & 415' FWL, Sec 27-T16S-R28E Unit Letter L (Surface)

2310' FSL & 330' FWL, Sec 28-T16S-R28E Unit Letter L (BHL)

5. Lease Serial No.

NM 83066

6. If Indian, Allottee or Tribe Name

7. If Unit or CA/Agreement, Name and/or No.

8. Well Name and No.

Crow Flats 28 Federal #3H

9. API Well No.

30-015-38269

10. Field and Pool, or Exploratory Area

Dog Canyon Wolfcamp

11. County or Parish, State

Eddy County, NM

12. CHECK APPROPRIATE BOX(ES) TO INDICATE NATURE OF NOTICE, REPORT, OR OTHER DATA

TYPE OF SUBMISSION

TYPE OF ACTION

☐ Notice of Intent☒ Subsequent Report☐ Final Abandonment Notice☐ Acidize☐ Alter Casing☐ Casing Repair☐ Change Plans☐ Convert to Injection☐ Deepen☐ Fracture Treat☐ New Construction☐ Plug and Abandon☐ Plug Back☐ Production (Start/Resume)☐ Reclamation☐ Recomplete☐ Temporarily Abandon☐ Water Disposal☐ Water Shut-Off☐ Well Integrity☐ Other Casing & cmt

3. Describe Proposed or Completed Operation (clearly state all pertinent details, including estimated starting date of any proposed work and approximate duration thereof. If the proposal is to deepen directionally or recompleat horizontally, give subsurface locations and measured and true vertical depths of all pertinent markers and zones. Attach the Bond under which the work will be performed or provide the Bond No. on file with BLM/BIA. Required subsequent reports shall be filed within 30 days following completion of the involved operations. If the operation results in a multiple completion or recompleat in a new interval, a Form 3160-4 shall be filed once testing has been completed. Final Abandonment Notices shall be filed only after all requirements, including reclamation, have been completed, and the operator has determined that the site is ready for final inspection.)

12/22/10...TD 8 3/4" hole at 7028'. Ran 7028' of 7" 26# P110 B/LT&C csg. Cemented with 1200 sks BJ Lite Class C (35:65:6) w/additives. Mixed @ 12.5 #/g w/ 2.10 yd. Tail w/400 sks Class C w/additives. Mixed @ 14.8 #/g w/ 1.33 yd. Plug down @ 4:00 am 12/22/10. Circ 37 sks cmt to pit. Set wellhead slips w/130k#. Tested casing spool pack-off to 3000#. On 12/22/10 tested BOPE to 3000# & annular to 1500#. At 2:30 pm 12/23/10, tested csg to 1500# for 30 minutes, held OK. Chart & schematic attached. Drilled out with 6 1/8" bit.

RECEIVED

JAN 12 2011

NMOCD ARTESIA

ACCEPTED FOR RECORD

JAN 9 2011

14. I hereby certify that the foregoing is true and correct

Name (Printed/Typed)

Jackie Lathan

Title Hobbs Regulatory

Signature

Date 12/28/10

BUREAU OF LAND MANAGEMENT
CARLSBAD FIELD OFFICE

THIS SPACE FOR FEDERAL OR STATE OFFICE USE

Approved by (Signature)

Name
(Printed/Typed)

Title

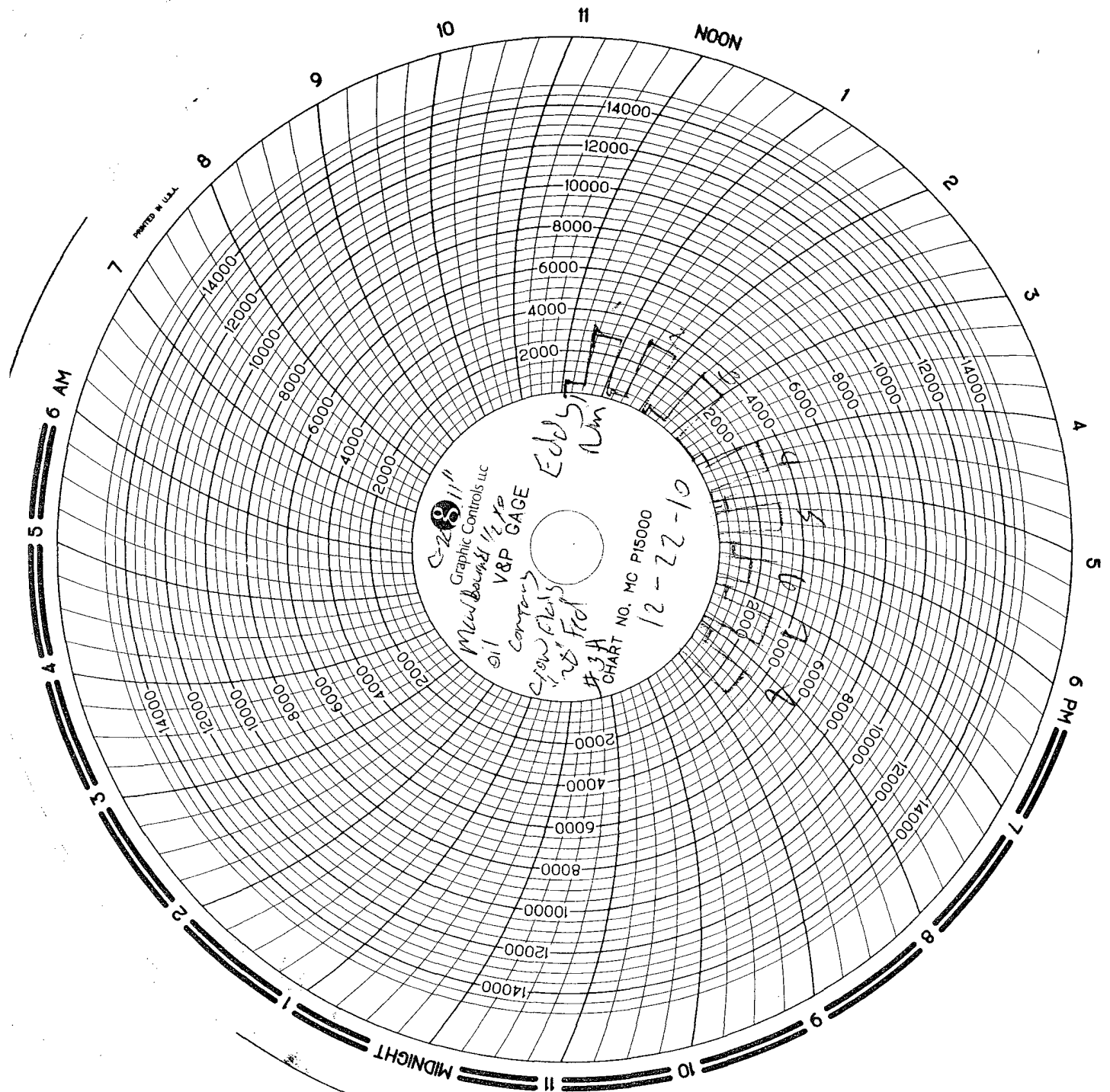
Conditions of approval, if any, are attached. Approval of this notice does not warrant or certify that the applicant holds legal or equitable title to those rights in the subject lease which would entitle the applicant to conduct operations thereon.

Office

Date

Title 18 U.S.C. Section 1001 and Title 43 U.S.C. Section 1212, make it a crime for any person knowingly and willfully to make to any department or agency of the United States any false, fictitious or fraudulent statements or representations as to any matter within its jurisdiction.

(Continued on next page)

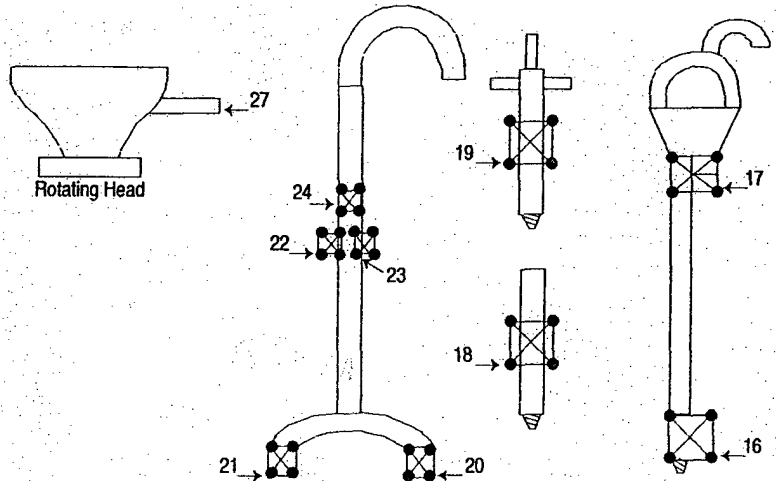
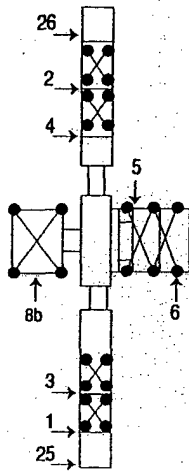
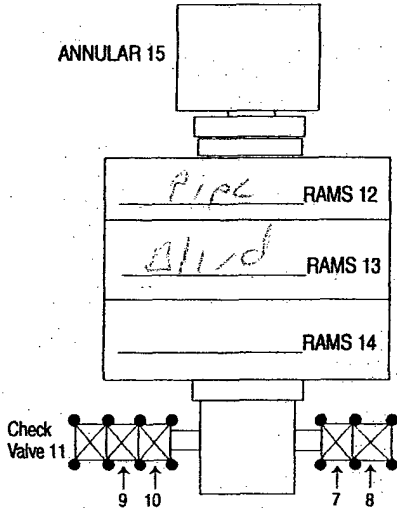




INVOICE

B 12083

ANNULAR 15

[illegible]

HR@

MASTER PRINTERS 575.396.3661

SUB TOTAL

TAX

TOTAL

MAN WELDING SERVICES, INC

Company Mew Dorrre oil Company Date 12-22-10

Lease Crow Flats "28" Fed #3H County Eddy NM

Drilling Contractor Patterson 46 Plug & Drill Pipe Size 1-22 7" 5 1/2 IF

Accumulator Function Test - OO&GO#2

To Check - USABLE FLUID IN THE NITROGEN BOTTLES (III.A.2.c.i. or ii or iii)

- Make sure all rams and annular are open and if applicable HCR is closed.
- Ensure accumulator is pumped up to working pressure! (Shut off all pumps)
 1. Open HCR Valve. (If applicable)
 2. Close annular.
 3. Close all pipe rams.
 4. Open one set of the pipe rams to simulate closing the blind ram.
 5. For 3 ram stacks, open the annular to achieve the 50+ % safety factor. (5M and greater systems).
 6. Record remaining pressure 1300 psi. Test Fails if pressure is lower than required.
 - a. {950 psi for a 1500 psi system} b. {1200 psi for a 2000 & 3000 psi system }
 7. If annular is closed, open it at this time and close HCR.

To Check - PRECHARGE ON BOTTLES OR SPHERICAL (III.A.2.d.)

- Start with manifold pressure at, or above, maximum acceptable pre-charge pressure:
 - a. {800 psi for a 1500 psi system} b. {1100 psi for 2000 and 3000 psi system}
- 1. Open bleed line to the tank, slowly. (gauge needle will drop at the lowest bottle pressure)
 2. Close bleed line. Barely bump electric pump and see what pressure the needle jumps up to.
 3. Record pressure drop 1100 psi. Test fails if pressure drops below minimum.
- Minimum: a. {700 psi for a 1500 psi system} b. {900 psi for a 2000 & 3000 psi system}

To Check - THE CAPACITY OF THE ACCUMULATOR PUMPS (III.A.2.f.)

- Isolate the accumulator bottles or spherical from the pumps & manifold.
- Open the bleed off valve to the tank, {manifold psi should go to 0 psi} close bleed valve.
 1. Open the HCR valve, {if applicable}
 2. Close annular
 3. With pumps only, time how long it takes to regain the required manifold pressure.
 4. Record elapsed time 1:40. Test fails if it takes over 2 minutes.
 - a. {950 psi for a 1500 psi system} b. {1200 psi for a 2000 & 3000 psi system}

SCARBROUGH, INC.

816 W. BYERS • P.O. BOX 1588
HOBBS, NEW MEXICO 88241
(575) 397-1312

ACCUMULATOR INSPECTION

COMPANY AND RIG Patterson 1071 Rig #46

DESCRIPTION Kompy Style 6 Station 14 Bottle

ACCUMULATOR PRECHARGE 1000 PSI

ACCUMULATOR OPERATING PRESSURE 300 PSI

MANIFOLD REGULATED OPERATING PRESSURE 1900 PSI

ANNULAR REGULATED PRESSURE 1700 PSI

ELECTRIC PUMP PRESSURE SWITCH SETTINGS 0-3m PSI,
AUTO OFF 2900 PSI AND AUTO ON 2650 PSI

LEAK CHECK (INTERNAL/RESERVOIR ✓), (EXTERNAL ✓)

STORAGE PRESSURE GALLONS (IN BOTTLES) 77

TANK GALLONS TOTAL 270

TOTAL TIME TO RE-CHARGE SYSTEM 10 mins 43 Sec.

NOTES filled all bottles to 1000 psi

low pressure activated jacking on

all air motor all systems operating

normal

DATE 12-1-10 INSPECTED BY M. Farnley