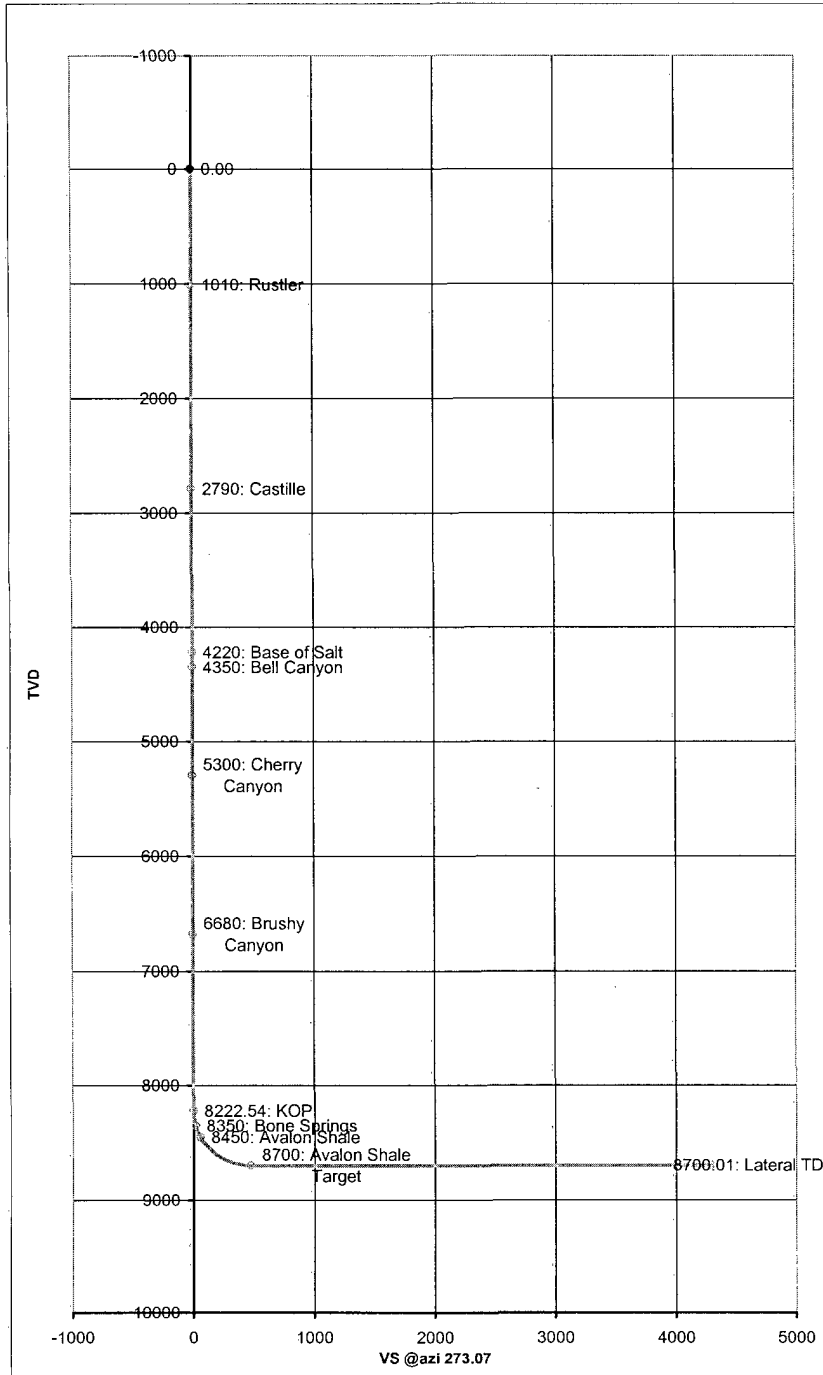


API 30-015-38419

Co: Yates Petroleum Corporation	Units: Feet, °, °/100ft	VS Az: 273.07	Tgt TVD: 8700.00
Drillers: 0	Elevation:	Tgt Radius: 0.00	Tgt MD: 0.00
Well Name: Coltrane BQR State Com. #1H	Northing:	Tgt N/S: 230.00	Tgt Displ.: 0.00
Location: Sect. 36, 25S-31E	Easting:	Tgt E/W: -4290.00	Method: Minimum Curvature

No	IMD	CL	Inc	Azi	TVD	VS	+N/S	+E/W	BR	WR	DLS	Comments
0	0.00	0.00	0.00	0.00	0.00	0.00	0.00	0.00	0.00	0.00	0.00	Rustler
1	1010.00	1010.00	0.00	360.00	1010.00	0.00	0.00	0.00	0.00	0.00	0.00	Castille
2	2790.00	1780.00	0.00	360.00	2790.00	0.00	0.00	0.00	0.00	0.00	0.00	Base of Salt
3	4220.00	1430.00	0.00	360.00	4220.00	0.00	0.00	0.00	0.00	0.00	0.00	Bell Canyon
4	4350.00	130.00	0.00	360.00	4350.00	0.00	0.00	0.00	0.00	0.00	0.00	Cherry Canyon
5	5300.00	950.00	0.00	360.00	5300.00	0.00	0.00	0.00	0.00	0.00	0.00	Brushy Canyon
6	6680.00	1380.00	0.00	360.00	6680.00	0.00	0.01	0.00	0.00	0.00	0.00	KOP
7	8222.54	8222.54	0.00	273.07	8222.54	0.00	0.01	0.00	0.00	-1.06	0.00	
8	8300.00	77.46	9.30	273.07	8299.66	6.27	0.34	-6.26	12.00	0.00	12.00	
9	8351.56	129.03	15.48	273.07	8350.00	17.33	0.93	-17.30	12.00	0.00	12.00	Bone Springs
10	8400.00	48.44	21.30	273.07	8395.94	32.60	1.75	-32.56	12.00	0.00	12.00	
11	8459.63	108.07	28.45	273.07	8450.00	57.67	3.09	-57.58	12.00	0.00	12.00	Avalon Shale
12	8500.00	40.37	33.30	273.07	8484.64	78.38	4.20	-78.26	12.00	0.00	12.00	
13	8600.00	100.00	45.30	273.07	8561.89	141.59	7.59	-141.39	12.00	0.00	12.00	
14	8700.00	100.00	57.30	273.07	8624.31	219.49	11.76	-219.17	12.00	0.00	12.00	
15	8800.00	100.00	69.30	273.07	8669.16	308.66	16.53	-308.22	12.00	0.00	12.00	
16	8900.00	100.00	81.30	273.07	8694.50	405.21	21.70	-404.63	12.00	0.00	12.00	
17	8972.53	750.00	90.00	273.07	8700.00	477.46	25.57	-476.78	12.00	0.00	12.00	Avalon Shale Target
18	12791.23	3818.70	90.00	273.07	8700.01	4296.16	230.01	-4290.00	0.00	0.00	0.00	Lateral TD

RECEIVED
 JAN 18 2011
 NMOCD ARTESIA



RECEIVED
JAN 18 2011
NMOCD ARTESIA

