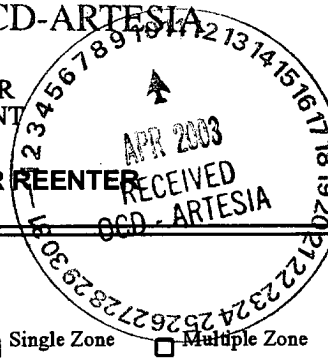


OCD-ARTESIA

FORM APPROVED  
OMB No. 1004-0136  
Expires November 30, 2000

UNITED STATES  
DEPARTMENT OF THE INTERIOR  
BUREAU OF LAND MANAGEMENT

APPLICATION FOR PERMIT TO DRILL OR REENTER



1a. Type of Work: <input checked="" type="checkbox"/> DRILL <input type="checkbox"/> REENTER		5. Lease Serial No. NMLC029395B
1b. Type of Well: <input checked="" type="checkbox"/> Oil Well <input type="checkbox"/> Gas Well <input type="checkbox"/> Other <input checked="" type="checkbox"/> Single Zone <input type="checkbox"/> Multiple Zone		6. If Indian, Allottee or Tribe Name
2. Name of Operator MARBOB ENERGY CORPORATION Contact: DIANA CANNON E-Mail: production@marbob.com		7. If Unit or CA Agreement, Name and No. 23240
3a. Address P O BOX 227 ARTESIA, NM 88211-0227 14049	3b. Phone No. (include area code) Ph: 505.748.3303 Fx: 505.746.2523	8. Lease Name and Well No. LEE FEDERAL 34
4. Location of Well (Report location clearly and in accordance with any State requirements. *) At surface SWSW Lot M 330FSL 890FWL At proposed prod. zone SWSW Lot M 330FSL 890FWL lin orthodoxy location		9. API Well No. 30-015-32738
14. Distance in miles and direction from nearest town or post office* SEE SURFACE USE PLAN Subject to like approval by NMCA		10. Field and Pool, or Exploratory LOCO HILLS-PADDOCK
15. Distance from proposed location to nearest property or lease line, ft. (Also to nearest drig. unit line, if any) 330'	16. No. of Acres in Lease 1786.15	11. Sec., T., R., M., or Bk. and Survey or Area Sec 17 T17S R31E Mer NMP
18. Distance from proposed location to nearest well, drilling, completed, applied for, on this lease, ft.	19. Proposed Depth 6000 MD	12. County or Parish EDDY
21. Elevations (Show whether DF, KB, RT, GL, etc.) 3675 GL	22. Approximate date work will start 03/31/2003	13. State NM
23. Estimated duration		17. Spacing Unit dedicated to this well 40.00
20. BLM/BIA Bond No. on file		

24. Attachments Roswell Controlled Water Basin

The following, completed in accordance with the requirements of Onshore Oil and Gas Order No. 1, shall be attached to this form:

- |   |  |
|---|--|
| 1. Well plat certified by a registered surveyor.  | 4. Bond to cover the operations unless covered by an existing bond on file (see Item 20 above).    |
| 2. A Drilling Plan.   | 5. Operator certification  |
| 3. A Surface Use Plan (if the location is on National Forest System Lands, the SUPO shall be filed with the appropriate Forest Service Office). | 6. Such other site specific information and/or plans as may be required by the authorized officer. |

25. Signature (Electronic Submission)	Name (Printed/Typed) DIANA CANNON	Date 02/21/2003
Title AUTHORIZED REPRESENTATIVE		
Approved by (Signature) /s/ LESLIE A. THEISS	Name (Printed/Typed) /s/ LESLIE A. THEISS	Date APR 08 2003
Title Field Manager	Office Carlsbad Field Office	

Application approval does not warrant or certify the applicant holds legal or equitable title to those rights in the subject lease which would entitle the applicant to conduct operations thereon.  
Conditions of approval, if any, are attached.

Approval for 1 year

Title 18 U.S.C. Section 1001 and Title 43 U.S.C. Section 1212, make it a crime for any person knowingly and willfully to make to any department or agency of the United States any false, fictitious or fraudulent statements or representations as to any matter within its jurisdiction.

Additional Operator Remarks (see next page)

Electronic Submission #18805 verified by the BLM Well Information System  
For MARBOB ENERGY CORPORATION, sent to the Carlsbad  
Committed to AFMSS for processing by Armando Lopez on 02/24/2003 (03AL0155AE)

Approval Subject to  
General Requirements and  
Special Stipulations  
Attached

Witness Surface casing

\*\* REVISED \*\* REVISED \*\* REVISED \*\* REVISED \*\* REVISED \*\* REVISED \*\* REVISED \*\* REVISED \*\*

**Additional Operator Remarks:**

17 1/2" HOLE, 13 3/8" 48# H40 CSG SET @ 350', CMT W/ 350 SX  
12 1/4" HOLE, 8 5/8" 24# J55 CSG SET @ 1300', CMT W/ 550 SX  
7 7/8" HOLE, 5 1/2" 17# J55 CSG SET @ 6000', CMT SUFFICIENT TO COVER 200' ABOVE ALL KNOWN OIL & GAS HORIZONS.

PRESSURE CONTROL EQUIPMENT: WE WILL BE USING A 2M SYSTEM. SEE EXHIBIT #1 (4 PGS)

PAY ZONE WILL BE SELECTIVELY PERFORATED AND STIMULATED AS NEEDED FOR OPTIMUM PRODUCTION.

ATTACHMENT INCLUDES:

1. WELL LOCATION AND ACREAGE DEDICATION PLAT
2. DRILLING PROGRAM
3. SURFACE USE AND OPERATING PLAN
4. HYDROGEN SULFIDE DRILLING OPERATIONS PLAN
5. ADDITIONAL REQUIRED INFORMATION (EXHIBITS #1 (4 PGS), #2, #3 & #4)

DISTRICT I  
P.O. Box 1880, Hobbs, NM 88241-1880

State of New Mexico  
Energy, Minerals and Natural Resources Department

JAN 16 2003  
Form C-102  
Revised February 10, 1994  
Submit to Appropriate District Office  
State Lease - 4 Copies  
Fee Lease - 3 Copies

DISTRICT II  
P.O. Drawer 22, Artesia, NM 88211-0718

OIL CONSERVATION DIVISION  
P.O. Box 2088  
Santa Fe, New Mexico 87504-2088

DISTRICT III  
1000 Rio Brazos Rd., Aztec, NM 87410

DISTRICT IV  
P.O. Box 2088, SANTA FE, N.M. 87504-2088

WELL LOCATION AND ACREAGE DEDICATION PLAT

☐ AMENDED REPORT

API Number	Pool Code	Pool Name
30-015-	96718	LOCO HILLS Paddock
Property Code	Property Name	Well Number
23300	LEE FEDERAL	34
OGRID No.	Operator Name	Elevation
14049	MARBOB ENERGY CORPORATION	3675'

Surface Location

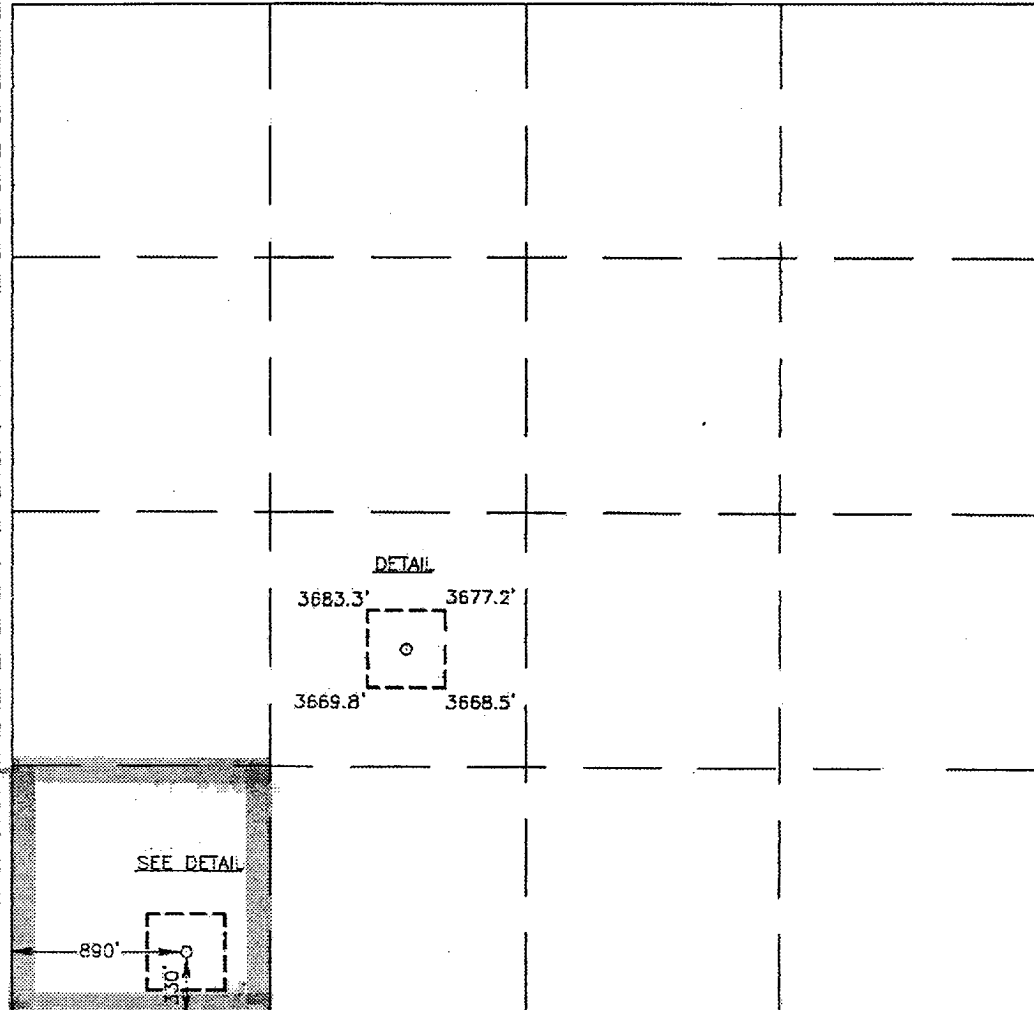
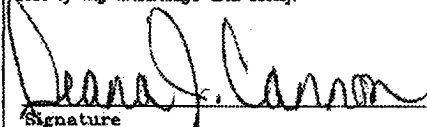
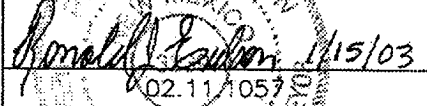
UL or lot No.	Section	Township	Range	Lot Idn	Feet from the	North/South line	Feet from the	East/West line	County
M	17	17-S	31-E		330	SOUTH	890	WEST	EDDY

Bottom Hole Location If Different From Surface

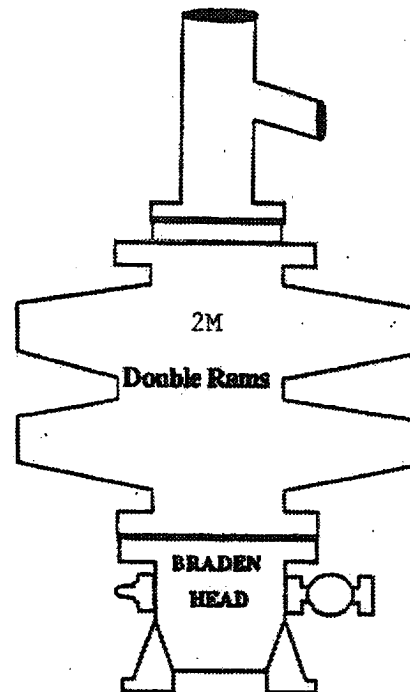
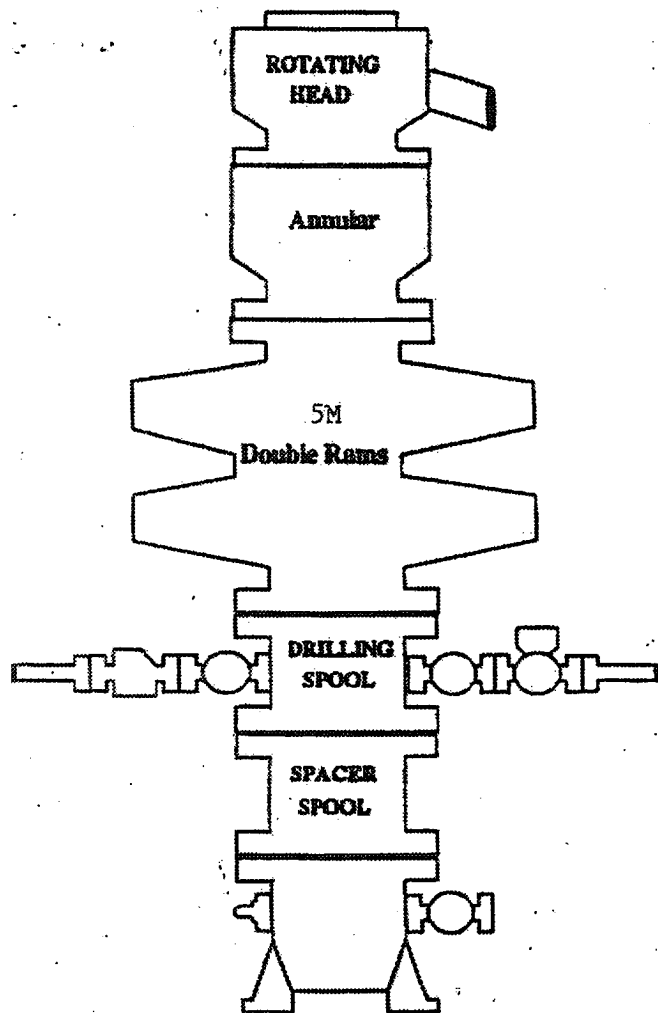
UL or lot No.	Section	Township	Range	Lot Idn	Feet from the	North/South line	Feet from the	East/West line	County

Dedicated Acres	Joint or Infill	Consolidation Code	Order No.
40			

NO ALLOWABLE WILL BE ASSIGNED TO THIS COMPLETION UNTIL ALL INTERESTS HAVE BEEN CONSOLIDATED  
OR A NON-STANDARD UNIT HAS BEEN APPROVED BY THE DIVISION

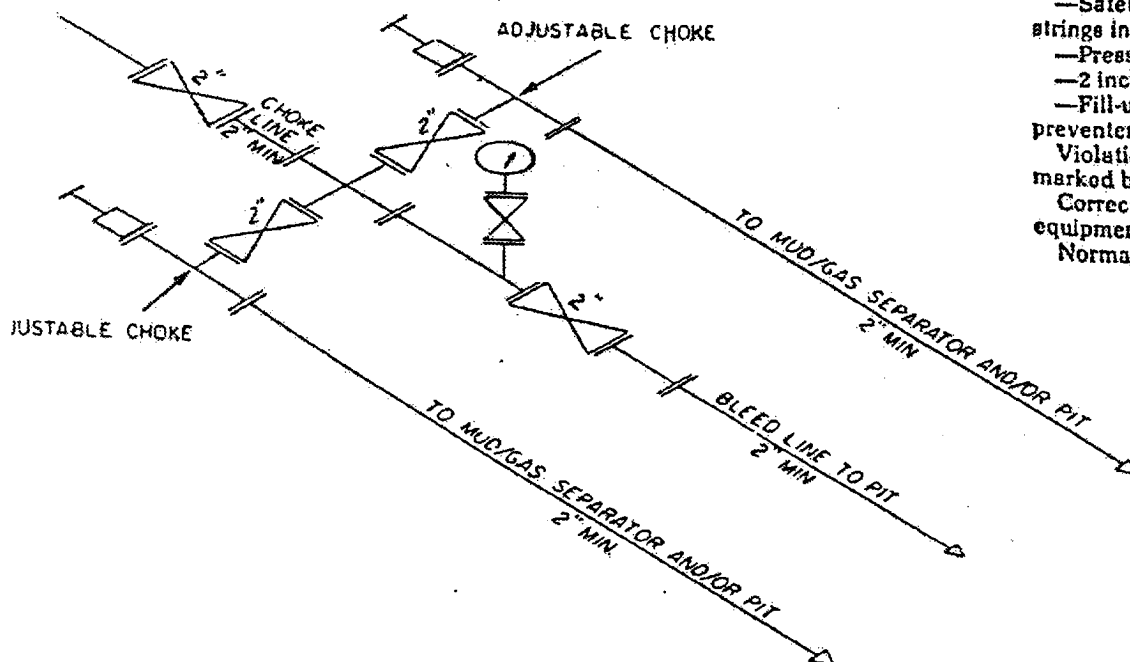
				<b>OPERATOR CERTIFICATION</b>  I hereby certify the the information contained herein is true and complete to the best of my knowledge and belief.   Signature  DIANA J. CANNON Printed Name  PRODUCTION ANALYST Title  FEBRUARY 21, 2003 Date	
				<b>SURVEYOR CERTIFICATION</b>  I hereby certify that the well location shown on this plat was plotted from field notes of actual surveys made by me or under my supervision, and that the same is true and correct to the best of my belief.  JANUARY 14, 2003 Date Surveyed   Signature and Seal of Professional Surveyor  RONALD J. EDSON Certificate No. 3239 GARY EDSON 12641	

# BOPE SCHEMATIC



ONSHORE OIL AND GAS ORDER NO. 2

- 2M system:
- Annular preventer, or, double ram, or two rams with one being blind and one being a pipe ram \*
  - Kill line (2 inch minimum)
  - 1 kill line valve (2 inch minimum)
  - 1 choke line valve
  - 2 chokes (refer to diagram in Attachment 1)
  - Upper kelly cock valve with handle available
  - Safety valve and subs to fit all drill strings in use
  - Pressure gauge on choke manifold
  - 2 inch minimum choke line
  - Fill-up line above the uppermost preventer.
- Violation: Minor (all items unless marked by asterisk).  
 Corrective Action: Install the equipment as specified.  
 Normal Abatement Period: 24 hours.



2M CHOKE MANIFOLD EQUIPMENT — CONFIGURATION OF CHOKES

MAY VARY

Exhibit One