

District I  
1625 N. French Dr., Hobbs, NM 88240  
District II  
1301 W. Grand Avenue, Artesia, NM 88210  
District III  
1000 Rio Brazos Road, Aztec, NM 87410  
District IV  
1220 S. St. Francis Dr., Santa Fe, NM 87505

State of New Mexico  
Energy Minerals and Natural Resources

Form C-101  
June 16, 2008

Oil Conservation Division  
1220 South St. Francis Dr.  
Santa Fe, NM 87505

Submit to appropriate District Office

☐ AMENDED REPORT

**APPLICATION FOR PERMIT TO DRILL, RE-ENTER, DEEPEN, PLUGBACK, OR ADD A ZONE**

<sup>1</sup> Operator Name and Address Yates Petroleum Corporation 105 South Fourth Street Artesia, NM 88210		<sup>2</sup> OGRID Number 025575
		<sup>3</sup> API Number 30 - 015 - 28003
<sup>4</sup> Property Code 34689	<sup>5</sup> Property Name NDDUP Unit	<sup>6</sup> Well No. 118
<sup>9</sup> Proposed Pool 1 N. Seven Rivers; Glorieta-Yeso		<sup>10</sup> Proposed Pool 2

<sup>7</sup> Surface Location

UL or lot no.	Section	Township	Range	Lot Idn	Feet from the	North/South line	Feet from the	East/West line	County
J	28	19S	25E		1980	South	1980	East	Eddy

<sup>8</sup> Proposed Bottom Hole Location If Different From Surface

UL or lot no.	Section	Township	Range	Lot Idn	Feet from the	North/South line	Feet from the	East/West line	County

Additional Well Information

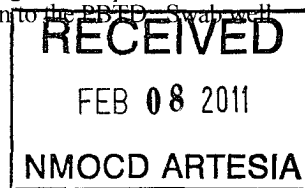
<sup>11</sup> Work Type Code P	<sup>12</sup> Well Type Code O	<sup>13</sup> Cable/Rotary N/A	<sup>14</sup> Lease Type Code P	<sup>15</sup> Ground Level Elevation 3470'GL
<sup>16</sup> Multiple N	<sup>17</sup> Proposed Depth N/A	<sup>18</sup> Formation Cisco	<sup>19</sup> Contractor N/A	<sup>20</sup> Spud Date N/A

<sup>21</sup> Proposed Casing and Cement Program

Hole Size	Casing Size	Casing weight/foot	Setting Depth	Sacks of Cement	Estimated TOC
<b>IN PLACE</b>					

<sup>22</sup> Describe the proposed program. If this application is to DEEPEN or PLUG BACK, give the data on the present productive zone and proposed new productive zone. Describe the blowout prevention program, if any. Use additional sheets if necessary.

Yates Petroleum Corporation plans to plugback and recompleat this well as follows: MIRU any safety equipment as needed. Make a GR/JB run to 7556' and cap it with 35' cement. Spot a 35 sx Class "H" cement plug from 5982'-6162' across the Wolfcamp top. Spot a 35 sx Class "C" cement plug from 3745'-3945' across the Bone Spring top. WOC and pressure test the casing to 3500 psi. Perforate Yeso 2440'-2485' (41). Stimulate as needed. Flow the well back and allow the well to clean up. Wash sand down to the PBTD. Swap well until it cleans up then TIH with pumping equipment and turn well to production.



<sup>23</sup> I hereby certify that the information given above is true and complete to the best of my knowledge and belief.

Signature: *Tina Huerta*

Printed name: Tina Huerta

Title: Regulatory Compliance Supervisor

E-mail Address: tinah@yatespetroleum.com

Date: February 8, 2011

Phone: 575-748-4168

OIL CONSERVATION DIVISION

Approved by:

*Jacqui Reem*  
Geologist

Title:

Approval Date: 2/8/2011

Expiration Date: 2/8/2013

Conditions of Approval Attached ☐

MS

WELL NAME: NDDUP Unit #118

FIELD: Dagger Draw

LOCATION: 1,980 FSL & 1,980' FEL of Section 28-19S-25E Eddy Co., NM

GL: 3,470' ZERO: KB:

SPUD DATE: 6/27/94 COMPLETION DATE: 9/13/94

COMMENTS: API No.: 30-015-28003

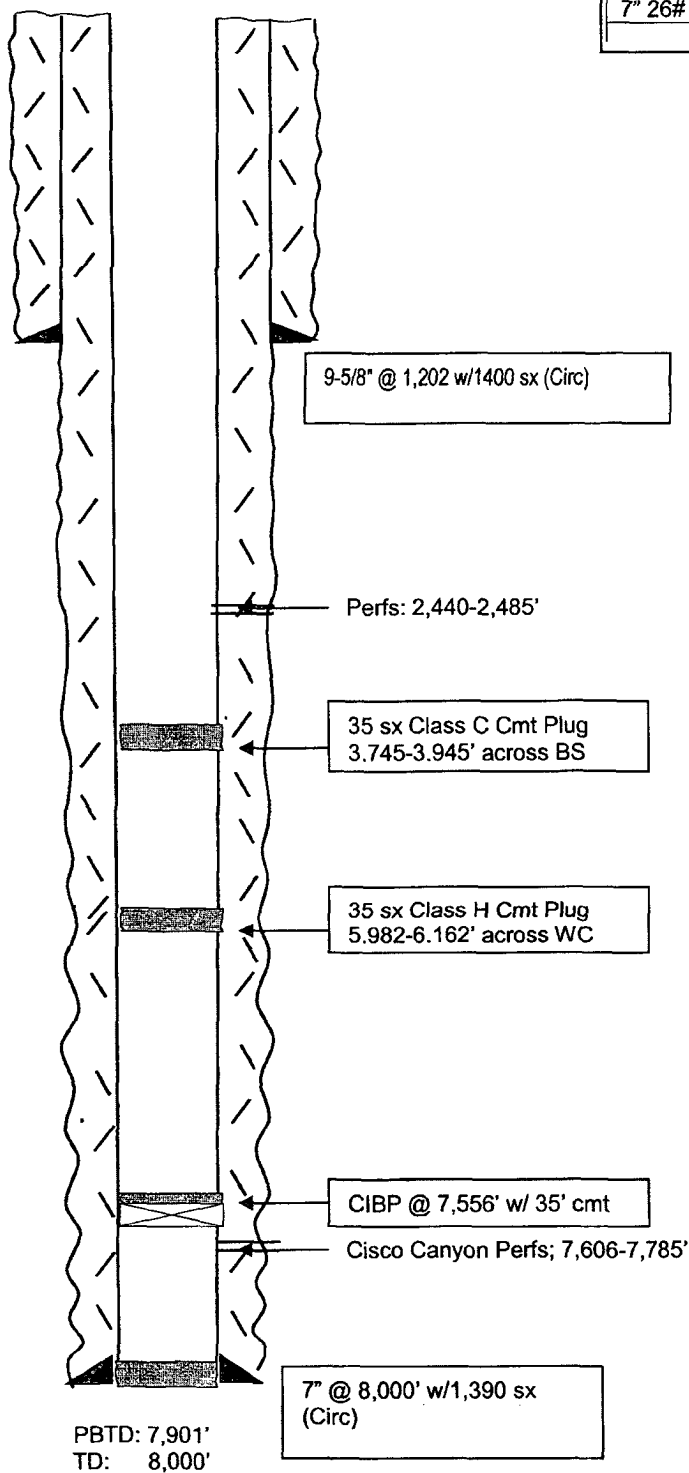
(Formerly Tackitt AOT #2)

#### CASING PROGRAM

9-5/8" 36# J-55	1,202'
7" 23# K-55 (5000)	
7" 26# K-55 (3200)	8,200

14-3/4" Hole

8-3/4" Hole



**After**

#### TOPS

SA	1,270'
Glorieta	2,291'
BS	3,895'
WC	6,112'
Cisco	7,552'

RECEIVED

FEB 08 2011

NMOCD ARTESIA

Not to Scale

8/6/10  
DC/Hill