

DISTRICT I
1625 N. FRENCH DR., HOBBS, NM 88240

State of New Mexico
Energy, Minerals and Natural Resources Department

DISTRICT II
1301 W. GRAND AVENUE, ARTESIA, NM 88210

DISTRICT III
1000 Rio Brazos Rd., Aztec, NM 87410

DISTRICT IV
1220 S. ST. FRANCIS DR., SANTA FE, NM 87505

OIL CONSERVATION DIVISION
1220 SOUTH ST. FRANCIS DR.
Santa Fe, New Mexico 87505

Form C-102
Revised October 12, 2005
Submit to Appropriate District Office
State Lease - 4 Copies
Fee Lease - 3 Copies

WELL LOCATION AND ACREAGE DEDICATION PLAT

☐ AMENDED REPORT

API Number 30-015-38500	Pool Code WC	Pool Name -BONE SPRING
Property Code 38510	Property Name SIDEWINDER	Well Number 1H
OGRID No. 217955	Operator Name OGX RESOURCES	Elevation 2889'

Surface Location

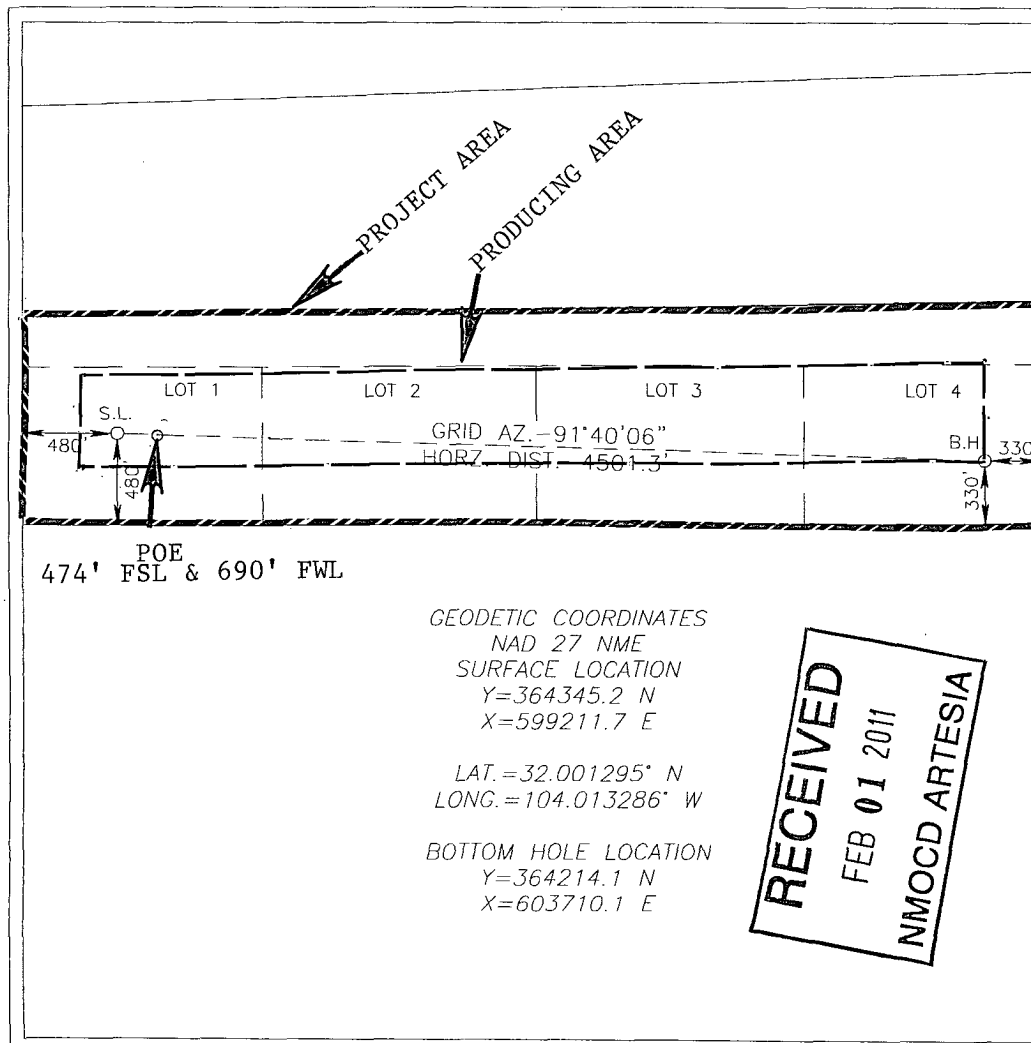
UL or lot No.	Section	Township	Range	Lot Idn	Feet from the	North/South line	Feet from the	East/West line	County
1	32	26-S	29-E		480	SOUTH	480	WEST	EDDY

Bottom Hole Location If Different From Surface

UL or lot No.	Section	Township	Range	Lot Idn	Feet from the	North/South line	Feet from the	East/West line	County
4	32	26-S	29-E		330	SOUTH	330	EAST	EDDY

Dedicated Acres 138	Joint or Infill	Consolidation Code	Order No.
-------------------------------	-----------------	--------------------	-----------

NO ALLOWABLE WILL BE ASSIGNED TO THIS COMPLETION UNTIL ALL INTERESTS HAVE BEEN CONSOLIDATED
OR A NON-STANDARD UNIT HAS BEEN APPROVED BY THE DIVISION

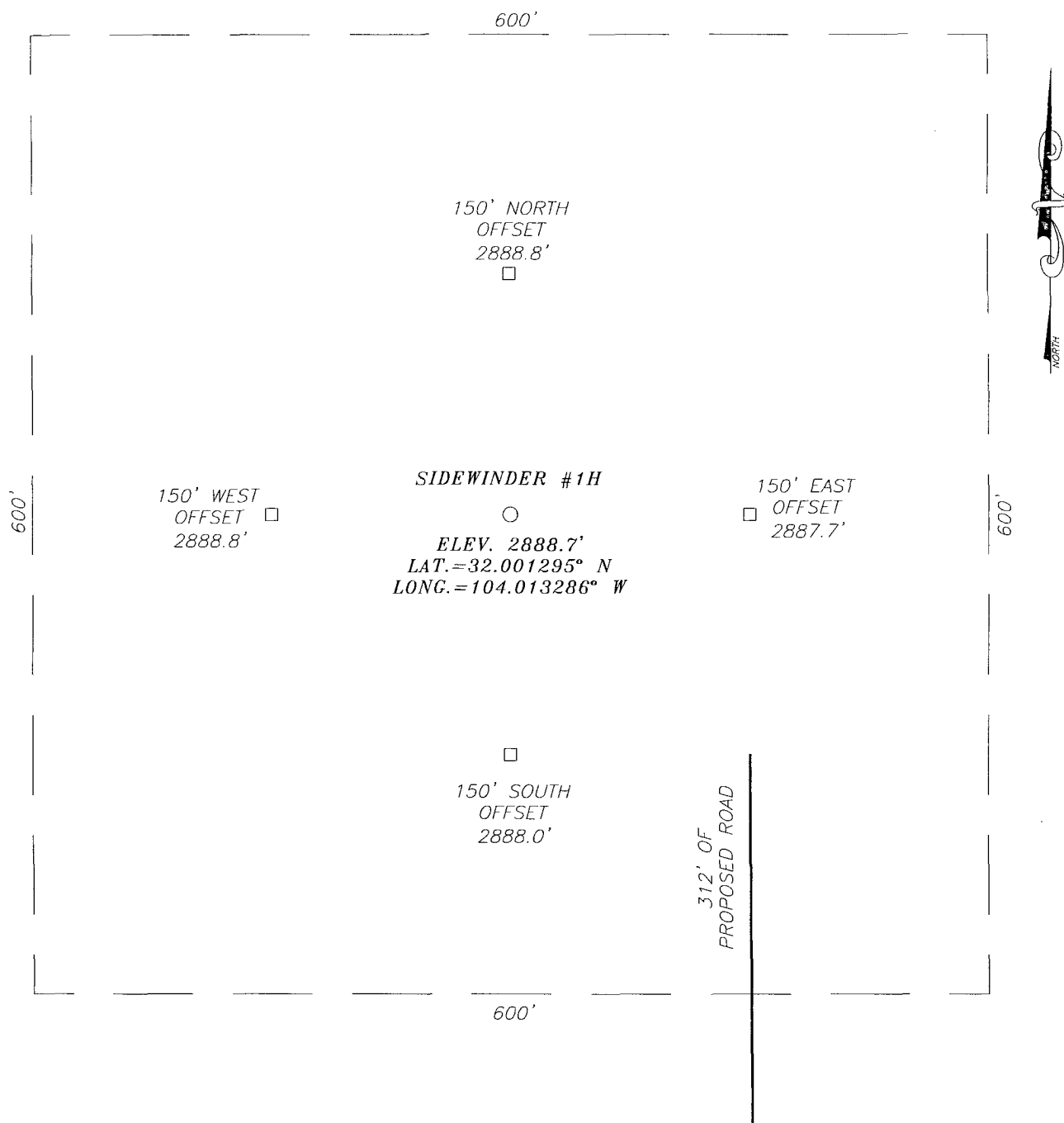


OPERATOR CERTIFICATION <i>I hereby certify that the information herein is true and complete to the best of my knowledge and belief, and that this organization either owns a working interest or unleased mineral interest in the land including the proposed bottom hole location or has a right to drill this well at this location pursuant to a contract with an owner of such mineral or working interest, or to a voluntary pooling agreement or a compulsory pooling order heretofore entered by the division.</i> Signature Date Joe T. Janica 01/31/11 Printed Name	
SURVEYOR CERTIFICATION <i>I hereby certify that the well location shown on this plat was plotted from field notes of actual surveys made by me or under my supervision, and that the same is true and correct to the best of my belief.</i> JANUARY 3, 2011 Date Surveyed LA Signature & Seal of Professional Surveyor Certificate No. GARY EIDSON 12641 RONALD J. EIDSON 3239	

SECTION 32, TOWNSHIP 26 SOUTH, RANGE 29 EAST, N.M.P.M.,

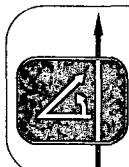
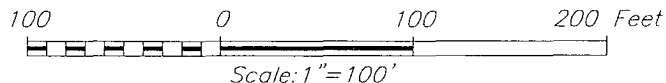
EDDY COUNTY,

NEW MEXICO



DIRECTIONS TO LOCATION

FROM THE INTERSECTION OF US. HWY. #285 AND
CO. RD. #726 (CATFISH) GO EAST ON CATFISH ROAD
FOR APPROX. 1.1 MILES TO A PROPOSED ROAD
SURVEY. FOLLOW ROAD SURVEY 312 FEET NORTH TO
THIS LOCATION.



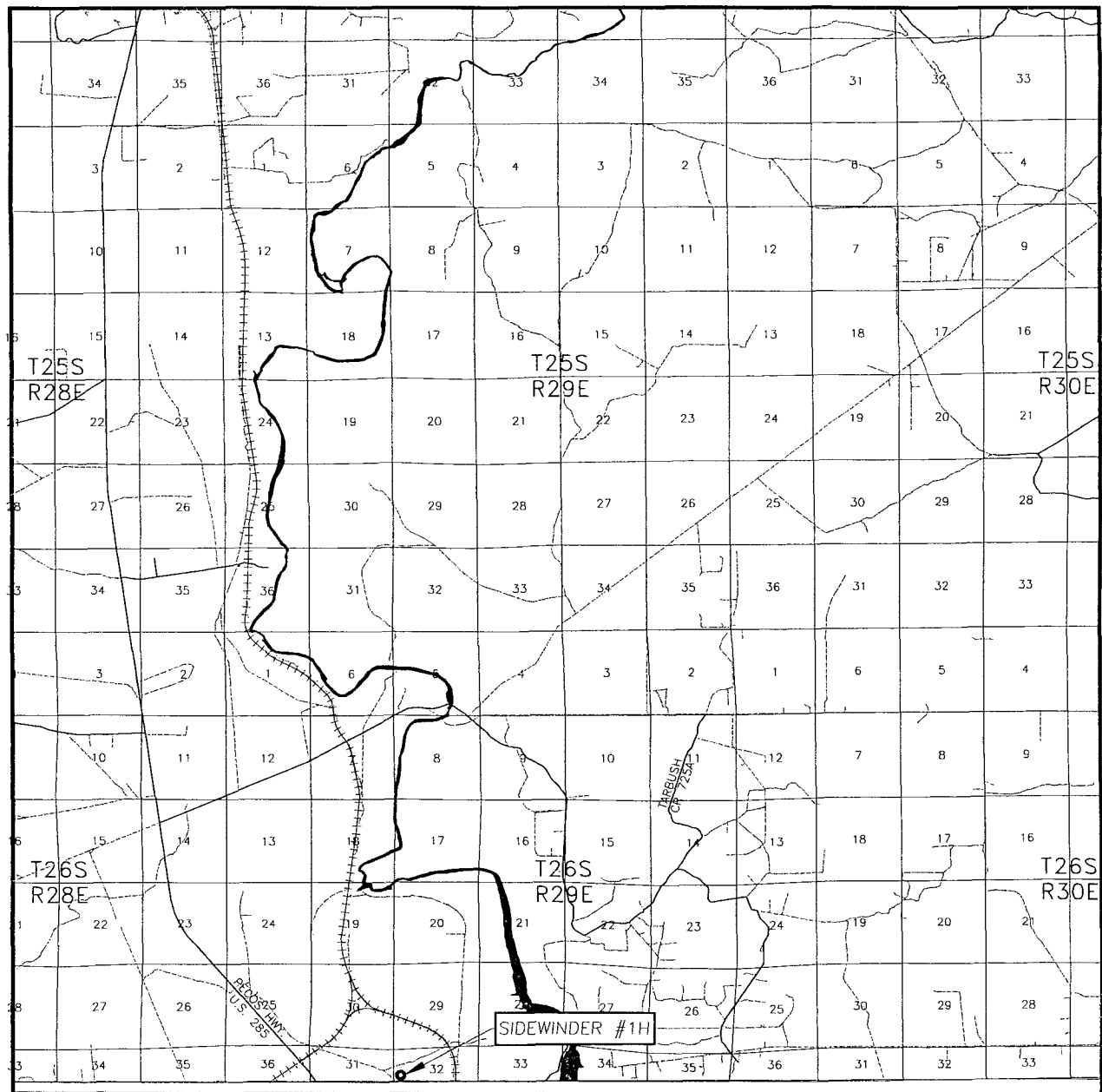
PROVIDING SURVEYING SERVICES
SINCE 1946
JOHN WEST SURVEYING COMPANY
412 N. DAL PASO
HOBBS, N.M. 88240
(575) 393-3117

OGX RESOURCES

SIDEWINDER #1H
LOCATED 480 FEET FROM THE SOUTH LINE
AND 480 FEET FROM THE WEST LINE OF SECTION 32,
TOWNSHIP 26 SOUTH, RANGE 29 EAST, N.M.P.M.,
EDDY COUNTY, NEW MEXICO.

Survey Date: 1/3/11		Sheet 1 of 1 Sheets	
W.O. Number: 10.11.1938		Dr By: LA	Rev 1:
Date: 1/10/11		10111938	Scale: 1"=100'

VICINITY MAP



SCALE: 1" = 2 MILES

SEC. 32 TWP. 26-S RGE. 29-E

SURVEY N.M.P.M.

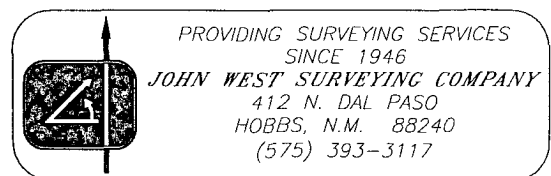
COUNTY EDDY STATE NEW MEXICO

DESCRIPTION 480' FSL & 480' FWL

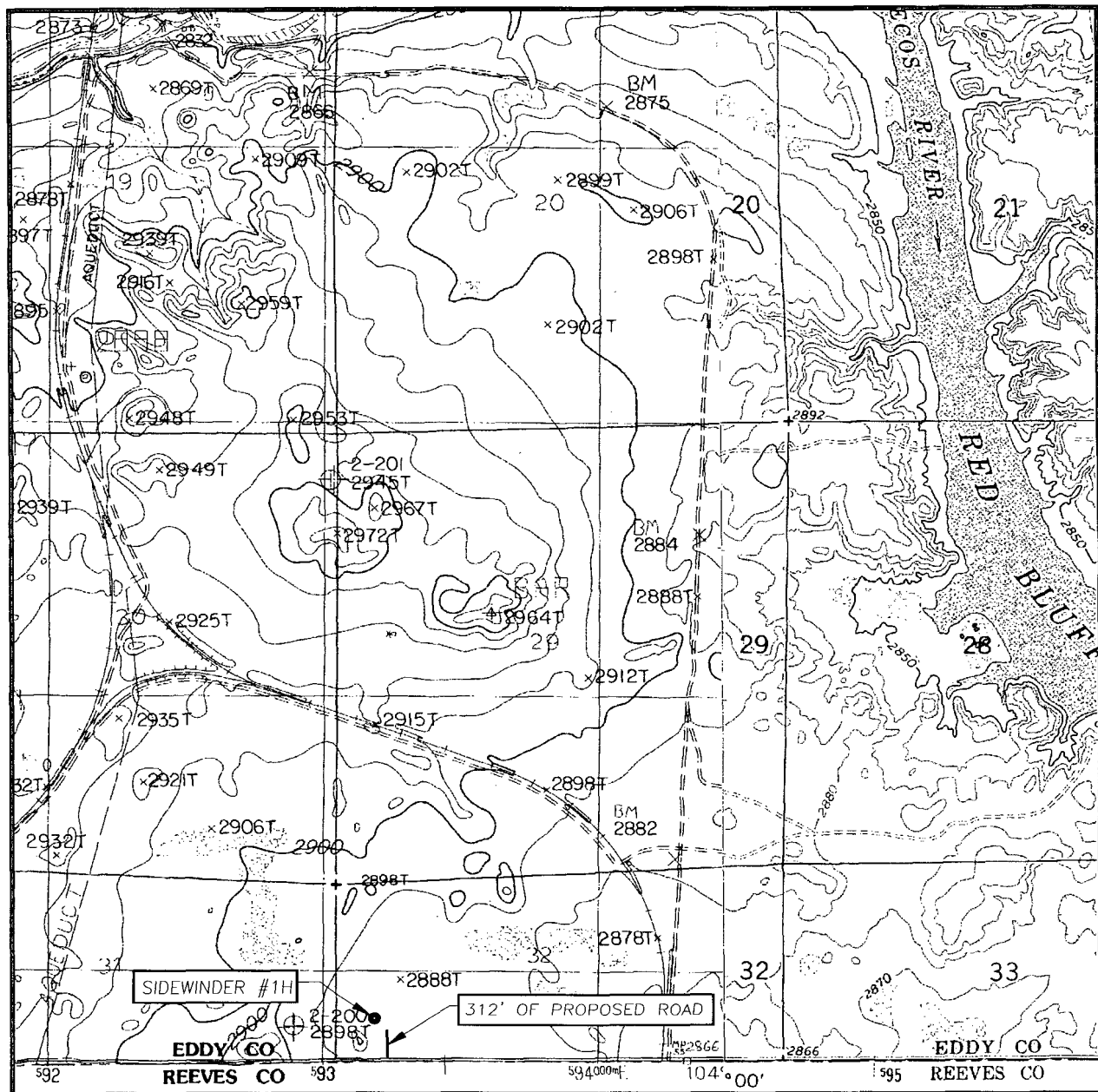
ELEVATION 2889'

OPERATOR OGX RESOURCES

LEASE SIDEWINDER



LOCATION VERIFICATION MAP



SCALE: 1" = 2000'

CONTOUR INTERVAL:
RED BLUFF, N.M. - 10'

SEC. 32 TWP. 26-S RGE. 29-E

SURVEY N.M.P.M.

COUNTY EDDY STATE NEW MEXICO


DESCRIPTION 480' FSL & 480' FWL

ELEVATION 2889'

OPERATOR OGX RESOURCES

LEASE SIDEWINDER

U.S.G.S. TOPOGRAPHIC MAP
RED BLUFF, N.M.



PROVIDING SURVEYING SERVICES
SINCE 1946
JOHN WEST SURVEYING COMPANY
412 N. DAL PASO
HOBBS, N.M. 88240
(575) 393-3117