

DISTRICT I
1625 N. FRENCH DR., HOBBS, NM 88240

DISTRICT II
1301 W. GRAND AVENUE, ARTESIA, NM 88210

DISTRICT III
1000 Rio Brazos Rd., Aztec, NM 87410

DISTRICT IV
1220 S. ST. FRANCIS DR., SANTA FE, NM 87505

State of New Mexico
Energy, Minerals and Natural Resources Department

OIL CONSERVATION DIVISION
1220 SOUTH ST. FRANCIS DR.
Santa Fe, New Mexico 87505

Form C-102
Revised October 12, 2005
Submit to Appropriate District Office
State EDDYse - 4 Copies
Fee EDDYse - 3 Copies

WELL LOCATION AND ACREAGE DEDICATION PLAT

☐ AMENDED REPORT

API Number 30-015-36372	Pool Code 96855	Pool Name Willow Lake, Delaware SW
Property Code 308286	Property Name REALLY SCARY FEDERAL	Well Number 3H
OGRID No. 229137	Operator Name COG OPERATING, LLC	Elevation 3006'

Surface Location

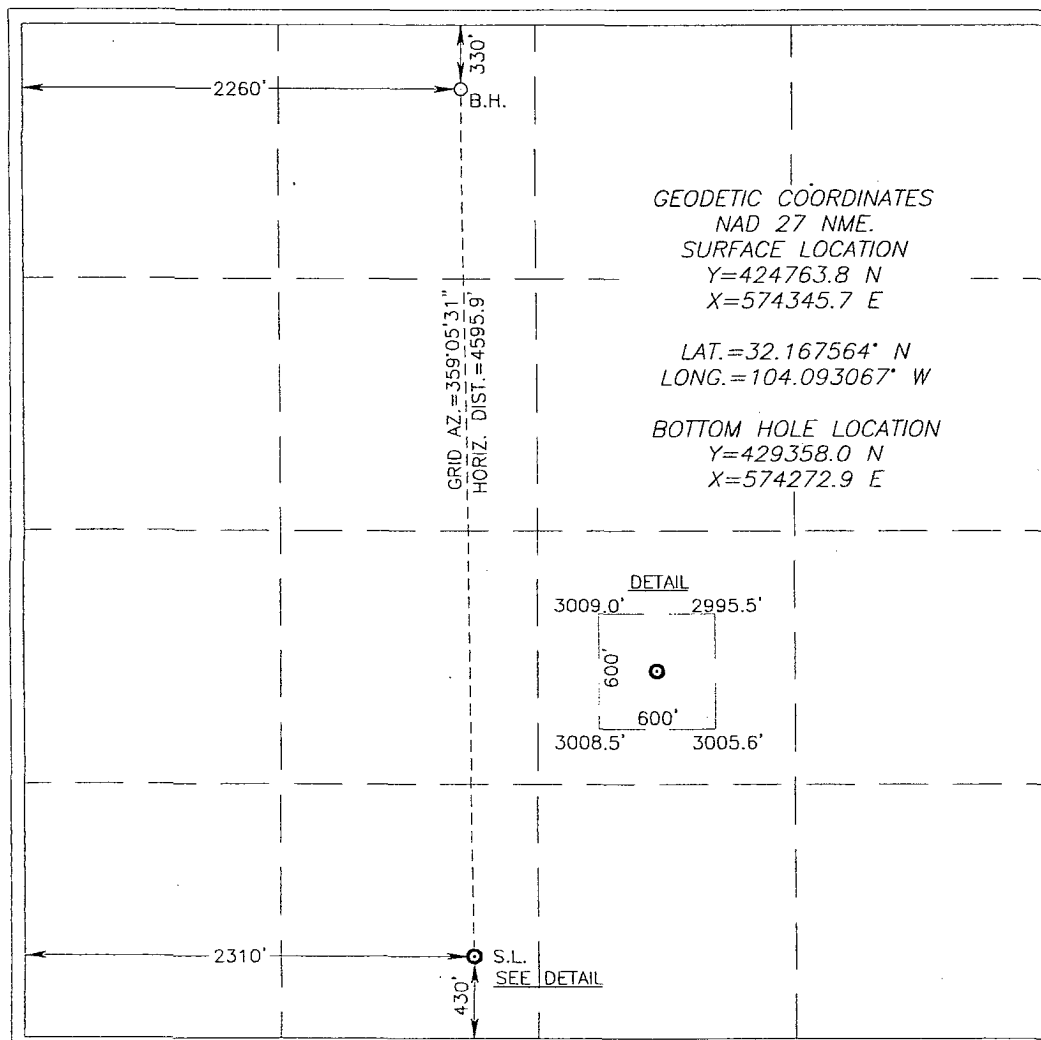
UL or lot No.	Section	Township	Range	Lot Idn	Feet from the	North/South line	Feet from the	East/West line	County
N	33	24-S	28-E		430	SOUTH	2310	WEST	EDDY

Bottom Hole Location If Different From Surface

UL or lot No.	Section	Township	Range	Lot Idn	Feet from the	North/South line	Feet from the	East/West line	County
C	33	24-S	28-E		330	NORTH	2260	WEST	EDDY

Dedicated Acres	Joint or Infill	Consolidation Code	Order No.

NO ALLOWABLE WILL BE ASSIGNED TO THIS COMPLETION UNTIL ALL INTERESTS HAVE BEEN CONSOLIDATED
OR A NON-STANDARD UNIT HAS BEEN APPROVED BY THE DIVISION



OPERATOR CERTIFICATION

I hereby certify that the information herein is true and complete to the best of my knowledge and belief, and that this organization either owns a working interest or unleased mineral interest in the land including the proposed bottom hole location or has a right to drill this well at this location pursuant to a contract with an owner of such mineral or working interest, or to a voluntary pooling agreement or a compulsory pooling order heretofore entered by the division.

Rand French 3-14-11
Signature Date
Printed Name

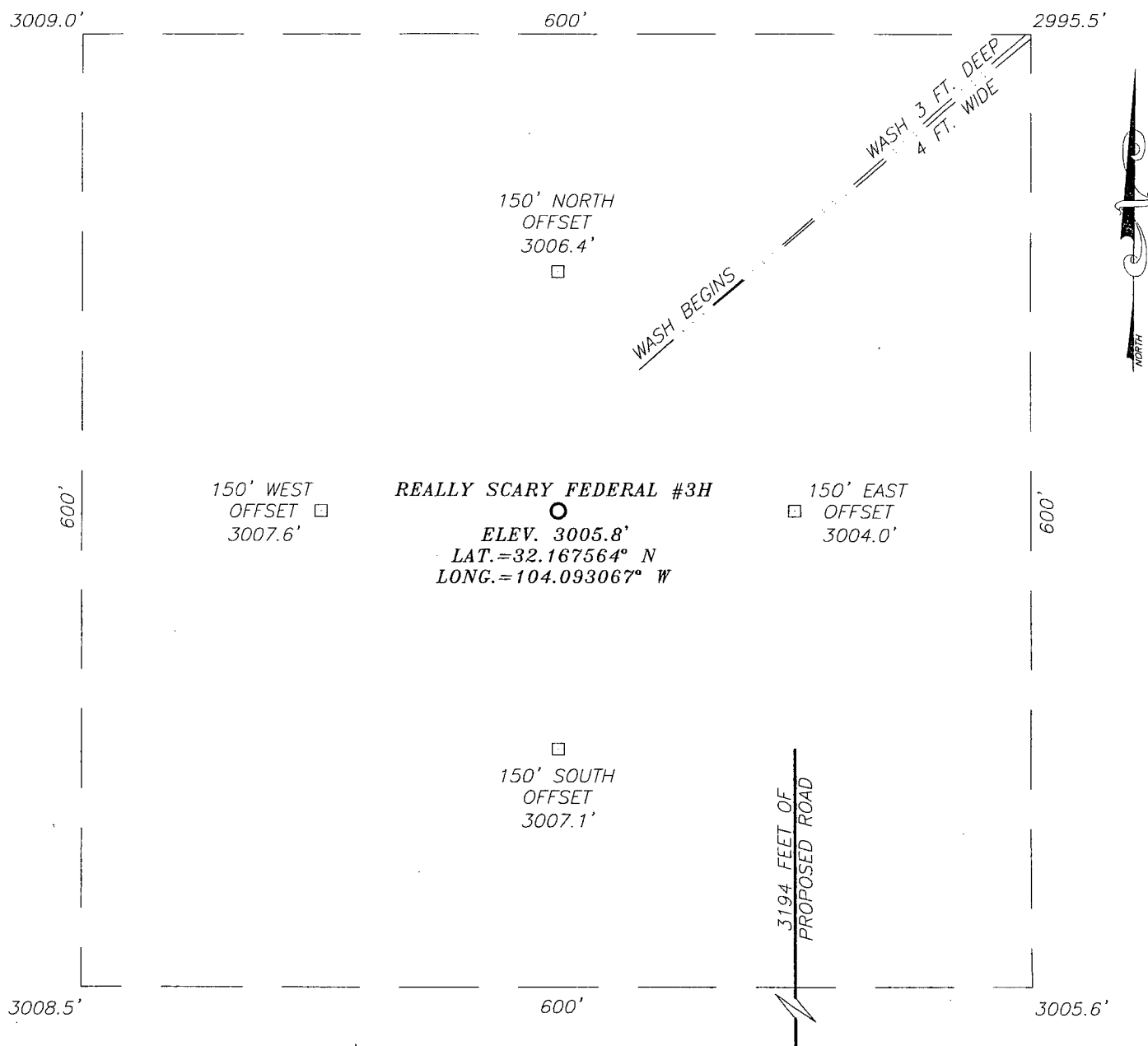
SURVEYOR CERTIFICATION

I hereby certify that the well location shown on this plat was plotted from field notes of actual surveys made by me or under my supervision, and that the same is true and correct to the best of my belief.

RONALD J. EIDSON
FEBRUARY 7, 2008
Date Surveyed
Signature & Seal of Professional Surveyor
Ronald J. Eidson 3/14/2011

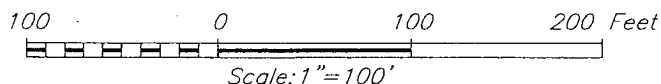
Certificate No. GARY G. EIDSON 12641
RONALD J. EIDSON 3239

SECTION 33, TOWNSHIP 24 SOUTH, RANGE 28 EAST, N.M.P.M.,
 EDDY COUNTY, NEW MEXICO



DIRECTIONS TO LOCATION

FROM THE INTERSECTION OF COUNTY ROAD 720 (BLACK RIVER VILLAGE ROAD) AND U.S. HIGHWAY 285, GO SOUTH ON U.S. HIGHWAY 285 APPROX. 4.7 MILES. TURN RIGHT ON CALICHE ROAD AND GO WEST APPROX. 150 FEET. TURN LEFT AND GO SOUTH APPROX. 0.3 MILES. BEND RIGHT AND GO NORTHWEST APPROX. 1.2 MILES TO A PROPOSED ROAD SURVEY. FOLLOW ROAD SURVEY SOUTH 417 FEET, THEN WEST 2457 FEET, THEN NORTH 320 FEET. THIS LOCATION IS APPROX. 212 FEET NORTHWEST.



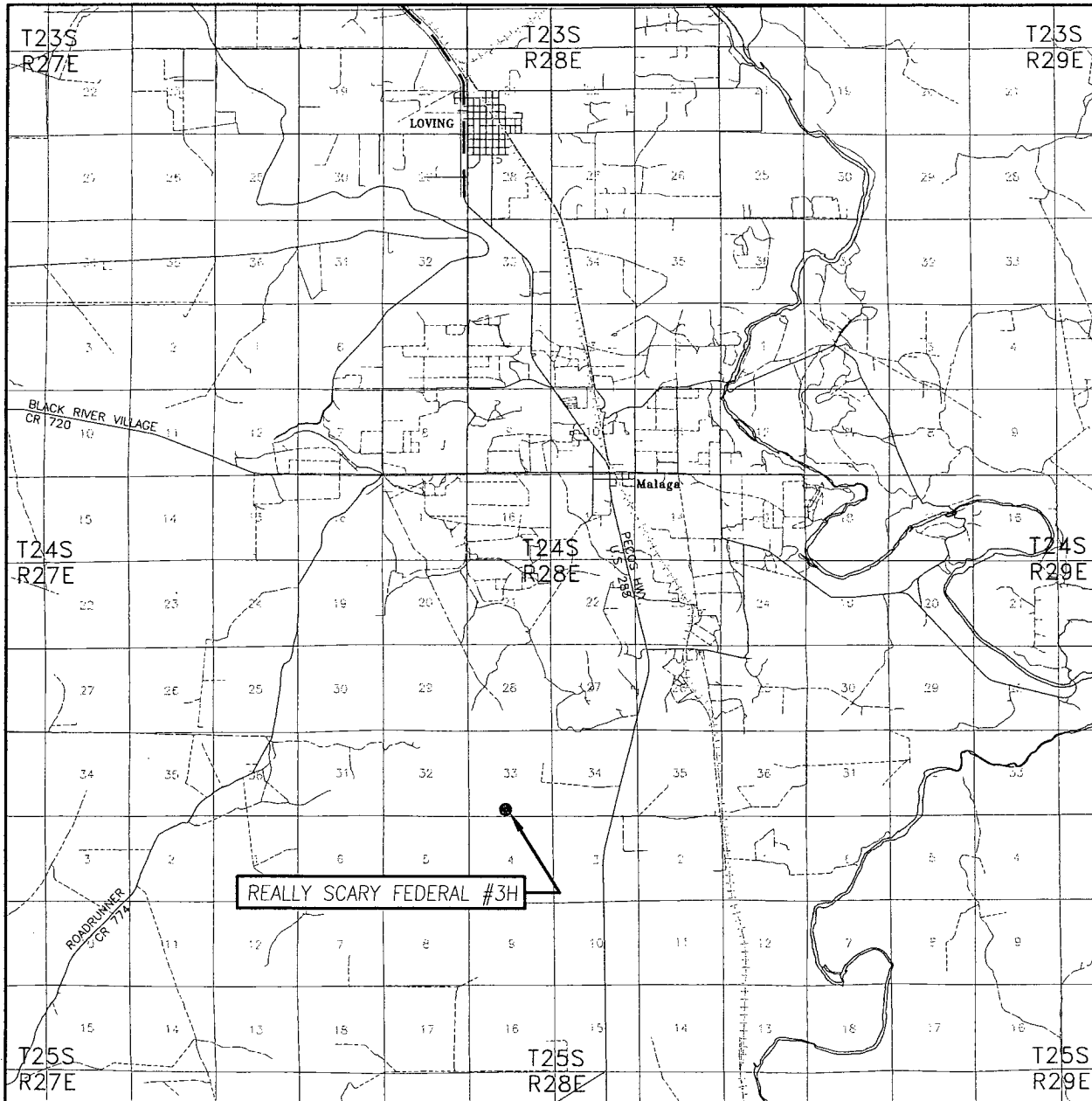
COG OPERATING, LLC

REALLY SCARY FEDERAL #3H WELL
 LOCATED 430 FEET FROM THE SOUTH LINE
 AND 2310 FEET FROM THE WEST LINE OF SECTION 33,
 TOWNSHIP 24 SOUTH, RANGE 28 EAST, N.M.P.M.,
 EDDY COUNTY, NEW MEXICO.

Survey Date: 3/28/08	Sheet 1 of 1 Sheets
W.O. Number: 11.13.0677	Dr By: LA
Date: 02/11/08	REL:08110398
11130677	Scale: 1"=100'

PROVIDING SURVEYING SERVICES
 SINCE 1946
JOHN WEST SURVEYING COMPANY
 412 N. DAL PASO
 HOBBS, N.M. 88240
 (575) 393-3117

VICINITY MAP



SCALE: 1" = 2 MILES

SEC. 33 TWP. 24-S RGE. 28-E

SURVEY N.M.P.M.

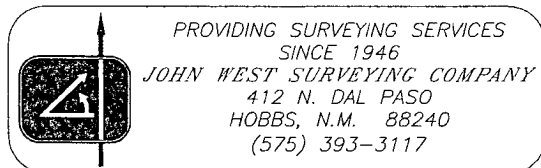
COUNTY EDDY STATE NEW MEXICO

DESCRIPTION 430' FSL & 2310' FWL

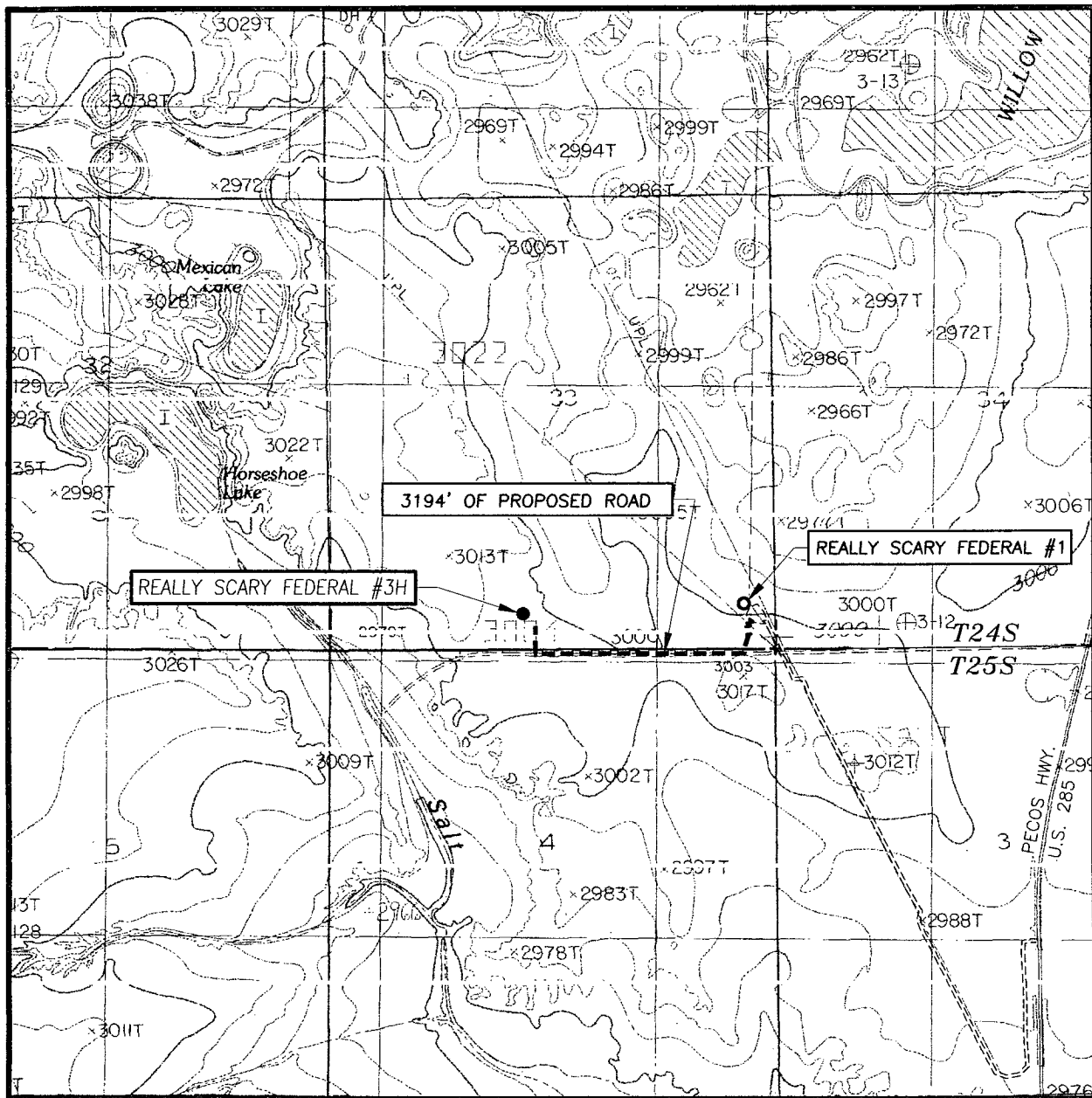
ELEVATION 3006'

OPERATOR COG OPERATING, LLC

LEASE REALLY SCARY FEDERAL



LOCATION VERIFICATION MAP



SCALE: 1" = 2000'

CONTOUR INTERVAL: 10'
MALAGA, NM

SEC. 33 TWP. 24-S RGE. 28-E

SURVEY N.M.P.M.

COUNTY EDDY STATE NEW MEXICO

DESCRIPTION 430' FSL & 2310' FWL

ELEVATION 3006'

OPERATOR COG OPERATING, LLC

LEASE REALLY SCARY FEDERAL

U.S.G.S. TOPOGRAPHIC MAP
MALAGA, NM

