

30-015-39061

BURNETT OIL CO., INC. EMERGENCY NOTIFICATION LIST

Burnett's New Mexico Office (575) 677-2313
Belton Mathews BOCI District Superintendent CELL (575) 703-9601
BURNETT OIL HOME OFFICE (817) 332-5108
Mark Jacoby BOCI ENGINEERING MANAGER CELL (817) 312- 2751

EDDY COUNTY SHERIFF 911 OR (575) 746-9888
NEW MEXICO STATE POLICE (575) 746-2701

Loco Hills Fire Department (VOLUNTEER ONLY) 911 OR (575) 677 2349
For Medical and Fire (575) 746-2701 (ARTESIA)

Flight for Life Air Ambulance (LUBBOCK) (806) 743-9911
Aerocare Air Ambulance (LUBBOCK) (806) 747-8923
Med Flight Air Ambulance (ALBUQ) (505) 842-4433
S B Med Svc Air Ambulance (ALBUQ) (505) 842-4949

US Bureau of Land Management Carlsbad (575) 361-2822 (575) 234-5972
New Mexico Oil Conversation Division ARTESIA (575) 748-1283
New Mexico Emergency Response Commission 24 HR (575) 827-9126
New Mexico State Emergency Operation Center (575) 476-9635
Local Emergency Planning Committee (Artesia) (575) 746-2122
National Emergency Response Center (Washington, DC) (800) 424-8802

Boots & Coots IWC (800) 256-9688
Cudd Pressure Control (432) 570-5300
Halliburton Svc (575) 746-2757
B J Svc (575) 746-2293

THIS MUST BE POSTED AT THE RIG WHILE ON LOCATION.

Burnett Office 87 SQUARE LAKE ROAD (CR #220), Loco Hills, New Mexico 88255
(Loco Hills, New Mexico (2 MILES East of Loco Hills On US Hwy 82 TO C#220 Then North On CR# 220 Approx One Mile To Office.).

SURFACE EXHIBIT A

Partition Federal #1

HYDROGEN SULFIDE (H2S) CONTINGENCY PLAN

ASSUMED 100 PPM ROE = 3000'

HOBBS OCD

MAY 10 2011

RECEIVED

Emergency Procedures

In the event of a release of gas containing H2S, The first responder(s) must

- * Isolate the area and prevent entry by other persons into the 100 PPM ROE.
- * Evacuate any public places encompassed by 100 PPM ROE.
- * Be equipped with H2S monitors and air packs in order to control release.
- * Use the "buddy system" to ensure no injuries occur during the response.
- * Take precautions to avoid personal injury during this operation.
- * Have received training in the following:
 1. H2S detection
 2. Measures for protection against this gas
 3. Equipment used for protection and emergency response.

Ignition of Gas Source

Should control of the well be considered lost and ignition considered, take care to protect against exposure to Sulfur Dioxide (SO2.) Intentional ignition must be coordinated with the NMOC and local officials. Additionally the New Mexico State Police may become involved. NM State Police shall be the incident command on scene of any major release. Take care to protect downwind whenever there is an ignition of gas.

Characteristics of H2S and SO2

Common Name	Chemical Formula	Specific Gravity	Threshold Limit	Hazardous Limit	Lethal Concentration
Hydrogen Sulfide	H2S	1.189 Air = 1	10 ppm	100 ppm/hr	600 ppm
Sulfur Dioxide	SO2	2.21 Air = 1	2 ppm	NA	1000 ppm

Contacting Authorities

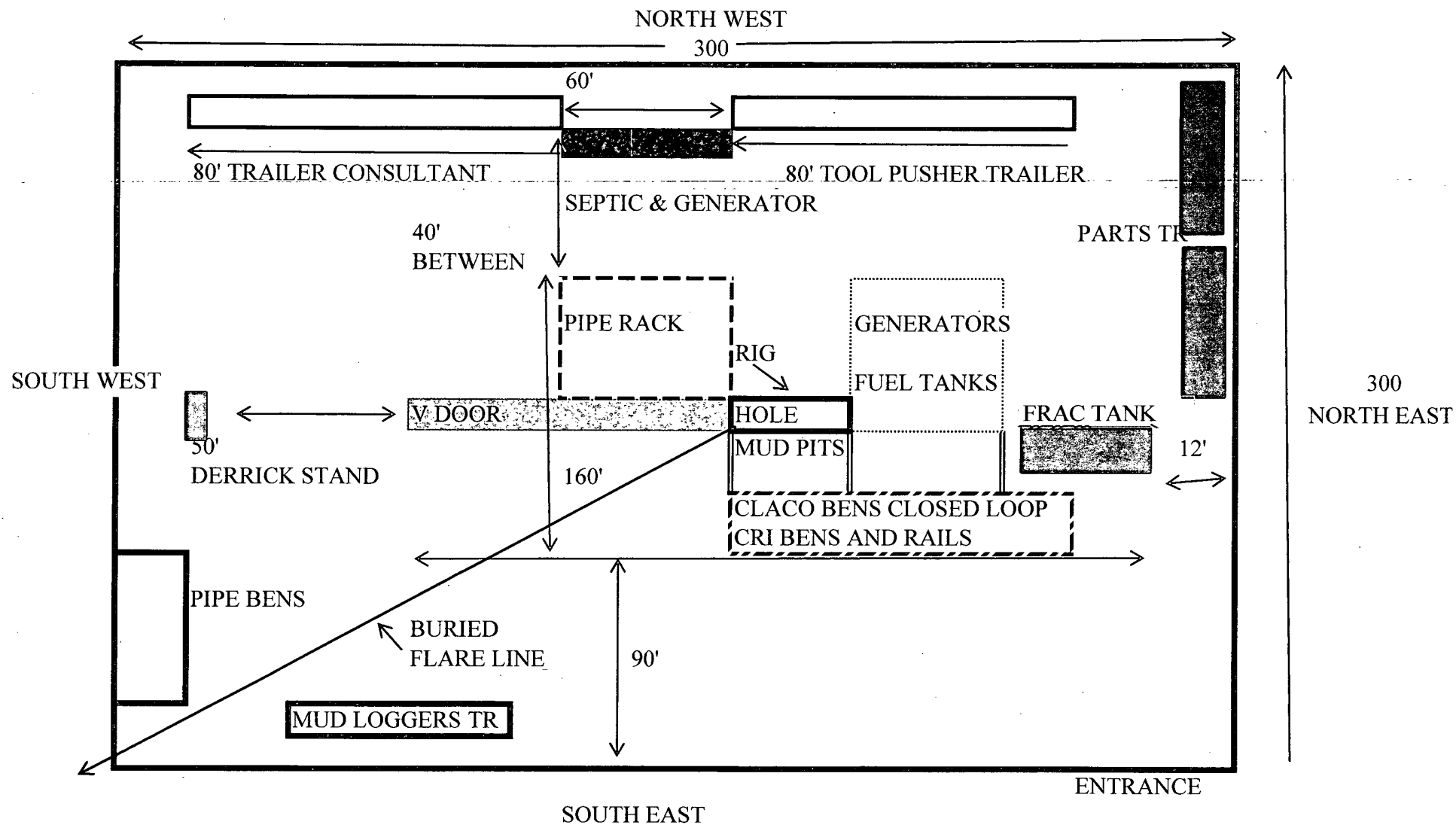
Burnett Oil Co., Inc. personal must liaison with local and state agencies to ensure a proper response to a major release. Additionally, the OCD must be notified of the release as soon as possible but no later than 4 hours. Agencies will ask for information such as type and volume of release, wind and direction, location of release, etc. **Be sure all is written down and ready to give to contact list (Drilling Exhibit A.) Directions to the site are below.** Burnett's response must be in coordination with the State of New Mexico's Hazardous Materials Emergency Response Plan.

Burnett Office 87 SQUARE LAKE ROAD (CR #220), Loco Hills, New Mexico 88255
(Loco Hills, New Mexico (2 MILES East of Loco Hills On US Hwy 82 TO C#220 Then North On CR# 220 Approx One Mile To Office

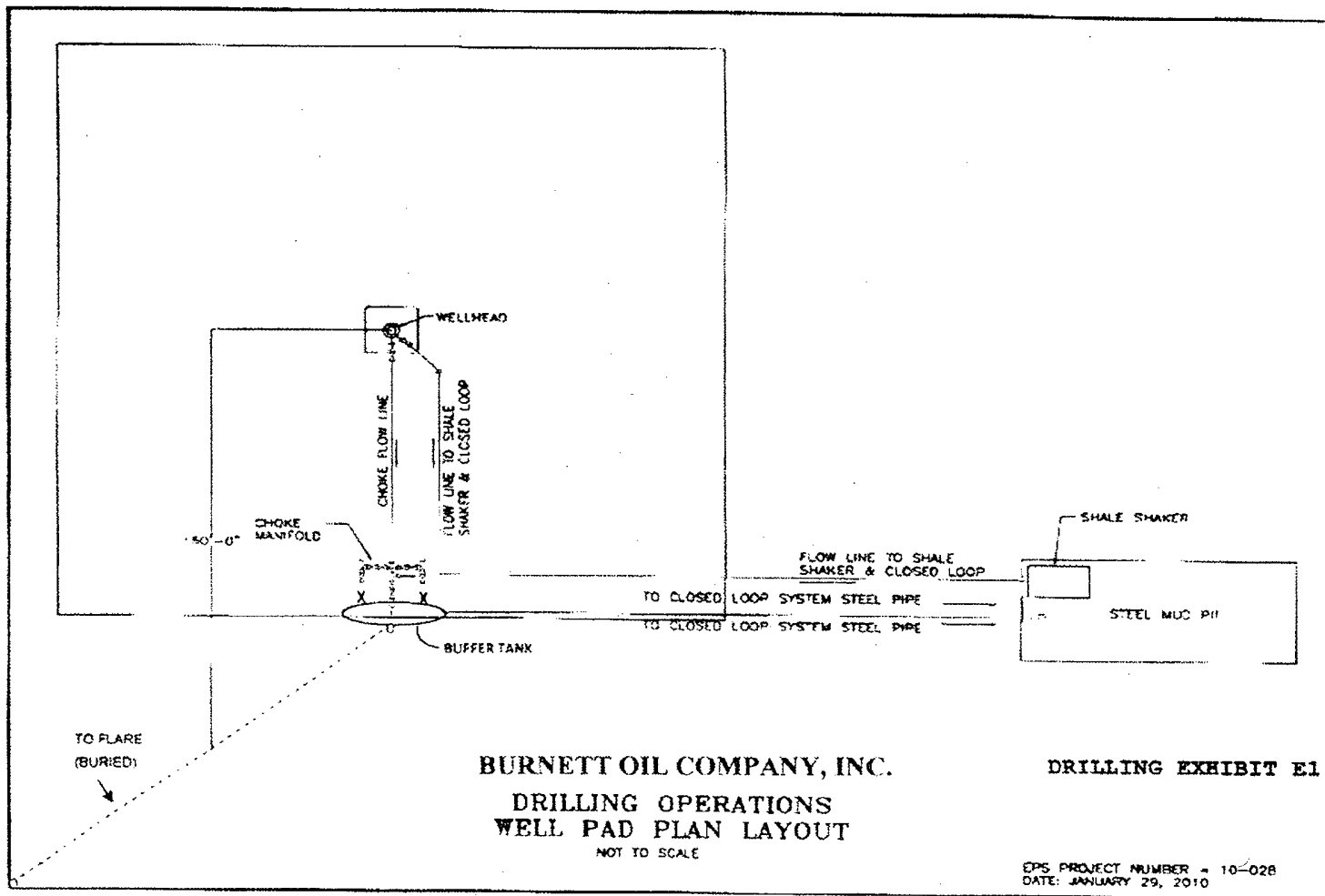
BURNETT OIL CO., INC.

DRILLING EXHIBIT B

Particular Fed. #11



Partition Federal #1 Drill Site Layout
Surface Exhibit D



BURNETT OIL CO., INC. OPERATOR CERTIFICATION
ALL VERTICAL MALJAMAR, WEST (Yeso) WELLS
FEDERAL LEASE # LC029338A, (NM) LC029415B, (NM) LC029415A
Section 12, 13, 24 Township 17 South, Range 31 East, Eddy County, N.M

Operator's Representative:

Burnett Oil Co., Inc. field representative responsible for compliance with the approved surface use and operations plan is:

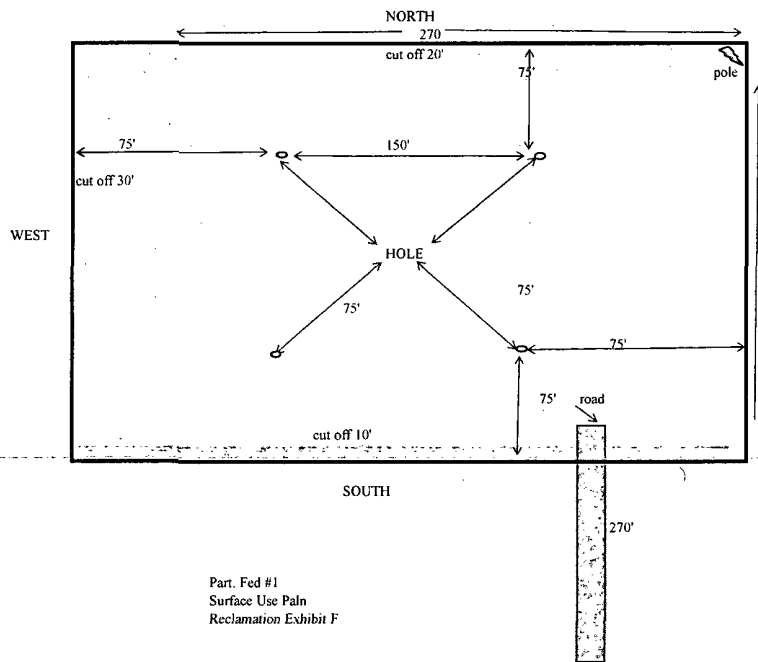
Mr. Belton Mathews, District Supt.
P.O. Box 188
Loco Hills, New Mexico 88255
Office phone: (575) 677-2313
Home phone: (575) 746-8647
Cellular phone: (575) 703-9601

I hereby certify that I, or persons under my direct supervision have inspected the drill site and access route; that I am familiar with the conditions that currently exist; that the statements made in this plan are to the best of my knowledge, true and correct; and that the work associated with operations proposed herein will be performed by Burnett Oil Co., Inc. and its contractors and subcontractors in conformity with this plan and the terms and conditions under which it is approved. This statement is subject to the provisions of 18 U.S.C. 1001 for the filing of a false statement.

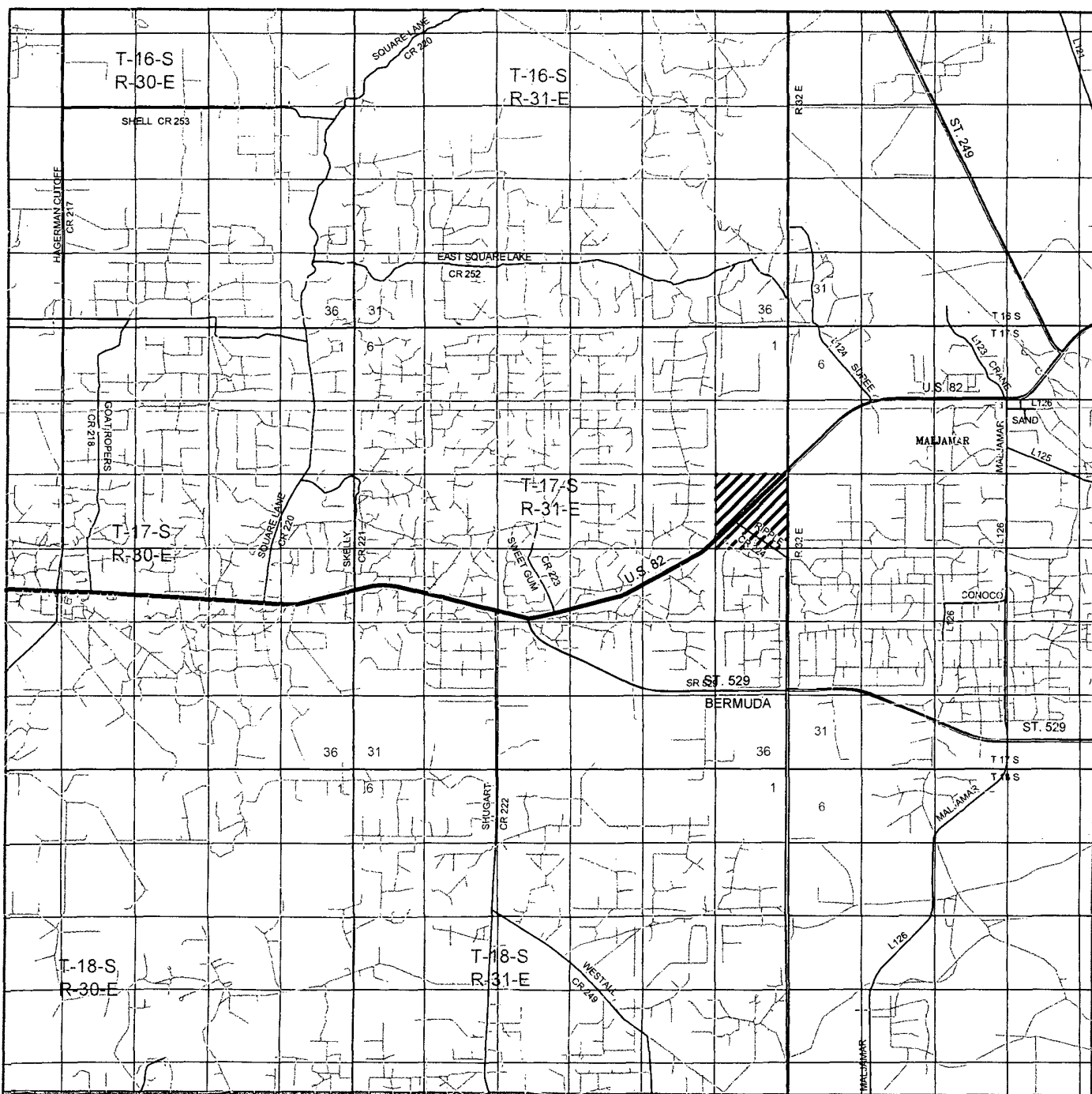
Date: 2/7/11

By

Mark A. Jacoby
Mark A. Jacoby
Engineering Manager



Part, Fed #1
Surface Use Palm
Reclamation Exhibit F



PARTITION FEDERAL #1

SURFACE EXHIBIT A

Located 430' FSL and 430' FWL

**Section 13, Township 17 South, Range 31 East,
N.M.P.M., Eddy County, New Mexico.**

**basin
surveys**

**focused on excellence
in the oilfield**

P.O. Box 1786
1120 N. West County Rd.
Hobbs, New Mexico 88241
(575) 393-7316 - Office
(575) 392-2206 - Fax
basinsurveys.com

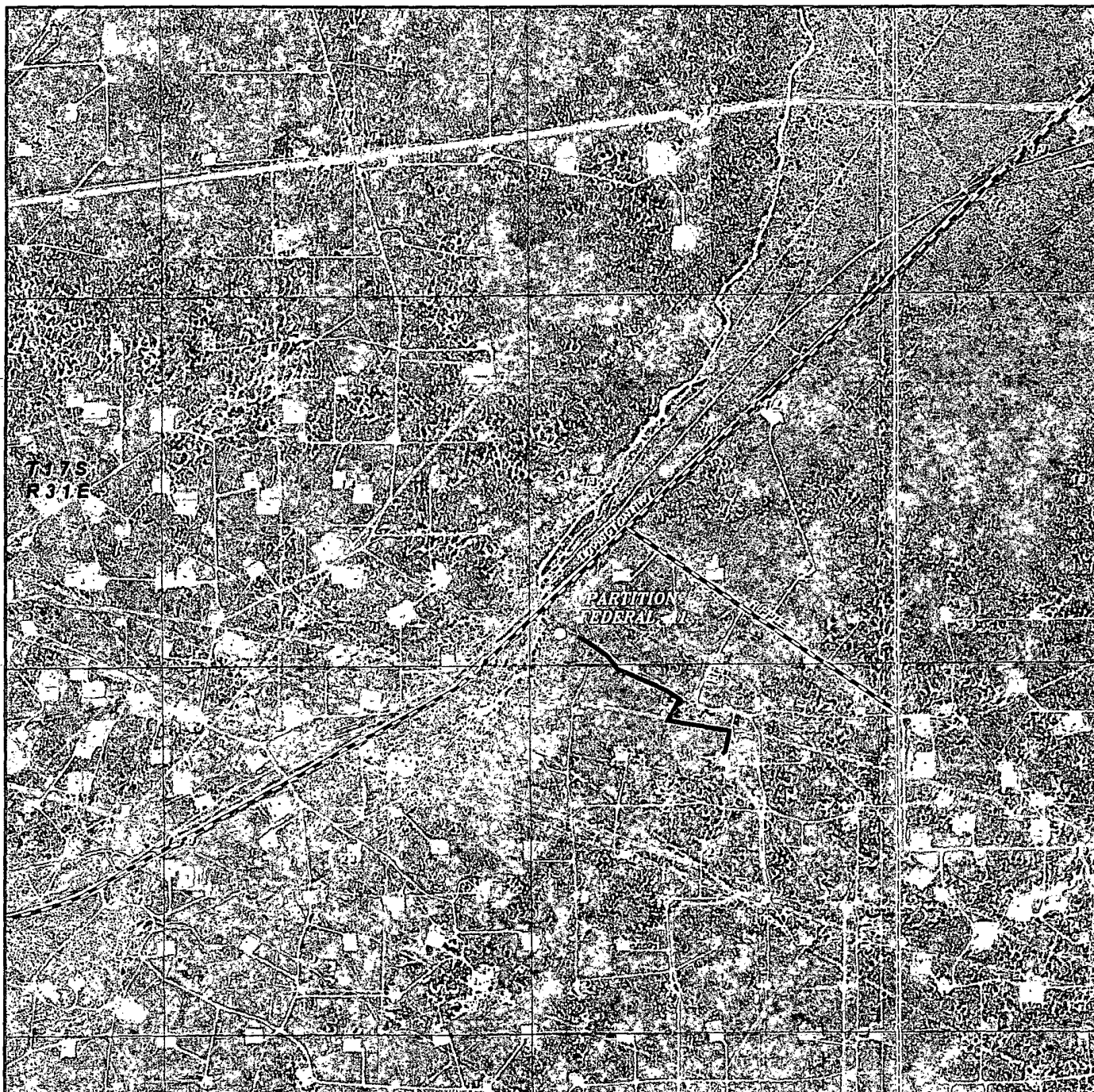
W.O. Number: JMS 23963

Survey Date: 01-24-2011

Scale: 1" = 2 Miles

Date: 01-25-2011

**BURNETT OIL
COMPANY, INC.**

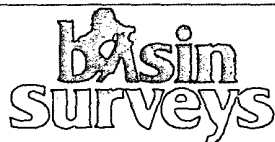


PARTITION FEDERAL #1

Surface Exhibit A2

Located 430' FSL and 430' FWL

Section 13, Township 17 South, Range 31 East,
N.M.P.M., Eddy County, New Mexico.



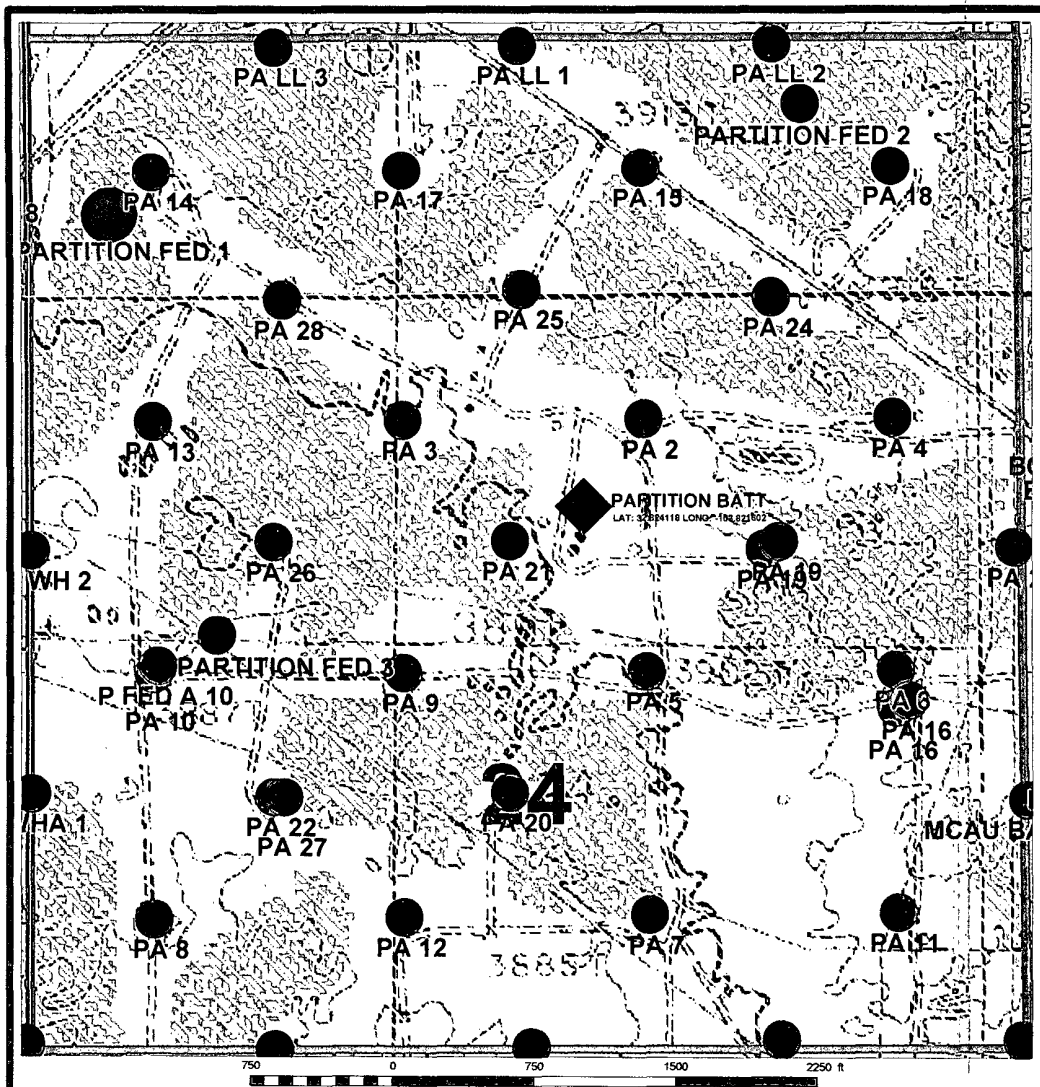
P.O. Box 1786
1120 N. West County Rd.
Hobbs, New Mexico 88241
(575) 393-7316 - Office
(575) 392-2206 - Fax
basinsurveys.com

W.O. Number: JMS 23963

Scale: 1" = 2000'

YELLOW TINT - USA LAND
BLUE TINT - STATE LAND
NATURAL COLOR - FEE LAND

**BURNETT OIL
COMPANY, INC.**



Puckett Area Producing Zone

- YESO
- GBSA

Well Names

PN = Puckett North
PA = Puckett A
PB = Puckett B

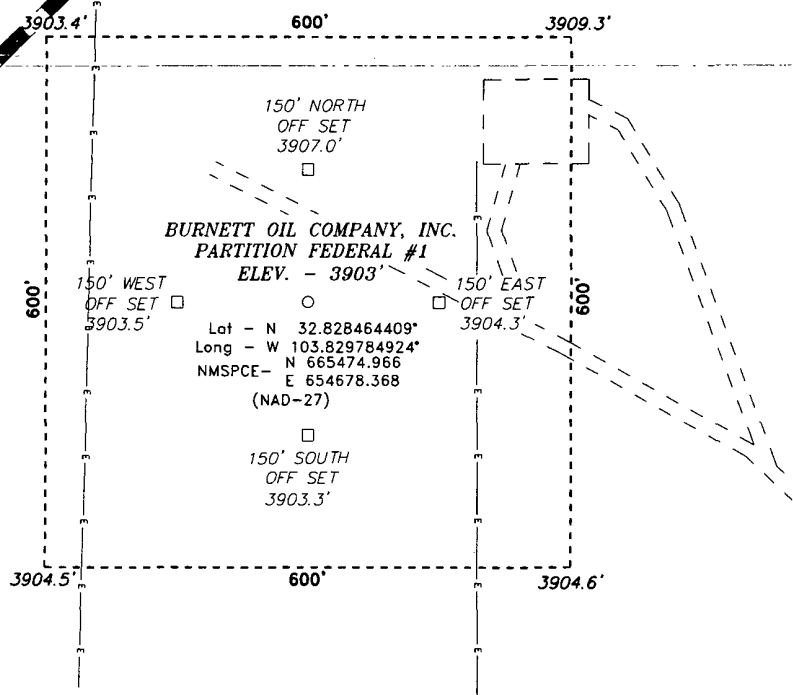
Burnett Oil Co., Inc.
6666

Partition Fed 1 Proposed Well Location
(Map Reflects Burnett Operated Wells Only)
Eddy County, New Mexico

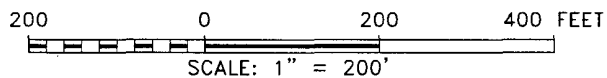
Author: CLK, Eng Tech	Date: January 4, 2011
Scale: 1" = 750'	

SURFACE EXHIBIT B

Partition Fed 1
T17S, R31E, Sect 13, Unit M
NMLC029415A
330' FSL, 330' FWL
Lat/Long: 32.82808, -103.830054



SURFACE EXHIBIT C
PARTITION FEDERAL #1



FROM THE JUNCTION OF HWY 82 AND RIPPLE, GO
SOUTHEAST ON RIPPLE FOR 0.4 MILES TO LEASE
ROAD, ON LEASE ROAD GO SOUTHWEST 0.3 MILES
TURNING NORTHWEST FOR 0.4 MILES TO PROPOSED
LOCATION.

BASIN SURVEYS P.O. BOX 1786—HOBBS, NEW MEXICO

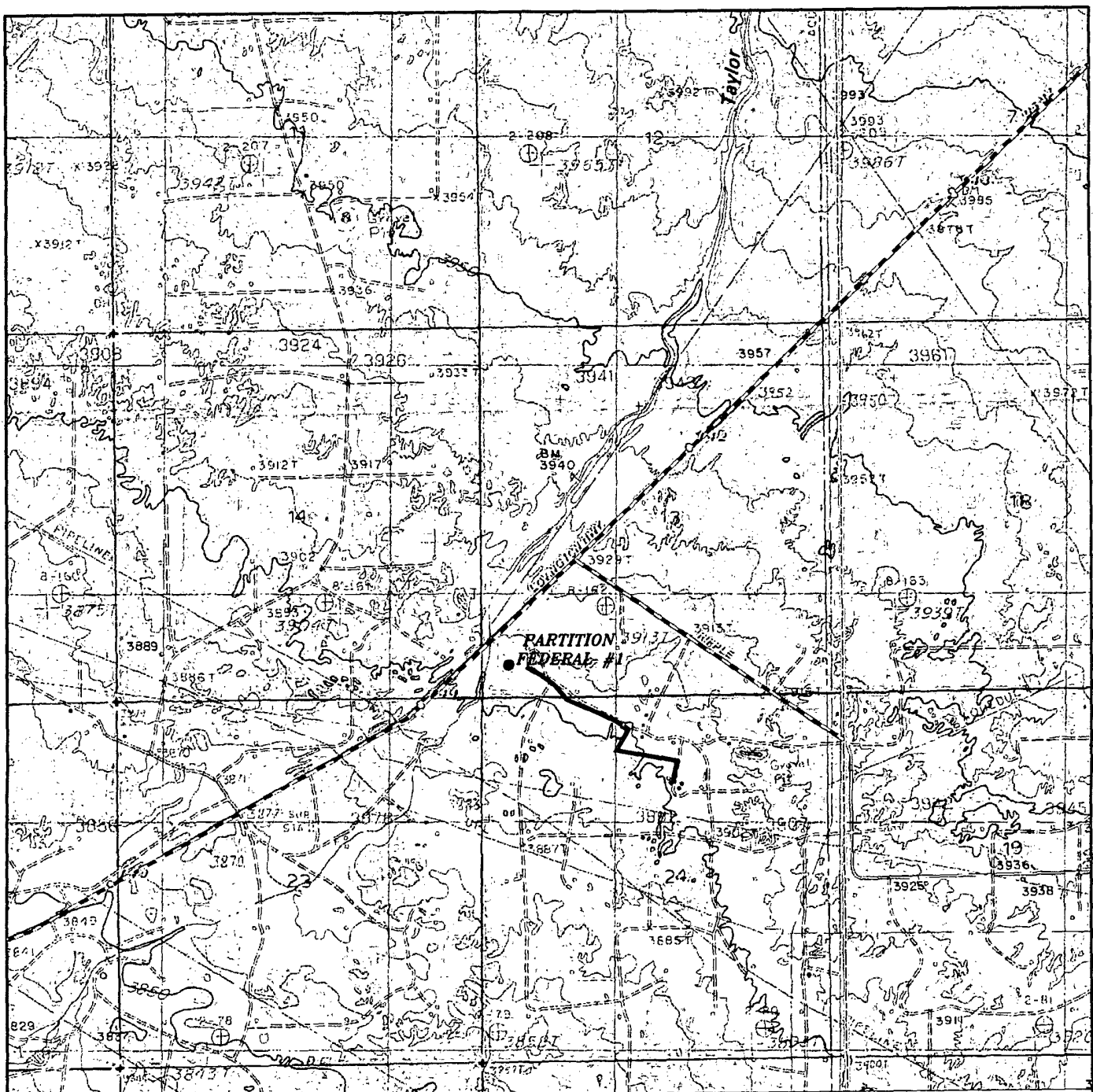
Drawn By: J. SMALL

BURNETT OIL COMPANY, INC.

THE PARTITION FEDERAL #1 LOCATED 430'

FROM THE SOUTH LINE AND 430' FROM THE WEST LINE OF
SECTION 13, TOWNSHIP 17 SOUTH, RANGE 31 EAST,
N.M.P.M., EDDY COUNTY, NEW MEXICO.

Survey Date: 01-24-2011 Sheet 1 of 1 Sheets



PARTITION FEDERAL #1

Located 430' FSL and 430' FWL

Section 13, Township 17 South, Range 31 East,
N.M.P.M., Eddy County, New Mexico.

basin
surveys

focused on excellence
in the oilfield

P.O. Box 1786
1120 N. West County Rd.
Hobbs, New Mexico 88241
(575) 393-7316 - Office
(575) 392-2206 - Fax
basinsurveys.com

W.O. Number: JMS 23963

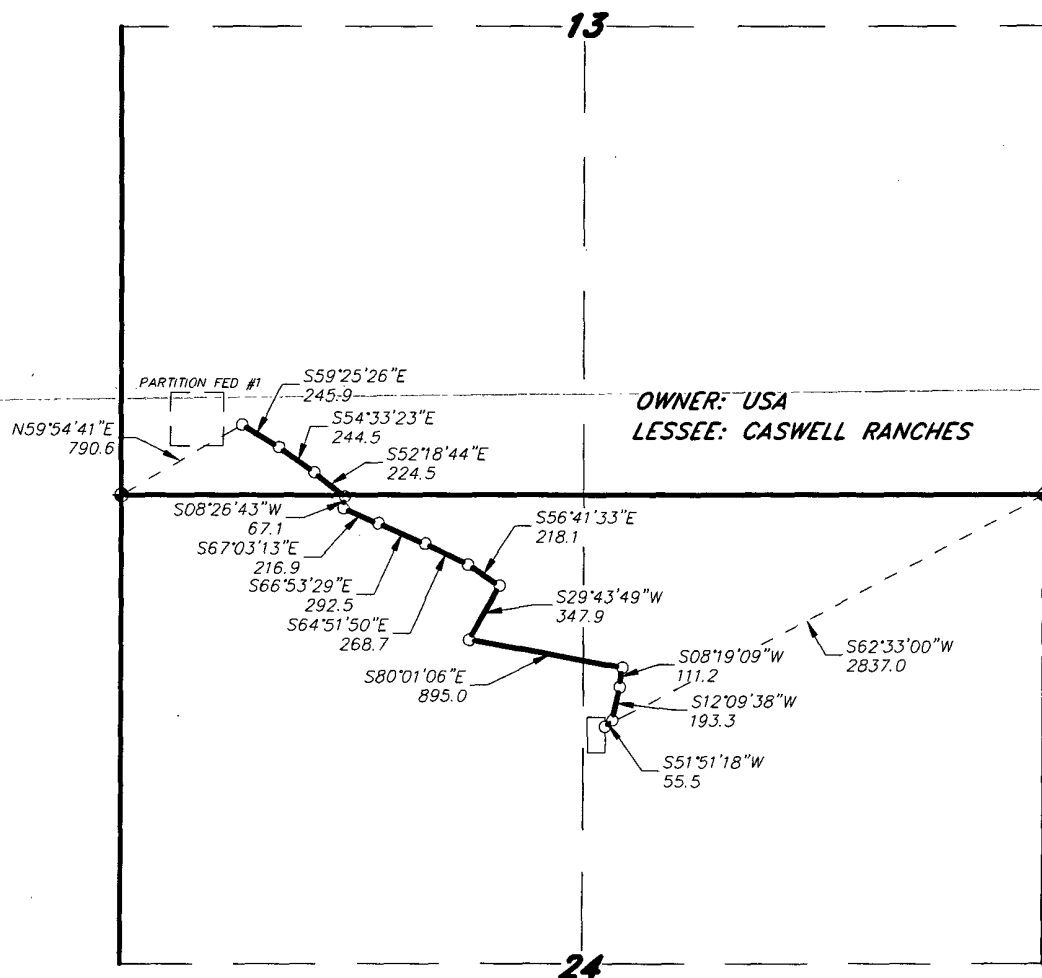
Survey Date: 01-24-2011

Scale: 1" = 2000'

Date: 01-25-2011

BURNETT OIL
COMPANY, INC.

SECTIONS 13&24, TOWNSHIP 17 SOUTH, RANGE 31 EAST, N.M.P.M.,
EDDY COUNTY, NEW MEXICO.



LEGAL DESCRIPTION

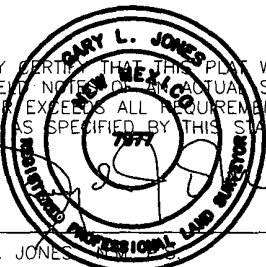
A STRIP OF LAND 30.0 FEET WIDE, LOCATED IN SECTIONS 13&24, TOWNSHIP 17 SOUTH, RANGE 31 EAST, N.M.P.M., EDDY COUNTY, NEW MEXICO AND BEING 15.0 FEET LEFT AND RIGHT OF THE ABOVE PLATTED CENTERLINE SURVEY.

SECTION 13 = 698.4 FEET = 42.33 RODS = 0.13 MILES = 0.48 ACRES

SECTION 24 = 2682.7 FEET = 162.59 RODS = 0.51 MILES = 1.85 ACRES

TOTAL = 3381.1 FEET = 204.92 RODS = 0.64 MILES = 2.33 ACRES

I HEREBY CERTIFY THAT THIS PLAT WAS PREPARED FROM FIELD NOTES OF AN ACTUAL SURVEY AND MEETS OR EXCEEDS ALL REQUIREMENTS FOR LAND SURVEYS AS SPECIFIED BY THIS STATE.



GARY L. JONES

TEXAS P.L.S.

No. 7977

No. 5074

1000 0 1000 2000 FEET



BURNETT OIL COMPANY, INC.

REF: PROPOSED FLOWLINE TO THE PARTITION FEDERAL #1

A FLOWLINE CROSSING USA LAND IN

SECTIONS 13&24, TOWNSHIP 17 SOUTH, RANGE 31 EAST,

N.M.P.M., EDDY COUNTY, NEW MEXICO.

BASIN SURVEYS P.O. BOX 1786—HOBBS, NEW MEXICO

W.O. Number: 23963

Drawn By: J. M. SMALL

Date: 01-25-2011

Disk: JMS 23963

Survey Date: 01-24-2011

Sheet 1 of 1 Sheets