

DISTRICT I
1625 N. FRENCH DR., HOBBS, NM 88240
DISTRICT II
1301 W. GRAND AVENUE, ARTESIA, NM 88210
DISTRICT III
1000 RIO BRAZOS RD., AZTEC, NM 87410
DISTRICT IV
11885 S. ST. FRANCIS DR., SANTA FE, NM 87505

State of New Mexico
Energy, Minerals & Natural Resources Department
OIL CONSERVATION DIVISION
1220 South St. Francis Dr.
Santa Fe, New Mexico 87505

Form C-102
Revised July 16, 2010
Submit to Appropriate
District Office

☐ AMENDED REPORT

WELL LOCATION AND ACREAGE DEDICATION PLAT

| | | |
|-----------------------------------|--|--|
| API Number 30-015-39069 | Pool Code 96830 | Pool Name Artesia; Glorieta - Yeso (U) |
| Property Code 308712 | Property Name D STATE | Well Number 64 |
| OGRID No. 873 | Operator Name APACHE CORPORATION | Elevation 3675' |

Surface Location

| | | | | | | | | | |
|---------------------------|----------------------|-------------------------|----------------------|---------|------------------------------|----------------------------------|------------------------------|-------------------------------|-----------------------|
| UL or lot No. J | Section 25 | Township 17-S | Range 28-E | Lot Idn | Feet from the 2340 | North/South line SOUTH | Feet from the 2310 | East/West line EAST | County EDDY |
|---------------------------|----------------------|-------------------------|----------------------|---------|------------------------------|----------------------------------|------------------------------|-------------------------------|-----------------------|

Bottom Hole Location If Different From Surface

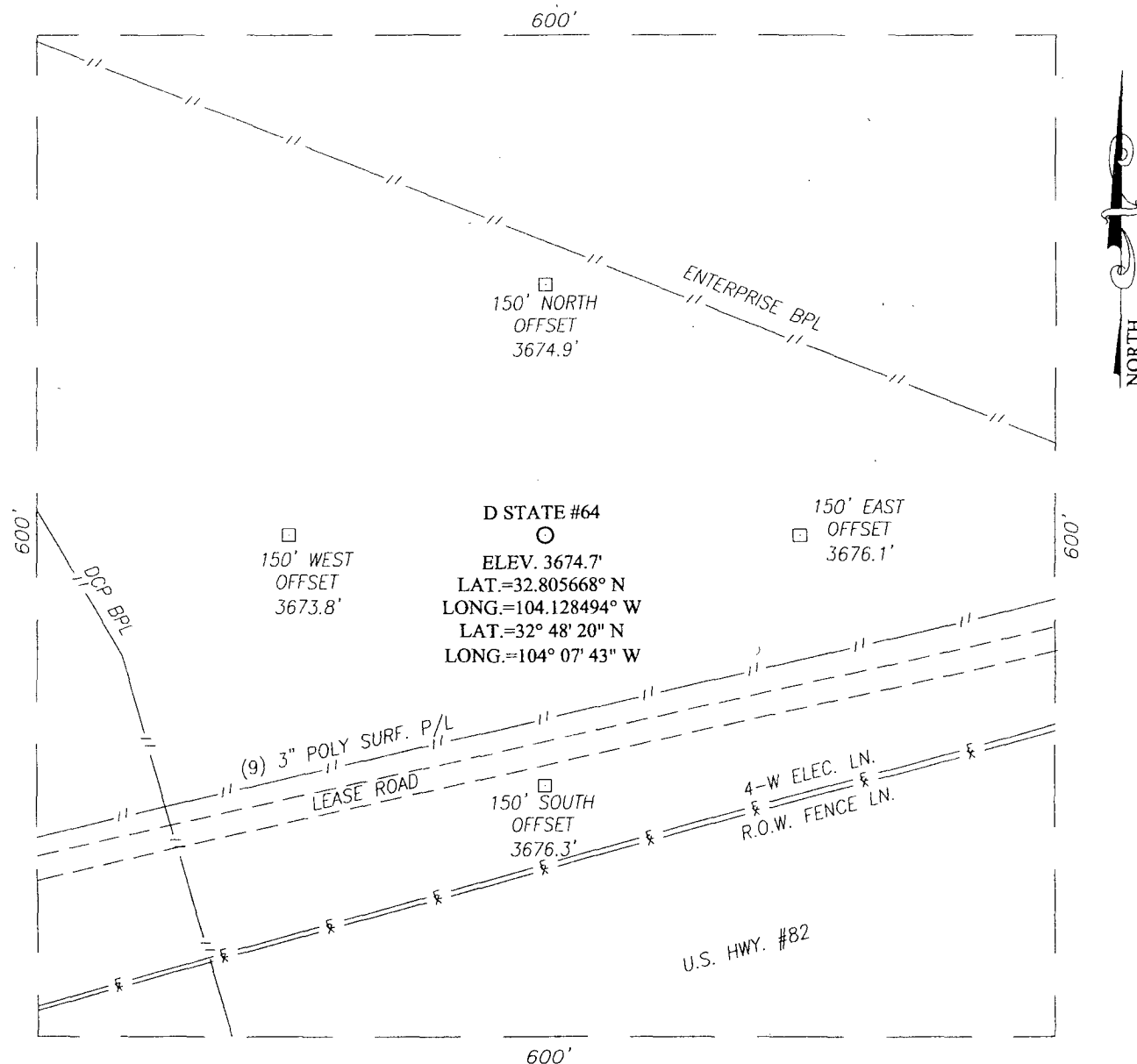
| | | | | | | | | | |
|---------------|---------|----------|-------|---------|---------------|------------------|---------------|----------------|--------|
| UL or lot No. | Section | Township | Range | Lot Idn | Feet from the | North/South line | Feet from the | East/West line | County |
|---------------|---------|----------|-------|---------|---------------|------------------|---------------|----------------|--------|

| | | | |
|------------------------------|-----------------|--------------------|-----------|
| Dedicated Acres 40 | Joint or Infill | Consolidation Code | Order No. |
|------------------------------|-----------------|--------------------|-----------|

NO ALLOWABLE WILL BE ASSIGNED TO THIS COMPLETION UNTIL ALL INTERESTS HAVE BEEN CONSOLIDATED OR A NON-STANDARD UNIT HAS BEEN APPROVED BY THE DIVISION

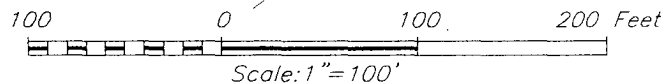
| | |
|--|--|
| | RECEIVED MAY 25 2011 INMOCD ARTESIA |
| | OPERATOR CERTIFICATION I hereby certify that the information herein is true and complete to the best of my knowledge and belief, and that this organization either owns a working interest or unleased mineral interest in the land including the proposed bottom hole location or has a right to drill this well at this location pursuant to a contract with an owner of such mineral or working interest, or to a voluntary pooling agreement or a compulsory pooling order heretofore entered by the division. Signature: <u>Sorina Flores</u> Date: <u>5/23/11</u> Printed Name: <u>Sorina L. Flores</u> E-mail Address: <u>sorina.flores@apachecorp.com</u> |
| | SURVEYOR CERTIFICATION I hereby certify that the well location shown on this plat was plotted from field notes of actual surveys made by me or under my supervision, and that the same is true and correct to the best of my belief. APRIL 25, 2011 Date of Survey Signature & Seal of Professional Surveyor: Certificate Number: <u>3239</u> Professional Surveyor: <u>Ronald J. Eidson</u> LA REV: 5/18/11 JWSC W.O.: 11.11.0944 |

SECTION 25, TOWNSHIP 17 SOUTH, RANGE 28 EAST, N.M.P.M.,
EDDY COUNTY, NEW MEXICO



DIRECTIONS TO LOCATION

FROM THE INTERSECTION OF U.S. HWY. #82 (LOVINGTON HWY.) AND CO. RD. #209 (TURKEY TRACK RD.), GO NORTHEAST ON ON HWY. #82 APPROX. 1.0 MILE. TURN LEFT AND GO NORTH APPROX. 100 FEET. TURN RIGHT AND GO NORTHEAST APPROX. 0.15 MILES. THE LOCATION STAKE IS APPROX. 130 FEET NORTH.



APACHE CORPORATION

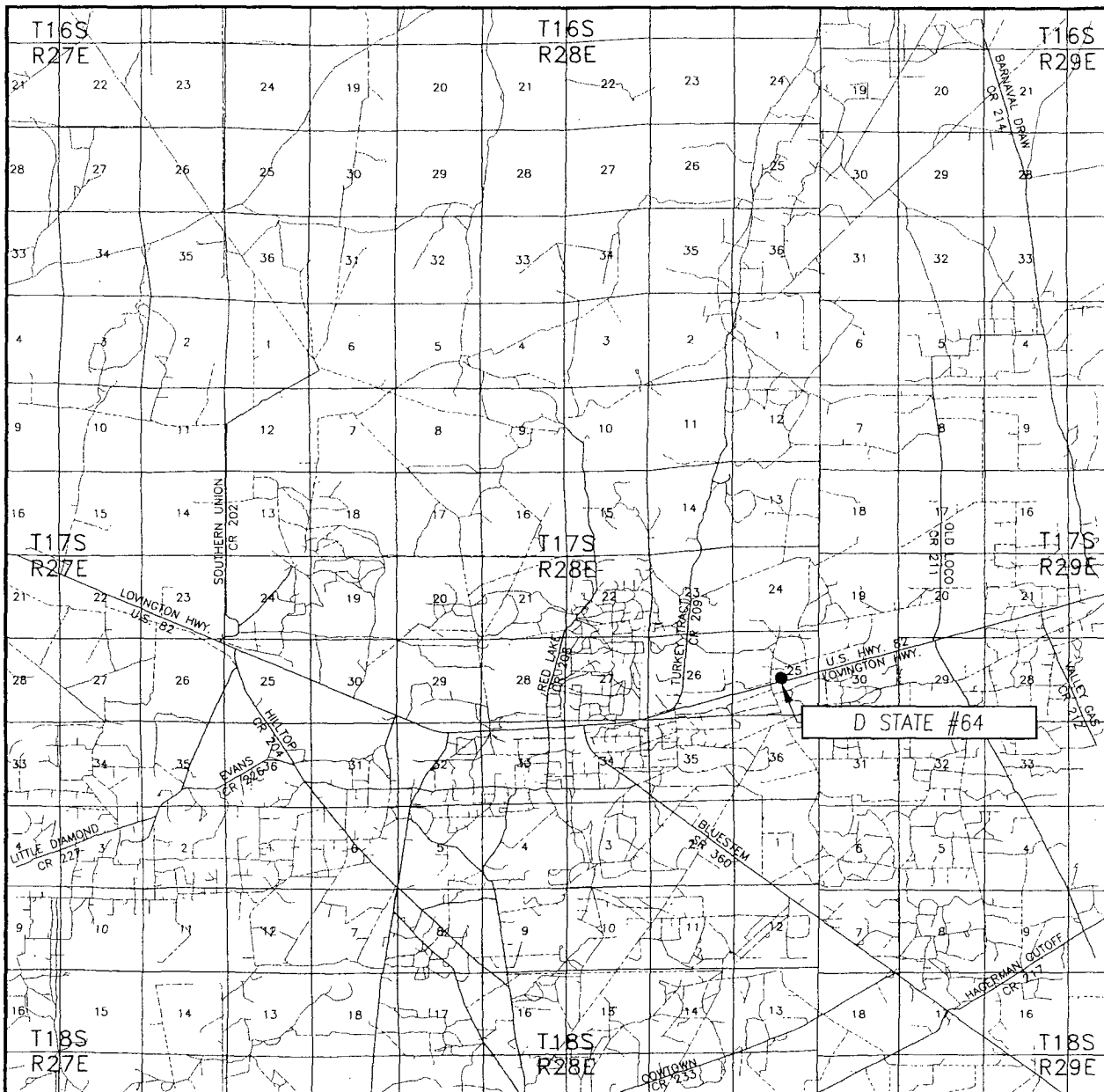
D STATE #64 WELL
LOCATED 2340 FEET FROM THE SOUTH LINE
AND 2310 FEET FROM THE EAST LINE OF SECTION 25,
TOWNSHIP 17 SOUTH, RANGE 28 EAST, N.M.P.M.,
EDDY COUNTY, NEW MEXICO.

| | |
|-------------------------|---------------------|
| Survey Date: 4/28/11 | Sheet 1 of 1 Sheets |
| W.O. Number: 11.11.0944 | Dr By: LA |
| Date: 5/12/11 | 11110944 |
| | Scale: 1"=100' |

PROVIDING SURVEYING SERVICES
SINCE 1946

JOHN WEST SURVEYING COMPANY
412 N. DAL PASO
HOBBS, N.M. 88240
(575) 393-3117

VICINITY MAP



SCALE: 1" = 2 MILES

SEC. 25 TWP. 17-S RGE. 28-E

SURVEY N.M.P.M.

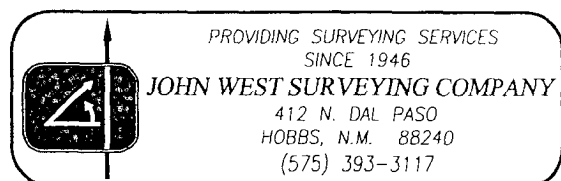
COUNTY EDDY STATE NEW MEXICO

DESCRIPTION 2340' FSL & 2310' FEL

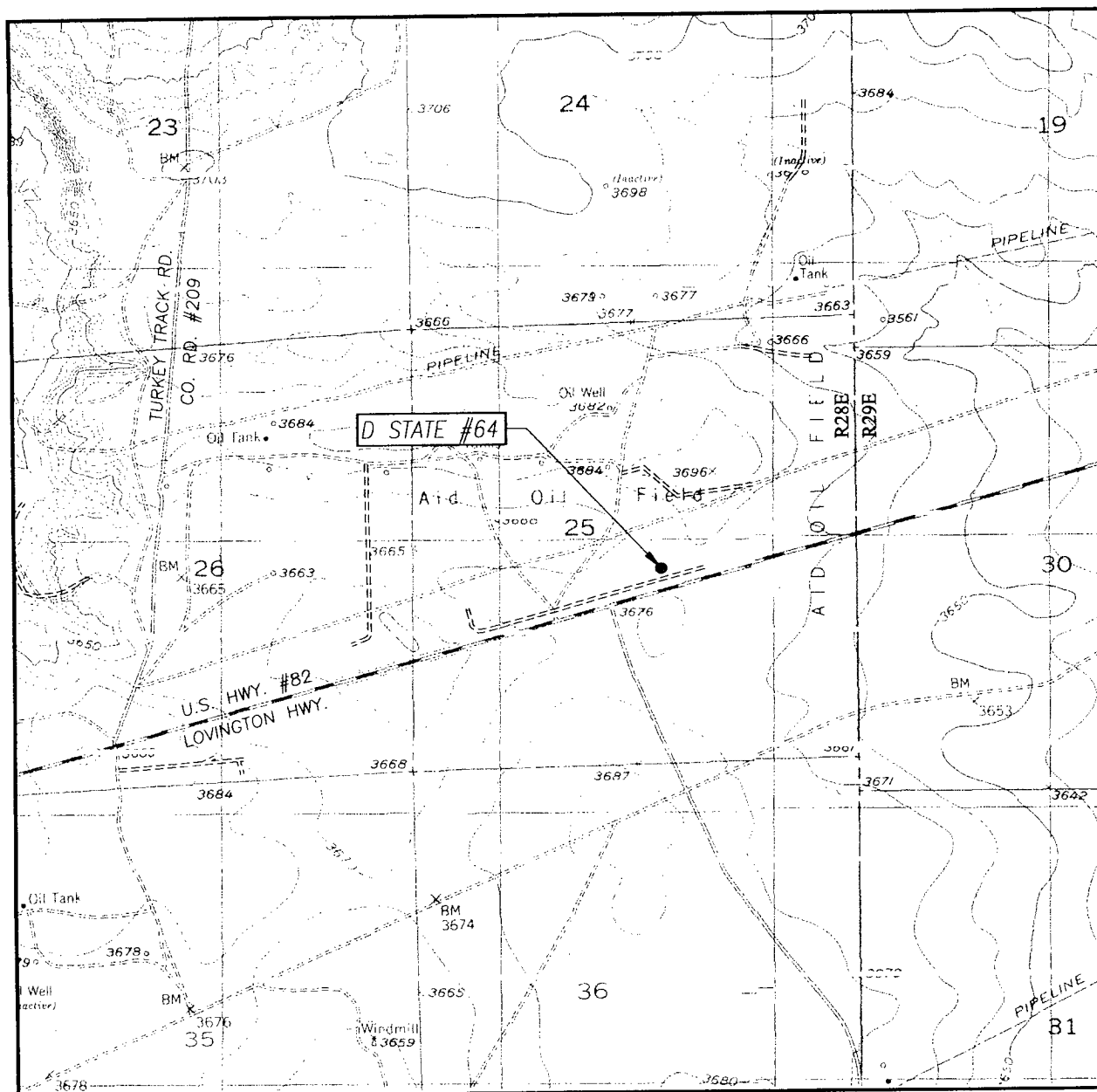
ELEVATION 3675'

OPERATOR APACHE CORPORATION

LEASE D STATE



NORTH



CONTOUR INTERVAL:
RED LAKE, N.M. - 10'
RED LAKE SE, N.M. - 10'

SURVEY N.M.P.M.

DESCRIPTION 2340' FSL & 2310' FEL

ELEVATION 3675'

OPERATOR APACHE CORPORATION

LEASE NB TWEEN STATE

U.S.G.S. TOPOGRAPHIC MAP
RED LAKE, N.M.

