

**District I**

1625 N. French Dr., Hobbs, NM 88240

**District II**

1301 W. Grand Avenue, Artesia, NM 88210

**District III**

1000 Rio Brazos Rd., Aztec, NM 87410

**District IV**

1220 S. St. Francis Dr., Santa Fe, NM 87505

## State of New Mexico

Energy, Minerals &amp; Natural Resources Department

## OIL CONSERVATION DIVISION

1220 South St. Francis Dr.

Santa Fe, NM 87505

Form C-102

Revised October 15, 2009

Submit one copy to appropriate

District Office

☐ AMENDED REPORT

## WELL LOCATION AND ACREAGE DEDICATION PLAT

<sup>1</sup> API Number <b>30-015-39104</b>	<sup>2</sup> Pool Code <b>96403</b>	<sup>3</sup> Pool Name <b>1<sup>st</sup> BONE SPRING SAND</b>
<sup>4</sup> Property Code <b>38600</b>	<sup>5</sup> Property Name <b>SNAPPING "2" STATE</b>	
<sup>6</sup> OGRID No. <b>6137</b>	<sup>7</sup> Operator Name <b>DEVON ENERGY PRODUCTION COMPANY, L.P.</b>	<sup>8</sup> Well Number <b>1H-Y</b>
		<sup>9</sup> Elevation <b>3240.4</b>

<sup>10</sup> Surface Location

UL or lot no.	Section	Township	Range	Lot Idn	Feet from the	North/South line	Feet from the	East/West line	County
<b>N</b>	<b>2</b>	<b>26 S</b>	<b>31 E</b>		<b>330</b>	<b>SOUTH</b>	<b>1710</b>	<b>WEST</b>	<b>EDDY</b>

<sup>11</sup> Bottom Hole Location If Different From Surface

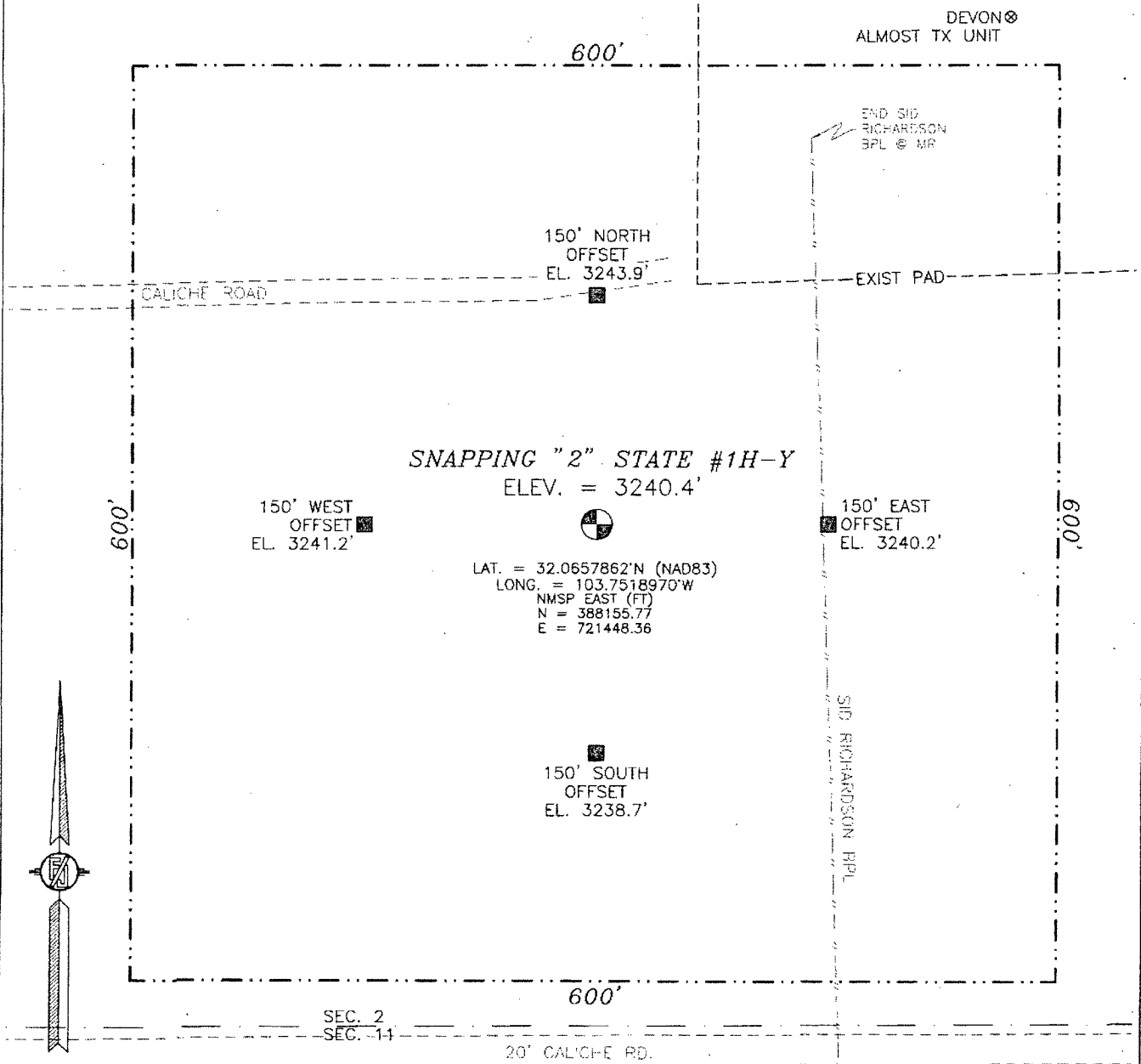
UL or lot no.	Section	Township	Range	Lot Idn	Feet from the	North/South line	Feet from the	East/West line	County
<b>C</b>	<b>2</b>	<b>26 S</b>	<b>31 E</b>		<b>330</b>	<b>NORTH</b>	<b>1660</b>	<b>WEST</b>	<b>EDDY</b>

<sup>12</sup> Dedicated Acres <b>320</b>	<sup>13</sup> Joint or Infill	<sup>14</sup> Consolidation Code	<sup>15</sup> Order No.
---	-------------------------------	----------------------------------	-------------------------

No allowable will be assigned to this completion until all interests have been consolidated or a non-standard unit has been approved by the division.

<p><b>BOTTOM OF HOLE</b> 1660'</p> <p><b>330'</b></p> <p><b>NE CORNER SEC. 2</b> LAT. = 32.0795016°N LONG. = 103.7402522°W NMSP EAST (FT) N = 393164.77 E = 725028.21</p> <p><b>NW CORNER SEC. 2</b> LAT. = 32.0794688°N LONG. = 103.7574336°W NMSP EAST (FT) N = 393123.30 E = 719706.10</p> <p><b>SW CORNER SEC. 2</b> LAT. = 32.0648854°N LONG. = 103.7574141°W NMSP EAST (FT) N = 387818.91 E = 719741.07</p> <p><b>1710'</b> <b>SURFACE LOCATION</b></p> <p><b>330'</b></p> <p><b>SNAPPING "2" STATE #1H-Y</b> ELEV. = 3240.4' LAT. = 32.0657862°N (NAD83) LONG. = 103.7518970°W NMSP EAST (FT) N = 388155.77 E = 721448.36</p> <p><b>SE CORNER SEC. 2 (CALC)</b> LAT. = 32.0648778°N LONG. = 103.7402679°W NMSP EAST (FT) N = 387844.87 E = 725048.38</p>	<p><b>17 OPERATOR CERTIFICATION</b> I hereby certify that the information contained herein is true and complete to the best of my knowledge and belief, and that this organization either owns a working interest or undivided mineral interest in the land including the proposed bottom hole location or has a right to drill this well at this location pursuant to a contract with an owner of such a mineral or working interest, or to a voluntary pooling agreement or a compulsory pooling order heretofore entered by the division.</p> <p><i>Judy A. Barnett</i> 6/6/11 Signature Date Printed Name Judy A. Barnett Regulatory Specialist</p> <p><b>18 SURVEYOR CERTIFICATION</b> I hereby certify that the well location shown on this plat was plotted from field notes of actual surveys made by me or under my supervision, and that the same is true and correct to the best of my belief.</p> <p>June 3, 2011 Date of Survey</p> <p><i>Frank J. Camillo</i> Signature and Seal of Professional Surveyor Certificate Number 12797 SURVEY NO. 422A</p>
---	--

SECTION 2, TOWNSHIP 26 SOUTH, RANGE 31 EAST, N.M.P.M.  
EDDY COUNTY, STATE OF NEW MEXICO



010 50 100 200

SCALE 1" = 100'

DIRECTIONS TO LOCATION

FROM STATE HWY 128 AND CR #1 (ORLA RD) GO SOUTH ON CR #1  
10.0 MILES TURN RIGHT ON CALICHE ROAD (ROSS LANE) AND GO  
WEST 4.8 MILES TURN RIGHT AND GO NORTH 0.1 MILE TURN RIGHT  
AND GO EAST 0.32 MILES, LOCATION IS 150' ON THE RIGHT (SOUTH).

DEVON ENERGY PRODUCTION COMPANY, L.P.

SNAPPING "2" STATE #1H-Y

LOCATED 330 FT. FROM THE SOUTH LINE  
AND 1710 FT. FROM THE WEST LINE OF  
SECTION 2, TOWNSHIP 26 SOUTH,  
RANGE 31 EAST, N.M.P.M.  
EDDY COUNTY, STATE OF NEW MEXICO

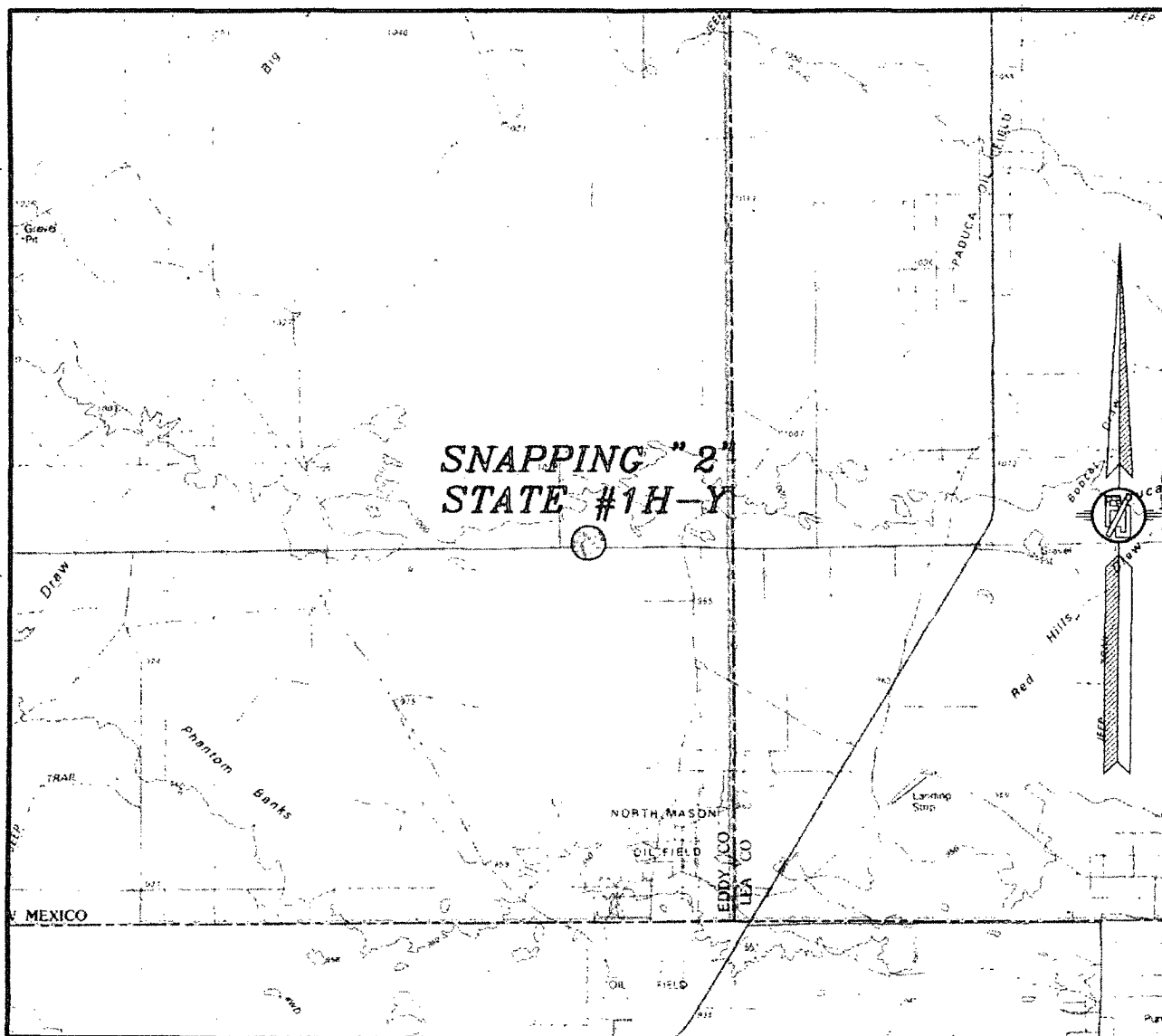
SURVEY NO. 422A

JUNE 3, 2011

MADRON SURVEYING, INC. 301 SOUTH CANAL (575) 887-5830 CARLSBAD, NEW MEXICO

SECTION 2, TOWNSHIP 26 SOUTH, RANGE 31 EAST, N.M.P.M.  
EDDY COUNTY, STATE OF NEW MEXICO

## VICINITY MAP



NOT TO SCALE

DEVON ENERGY PRODUCTION COMPANY, L.P.

**SNAPPING "2" STATE #1H-Y**

LOCATED 330 FT. FROM THE SOUTH LINE  
AND 1710 FT. FROM THE WEST LINE OF  
SECTION 2, TOWNSHIP 26 SOUTH,  
RANGE 31 EAST, N.M.P.M.  
EDDY COUNTY, STATE OF NEW MEXICO

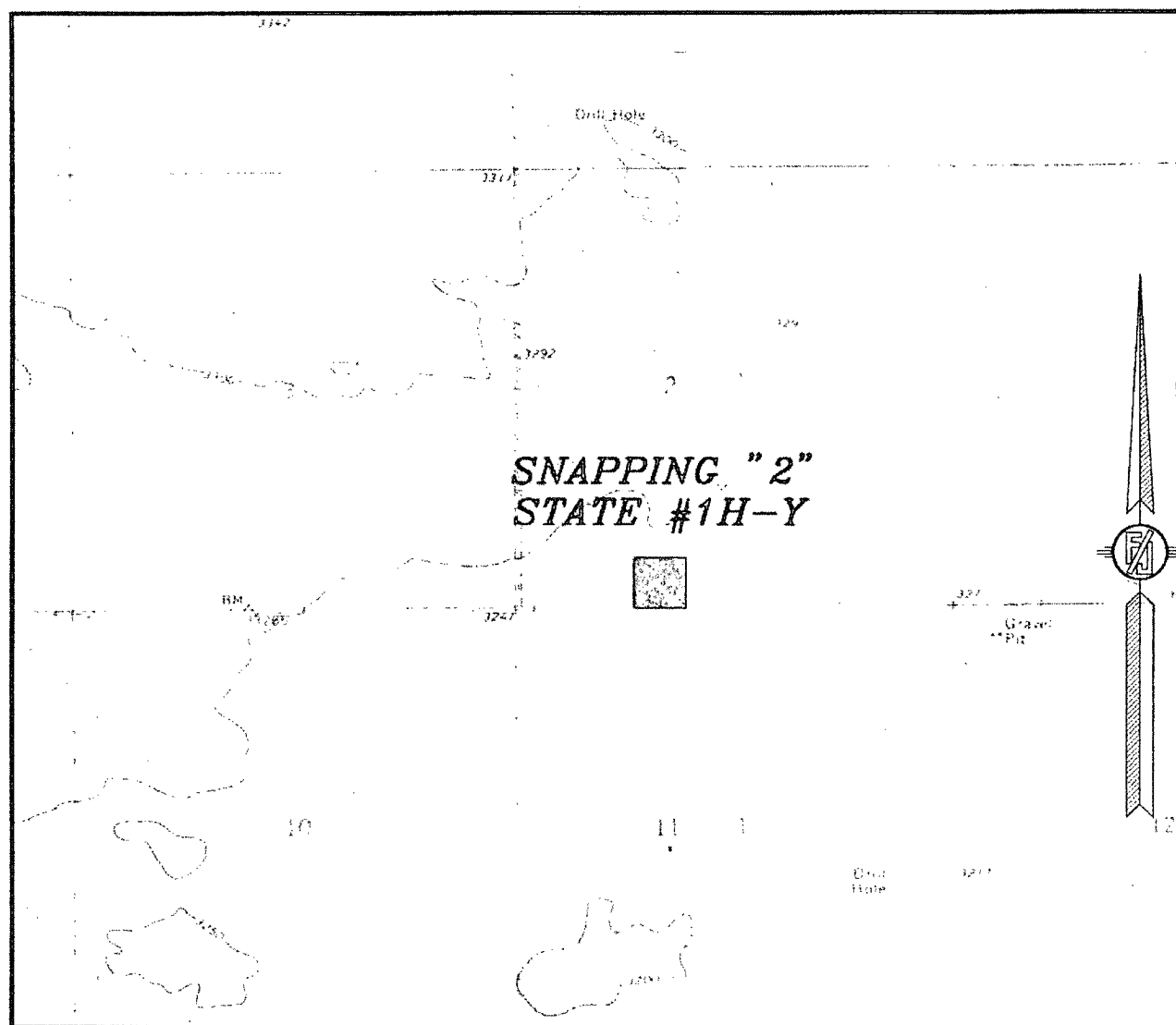
JUNE 3, 2011

SURVEY NO. 422A

MADRON SURVEYING, INC. 501 SOUTH CANAL CARLSBAD, NEW MEXICO  
(505) 887-5832

SECTION 2, TOWNSHIP 26 SOUTH, RANGE 31 EAST, N.M.P.M.  
EDDY COUNTY, STATE OF NEW MEXICO

## LOCATION VERIFICATION MAP



CONTOUR INTERVAL:  
PHANTOM BANKS  
PADUCA BREAKS WEST

NOT TO SCALE

DEVON ENERGY PRODUCTION COMPANY, L.P.

**SNAPPING "2" STATE #1H-Y**

LOCATED 330 FT. FROM THE SOUTH LINE  
AND 1710 FT. FROM THE WEST LINE OF  
SECTION 2, TOWNSHIP 26 SOUTH,  
RANGE 31 EAST, N.M.P.M.  
EDDY COUNTY, STATE OF NEW MEXICO

JUNE 3, 2011

SURVEY NO. 422A

MADRON SURVEYING, INC. 301 SOUTH CANAL CARLSBAD, NEW MEXICO  
(505) 257-5830

SECTION 2, TOWNSHIP 26 SOUTH, RANGE 31 EAST, N.M.P.M.  
EDDY COUNTY, STATE OF NEW MEXICO

## AERIAL PHOTO



NOT TO SCALE  
AERIAL PHOTO:  
GOOGLE EARTH  
USDA - AUG, 2009

DEVON ENERGY PRODUCTION COMPANY, L.P.

**SNAPPING "2" STATE #1H-Y**

LOCATED 330 FT. FROM THE SOUTH LINE  
AND 1710 FT. FROM THE WEST LINE OF  
SECTION 2, TOWNSHIP 26 SOUTH,  
RANGE 31 EAST, N.M.P.M.  
EDDY COUNTY, STATE OF NEW MEXICO

SURVEY NO. 422A

JUNE 3, 2011

MADRON SURVEYING, INC. 301 SOUTH CANAL (575) 257-5830 CARLSBAD, NEW MEXICO