

NO. OF COPIES RECEIVED	
DISTRIBUTION	
SANTA FE	1
FILE	1
U.S.G.S.	2
LAND OFFICE	1
OPERATOR	1

NEW MEXICO OIL CONSERVATION COMMISSION

RECEIVED

30-005-60644

Form C-101
Revised 1-1-65

JAN 29 1980

O. C. D.

ARTESIA OFFICE

5A. Indicate Type of Lease
STATE FEE

5. State Oil & Gas Lease No.
14628

APPLICATION FOR PERMIT TO DRILL, DEEPEN, OR PLUG BACK

1a. Type of Work
b. Type of Well
DRILL DEEPEN PLUG BACK
OIL WELL GAS WELL OTHER SINGLE ZONE MULTIPLE ZONE

2. Name of Operator
C. E. LaRue and B. N. Muncy, Jr.

3. Address of Operator
P. O. Box 196 Artesia, N. M. 88210

4. Location of Well
UNIT LETTER F LOCATED 2310 FEET FROM THE North LINE
AND 2310 FEET FROM THE West LINE OF SEC. 19 TWP. 6S RGE. 28E NMPM

7. Unit Agreement Name
8. Farm or Lease Name
Inexco State
9. Well No.
1
10. Field and Pool, or Well Unit
Wildcat
12. County
Chaves
14. Proposed Depth
2250'
15A. Formation
San Andres
16. Rotary or C.T.
Rotary
21. Elevations (Show whether DF, RT, etc.)
3965GL
21A. Kind & Status; Lug. Bend
Statewide
21B. Drilling Contractor
Artesia Fishing Tool
22. Approx. Date Work will start
2/17/80

PROPOSED CASING AND CEMENT PROGRAM

SIZE OF HOLE	SIZE OF CASING	WEIGHT PER FOOT	SETTING DEPTH	SACKS OF CEMENT	EST. TOP
12 1/4"	8 5/8"	20#	250'	125	Circulated
7 7/8"	4 1/2"	10 1/2#	2,250'	250	900'

APPROVAL VALID FOR 90 DAYS UNLESS DRILLING COMMENCED, EXPIRES 4-30-80

IN ABOVE SPACE DESCRIBE PROPOSED PROGRAM; IF PROPOSAL IS TO DEEPEN OR PLUG BACK, GIVE DATA ON PRESENT PRODUCTIVE ZONE AND PROPOSED NEW PRODUCTIVE ZONE, GIVE BLOWOUT PREVENTER PROGRAM, IF ANY.

I hereby certify that the information above is true and complete to the best of my knowledge and belief.

Signed [Signature] Title Operator Date 1/27/80

(This space for State Use)

APPROVED BY [Signature] TITLE SUPERVISOR, DISTRICT II DATE JAN 30 1980

CONDITIONS OF APPROVAL, IF ANY:

NL MEXICO OIL CONSERVATION COMMISSION
WELL LOCATION AND ACREAGE DEDICATION PLAT

Form C-102
Supersedes C-128
Effective 1-1-65

All distances must be from the outer boundaries of the Section.

Operator LaRue & Muncy, Jr.		Lease Inexco State		Well No. 1
Unit Letter F	Section 19	Township 6 South	Range 28 East	County Chaves
Actual Footage Location of Well: 2310 feet from the North line and 2310 feet from the West line				
Ground Level Elev: 3965	Producing Formation San Andres	Pool Wildcat	Dedicated Acreage: 40 Acres	

1. Outline the acreage dedicated to the subject well by colored pencil or hachure marks on the plat below.
2. If more than one lease is dedicated to the well, outline each and identify the ownership thereof (both as to working interest and royalty).
3. If more than one lease of different ownership is dedicated to the well, have the interests of all owners been consolidated by communitization, unitization, force-pooling, etc?

RECEIVED

JAN 29 1980

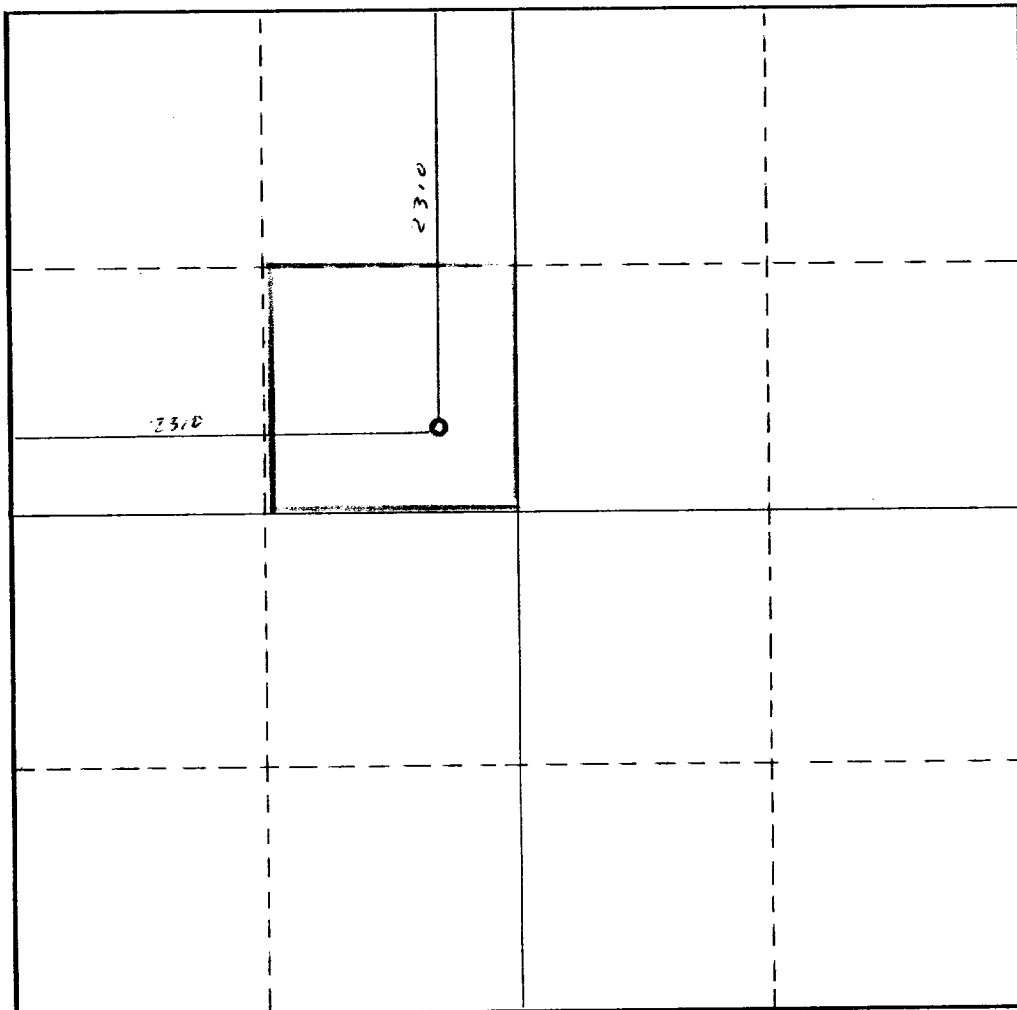
O. C. D.

APRESA, OFFICE

Yes No If answer is "yes," type of consolidation _____

If answer is "no," list the owners and tract descriptions which have actually been consolidated. (Use reverse side of this form if necessary.) _____

No allowable will be assigned to the well until all interests have been consolidated (by communitization, unitization, forced-pooling, or otherwise) or until a non-standard unit, eliminating such interests, has been approved by the Commission.



CERTIFICATION

I hereby certify that the information contained herein is true and complete to the best of my knowledge and belief.

Name
[Signature]
Position
Operator

Company
LaRue and Muncy

Date
January 27, 1980

I hereby certify that the well location shown on this plat was plotted from field notes of actual surveys made by me or under my supervision, and that the same is true and correct to the best of my knowledge and belief.

Date Surveyed
January 25, 1980

Registered Professional Engineer and/or Land Surveyor
[Signature]

Certificate No.
1502