

N. M. Oil Cons. Division

811 S. 1ST ST.

SUBMIT IN THE MANNER AND MANNER

ARTESIA, NM 88210-2894 (See instructions on reverse side)

FORM APPROVED  
OMB NO. 1004-0136  
Expires: February 28, 1995

Form 3160-3  
(July 1992)

UNITED STATES  
DEPARTMENT OF THE INTERIOR  
BUREAU OF LAND MANAGEMENT

APPLICATION FOR PERMIT TO DRILL OR DEEPEN

1a. TYPE OF WORK  
 DRILL  DEEPEN

b. TYPE OF WELL  
 OIL WELL  GAS WELL  OTHER  SINGLE ZONE  MULTIPLE ZONE

2. NAME OF OPERATOR  
 YATES PETROLEUM CORPORATION 25575

3. ADDRESS AND TELEPHONE NO.  
 105 South Fourth Street, Artesia, New Mexico 88210 (505)748-1471

4. LOCATION OF WELL (Report location clearly and in accordance with any State requirements.)\*  
 At surface  
 990' FNL and 990' FEL Unit letter A  
 At proposed prod. zone  
 Same

14. DISTANCE IN MILES AND DIRECTION FROM NEAREST TOWN OR POST OFFICE\*  
 Approx. 42 miles north and east of Roswell, NM

10. DISTANCE FROM PROPOSED\* LOCATION TO NEAREST PROPERTY OR LEASE LINE, FT. (Also to nearest drlg. unit line, if any)  
 2,040

16. NO. OF ACRES IN LEASE  
 2,040

17. NO. OF ACRES ASSIGNED TO THIS WELL  
 160

18. DISTANCE FROM PROPOSED LOCATION\* TO NEAREST WELL, DRILLING, COMPLETED, OR APPLIED FOR, ON THIS LEASE, FT.  
 4300'

19. PROPOSED DEPTH  
 4300'

20. ROTARY OR CABLE TOOLS  
 Rotary

21. ELEVATIONS (Show whether DF, RT, GR, etc.)  
 3918' GR

22. APPROX. DATE WORK WILL START\*  
 July 1996

5. LEASE DESIGNATION AND SERIAL NO.  
 NM-14755

6. IF INDIAN, ALLOTTEE OR TRIBE NAME

7. UNIT AGREEMENT NAME  
 12652

8. FARM OR LEASE NAME, WELL NO.  
 Powers OL Fed. Com. #13

9. API WELL NO.  
 30-005-63096

10. FIELD AND POOL, OR WILDCAT  
 Pecos Slope Abo 82730

11. SEC., T., R., M., OR BLK. AND SURVEY OR AREA  
 Sec. 15-T6S-R25E

12. COUNTY OR PARISH  
 Chaves

13. STATE  
 NM

PROPOSED CASING AND CEMENTING PROGRAM

SIZE OF HOLE	GRADE, SIZE OF CASING	WEIGHT PER FOOT	SETTING DEPTH	QUANTITY OF CEMENT
17 1/2"	13 3/8" J-55	48#	900'	700 sx
* 12 1/4"	8 5/8" J-55	24#	1600'	300 sx
7 7/8"	4 1/2" J-55	10.5#	TD	350 sx

Yates Petroleum Corporation proposes to drill and test the Abo and intermediate formations. Approx. 900' of surface casing will be set and cement circulated to the surface. (\*If lost circulation is encountered 8 5/8" intermediate casing will be set to approx. 1600'. Hole size would then be reduced to 7 7/8".) If commercial, production casing will be ran and cemented with adequate cover, perforated and stimulated as needed for production.

MUD PROGRAM: FW Gel/LCM 0-900'; Cut Brine 900'-3000'; SW Gel/Starch/Oil 3000' to TD.

BOPE PROGRAM: BOPE will be installed on the 9 5/8" casing and tested daily for operational

GAS NOT DEDICATED

Post ID-1  
6-21-96  
New Loc & API

IN ABOVE SPACE DESCRIBE PROPOSED PROGRAM: If proposal is to deepen, give data on present productive zone and proposed new productive zone. If proposal is to drill or deepen directionally, give pertinent data on subsurface locations and measured and true vertical depths. Give blowout preventer program, if any.

24. SIGNED Clifton R. May TITLE Regulatory Agent DATE 5-15-96

(This space for Federal or State office use)

PERMIT NO. \_\_\_\_\_ APPROVAL DATE \_\_\_\_\_

Application approval does not warrant or certify that the applicant holds legal or equitable title to those rights in the subject lease which would entitle the applicant to conduct operations thereon.  
 CONDITIONS OF APPROVAL, IF ANY:

APPROVED BY J. R. Kruger TITLE Area Manager DATE 4/12/96  
 \*See Instructions On Reverse Side

District I  
 PO Box 1980, Hobbs, NM 88241-1980  
 District II  
 PO Drawer DD, Artesia, NM 88211-0719  
 District III  
 1000 Rio Brazos Rd., Aztec, NM 87410  
 District IV  
 PO Box 2088, Santa Fe, NM 87504-2088

State of New Mexico  
 Energy, Minerals & Natural Resources Department

OIL CONSERVATION DIVISION  
 PO Box 2088  
 Santa Fe, NM 87504-2088

Form C-102  
 Revised February 10, 1994  
 Instructions on back  
 Submit to Appropriate District Office  
 State Lease - 4 Copies  
 Fee Lease - 3 Copies

AMENDED REPORT

WELL LOCATION AND ACREAGE DEDICATION PLAT

API Number 30-005-63096		Pool Code 82730	Pool Name PECOS SLOPE ABO
Property Code	Property Name POWERS "OL" FEDERAL COM.		Well Number 13
OGRID No. 025575	Operator Name YATES PETROLEUM CORPORATION		Elevation 3918

10 Surface Location

UL or lot no.	Section	Township	Range	Lot Idn	Feet from the	North/South line	Feet from the	East/West line	County
A	15	6S	25E		990	NORTH	990	EAST	CHAVES

11 Bottom Hole Location If Different From Surface

UL or lot no.	Section	Township	Range	Lot Idn	Feet from the	North/South line	Feet from the	East/West line	County

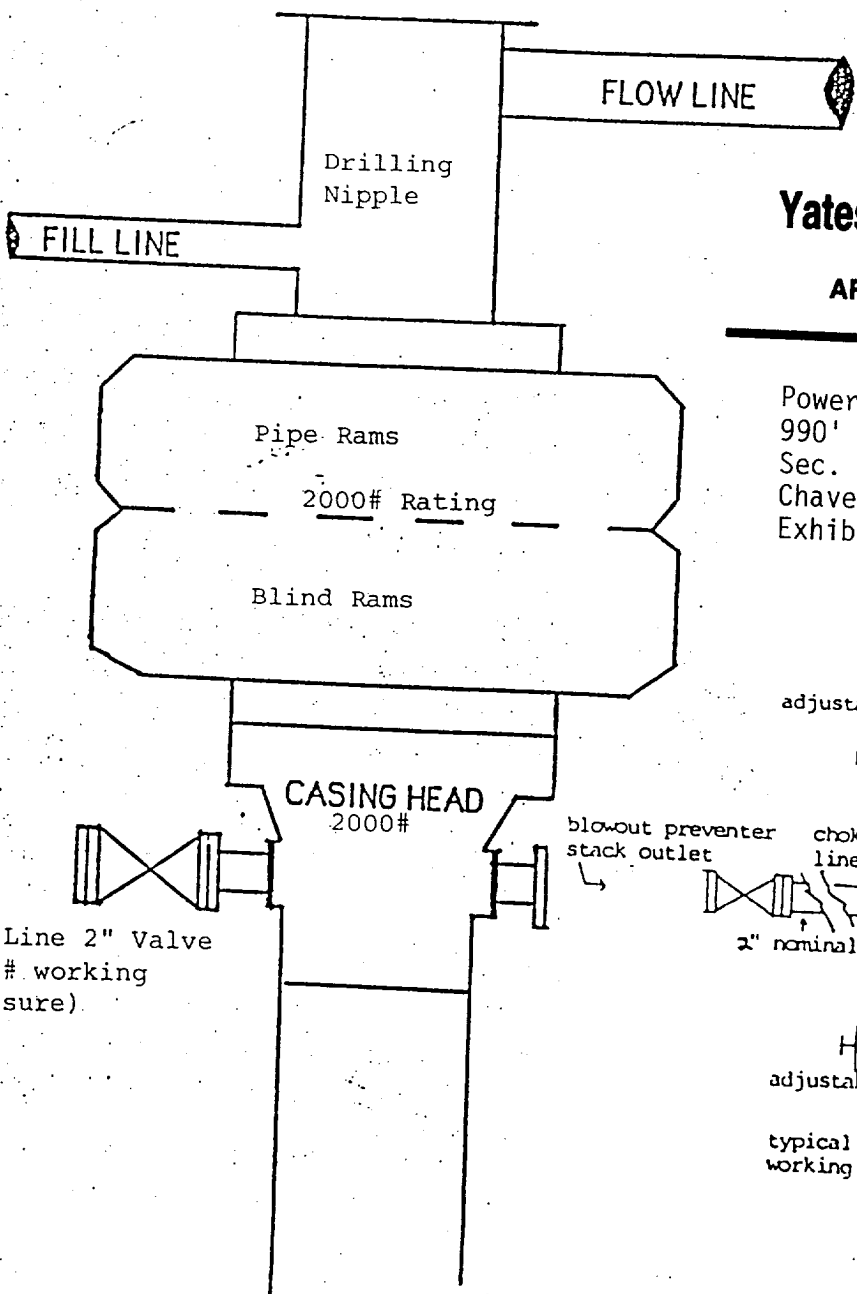
Dedicated Acres 160	Joint or Infill	Consolidation Code	Order No.
------------------------	-----------------	--------------------	-----------

NO ALLOWABLE WILL BE ASSIGNED TO THIS COMPLETION UNTIL ALL INTERESTS HAVE BEEN CONSOLIDATED OR A NON-STANDARD UNIT HAS BEEN APPROVED BY THE DIVISION

16			<p>17 OPERATOR CERTIFICATION</p> <p>I hereby certify that the information contained herein is true and complete to the best of my knowledge and belief</p> <p><i>Clifton R. May</i>          Signature          Clifton R. May          Printed Name          Regulatory Agent          Title          5-16-96          Date</p>
	<p>18 SURVEYOR CERTIFICATION</p> <p>I hereby certify that the well location shown on this plat was plotted from field notes of actual surveys made by me or under my supervision, and that the same is true and correct to the best of my belief.</p> <p>5/02/96          Date of Survey          HERSHELL JONES          Signature          Registered Professional Surveyor          NEW MEXICO          3640          REGISTERED PROFESSIONAL LAND SURVEYOR          Certificate Number 3640</p>		

# YATES PETROLEUM CORPORATION

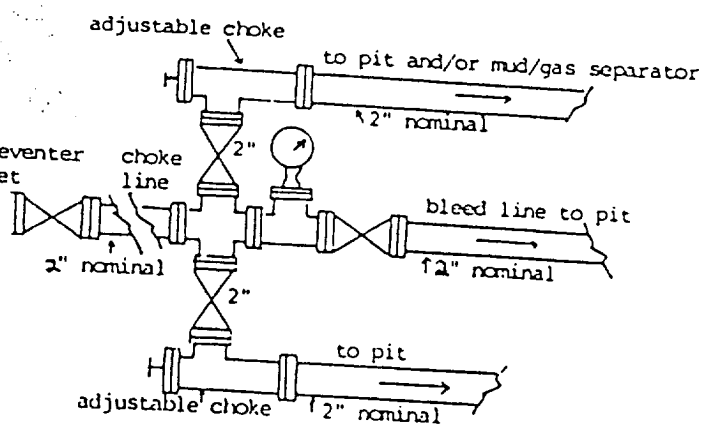
MAY 20 1 53 PM '70



**Yates Petroleum Corporation**  
105 SOUTH 4th STREET  
ARTESIA, NEW MEXICO 88210

Powers OL Fed. Com. #13  
990' FNL and 990' FEL  
Sec. 15-T6S-R25E  
Chaves County, New Mexico  
Exhibit B

Kill Line 2" Valve  
(2000# working pressure)



typical choke manifold assembly for 2M rated working pressure service-surface installation

**BLOWOUT PREVENTER  
2M SYSTEM**