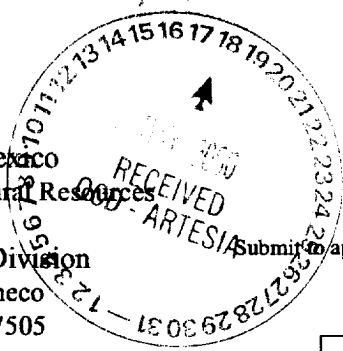


CISF
BLM
S&W
dp



Form C-101
Revised March 17, 1999

District I
1625 N. French Dr., Hobbs, NM 88240
District II
811 South First, Artesia, NM 88210
District III
1000 Rio Brazos Road, Aztec, NM 87410
District IV
2040 South Pacheco, Santa Fe, NM 87505

State of New Mexico
Energy Minerals and Natural Resources
Oil Conservation Division
2040 South Pacheco
Santa Fe, NM 87505

Submit to appropriate District Office
State Lease - 6 Copies
Fee Lease - 5 Copies

AMENDED REPORT

APPLICATION FOR PERMIT TO DRILL, RE-ENTER, DEEPEN, PLUGBACK, OR ADD A ZONE

¹ Operator Name and Address Reliance Energy, Inc. P.O. Box 10946, Midland, Texas 79702		² OGRID Number 149441
		³ API Number 30-005-63249
⁴ Property Code 25900	⁵ Property Name Willow Spring "28" State	⁶ Well No. 1

UL or lot no.	Section	Township	Range	Lot Idn	Feet from the	North/South line	Feet from the	East/West line	County
P	28	4S	25E		660	South	660	East	Chaves

⁸ Proposed Bottom Hole Location If Different From Surface

UL or lot no.	Section	Township	Range	Lot Idn	Feet from the	North/South line	Feet from the	East/West line	County
⁹ Proposed Pool 1 Pecos Slope Abo					¹⁰ Proposed Pool 2				

¹¹ Work Type Code N	¹² Well Type Code G	¹³ Cable/Rotary R	¹⁴ Lease Type Code S	¹⁵ Ground Level Elevation 3817
¹⁶ Multiple N	¹⁷ Proposed Depth 4250	¹⁸ Formation Abo	¹⁹ Contractor United Drlg	²⁰ Spud Date June 15, 2000

²¹ Proposed Casing and Cement Program

Hole Size	Casing Size	Casing weight/foot	Setting Depth	Sacks of Cement	Estimated TOC
14-3/4"	11-3/4"	38#	800'	350	surface
11"	8-5/8"	24#	1800'	350	1200'
7-7/8"	5-1/2"	15.5#	4250'	350	3250'

²² Describe the proposed program. If this application is to DEEPEN or PLUG BACK, give the data on the present productive zone and proposed new productive zone.

Describe the blowout prevention program, if any. Use additional sheets if necessary. Approximately 800' surface casing will be set and cemented to shut off gravel. 11" hole will be air drilled with intermediate casing set at 1800'. 7-7/8" hole will be air drilled to TD at 4250'. Production casing will be set at TD and cemented. The Abo will be stimulated as needed.

BOP Program: 1000 psi annular preventor will be installed on 8-5/8"; rotating head used while air drilling.

²³ I hereby certify that the information given above is true and complete to the best of my knowledge and belief.		OIL CONSERVATION DIVISION	
Signature: <i>Clyde C. Wheeler</i>	Approved by: ORIGINAL SIGNED BY TIM W. GUM		BGA
Printed name: CLYDE C. WHEELER	Title: DISTRICT II SUPERVISOR		
Title: Petroleum Engineer	Approval Date: MAY 18 2000	Expiration Date: MAY 18 2001	
Date: 5-15-00	Phone: (915) 683-4816	Conditions of Approval: Notify OCD at SPUD & TIME to witness cementing the casing.	

11 3/4" casing.

DISTRICT I
 P. O. Box 1980
 Hobbs, NM 88241-1980

State of New Mexico
 Dept. of Geology, Minerals, and Natural Resources Department

Form C-102
 Revised 02-10-94

Instructions on back

DISTRICT II
 P. O. Drawer DD
 Artesia, NM 88211-0719

Submit to the Appropriate
 District Office
 State Lease - 4 copies
 Fee Lease - 3 copies

DISTRICT III
 1000 Rio Brazos Rd.
 Aztec, NM 87410

OIL CONSERVATION DIVISION
 P. O. Box 2088
 Santa Fe, New Mexico 87504-2088

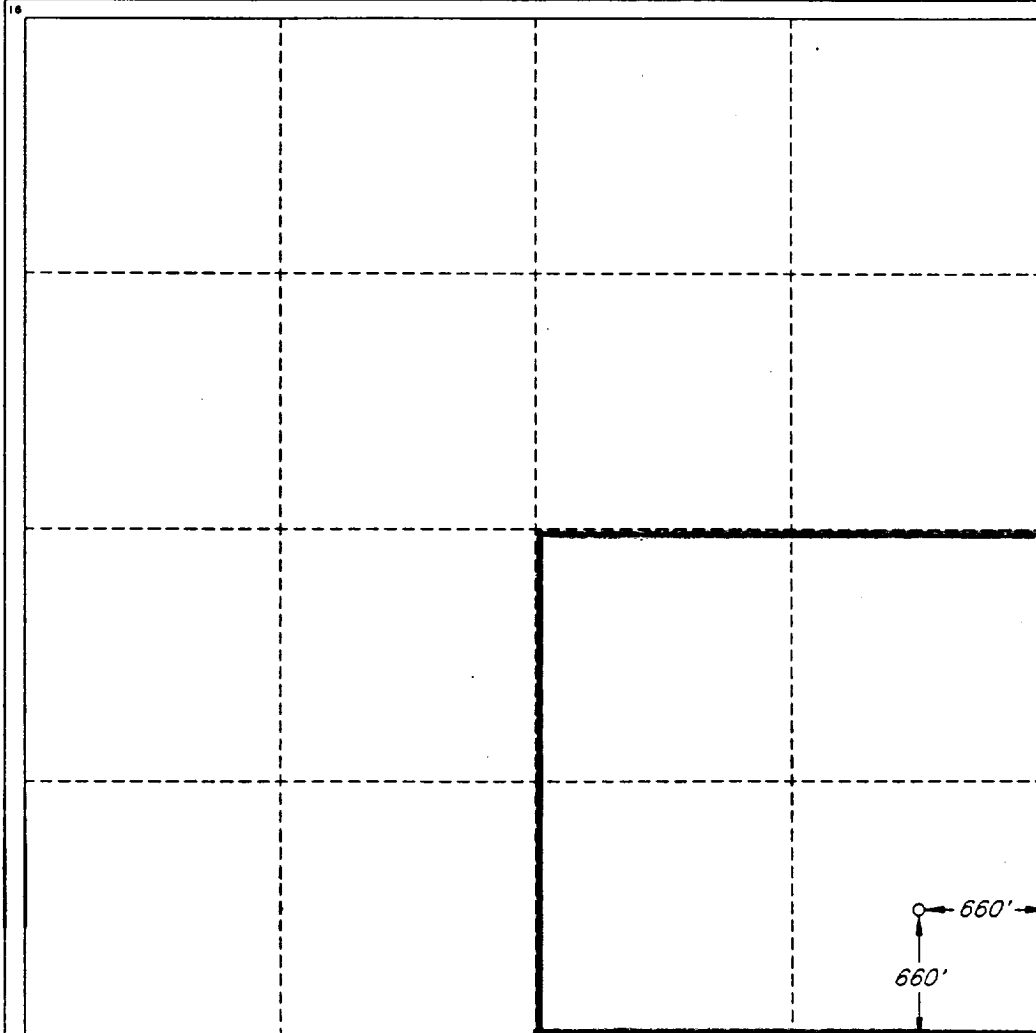
AMENDED REPORT

DISTRICT IV
 P. O. Box 2088
 Santa Fe, NM 87507-2088

WELL LOCATION AND ACREAGE DEDICATION PLAT

1 API Number		2 Pool Code		3 Pool Name Pecos Slope Abo					
4 Property Code		5 Property Name WILLOW SPRING '28' STATE					6 Well Number 1		
7 OGRID No. 149441		8 Operator Name RELIANCE ENERGY INCORPORATED					9 Elevation 3817'		
10 SURFACE LOCATION									
UL or lot no. P	Section 28	Township 4 SOUTH	Range 25 EAST, N.M.P.M.	Lot Ida	Feet from the 660'	North/South line SOUTH	Feet from the 660'	East/West line EAST	County CHAVES
11 BOTTOM HOLE LOCATION IF DIFFERENT FROM SURFACE									
UL or lot no.	Section	Township	Range	Lot Ida	Feet from the	North/South line	Feet from the	East/West line	County
12 Dedicated Acres 160.0		13 Joint or Infill N		14 Consolidation Code		15 Order No.			

NO ALLOWABLE WELL BE ASSIGNED TO THIS COMPLETION UNTIL ALL INTERESTS HAVE BEEN CONSOLIDATED OR A NON-STANDARD UNIT HAS BEEN APPROVED BY THE DIVISION



OPERATOR CERTIFICATION

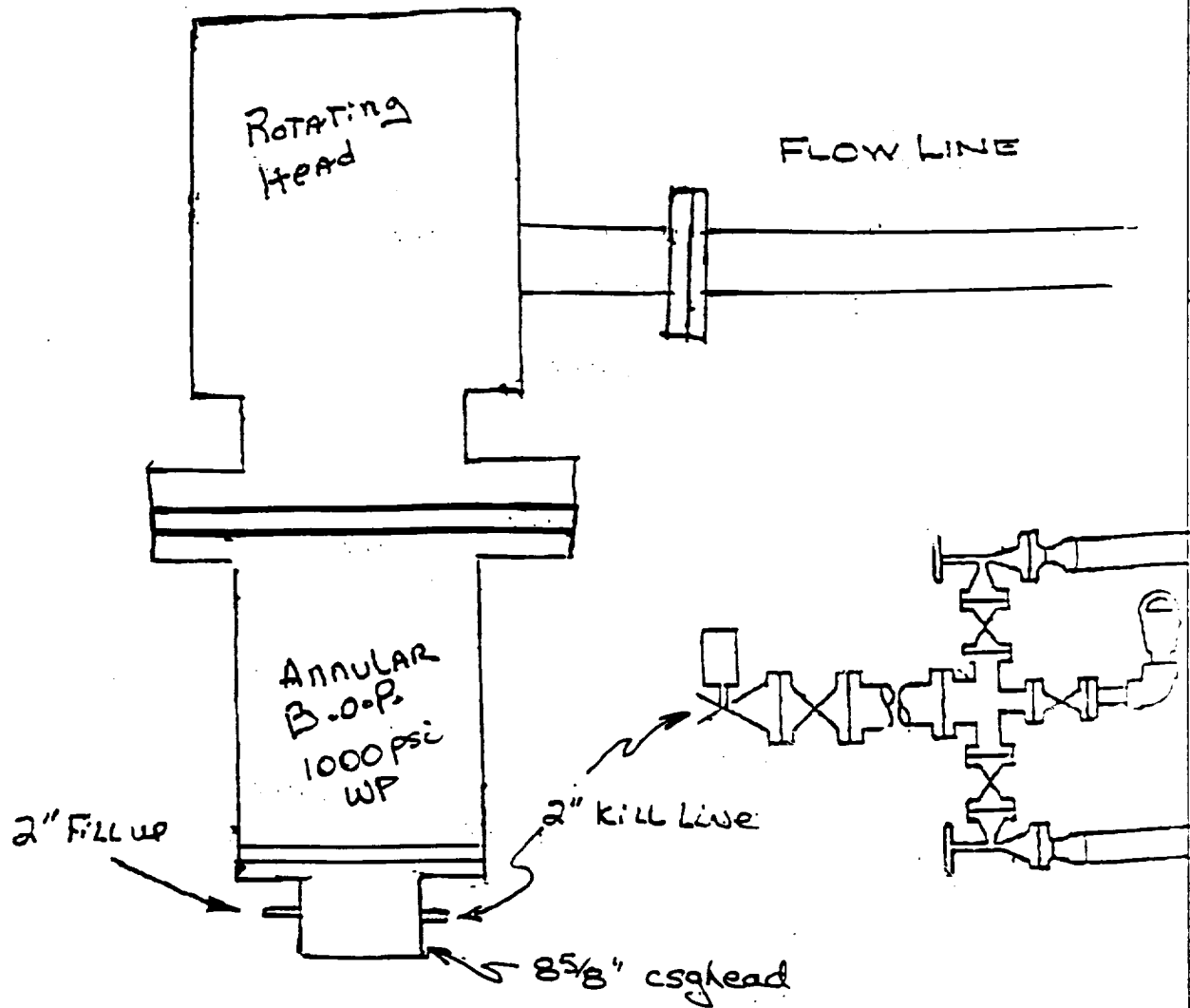
I hereby certify that the information contained herein is true and complete to the best of my knowledge and belief.

Signature
Clyde C. Wheeler
 Printed Name
 CLYDE C. WHEELER
 Title
 Petroleum Engineer
 Date
 5-15-00

SURVEYOR CERTIFICATION

I hereby certify that the well location shown on this plat was plotted from field notes of actual surveys made by me or under my supervision, and that the same is true and correct to the best of my belief.

Date of Survey
 MAY 3, 2000
 Signature and Seal of Professional Surveyor
V. L. Bezner
 Certificate No.
 V. L. BEZNER R.P.S. #7920
 JOB #68947 / 200 NE / V.H.B.



Reliance Energy, Inc.
 Willow Spring "28" State No. 1
 Chaves County, NM.