

N. MEXICO GEOLOGICAL SURVEY DIVISION COMMISSION  
 WELL LOCATION AND ACREAGE DEDICATION PLAT

Form G-192  
 Supersedes G-12B  
 Effective 1-1-65

All dimensions must be from the center line of the Section

J. D. Sandefer, III		C. E. McClain		Well No. 1
J	21	T2S	R28E	County DE BACA
Total Feet to Location of Well:				
1977.44	feet from the SOUTH	1981.75	feet from the EAST	Line
4175.35	Protractor Direction Wildcat	Undesignated	40	Acres

1. Outline the acreage dedicated to the subject well by colored pencil or hachure marks on the plat below.
2. If more than one lease is dedicated to the well, outline each and identify the ownership thereof (both as to working interest and royalty).
3. If more than one lease of different ownership is dedicated to the well, have the interests of all owners been consolidated by communitization, unitization, force-pooling, etc?

RECEIVED

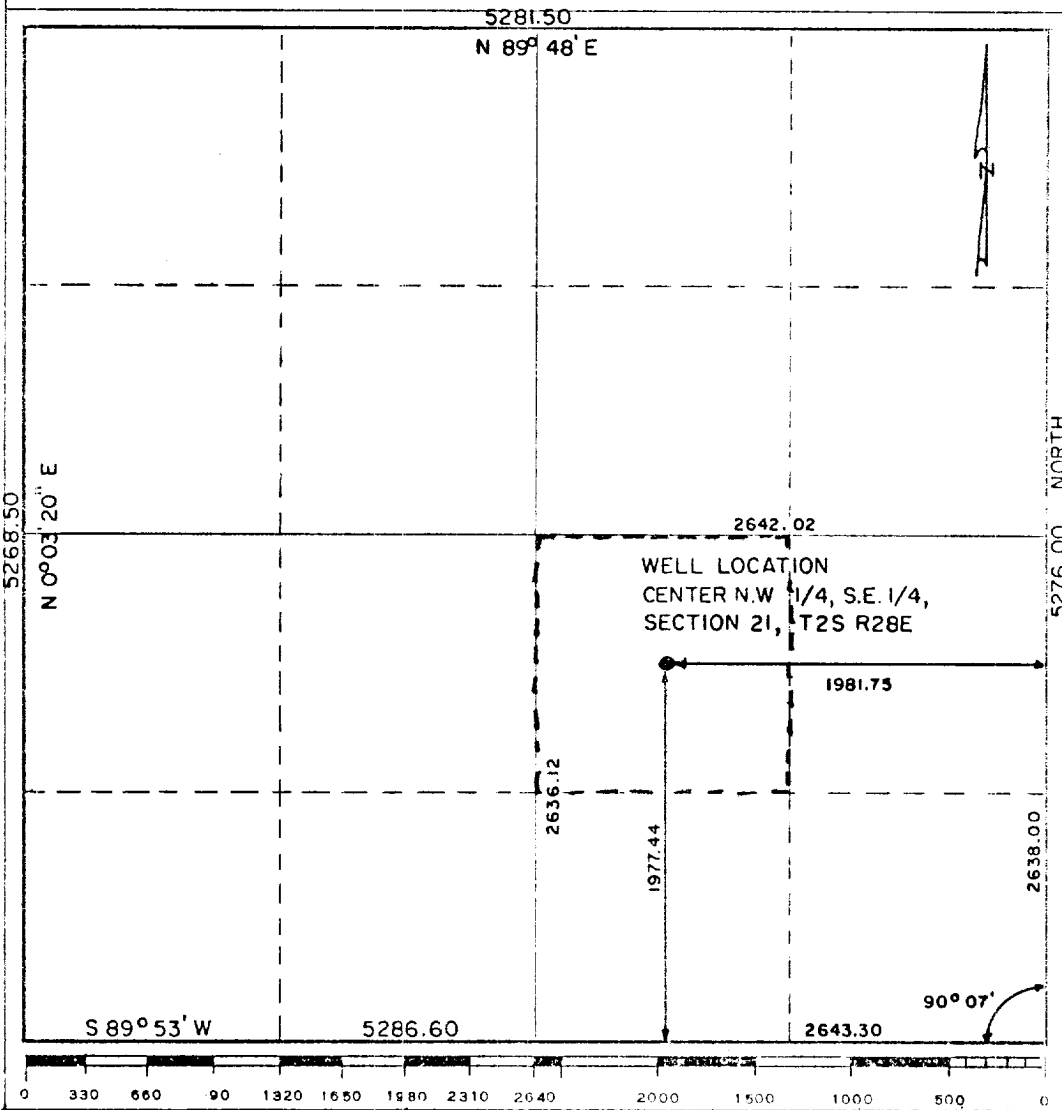
MAR - 4 1974

Yes  No If answer is "yes" type of consolidation \_\_\_\_\_

If answer is "no," list the owners and tract descriptions which have actually been consolidated. (Use reverse side of this form if necessary.) \_\_\_\_\_

O.C.G. of ARTESIA, OFFICE

No allowable will be assigned to the well until all interests have been consolidated (by communitization, unitization, forced-pooling, or otherwise) or until a non-standard unit, eliminating such interests, has been approved by the Commission.



CERTIFICATION

I hereby certify that the information contained herein is true and complete to the best of my knowledge and belief.

*W. G. Arnot, Jr.*

W. G. Arnot, Jr.

Engineer

J. D. Sandefer, III

4 March 1974

I hereby certify that the well location shown on this plat was plotted from field notes of actual surveys made by me or under my supervision, and that the same is true and correct to the best of my knowledge and belief.

2-25-74

Registered Professional Engineer and/or Land Surveyor

*Robert J. Lydick*

N.M. 2221

