

30-029-20008

NEW MEXICO OIL CONSERVATION COMMISSION RECEIVED

Form C-101 Revised 1-1-65

OCT 27 1981

O. C. D.

ARTESIA OFFICE

NO. OF COPIES RECEIVED		
DISTRIBUTION		
SANTA FE	1	
FILE	1	/
U.S.G.S.	2	
LAND OFFICE		
OPERATOR	1	

5A. Indicate Type of Lease
STATE FEE

5. State Oil & Gas Lease No.

APPLICATION FOR PERMIT TO DRILL, DEEPEN, OR PLUG BACK

1a. Type of Work
b. Type of Well DRILL DEEPEN PLUG BACK

c. Type of Well OIL WELL GAS WELL OTHER SINGLE ZONE MULTIPLE ZONE

2. Name of Operator SEVILLE-TRIDENT CORPORATION

3. Address of Operator Energy Square, Suite 203, 505 North Big Spring Street, Midland, Texas

4. Location of Well UNIT LETTER M LOCATED 330 FEET FROM THE South 79701 LINE AND 330 FEET FROM THE West LINE OF SEC. 26 TWP. 23-S RGE. 8-W NMPM

7. Unit Agreement Name

8. Farm or Lease Name Goldsmith

9. Well No. 1

10. Field and Pool, or Wildcat Wildcat

12. County Luna

19. Proposed Depth 7500' 19A. Formation Paleozoic 20. Rotary or C.T. Rotary

21. Elevations (Show whether D.P., K.I., etc.) 4243' G.L. 21A. Kind & Status Plug. Bond 50,000 Blanket 21B. Drilling Contractor Undetermined 22. Approx. Date Work will start November 15, 1981

23. #1SE-587-096 PROPOSED CASING AND CEMENT PROGRAM

SIZE OF HOLE	SIZE OF CASING	WEIGHT PER FOOT	SETTING DEPTH	SACKS OF CEMENT	EST. TOP
17 1/2"	13 3/8"	48	950'	900	Surface
11"	8 5/8"	24 & 32	3300'	1200	Surface
7 7/8"	4 1/2"	10.6	7500'	500	6000'

Blowout preventer diagram is attached.

Gas is not dedicated.

Posted ID-1
API + NL Book
11-6-81

APPROVAL VALID FOR 180 DAYS
PERMIT EXPIRES 5-2-82
UNLESS DRILLING UNDERWAY

IN ABOVE SPACE DESCRIBE PROPOSED PROGRAM: IF PROPOSAL IS TO DEEPEN OR PLUG BACK, GIVE DATA ON PRESENT PRODUCTIVE ZONE AND PROPOSED NEW PRODUCTIVE ZONE. GIVE BLOWOUT PREVENTER PROGRAM, IF ANY.

I hereby certify that the information above is true and complete to the best of my knowledge and belief.

Signed Bill D. Baker, Agent Date 26 October 1981

APPROVED BY W.A. Gressett, SUPERVISOR, DISTRICT II DATE NOV 02 1981

CONDITIONS OF APPROVAL, IF ANY:

Cement must be circulated to surface behind 13 3/8" 48 5/8" casing

OIL CONSERVATION DIVISION

STATE OF NEW MEXICO
ENERGY AND MINERALS DEPARTMENT

P. O. BOX 2088
SANTA FE, NEW MEXICO 87501

Form C-102
Revised 10-1-78

All distances must be from the outer boundaries of the Section.

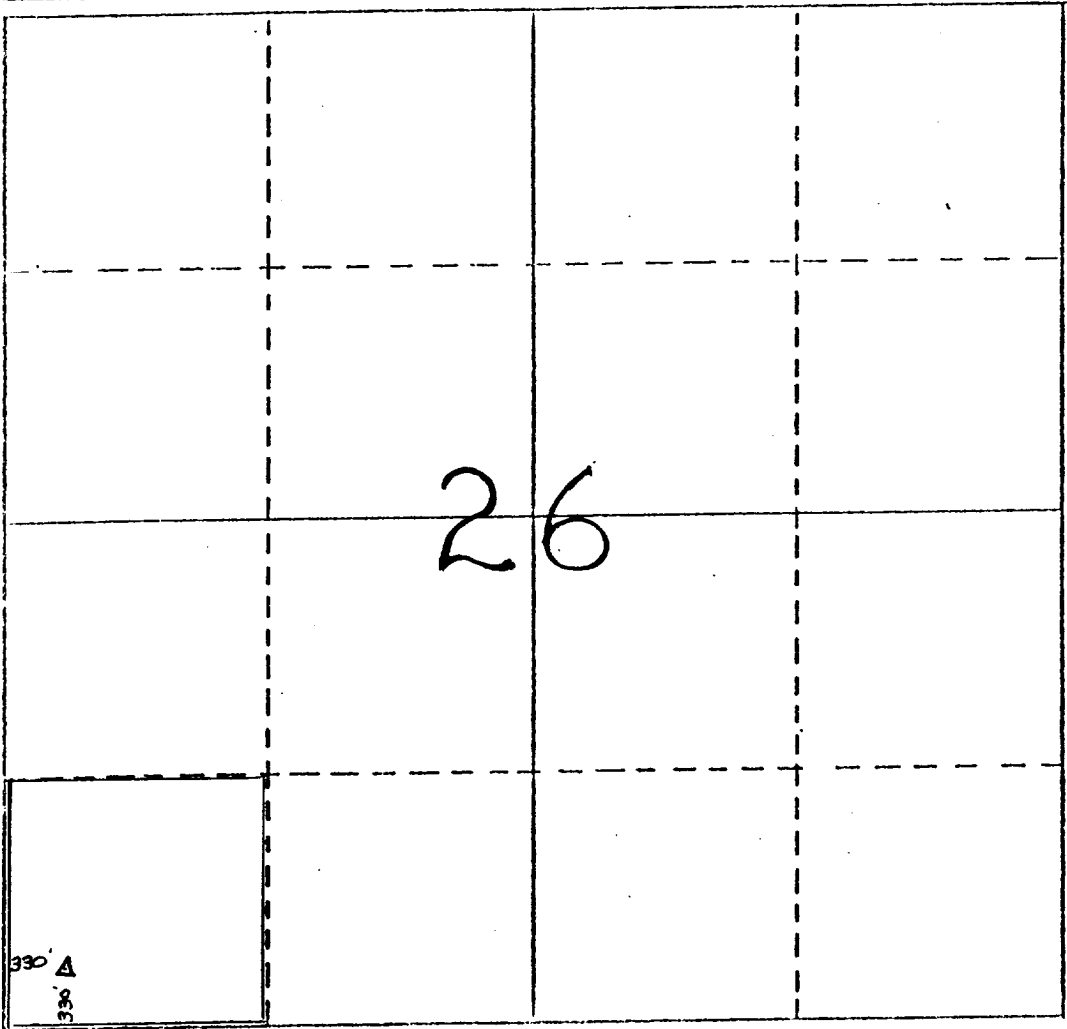
Operator SEVILLE-TRIDENT CORPORATION		Lease Goldsmith		Well No. 1
Unit Letter M	Section 26	Township 23 S.	Range 8 W.	County LUNA
Actual Footage Location of Well: 330 feet from the SOUTH line and 330 feet from the WEST line				
Ground Level Elev. 4243	Producing Formation Paleozoic	Pool Wildcat	Dedicated Acreage: 40 Acres	

1. Outline the acreage dedicated to the subject well by colored pencil or hachure marks on the plat below.
2. If more than one lease is dedicated to the well, outline each and identify the ownership thereof (both as to working interest and royalty).
3. If more than one lease of different ownership is dedicated to the well, have the interests of all owners been consolidated by communitization, unitization, force-pooling, etc?

Yes No If answer is "yes," type of consolidation _____

If answer is "no," list the owners and tract descriptions which have actually been consolidated. (Use reverse side of this form if necessary.) _____

No allowable will be assigned to the well until all interests have been consolidated (by communitization, unitization, forced-pooling, or otherwise) or until a non-standard unit, eliminating such interests, has been approved by the Division.



CERTIFICATION

I hereby certify that the information contained herein is true and complete to the best of my knowledge and belief.

Bill D. Baker

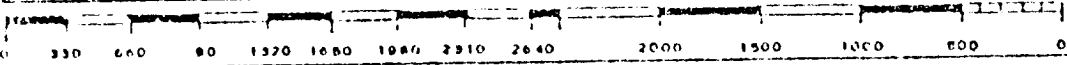
Name Bill D. Baker
Position Agent
Company SEVILLE-TRIDENT CORPORATION
Date 26 October 1981

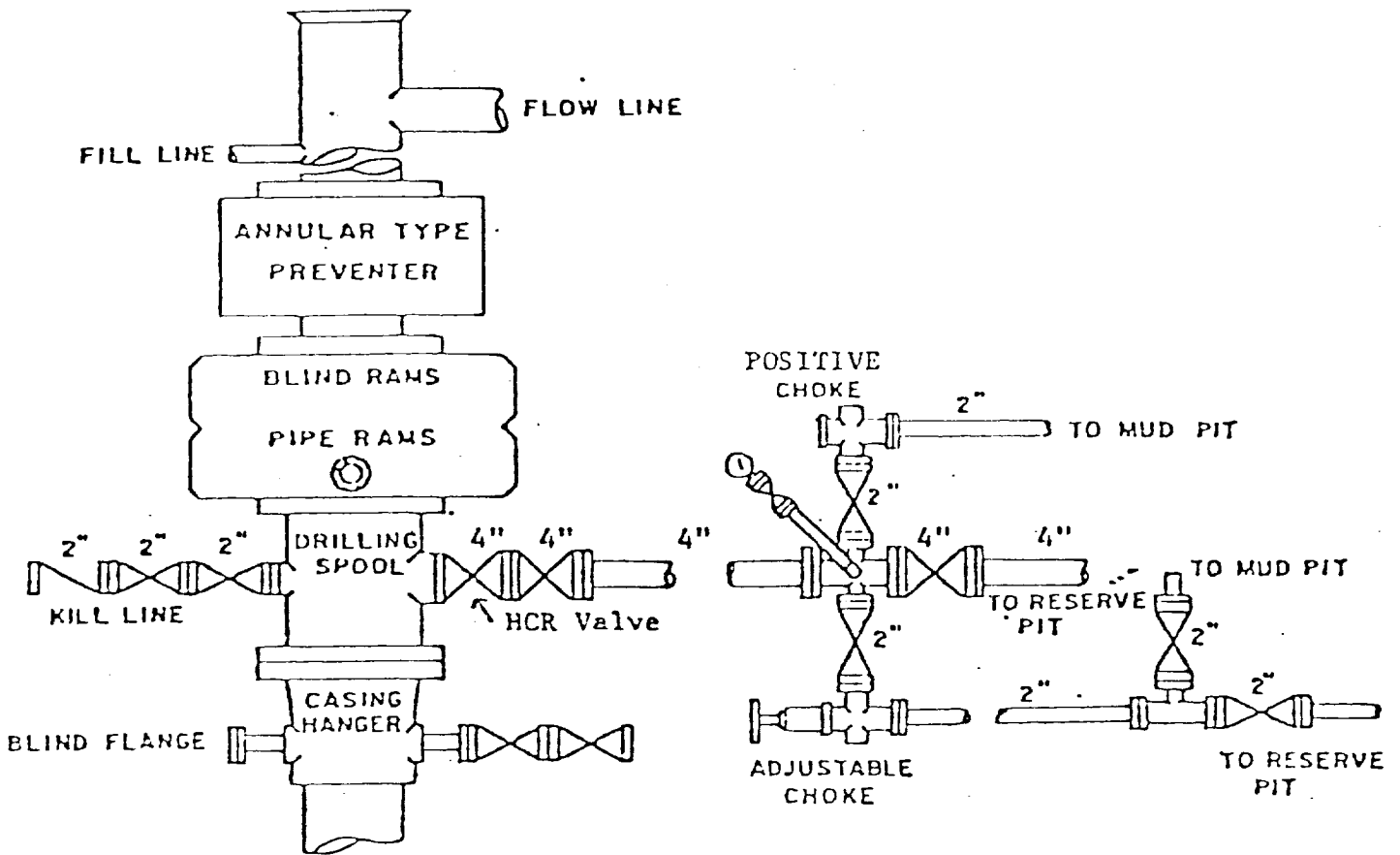
I hereby certify that the well location shown on this plat was plotted from field notes of actual surveys made by me or under my supervision, and that the same is true and correct to the best of my knowledge and belief.

OCTOBER 21, 1981

Date Surveyed <i>Karl D. King</i>
Registered Professional Engineer and/or Land Surveyor

NEW MEXICO No. 7250
Certificate No.





BOP STACK

RAM TYPE PREVENTERS
3000 PSI WORKING PRESSURE

ANNULAR TYPE PREVENTER
3000 PSI WORKING PRESSURE

BOP ARRANGEMENT