

NEW MEXICO OIL CONSERVATION COMMISSION  
Santa Fe, New Mexico

Form G-101  
Revised (12/1/55)  
30-015-01646

NOTICE OF INTENTION TO DRILL DEC 1 1959

Notice must be given to the District Office of the Oil Conservation Commission and approval obtained before drilling or recompletion begins. If changes in the proposed plan are considered advisable, a copy of this notice showing such changes will be returned to the sender. Submit this notice in QUINTUPLICATE. One copy will be returned following approval. See additional instructions in Rules and Regulations of the Commission. If State Land submit 6 Copies Attach Form G-128 in triplicate to first 3 copies of form G-101

Hobbs, New Mexico

November 25, 1959

(Place)

(Date)

OIL CONSERVATION COMMISSION  
SANTA FE, NEW MEXICO

Gentlemen:

You are hereby notified that it is our intention to commence the Drilling of a well to be known as  
**Pan American Petroleum Corporation**

(Company or Operator)

State of New Mexico "BD"

(Lease)

Well No. 1, in N The well is

located 660 feet from the South line and 2082.1 feet from the West

line of Section 31, T 17-S, R 28-E, NMPM.

(GIVE LOCATION FROM SECTION LINE) Empire Abo Pool, Eddy County

If State Land the Oil and Gas Lease is No. B-7966

If patented land the owner is

Address

We propose to drill well with drilling equipment as follows: Q-TD with rotary tools

The status of plugging bond is Blanket Bond on file with commission

Drilling Contractor Lee Drilling Company  
Philtower Building  
Tulsa, Oklahoma

We intend to complete this well in the Abo formation at an approximate depth of 6100 feet.

CASING PROGRAM

We propose to use the following strings of Casing and to cement them as indicated:

Size of Hole	Size of Casing	Weight per Foot	New or Second Hand	Depth	Sacks Cement
11"	8 5/8"	24#	New	1500	circ.
7 7/8"	5 1/2"	14# - 15.5#	New	6100	8500

If changes in the above plans become advisable we will notify you immediately.

ADDITIONAL INFORMATION (If recompletion give full details of proposed plan of work.)

DEC 4 1959

Approved \_\_\_\_\_, 19\_\_\_\_  
Except as follows:

Sincerely yours,

**Pan American Petroleum Corporation**

Original Signed (Company or Operator)

By J. W. BROWN

Position Area Superintendent

Send Communications regarding well to

Name J. W. Brown

Address Box 68 Hobbs, New Mexico

OIL CONSERVATION COMMISSION

By W. A. Gussitt  
OIL AND GAS INSPECTOR

OIL CONSERVATION COMMISSION  
ARTESIA DISTRICT OFFICE

No. Copies Received

6

DISTRIBUTION

	NO Copies ID	
MANAGER	1	
ASSISTANT	1	
MANAGEMENT OFFICE		
STATE LAND OFFICE	1	
J. S. G. C.	2	
HEADQUARTERS		
FILE		
DEPARTMENT OF MINES	1	✓

RECEIVED

NEW MEXICO OIL CONSERVATION COMMISSION  
WELL LOCATION AND ACREAGE DEDICATION PLAT

DEC 1

FORM C-128  
Revised 5/1/57  
1959

SEE INSTRUCTIONS FOR COMPLETING THIS FORM ON THE REVERSE SIDE

SECTION A

ARTESIA, OFFICE

Operator Pan American Pet. Corp. Lease of N.M. State "B.D." Well No. #1

Unit Letter N Section 31 Township 17 South Range 28 East County Eddy County

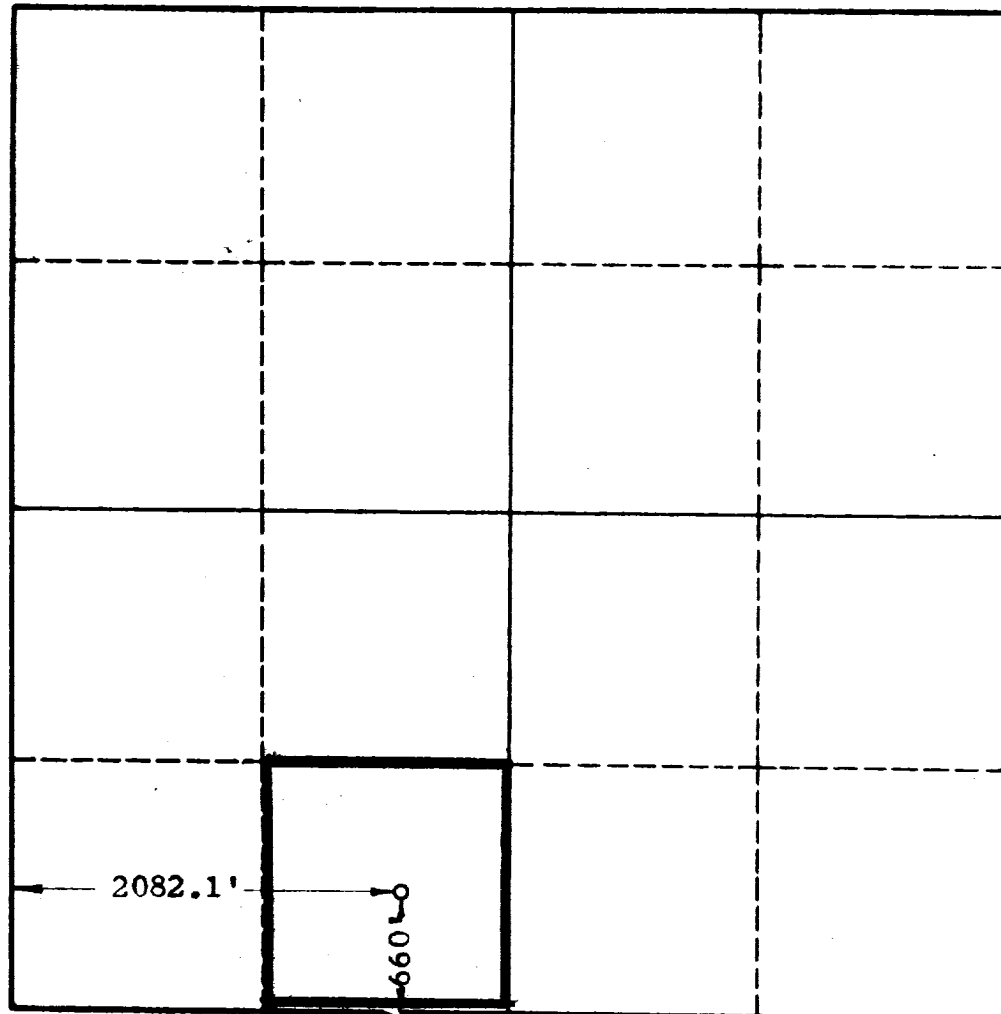
Actual Footage Location of Well: 660' feet from the South line and 2082.1' feet from the West line

Ground Level Elev. Producing Formation Pool Explor. the Underlay Dedicated Acreage: Acres

- 1. Is the Operator the only owner in the dedicated acreage outlined on the plat below? YES NO. ("Owner" means the person who has the right to drill into and to produce from any pool and to appropriate the production either for himself or for himself and another. (65-3-29 (e) NMSA 1935 Comp.)
- 2. If the answer to question one is "no," have the interests of all the owners been consolidated by communitization agreement or otherwise? YES NO. If answer is "yes," Type of Consolidation
- 3. If the answer to question two is "no," list all the owners and their respective interests below:

Owner	Land Description

SECTION B



CERTIFICATION

I hereby certify that the information in SECTION A above is true and complete to the best of my knowledge and belief.

Name Original Signed by I. W. BROWN  
Position Area Superintendent  
Company Pan American Petroleum Corp.  
Date November 25, 1959

I hereby certify that the well location shown on the plat in SECTION B was plotted from field notes of actual surveys made by me or under my supervision, and that the same is true and correct to the best of my knowledge and belief.

Date Surveyed 11-18-59  
Registered Professional Engineer and/or Land Surveyor: JOHN W. WEST  
Certificate No. N.M. - P.E. & L.S. NO. 676

## JOHN W. WEST ENGINEERING COMPANY

412 NORTH DAL PASO  
HOBBS, NEW MEXICO

DEC 1 1959

November 18, 1959  
ARTESIA, OFFICE

Pan American Pet. Corp.  
P. O. Box 68,  
Hobbs, New Mexico.

Gentlemen:

On November 17, 1959, a survey was made to locate your State "BD" No. 1 Well at a point 660 feet from the South line and 2082.1 feet from the West line of Section 31, Twp. 17 S., Rng. 28 E., N.M.P.M., Eddy County, New Mexico. Said well also described as being 660 feet from the South and West lines of the SE $\frac{1}{4}$  of the SW $\frac{1}{4}$  of said Section 31.

A flag was set up at the USGLO Quarter Section corner common to Section 31 and Section 6, Twp. 18 S. The transit was set up at the USGLO Section corner marker common to Section 31, Twp. 17 S., Rng. 28 E.; Section 36, Twp. 17S.; Rng. 27 E.; Section 1, Twp 18 S., Rng. 27 E.; and Section 6, Twp. 18 S., Rng. 28 E. Thence chaining from the transit N 88° 55' E along the South line of Section 31 a distance of 2082.1 feet; thence N 0° 18' W a distance of 660 feet to the location site of the State "BD" Well No. 1. As a check on our survey we chained S 0° 18' E a distance of 660 feet and N 88° 55' E a distance of 642.88 feet to the USGLO Quarter Section corner marker common to Section 31 and Section 6, Twp. 18 S. checking in within 0.50 feet of the distance shown on the USGLO Township Plats.

I hereby certify that the foregoing survey was made in the field under my supervision and that the same is true and correct to the best of my knowledge and belief.

Respectfully submitted,

  
John W. West