

UNITED STATES  
DEPARTMENT OF THE INTERIOR  
GEOLOGICAL SURVEY

30-015-22031

APPLICATION FOR PERMIT TO DRILL, DEEPEN, OR PLUG BACK

1a. TYPE OF WORK  
 DRILL  DEEPEN  PLUG BACK

b. TYPE OF WELL  
 OIL WELL  GAS WELL  OTHER   
 SINGLE ZONE  MULTIPLE ZONE

2. NAME OF OPERATOR  
 Hanson Oil Corporation

3. ADDRESS OF OPERATOR  
 P. O. Box 1515, Roswell, New Mexico 88201

4. LOCATION OF WELL (Report location clearly and in accordance with any State requirements.)\*  
 At surface  
 330' From South Line & 1650' From East Line  
 At proposed prod. zone

RECEIVED

14. DISTANCE IN MILES AND DIRECTION FROM NEAREST TOWN OR POST OFFICE\*  
 5 Miles North of Loco Hills, New Mexico

JAN 26 1977

15. DISTANCE FROM PROPOSED LOCATION TO NEAREST PROPERTY OR LEASE LINE, FT. (Also to nearest drlg. unit line, if any)  
 330'

16. NO. OF ACRES IN LEASE  
 80 O. G. O.

17. NO. OF ACRES ASSIGNED TO THIS WELL  
 40

18. DISTANCE FROM PROPOSED LOCATION TO NEAREST WELL, DRILLING, COMPLETED, OR APPLIED FOR, ON THIS LEASE, FT.  
 1100'

19. PROPOSED METHOD OF DRILLING: ROTARY OR CABLE TOOLS  
 Rotary

21. ELEVATIONS (Show whether DF, ET, GR, etc.)  
 3751.6 G.L.

22. APPROX. DATE WORK WILL START\*  
 February 1, 1977

23. PROPOSED CASING AND CEMENTING PROGRAM

| SIZE OF HOLE | SIZE OF CASING | WEIGHT PER FOOT | SETTING DEPTH | QUANTITY OF CEMENT |
|--------------|----------------|-----------------|---------------|--------------------|
| 12 1/4"      | 8 5/8"         | 24#             | 500'          | 225 sx.            |
| 7 7/8"       | 4 1/2"         | 11.6#           | 3300'         | 375 sx.            |

It is proposed to drill the above captioned well to a depth of 3300' or to a sufficient depth to test the San Andres Formation. If oil or gas is found in commercial quantities the above casing program will be followed. The well will then be logged, perforated and stimulated as conditions require. B.O.P. will be used during drilling and completion operations.

RECEIVED

JAN 04 1977

U.S. GEOLOGICAL SURVEY  
ARTESIA, NEW MEXICO

IN ABOVE SPACE DESCRIBE PROPOSED PROGRAM: If proposal is to deepen or plug back, give data on present productive zone and proposed new productive zone. If proposal is to drill or deepen directionally, give pertinent data on subsurface locations and measured and true vertical depths. Give blowout preventer program, if any.

24. SIGNED Ray Willis TITLE Vice President-Production DATE 12/15/76

(This space for Federal or State office use)

PERMIT NO. \_\_\_\_\_

APPROVED BY  
 CONDITIONS OF APPROVAL, IF ANY:

THIS APPROVAL IS VALID FOR OPERATIONS  
 ARE NOT COMMENCED WITHIN 3 MONTHS.  
 EXPIRES 1977

JAN 8 1977  
 ACTING DISTRICT ENGINEER

\*See Instructions On Reverse Side

NEW MEXICO OIL CONSERVATION COMMISSION  
WELL LOCATION AND ACREAGE DEDICATION PLAT

Form C-102  
Supersedes C-128  
Effective 1-1-65

All distances must be from the outer boundaries of the Section

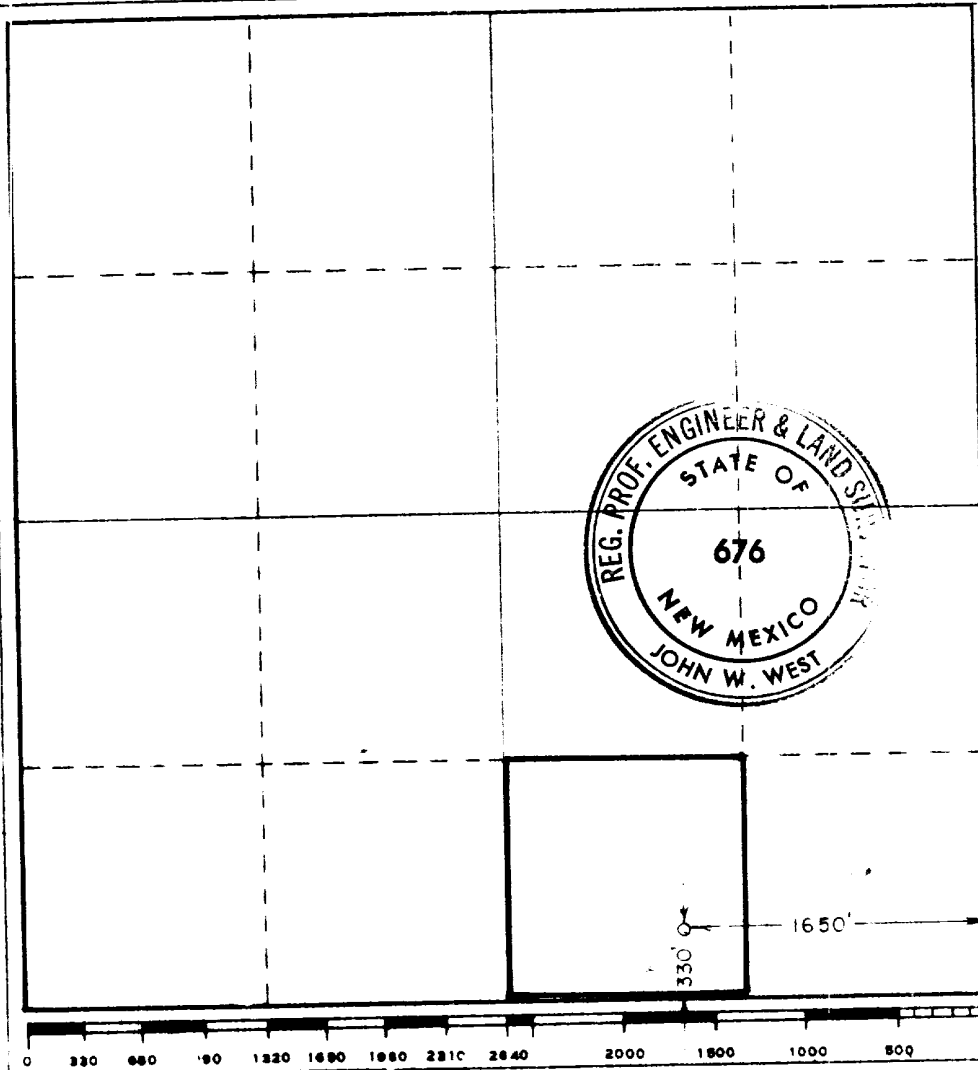
|   |   |                             |                                     |                                       |                      |
|---|---|-----------------------------|-------------------------------------|---------------------------------------|----------------------|
| Operator<br><b>HANSON OIL CORPORATION</b>   |   |                             | Lease<br><b>Square Lake-Federal</b> |                                       | Well No.<br><b>2</b> |
| Tract Letter<br><b>0</b>  | Section<br><b>28</b>                                | Township<br><b>16 South</b> | Range<br><b>30 East</b>             | County<br><b>Eddy</b>                 |                      |
| Actual Footage Location of Well:<br><b>330</b> feet from the <b>south</b> line and <b>1650</b> feet from the <b>east</b> line |   |                             |                                     |                                       |                      |
| Ground Level Elev.<br><b>3751.6</b>   | Producing Formation<br><del>Green</del> <b>G-5A</b> |                             | Pool<br><b>Square Lake</b>          | Dedicated Acreage:<br><b>40</b> Acres |                      |

1. Outline the acreage dedicated to the subject well by colored pencil or hachure marks on the plat below.
2. If more than one lease is dedicated to the well, outline each and identify the ownership thereof (both as to working interest and royalty).
3. If more than one lease of different ownership is dedicated to the well, have the interests of all owners been consolidated by communitization, unitization, force-pooling, etc?

Yes  No If answer is "yes," type of consolidation \_\_\_\_\_

If answer is "no," list the owners and tract descriptions which have actually been consolidated (Use reverse side of this form if necessary.) \_\_\_\_\_

No allowable will be assigned to the well until all interests have been consolidated (by communitization, unitization, forced-pooling, or otherwise) or until a non-standard unit, eliminating such interests, has been approved by the Commission.



**CERTIFICATION**

I hereby certify that the information contained herein is true and complete to the best of my knowledge and belief.

Name: *Ray W. West*

Position: **Vice President-Production**

Company: **Hanson Oil Corporation**

Date: \_\_\_\_\_

I hereby certify that the well location shown on this plat was plotted from field notes of actual surveys made by me or under my supervision, and that the same is true and correct to the best of my knowledge and belief.

Date Surveyed: **Dec. 21, 1976**

Registered Professional Engineer and/or Land Surveyor

*John W. West*

Certificate No. **676**