

NEW MEXICO OIL CONSERVATION COMMISSION
Santa Fe, New Mexico

RECEIVED
Page 6-101
Revised (12/1/55)
FEB 20 1961

NOTICE OF INTENTION TO DRILL

Notice must be given to the District Office of the Oil Conservation Commission and approval obtained before drilling or recompletion begins. If changes in the proposed plan are considered advisable, a copy of this notice showing such changes will be returned to the sender. Submit this notice in QUINTUPPLICATE. One copy will be returned following approval. See additional instructions in Rules and Regulations of the Commission. If State Land submit 6 Copies Attach Form C- 128 in triplicate to first 3 copies of form C-101

Midland, Texas
(Place)

2-17-61
(Date)

OIL CONSERVATION COMMISSION
SANTA FE, NEW MEXICO

Gentlemen:

You are hereby notified that it is our intention to commence the Drilling of a well to be known as
Humble Oil & Refining Co. 230356

(Company or Operator)

New Mexico State BK
(Lease)

Well No. 1, in K The well is
(Unit)

located 2314.3 feet from the South line and 1256 feet from the
West line of Section 30, T. 17-S, R. 29-E, NMPM.

(GIVE LOCATION FROM SECTION LINE) Empire Abo Undeig Pool, Eddy County

If State Land the Oil and Gas Lease is No. OG-181

If patented land the owner is

Address

We propose to drill well with drilling equipment as follows: rotary

The status of plugging bond is on file

Drilling Contractor unknown

We intend to complete this well in the Abo
formation at an approximate depth of 6500 feet.

CASING PROGRAM

We propose to use the following strings of Casing and to cement them as indicated:

Size of Hole	Size of Casing	Weight per Foot	New or Second Hand	Depth	Cement Cement
11"	8-5/8	24	New	800	300*
7-7/8	4-1/2	9.5	New	6500	300**

If changes in the above plans become advisable we will notify you immediately.

ADDITIONAL INFORMATION (If recompletion give full details of proposed plan of work.)

*Circulate to surface.

**Circulate to at least 600' above top of uppermost pay zone.

Minimum mud for samples.

Halliburton method of cementing.

FEB 20 1961

Approved _____, 19_____
Except as follows:

OIL CONSERVATION COMMISSION

By W. A. Gussert

Sincerely yours,

HUMBLE OIL & REFINING COMPANY
(Company or Operator)

By

Position Sr. Adm. Supervisor

Send Communications regarding well to

Name R. R. McCarty

Address Box 1600, Midland, Texas

HUMBLE LEASE NO. 230356 NEW MEXICO OIL CONSERVATION COMMISSION
STATE LEASE NO. OG-181
FEDERAL LEASE NO. Well Location and Acreage Dedication Plat

RECEIVED
Form 20-128
FEB 20 1961
Used 5/1/57
ARTESIA, OFFICE

Section A.

Date 2-15-61

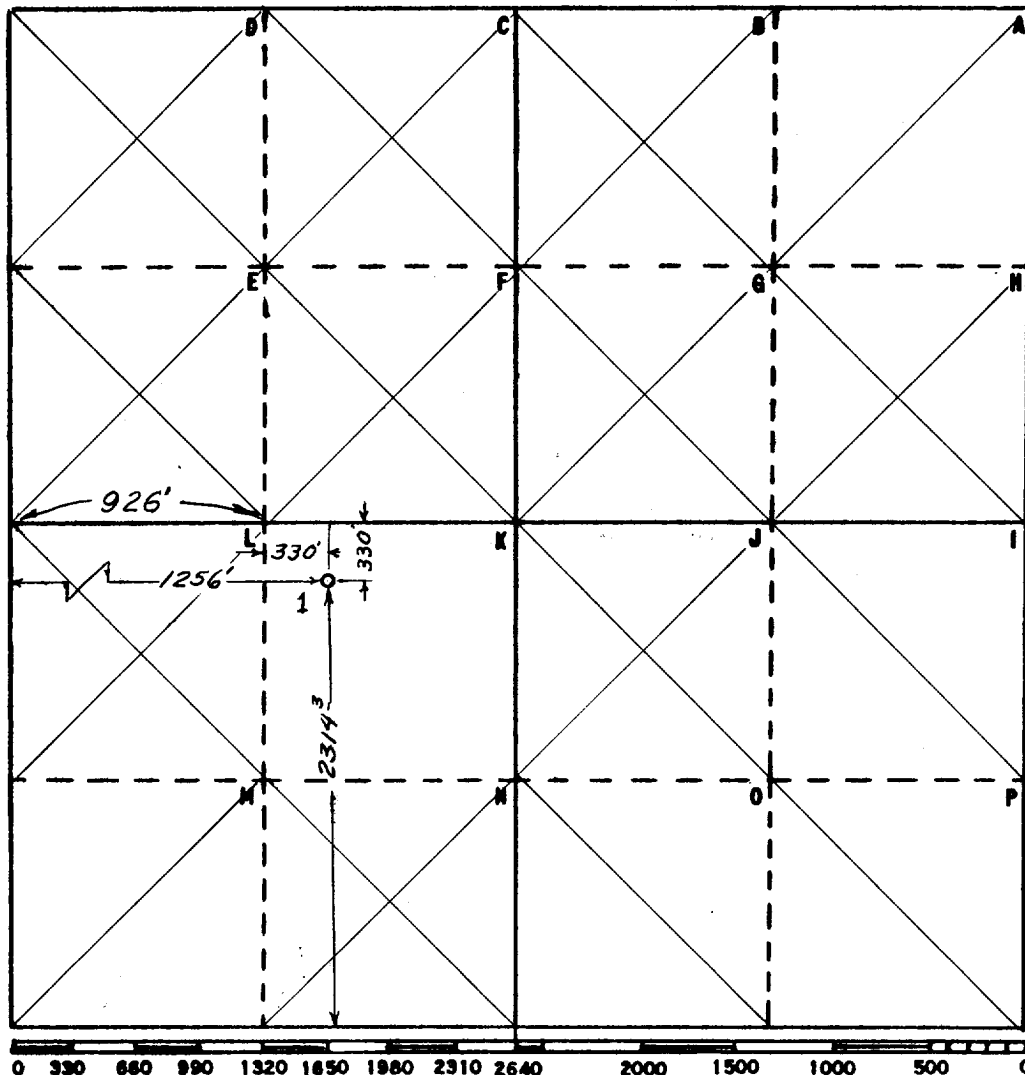
Operator Humble Oil & Refining Co. Lease New Mexico State "BK"
Well No. 1 Unit Letter "K" Section 30 Township - 17-S Range - 29-E NMPN
Located 1256 Feet From West Line, 23143 Feet From South Line
County Eddy G. L. Elevation 3660' OF Dedicated Acreage 40 Acres
Name of Producing Formation Abo Pool Empire-Abo Undeveloped

1. Is the Operator the only owner* in the dedicated acreage outlined on the plat below?
Yes L No
2. If the answer to question one is "no", have the interests of all the owners been consolidated by communitization agreement or otherwise? Yes No If answer is "yes," Type of Consolidation
3. If the answer to question two is "no," list all the owners and thier respective interests below:

Owner

Land Description

Section B



This is to certify that the information in Section A above is true and complete to the best of my knowledge and belief

HUMBLE OIL & REFG. CO.

(Operator)

Henry B. Head
(Representative)

Box 1600 Midland, Texas
Address

This is to certify that the well location shown on the plat in Section B was plotted from field notes of actual surveys made by me or under my supervision and that the same is true and correct to the best of my knowledge and belief.

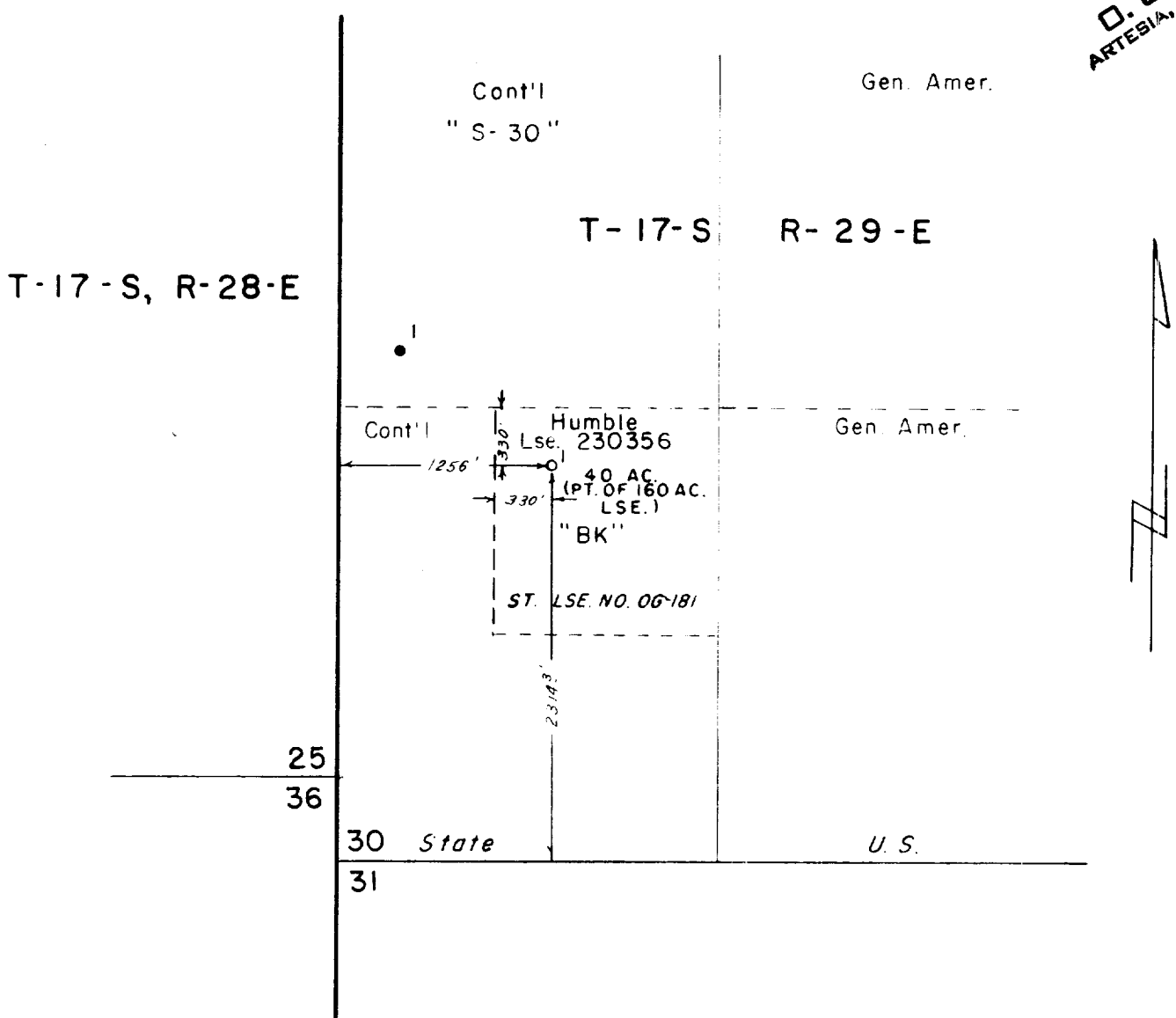
Date Surveyed 2-14-61

N. S. Hesterfield
Registered Professional
Engineer and/or Land Surveyor

Certificate No. 1382

FILE NO. W-A-3032

RECEIVED
FEB 20 1961
D. C. C.
ARTESIA, OFFICE



LEASE DESIGNATION PLAT

NEW MEXICO STATE "BK" LSE. 230356 NE 40 ACRES OF SW/4, SEC. 30, T-17-S , R-29-E EDDY CO., NEW MEXICO	
HUMBLE OIL & REFINING COMPANY PRODUCTION DEPARTMENT MIDLAND, TEXAS	
CIVIL ENG. DIV.	SCALE 1" = 1000'
PRIMARY DESIGN BY	DATE 2-15-61
DRAWN BY W. M. BRICE	CIVIL ENG. DIV. FILE NO. W-A 3032
CHECKED BY <i>D.L. Maltb.</i>	
APPROVED BY	
REVISED	

**OIL CONSERVATION COMMISSION
ARTESIA DISTRICT OFFICE**

No. Copies Received 6

DISTRIBUTION

	NO. FURNISHED	
OPERATOR	1	
SANTA FE	1	
PRORATION OFFICE	1	
STATE LAND OFFICE	1	
U. S. G. S.	2	
TRANSPORTER		
FILE	1	✓
BUREAU OF MINES		