

NEW MEXICO OIL CONSERVATION COMMISSION
Santa Fe, New Mexico

RECEIVED
Form G-101
Revised (12/1/55)

NOTICE OF INTENTION TO DRILL

Notice must be given to the District Office of the Oil Conservation Commission and approval obtained before drilling or recompletion begins. If changes in the proposed plan are considered advisable, a copy of this notice showing such changes will be returned to the sender. Submit this notice in QUINTUPPLICATE. One copy will be returned following approval. See additional instructions in Rules and Regulations of the Commission. If State Land submit 6 Copies Attach Form G-128 in triplicate to first 3 copies of form G-101

Artesia, New Mexico
(Place)

6-23-61
(Date)

OIL CONSERVATION COMMISSION
SANTA FE, NEW MEXICO

Gentlemen:

You are hereby notified that it is our intention to commence the Drilling of a well to be known as

Continental Oil Company
(Company or Operator)

State S-30, Well No. 2, in F. The well is located 2310 feet from the North line and 1254 feet from the West line of Section 30, T. 17S, R. 29E, NMPM. (GIVE LOCATION FROM SECTION LINE) Empire Abo Pool, Eddy County

D	C	B	A
E	F	G	H
I	K	J	I
M	N	O	P

If State Land the Oil and Gas Lease is No. E-4201

If patented land the owner is

Address

We propose to drill well with drilling equipment as follows: Rotary

The status of plugging bond is

Drilling Contractor Blue Pacific Drilling Company,
P.O. Box 832, Midland, Texas

We intend to complete this well in the Abo formation at an approximate depth of 6360 feet.

CASING PROGRAM

We propose to use the following strings of Casing and to cement them as indicated:

Size of Hole	Size of Casing	Weight per Foot	New or Second Hand	Depth	Sacks Cement
11	8 5/8	24#	New	725	300
7 7/8	5 1/2	14# & 15.5#	New	6,360	400

If changes in the above plans become advisable we will notify you immediately.

ADDITIONAL INFORMATION (If recompletion give full details of proposed plan of work.)

NMOCC-6 WAN SLO File

Approved JUN 23 1961, 19
Except as follows:

OIL CONSERVATION COMMISSION

By

Sincerely yours,

Continental Oil Company
(Company or Operator)

By

Position District Superintendent
Send Communications regarding well to

Name Continental Oil Company

Address Rowley Bldg., Artesia, N. M.

SANTA FE		
FILE		
U.S.G.S.		
LAND OFFICE		
TRANSPORTER	OIL	
	GAS	
PRODUCTION OFFICE		
OPERATOR		

NEW MEXICO OIL CONSERVATION COMMISSION

WELL LOCATION AND ACREAGE DEDICATION PLAT

SEE INSTRUCTIONS FOR COMPLETING THIS FORM ON THE REVERSE SIDE

FORM C-128
Revised 5/1/57

SECTION A

O.C.C.
ARTESIA, OFFICE

Operator Continental Oil Co		Lease State S-30		Well No. 2
Unit Letter F	Section 30	Township 17 South	Range 29 East	County Eddy
Actual Footage Location of Well: 2310 feet from the North line and 1254 feet from the West line				
Ground Level Elev. 3643	Producing Formation Abo	Pool Empire Abo	Dedicated Acreage: 40 Acres	

1. Is the Operator the only owner in the dedicated acreage outlined on the plat below? YES ☒ NO ☐ . ("Owner" means the person who has the right to drill into and to produce from any pool and to appropriate the production either for himself or for himself and another. (65-3-29 (e) NMSA 1935 Comp.)
2. If the answer to question one is "no," have the interests of all the owners been consolidated by communitization agreement or otherwise? YES ☐ NO ☐ . If answer is "yes," Type of Consolidation _____
3. If the answer to question two is "no," list all the owners and their respective interests below:

Owner	Land Description

SECTION B

CERTIFICATION

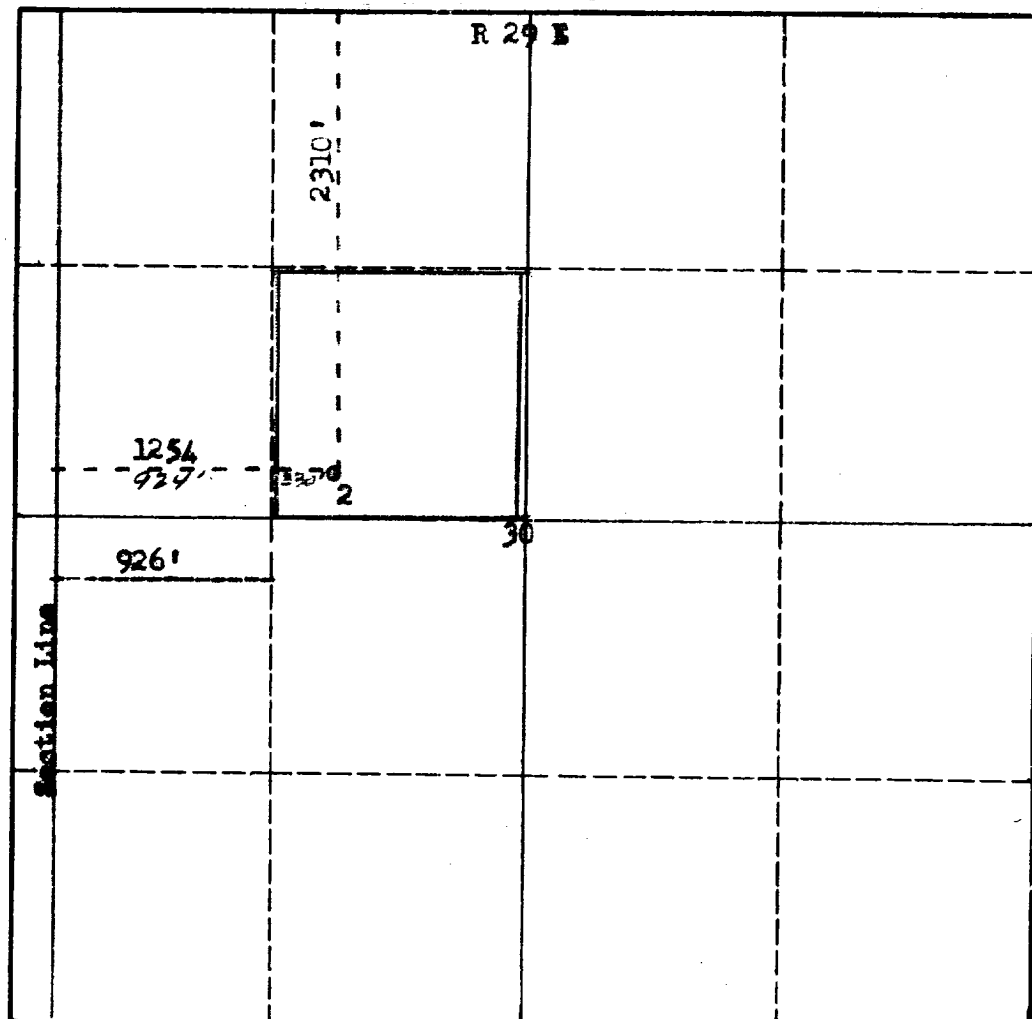
I hereby certify that the information in SECTION A above is true and complete to the best of my knowledge and belief.

Name <i>C.H. Heiser</i>
Position District Superintendent
Company Continental Oil Company
Date 6-22-61

I hereby certify that the well location shown on the plat in SECTION B was plotted from field notes of actual surveys made by me or under my supervision, and that the same is true and correct to the best of my knowledge and belief.

Date Surveyed June 22, 1961
Registered Professional Engineer and/or Land Surveyor <i>James M. Brown</i>

Certificate No.
N.M.L.S. No. 542



0 330 660 990 1320 1650 1980 2310 2640 2000 1500 1000 500

T
17
S

INSTRUCTIONS FOR COMPLETION OF FORM C-128

1. Operator shall furnish and certify to the information called for in Section A.
2. Operator shall outline the dedicated acreage for *both* oil and gas wells on the plat in Section B.
3. A registered professional engineer or land surveyor registered in the State of New Mexico or approved by the Commission shall show on the plat the location of the well and certify this information in the space provided.
4. All distances shown on the plat must be from the outer boundaries of the Section.
5. If additional space is needed for listing owners and their respective interests as required in question 3 of Section A, please use space below.

OIL CONSERVATION COMMISSION		
ARTESIA DISTRICT OFFICE		
No. Copies Received		6
DISTRIBUTION		
	COPIES FURNISHED	
OPERATOR	1	
SANTA FE	1	
PRORATION OFFICE	1	
STATE LAND OFFICE	2	
U. S. G. S.		
TRANSPORTER	1	
FILE		
BUREAU OF MINES		