

UNITED STATES  
DEPARTMENT OF THE INTERIOR  
GEOLOGICAL SURVEY

## APPLICATION FOR PERMIT TO DRILL, DEEPEN, OR PLUG BACK

## 1a. TYPE OF WORK

DRILL ☐DEEPEN ☒PLUG BACK ☐

## b. TYPE OF WELL

OIL  
WELL ☒GAS  
WELL ☐OTHER ☐SINGLE  
ZONE ☐MULTIPLE  
ZONE ☐

## 2. NAME OF OPERATOR

Martin Yates III ✓

## 3. ADDRESS OF OPERATOR

207 S. 4th, Artesia, New Mexico 88210 AUG 5 1982

## 4. LOCATION OF WELL (Report location clearly and in accordance with any State requirements.)\*

At surface

330' FSL and 990' FWL

O. C. D.

At proposed prod. zone

same

ARTESIA, OFFICE

## 14. DISTANCE IN MILES AND DIRECTION FROM NEAREST TOWN OR POST OFFICE\*

Approximately 23 miles east of Artesia, New Mexico.

## 15. DISTANCE FROM PROPOSED\*

LOCATION TO NEAREST  
PROPERTY OR LEASE LINE, FT.  
(Also to nearest drig. unit line, if any)

330'

## 16. NO. OF ACRES IN LEASE

40

17. NO. OF ACRES ASSIGNED  
TO THIS WELL

40

## 18. DISTANCE FROM PROPOSED LOCATION\*

TO NEAREST WELL, DRILLING, COMPLETED,  
OR APPLIED FOR, ON THIS LEASE, FT.

660'

## 19. PROPOSED DEPTH

3350'

## 20. ROTARY OR CABLE TOOLS

Rotary

## 21. ELEVATIONS (Show whether DF, RT, GR, etc.)

3538.0' GL

## 22. APPROX. DATE WORK WILL START\*

## 23. PROPOSED CASING AND CEMENTING PROGRAM

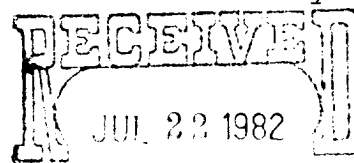
| SIZE OF HOLE | SIZE OF CASING | WEIGHT PER FOOT | SETTING DEPTH | QUANTITY OF CEMENT |
|--------------|----------------|-----------------|---------------|--------------------|
| existing csg | 8 5/8"         | 24#             | 470'          | 50 sx              |
| existing csg | 7"             | 20#             | 2475'         | 100 sx             |
| 6 1/4"       | 4 1/2"         | 9.5#            | 3350'         | 500 sx             |

Approximately 470' of surface casing has been set and cement circulated to shut off gravel and caving. 7" intermediate casing has been set to 2475'. 4 1/2" casing will be run to 3350'.

MUD PROGRAM: FW gel to 460', cut brine, gel and possible KCL to TD.

BOP PROGRAM: BOP's will be installed at the offset and tested daily.

COPY TO 3945



IN ABOVE SPACE DESCRIBE PROPOSED PROGRAM: If proposal is to deepen or plug back, give data on present production zone and proposed new productive zone. If proposal is to drill or deepen directionally, give pertinent data on subsurface locations and measured depths, etc. Give blowout preventer program, if any.

24.

SIGNED

TITLE Regulatory Coordinator DATE 7/21/82

(This space for Federal or State office use)

(Orig. Sgd.) GEORGE H. STEWART

PERMIT NO.

JUL 29 1982

APPROVAL DATE

APPROVED BY

DISTRICT SUPERVISOR

TITLE

DATE

NEW MEXICO OIL CONSERVATION COMMISSION  
WELL LOCATION AND ACREAGE DEDICATION PLAT

Form C-102  
Supersedes C-128  
Effective 1-1-65

All distances must be from the outer boundaries of the Section.

|                                     |                      |                                  |                         |                       |
|-------------------------------------|----------------------|----------------------------------|-------------------------|-----------------------|
| Operator<br><b>Martin Yates III</b> |                      | Lease<br><b>Robinson Federal</b> |                         | Well No.<br><b>1</b>  |
| Tract Letter<br><b>M</b>            | Section<br><b>35</b> | Township<br><b>17 South</b>      | Range<br><b>29 East</b> | County<br><b>Eddy</b> |

Actual Postage Location of Well:

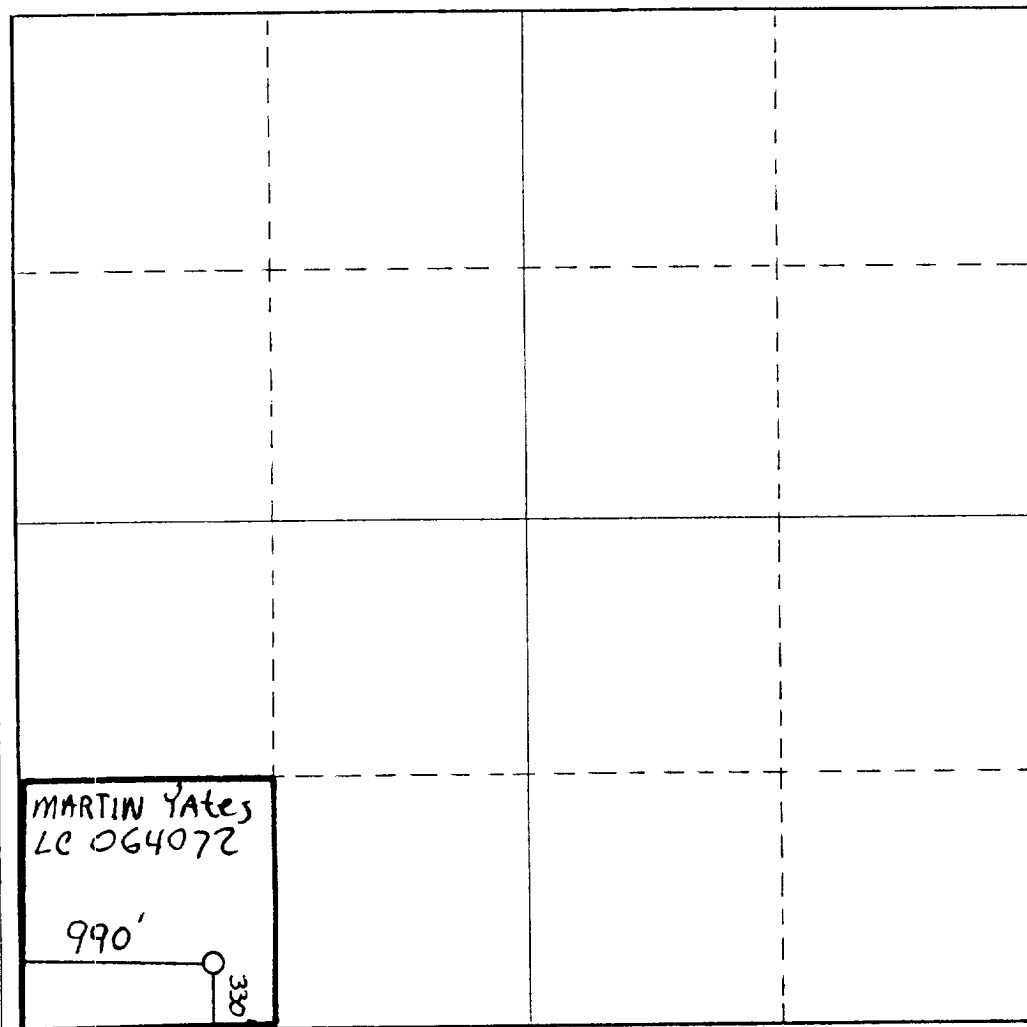
|                                     |  |          |                           |                                      |      |
|-------------------------------------|--|----------|---------------------------|--------------------------------------|------|
| <b>330</b>                          | feet from the <b>South</b>               | line and | <b>990</b>                | feet from the <b>West</b>            | line |
| Ground Level Elev.<br><b>3538.0</b> | Producing Formation<br><b>San Andres</b> |          | Pool<br><b>Loco Hills</b> | Dedicated Acreage<br><b>40</b> Acres |      |

1. Outline the acreage dedicated to the subject well by colored pencil or hachure marks on the plat below.
2. If more than one lease is dedicated to the well, outline each and identify the ownership thereof (both as to working interest and royalty).
3. If more than one lease of different ownership is dedicated to the well, have the interests of all owners been consolidated by communitization, unitization, force-pooling, etc?

☐ Yes ☒ No If answer is "yes," type of consolidation \_\_\_\_\_

If answer is "no," list the owners and tract descriptions which have actually been consolidated. (Use reverse side of this form if necessary.) \_\_\_\_\_

No allowable will be assigned to the well until all interests have been consolidated (by communitization, unitization, forced-pooling, or otherwise) or until a non-standard unit, eliminating such interests, has been approved by the Commission.



CERTIFICATION

I hereby certify that the information contained herein is true and complete to the best of my knowledge and belief.

*Cy Cowan*

Name  
**Cy Cowan**  
Position  
**Regulatory Coordinator**  
Company  
**Yates Petroleum Corp.**  
Date  
**7/21/82**

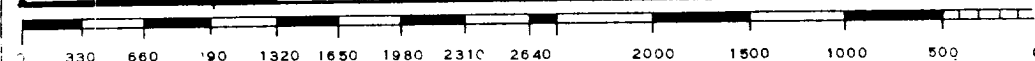
I hereby certify that the well location shown on this plat was plotted from field notes of actual surveys made by me or under my supervision, and that the same is true and correct to the best of my knowledge and belief.

This well was spudded  
**2/23/40** and is currently  
**producing.**

Date Surveyed \_\_\_\_\_

Registered Professional Engineer  
and/or Land Surveyor

Certificate No. \_\_\_\_\_



YATES PETROLEUM CORPORATION  
rtin Yates III  
Robinson Federal #1  
330' FSL and 990' FWL  
Eddy County, New Mexico

In conjunction with Form 9-331C, Application for Permit to Drill subject well, Yates Petroleum Corporation submits the following ten items of pertinent information in accordance with USGS requirements.

1. The geologic surface formation is sandy loam.
2. The estimated tops of geologic markers are as follows:

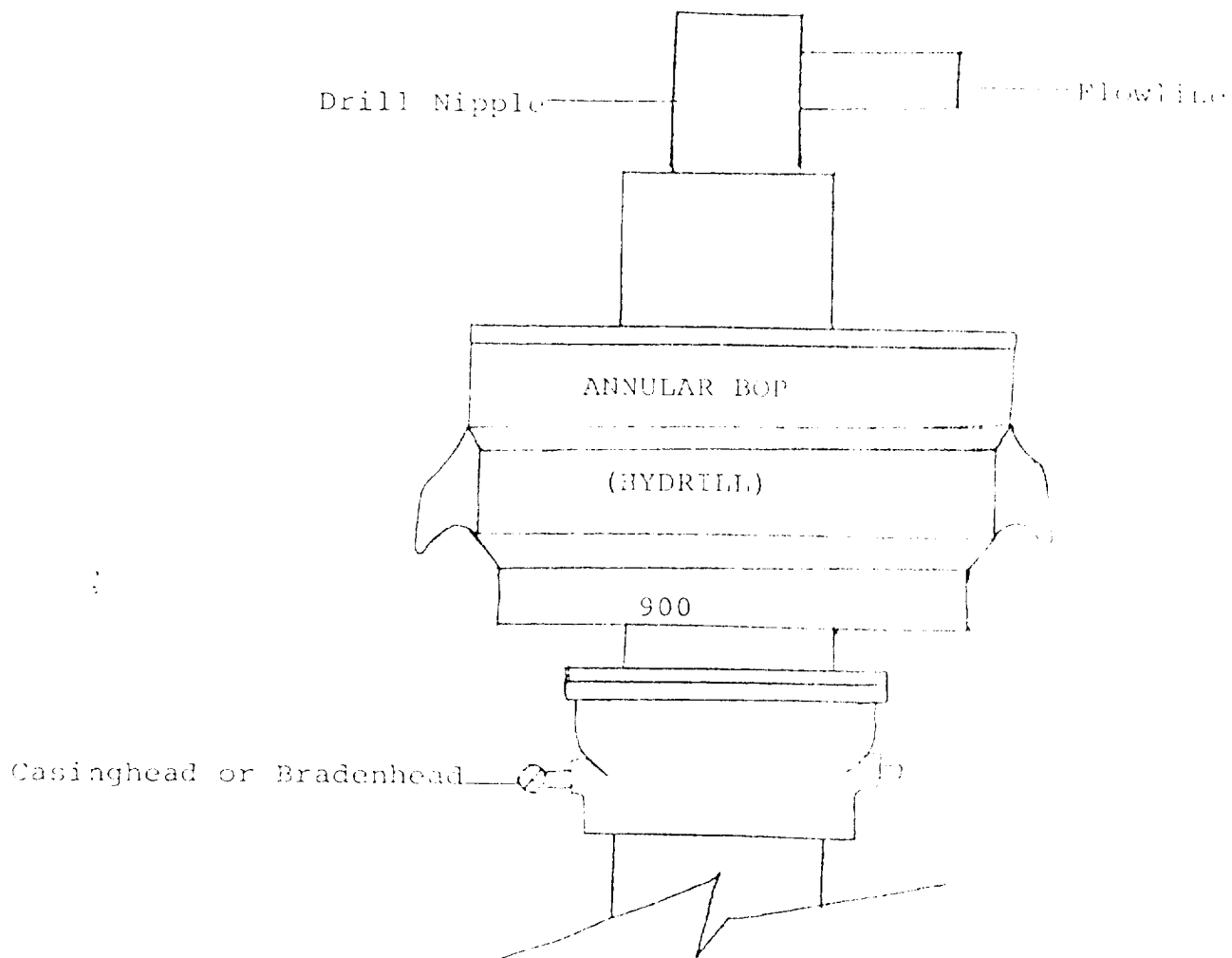
|                       |              |
|-----------------------|--------------|
| <u>Base of Salt</u>   | <u>880'</u>  |
| <u>Yates</u>          | <u>1070'</u> |
| <u>Queen</u>          | <u>2070'</u> |
| <u>Grayburg</u>       | <u>2475'</u> |
| <u>San Andres</u>     | <u>2925'</u> |
| <u>Lovington Sand</u> | <u>3075'</u> |
| <u>TD</u>             | <u>3350'</u> |

3. The estimated depths at which anticipated water, oil or gas formations are expected to be encountered:

Water: 150'

Oil or Gas: 2500' - 2945'

4. Proposed Casing Program: See Form 9-331C.
5. Pressure Control Equipment: See Form 9-331C and Exhibit B.
6. Mud Program: See Form 9-331C.
7. Auxiliary Equipment: Kelly Cock; pit level indicators and flow sensor equipment;  
sub with full-opening valve on floor, drill pipe connection.
8. Testing, Logging and Coring Program:  
Samples: 10' samples from surface  
DST's: not likely  
Coring: not likely  
Logging: CNL-FDC TD to csg, CNL-2 to surface, DLL TD to csg w/min RxO
9. No abnormal pressures or temperatures are anticipated.
10. Anticipated starting date: As soon as possible after approval.



THE FOLLOWING CONSTITUTE MINIMUM BLOWOUT PREVENTER REQUIREMENTS

1. All preventers to be hydraulically operated with secondary manual controls installed prior to drilling out from under casing.
2. All connections from operating manifolds to preventers to be all steel. Hole or tube a minimum of one inch in diameter.
3. The available closing pressure shall be at least 15% in excess of that required with sufficient volume to operate the BOP's.
4. All connections to and from preventer to have a pressure rating equivalent to that of the BOP's.
5. Hole must be kept filled on trips below intermediate casing.