

DISTRICT I
P.O. Box 1980, Hobbs, NM 88240

DISTRICT II
P.O. Drawer DD, Artesia, NM 88210

DISTRICT III
1000 Rio Brazos Rd., Aztec, NM 87410

OIL CONSERVATION DIVISION
P.O. Box 2088
Santa Fe, New Mexico 87504-2088

RECEIVED

APR 30 1993

SUNDRY NOTICES AND REPORTS ON WELLS.
(DO NOT USE THIS FORM FOR PROPOSALS TO DRILL OR TO DEEPEN OR PLUG BACK TO A
DIFFERENT RESERVOIR. USE "APPLICATION FOR PERMIT"
(FORM C-101) FOR SUCH PROPOSALS.)

1. Type of Well:
OIL WELL ☐ GAS WELL ☐ OTHER P&A WELL

2. Name of Operator
YATES PETROLEUM CORPORATION

3. Address of Operator
105 South 4th St., Artesia, NM 88210

4. Well Location
Unit Letter M : 330 Feet From The South Line and 990 Feet From The West Line
Section 36 Township 17S Range 29E NMPM Eddy County

10. Elevation (Show whether DF, RKB, RT, GR, etc.)

11. Check Appropriate Box to Indicate Nature of Notice, Report, or Other Data

NOTICE OF INTENTION TO:

PERFORM REMEDIAL WORK ☐ PLUG AND ABANDON ☒
TEMPORARILY ABANDON ☐ CHANGE PLANS ☐
PULL OR ALTER CASING ☐
OTHER: ☐

SUBSEQUENT REPORT OF:

REMEDIAL WORK ☐ ALTERING CASING ☐
COMMENCE DRILLING OPNS. ☐ PLUG AND ABANDONMENT ☐
CASING TEST AND CEMENT JOB ☐
OTHER: ☐

12. Describe Proposed or Completed Operations (Clearly state all pertinent details, and give pertinent dates, including estimated date of starting any proposed work) SEE RULE 1103.

PROPOSE TO PLUG AND ABANDON WELL. SEE ATTACHED PROCEDURE.

I hereby certify that the information above is true and complete to the best of my knowledge and belief.

SIGNATURE Juanita Goodlett TITLE Production Supervisor DATE 4-29-93
TYPE OR PRINT NAME Juanita Goodlett TELEPHONE NO. 505/748-1471

(This space for State Use)

APPROVED BY Racquel TITLE _____ DATE _____
CONDITIONS OF APPROVAL, IF ANY:

West Loco Hills Unit #24-2

Unit M, 330' FSL & 990' FWL

Sec 36-T17S-R29E NMPM

Loco Hills Field

Casing:

8 5/8" @178' 50sx
8 5/8" 178'-498'
7" 729'-2556'
4 1/2" @2592' 100sx
2 3/8" tubing w/injection packer @1645'
Perfs: OH f/ 2592' - 2695'

Formation Tops:

Top Salt 480'
Base Salt 990'
Top Queen 2165'
Base Queen 2195'
Top Gbrg Sand 2656'
Bot Gbrg Sand 2695'

Note: Mud (min 25# gel per 1bbl water) is to be placed between all plugs.

Propose to P&A Note: notify BLM & NMOCD prior to plugging

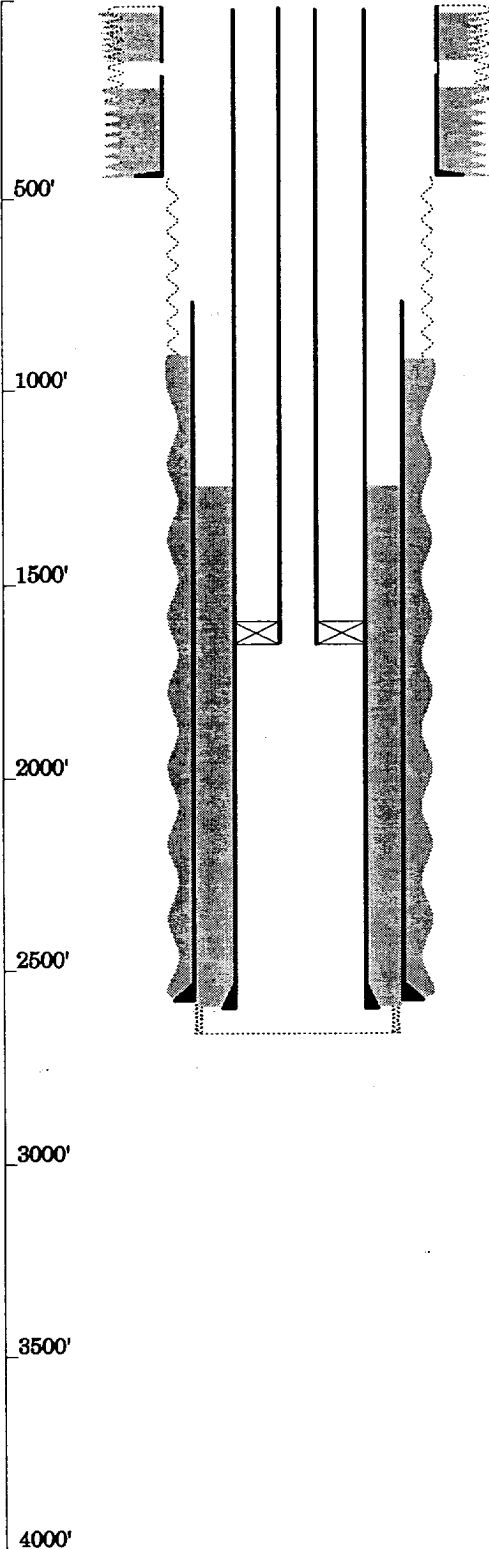
1. MIRUPU. POOH w/ tubing and packer.
2. RIH w/ bit and scraper on tubing and clean-out to 2592'. POOH.
3. Run cement bond log to determine TOC.
4. GIH w/ CIBP and set @ 2540'. Dump 35' of cement on top of plug.
5. If TOC is above 2115', spot a 25sx cement plug from 2300' to 2000'. Tag plug on next trip.
6. If TOC is not above the top of Queen (2165'), GIH w/ perf gun and perf 4 holes @ 2165'. POOH w/ perf gun. GIH w/ cmnt. retainer on 2 3/8" tubing and set CR @ 2115'. Squeeze Queen w/ 50 sx Class "C" w/ 2% CaCl₂. Dump 35' of cement on CR. POOH.
7. Pressure test casing to 500 psi.
8. If casing does not hold, RIH w/ RBP and packer and locate holes.
9. If holes are above the base of the salt (990') and TOC (from bond log) is not above the base of the salt, GIH w/ perf gun and perf 4 holes @ 990'. POOH w/ perf gun. GIH w/ cmnt. retainer on 2 3/8" tubing and set CR @ 940'. Squeeze Base of Salt w/ 50 sx Class "C" w/ 2% CaCl₂. Dump 35' of cement on CR. POOH.
10. Perf 4 holes @ 480'.
11. GIH w/ cmnt. retainer on 2 3/8" tubing and set CR @ 430'. Squeeze Shoe/Top of Salt w/ 50 sx Class "C" w/ 2% CaCl₂. Dump 35' of cement on CR. POOH. (If circulation is achieved, bring cement to surface in annulus and force outside 8 5/8" after cement is circulated.)
12. If cement has not been circulated in step 11 -- Perf 4 holes @ 60'. Attempt to establish circulation to surface through 7" x 8 5/8" annulus. Squeeze cement surface plug down 7" casing with returns through the 7" x 8 5/8" annulus. When cement is circulated, close annulus valve to force cement outside of 8 5/8" casing.
13. If cement was circulated outside casing in step 11 -- Set surface plug from 60' to surface.
14. Install abandonment marker.

West Loco Hills Unit #24/2

Unit M, 330' FSL 990' FWL
Sec. 36-T17S-R29E NMPM

Current Status

KB=8'
GL



8 5/8" from 0' to 178' w/ 50sx

8 5/8" from 178' to 490' (cement volume not reported)

toc is not recorded (max top is aprox 550')

Pkr set @ 1645'

2 3/8" tubing to 1645'

7 from 729' to 2556' (cement not reported)

4 1/2" @ 2592' w/100sx

TD 2695'

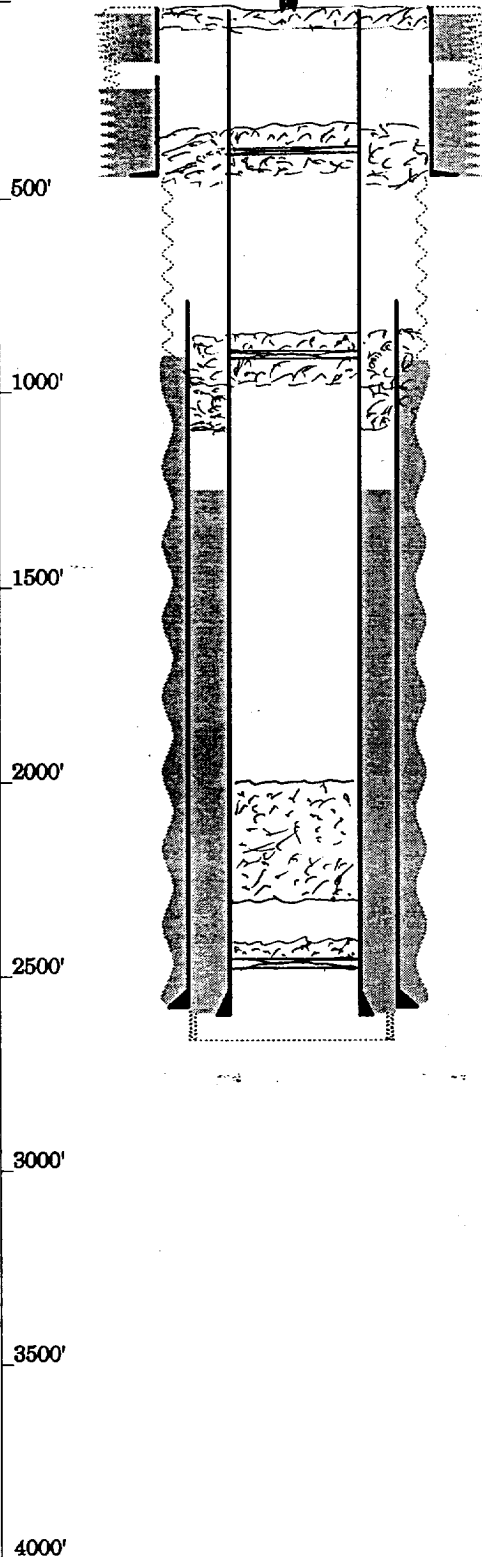
West Loco Hills Unit #24/2

Unit M, 330' FSL 990' FWL

Sec. 36-T17S-R29E NMPM

Current Status

KB=8'
GL



60' Surface Plug

8 5/8" from 0' to 178' w/ 50sx

CR @ 430' w/ 35' on top
8 5/8" from 178' to 490' (cement volume not reported)
Sg 2 Top of Salt w/ 50 Sx

CR @ 940' w/ 35' cement on top
Sg 2 Base Salt w/ 50 Sx

25 Sx plug f/ 2300' - 2000'

7 from 729' to 2556' (cement not reported)
CIBP @ 2540' w/ 35' on top
4 1/2" @ 2592' w/ 100sx
TD 2695'