

NEW MEXICO OIL CONSERVATION COMMISSION
Santa Fe, New Mexico

Form C-101
Revised (2/2/55)

NOTICE OF INTENTION TO DRILL

JAN 9 1961

Notice must be given to the District Office of the Oil Conservation Commission and approval obtained before drilling or recompletion begins. If changes in the proposed plan are considered advisable, a copy of this notice showing such changes will be returned to the sender. Submit this notice in QUINTUPPLICATE. One copy will be returned following approval. See additional instructions in Rules and Regulations of the Commission. If State Land submit 6 Copies Attach Form C- 128 in triplicate to first 3 copies of form C-101

Artesia, New Mexico

(Place)

January 6, 1961

(Date)

OIL CONSERVATION COMMISSION
SANTA FE, NEW MEXICO

Gentlemen:

You are hereby notified that it is our intention to commence the Drilling of a well to be known as

Newmont Oil Company

(Company or Operator)

Tallmadge

(Lease)

Well No. 4

in N

(Unit)

located 2310 feet from the West line and 330 feet from the

South

line of Section 32, T. 17S, R. 30E, NMPM.

(GIVE LOCATION FROM SECTION LINE)

Loco Hills

Pool,

Eddy

County

If State Land the Oil and Gas Lease is No.

B-1108

If patented land the owner is

Address

We propose to drill well with drilling equipment as follows: Cable Tools

The status of plugging bond is Blanket Bond

Drilling Contractor Not known at this time.

We intend to complete this well in the Grayburg

formation at an approximate depth of 2900 feet.

CASING PROGRAM

We propose to use the following strings of Casing and to cement them as indicated:

Size of Hole	Size of Casing	Weight per Foot	New or Second Hand	Depth	Sacks Cement
10"	8 5/8"	24	New	485	50
8 1/2"	4 1/2"	9.5	New	2835	100

If changes in the above plans become advisable we will notify you immediately.

ADDITIONAL INFORMATION (If recompletion give full details of proposed plan of work.)

Sincerely yours,

Newmont Oil Co.

(Company or Operator)

By

Position Supt.

Send Communications regarding well to

Name Newmont Oil Co.

Address Becker Bldg., Artesia, NM.

Approved
Except as follows:

JAN 9

1961

OIL CONSERVATION COMMISSION

By

NUMBER OF COPIES RECEIVED	
DISTRIBUTION	
SANTA FE	
FILE	
U.S.G.S.	
LAND OFFICE	
TRANSPORTER	OIL
	GAS
PRODUCTION OFFICE	
OPERATOR	

FORM C-128
1-1-57

NEW MEXICO OIL CONSERVATION COMMISSION

WELL LOCATION AND ACREAGE DEDICATION PLAT

JAN 9 1961

SEE INSTRUCTIONS FOR COMPLETING THIS FORM ON THE REVERSE

SECTION A

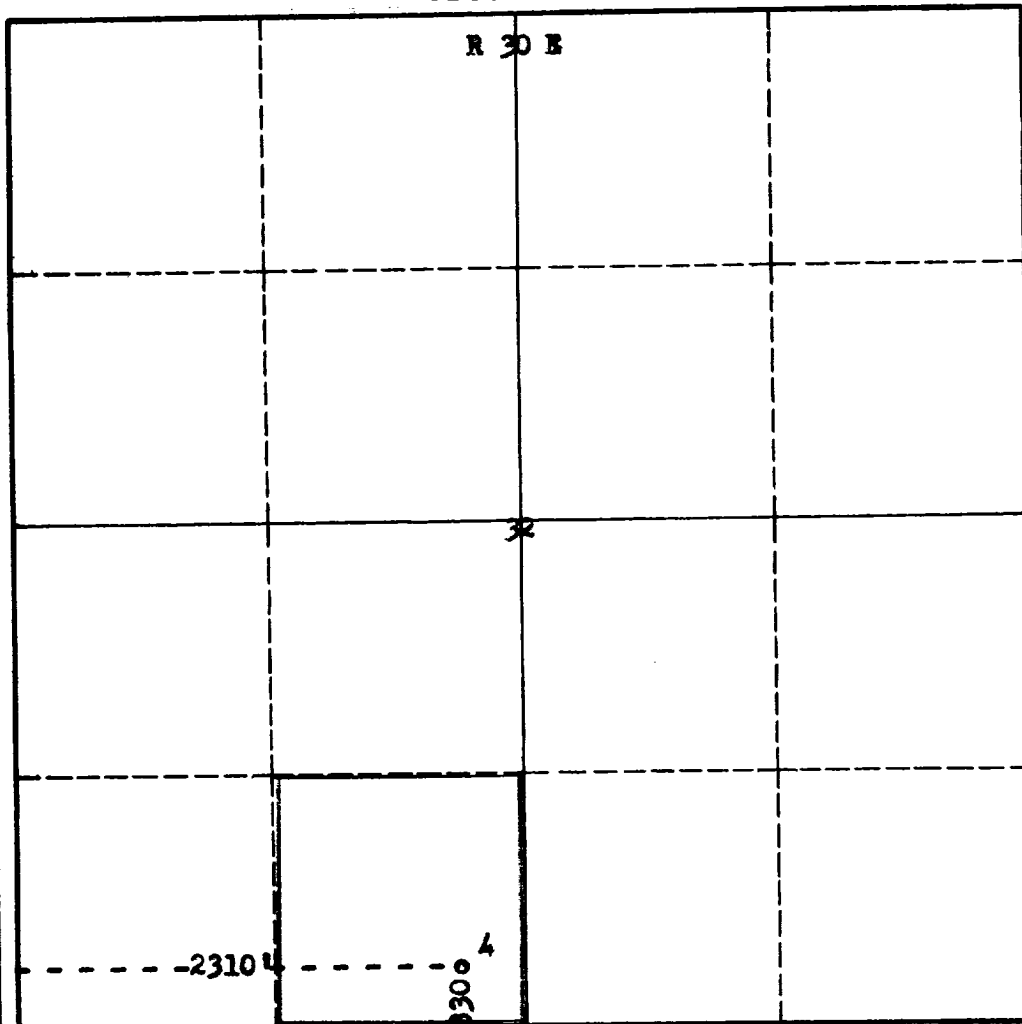
ARTESIA, OFFICE

Operator Newmont Oil Company		Lease State (Tallmadge)		Well No. 4
Unit Letter N	Section 32	Township 17 South	Range 30 East	County Eddy
Actual Footage Location of Well: 2310 feet from the West line and 330 feet from the South line				
Ground Level Elev. 3555	Producing Formation		Pool <i>Low Hill</i>	Dedicated Acreage: 40 Acres

1. Is the Operator the only owner in the dedicated acreage outlined on the plat below? YES ☒ NO ☐ . ("Owner" means the person who has the right to drill into and to produce from any pool and to appropriate the production either for himself or for himself and another. (65-3-29 (e) NMSA 1935 Comp.)
2. If the answer to question one is "no," have the interests of all the owners been consolidated by communitization agreement or otherwise? YES ☐ NO ☐ . If answer is "yes," Type of Consolidation _____
3. If the answer to question two is "no," list all the owners and their respective interests below:

Owner	Land Description

SECTION B



CERTIFICATION

I hereby certify that the information in SECTION A above is true and complete to the best of my knowledge and belief.

Name	<i>Harmon J. Ledbetter</i>
Position	<i>Supt.</i>
Company	<i>Newmont Oil Co.</i>
Date	<i>1-6-61</i>

I hereby certify that the well location shown on the plat in SECTION B was plotted from field notes of actual surveys made by me or under my supervision, and that the same is true and correct to the best of my knowledge and belief.

Date Surveyed	December, 27, 1960
Registered Professional Engineer and/or Land Surveyor	<i>James H. Brown</i>
Certificate No.	N.M.L.S. No. 512