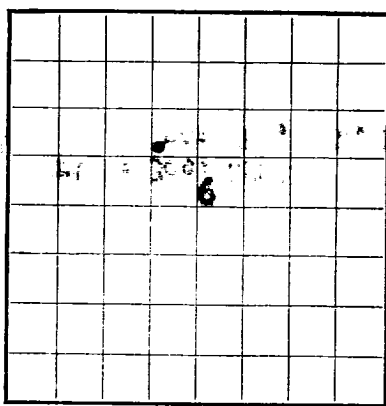


U. S. LAND OFFICE **Las Cruces**  
SERIAL NUMBER **111-229435-B**  
LEASE OR PERMIT TO PROSPECT



UNITED STATES  
DEPARTMENT OF THE INTERIOR  
GEOLOGICAL SURVEY

LOG OF OIL OR GAS WELL

LOCATE WELL CORRECTLY

Company **Simolator Oil & Gas Company** Address **520 East Broadway Hobbs, New Mexico**  
Lessor or Tract **J. L. Keel "B"** Field **Square Lake** State **New Mexico**  
Well No. **24** Sec. **6** T. **17S** R. **21E** Meridian **NMPN** County **Eddy**  
Location **1900** ft. [N] of [E] Line and **1900** ft. [E] of [W] Line of **Section 6** Elevation **3795**  
(Derrick floor relative to sea level)

The information given herewith is a complete and correct record of the well and all work done thereon so far as can be determined from all available records.

Signed \_\_\_\_\_

Date **March 18, 1957** Title **District Superintendent**

The summary on this page is for the condition of the well at above date.

Commenced drilling **12/21/56**, 19 **56** Finished drilling **2/26/57**, 19 **57**

OIL OR GAS SANDS OR ZONES

(Denote gas by G)  
No. 1, from **3122** to **3175** No. 4, from \_\_\_\_\_ to \_\_\_\_\_  
No. 2, from \_\_\_\_\_ to \_\_\_\_\_ No. 5, from \_\_\_\_\_ to \_\_\_\_\_  
No. 3, from \_\_\_\_\_ to \_\_\_\_\_ No. 6, from \_\_\_\_\_ to \_\_\_\_\_

IMPORTANT WATER SANDS

No. 1, from \_\_\_\_\_ to \_\_\_\_\_ No. 3, from \_\_\_\_\_ to \_\_\_\_\_  
No. 2, from \_\_\_\_\_ to \_\_\_\_\_ No. 4, from \_\_\_\_\_ to \_\_\_\_\_

CASING RECORD

Size casing	Weight per foot	Threads per inch	Make	Amount	Kind of shoe	Cut and pulled from	Perforated		Purpose
							From-	To-	
<b>10-3/4</b>	<b>28.5</b>	<b>8</b>	<b>Arco</b>	<b>500</b>			<b>3996</b>	<b>3163</b>	<b>Surface Production</b>

MUDDING AND CEMENTING RECORD

Size casing	Where set	Number sacks of cement	Method used	Mud gravity	Amount of mud used
<b>10-3/4</b>	<b>509</b>	<b>500</b>	<b>Halliburton</b>		
<b>7"</b>	<b>3,180</b>	<b>100</b>			

PLUGS AND ADAPTERS

Heaving plug—Material **Magnesium** Length **4"** Depth set **3175'**  
Adapters—Material \_\_\_\_\_ Size \_\_\_\_\_

SHOOTING RECORD

Size	Shell used	Explosive used	Quantity	Date	Depth shot	Depth cleaned out
	<b>None</b>					

TOOLS USED

Rotary tools were used from **Surface** feet to **3519'** feet, and from \_\_\_\_\_ feet to \_\_\_\_\_ feet  
Cable tools were used from \_\_\_\_\_ feet to \_\_\_\_\_ feet, and from \_\_\_\_\_ feet to \_\_\_\_\_ feet

DATES

Put to producing **March 16, 1957**

The production for the first 24 hours was **176** barrels of fluid of which **100%** was oil; **0%** emulsion; **0%** water; and **0%** sediment. Gravity, °Bé. **36.2**

If gas well, cu. ft. per 24 hours \_\_\_\_\_ Gallons gasoline per 1,000 cu. ft. of gas \_\_\_\_\_

Rock pressure, lbs. per sq. in. \_\_\_\_\_

EMPLOYEES

**C. E. McKay**, Driller **B. G. Hendricks**, Driller  
**Roy Hill**, Driller \_\_\_\_\_, Driller

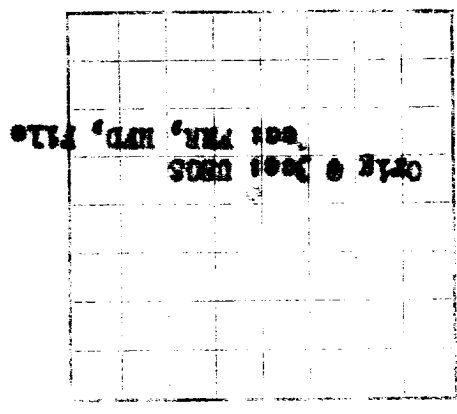
FORMATION RECORD

FROM-	TO-	TOTAL FEET	FORMATION
<b>DRILLER'S LOG (Samples)</b>			
0	113	113	Sand and Caliche
113	430	317	Red Beds
430	700	270	Salt and anhydrite
700	1030	330	Salt
1030	1435	405	Salt and anhydrite
1435	2193	758	Line and anhydrite
2193	2218	25	Anhydrite
2218	2860	642	Line and anhydrite
2860	3519	659	Line and shale
<b>GEOLOGICAL TOPS - (KL)</b>			
Anhydrite	1335		
Yates	1503		
7-Rivers	1802		
Queen	2399		
Grayburg	2822		
San Andres	3122		

FOLE

U.S. Land Office  
 District Office  
 Bureau or Permit to Prospect

UNITED STATES  
 DEPARTMENT OF THE INTERIOR  
 GEOLOGICAL SURVEY



LOG OF OIL OR GAS WELL

Well No. \_\_\_\_\_  
 Location \_\_\_\_\_  
 Township \_\_\_\_\_ Range \_\_\_\_\_ Section \_\_\_\_\_  
 State \_\_\_\_\_

The information given herein is a complete and correct record of the well and all work done thereon as far as can be determined from all available records.  
 Signed \_\_\_\_\_  
 Date \_\_\_\_\_

The summary on this page is for the condition of the well at above date.  
 Completed drilling \_\_\_\_\_  
 No. \_\_\_\_\_

Produced \_\_\_\_\_  
 No. \_\_\_\_\_  
 to \_\_\_\_\_  
 from \_\_\_\_\_  
 No. \_\_\_\_\_  
 to \_\_\_\_\_  
 from \_\_\_\_\_

Produced \_\_\_\_\_  
 No. \_\_\_\_\_  
 to \_\_\_\_\_  
 from \_\_\_\_\_  
 No. \_\_\_\_\_  
 to \_\_\_\_\_  
 from \_\_\_\_\_

Produced \_\_\_\_\_  
 No. \_\_\_\_\_  
 to \_\_\_\_\_  
 from \_\_\_\_\_  
 No. \_\_\_\_\_  
 to \_\_\_\_\_  
 from \_\_\_\_\_

Produced \_\_\_\_\_  
 No. \_\_\_\_\_  
 to \_\_\_\_\_  
 from \_\_\_\_\_  
 No. \_\_\_\_\_  
 to \_\_\_\_\_  
 from \_\_\_\_\_

It is of the greatest importance to have a complete history of the well. Please state in detail the dates of redrilling, together with the reasons for the work and its results. If there were any changes made in the casing, state fully, and if any casing was attached, state in the well, give size and location. If the well has been dynamited, give date, size, position, and number of shots. If plugs or bridges were put in to test for water, state kind of material used, position, and results of pumping or pulling.

HISTORY OF OIL OR GAS WELL

10-43094-2 U. S. GOVERNMENT PRINTING OFFICE

DATE	DEPTH	TEMPERATURE	PRESSURE	PRODUCTION	REMARKS
1953 MAR 17	100	100	100	100	100
	200	200	200	200	200
	300	300	300	300	300
	400	400	400	400	400
	500	500	500	500	500
	600	600	600	600	600
	700	700	700	700	700
	800	800	800	800	800
	900	900	900	900	900
	1000	1000	1000	1000	1000