

NO. OF COPIES RECEIVED	7
DISTRIBUTION	
SANTA FE	1
FILE	1
U.S.G.S.	2
LAND OFFICE	1
OPERATOR	2

RECEIVED
 NEW MEXICO OIL CONSERVATION COMMISSION
AUG 26 1968
O. C. C.
ARTESIA. OFFICE

30-015-20161

Form C-101
 Revised 1-1-65

5A. Indicate Type of Lease STATE <input checked="" type="checkbox"/> FEE <input type="checkbox"/>
5. State Oil & Gas Lease No. 50710
7. Unit Agreement Name
8. Farm or Lease Name Continental "U" State
9. Well No. 3
10. Field and Pool, or Wildcat Grayburg Jackson
12. County Eddy
19. Proposed Depth 2700
19A. Formation Matex
20. Rotary or C.T. Rotary
21. Elevations (Show whether DF, RT, etc.) 3620 (Estimated)
21A. Kind & Status Plug. Bond Approved
21B. Drilling Contractor Cactus Drilling Co.
22. Approx. Date Work will start August 28, 1968

APPLICATION FOR PERMIT TO DRILL, DEEPEN, OR PLUG BACK

1a. Type of Work b. Type of Well OIL WELL <input checked="" type="checkbox"/> GAS WELL <input type="checkbox"/> OTHER <input type="checkbox"/> DRILL <input checked="" type="checkbox"/> DEEPEN <input type="checkbox"/> PLUG BACK <input type="checkbox"/> SINGLE ZONE <input type="checkbox"/> MULTIPLE ZONE <input type="checkbox"/>	2. Name of Operator Sunray DX Oil Company	3. Address of Operator P. O. Box 1416 - Roswell, New Mexico 88201
4. Location of Well UNIT LETTER F LOCATED 1980 FEET FROM THE North LINE AND 1980 FEET FROM THE West LINE OF SEC. 15 TWP. 17-S RGE. 29-E NMPM		
23. PROPOSED CASING AND CEMENT PROGRAM		
SIZE OF HOLE 12-1/4 7-7/8	SIZE OF CASING 8-5/8 4-1/2	WEIGHT PER FOOT 24 9.5
SETTING DEPTH 500 2700	SACKS OF CEMENT Circulate 250	EST. TOP Surface

1. Move in rotary rig.
2. Drill 12-1/4" hole to 500'. Set 8-5/8", 24#, J-55 casing to 500' and circulate cement. WOC 18 hours and pressure test casing to 1000 psi.
3. Drill 7-7/8" hole to 2700'. Log well. Run 4-1/2", 9.5# casing to TD. Cement with 250 sacks. WOC 24 hours then pressure test casing to 1000 psi.
4. Perforate Matex Zone as determined from log.
5. Complete as required.

APPROVAL VALID
 FOR 90 DAYS UNLESS
 DRILLING COMMENCED,

EXPIRES 11-24-68

NOTE: This is a secondary development well in the SDX Matex Flood and will be completed as a producer. This well will later be converted to injection.

IN ABOVE SPACE DESCRIBE PROPOSED PROGRAM; IF PROPOSAL IS TO DEEPEN OR PLUG BACK, GIVE DATA ON PRESENT PRODUCTIVE ZONE AND PROPOSED NEW PRODUCTIVE ZONE. GIVE BLOWOUT PREVENTER PROGRAM, IF ANY.

I hereby certify that the information above is true and complete to the best of my knowledge and belief.

Signed J. D. Lebo F. D. Lebo Title District Engineer Date August 23, 1968

(This space for State Use)

APPROVED BY W. A. Gressett TITLE OIL AND GAS INSPECTOR DATE 11-26-1968

CONDITIONS OF APPROVAL, IF ANY:

NEW MEXICO OIL CONSERVATION COMMISSION
WELL LOCATION AND ACREAGE DEDICATION PLAT

Form C-102
Supersedes C-128
Effective 1-1-65

All distances must be from the outer boundaries of the Section.

Operator SUNRAY DX OIL COMPANY			Lease CONTINENTAL U STATE		Well No. 3
Unit Letter F	Section 15	Township 17 SOUTH	Range 29 EAST	County EDDY	
Actual Footage Location of Well: 1980 feet from the NORTH line and 1980 feet from the WEST line					
Ground Level Elev.	Producing Formation Metex	Pool Grayburg Jackson	Dedicated Acreage: 40 Acres		

1. Outline the acreage dedicated to the subject well by colored pencil or hachure marks on the plat below.
2. If more than one lease is dedicated to the well, outline each and identify the ownership thereof (both as to working interest and royalty).
3. If more than one lease of different ownership is dedicated to the well, have the interests of all owners been consolidated by communitization, unitization, force-pooling, etc?

RECEIVED

AUG 26 1968

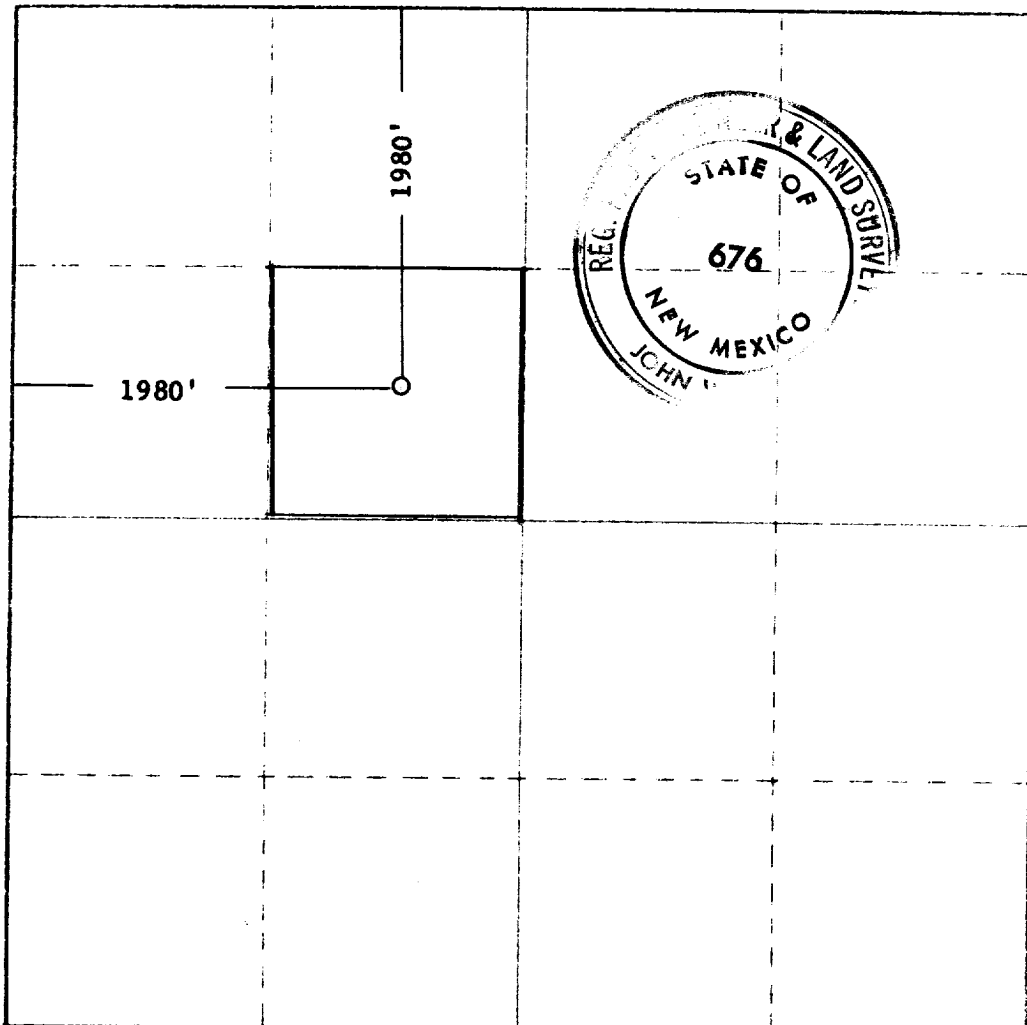
☐ Yes ☐ No If answer is "yes," type of consolidation _____

O. C. C.

ARTERIAL OFFICE

If answer is "no," list the owners and tract descriptions which have actually been consolidated on the reverse side of this form if necessary.) _____

No allowable will be assigned to the well until all interests have been consolidated (by communitization, unitization, forced-pooling, or otherwise) or until a non-standard unit, eliminating such interests, has been approved by the Commission.



CERTIFICATION

I hereby certify that the information contained herein is true and complete to the best of my knowledge and belief.

J. D. Lebo

F. D. Lebo

District Engineer

Sunray DX Oil Company

August 23, 1968

I hereby certify that the well location shown on this plat was plotted from field notes of actual surveys made by me or under my supervision, and that the same is true and correct to the best of my knowledge and belief.

Date Surveyed

Aug. 21, 1968

Registered Professional Engineer
and Land Surveyor

John W. Wheat

Certificate No.

676

