

UNITED STATES
DEPARTMENT OF THE INTERIOR
GEOLOGICAL SURVEY

(Other instructions on reverse side)

30-015-20708

Copy to St

APPLICATION FOR PERMIT TO DRILL, DEEPEN, OR PLUG BACK

1a. TYPE OF WORK

DRILL ☒DEEPEN ☐PLUG BACK ☐

b. TYPE OF WELL

OIL
WELL ☒GAS
WELL ☐OTHER ☐SINGLE
ZONE ☐MULTIPLE
ZONE ☐

2. NAME OF OPERATOR

Gulf Oil Corporation

3. ADDRESS OF OPERATOR

Box 670, Hobbs, New Mexico 88240

4. LOCATION OF WELL (Report location clearly and in accordance with any State requirements.)*

At surface

1980' FnL & 660' FWL, Section 17, 17-S, 30-E

At proposed prod. zone

14. DISTANCE IN MILES AND DIRECTION FROM NEAREST TOWN OR POST OFFICE*

10. DISTANCE FROM PROPOSED*

LOCATION TO NEAREST
PROPERTY OR LEASE LINE, FT.
(Also to nearest drlg. unit line, if any)

18. DISTANCE FROM PROPOSED LOCATION*

TO NEAREST WELL, DRILLING, COMPLETED,
OR APPLIED FOR, ON THIS LEASE, FT.

16. NO. OF ACRES IN LEASE

80

19. PROPOSED DEPTH

3700'

17. NO. OF ACRES ASSIGNED
TO THIS WELL

40

20. ROTARY OR CABLE TOOLS

Rotary

21. ELEVATIONS (Show whether DF, RT, GR, etc.)

22. APPROX. DATE WORK WILL START*

July 15, 1972

23.

PROPOSED CASING AND CEMENTING PROGRAM

SIZE OF HOLE	SIZE OF CASING	WEIGHT PER FOOT	SETTING DEPTH	QUANTITY OF CEMENT
11"	8-5/8"	24# K-55	450'	200 sacks Class C W/2% Ca C12
7-7/8"	4-1/2"	9.50# H-40	3700'	570 sacks Class C

Proposed Mud Program

0 - 450' Spud Mud
450 - 2700' Brine Water
2700' - TD Salt Water Gel

Blow out Preventer

See Attached Drawing

RECEIVED

JUL 17 1972

O. C. C.
ARTESIA, OFFICE

PROPOSED OPERATIONS WILL NOT
AFFECT ENVIRONMENT SIGNIFICANTLY

RECEIVED
JUL 11 1972
U. S. GEOLOGICAL SURVEY
ARTESIA, NEW MEXICO

IN ABOVE SPACE DESCRIBE PROPOSED PROGRAM: If proposal is to deepen or plug back, give data on present productive zone and proposed new productive zone. If proposal is to drill or deepen directionally, give pertinent data on subsurface locations and measured and true vertical depths. Give blowout preventer program, if any.

24.

SIGNED

TITLE

Area Production Manager

DATE

July 10, 1972

(This space for Federal or State office use)

PERMIT NO.

APPROVAL DATE

JUL 14 1972

APPROVED BY

TITLE

DISTRICT ENGINEER

DATE

JUL 14 1972

CONDITIONS OF APPROVAL, IF ANY:

THIS APPROVAL IS RESCINDED IF OPERATIONS
ARE NOT COMMENCED WITHIN 3 MONTHS.
EXPIRES 10-14-72

*See Instructions On Reverse Side

NEW MEXICO OIL CONSERVATION COMMISSION
WELL LOCATION AND ACREAGE DEDICATION PLAT

JUL 17 1972
Form C-102
Supersedes C-128
Effective 1-1-65

All distances must be from the outer boundaries of the Section.

O. C. C.

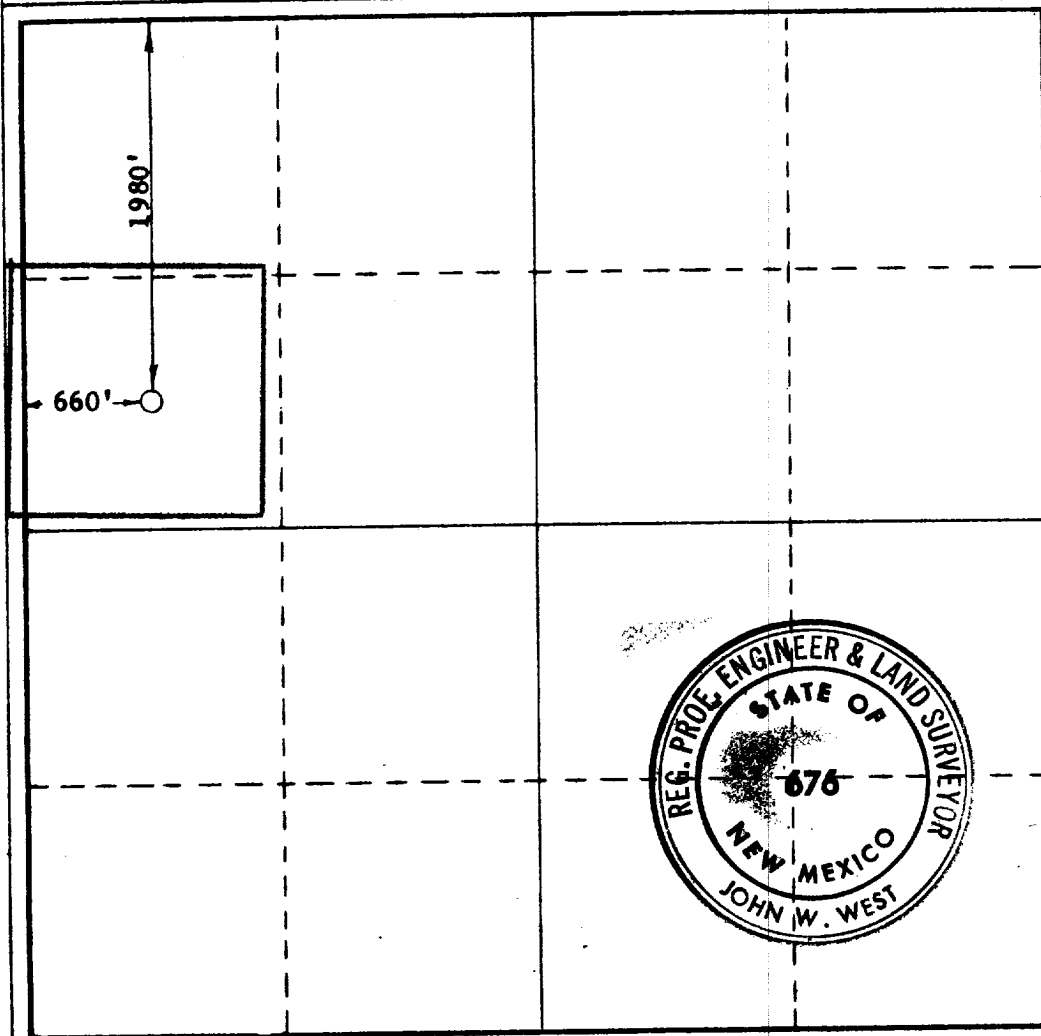
Operator GULF OIL CORPORATION		Lease HOLDER "CB" FEDERAL NON-PAY		ARTESIA OFFICE 1
Unit Letter E	Section 17	Township 17 SOUTH	Range 30 EAST	County EDDY
Actual Footage Location of Well: 1980 feet from the NORTH line and 660 feet from the WEST line				
Ground Level Elev.	Producing Formation Grayburg	Pool Grayburg Jackson	Dedicated Acreage: 40 Acres	

1. Outline the acreage dedicated to the subject well by colored pencil or hachure marks on the plat below.
2. If more than one lease is dedicated to the well, outline each and identify the ownership thereof (both as to working interest and royalty).
3. If more than one lease of different ownership is dedicated to the well, have the interests of all owners been consolidated by communitization, unitization, force-pooling, etc?

☐ Yes ☐ No If answer is "yes," type of consolidation _____

If answer is "no," list the owners and tract descriptions which have actually been consolidated. (Use reverse side of this form if necessary.) _____

No allowable will be assigned to the well until all interests have been consolidated (by communitization, unitization, forced-pooling, or otherwise) or until a non-standard unit, eliminating such interests, has been approved by the Commission.



CERTIFICATION

I hereby certify that the information contained herein is true and complete to the best of my knowledge and belief.

ORIGINAL SIGNED BY

Name **C. D. BORLAND**

C. D. BORLAND

Position

Area Production Manager

Company

Gulf Oil Corporation

Date

July 10, 1972

I hereby certify that the information shown on this plat is true and correct from field notes and surveys made by me or under my supervision, and for the same is true and correct to the best of my knowledge and belief.

RECEIVED
JUL 11 1972
U. S. GEOLOGICAL SURVEY
ARTESIA, NEW MEXICO

Date Surveyed

JULY 6, 1972

Registered Professional Engineer and/or Land Surveyor

John W. West

Certificate No.

676

0 330 660 990 1320 1650 1980 2310 2640 2970 3300 3630 3960 4290 4620 4950 5280 5610 5940 6270 6600