

UNITED STATES  
DEPARTMENT OF THE INTERIOR  
GEOLOGICAL SURVEY

## APPLICATION FOR PERMIT TO DRILL, DEEPEN, OR PLUG BACK

## 1a. TYPE OF WORK

DRILL ☒DEEPEN ☐PLUG BACK ☐

## b. TYPE OF WELL

OIL  
WELL ☐GAS  
WELL ☐

OTHER

SINGLE  
ZONE ☐MULTIPLE  
ZONE ☐

## 2. NAME OF OPERATOR

General American Oil Company of Texas

## 3. ADDRESS OF OPERATOR

P.O. Box 416, Loco Hills, New Mexico 88255

## 4. LOCATION OF WELL (Report location clearly and in accordance with any State requirements.)\*

At surface

660' FNL and 1980' FEL Sec. 23, Twp. 17-S, Rg. 29-E

At proposed prod. zone

## 14. DISTANCE IN MILES AND DIRECTION FROM NEAREST TOWN OR POST OFFICE\*

Three (3) miles west of Loco Hills

## 15. DISTANCE FROM PROPOSED\*

LOCATION TO NEAREST

PROPERTY OR LEASE LINE, FT.

(Also to nearest drlg. unit line, if any)

660'

## 18. DISTANCE FROM PROPOSED LOCATION\*

TO NEAREST WELL, DRILLING, COMPLETED,  
OR APPLIED FOR, ON THIS LEASE, FT.

1320'

## 16. NO. OF ACRES IN LEASE

800

## 19. PROPOSED DEPTH

3400'

17. NO. OF ACRES ASSIGNED  
TO THIS WELL

40

## 20. ROTARY OR CABLE TOOLS

Rotary

## 21. ELEVATIONS (Show whether DF, RT, GR, etc.)

3600' GL

## 22. APPROX. DATE WORK WILL START\*

2-27-71

## 23.

## PROPOSED CASING AND CEMENTING PROGRAM

SIZE OF HOLE	SIZE OF CASING	WEIGHT PER FOOT	SETTING DEPTH	QUANTITY OF CEMENT
12-1/4"	8-5/8"	20#	394'	100 Sacks
7-7/8"	5-1/2"	14#	3400'	300 Sacks

We propose to drill this well to 3400' to test the Keely, San Andres and Matex Zones. If production is indicated we will frac and place on Production.

RECEIVED

MAR 1 1971

O. C. C.  
ARTESIA, OFFICERECEIVED  
FEB 26 1971  
U. S. GEOLOGICAL SURVEY  
ARTESIA, NEW MEXICO

IN ABOVE SPACE DESCRIBE PROPOSED PROGRAM: If proposal is to deepen or plug back, give data on present productive zone and proposed new productive zone. If proposal is to drill or deepen directionally, give pertinent data on subsurface locations and measured and true vertical depths. Give blowout preventer program, if any.

## 24.

SIGNED

TITLE

District Superintendent

DATE

2-25-71

(This space for Federal or State office use)

PERMIT NO.

APPROVAL DATE

FEB 26 1971

APPROVED BY

DISTRICT ENGINEER

DATE

FEB 26 1971

CONDITIONS OF APPROVAL, IF ANY:

\*See Instructions On Reverse Side

a Federal or a State agency, or both, pursuant to applicable Federal and/or State laws and regulations. Any necessary special instructions concerning the use of this form and the number of copies to be submitted, particularly with regard to local, area, or regional procedures and practices, either are shown below or will be issued by, or may be obtained from, the local Federal and/or State office.

**Item 1:** If the proposal is to redrill to the same reservoir at a different subsurface location or to a new reservoir, use this form with appropriate notations. Consult applicable State or Federal regulations concerning subsequent work proposals or reports on the well.

**Item 4:** If there are no applicable State requirements, locations on Federal or Indian land should be described in accordance with Federal requirements. Consult local State or Federal office for specific instructions.

**Item 14:** Needed only when location of well cannot readily be found by road from the land or lease description. A plat, or plats, separate or on this reverse side, showing the roads to, and the surveyed location of, the well, and any other required information, should be furnished when required by Federal or State agency offices.

**Items 15 and 18:** If well is to be, or has been directionally drilled, give distances for subsurface location of hole in any present or objective production zone.

**Item 22:** Consult applicable Federal or State regulations, or appropriate officials, concerning approval of the proposal before operations are started.

NEW MEXICO OIL CONSERVATION COMMISSION  
WELL LOCATION AND ACREAGE DEDICATION PLAT

Form C-102  
Supersedes C-128  
Effective 1-1-65

All distances must be from the outer boundaries of the Section.

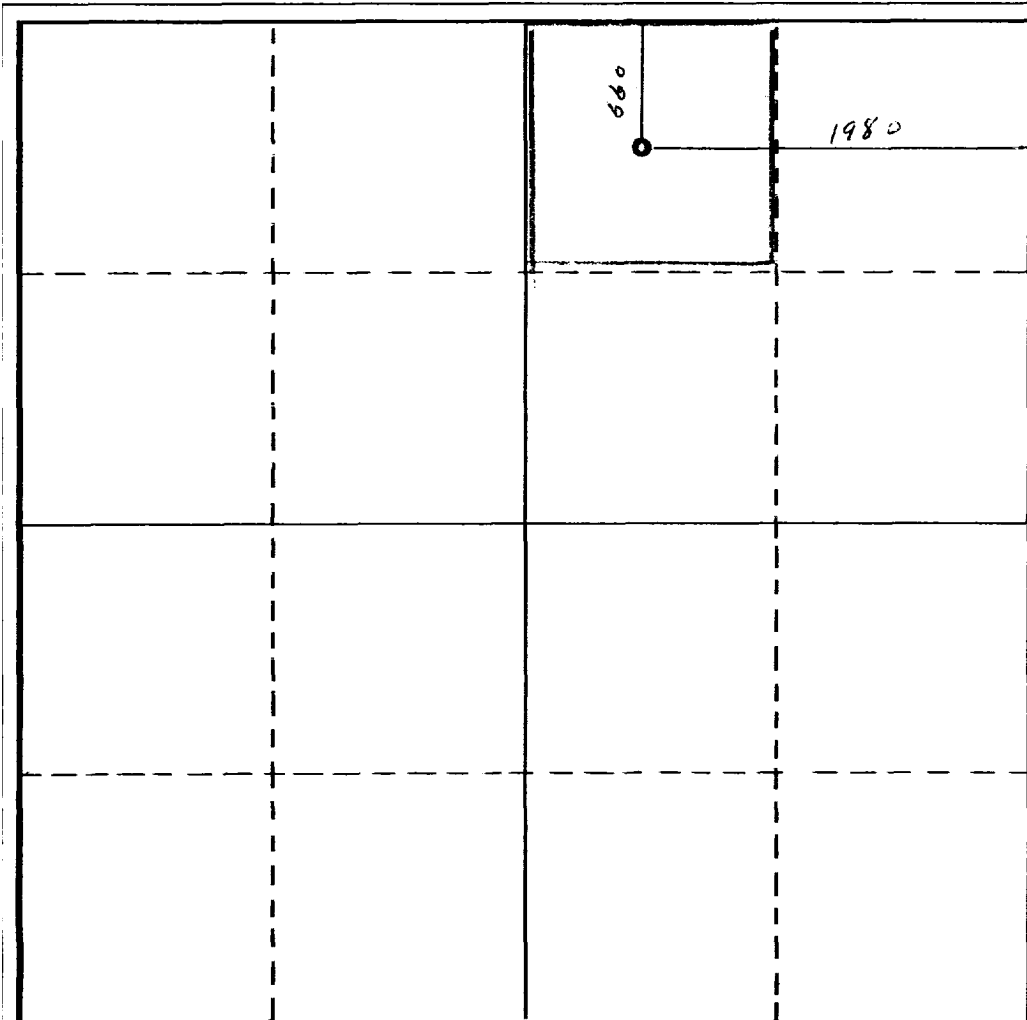
Operator <b>General American Oil Co. of Texas</b>			Lease <b>Burch</b>			Well No. <b>20</b>		
Unit Letter <b>B</b>	Section <b>23</b>	Township <b>17S</b>	Range <b>29E</b>	County <b>Eddy</b>				
Actual Footage Location of Well: <b>660</b> feet from the <b>North</b> line and <b>1980</b> feet from the <b>East</b> line								
Ground Level Elev. <b>3600</b>	Producing Formation <b>Keely, San Andres, Matez</b>			Pool <b>Grayburg-Jackson</b>			Dedicated Acreage: <b>40</b> Acres	

1. Outline the acreage dedicated to the subject well by colored pencil or hatchure marks on the plat below.
2. If more than one lease is dedicated to the well, outline each and identify the ownership thereof (both as to working interest and royalty).
3. If more than one lease of different ownership is dedicated to the well, have the interests of all owners been consolidated by communitization, unitization, force-pooling, etc?

☐ Yes ☐ No If answer is "yes," type of consolidation \_\_\_\_\_

If answer is "no," list the owners and tract descriptions which have actually been consolidated. (Use reverse side of this form if necessary.) \_\_\_\_\_

No allowable will be assigned to the well until all interests have been consolidated (by communitization, unitization, forced-pooling, or otherwise) or until a non-standard unit, eliminating such interests, has been approved by the Commission.



CERTIFICATION

I hereby certify that the information contained herein is true and complete to the best of my knowledge and belief.

Name

Position

**District Superintendent**  
Company

**General American Oil Co.**

Date

**2/21/71**

I hereby certify that the well location shown on this plat was plotted from field notes or actual surveys made by me or under my supervision and that the same is true and correct to the best of my knowledge and belief.

**RECEIVED**  
**FEB 28 1971**  
**U. S. GEOLOGICAL SURVEY**  
**ARTESIA, NEW MEXICO**

Date Surveyed

**February 19, 1971**

Registered Professional Engineer  
and/or Land Surveyor

*John A. Mathis Jr.*

Certificate No.

**1502**

