

UNITED STATES
DEPARTMENT OF THE INTERIOR
GEOLOGICAL SURVEY

APPLICATION FOR PERMIT TO DRILL, DEEPEN, OR PLUG BACK

1a. TYPE OF WORK

DRILL ☒DEEPEN ☐PLUG BACK ☐

b. TYPE OF WELL

OIL
WELL ☒GAS
WELL ☐

OTHER

SINGLE
ZONE ☒MULTIPLE
ZONE ☐

2. NAME OF OPERATOR

Skelly Oil Company ✓

3. ADDRESS OF OPERATOR

P. O. Box 1351, Midland, Texas 79701

4. LOCATION OF WELL (Report location clearly and in accordance with any State requirements.)*

At surface

1980' FNL, 660' FWL, Section 13, T-17S, R-31E

At proposed prod. zone

14. DISTANCE IN MILES AND DIRECTION FROM NEAREST TOWN OR POST OFFICE*

15. DISTANCE FROM PROPOSED*

LOCATION TO NEAREST
PROPERTY OR LEASE LINE, FT.
(Also to nearest drilg. unit line, if any)

16. NO. OF ACRES IN LEASE

5200

18. DISTANCE FROM PROPOSED LOCATION*

TO NEAREST WELL, DRILLING, COMPLETED,
OR APPLIED FOR, ON THIS LEASE, FT.

19. PROPOSED DEPTH

3810'

21. ELEVATIONS (Show whether DF, RT, GR, etc.)

Unknown

17. NO. OF ACRES ASSIGNED
TO THIS WELL

40

20. ROTARY OR CABLE TOOLS

Rotary

22. APPROX. DATE WORK WILL START*

Immediately

23.

PROPOSED CASING AND CEMENTING PROGRAM

SIZE OF HOLE	SIZE OF CASING	WEIGHT PER FOOT	SETTING DEPTH	QUANTITY OF CEMENT
11"	8-5/8"	24#	635'	350 sacks
7-7/8"	5-1/2"	17#	3810'	750 sacks

We propose to drill with rotary tools from surface to total depth of approximately 3810' and complete in the Grayburg-Jackson Pool.

The pump and plug process will be used in cementing all strings of casing. The 8-5/8" OD casing will be set at 635' and cemented to surface. The 5-1/2" OD casing will be set at approximately 3810' and cemented to surface behind pipe. The 5-1/2" OD casing will be perforated at approximately 3200' to 3800' and will be stimulated.

RECEIVED

JUL 13 1971

IN ABOVE SPACE DESCRIBE PROPOSED PROGRAM: If proposal is to deepen or plug back, give data on present productive zone and proposed productive zone. If proposal is to drill or deepen directionally, give pertinent data on surface locations and measured and true vertical depths. If no preventer program, if any.

24.

SIGNED (Signed) P. L. NUNLEY

TITLE Dist. Prod. Manager

DATE July 9, 1971

(This space for Federal or State office use)

PERMIT NO.

APPROVED BY
CONDITIONS OF APPROVAL, IF ANY:

THIS APPROVAL IS RESCINDED IF OPERATIONS
ARE NOT COMMENCED WITHIN 3 MONTHS.
EXPIRES JUL 9 1971

DATE

*See Instructions On Reverse Side

30-015-20468

5. LEASE DESIGNATION AND SERIAL NO.
LC-029420(a)

6. IF INDIAN, ALLOTTEE OR TRIBE NAME

7. UNIT AGREEMENT NAME
Skelly Unit

8. FARM OR LEASE NAME
Skelly Unit

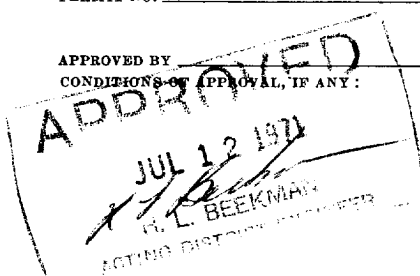
9. WELL NO.
109

10. FIELD AND POOL, OR WILDCAT
Grayburg-Jackson

11. SEC., T., R., M., OR BLK.
AND SURVEY OR AREA
Sec. 13-17S-31E

12. COUNTY OR PARISH
Eddy

13. STATE
New Mexico



Instructions

General: This form is designed for submitting proposals to perform certain well operations, as indicated, on all types of lands and leases for appropriate action by either a Federal or a State agency, or both, pursuant to applicable Federal and/or State laws and regulations. Any necessary special instructions concerning the use of this form and the number of copies to be submitted, particularly with regard to local, area, or regional procedures and practices, either are shown below or will be issued by, or may be obtained from, the local Federal and/or State office.

Item 1: If the proposal is to redrill to the same reservoir at a different subsurface location or to a new reservoir, use this form with appropriate notations. Consult applicable State or Federal regulations concerning subsequent work proposals or reports on the well.

Item 4: If there are no applicable State requirements, locations on Federal or Indian land should be described in accordance with Federal requirements. Consult local State or Federal office for specific instructions.

Item 14: Needed only when location of well cannot readily be found by road from the land or lease description. A plat, or plats, separate or on this reverse side, showing the roads to, and the surveyed location of, the well, and any other required information, should be furnished when required by Federal or State agency offices.

Items 15 and 18: If well is to be, or has been directionally drilled, give distances for subsurface location of hole in any present or objective production zone.

Item 22: Consult applicable Federal or State regulations, or appropriate officials, concerning approval of the proposal before operations are started.

NEW MEXICO OIL CONSERVATION COMMISSION
WELL LOCATION AND ACREAGE DEDICATION PLAT

Form C-102
Supersedes C-128
Effective 1-1-65

All distances must be from the outer boundaries of the Section.

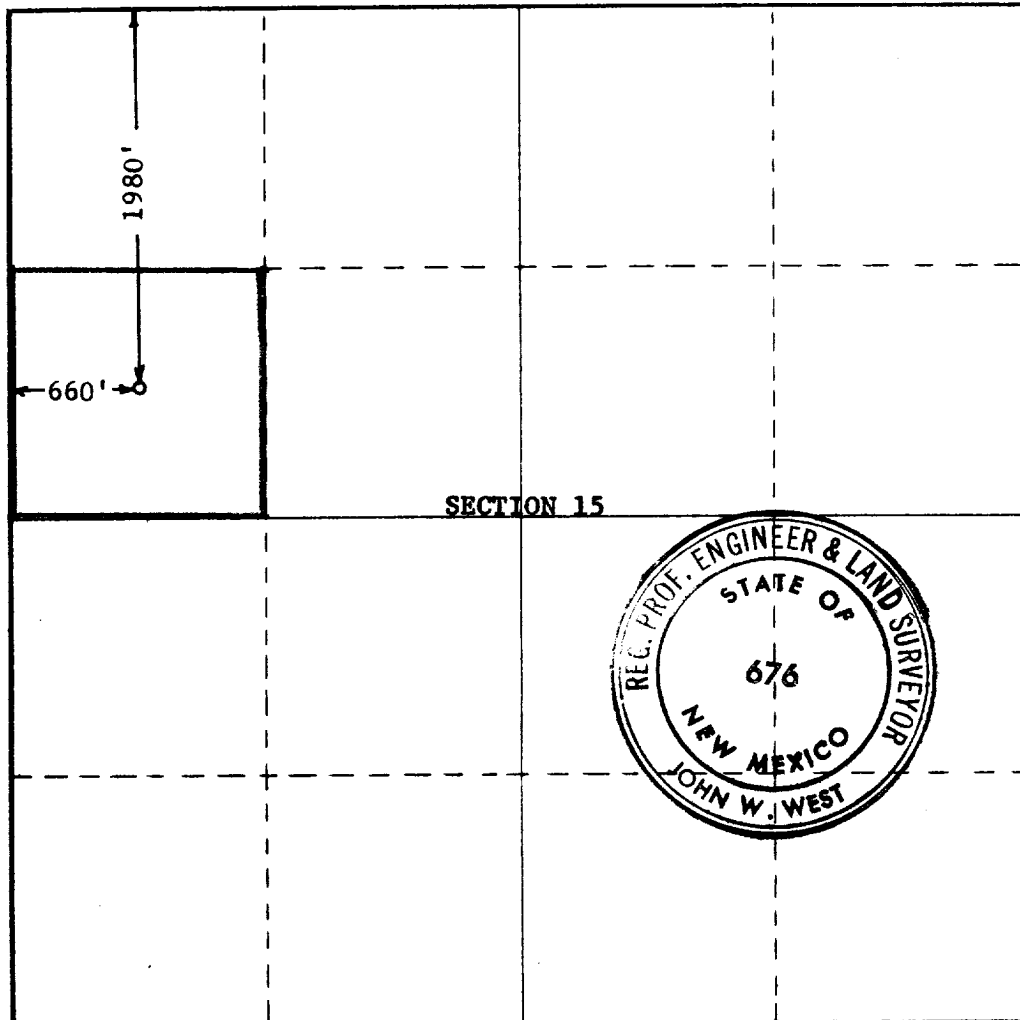
Operator SKELLY OIL CO.		Lease SKELLY UNIT		Well No. 109	
Unit Letter E	Section 15	Township 17 SOUTH	Range 31 EAST	County EDDY	
Actual Footage Location of Well: 1980 feet from the NORTH line and 660 feet from the WEST line					
Ground Level Elev. Unknown	Producing Formation Grayburg and San Andres		Pool Grayburg-Jackson	Dedicated Acreage: 40 Acres	

1. Outline the acreage dedicated to the subject well by colored pencil or hatchure marks on the plat below.
2. If more than one lease is dedicated to the well, outline each and identify the ownership thereof (both as to working interest and royalty).
3. If more than one lease of different ownership is dedicated to the well, have the interests of all owners been consolidated by communitization, unitization, force-pooling, etc?

☐ Yes ☐ No If answer is "yes," type of consolidation _____

If answer is "no," list the owners and tract descriptions which have actually been consolidated. (Use reverse side of this form if necessary.) _____

No allowable will be assigned to the well until all interests have been consolidated (by communitization, unitization, forced-pooling, or otherwise) or until a non-standard unit, eliminating such interests, has been approved by the Commission.



CERTIFICATION

I hereby certify that the information contained herein is true and complete to the best of my knowledge and belief.

Name

P. L. Nunley

Position

District Production Manager

Company

Skelly Oil Company

Date

July 9, 1971

I hereby certify the well location shown on this plat was obtained from field notes of actual surveys made by me or under my supervision and that the same is true to the best of my knowledge and belief.

Date Surveyed

JULY 8, 1971

Registered Professional Engineer and/or Land Surveyor

John W. West

Certificate No.

676

